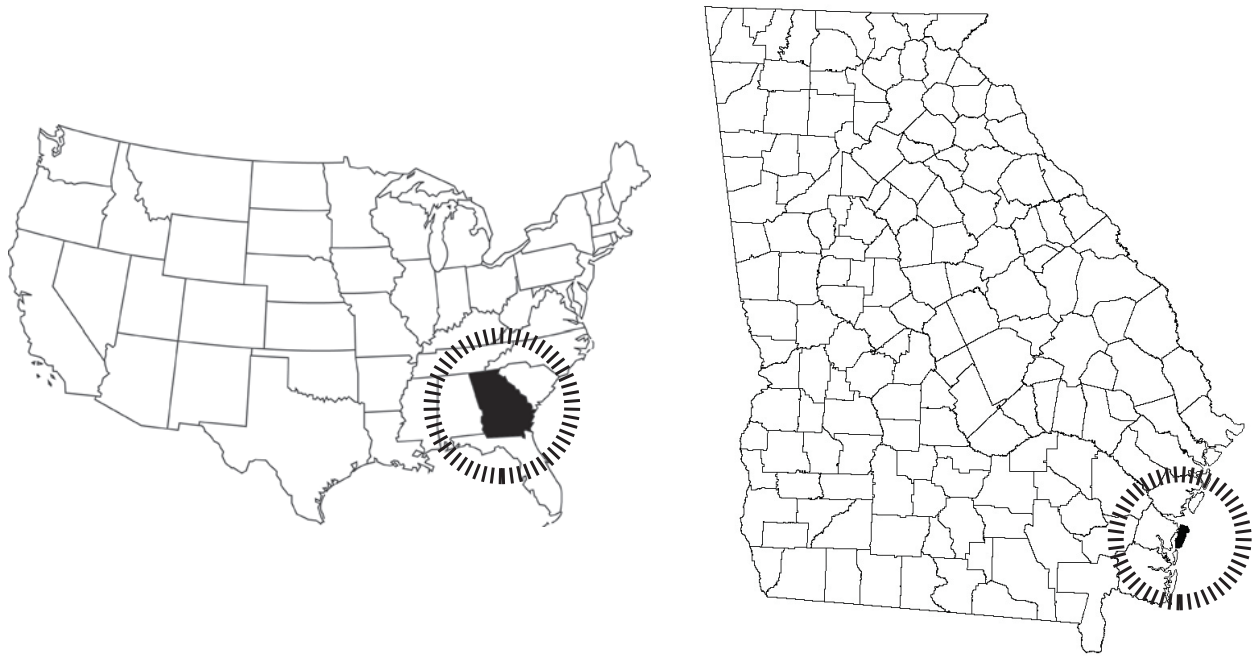




THE HARRINGTON SCHOOL

SAINT SIMONS ISLAND, GEORGIA

HALEY MATAKIS
UNIVERSITY OF GEORGIA
COLLEGE OF ENVIRONMENT AND DESIGN
SENIOR CAPSTONE STUDIO
PROFESSOR ASHLEY STEFFENS
FALL SEMESTER 2014



+ SAINT SIMONS ISLAND, GEORGIA

The second largest, and most highly developed of Georgia's barrier islands.

Geography

- 12 miles long
- 3 miles wide at widest point
- Located in Glynn County
- East of the city of Brunswick
- South of Little Saint Simons Island
- North of Jekyll Island

Cultural History

- Guale Indian Tribe
 - + Fishing and hunting grounds
- Spanish Missions
 - +Assimilation to the Spanish Colonial System
- Fort Frederica
 - +Protection from Spanish invasion
 - +First colonial town
- Plantation Era
 - +Agriculture becomes primary means of living
 - +Two largest plantations:
 - Cannon's Point
 - Saint Clair

+ GULLAH GEECHEE CULTURE

Enslaved men and women from West and Central Africa

Knowledge and experience in the cultivation of rice crops

Linguistic, artistic, and societal style

Creole culture largely intact due to the area's regional isolation

Gullah- Carolinas

Geechee- Georgia and Florida



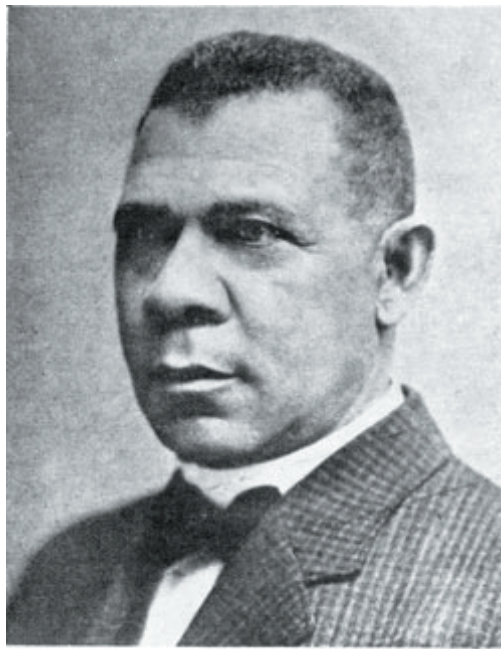
The Gullah Geechee Heritage Corridor stretches from Wilmington, North Carolina along the coast down to Jacksonville, Florida.

+ THE ROSENWALD SCHOOL BUILDING PROGRAM

1912 - The initiative provided seed grants for the construction of 5,300 school buildings in 15 states.

Built by and for the African American citizens who would use them

Recognized as one of the most important partnerships to advance African American education in the 20th century



+ BOOKER T. WASHINGTON



+ JULIUS ROSENWALD

+ HARRINGTON GRADED SCHOOL

1920 - Built based on the Rosenwald Program's One Teacher Community school plan.

The primary educational venue for the three African American communities on Saint Simons:

Southend, Harrington, and Jew Town

Hosted grades 1-7 through the 1960's and desegregation.

Glynn County, in cooperation with the Saint Simons Land Trust, have set out to restore and develop The Harrington Schoolhouse building and surrounding lands into a historic museum and park commemorating the cultural importance of this island landmark.

+ CLIENT RECOMMENDATIONS

- + Ample visitor and staff parking
- + ADA accessible paths and trails throughout the site
- + On-site bathroom facilities

+ DESIGN INTENT AND GOALS

+ CONSERVATION AND RESTORATION

- Identify and utilize sustainable design opportunities such as:
 - + Rainwater harvesting and water conservation systems
 - + Low impact trail and boardwalk systems
 - + Energy efficient lighting
- Restoration of existing schoolhouse
 - + Utilize traditional building methods and materials
- Wetland Restoration
 - + Initiate wetland cleanup process
- Ecosystem Conservation
 - + Provide for the safety and continued existence of wildlife and plant species
 - + Create buffers to protect and highlight natural systems

+ HIGHLIGHT HISTORICAL SIGNIFICANCE

- Gullah Geechee Corridor connection
- Historic Rosenwald School Plan

+ PROVISION OF EDUCATIONAL OPPORTUNITIES

- African American History
- Educational gardens
 - + Historical Food Crops
 - + Plantation Style Fruit Tree Orchard

+ ADDRESS PLACE MAKING

- Implement informative and cohesive signage
- Clear site circulation and context connections

+ USE AND CONTEXT

The Harrington Schoolhouse and Property - ~1 Acre

Structure in disrepair

Owned by the Saint Simons Land Trust

Surrounding Property - 11 Acres

Primarily wetland conditions, with lush coastal plant life

Owned by Glynn County

All 12 Acres surrounded by residential property



+ SOILS

CaB - Cainhoy Fine Sand

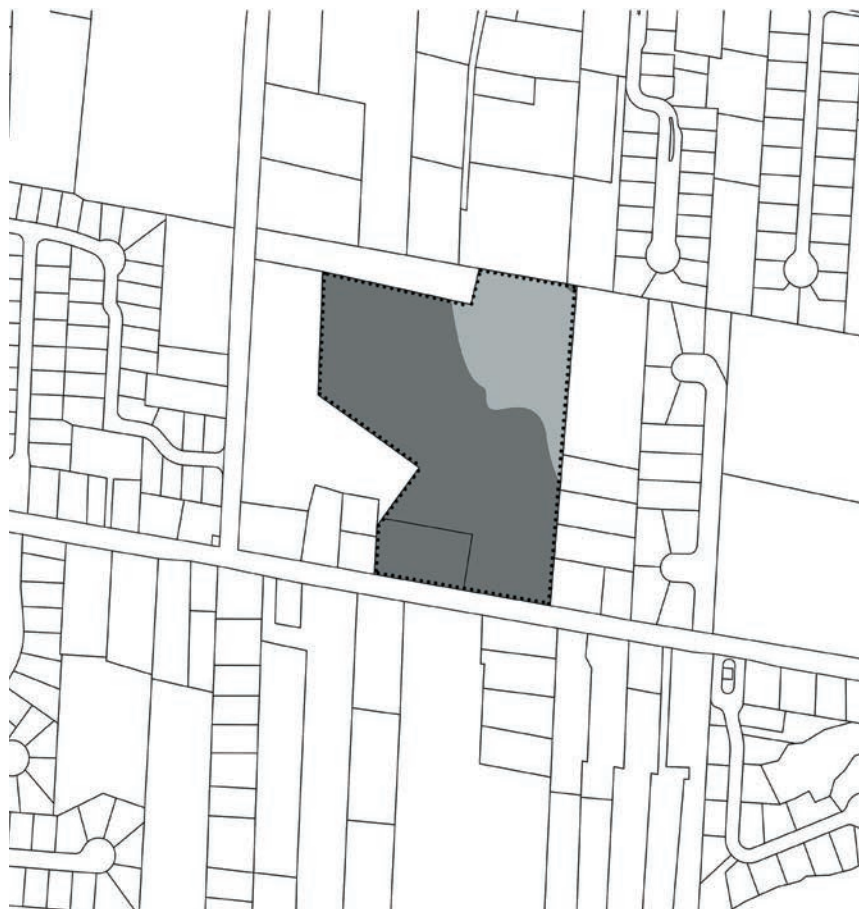
Map Unit Setting
 Elevation: 10-120feet
 Mean Annual Precipitation: 44 - 52 Inches
 Mean Annual Air Temp 62 - 70 degrees
 Frost Free Period: 230 - 290 days

Properties and Qualities
 Slope : 0 - 5%
 Depth to restrictive feature : 80+ inches
 Drainage Class: Excessively Drained
 Capacity of the most limiting layer to transmit water (Ksat): High to Very High (5.95 - 19.98 in/hr)
 Depth to Water Table: 80+ inches
 Frequency of Flooding : None
 Frequency of Ponding:None
 Available Water Capacity: Low (about 4.2 inches)

Ma - Madarin Fine Sand

Map Unit Setting
 Elevation: 0 - 250 ft
 Mean Annual Precipitation: 39 - 62 inches
 Mean Annual Air Temp 53 - 81 degrees
 Frost Free Period: 209 - 365 days

Properties and Qualities
 Slope : 0 - 2%
 Depth to restrictive feature : 80+ inches
 Drainage Class: Somewhat Poorly Drained
 Capacity of the most limiting layer to transmit water (Ksat): Moderately High to Very High (1.28 - 19.98 in/hr)
 Depth to Water Table: 18 - 30 inches
 Maximum Salinity: Nonsaline (0.0 - 2.0 mmhos/cm)
 Available Water Capacity: Low (about 4.2 inches)



+ HURRICANE FLOOD PLAIN

Category 1

Winds 74-95 mph (64-82 kt or 119-153 km/hr).
Storm surge generally 4-5 ft above normal.

Category 2

Winds 96-110 mph (83-95 kt or 154-177 km/hr).
Storm surge generally 6-8 feet above normal.

Category 3

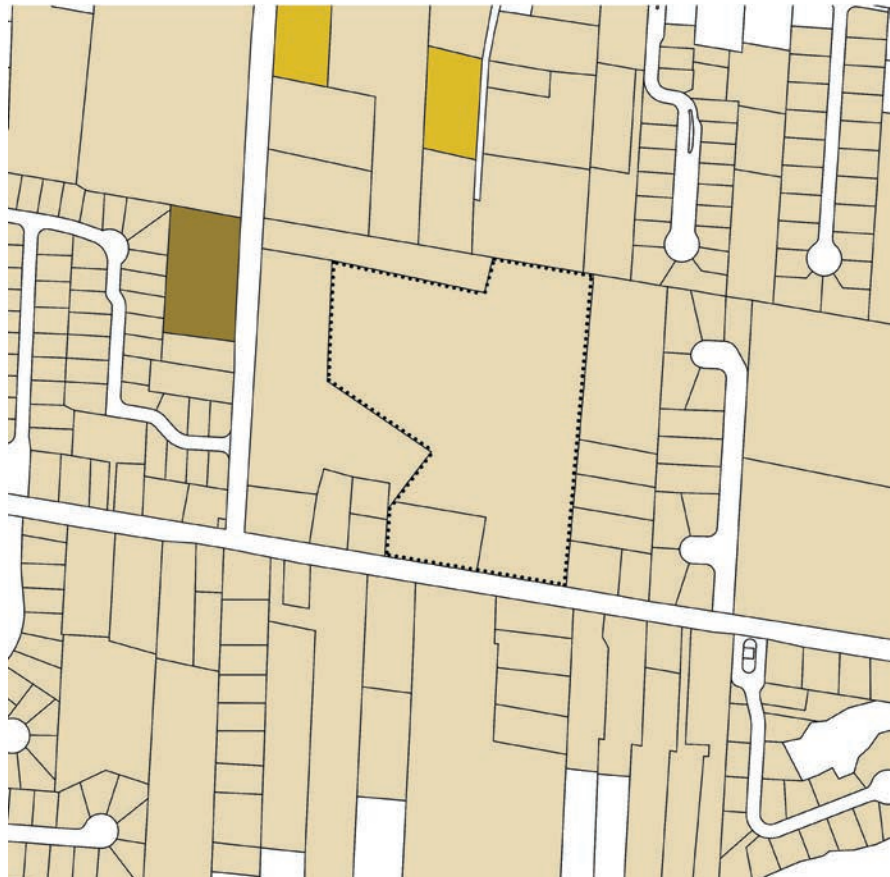
Winds 111-130 mph (96-113 kt or 178-209 km/hr).
Storm surge generally 9-12 ft above normal.



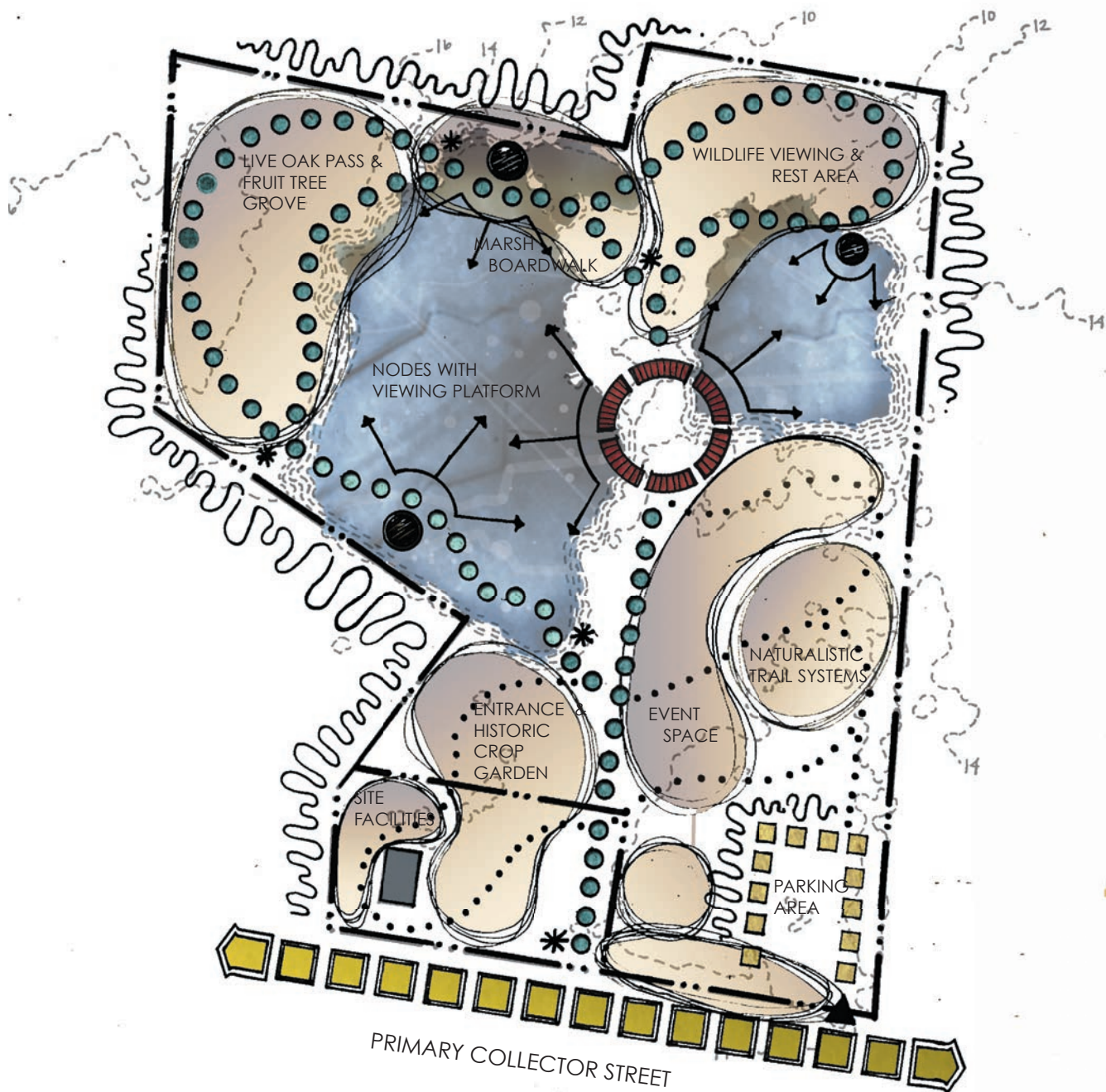
+ ZONING

The site is zoned R3, residential.

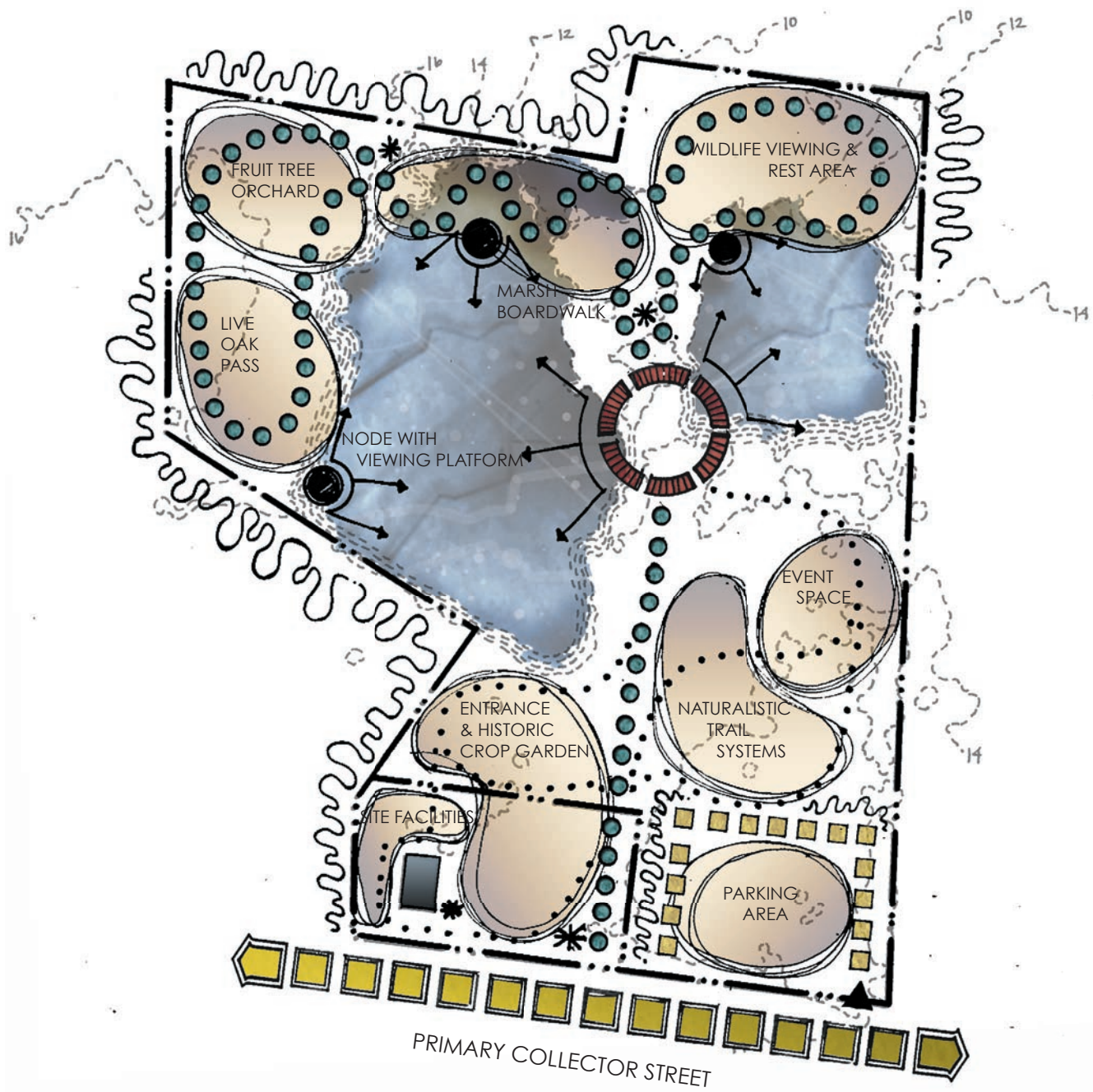
The surrounding area lies largely within the R3, residential zone.



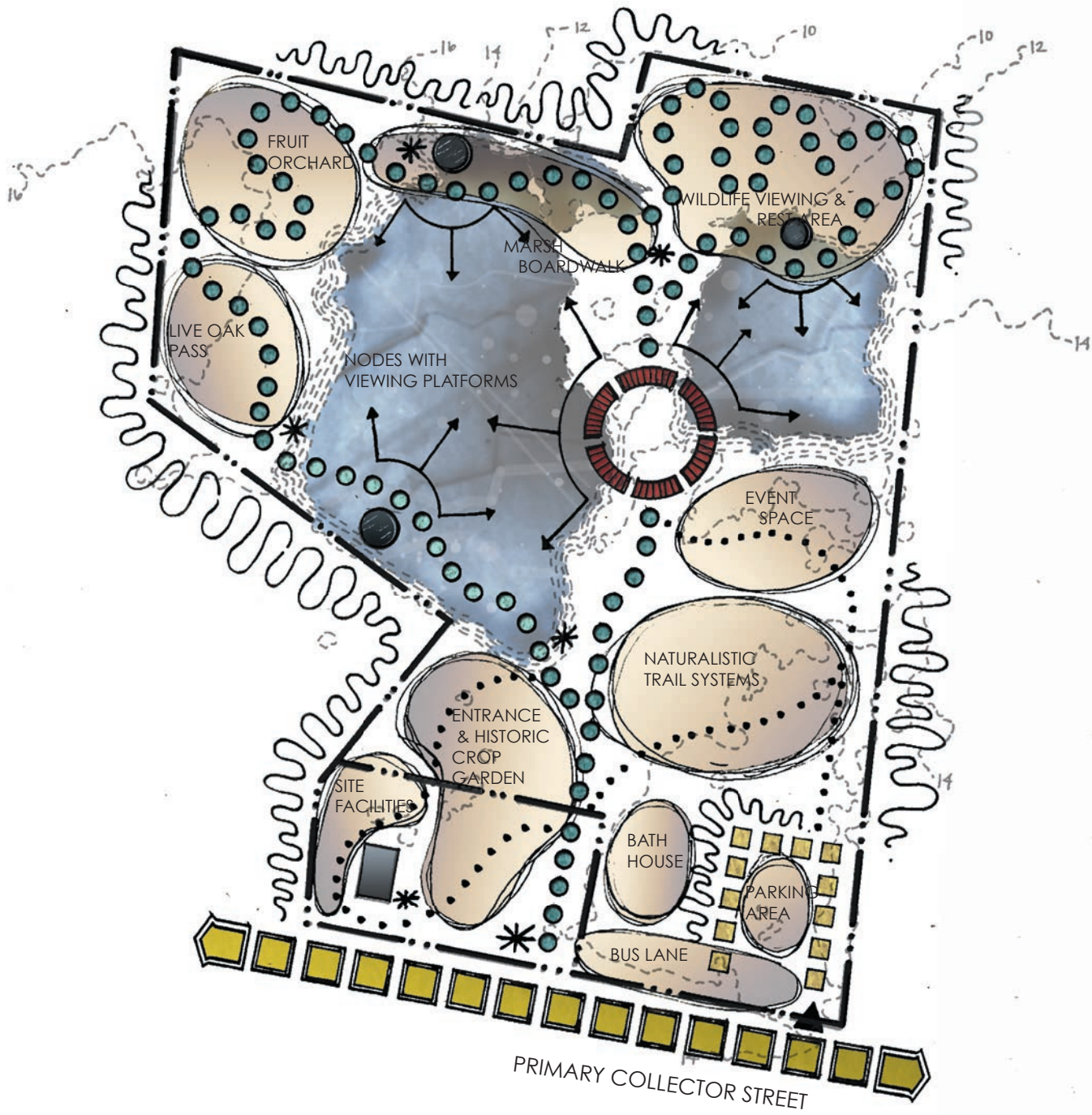
DESIGN DEVELOPMENT // Concept One



DESIGN DEVELOPMENT // Concept Two



DESIGN DEVELOPMENT // Concept Three

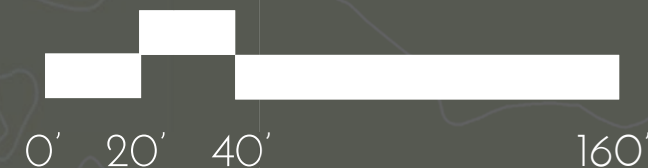




THE HARRINGTON SCHOOL // Master Plan



SCALE // 1" = 40' - 0"

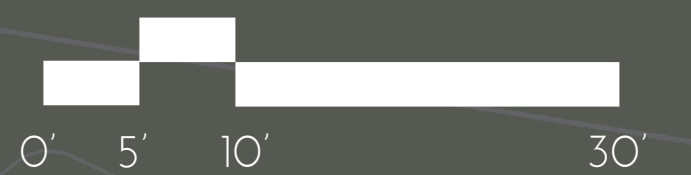




THE HARRINGTON SCHOOL // Site Plan One

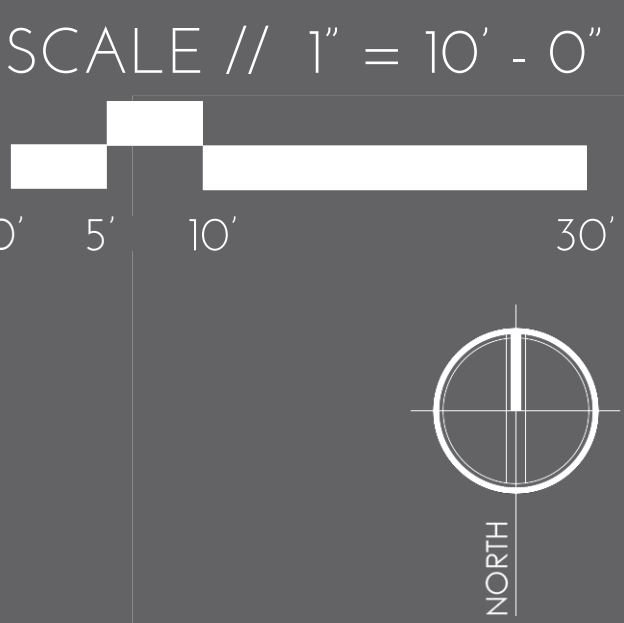


SCALE // 1" = 10' - 0"

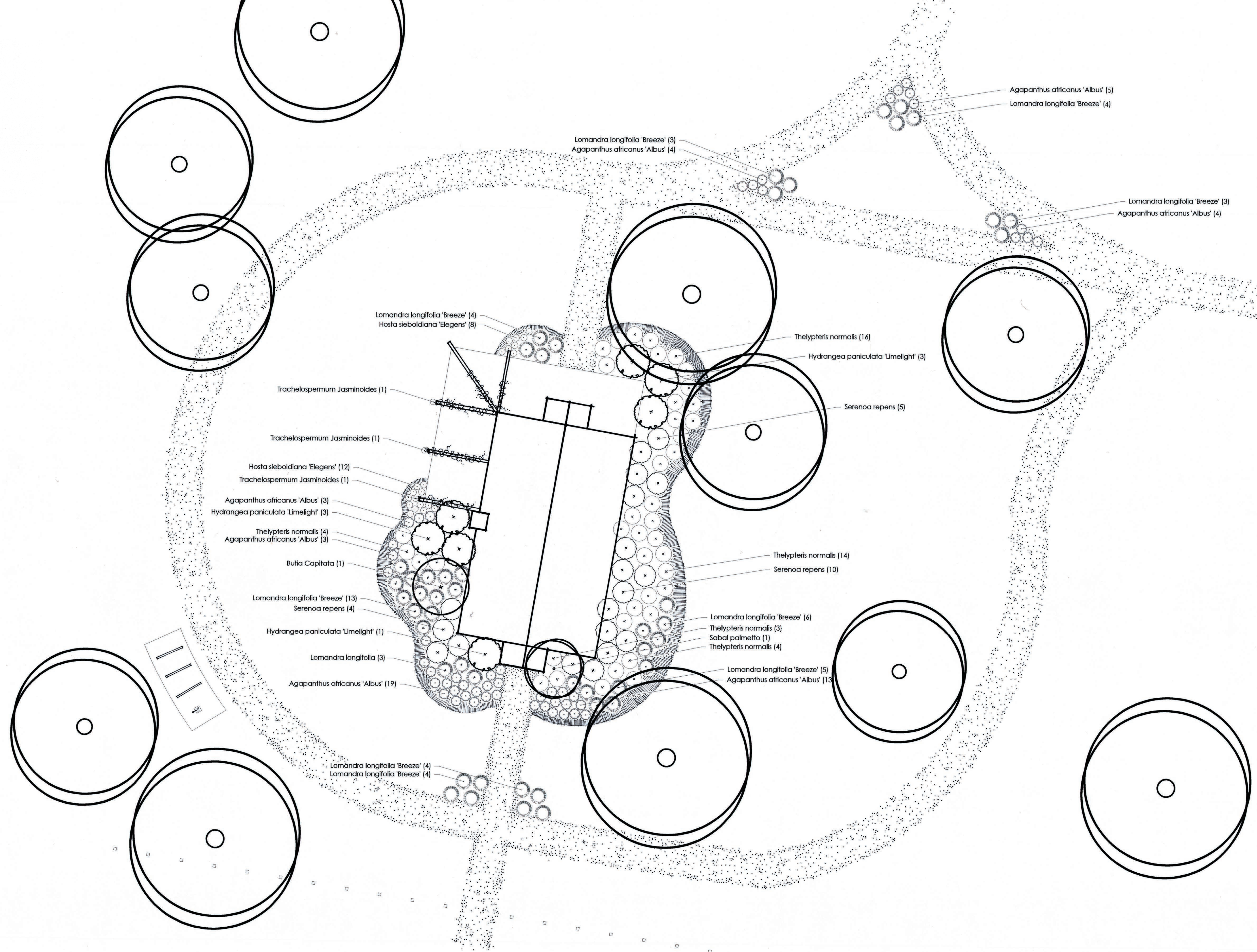




THE HARRINGTON SCHOOL // Schoolhouse Perspective



SITE PLAN ONE // Planting Plan





+ Agapanthus
Perennial
Showy white blooms



+ Hosta
Perennial
Attracts hummingbirds



+ Pindo Palm
Evergreen
Stout structural trunk
Silvery-green arching fronds
Long yellow blooms
Edible fruit



+ Green Palmetto
Evergreen



+ Confederate Jasmine
Evergreen
Fragrant, white blooms



+ Lomandra Grass
Evergreen
Deer resistant

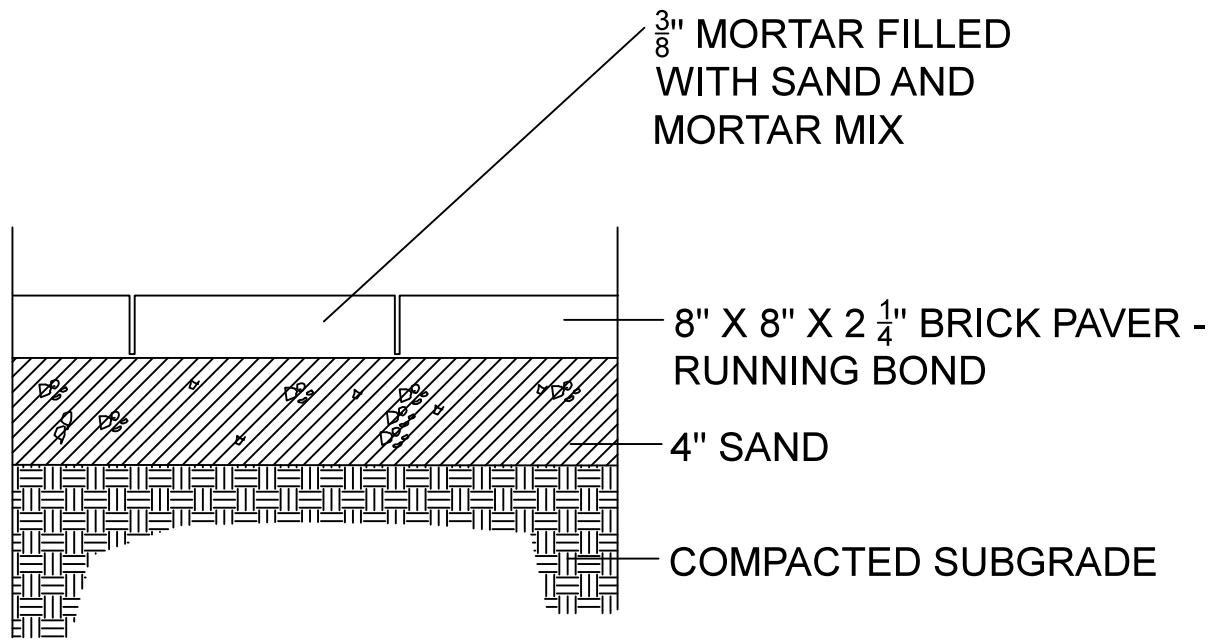


+Southern Wood Fern
Native
Semi-evergreen

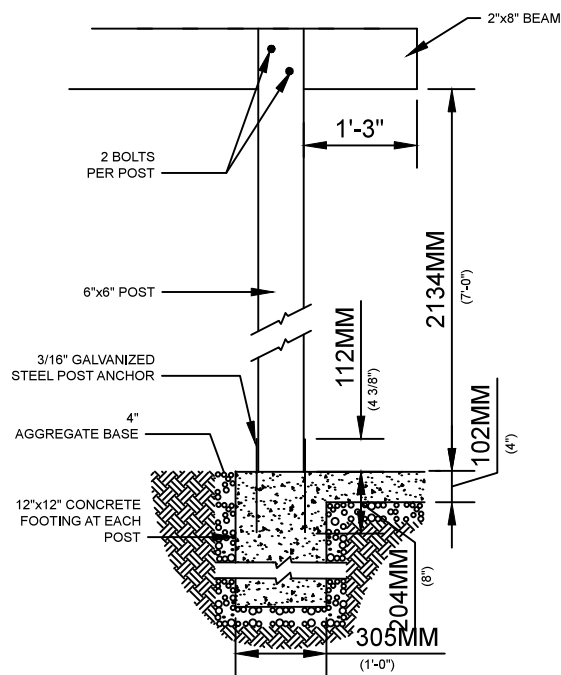


+Limelight Hydrangea
Showy light green/white
blooms

Schoolhouse Planting Schedule					
Botanical Name	Common Name	Count	Size	Container Size	Price
Agapanthus africanus 'Albus'	Agapanthus	50	H: 1-3' S: 1-3'	2 Gal	\$8.00
Butia capitata	Pindo Palm	1	H: 10-20 S: 10-15	B&B 2'CT	\$375
Hosta sieboldiana 'Elegans'	Hosta	20	H: 1-2' S: 1-3'	2 Gal	\$5.75
Hydrangea paniculata 'Limelight'	Limelight Hydrangea	7	H: 6-8' S: 6-8'	3 Gal	\$16.00
Lomandra longifolia 'Breeze'	Lomandra Breeze Grass	49	H: 2-3' S: 2-4'	3 Gal	\$7.50
Serenoa repens	Green Palmetto	19	H: 3-6' S: 4'	3 Gal	\$15.00
Thelypteris normalis	Southern Wood Fern	41	H: 3' S: 3'	1 Gal	\$4.25
Trachelospermum jasminoides	Confederate Jasmine	3	H: 18-20'	3 Gal	\$6.50
					Total cost: \$1848.25



BRICK PAVER DETAIL
SCALE: 1/2" = 1' - 0"



ARBOR POST DETAIL
SCALE: 1' = 1' - 0"



SITE PLAN ONE // Grading Plan



SCALE // 1" = 10' - 0"





THE HARRINGTON SCHOOL // Site Plan Two



SCALE // 1" = 8' - 0"





THE HARRINGTON SCHOOL // Pavilion Perspective



THE HARRINGTON SCHOOL // Pavilion Section
SCALE // 1" = 10' - 0"



+ Saltmeadow Cordgrass
Native
Supports estuary species
Provides wildlife food



+ Sand Cordgrass
Native
Slope stabilizer



+Oleander
Evergreen
Showy, fragrant white blooms
Salt tolerant



+Green Palmetto
Evergreen



+Cast Iron Plant
Evergreen
Shade Tolerant



+Variegated Hydrangea
White blooms
Shade tolerant



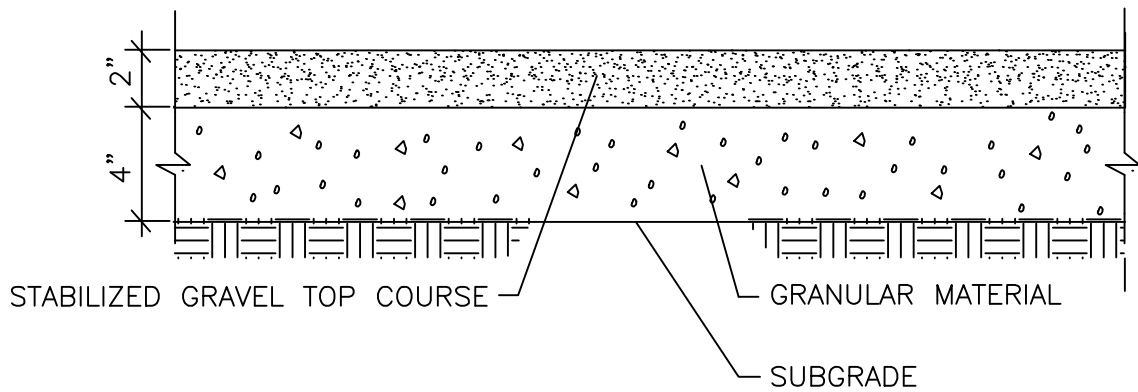
+ Swamp Hibiscus
Showy Red Blooms
Attracts bee and butterflies



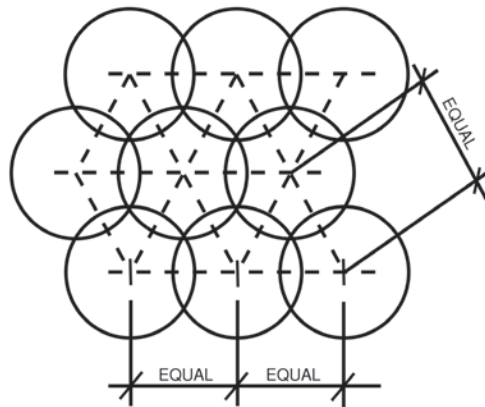
+Southern Wood Fern
Native
Semi-evergreen

Event Pavilion Planting Schedule

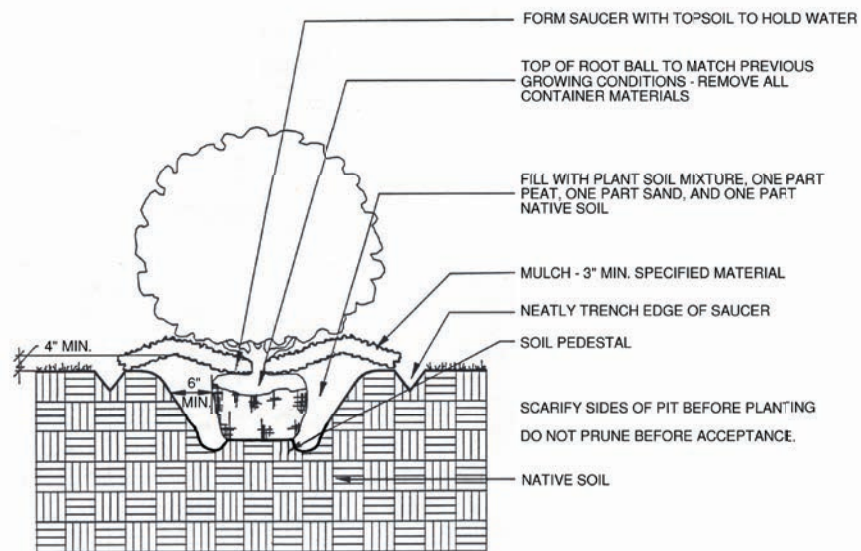
Botanical Name	Common Name	Count	Size	Container Size	Price
Aspidistra elatior	Cast Iron Plant	25	H: 2' S: 2-3'	1 Gal	\$3.50
Hibiscus coccineus	Swamp Hibiscus	51	H: 6-8' S: 4'	3 Gal	\$8.75
Hydrangea macrophylla variegata	Variegated Hydrangea	6	H: 6' S: 6'	3 Gal	\$5.00
Nerium oleander 'White Standard'	Oleander	3	H: 10-15' S: 6-10'	7 Gal	\$22.50
Serenoa repens	Green Palmetto	8	H: 3-6' S: 4'	3 Gal	\$15.00
Spartina bakeri	Sand Cordgrass	5	H: 4-6' S: 3-5'	3 Gal	\$3.00
Spartina patens	Saltmeadow Cordgrass	120	H: 2' S: 2'	1 Gal	\$3.00
Thelypteris normalis	Southern Wood Fern	55	H: 3' S: 3'	1 Gal	\$4.25
					Total cost: \$1549.00



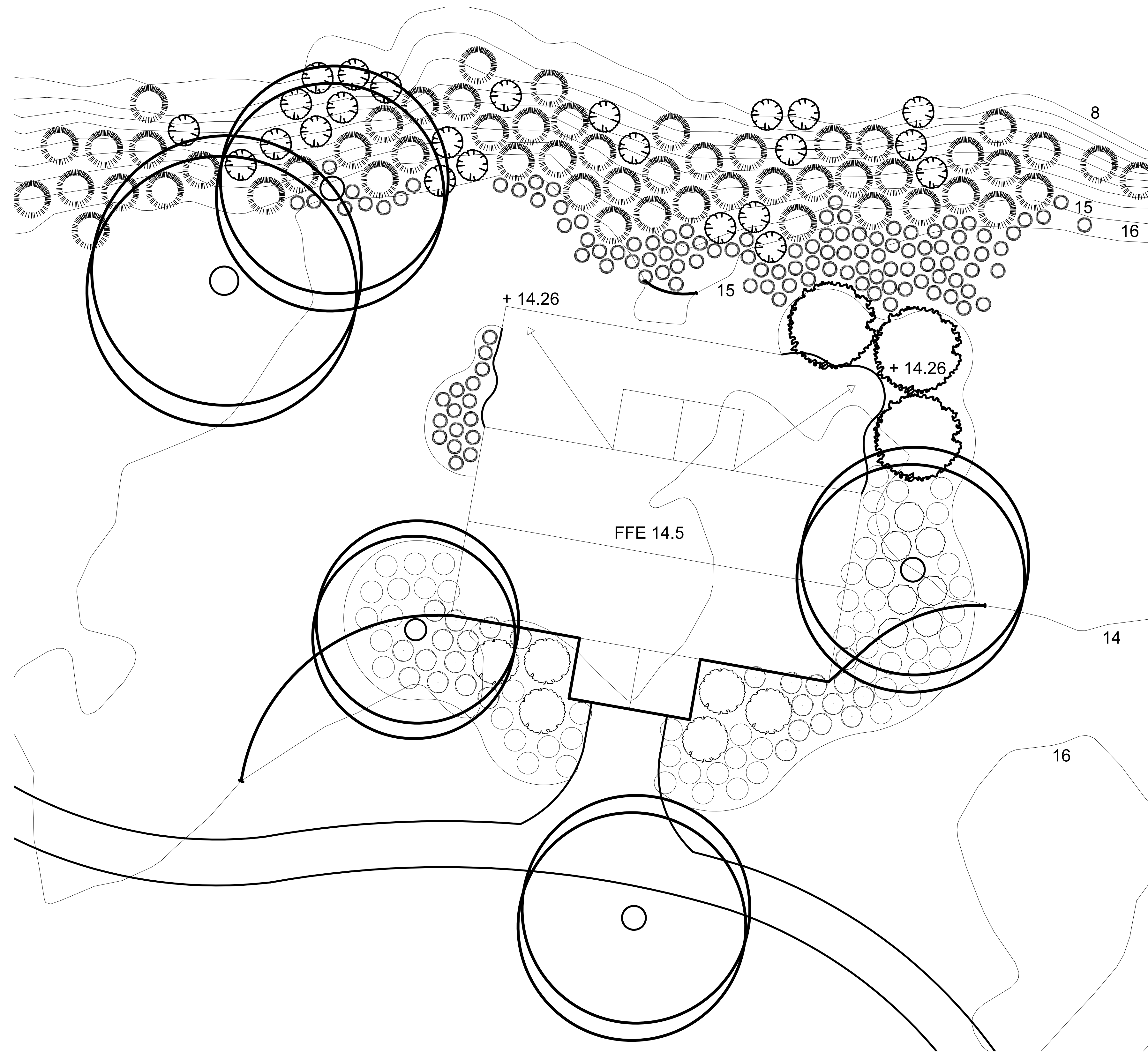
STABILIZED GRAVEL TRAIL DETAIL
SCALE: 1/2" = 1' - 0"



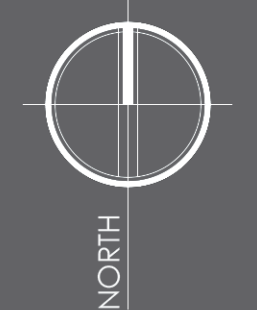
TYPICAL GROUND COVER SPACING



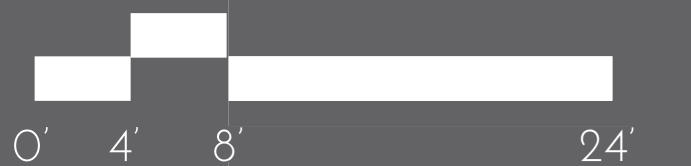
TYPICAL SHRUB PLANTING
N.T.S.



SITE PLAN TWO // Grading Plan



SCALE // 1" = 8' - 0"



THE HARRINGTON SCHOOL // Boardwalk Perspective





THE HARRINGTON SCHOOL // Thank You



SCALE // 1" = 40' - 0"

0' 20' 40' 160'