

harrington school house :: st simons island, ga

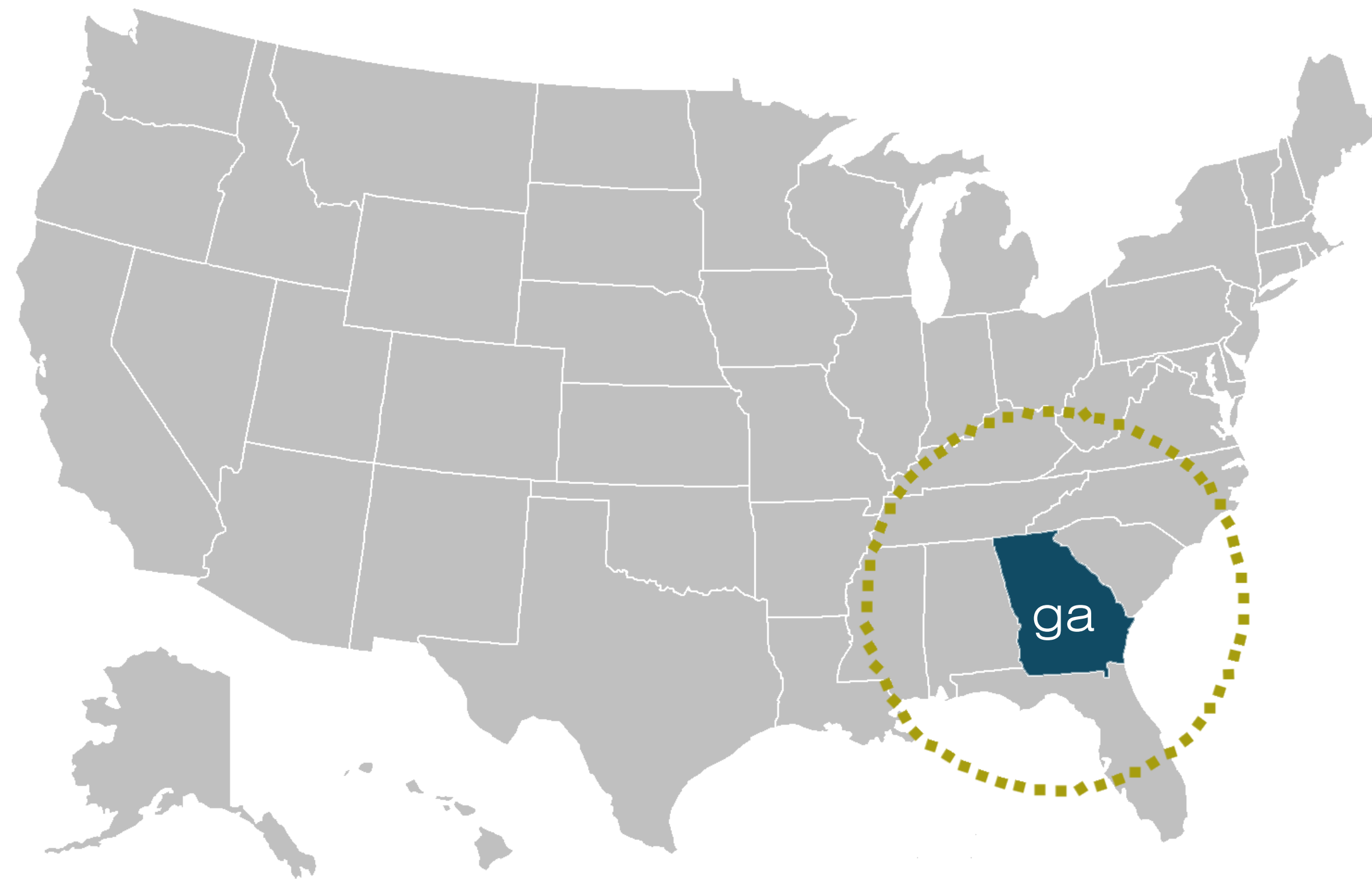
:: tori stevens

:: professor
Steffens

:: land 4900

:: spring 2014

history :: saint simons island :: georgia



:: located off the Southeast coast of Georgia
:: founded by James Ogelthorpe to fortify against Spanish invasion



:: English colonists cultivated the island for rice and cotton on large plantations worked mostly by African slaves
:: culture started by the African slaves known as the Gullah culture

:: tori stevens

:: professor Steffens

:: land 4900

:: spring 2014



history :: the gullah geechee corridor



:: The Gullah Geechee people: Rich culture of food, music, arts, creole language.

:: The Gullah Geechee Corridor: Florida to North Carolina

The corridor was created to:

:: recognize contributions made to America by Gullah Geechee.

:: assist state and local governments to preserve their culture

:: tori stevens

:: professor Steffens

:: land 4900

:: spring 2014



analysis :: existing conditions :: harrington school house



:: Rosenwald school, which was built in the 1920's

:: Housed grades 1-7

:: In 1968 the school house was converted into a daycare, which it remained until 1970.

Proposed Use ::

:: convert the schoolhouse into a museum, teaching visitors about the history of the island.

:: convert the remaining site into a park with amenities open for use to the public.

existing site photos ::



:: tori stevens

:: professor Steffens

:: land 4900

:: spring 2014

case study :: repurposed rosenwald school



:: Columbia Rosenwald School, Brazoria County, TX

:: The Rosenwald School Building Program was established by Booker T. Washington and Julius Rosenwald in 1912.



Booker T. Washington



Julius Rosenwald

:: The Columbia Rosenwald School was successfully restored and used by its community members as an interactive children's museum.



:: tori stevens

:: professor
Steffens

:: land 4900

:: spring 2014

analysis :: existing conditions :: site inventory + analysis

address ::

:: 325 south harrington road
 :: 11.01 acres

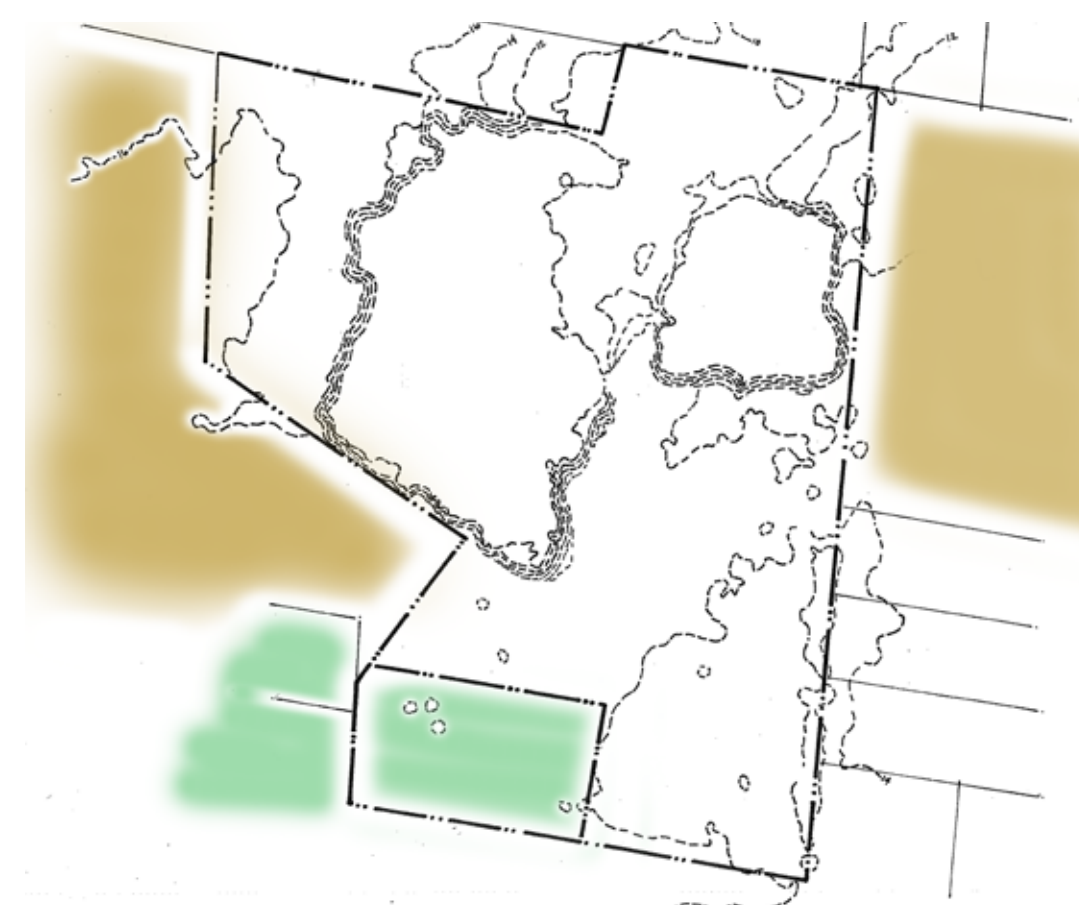
:: 291 south harrington road
 :: 1.00 acres

analysis maps ::

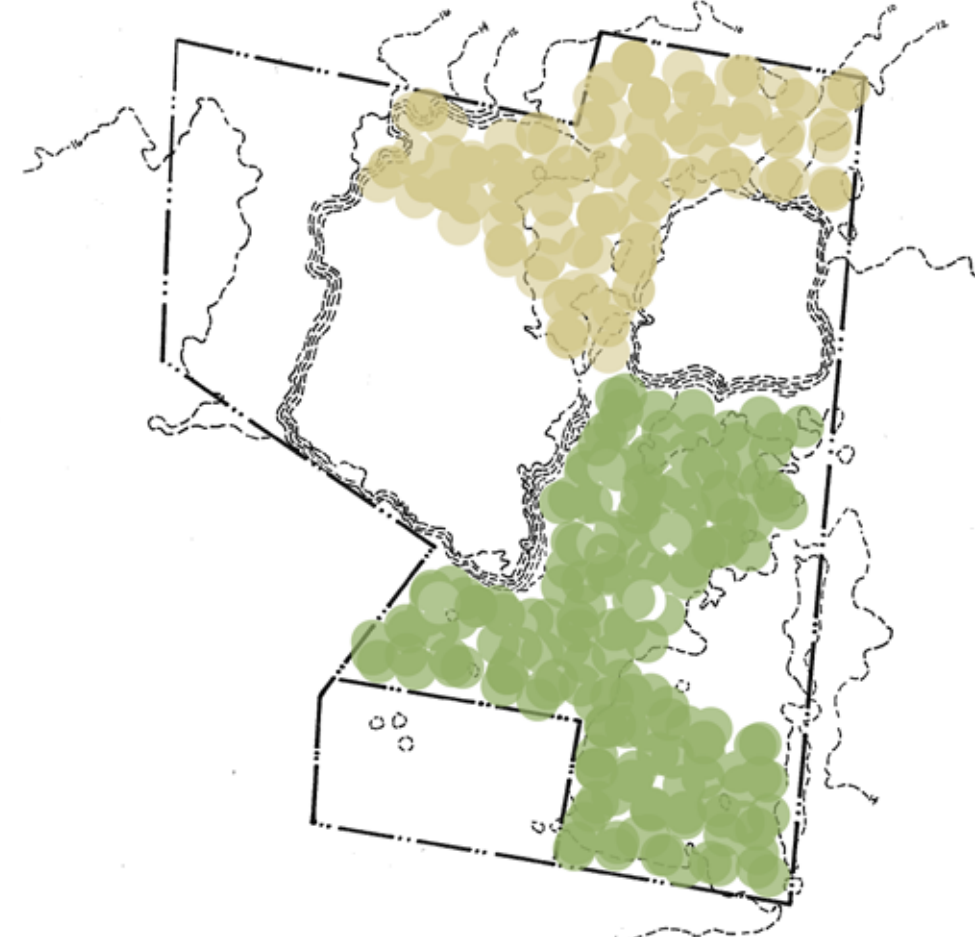
drainage map::



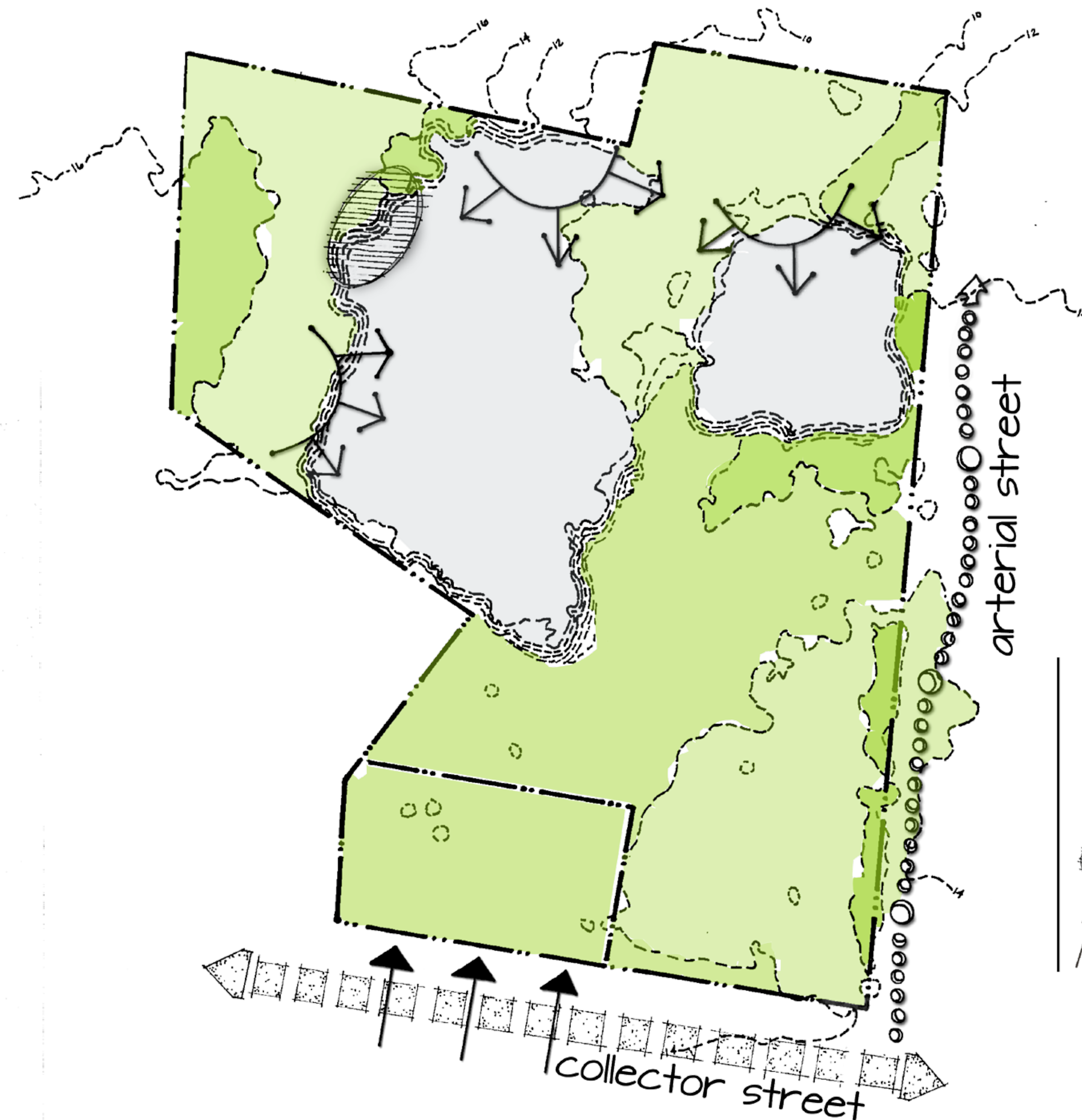
land development map::



vegetation type map::



composite map::



legend

- desired view
- existing trash
- main access

:: tori stevens

:: professor Steffens

:: land 4900

:: spring 2014



project developement :: program

design intent :: reuse and renovate

:: Sustainable design strategies are implemented to create a community park and museum to educate visitors about the history of St. Simons Island and more specifically The Harrington Schoolhouse and the Gullah Geechee Corridor.

Program ::

:: harrington schoolhouse museum
schoolhouse renovated into a museum to exhibit lessons of history about St. Simons, the Gullah Geechee Corridor, and the Harrington School house

:: boardwalk trail system
a boardwalk nature trail made from reclaimed wood winds through the site with over looks and educational oppurtunities to learn about native wildlife and vegetation

:: museum cafe
a small outdoor cafe attached to the museum for visitors to eat and/or relax while visiting the site

:: community garden
herb and vegetable garden for personal use and donations to cafe

:: bathroom facilities

:: onsite parking
a small permeable parking lot for vehicles and bike racks located in front of the school house

:: event space
space that can be used for any event, but particularly the Sea Island Festival

:: rainwater harvesting
a rain barrel is attached to the schoolhouse to catch rain water to be reused to water the plants in the garden

:: signage
signage used to direct visitors through the site and for educational pieces noting information about stormwater, native plants and animals, etc.

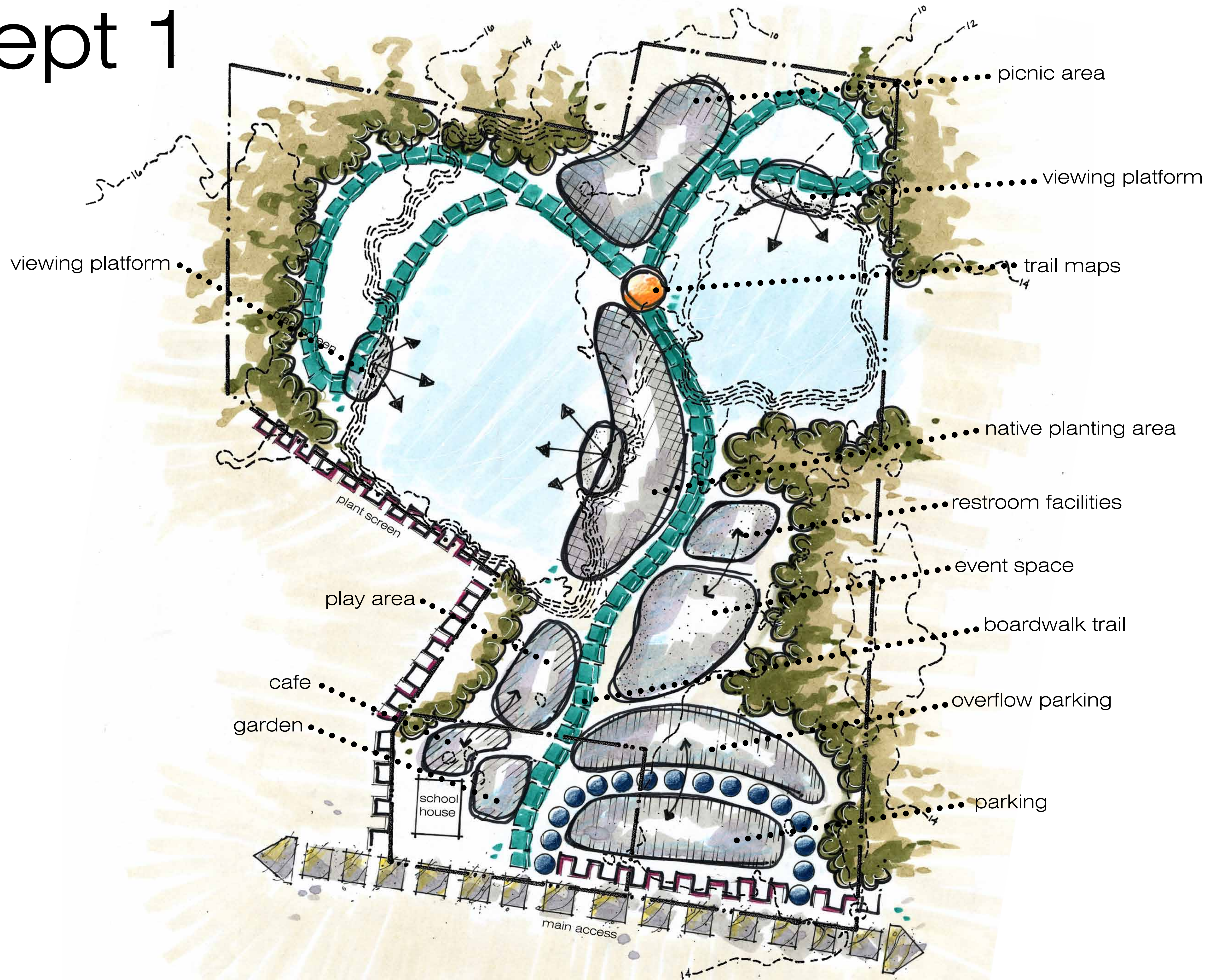
:: tori stevens

:: professor
Steffens

:: land 4900

:: spring 2014

concept 1



:: tori stevens

:: professor
Steffens

:: land 4900

:: spring 2014

concept 2



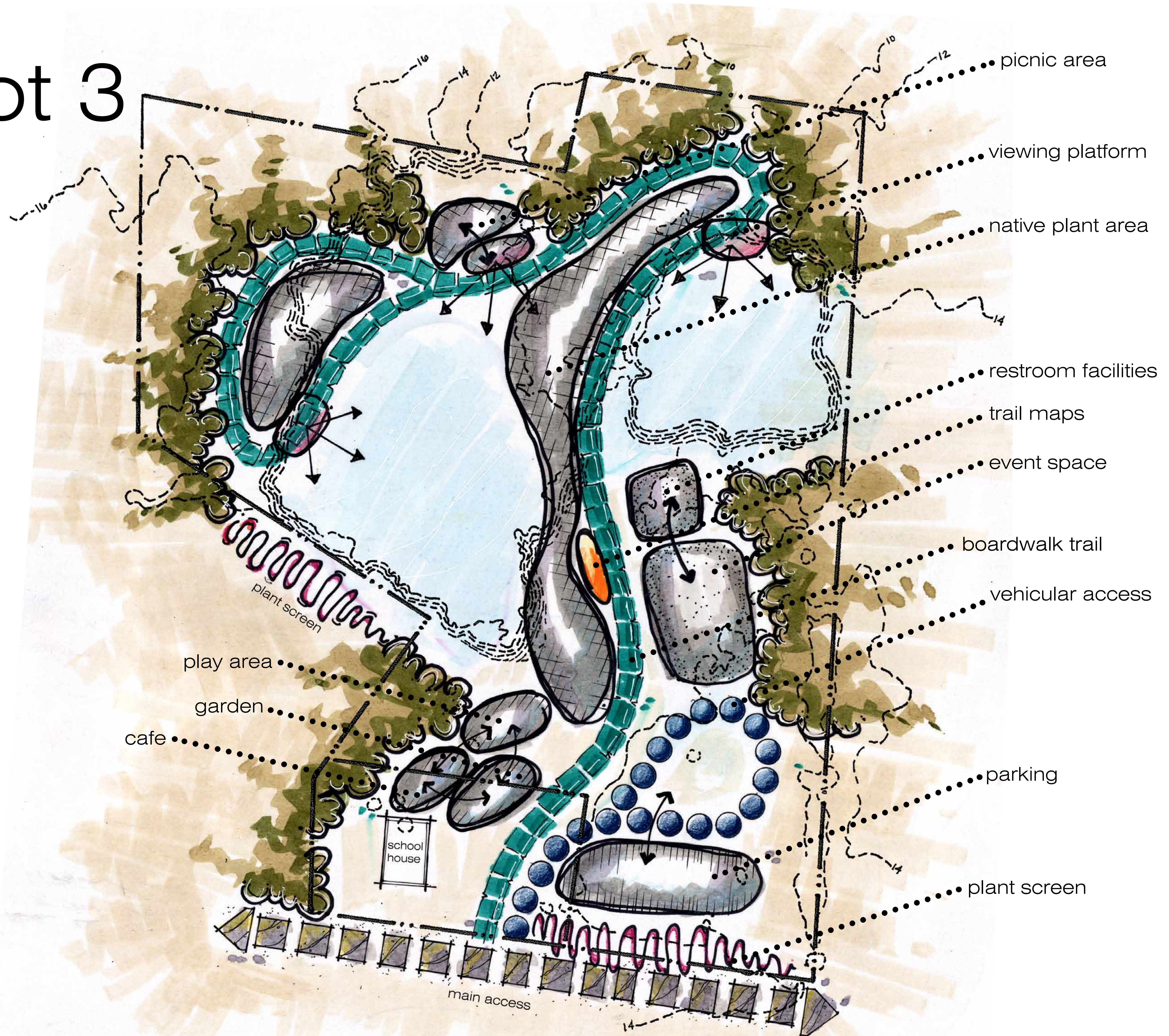
:: tori stevens

:: professor
Steffens

:: land 4900

:: spring 2014

concept 3



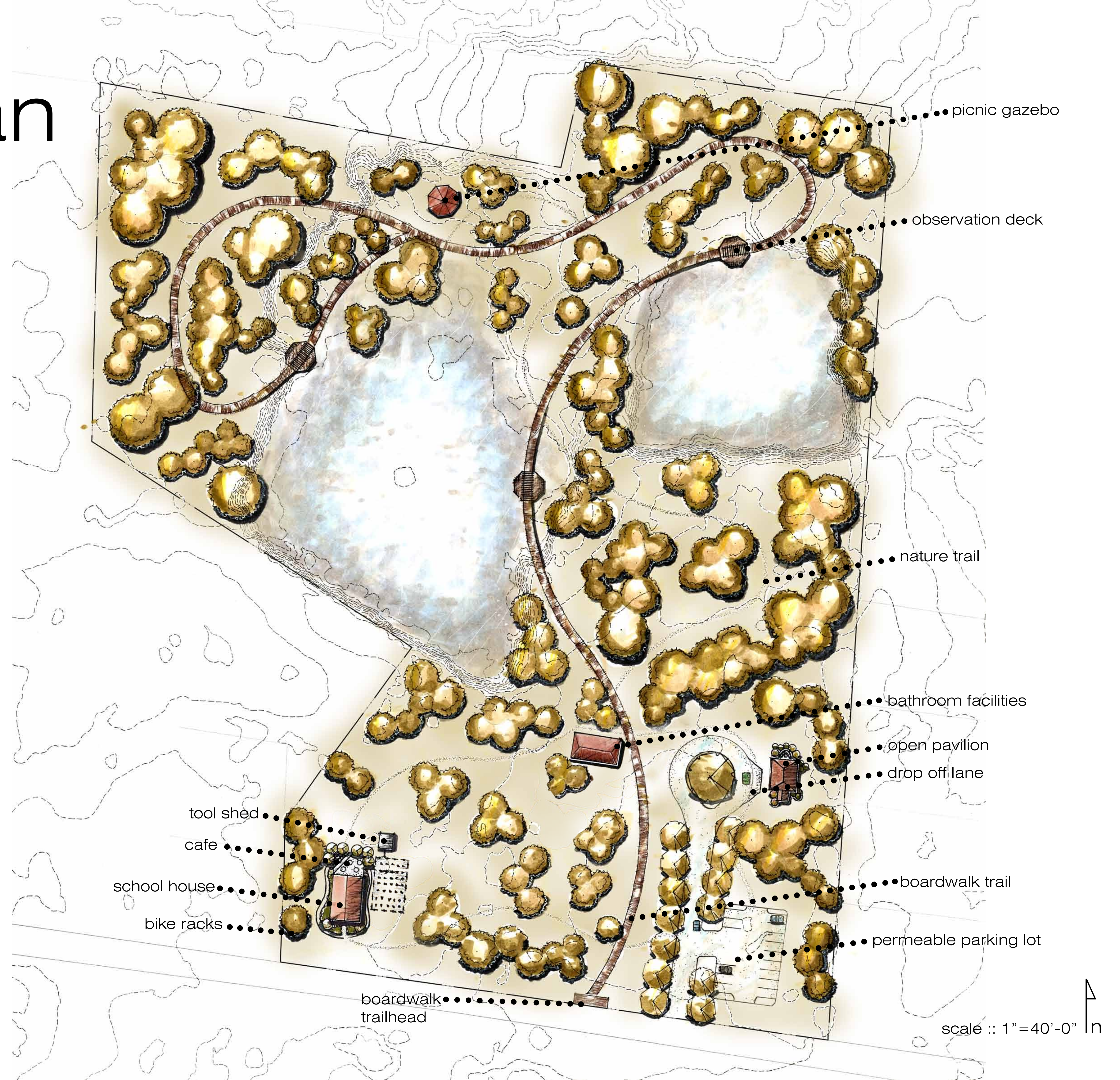
:: tori stevens

:: professor
Steffens

:: land 4900

:: spring 2014

master plan



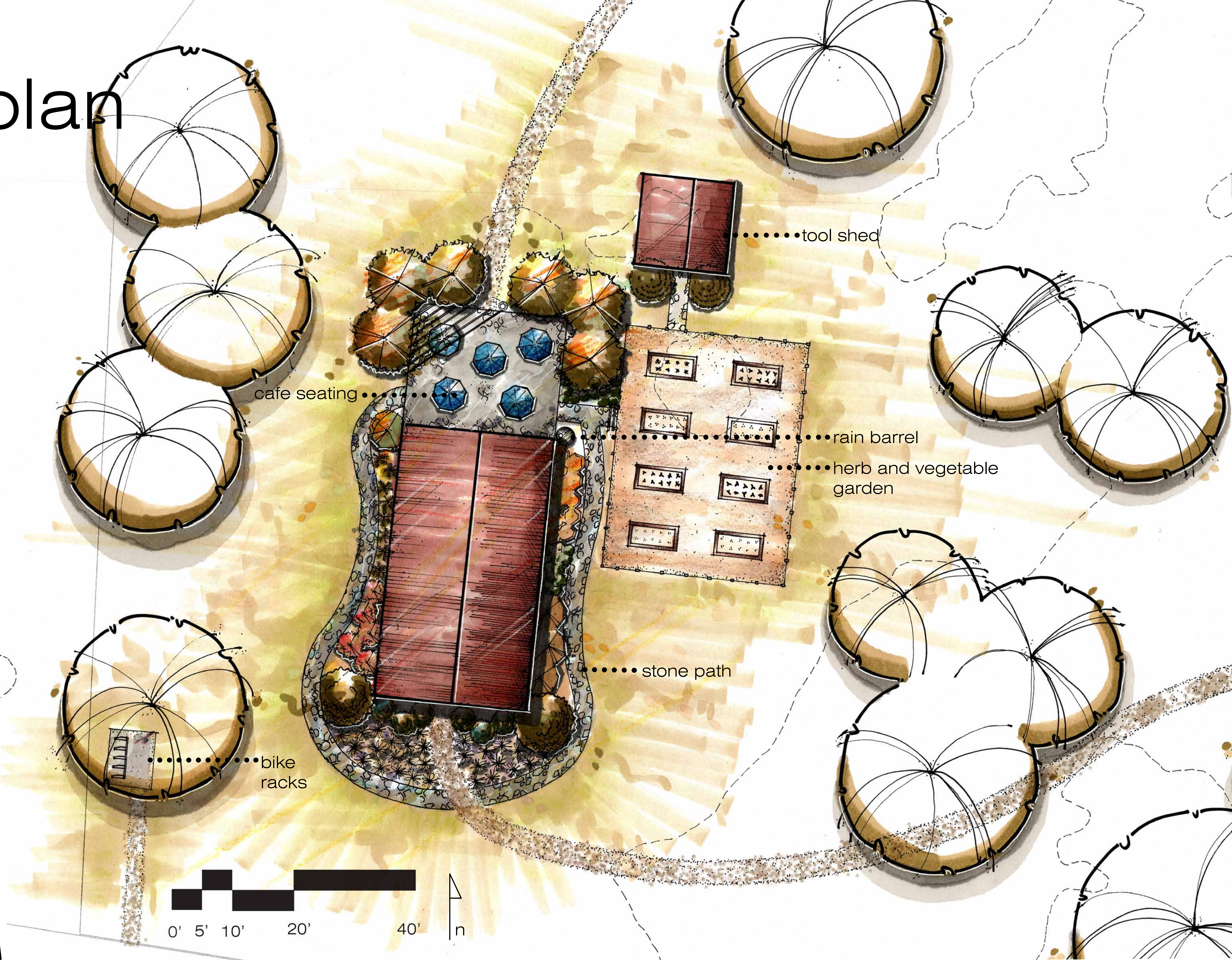
:: tori stevens

:: professor
Steffens

:: land 4900

:: spring 2014

site plan



..... tool shed

..... cafe seating

..... rain barrel
..... herb and vegetable garden

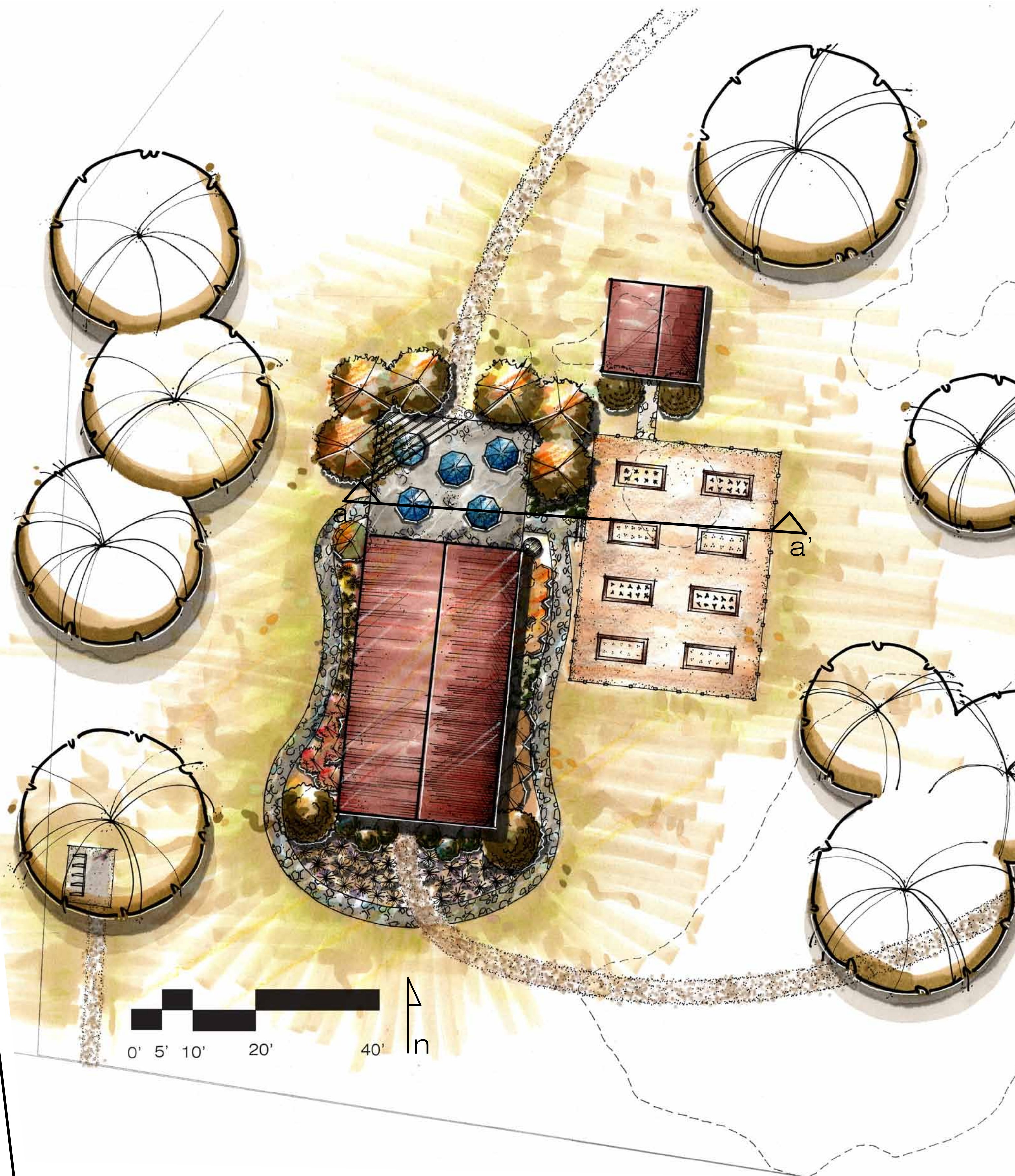
..... stone path

..... bike racks

:: tori stevens
:: professor Steffens
:: land 4900
:: spring 2014



site plan :: section + perspective



:: tori stevens
:: professor
Steffens
:: land 4900
:: spring 2014



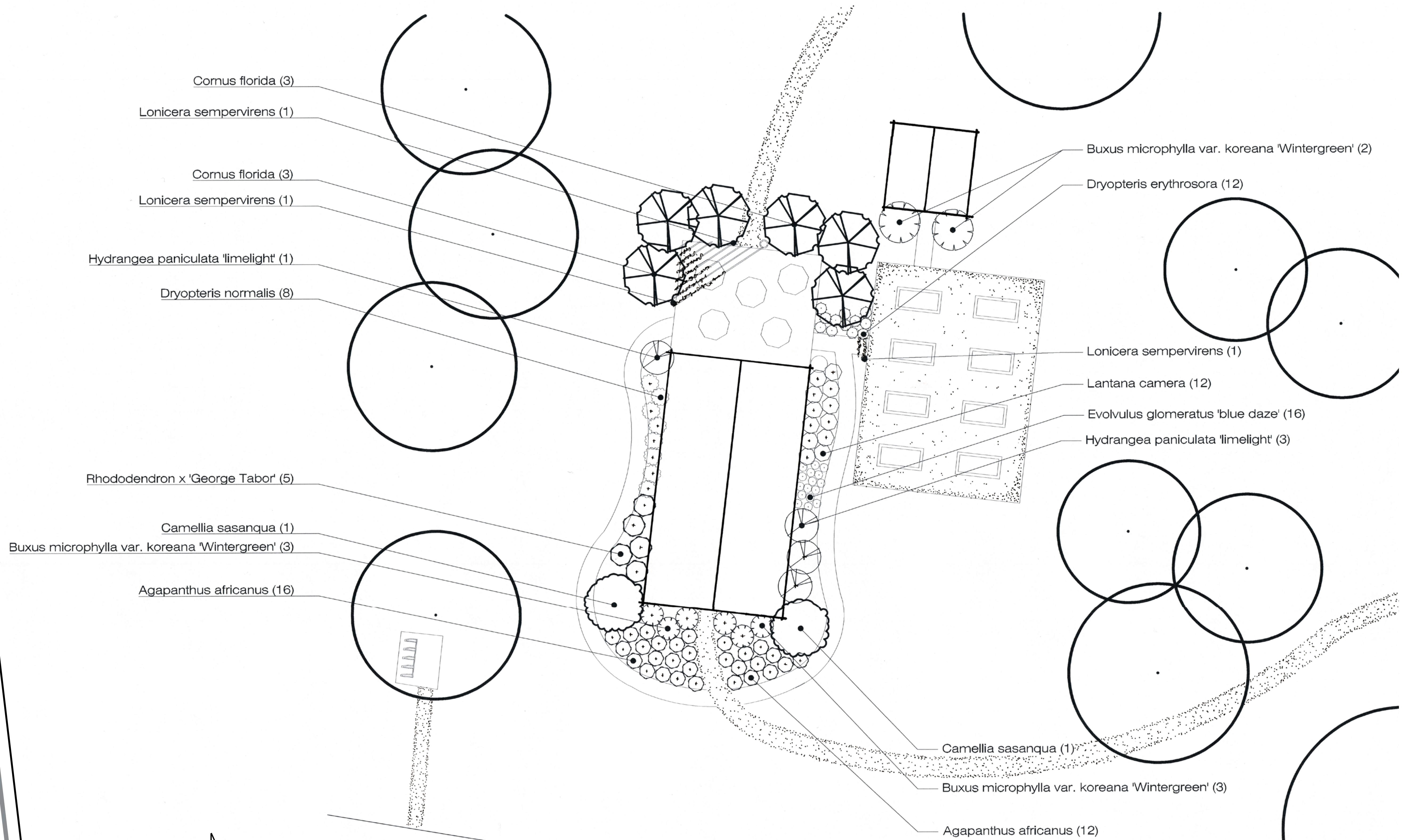
scale :: not to scale

perspective :: school house



section :: outdoor cafe + garden + tool shed

planting plan




:: tori stevens

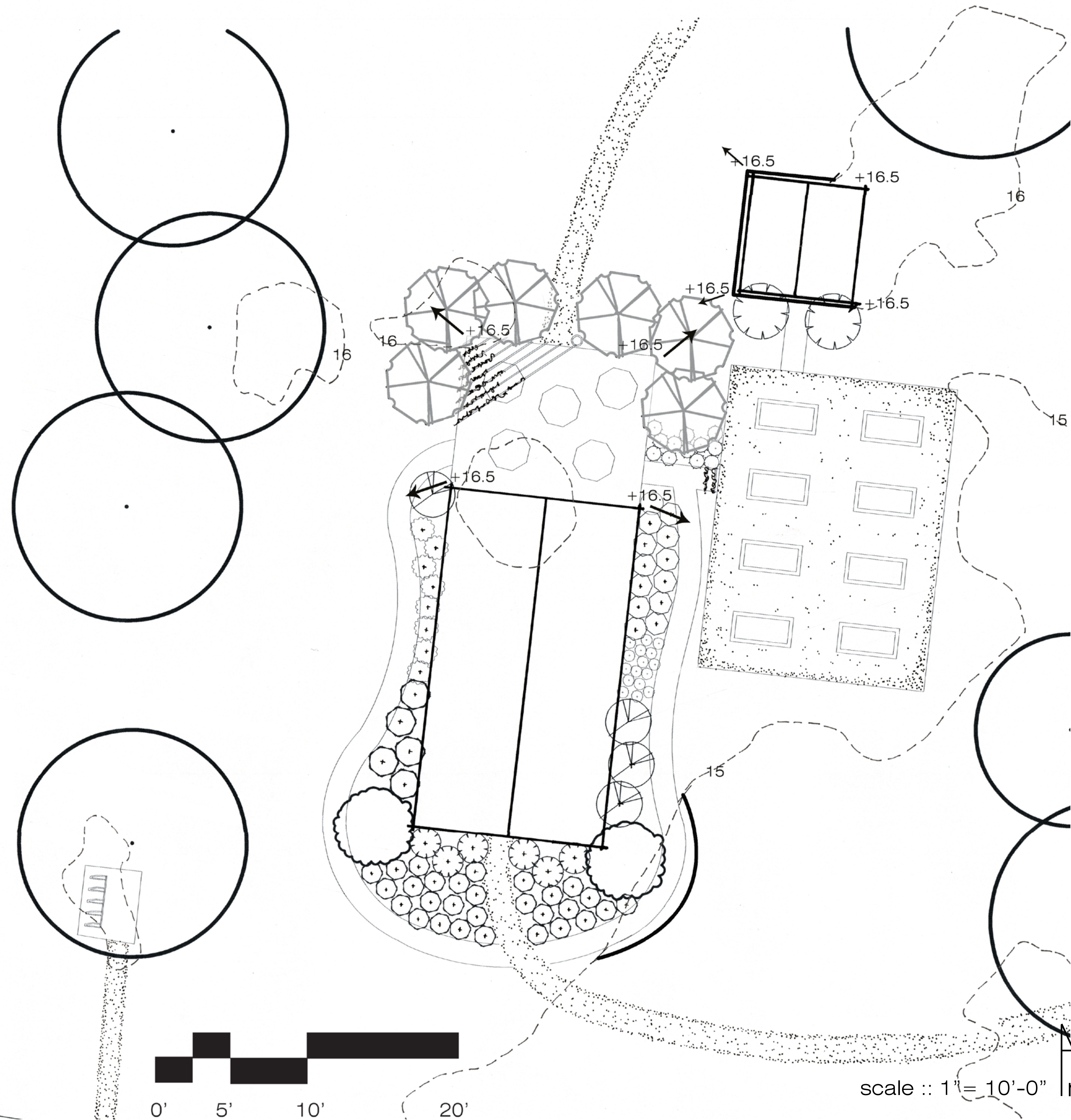
:: professor
Steffens

:: land 4900

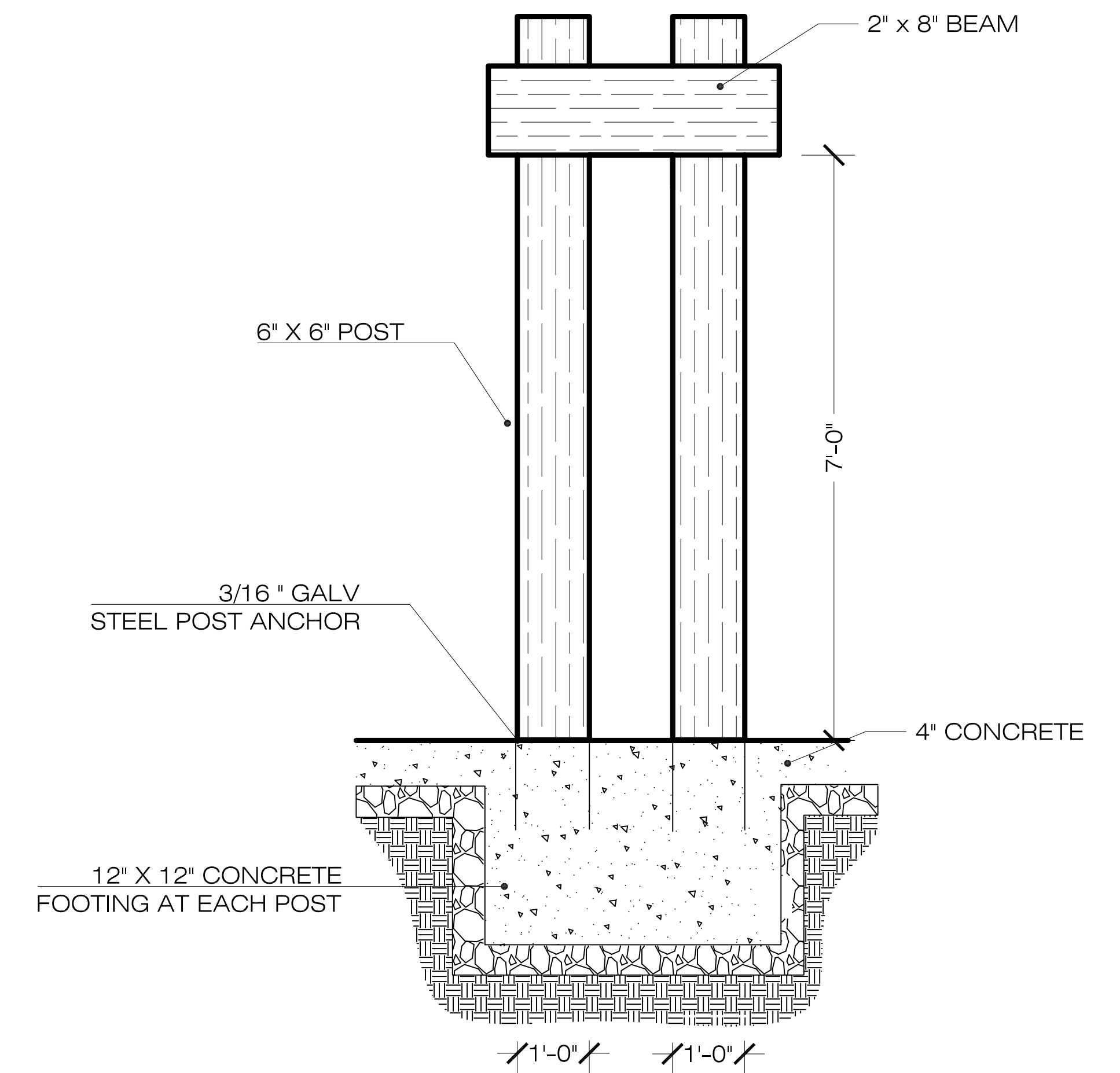
:: spring 2014

scale :: 1" = 10'-0" 

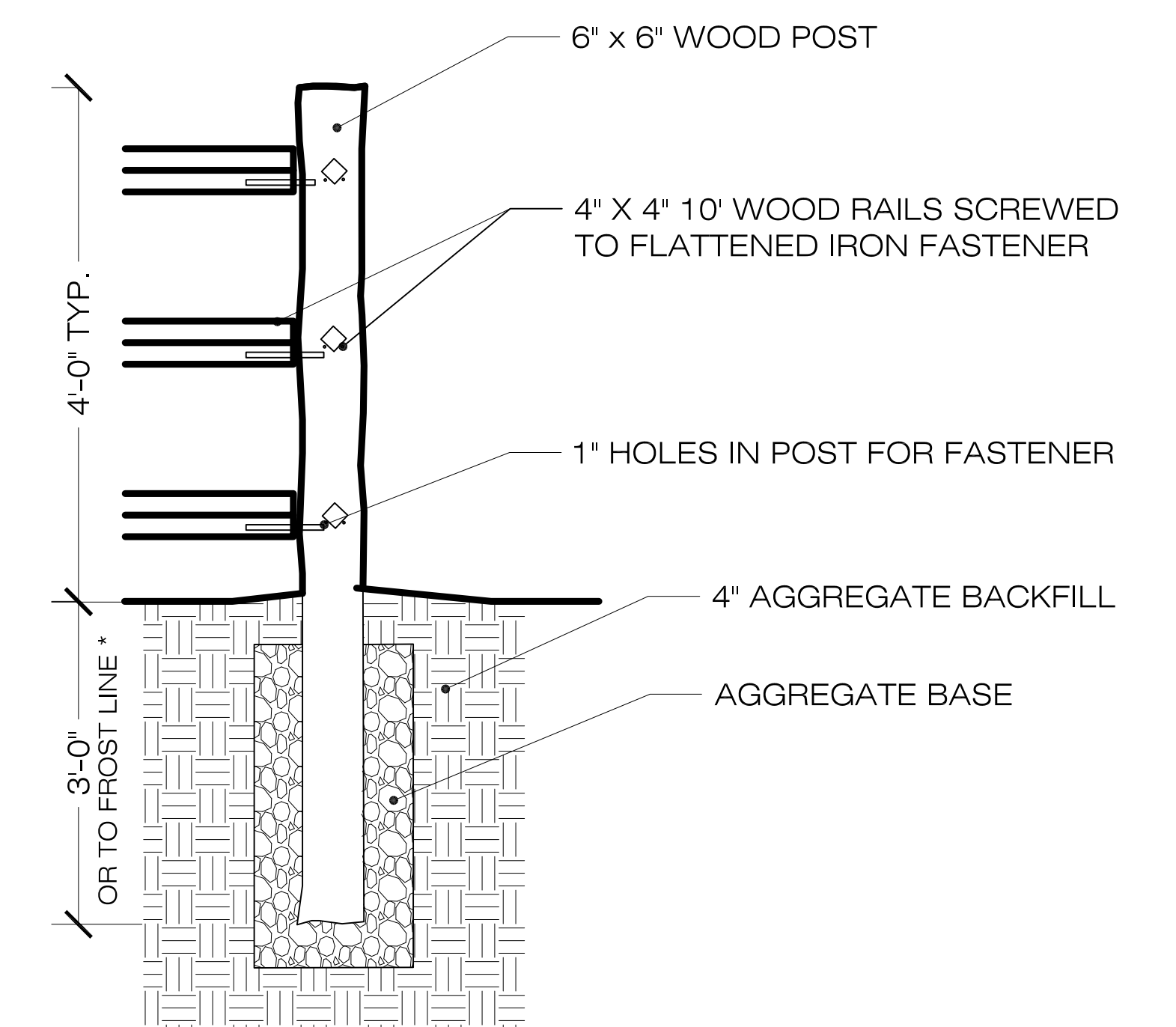
grading plan + construction details



:: tori stevens
 :: professor Steffens
 :: land 4900
 :: spring 2014



detail :: arbor + side view
 scale : 3/4" = 1'-0"



detail :: wood fence + post
 scale : 3/4" = 1'-0"

planting plan :: photo palette

:: trees + large shrubs

cornus florida :: dogwood tree



:: fall color
:: native
:: bloom time ::
march

camellia sasanqua :: sasanqua camellia



:: bloom time :: fall/winter

rhododendron x 'George Tabor' :: george tabor azalea



:: bloom time :: spring
:: salt tolerant

buxus microphylla 'wintergreen' :: wintergreen boxwood



:: deer resistant

:: shrubs

agapanthus africanus :: african lily



:: bloom time :: mid
summer to early fall

lantana camera :: lantana



:: fragrant
:: attracts wildlife

dryopteris normalis :: southern wood fern



:: woodland
garden plant

dryopteris erythrosora :: autumn fern



:: fall color

:: perennials

lonicera sempervirens :: trumpet vine



:: climbing/twining vine
:: attracts wildlife

:: vines

:: tori stevens

:: professor
Steffens

:: land 4900

:: spring 2014

planting plan :: plant list + cost estimate

Botanical Name	Common Name	Count	Size	Comments
Agapanthus africanus	African Lily	29	h: 1-3' w: 3'	
Amelanchier arborea	Serviceberry Tree	5	h: 25-30' w: 15-20'	
Aucuba japonica 'variegata'	Gold Dust Plant	2	h: 4-6' w: 4-6'	
Buxus microphylla var. koreana 'Wintergreen'	Wintergreen Boxwood	8	h: 5' w: 3'	deer resistant
Camellia sasanqua	Sasanqua Camellia	2	h: up tp 15' w: up tp 15'	prune to tree form
Cornus florida	Flowering Dogwood	6	h: 20' w: 20'	
Dryopteris erythrosora	Autumn Fern	12	h: 18" w: 18"	
Dryopteris normalis	Southern Wood Fern	22	h: 3' w: 2'	
Feijoa sellowiana	Pineapple Guava	1	h: 10-15' w: 10-15'	deer resistant
Fatsia japonica	Fatsia	6	h: 10-20' w: 7-18'	
Lantana camera	Lantana	12	h: up to 8' w: 4'	deer resistant
Lonicera sempervirens	Trumpet Honeysuckle	3	3-20' long	
Magnolia virginiana	Sweet Bay Magnolia	8	h: 10-35' w: 10-35'	
Miscanthus sinensis 'Adagio'	Adagio Madien Grass	10	h: 3-4" w: 3-4'	
Rhododendron x 'George Tabor'	George Tabor Azalea	11	h: 6-8' w: 4-6'	
Trachelospermum asiaticum	Asian Jasmine	465		

Cost Estimate			
	Cost	Quantity	Total
Agapanthus Africans (1G)	2.95	29	85.55
Amelanchier aroborea (15G)	60.00	5	300.00
Aucuba japonica 'variagata' (3G)	11.50	2	23.00
Buxus microphylla (3G)	7.00	8	56.00
Camellia sasanqua (3G)	16.25	2	32.50
Cornus florida (15G)	60.00	6	360.00
Dryopteris erythrosora (1G)	3.25	12	39.00
Dryopteris normalis (1G)	4.25	22	93.50
Feijoa sellowiana (15G)	60.00	1	60.00
Fatsia japonica (3G0)	12.50	6	75.00
Lantana camera (1G)	2.95	12	35.40
Lonicera sempervirens (3G)	9.50	3	28.50
Magnolia virginiana (15G)	60.00	8	480.00
Miscanthus sinensis 'adagio' (1G)	2.50	10	25.00
Rhododendronx'George Tabor' (3G)	6.50	11	71.50
Trachelospermum asiaticum (1G)	2.85	465	1325.25
			TOTAL: \$3090.20

:: tori stevens

:: professor
Steffens

:: land 4900

:: spring 2014

site plan

trashcan

seating
trail maps

vehicle turn around
roped bollards

boardwalk trail

seating
firepit

open pavilion

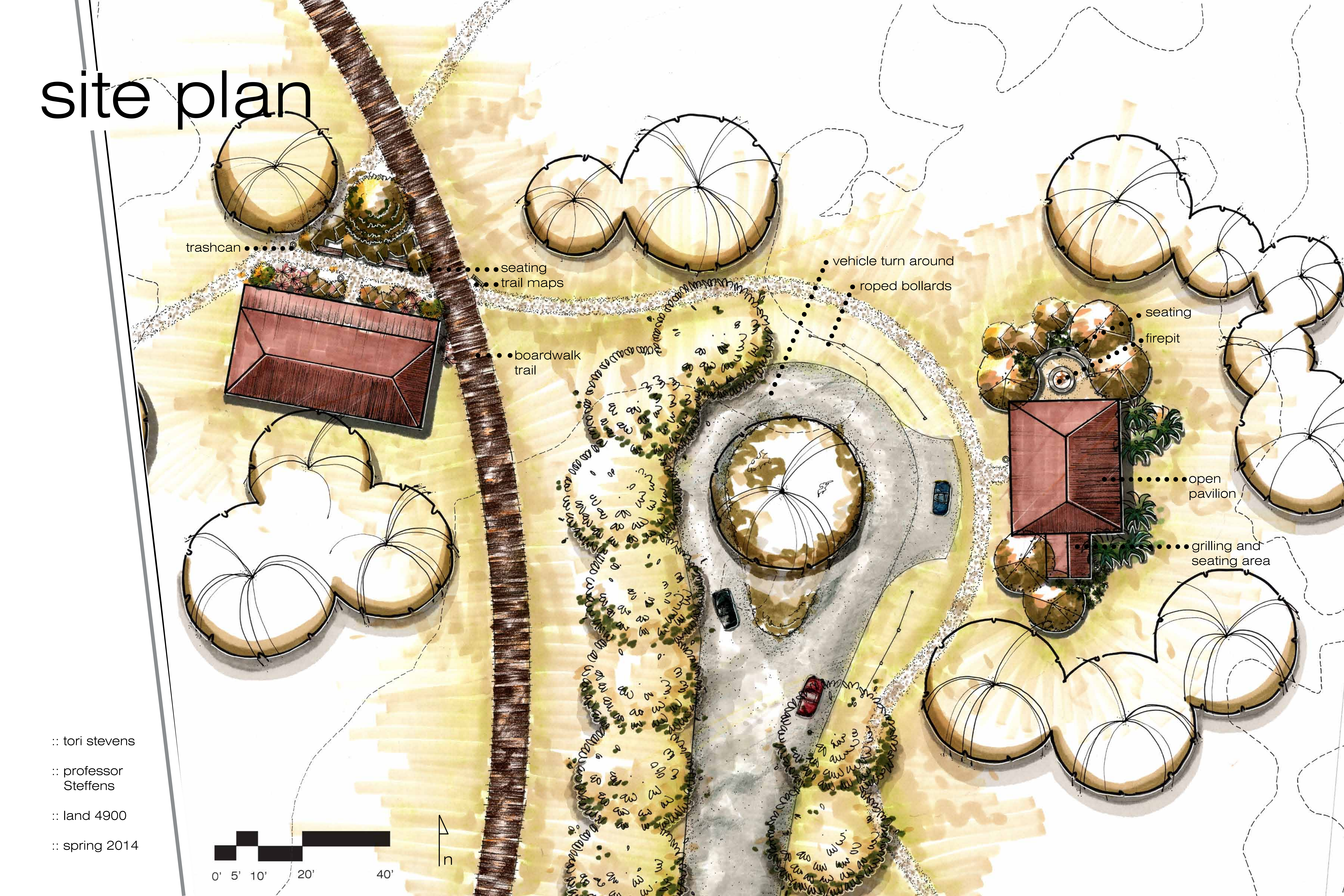
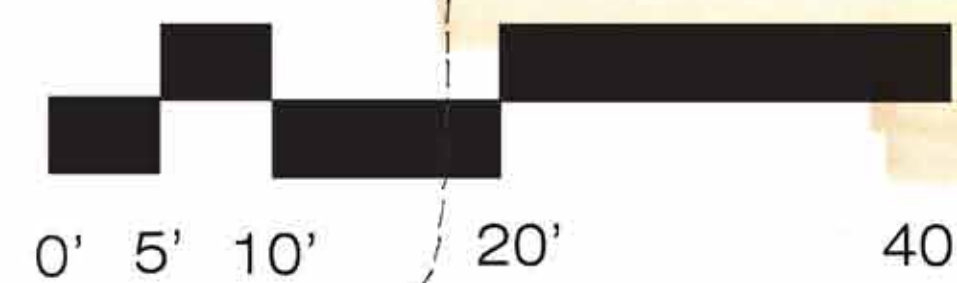
grilling and seating area

:: tori stevens

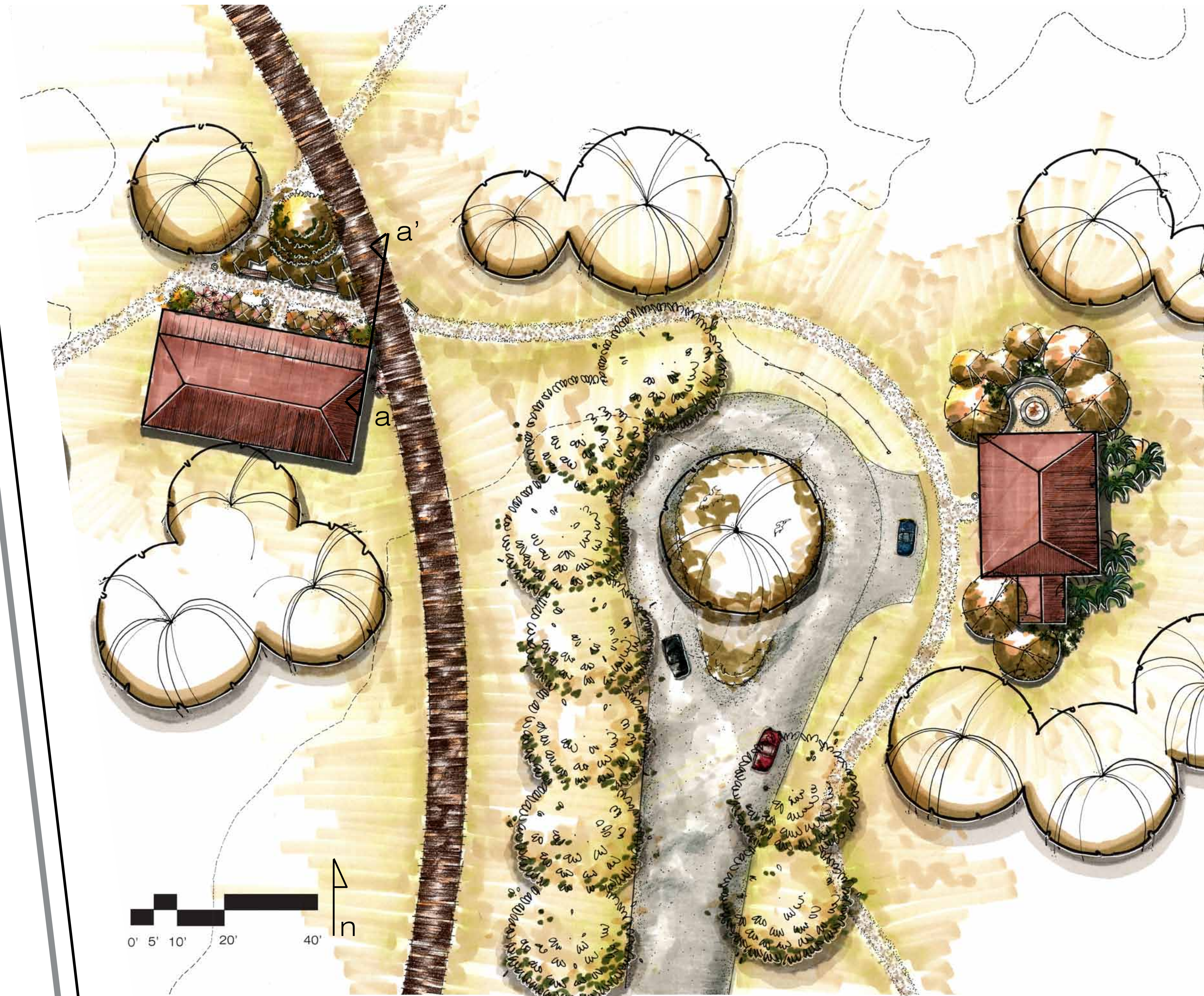
:: professor
Steffens

:: land 4900

:: spring 2014



site plan :: section + perspective



:: tori stevens
:: professor
Steffens
:: land 4900
:: spring 2014

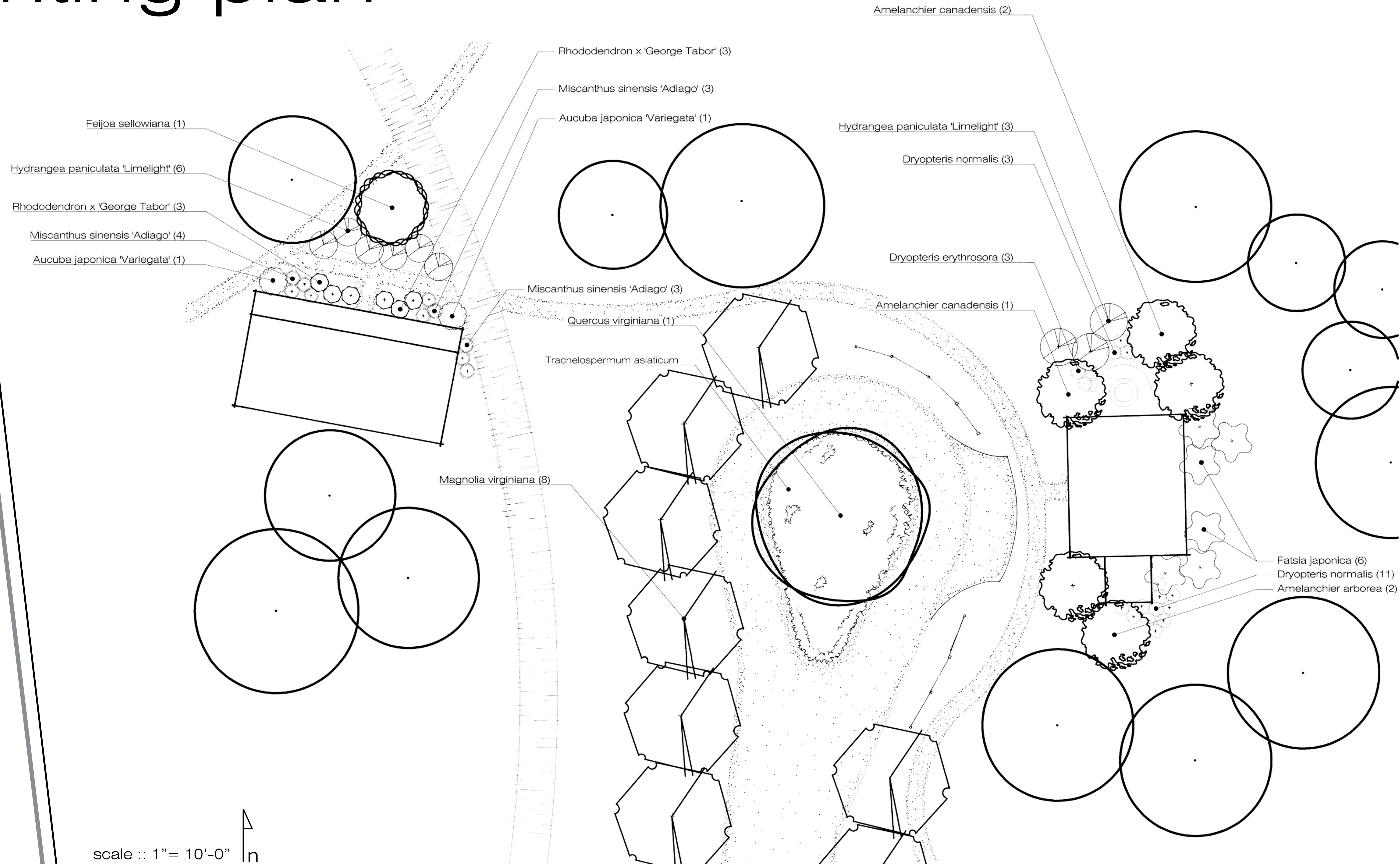


perspective :: firepit



a
section :: side view of restrooms + seating

planting plan



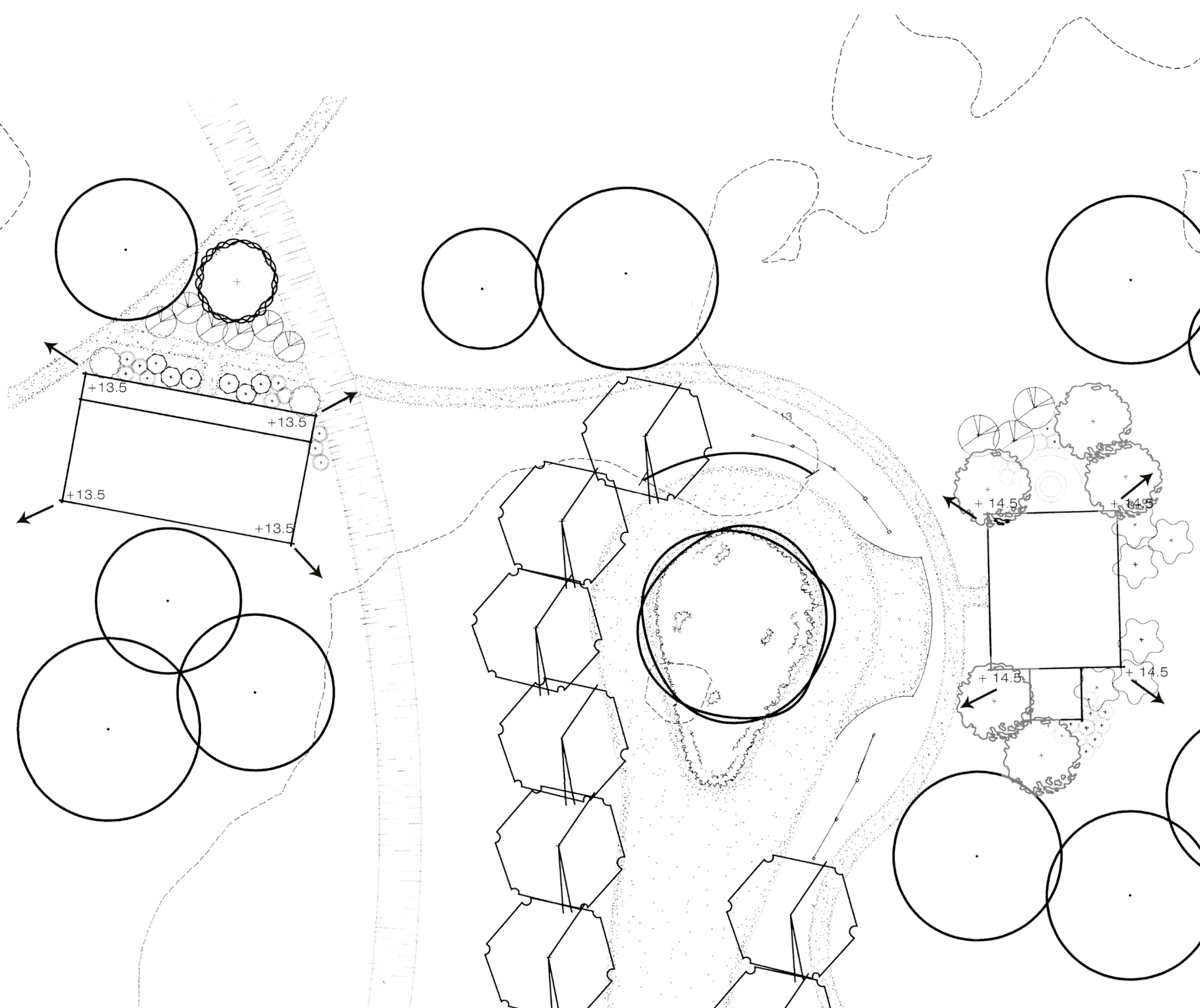
:: tori stevens

:: professor
Steffens

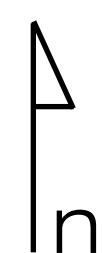
:: land 4900

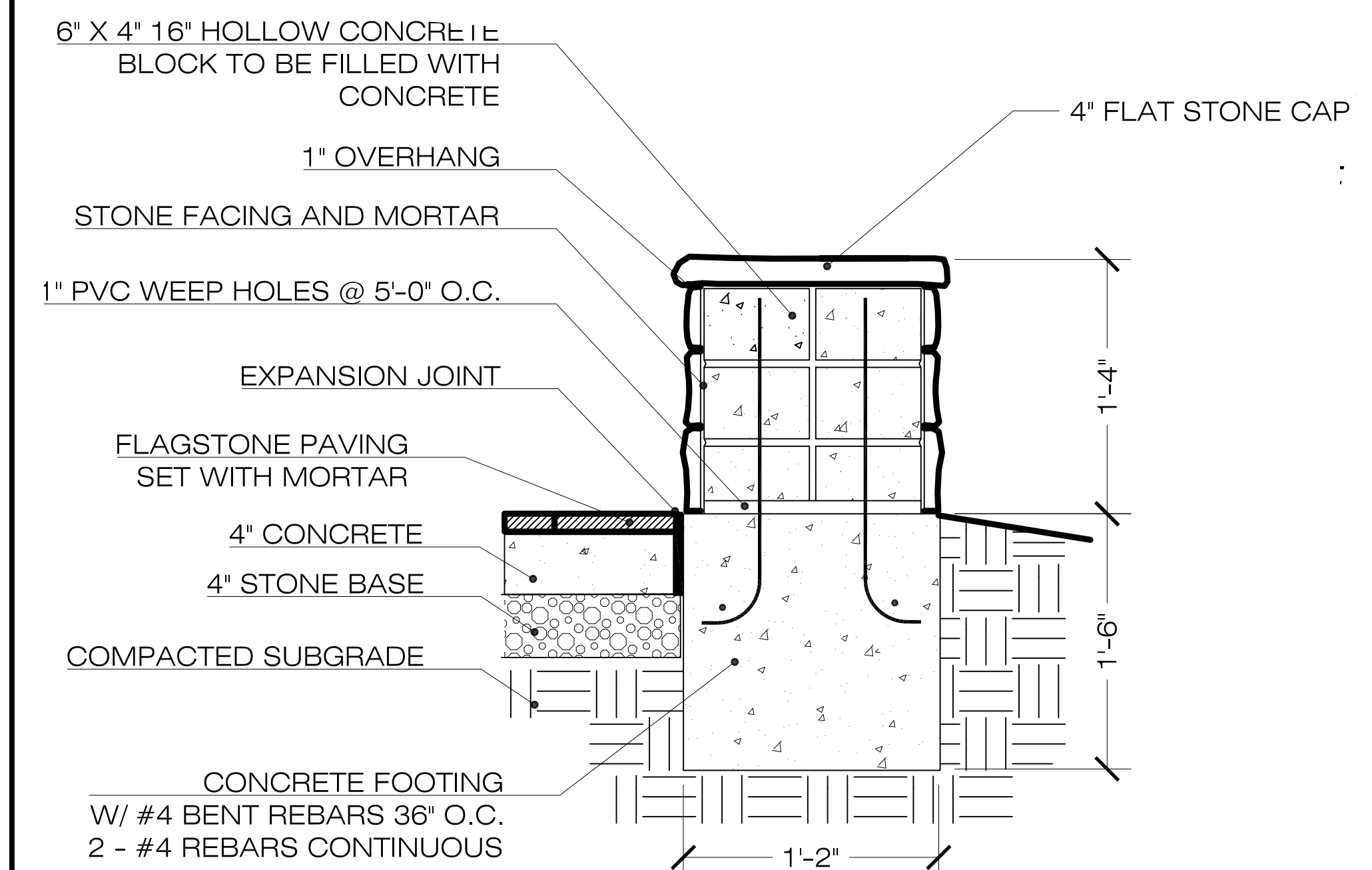
:: spring 2014

grading plan + construction details

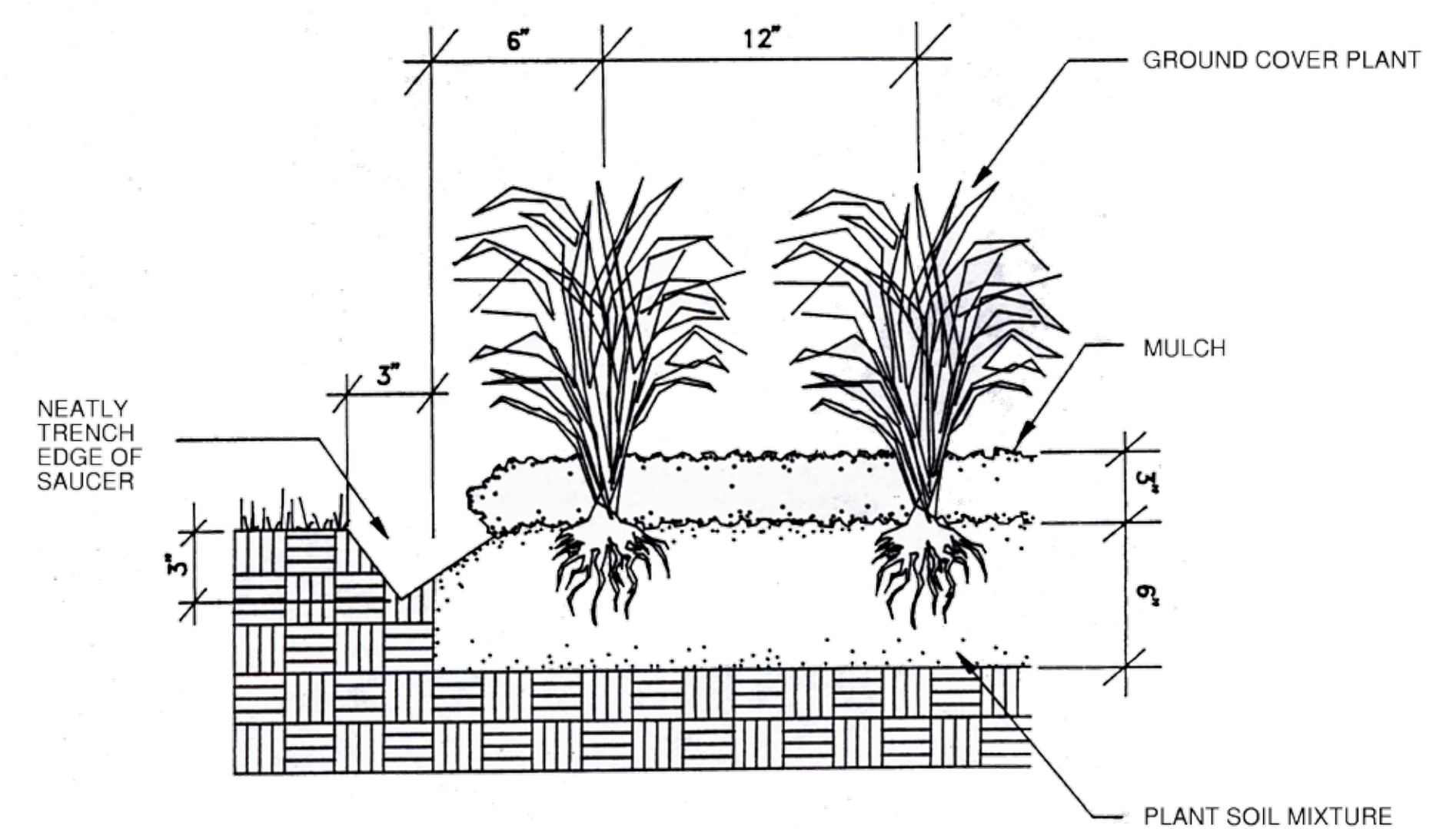


:: tori stevens
 :: professor Steffens
 :: land 4900
 :: spring 2014

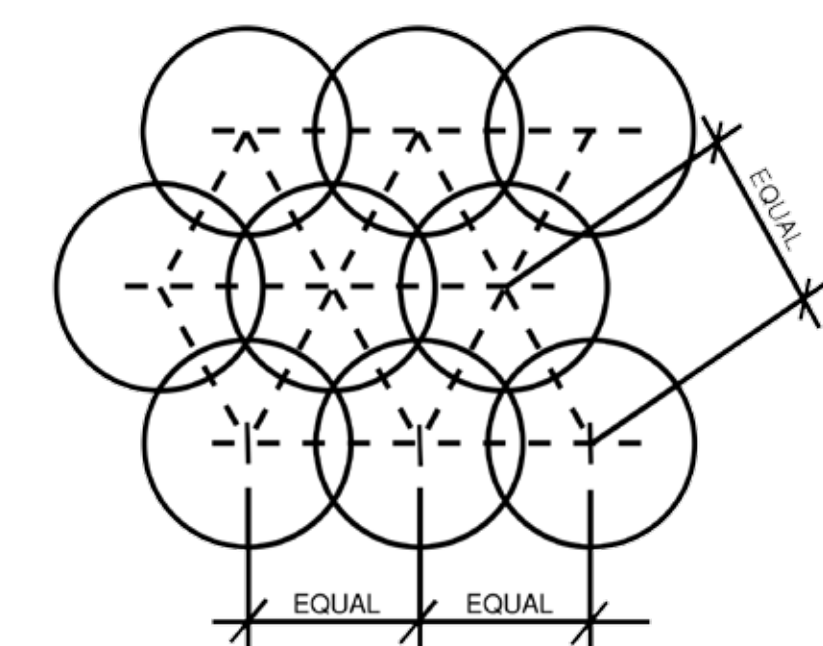
scale :: 1" = 10'-0" 



detail :: seat wall
 scale : 1 1/2" = 1'-0"



detail :: groundcover planting
 scale : not to scale



planting plan :: photo palette

:: trees + large shrubs

magnolia virginiana :: sweet bay magnolia



amelanchier arborea :: serviceberry tree



feijoa sellowiana :: pineapple guava



:: shrubs

rhododendron x 'George Tabor' :: george tabor azalea



aucuba japonica :: gold dust plant



fatsia japonica :: fatsia



:: perennials

miscanthus sinensis 'Adagio' :: maiden grass



dryopteris normalis :: southern wood fern



:: tori stevens

:: professor Steffens

:: land 4900

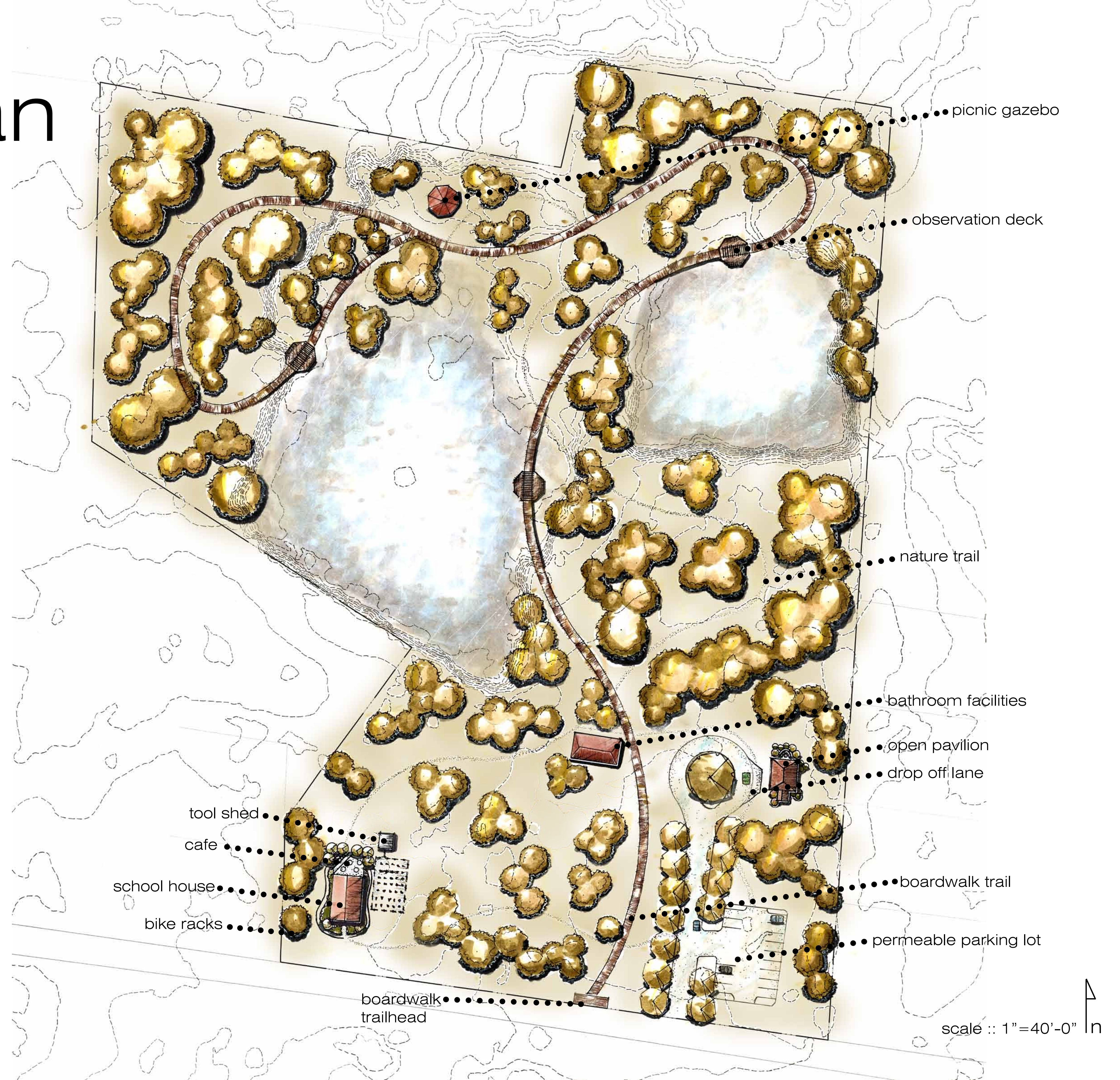
:: spring 2014

:: vines

trachelospermum asiaticum :: asian jasmine



master plan



:: tori stevens

:: professor
Steffens

:: land 4900

:: spring 2014