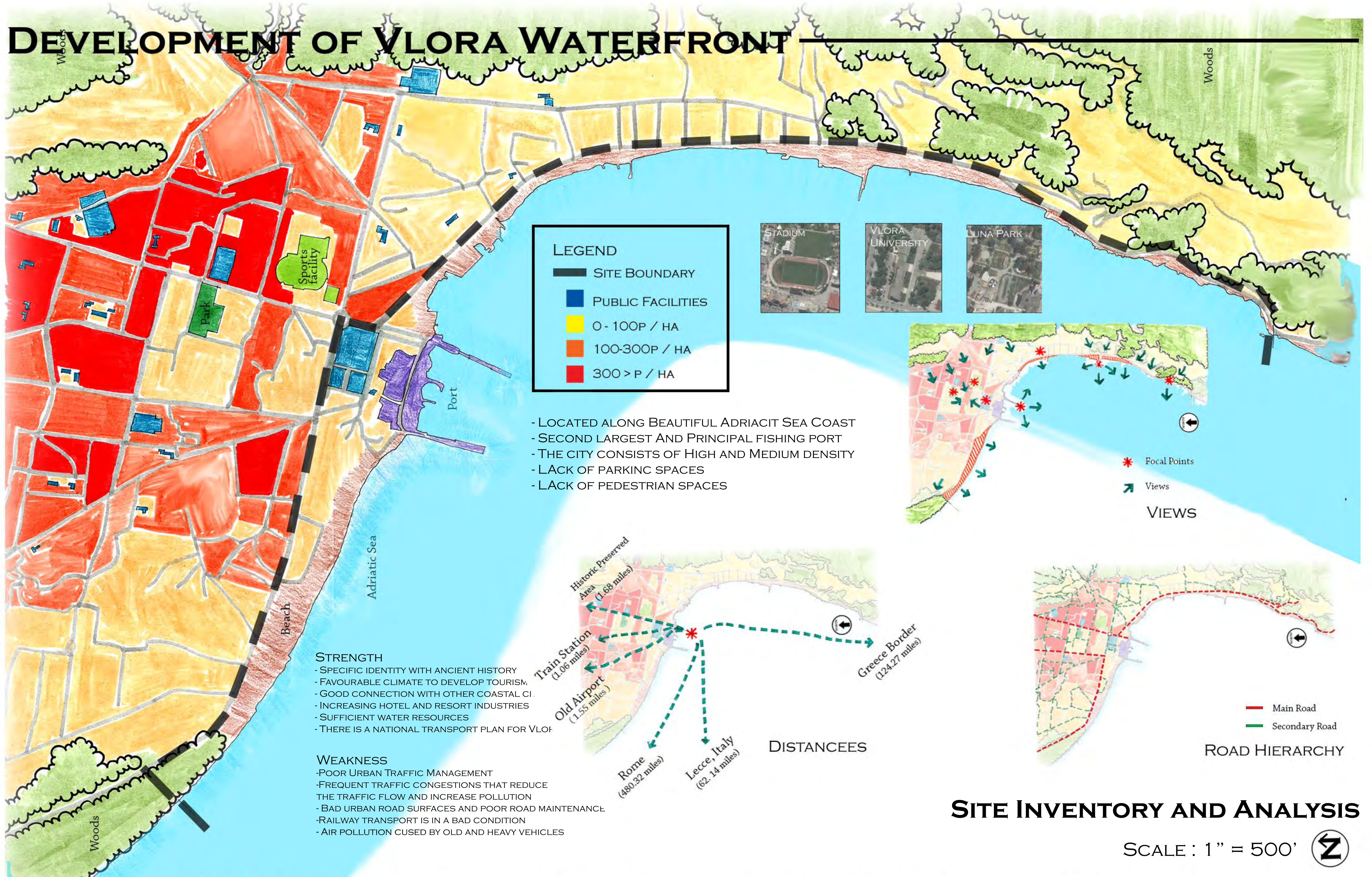


DEVELOPMENT OF VLORA WATERFRONT



LEGEND

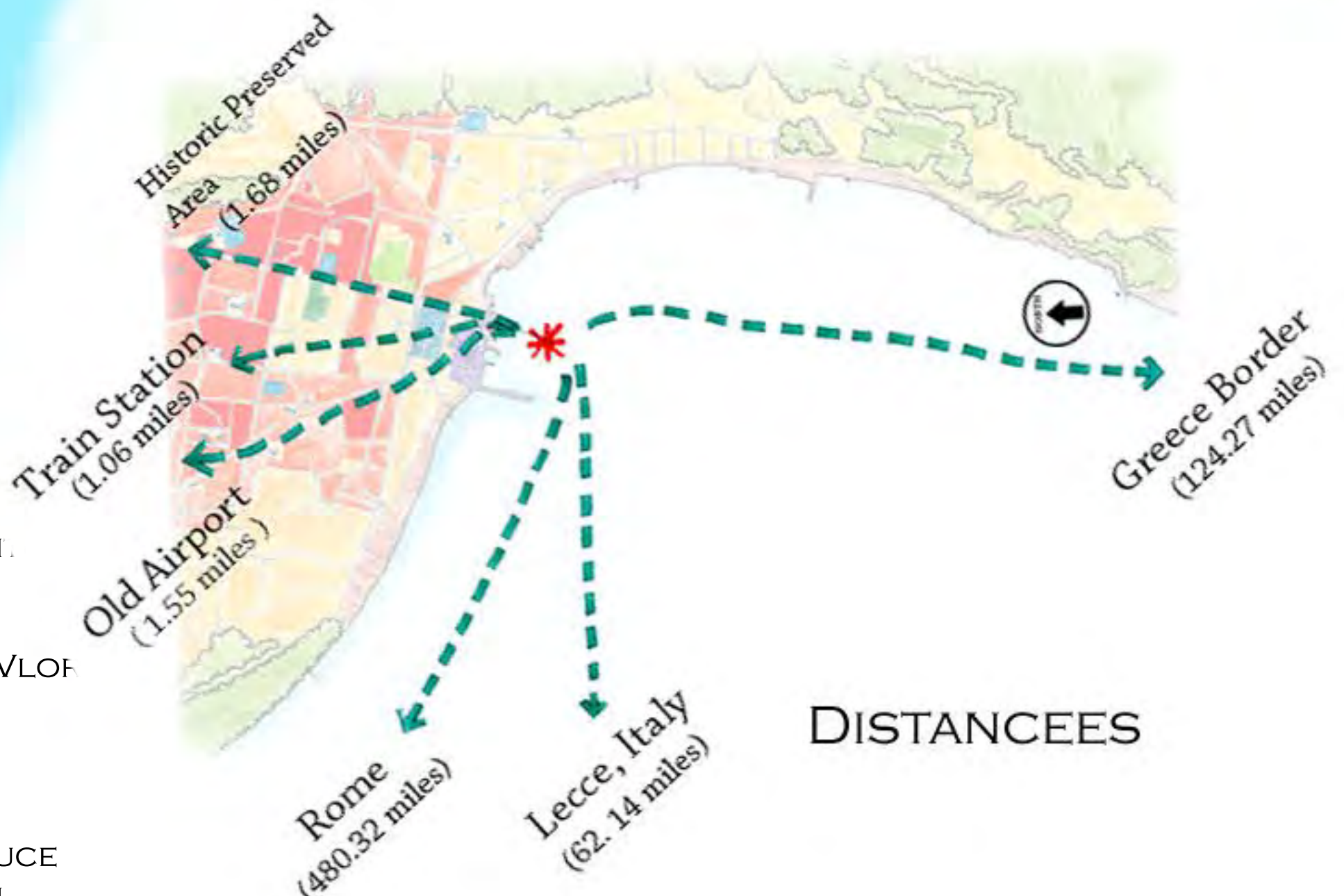
- SITE BOUNDARY
- PUBLIC FACILITIES
- 0- 100P / HA
- 100-300P / HA
- 300 > P / HA



- LOCATED ALONG BEAUTIFUL ADRIATIC SEA COAST
- SECOND LARGEST AND PRINCIPAL FISHING PORT
- THE CITY CONSISTS OF HIGH AND MEDIUM DENSITY
- LACK OF PARKING SPACES
- LACK OF PEDESTRIAN SPACES



- STRENGTH**
- SPECIFIC IDENTITY WITH ANCIENT HISTORY
 - FAVOURABLE CLIMATE TO DEVELOP TOURISM.
 - GOOD CONNECTION WITH OTHER COASTAL CI.
 - INCREASING HOTEL AND RESORT INDUSTRIES
 - SUFFICIENT WATER RESOURCES
 - THERE IS A NATIONAL TRANSPORT PLAN FOR VLOF
- WEAKNESS**
- POOR URBAN TRAFFIC MANAGEMENT
 - FREQUENT TRAFFIC CONGESTIONS THAT REDUCE THE TRAFFIC FLOW AND INCREASE POLLUTION
 - BAD URBAN ROAD SURFACES AND POOR ROAD MAINTENANCE
 - RAILWAY TRANSPORT IS IN A BAD CONDITION
 - AIR POLLUTION CUSED BY OLD AND HEAVY VEHICLES



SITE INVENTORY AND ANALYSIS

SCALE : 1" = 500'

DEVELOPMENT OF VLORA WATERFRONT

VLORA, ALBANIA IS THE ONE OF THE LARGEST TOWNS AND THE SECOND LARGEST PORT CITY OF ALBANIA. IT IS A HISTORICALLY VALUABLE CITY SO IT HAS MEANINGFUL HISTORICAL AND ARCHEOLOGICAL BUILDINGS AND LANDMARKS. THAT ALLOWS VLORA TO BE ONE OF THE MOST ATTRACTIVE TOURISM CITIES IN THE EASTERN PART OF THE MEDITERRANEAN SEA. HOWEVER, VLORA ALSO HAS MANY PROBLEMS ASSOCIATED WITH UNMANAGED URBANIZATION SUCH AS POOR INFRASTRUCTURE. THIS IS DUE TO THE CITY'S LACK OF AN APPROPRIATE MASTERPLAN. VLORA IS IN MEDITERRANEAN CLIMATE SO THE BEACH COULD BE AN ATTRACTIVE PLACE FOR THE TOURISTS. HOWEVER, MANY OF VLORA'S BEACH ARE UNDEVELOPED AND LEFT AS NATURAL SAND BEACHES. I BELIEVE THIS CAN BE MORE ATTRACTIVE PLACE IF IT'S DESIGNED WITH AN APPROPRIATE PLAN. THEREFORE, I WANTED TO SUGGEST AN OVERALL DEVELOPMENT PLAN FOR VLORA WATERFRONT.

CURRENTLY, MOST OF VLORA'S BEACH ARE UNDEVELOPED. UNDEVELOPED SAND BEACH IS BEAUTIFUL BUT IT CAN BE MORE ATTRACTIVE IF IT'S HARMONIZED WITH DEVELOPED HARDSCAPE, SUCH AS BEAUTIFUL MARINAS AND PIERS. MY OVERALL CONCEPT IS FOCUSED IN THE DEVELOPMENT OF CURRENT WATERFRONT. I WANTED TO GIVE A SYMBOLIC WING TO THE VLORA SO IT CAN ECONOMICALLY GROW AND IMPROVE. THE IDEA OF WINGS MADE ME COME UP WITH AN IDEA OF 'EAGLE', WHICH EXISTS IN ALBANIAN NATIONAL FLAG. SO, I INTENDED TO MAKE THE COASTLINE LOOK LIKE AN ABSTRACT FLYING EAGLE.

AS I MENTIONED ABOVE, THE COASTLINE OF VLORA WATERFRONT IS DESIGNED TO LOOK LIKE THE WING OF A FLYING EAGLE. THE COASTLINE IS IN NATURAL CURVILINEAR SHAPE AND IT ALLOWS PEOPLE TO HAVE AN INTERESTING WALKING EXPERIENCE. IN ORDER TO PROVIDE A WALKING EXPERIENCE ALONG THE BEACH, I ALSO CREATED ESPLANADE ALONG THE COASTLINE. ALSO, I INTENDED THE CENTER OF TWO PORTS LOOK LIKE A HEAD OF AN EAGLE.



OUTSIDE THEATER



BEACH ESPLANADE



MUSEUM



VLORA SITE

- COMMERCIAL BUILDINGS
- MIXED USE BUILDINGS
- SINGLE FAMILY HOUSING

MASTER PLAN

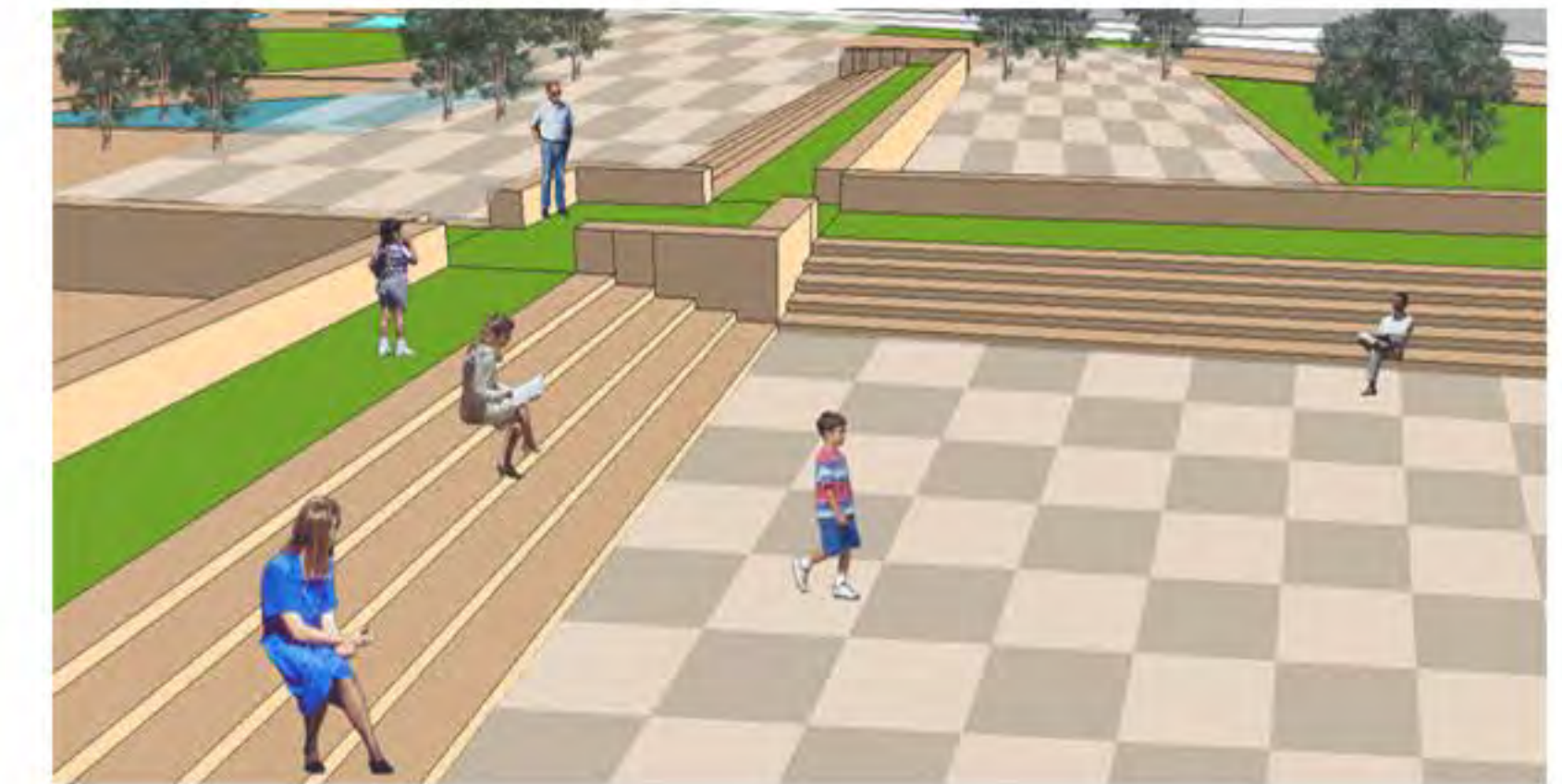
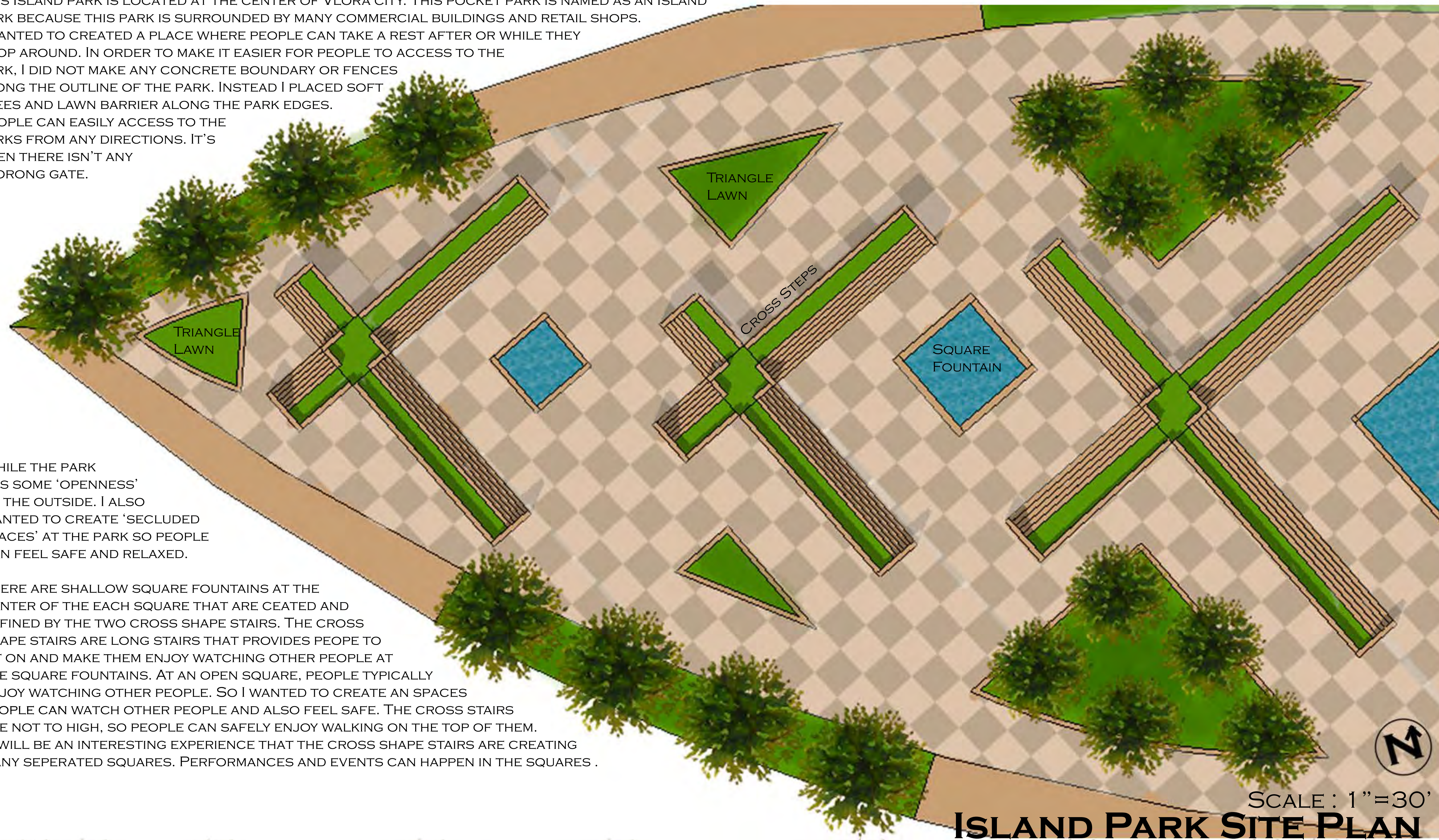
N SCALE : 1" = 300'

DEVELOPMENT OF VLORA WATERFRONT

THIS ISLAND PARK IS LOCATED AT THE CENTER OF VLORA CITY. THIS POCKET PARK IS NAMED AS AN ISLAND PARK BECAUSE THIS PARK IS SURROUNDED BY MANY COMMERCIAL BUILDINGS AND RETAIL SHOPS. I WANTED TO CREATED A PLACE WHERE PEOPLE CAN TAKE A REST AFTER OR WHILE THEY SHOP AROUND. IN ORDER TO MAKE IT EASIER FOR PEOPLE TO ACCESS TO THE PARK, I DID NOT MAKE ANY CONCRETE BOUNDARY OR FENCES ALONG THE OUTLINE OF THE PARK. INSTEAD I PLACED SOFT TREES AND LAWN BARRIER ALONG THE PARK EDGES. PEOPLE CAN EASILY ACCESS TO THE PARKS FROM ANY DIRECTIONS. IT'S OPEN THERE ISN'T ANY STORONG GATE.

WHILE THE PARK HAS SOME 'OPENNESS' TO THE OUTSIDE, I ALSO WANTED TO CREATE 'SECLUDED PLACES' AT THE PARK SO PEOPLE CAN FEEL SAFE AND RELAXED.

THERE ARE SHALLOW SQUARE FOUNTAINS AT THE CENTER OF THE EACH SQUARE THAT ARE CEATED AND DEFINED BY THE TWO CROSS SHAPE STAIRS. THE CROSS SHAPE STAIRS ARE LONG STAIRS THAT PROVIDES PEOPLE TO SIT ON AND MAKE THEM ENJOY WATCHING OTHER PEOPLE AT THE SQUARE FOUNTAINS. AT AN OPEN SQUARE, PEOPLE TYPICALLY ENJOY WATCHING OTHER PEOPLE. SO I WANTED TO CREATE AN SPACES PEOPLE CAN WATCH OTHER PEOPLE AND ALSO FEEL SAFE. THE CROSS STAIRS ARE NOT TO HIGH, SO PEOPLE CAN SAFELY ENJOY WALKING ON THE TOP OF THEM. IT WILL BE AN INTERESTING EXPERIENCE THAT THE CROSS SHAPE STAIRS ARE CREATING MANY SEPERATED SQUARES. PERFORMANCES AND EVENTS CAN HAPPEN IN THE SQUARES .



CROSS STEPS



TRIANGLE LAWN



SQUARE FOUNTAIN

