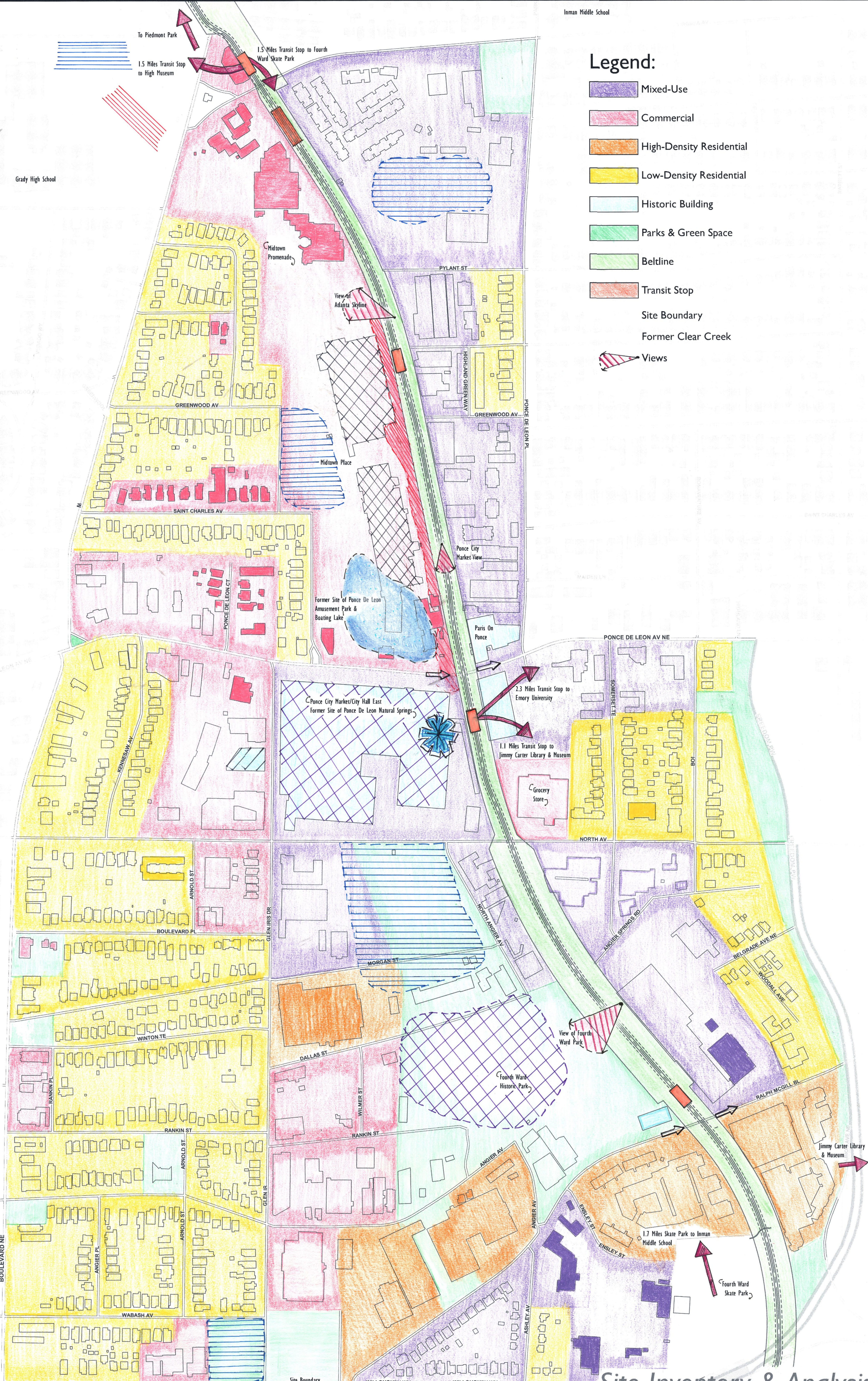


Revitalizing Midtown *The Eastern Quadrant of The Atlanta Beltline*



Legend:

- Mixed-Use
- Commercial
- High-Density Residential
- Low-Density Residential
- Historic Building
- Parks & Green Space
- Beltline
- Transit Stop
- Site Boundary
- Former Clear Creek
- Views

Scale 1" = 200' 0"

Site Inventory & Analysis

Revitalizing Midtown *The Eastern Quadrant of The Atlanta Beltline*

The design approach for this project was focused on creating a mixed-use community that would allow for sustainable growth. The project location is defined by the Atlanta Beltline, a transformative transportation project currently undergoing construction which will provide a street car and pedestrian corridor throughout the entire city. The community is integrated with the BeltLine, allowing for a pleasant and highly accessible transit system. In order to promote a greater sense of a community, an abundance of public spaces were incorporated into the urban design. These green spaces and pocket parks serve to alleviate the environmental degradation of an urban core, promote citizen connectivity, and raise the wellness of the general populous. In order to further promote economic development, a business district was proposed for the North East corner of the property. Business located here include a conference center, hotel, small business development center, and an entertainment revenue. These additions to the local market would not only boost tourism, but also provide employment opportunities for the surrounding residential communities.



Streetscape Perspective

In coordination with the transportation efforts of the BeltLine, pedestrian and bicycle-only pathways were integrated into the core of the design. These pathways provide accessibility for the residents of the community to local businesses, public services, and the abundance of proposed urban spaces. In order to create a sustainable and cohesive city environment-architectural character and green technologies were proposed through a series of perspective graphics. The addition of environmentally sustainable solutions including rooftop gardens, rain gardens, and living walls were implemented throughout public institutions in order to lower the ecological degradation caused by an urban environment. Residents of the area are encouraged to participate in agriculture by the provision of community gardens. These gardens may be found in a courtyard, public plaza, or within a rooftop garden.

The conceptual form of the mixed use community was inspired by the historic Ponce City Springs of the area. These springs brought tourism, enjoyment, and eventually development to the area- acting as an important center for the built environment that was constructed thereafter. The design concept seeks to acknowledge the Springs as the city center, and circulation patterns radiate from this central node. The large City Hall East building, now a vibrant mixed use community, reinforces the concept by acting as a large anchor at the center of the urban core.



Perspective of Community Plaza



- Legend:**
- Mixed-Use
 - Commercial
 - Residential
 - Parks
 - Institutional

Master Plan Scale 1" = 200'



Perspective of Pedestrian Corridor

The Rooftop Transit Station *The Eastern Quadrant of The Atlanta Beltline*



View of South Entry & Architectural Character

In order to provide accessibility to the Beltline Streetcar- this Transit Stop Design provides a unique opportunity for public gatherings and community events. With a plethora of outdoor rooms and personal relaxation areas, the Rooftop Terrace would welcome new commuters to their destination with a distant and vibrant character. The Transit Stop Design incorporates traditional design elements, addresses the extreme grade change from the surrounding residential neighborhoods, and is an example of sustainable landscape practices integrated into an urban plaza. The rooftop garden serves as both a destination and an efficient path for circulation. After exiting a train, a pedestrian may choose to use either of the stairwells to get down to the lower plaza or they may travel directly to the next building by utilizing the skywalk. The rooftop garden also has a small cafe for refreshments and an elevator for ADA accessibility. Offering a variety of circulation routes, the Rooftop Transit Garden is a sustainable solution to both overcome the steep terrain, as well as to create a distinct character by which to remember the BeltLine.



View of Transit Stop and Rooftop Garden From Bridge



On the West side of the Transit stop, there is a steep slope which had to be planned for. Utilizing site context, the designer integrated "green", sustainable technologies into the design solution. Stairwells flank the transit stop to the North and South, offering a brief walk down to the Ground Level Plaza. The stairwell is both protected from the elements, as well as given an educational value with the employment of a modern "Living-Wall." This Vegetated Wall is a key design component of the site, as it offers aesthetic, environmental, economic, and educational benefits.

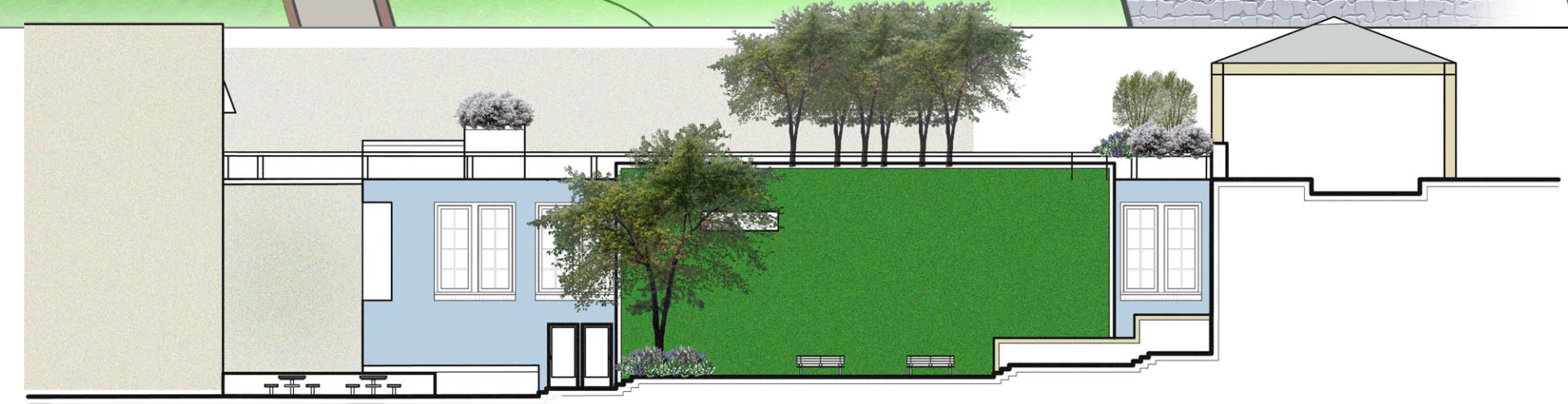


Birds Eye Perspective of Rooftop Garden

Master Plan Scale 1" = 10' 0"



Section Cut Through Rooftop Garden Scale 1" = 20' 0"



Section Cut Through Ground Level Plaza Scale 1" = 20' 0"