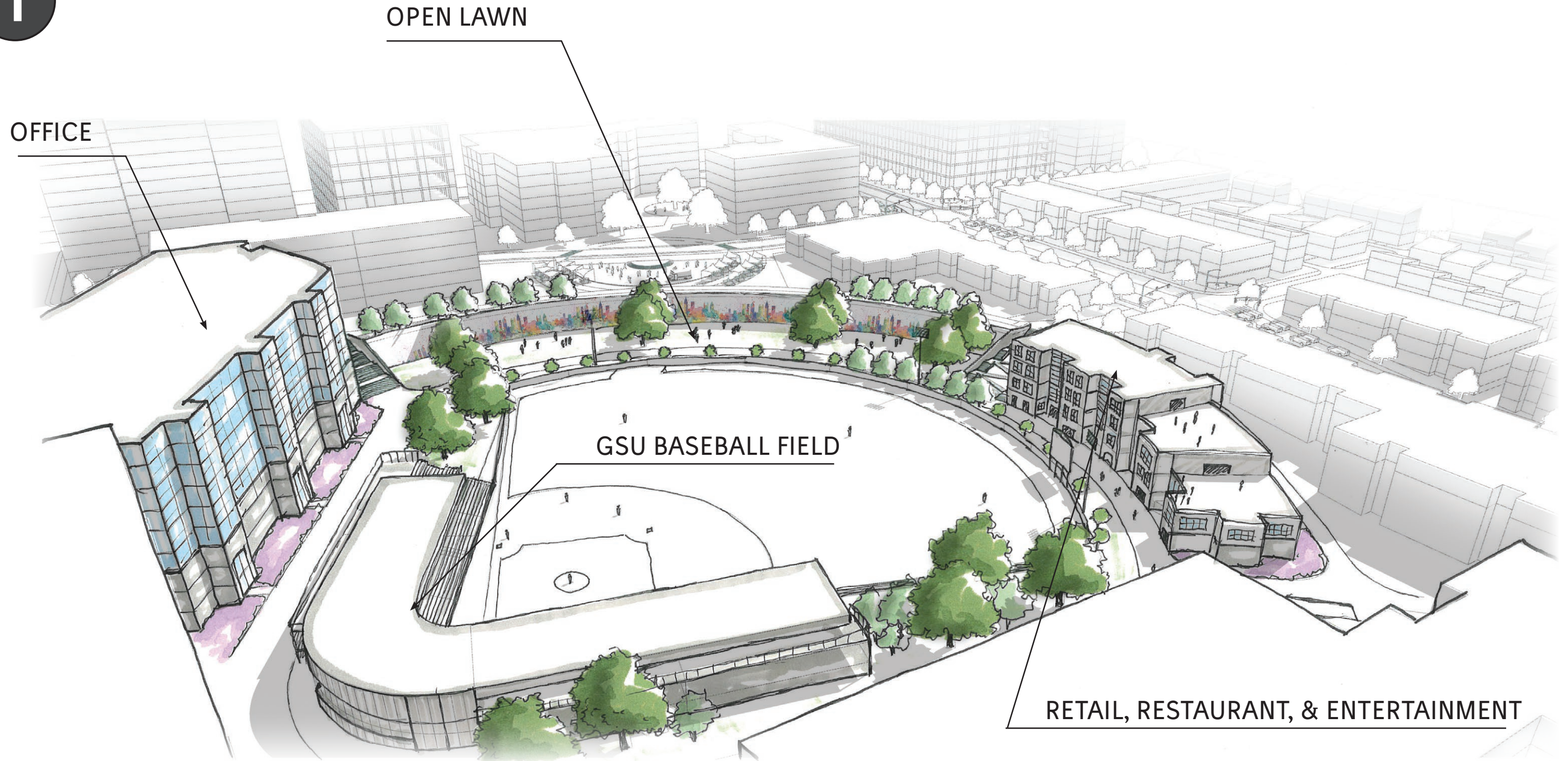


TURNER FIELD REDEVELOPMENT

DUSTIN JONES - LAND 4900 - APRIL 20, 2017 - LAHAIE



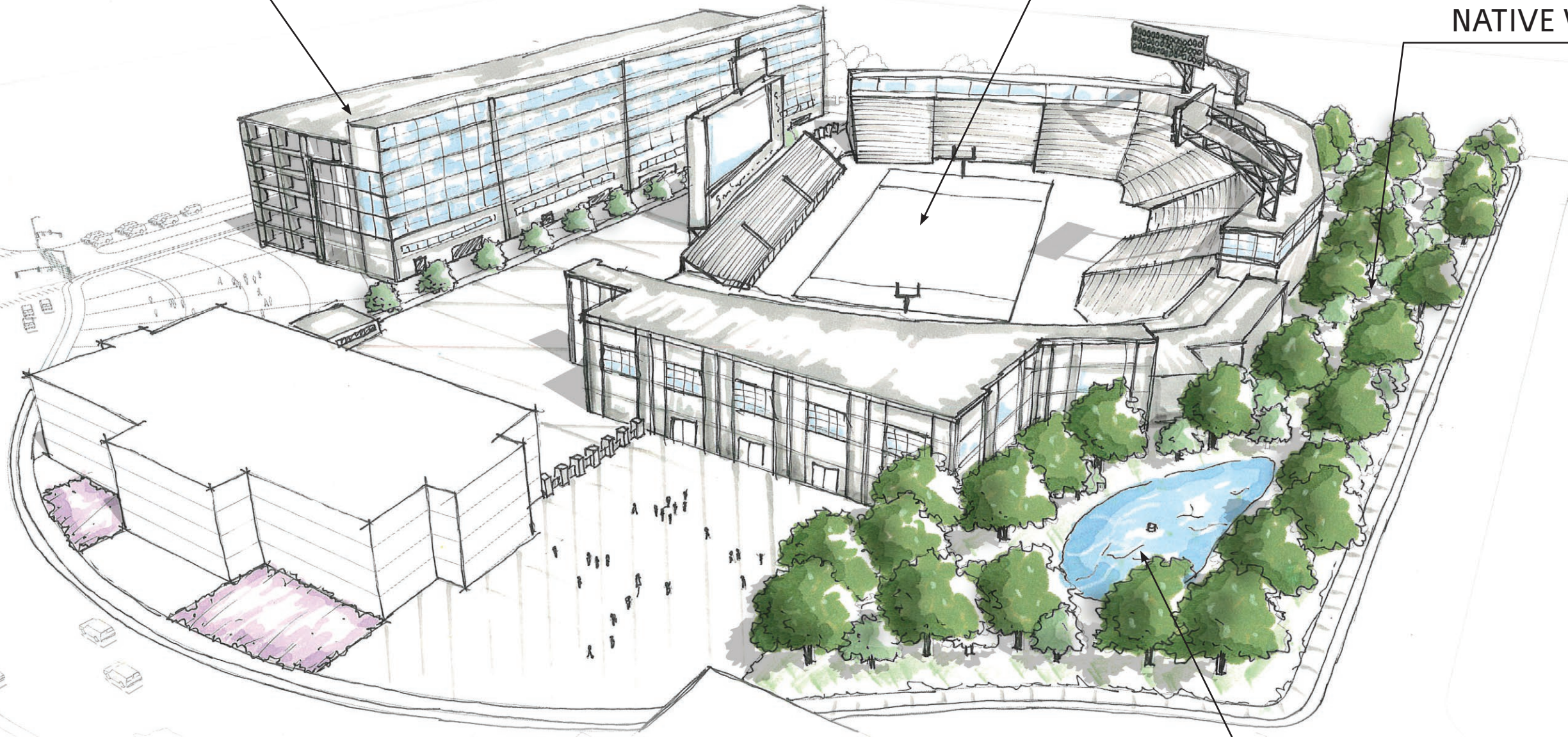
CENTRAL COMPLEX

The Central Complex contains the majority of the public park space on site. Centered around the Georgia State baseball field, this area contains an adjacent open lawn along the old Fulton County Stadium wall. The wall will contain a massive mural done by an array of local artists. This space is directly accessible to the retail district and includes an overlook walk along the backside.

PARKING & OFFICE

GSU FOOTBALL STADIUM

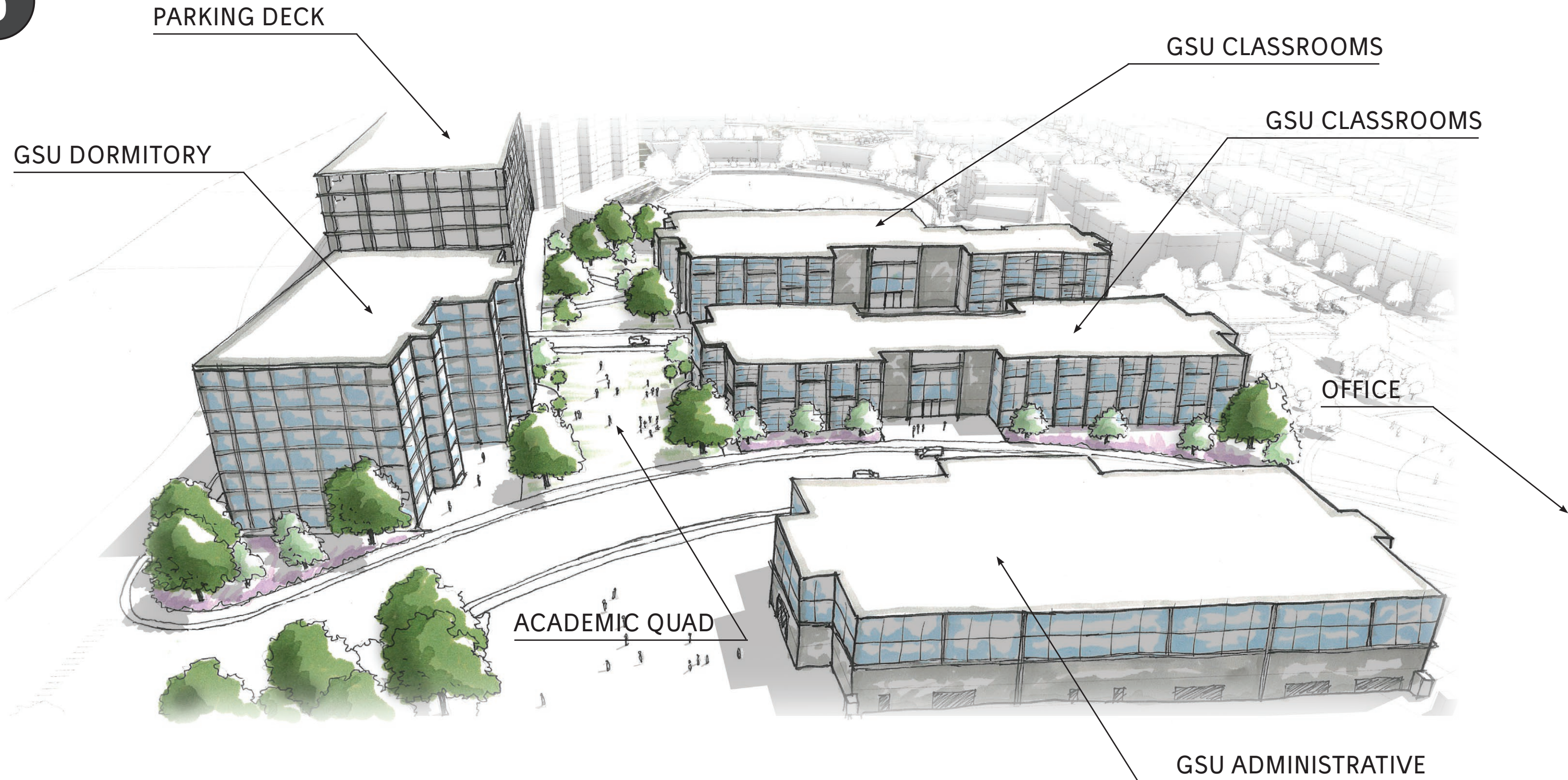
NATIVE WOODLAND



FOOTBALL COMPLEX

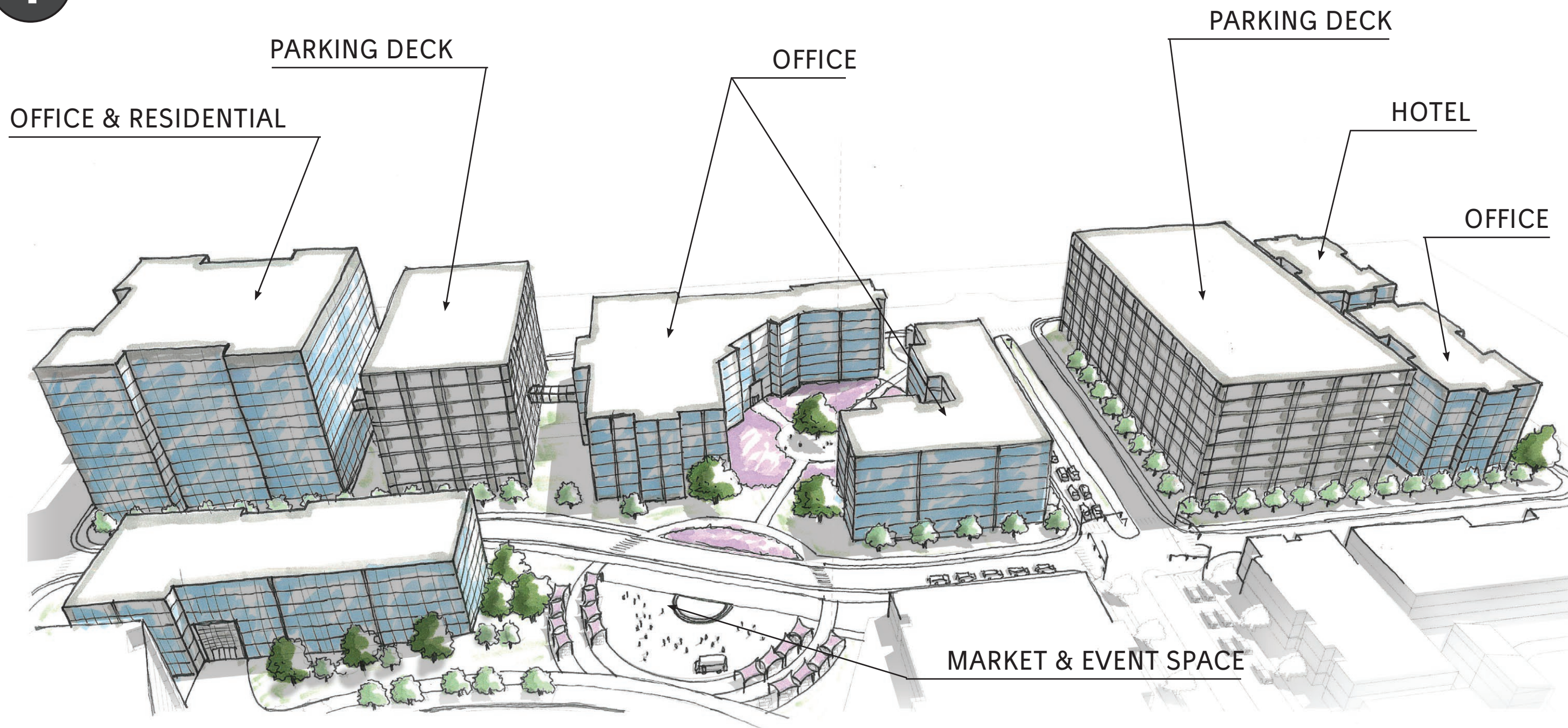
The GSU stadium will entail a large reduction in building size. This newly available space will be devoted to wild life restoration, and storm-water management. A parking deck faced with office buildings sits on the opposite edge.

STORM-WATER MANAGEMENT



GSU CAMPUS

The Georgia State academic facilities create a large linear green space to be enjoyed by students and faculty. The goal is to bring a sense of a “traditional campus” to this urban setting.



OFFICE PARK

The Office Park consists mostly of office space with the top floors devoted to apartments. This area is connected to the central complex through the market plaza. The plaza contains a stage platform, along with shaded stalls for market functions.

TOWN HOMES

GROCERY STORE

RESIDENTIAL COMMUNITY

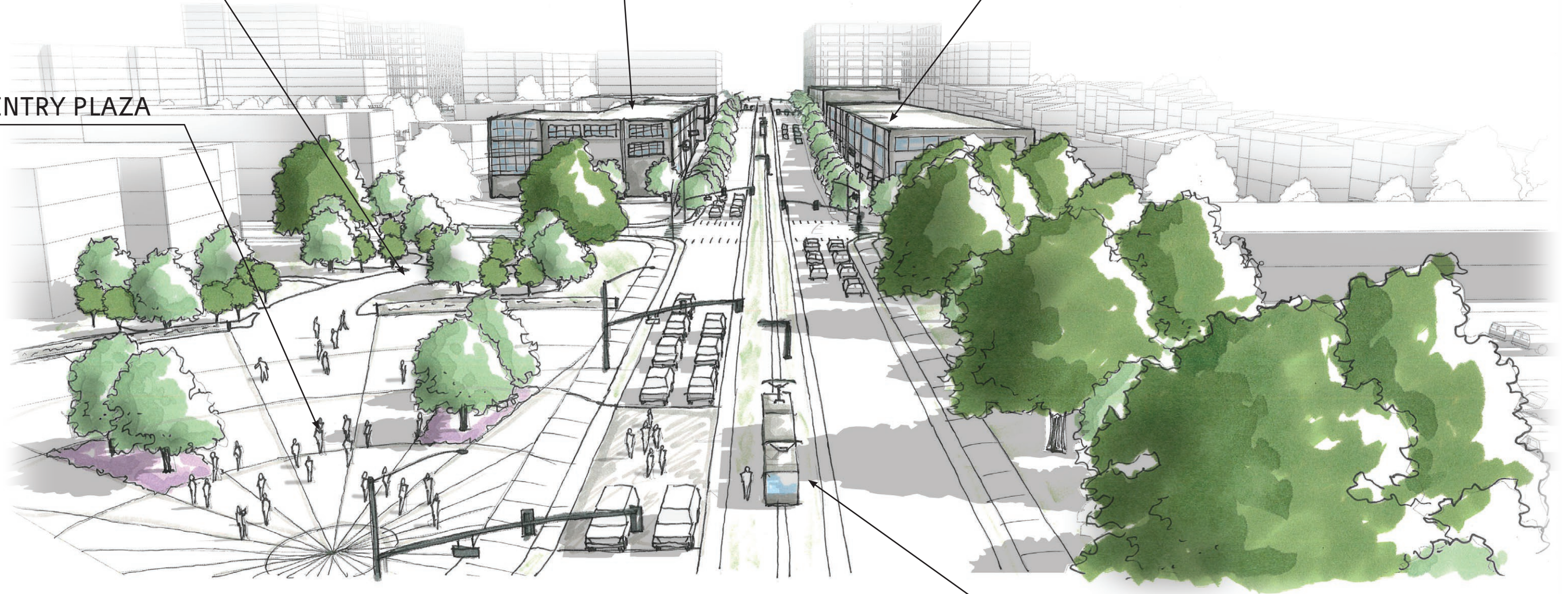
The Residential Community contains two sizes of town-homes that share a series of green spaces. A grocery store sits just to the south.



HISTORIC WALK

ENTRY PLAZA

RETAIL, RESTAURANT, & ENTERTAINMENT



RETAIL DISTRICT

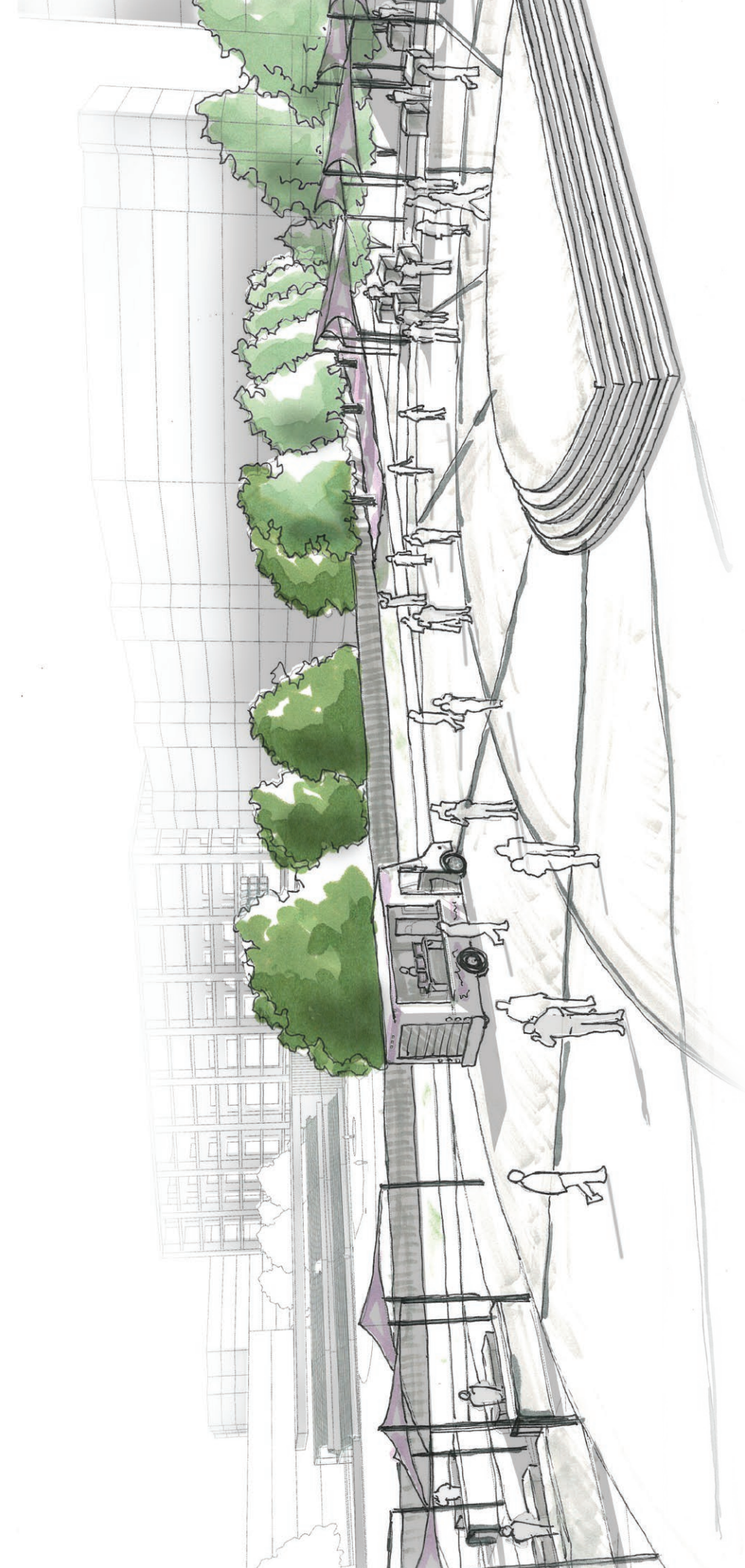
The Retail District contains the main entrance plaza and street car stop. From this stop visitors must pass through the historic walk, and browse interpretive pieces on the rich history of the area. Past that sits and array of shops lining Hank Aaron Drive.

STREETCAR STOP



CENTRAL COMPLEX

SITE PLAN



MARKET PLAZA



ADA ACCESS

