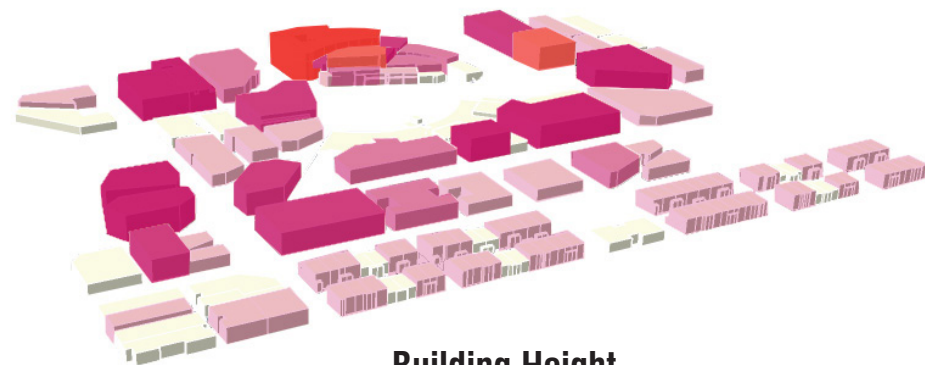


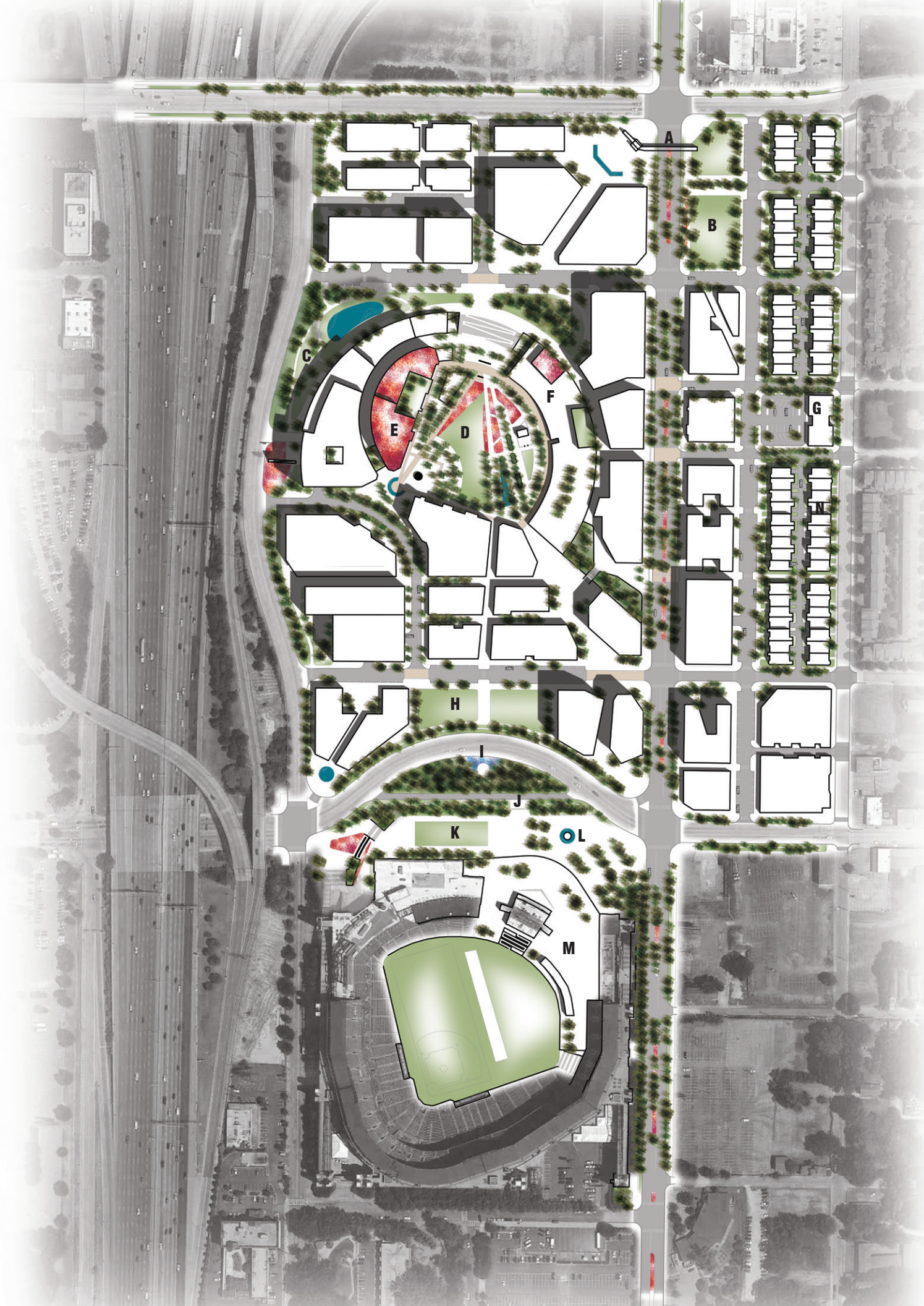
TURNER FIELD SITE MASTERPLAN

The main ideas that bring the whole site together are that of inclusivity, communication, and ultimately, uniting all of the communities this site reaches. The history of sport and unity of a world gathering happening right in this location directly affect the orientation of the architecture and spaces created. The site is intended to be an atmosphere conducive to celebrating GSU sport, the community, and all those who visit. A vision of parades, free speech, and general togetherness was kept at the forefront of all design decisions.



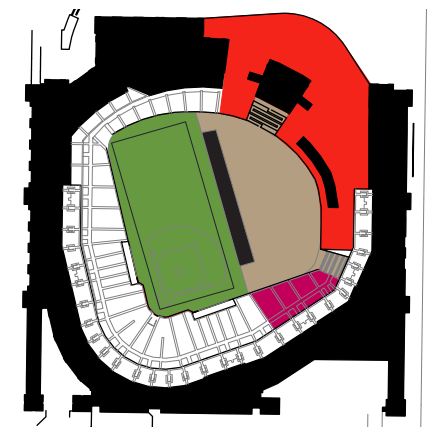
Building Height

The scale of this development will be imperative to how it will transform the area. By keeping the building heights anywhere from 3-8 stories, the area will adopt a small downtown feel, something to that of Athens.



Turner Field Site Masterplan 300 scale

- A. OLYMPIC BRIDGE
- B. FIVE RINGS PARK
- C. DOG PARK
- D. FULTON STADIUM PARK
- E. ROOFTOP GARDENS
- F. ROOFTOP ACCESS
- G. MEDIUM-SIZE GROCERY
- H. TAILGATING GREEN
- I. GSU MONUMENT
- J. PUBLIC TRANSPORTATION LANE/ STOP
- K. TRANSPORTATION PLAZA
- L. GSU FOUNTAIN
- M. DUAL FOOTBALL-BASEBALL STADIUM
- N. 58 TOWNHOUSES



Turner Field Redevelopment

- football field configuration
- removable visitors' stands
- accessible plaza for football game use
- cleared, open space plaza
- stands unused during football game