



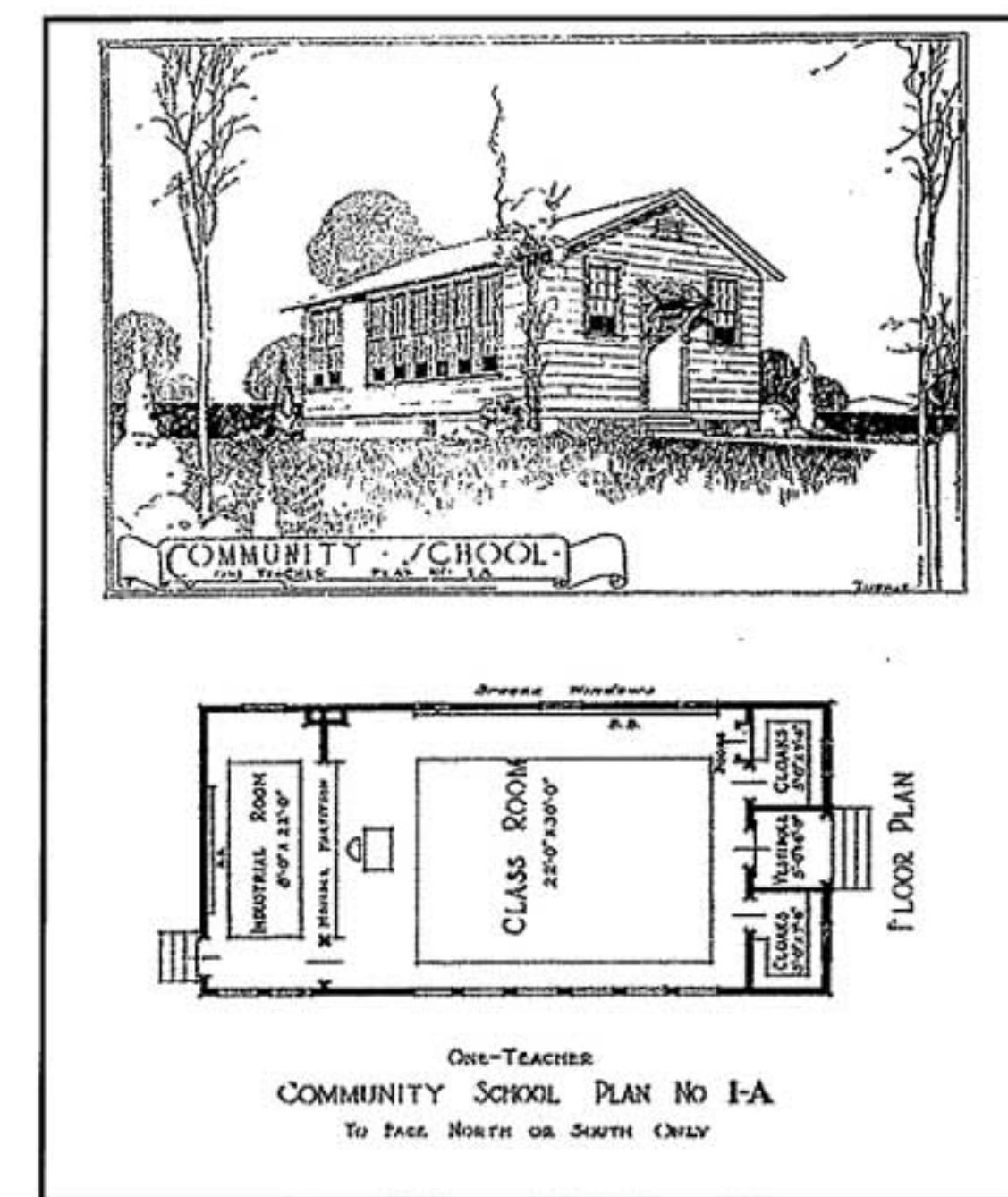
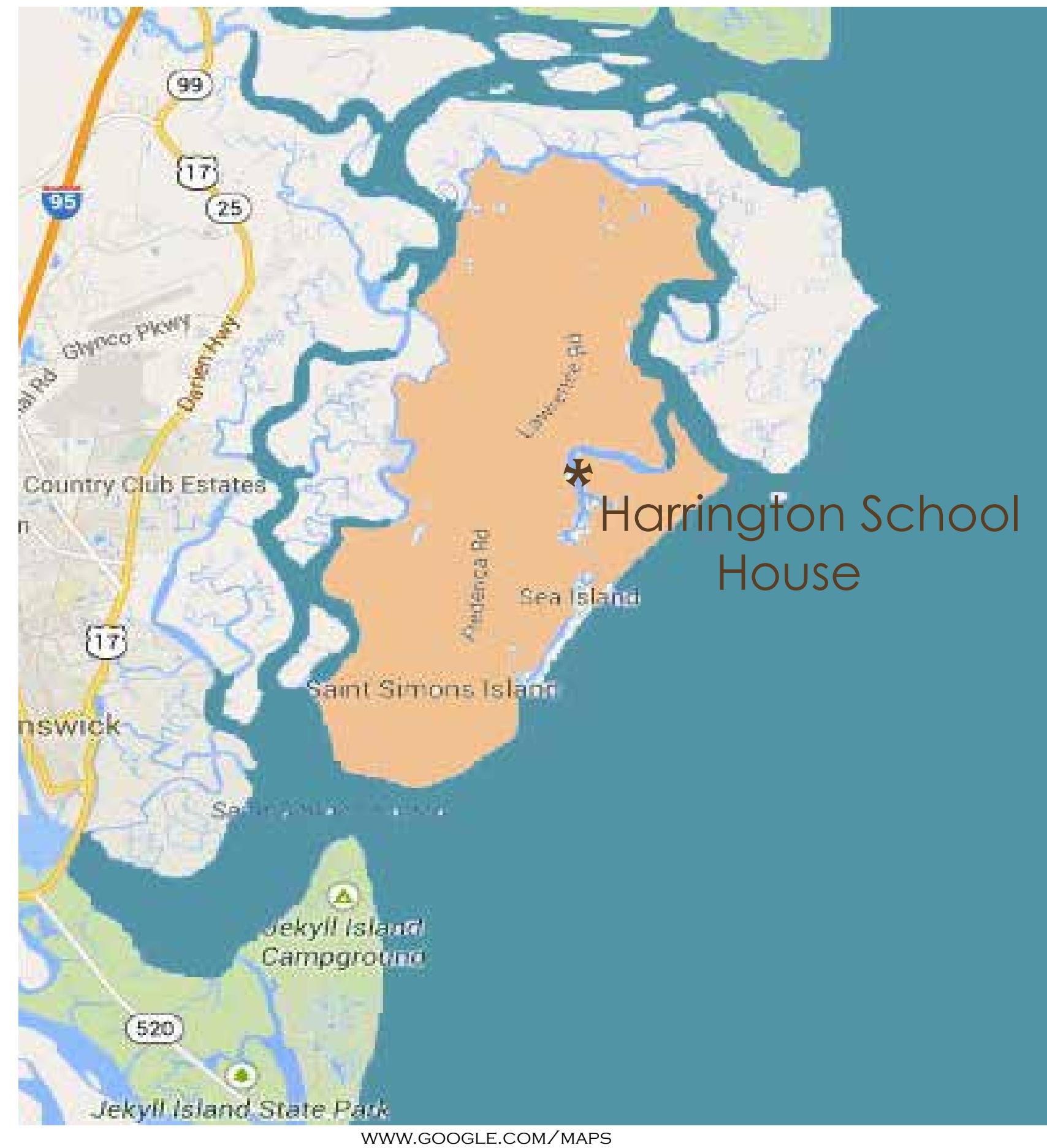
HARRINGTON SCHOOL HOUSE RESTORATION- JOHN BEAL- PROFESSOR ASHLEY STEFFENS SPRING 2014



Located on Georgia's Atlantic Coast, St. Simons island is about an hour south of Savannah and an hour north of Jacksonville, Florida. The St. Simons African American Heritage Coalition (SSAAHC) has taken a strong interest in restoring and revitalizing the historic Harrington School House, an iconic feature to the African American culture on the island.

According to the SSAAHC, the school house was built in the 1920s and served as the main educational structure for three African American communities on the island until 1960 when desegregation allowed the students to attend St. Simons Elementary. Over the years, the community gathered here for private and public gatherings, including family reunions and school proms. In the 1990s, pressure by developers caused many African American homes and property in Harrington to be sold for subdivisions. Residents who did not want to sell their heritage put up yellow "Don't Ask/Won't Sell" signs in their yards. Residents chose to donate their portion of land to the St. Simons Land Trust so that the Schoolhouse and 12 surrounding acres of "sun-dappled forests and ponds" could be preserved and saved from destruction.

<http://www.ssiheritagecoalition.org/>



[HTTP://WWW.SSIHERITAGECOALITION.ORG/](http://www.ssiheritagecoalition.org/)



The Mission of the St. Simons African American Heritage Coalition is "to educate, preserve, and revitalize African American heritage and culture" with three very clear goals of land loss prevention, historic preservation, and economic development. The task at hand is to create a functional 12 acre area available to the public with those goals in mind.

[HTTP://WWW.SSIHERITAGECOALITION.ORG/](http://www.ssiheritagecoalition.org/)



SITE HISTORY

HARRINGTON SCHOOL HOUSE RESTORATION- JOHN BEAL- PROFESSOR ASHLEY STEFFENS SPRING 2014

Restoration of the building itself has begun already with plans and funding to return the building to its original glory. With twelve acres of surrounding property, there is a need to add a park area for members of the community as well as visitors of the historic building to enjoy.

With limited funding available, a low maintenance design is preferred to help with longevity of the park's life. The two ponds on the property provide strong focal points and areas of interest, while the dense canopy of the forested area acts as relief from the harsh summer sun. Surrounding future development around the park must also be considered.

After meeting with the members of the SSAAHC and interested residents of the island, a few design deliverables were hammered out. Additional ideas were brought to the table for consideration if funds permit them.

Must Haves:

- ADA Accessibility for disabled visitors
- On street parking
- Restroom facilities



[HTTP://STATIC.SETON.COM/](http://static.seton.com/)



[HTTP://WWW.PAVERSEARCH.COM/](http://www.paversearch.com/)



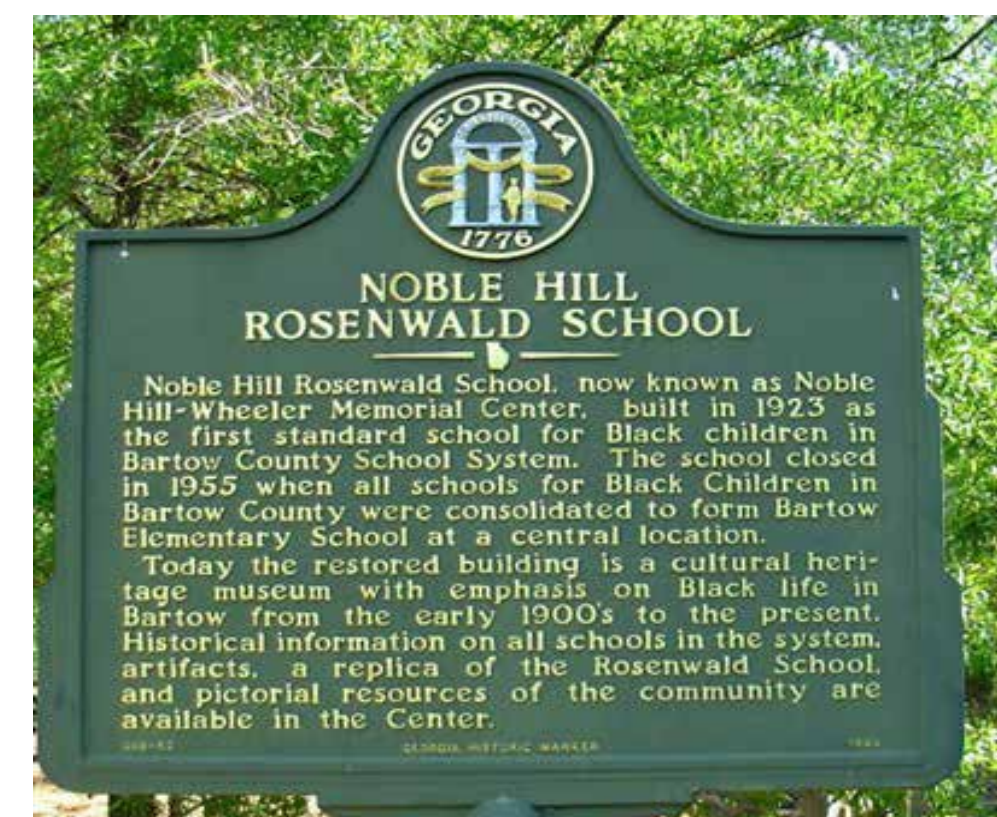
[HTTP://WWW.ROMTEC.COM/](http://www.romtec.com/)

Additional Considerations:

- Access from surrounding residential communities
- Connection with surrounding historical Gullah Geechee Corridor
- Covered outdoor gathering and event space
 - Historical markers
 - Night time/public safety
- Open recreational space
 - Outdoor seating
 - Pedestrian paths
 - Playground
- Potential for economic return
- Rosenwald School Recognition
 - Secluded private area



[HTTP://CLEVELANDLIGHTING.OUTDOORLIGHTSBLOGS.COM](http://clevelandlighting.outdoorlightsblogs.com)



[HTTP://WWW.WAYMARKING.COM/](http://www.waymarking.com/)



[HTTP://WWW.SPALDINGPARKSANDREC.COM/](http://www.spaldingparksandrec.com/)



[HTTP://ORPHEOGROUP.COM/](http://orpheogroup.com/)





ABOVE: LAND USE ANALYSIS MAP

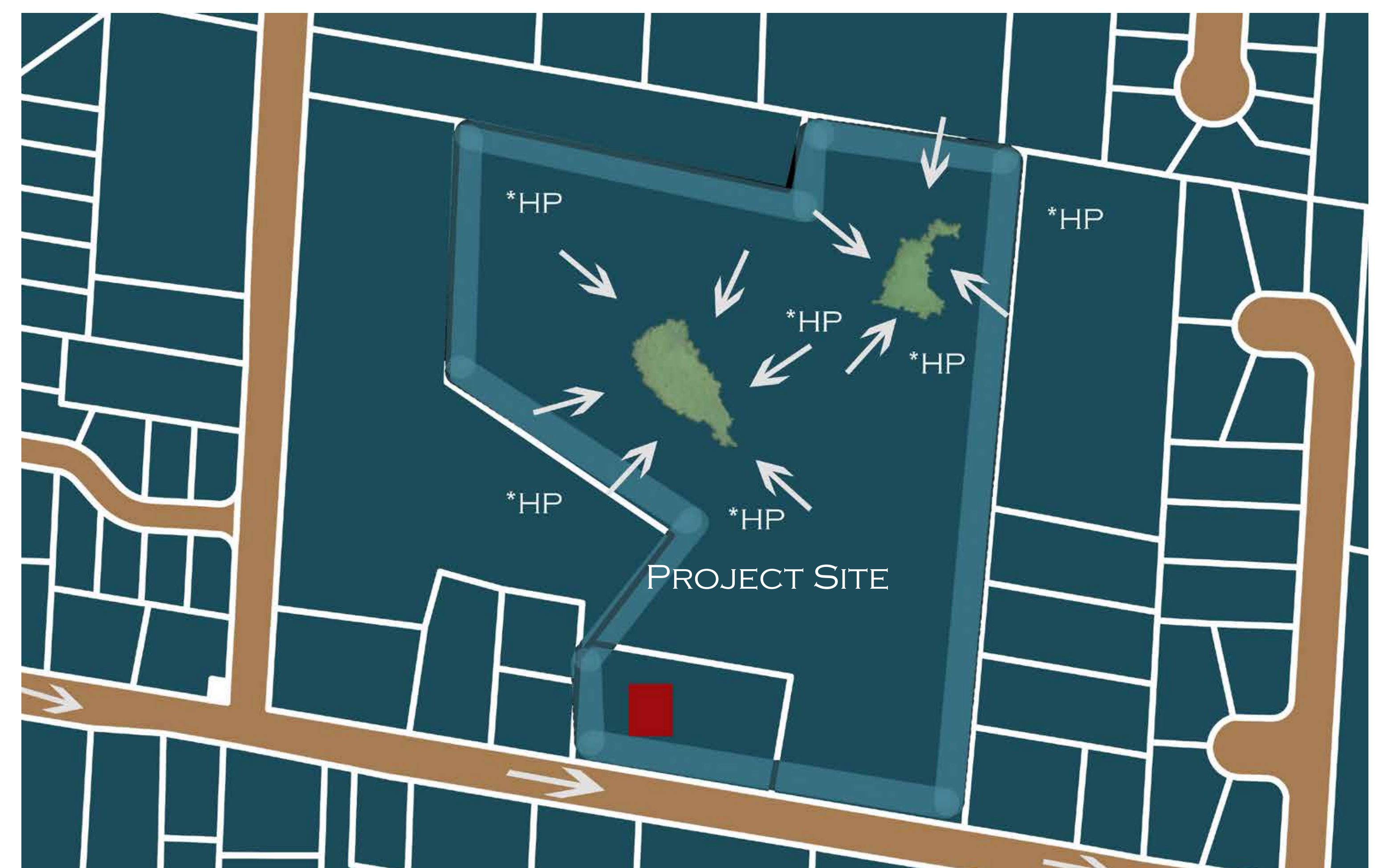
- Residential
- Developing
- Forested/Undeveloped

Development around the project site will influence the future conditions of the project site. Currently, a residential community is being developed right in the backyard of the school house, with potential for more development surrounding the site.

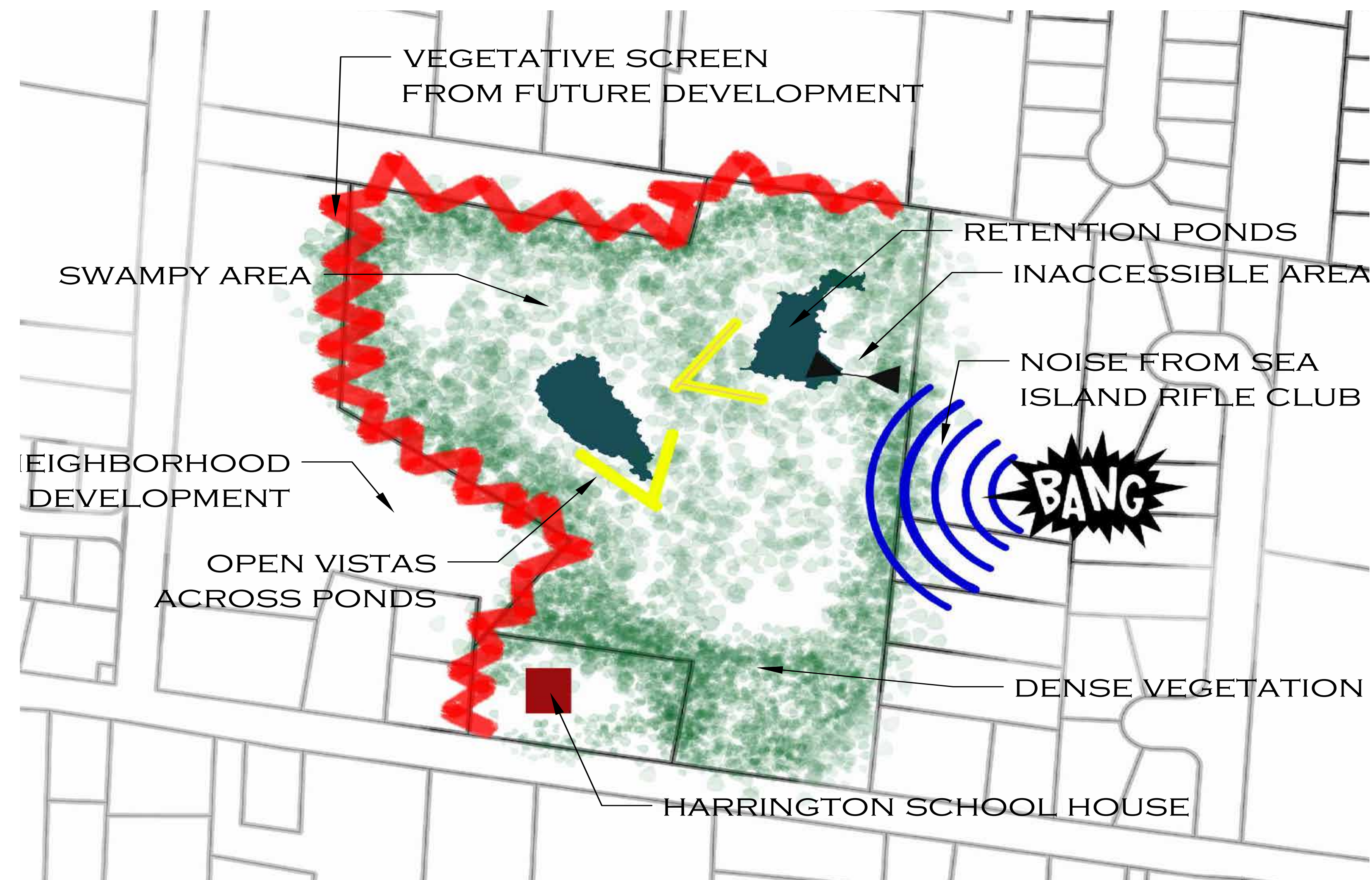
BELOW: INFILTRATION ANALYSIS MAP

- Infiltration
- Runoff

St. Simons receives abundant rainfall, almost year round. With goals of land-loss prevention and minimal environment impact, retaining the amount of pervious area is necessary to make sure the site continues to drain and runoff properly, and allows precipitation to infiltrate naturally.

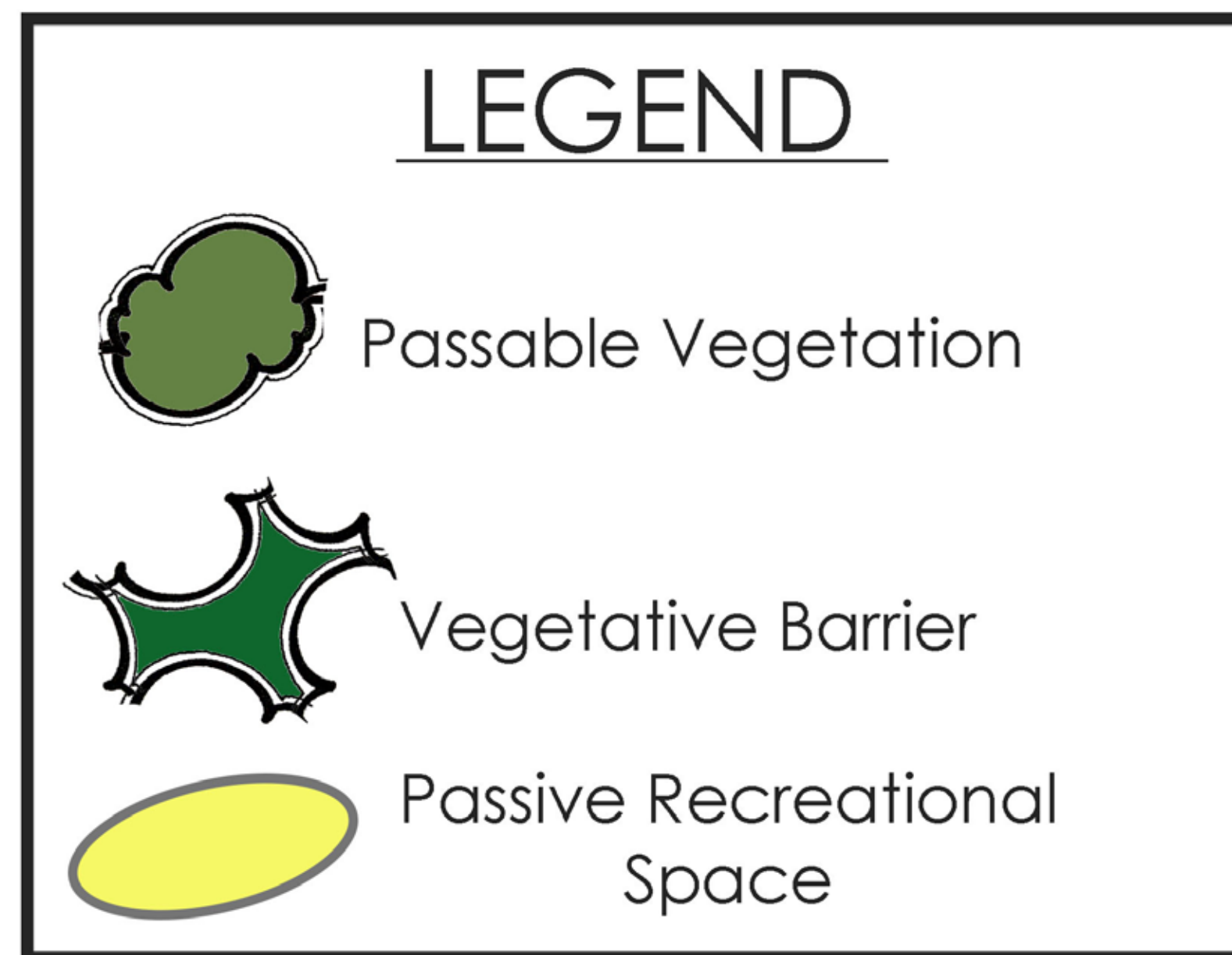


Dense vegetation seems to surround the perimeter of the site, while the interior tends to be a bit more open. This is mainly due to the inundated, swampy areas between the two ponds. The relatively flat interior remains wet from pond overflow, resulting in varied vegetation. Slightly higher elevations along the southern edges of the ponds provide great vistas across the water. There is a bit of a natural vegetative screen from the developing areas adjacent to the site, however it is not completely isolating. Factors from the outside human world also infiltrate the site, including noise from vehicular traffic from the road, sounds from surrounding neighborhoods, and the occasional shotgun blast from the Sea Island Rifle Club.

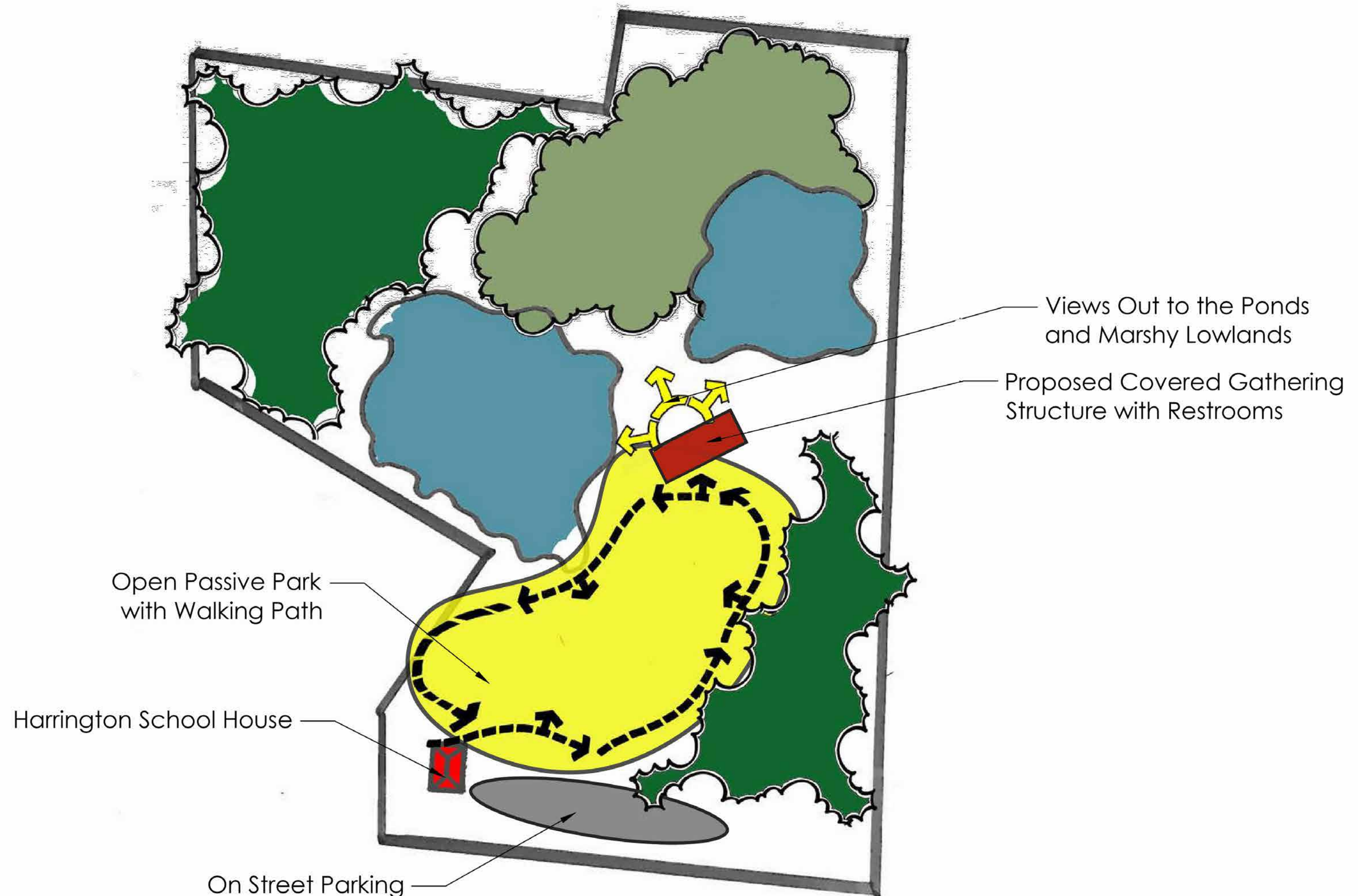


ABOVE: EXISTING CONDITIONS



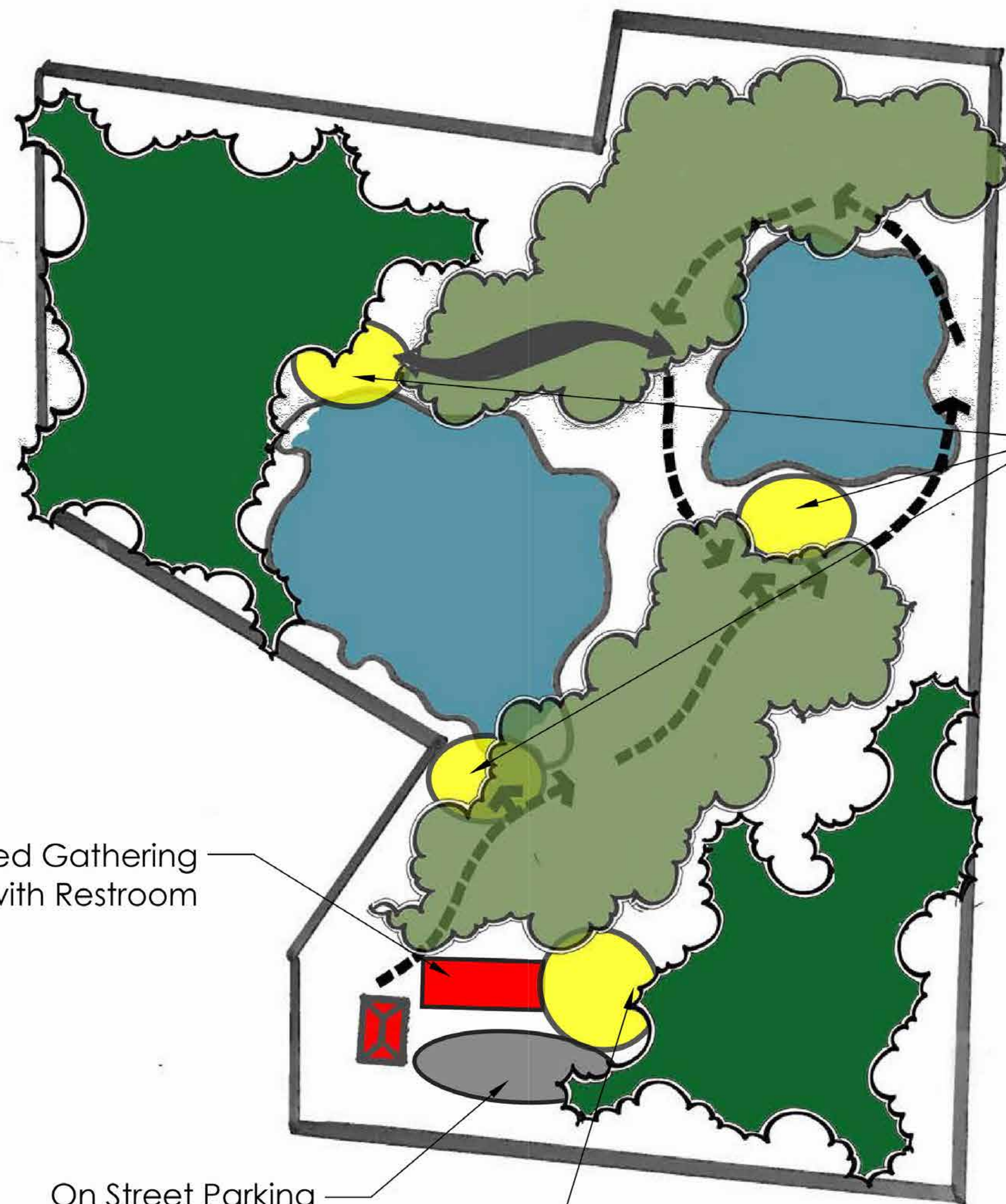


Concept One focuses on passive recreation of the site. A large park like setting is proposed behind the school house, including a walking path paved with a pervious solution. At the far end of the open space a covered outdoor gathering structure is proposed for community events and public usage, perhaps bringing in a little income for the School House. On street parking provides a way for cars to get off the road, but not parking in the overgrown brush. Silva cell pavers are a great pervious solution for a small strip of parking spots along the side of the road.



CONCEPTUAL DIAGRAMS

HARRINGTON SCHOOL HOUSE RESTORATION- JOHN BEAL- PROFESSOR ASHLEY STEFFENS SPRING 2014



Proposed Covered Gathering Area with Restroom

On Street Parking

Harrington School House Memorial Garden

Potential for Birding/Wildlife Observation

LEGEND



Passable Vegetation



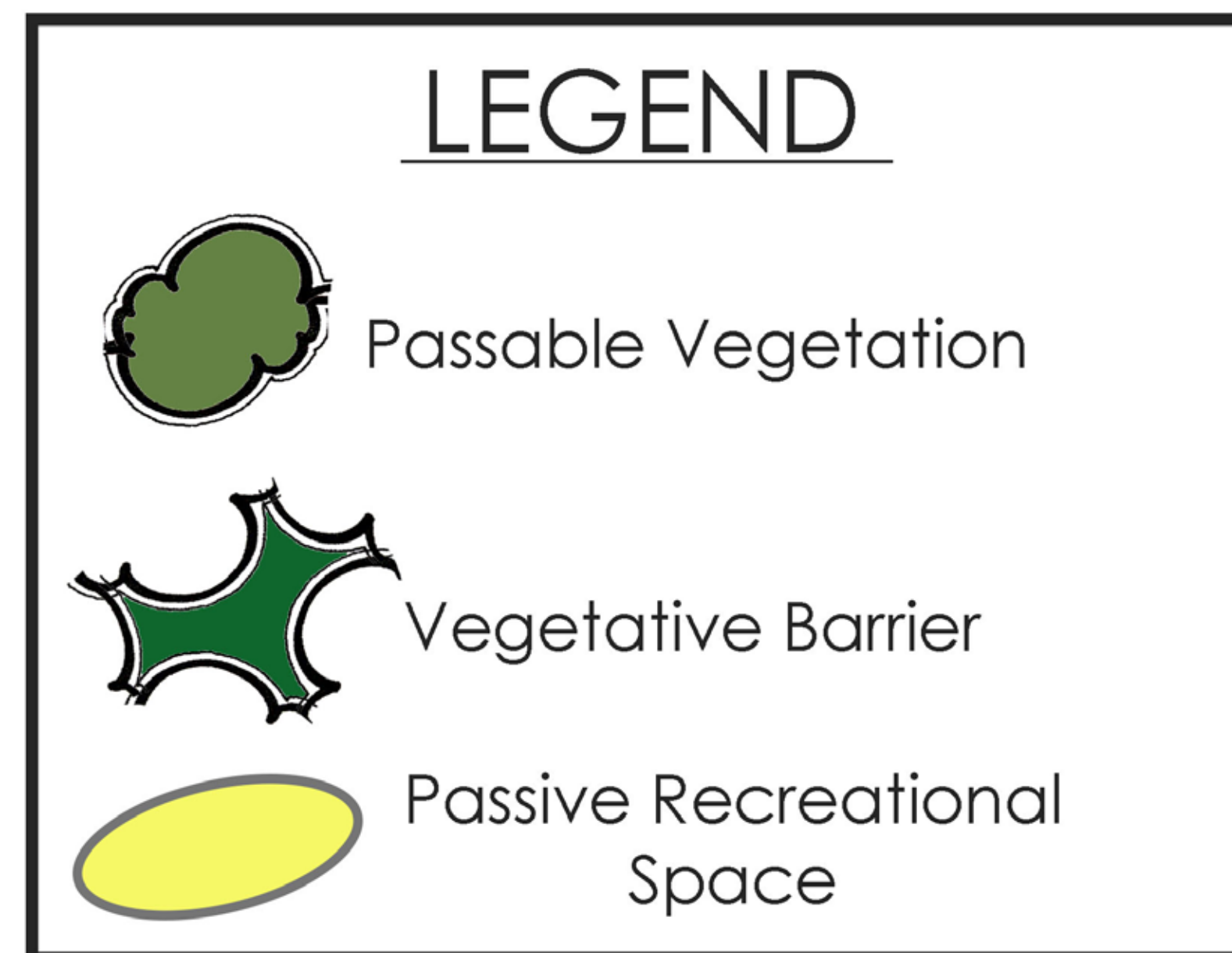
Vegetative Barrier



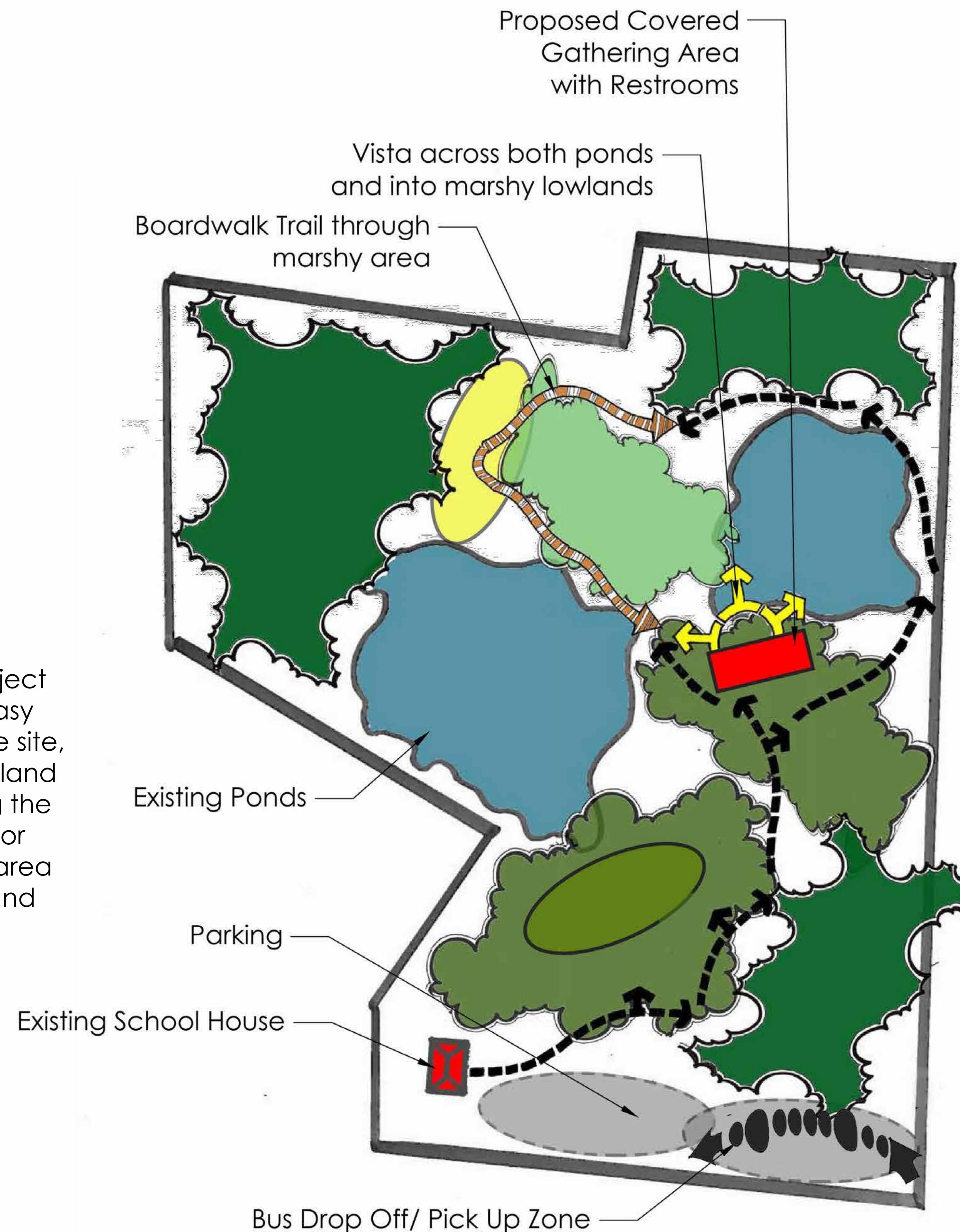
Passive Recreational Space

The focus of **Concept Two** is to provide opportunities for private settings throughout the site, while still maintaining a public feel. The proposed structure with restroom facilities is located closer to the School House, with adjacent parking and a private memorial garden, remembering the history of the Harrington School House. A meandering path travels through the site and around the smaller pond, with potentials for stopping and observing the surrounding nature, perhaps with birding stands or covered bench areas for resting. A more natural, less maintained path could branch off towards the larger pond providing a private setting for passive usage, such as a small pond side gazebo.



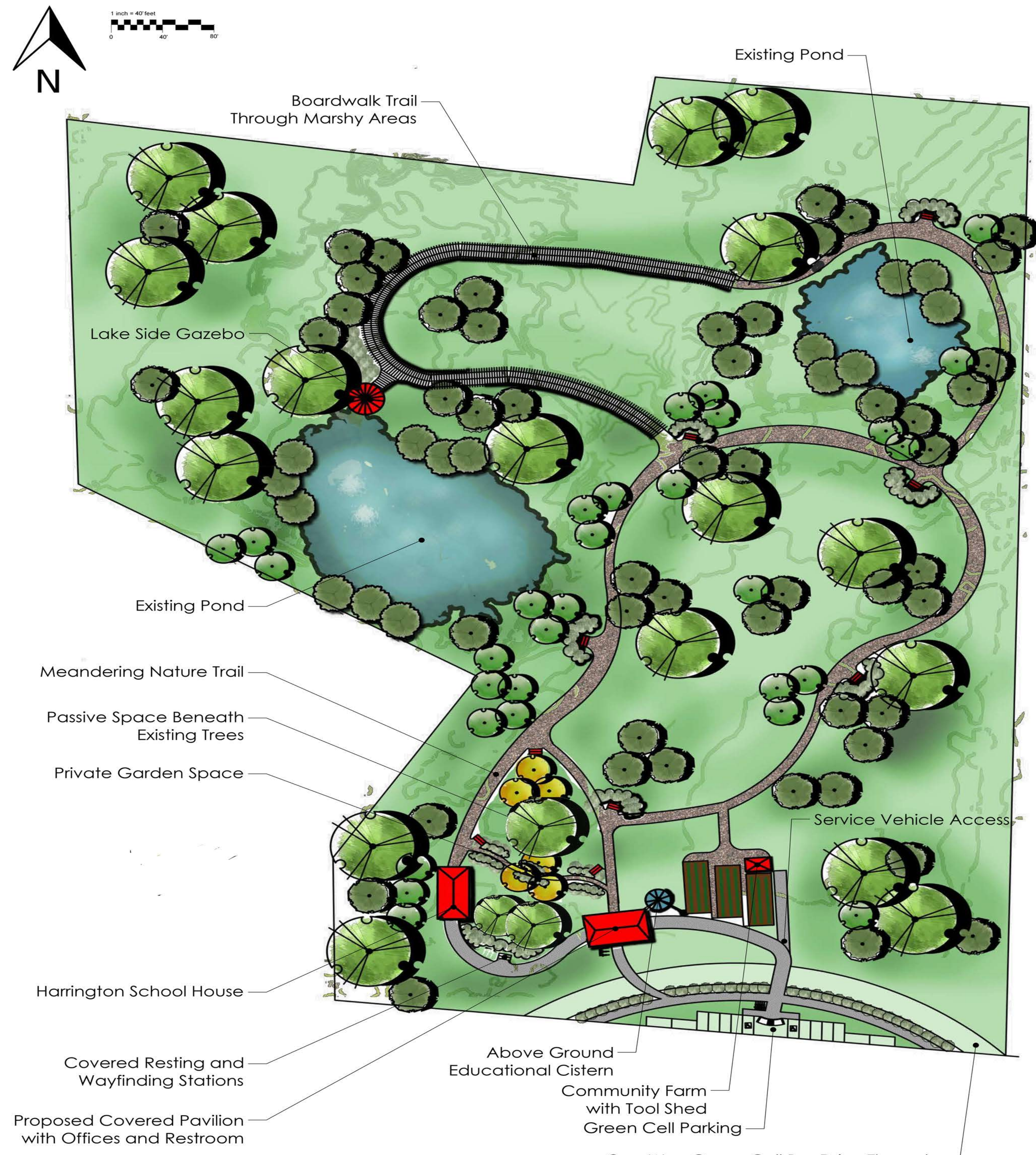


Concept Three utilizes the full twelve acres of the project site. On street parking and a bus drop off provides easy access to the park. A long, maintained trail explores the site, switching to a boardwalk style down in the marshy lowland areas. Places for passive recreation are located along the path near the larger pond providing great scenery for picnicking or relaxing outdoors. A covered gathering area with restrooms and electricity allows for community and private functions.



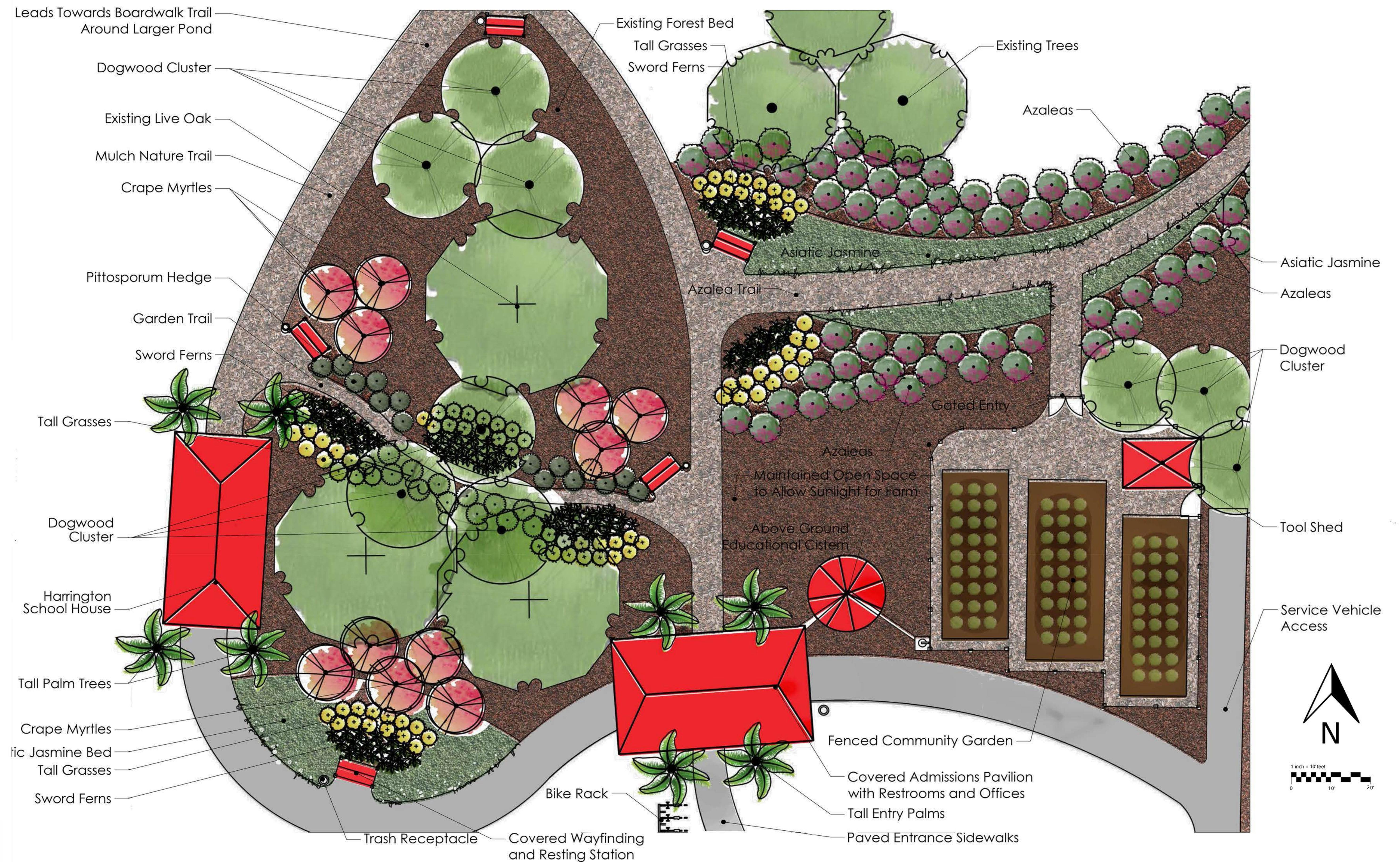
CONCEPTUAL DIAGRAMS

HARRINGTON SCHOOL HOUSE RESTORATION- JOHN BEAL- PROFESSOR ASHLEY STEFFENS SPRING 2014



Located on Georgia's Atlantic Coast, St. Simons Island is about an hour south of Savannah and an hour north of Jacksonville, Florida. The St. Simons African American Heritage Coalition (SSAAHC) has taken a strong interest in restoring and revitalizing the historic Harrington School House, an iconic feature to the African American culture on the island. With limited funding available, a low maintenance design is preferred to help with longevity of the park's life. The two ponds on the property provide strong focal points and areas of interest, while the dense canopy of the forested area acts as relief from the harsh summer sun. Surrounding future development around the park must also be considered.





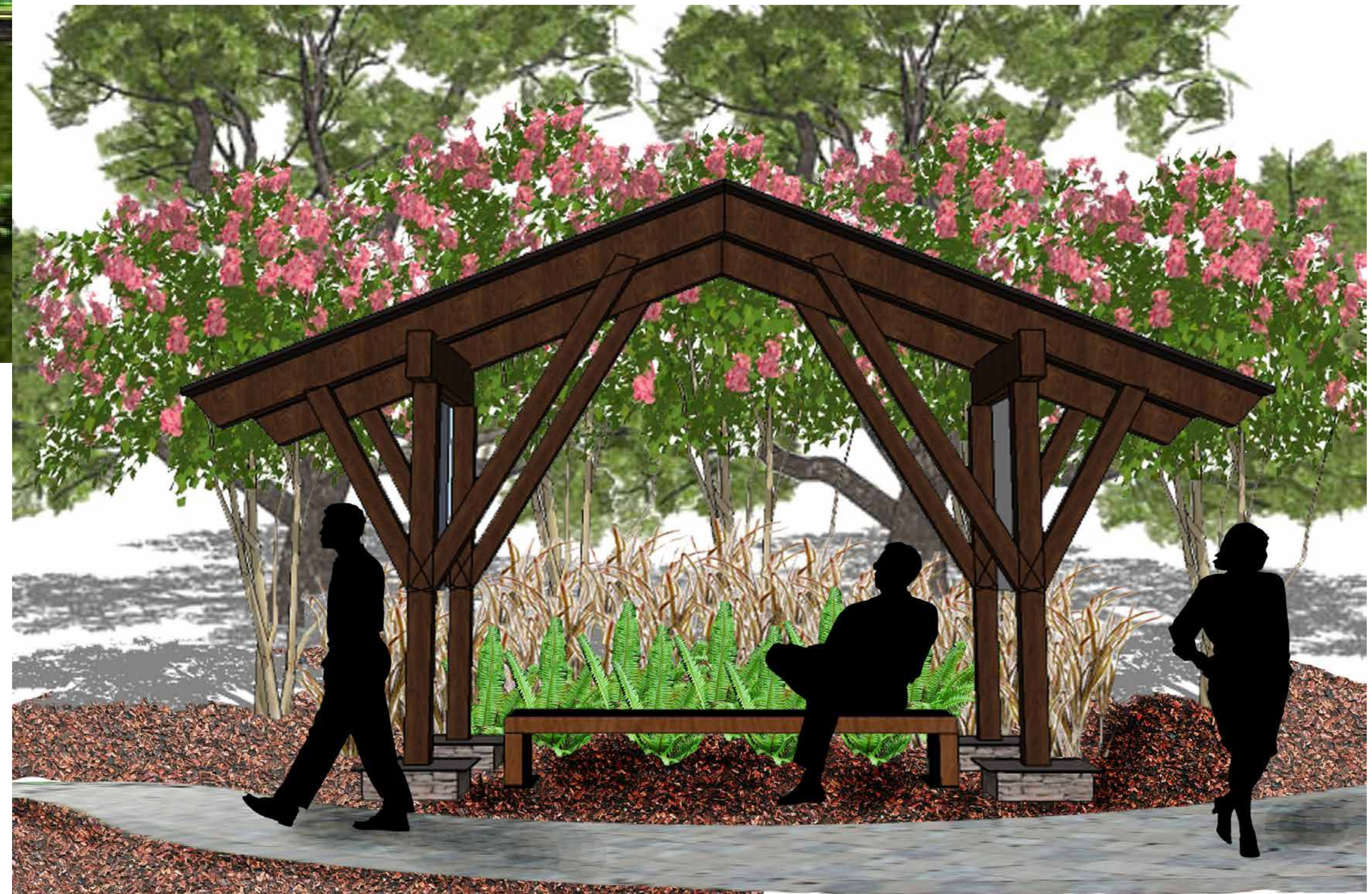
SITE PLAN

HARRINGTON SCHOOL HOUSE RESTORATION- JOHN BEAL- PROFESSOR ASHLEY STEFFENS SPRING 2014



Harrington School House

Covered Resting and Wayfinding Station



PERSPECTIVE

HARRINGTON SCHOOL HOUSE RESTORATION- JOHN BEAL- PROFESSOR ASHLEY STEFFENS SPRING 2014

Private Garden Trail



Azalea Walk Trail



PERSPECTIVES

HARRINGTON SCHOOL HOUSE RESTORATION- JOHN BEAL- PROFESSOR ASHLEY STEFFENS SPRING 2014

Plant Palette



Azaleas:

Vibrant Spring and Summer Flowers

Evergreen

Native Shrub



Crape Myrtles:

Multi Trunked

Strong Arching Form

Colorful Spring Blooms



Queen Palm:

Vernacular Appeal

Island Native



Northern Sea Oats:

Farm Inspired

Light Texture



Pittosporum:

Variegated Foliage

Evergreen Shrub



Sword Ferns:

Vibrant Green Foliage

Shade Tolerant



Asiatic Jasmine:

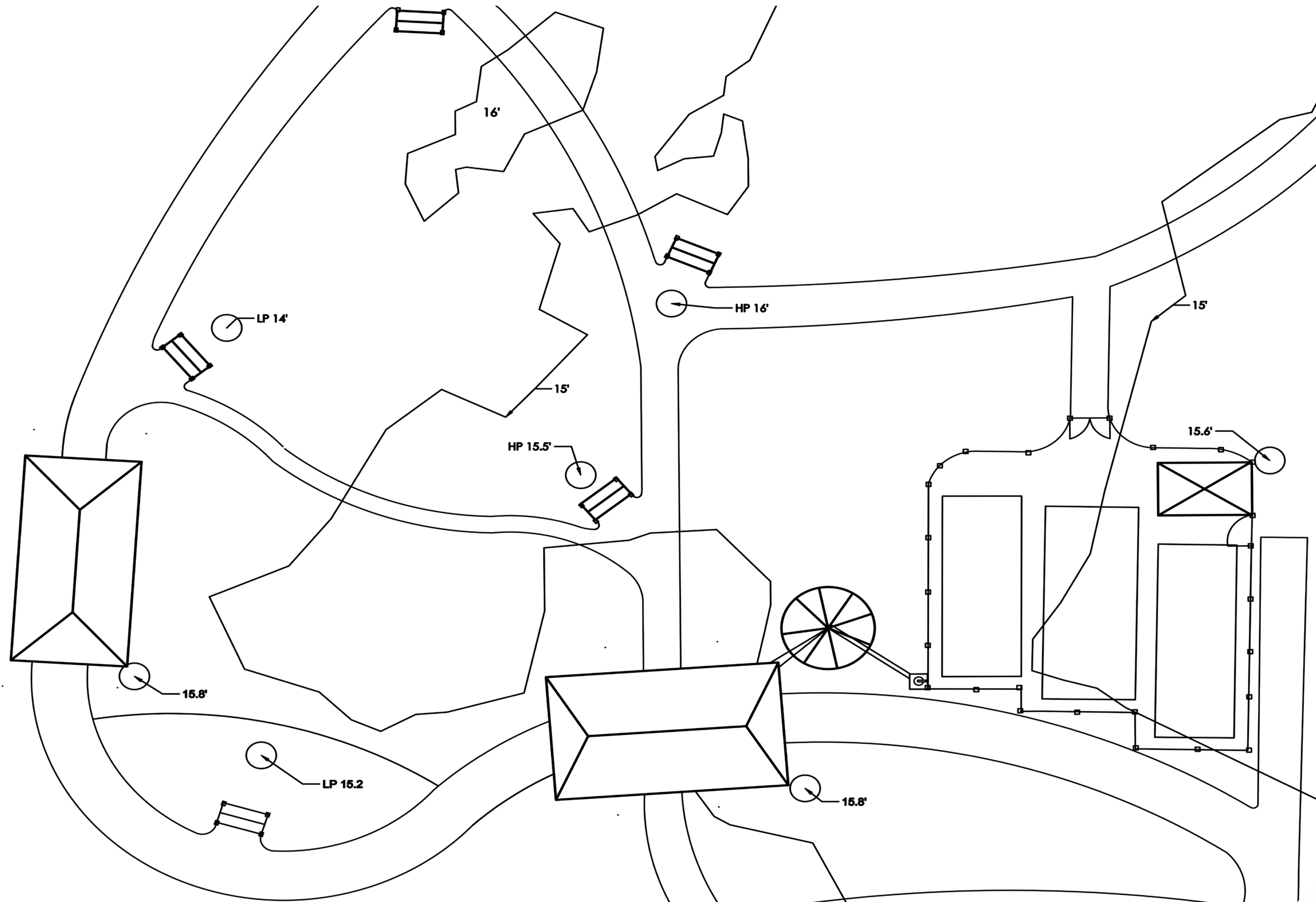
Evergreen Ground-cover

White Blooms

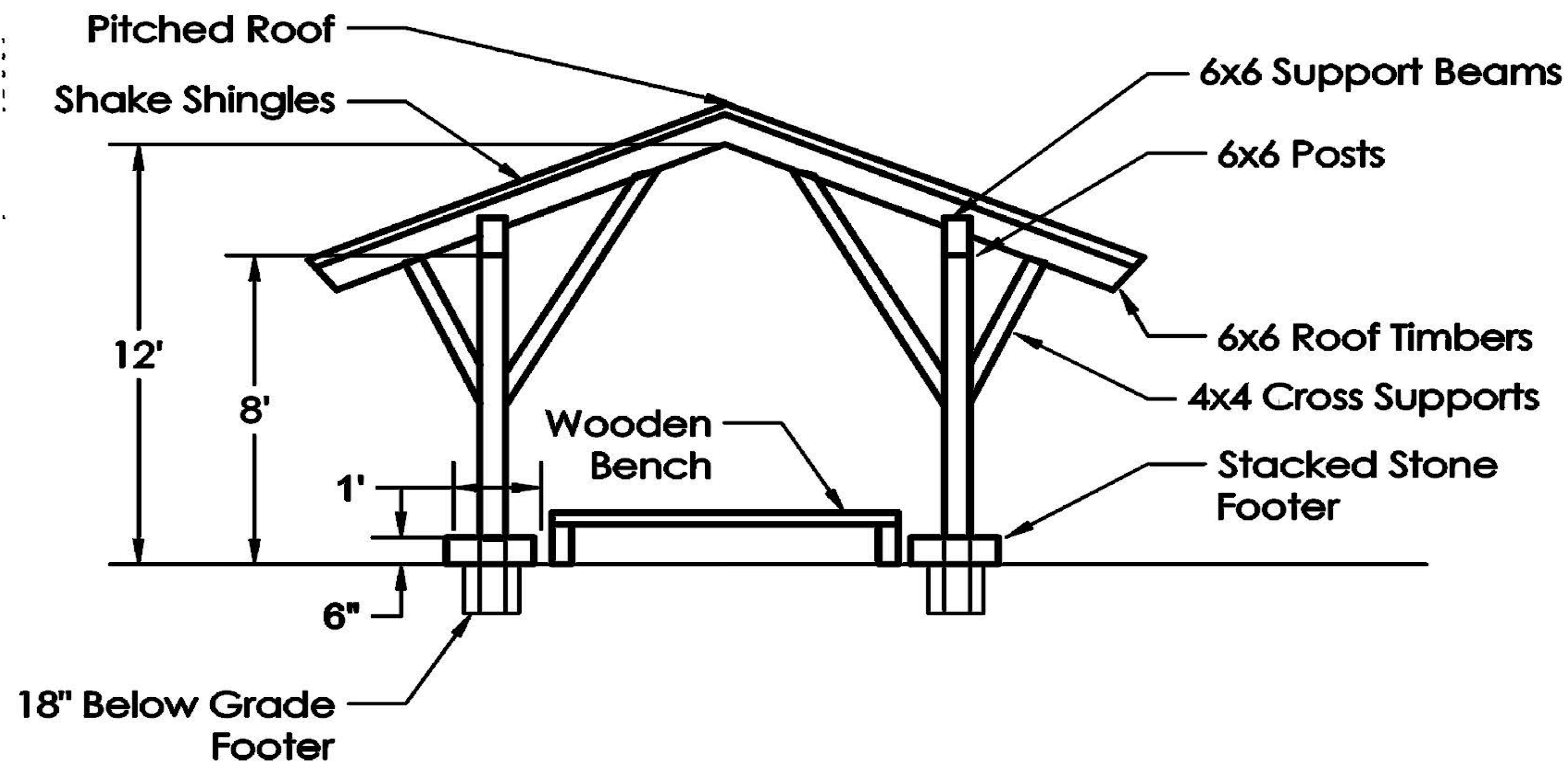


PLANT PALETTE

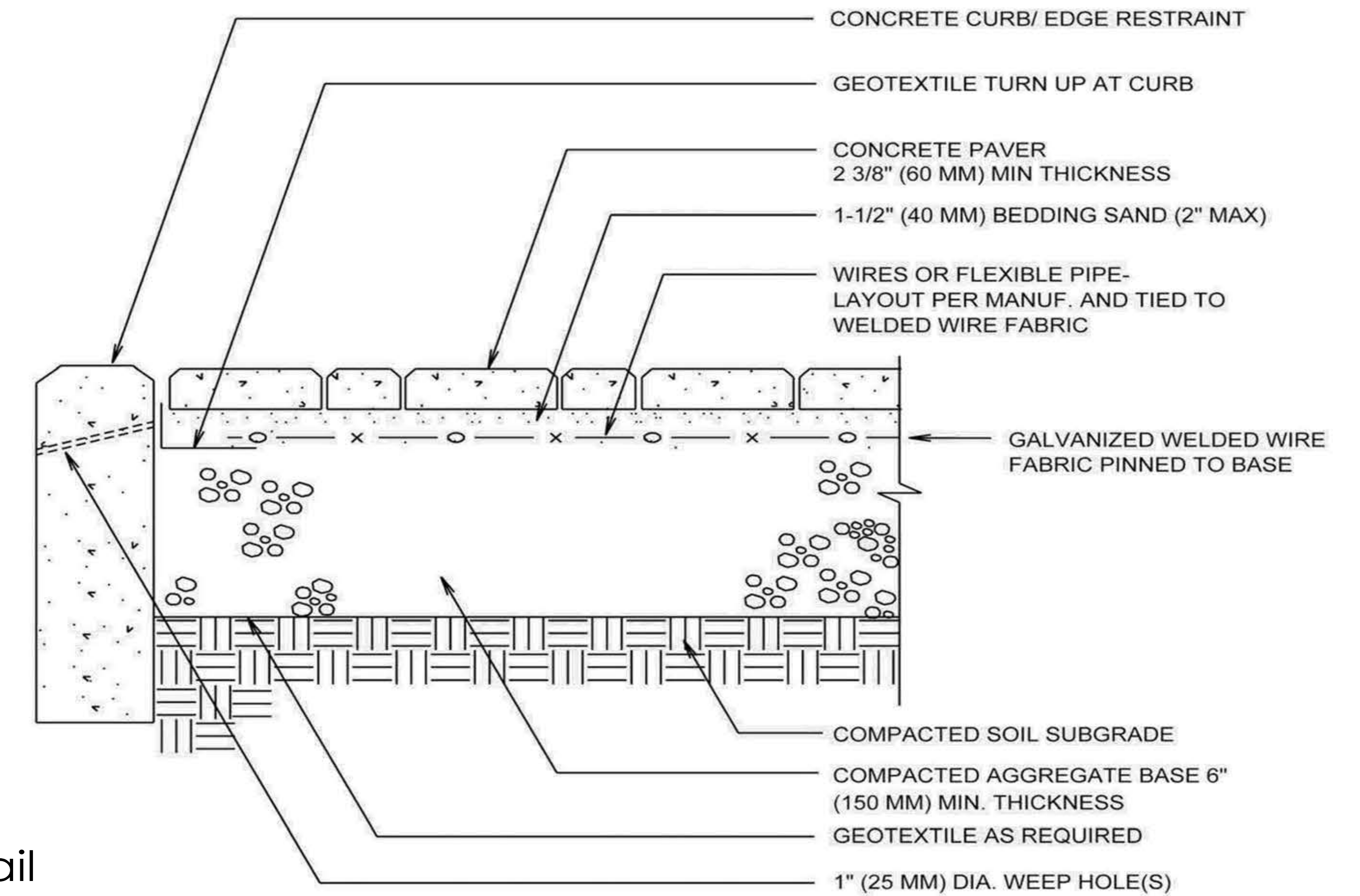
HARRINGTON SCHOOL HOUSE RESTORATION- JOHN BEAL- PROFESSOR ASHLEY STEFFENS SPRING 2014



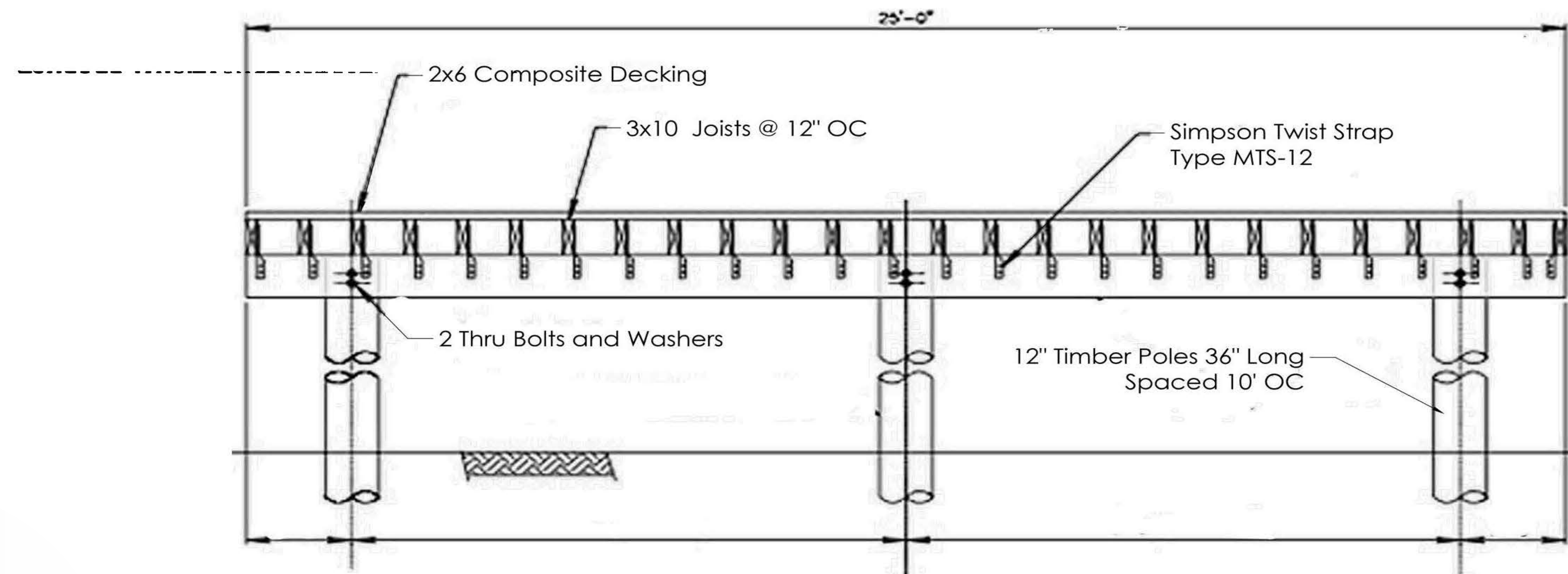
Covered Wooden Resting Station



Sidewalk Paver Detail

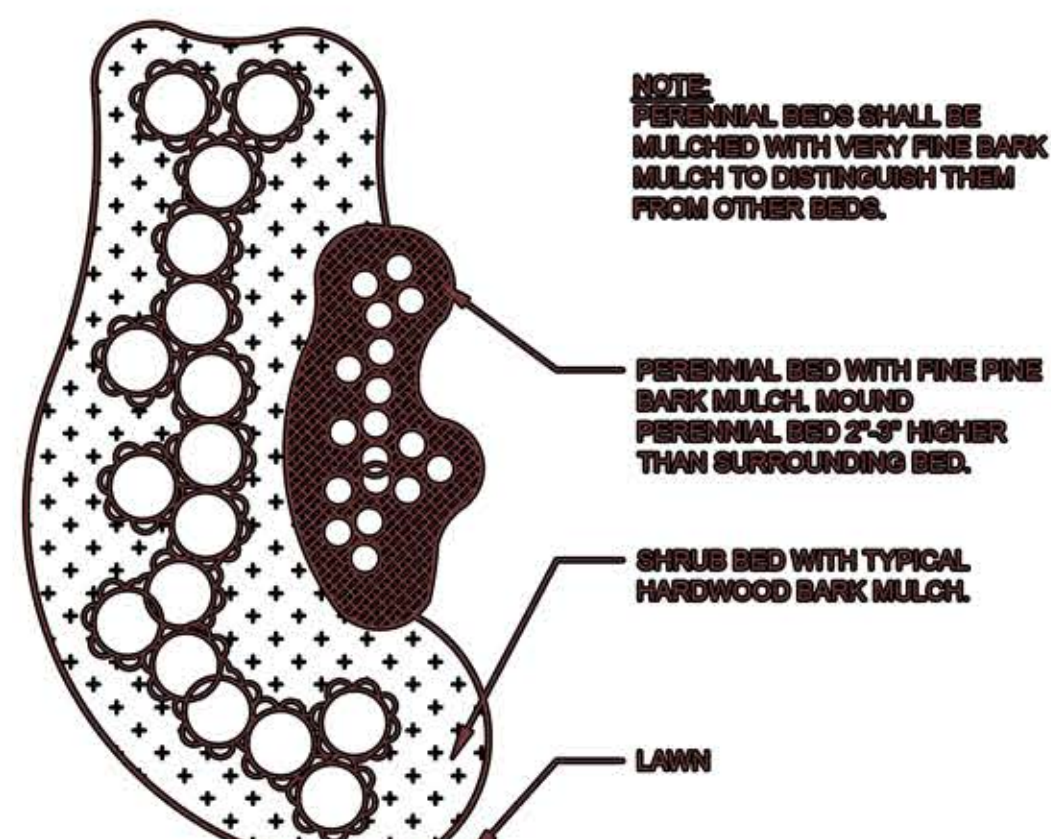
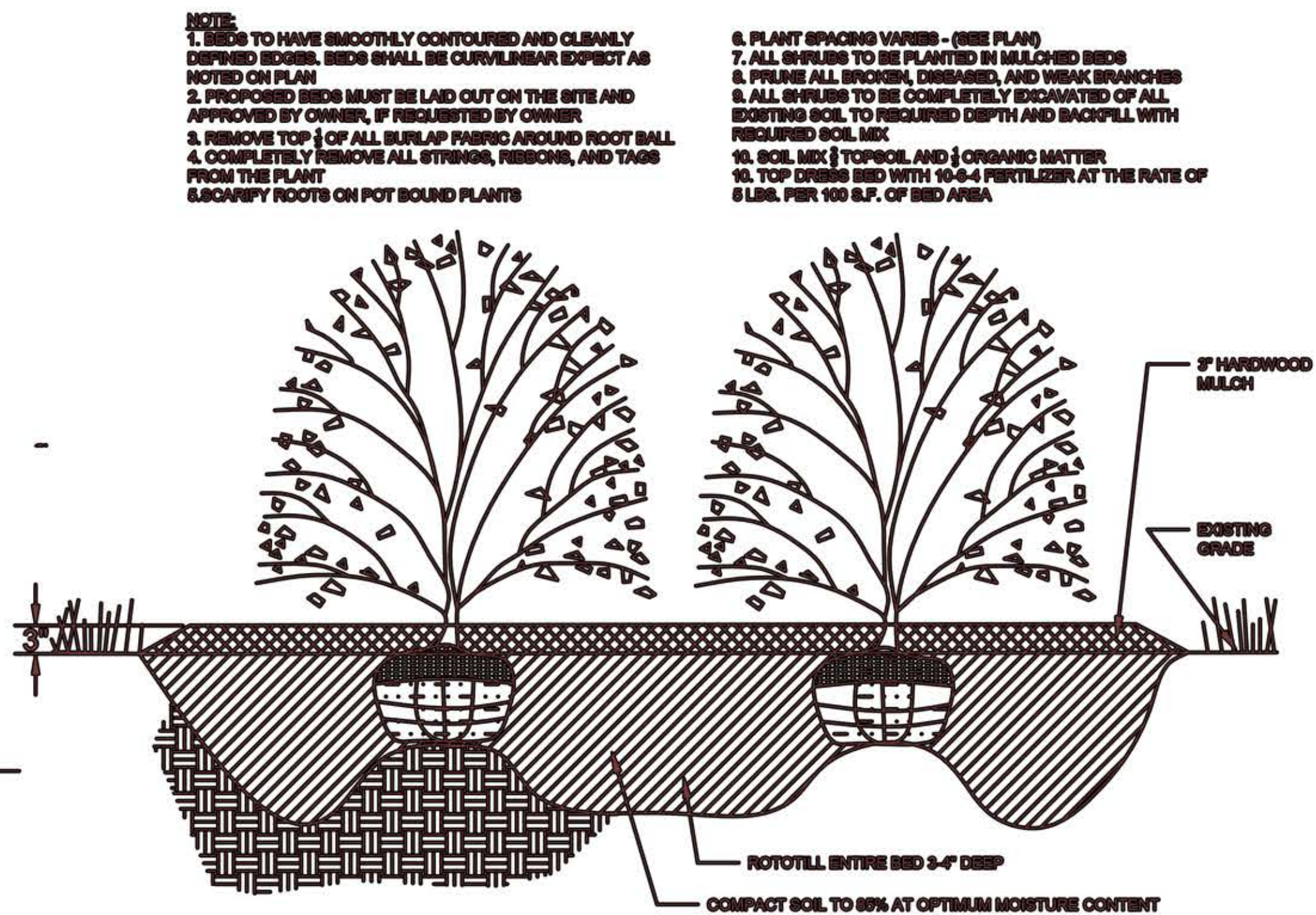
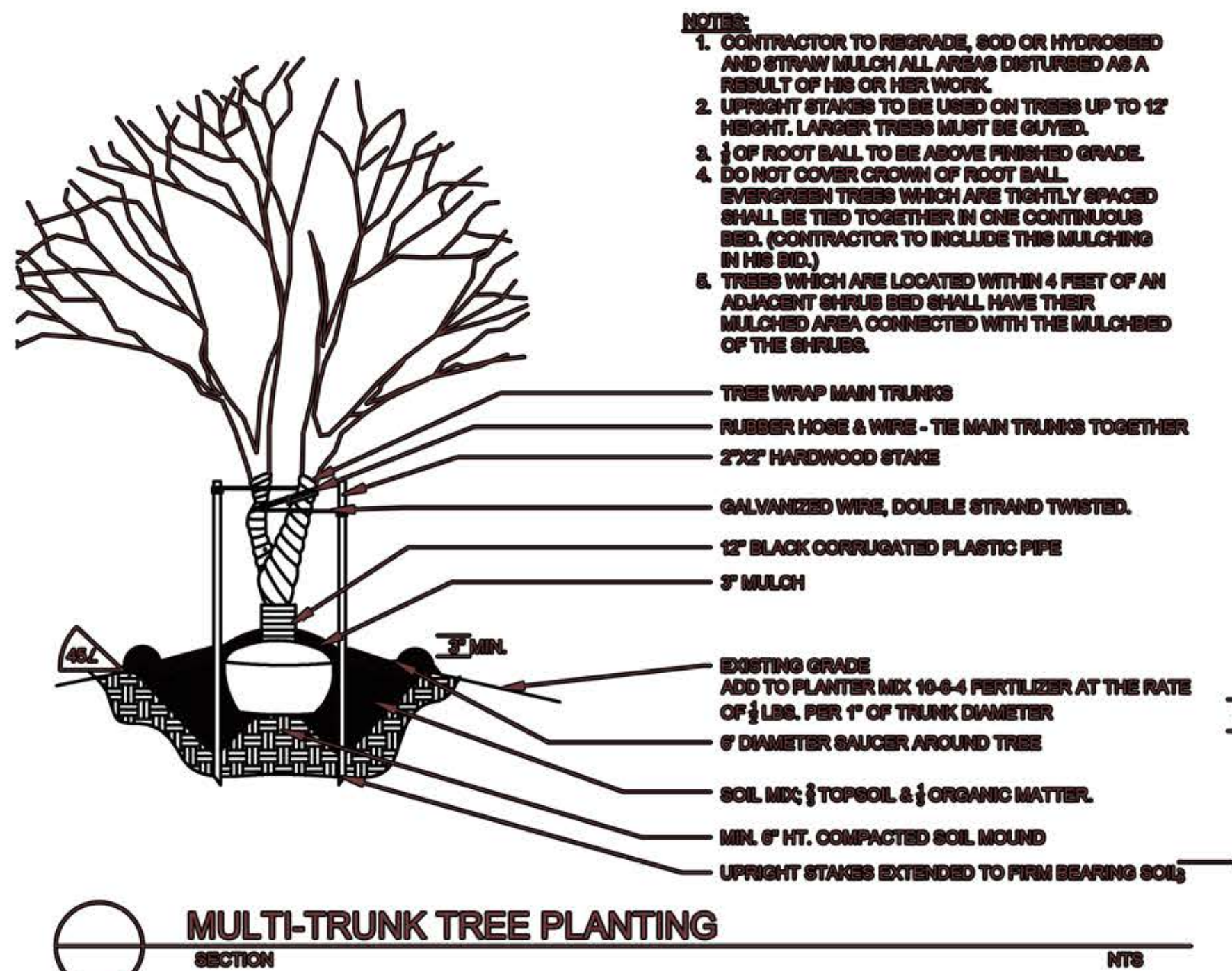
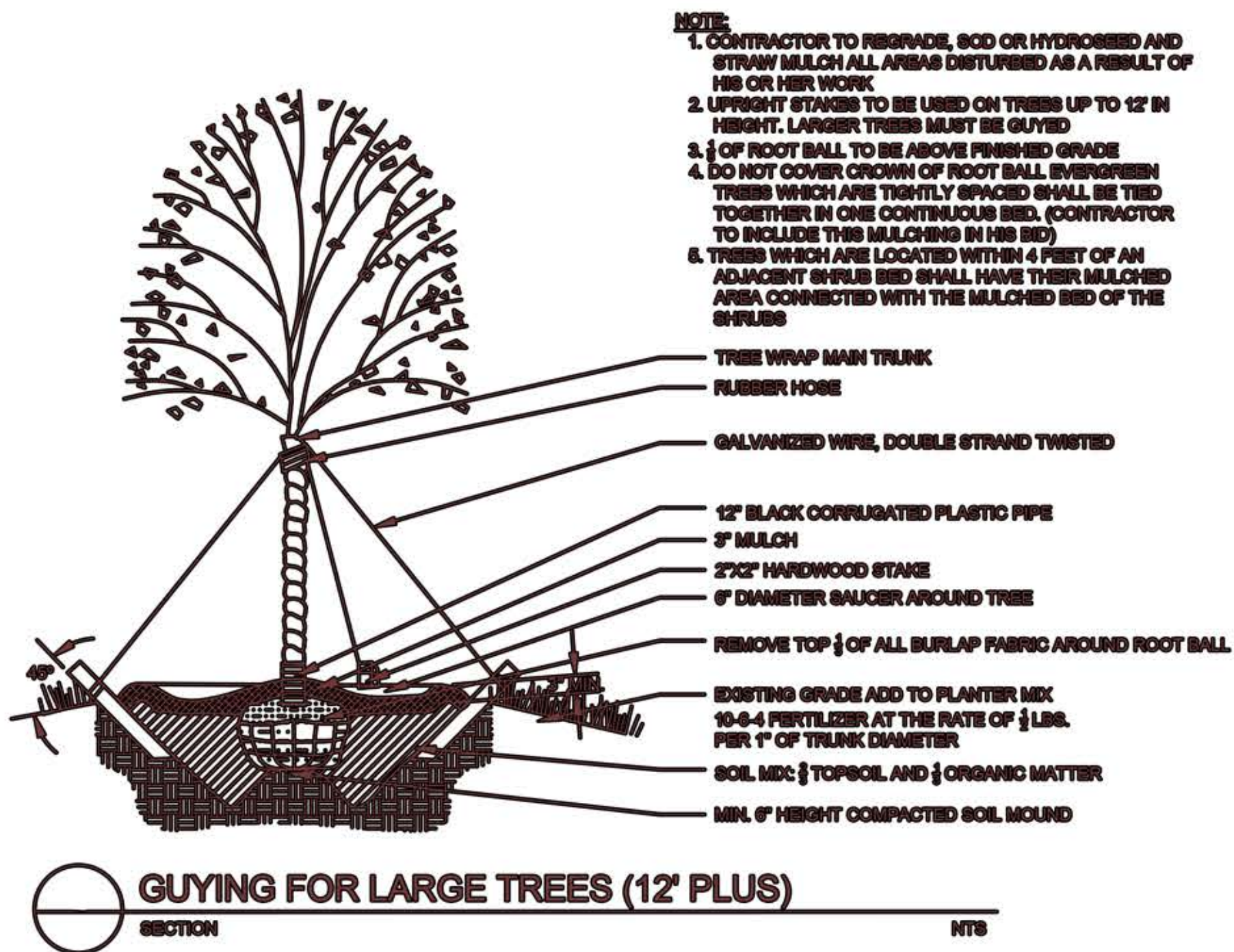
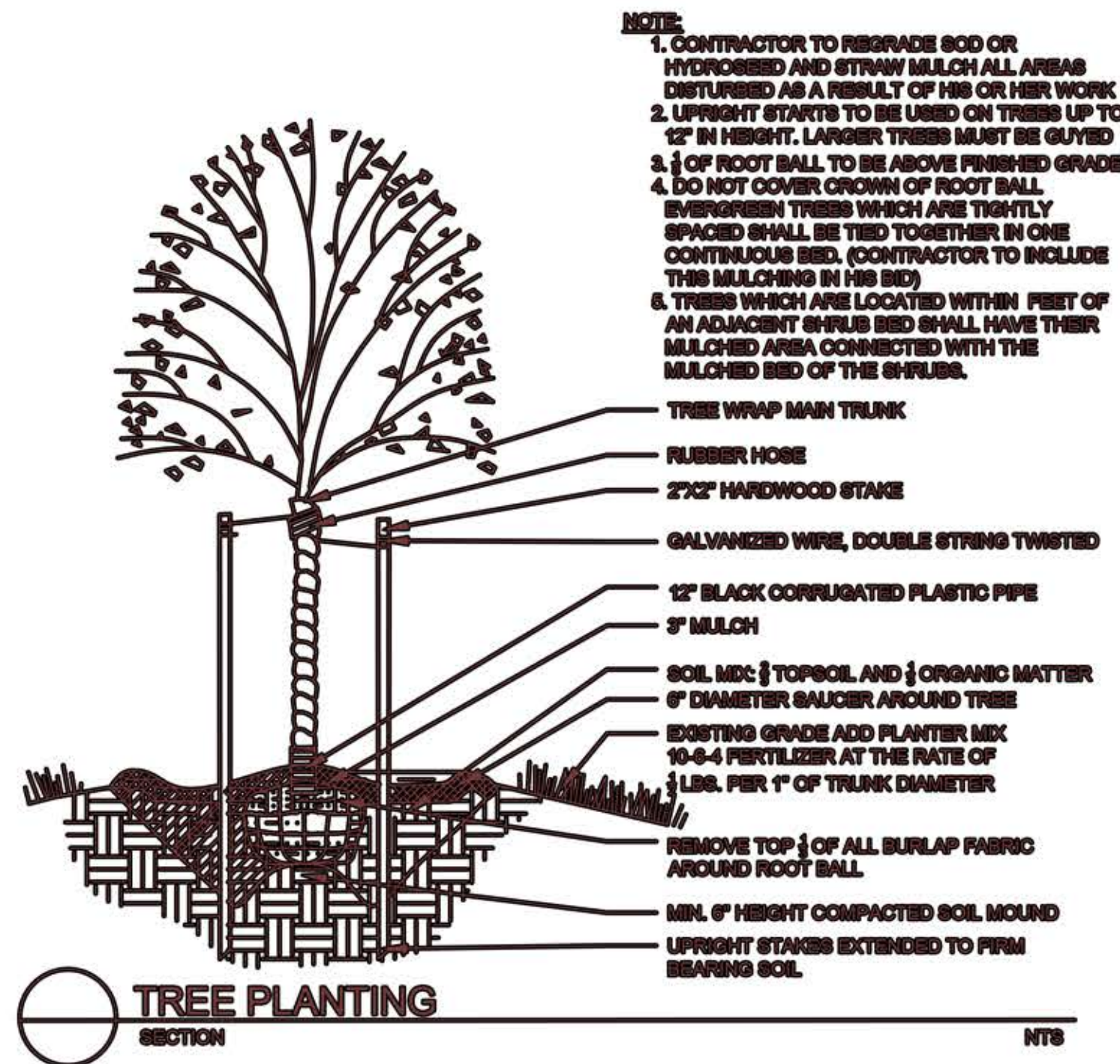


Boardwalk Detail



CONSTRUCTION DETAILS

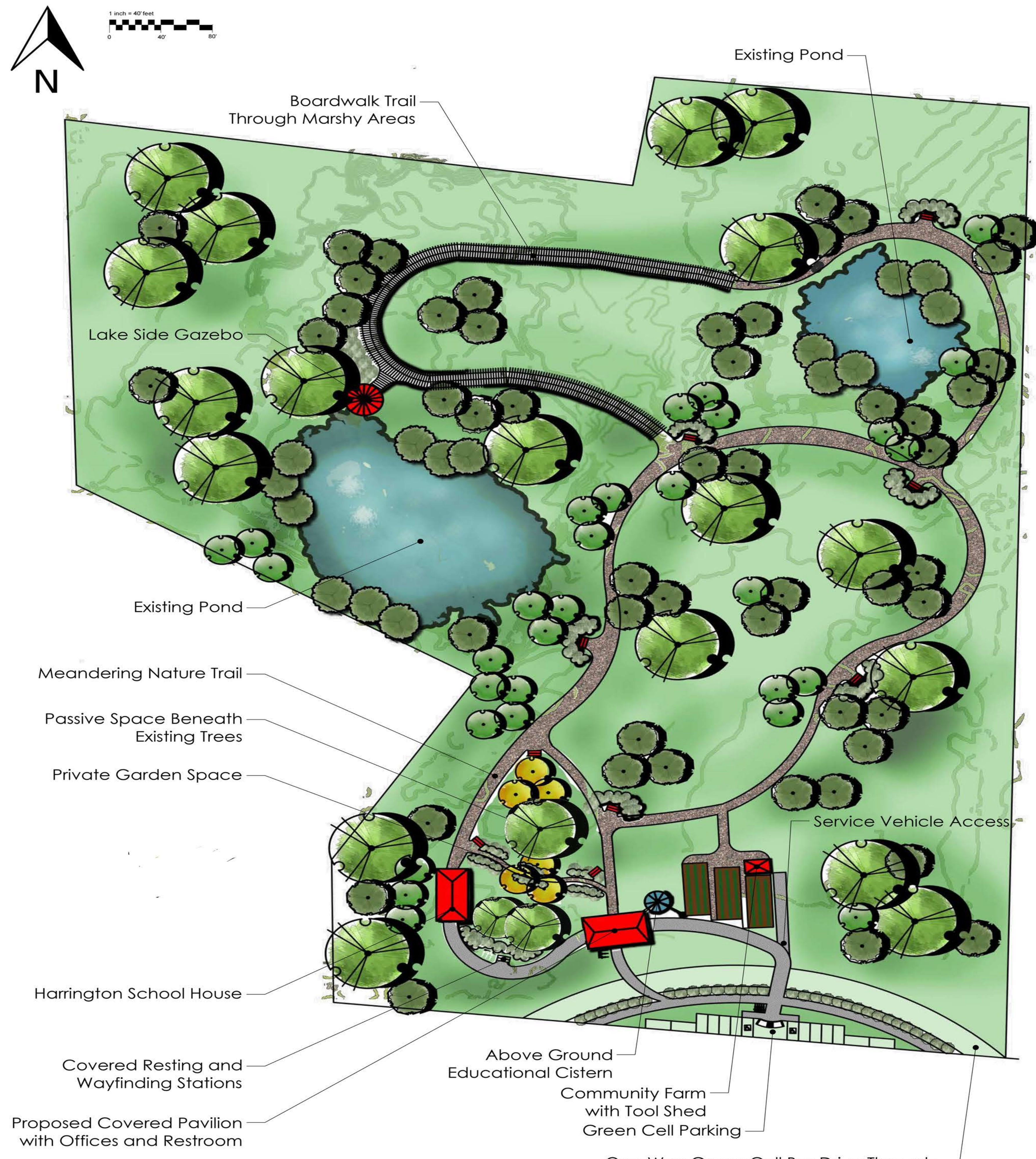
HARRINGTON SCHOOL HOUSE RESTORATION- JOHN BEAL- PROFESSOR ASHLEY STEFFENS SPRING 2014



PLANT SPACING CHART

SPACING "D"	ROW "A"	PLANTS A.S.
6" o.a.	6.25' o.a.	4.81
8" o.a.	8.50' o.a.	2.80
10" o.a.	10.00' o.a.	1.88
12" o.a.	12.00' o.a.	1.18
15" o.a.	15.00' o.a.	0.73
18" o.a.	18.00' o.a.	0.51
24" o.a.	24.00' o.a.	0.29





Thank you for your time.
Any questions or comments?

