



# HOFWYL-BROADFIELD PLANTATION

BRUNSWICK, GA

KATIE BARRENTINE • LAND 4900 • STEFFENS • FALL 2015

Traditionally a rice field plantation of the antebellum period, Hofwyl-Broadfield developed over generations from a rice plantation to a dairy farm and, finally, to a historic treasure of the southeast. Noted for its endurance through five generations as well as its survival through wars and illness, the plantation continues to show its strength and open its gates for visitors to experience the history of Georgia's rice coast firsthand. Its legacy continues to be preserved and promoted through heritage tourism and historical education.

## LOCATOR MAPS:



## SITE PHOTO INVENTORY:



## INVENTORY & ANALYSIS:

### EXISTING CIRCULATION & LAND USE



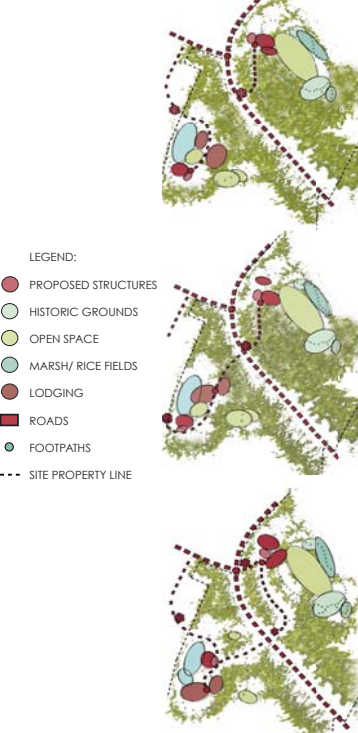
### EXISTING VEGETATION & VIEWS



### COMPOSITE ANALYSIS



## CONCEPTS:

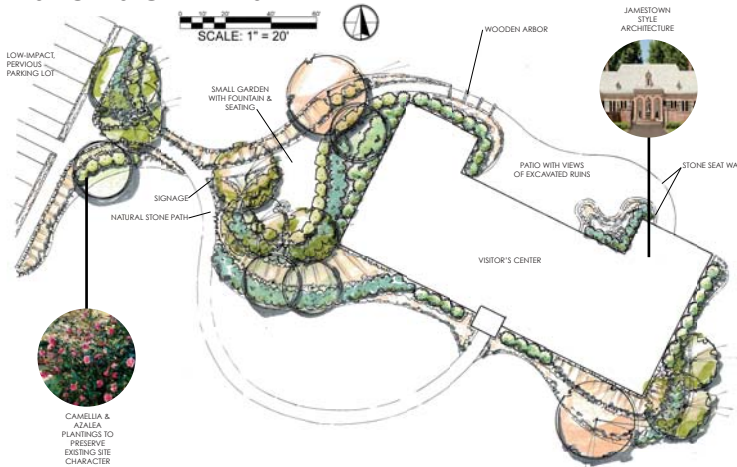


The mission of the Hofwyl-Broadfield Plantation project is to provide an engaging, sensitive, and pleasant design that promotes and celebrates the history, environment, and beauty of the state historic site.

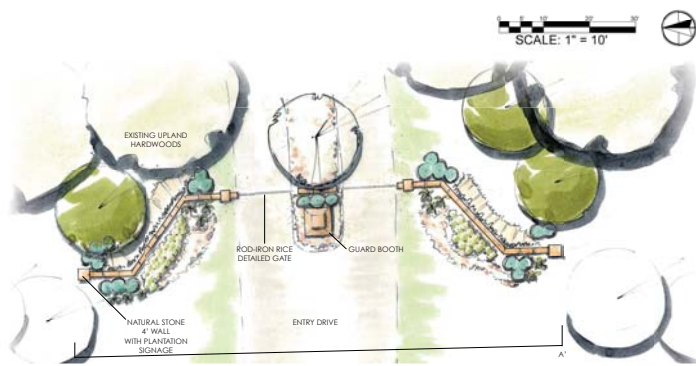
## HOFWYL-BROADFIELD MASTER PLAN



## VISITOR'S CENTER SITE PLAN



## ENTRY SITE PLAN



## PATIO GARDEN PERSPECTIVE



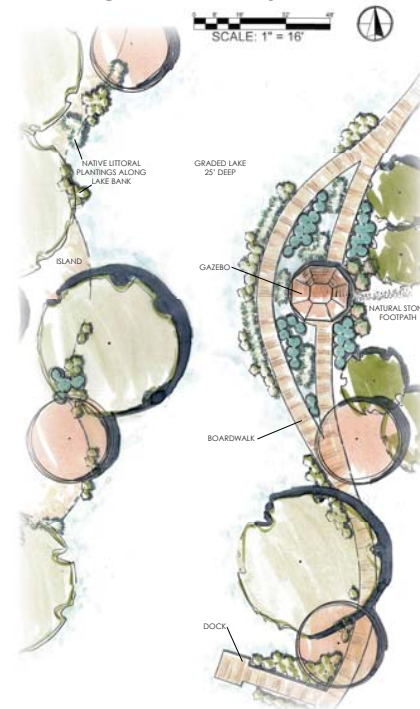
## VISITOR'S CENTER PERSPECTIVE



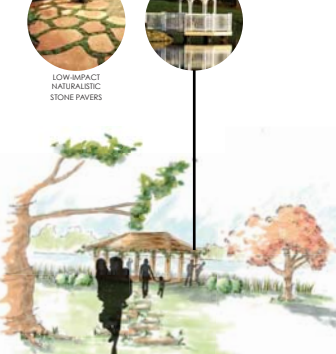
## SECTION OF ENTRY DESIGN



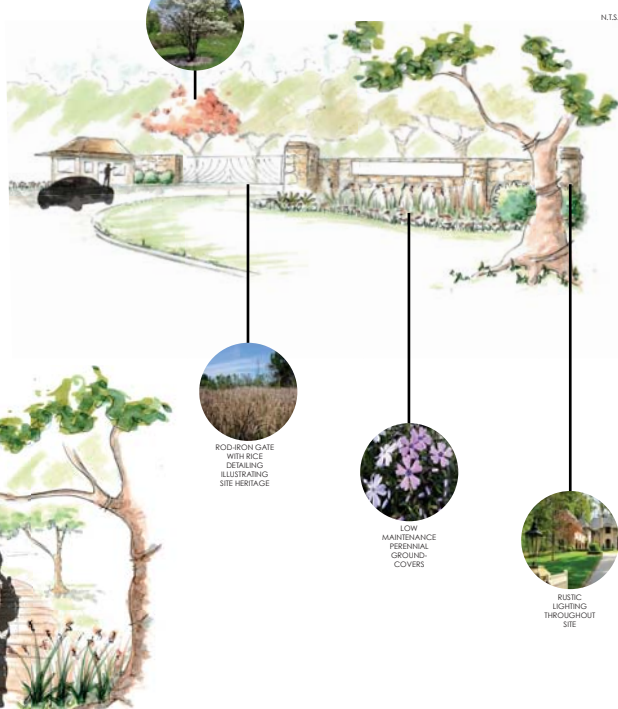
## LAKE BOARDWALK SITE PLAN



## GAZEBO PERSPECTIVE



## MAIN ENTRANCE PERSPECTIVE



## BOARDWALK PERSPECTIVE

