



EAST GEORGIA STATE COLLEGE

CAMPUS MASTER PLAN

SITE METRICS

Location: 2 miles from Swainsboro
 38 miles from Statesboro
 Institution Type: 4 year state college
 Campus Size: 385.61 acres
 Overall Student Population: 3,000

ISSUES + DESIGN INTENT

Problems:

1. Lack of campus icon and connectivity
2. Lack of student gathering space
3. Lack of shade and heat island effect

Solutions:

1. Create a main campus entrance and focal point by providing clear paths along a radiating axis
2. Make a series of gathering spaces that extend down the main quad for students and events
3. Provide ample tree cover throughout the campus and water features in key nodes in order to reduce heat



LEGEND

Existing Buildings

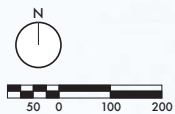
- 1 Plant Operations Building
- 2 Bobcat Villas West
- 3 Learning and Recreation Center
- 4 Bobcat Villas South
- 5 Baseball Field
- 6 Softball Field
- 7 Tennis Courts
- 8 Physical Education Building
- 9 JAM Student Activities Center
- 10 Academic Building
- 11 George L. Smith Building
- 12 Luck Flanders Gambrell Building
- 13 Campus Police Headquarters

Proposed Buildings

- 14 Concession + Information Stand
- 15 Academic Building Expansion
- 16 Proposed Student Housing
- 17 Cross Country Pavilion

Proposed Design Elements

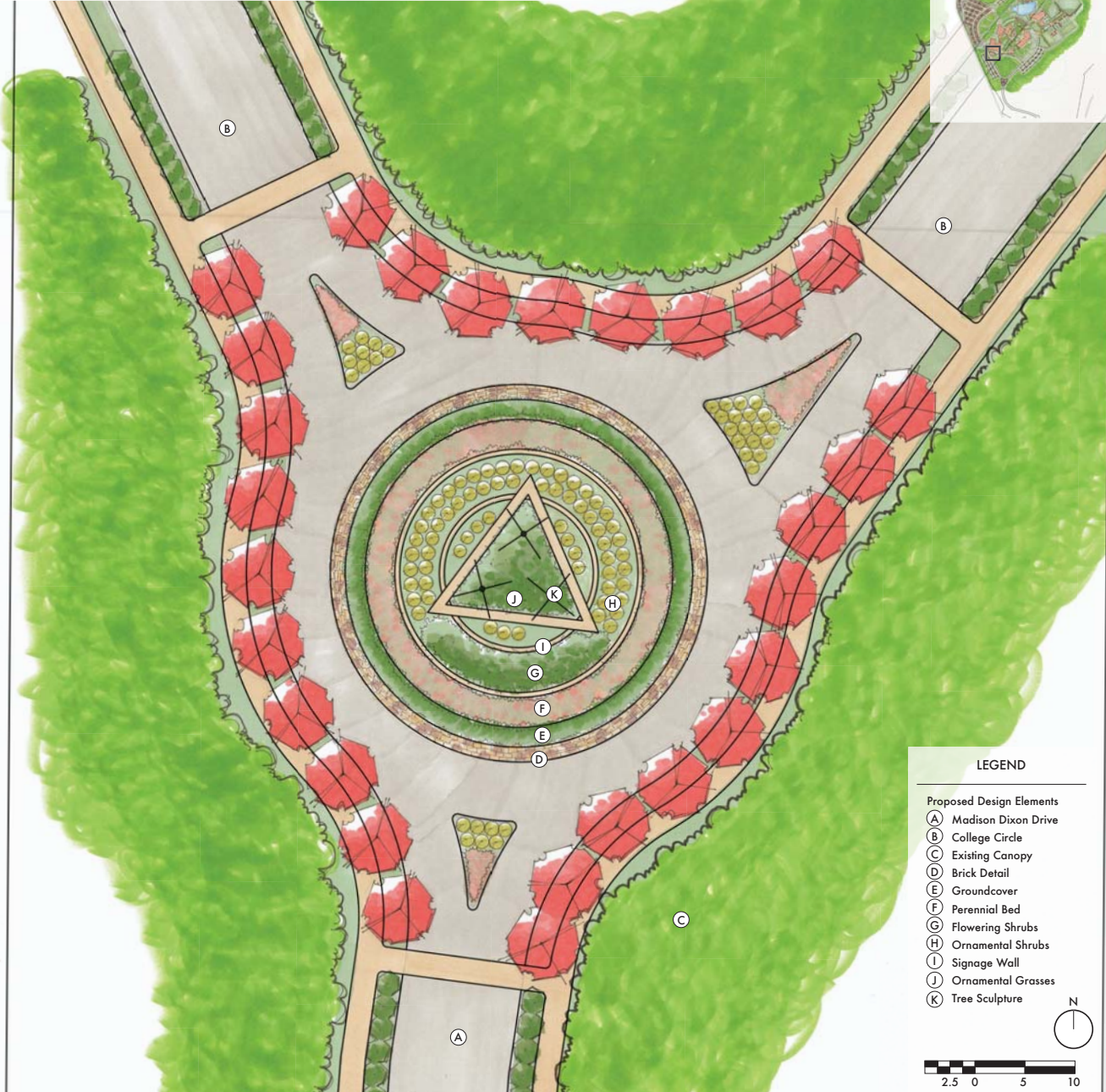
- A Basketball + Volleyball Courts
- B Grilling Area
- C Outdoor Classroom
- D Ezra Pond Wetland Restoration
- E Ezra Pond
- F Water Wall + Reflecting Pool
- G Tailgate Area
- H Amphitheater
- I Bobcat Fountain
- J Student Activities Plaza
- K Wildflower Bee Habitat
- L Paw Fountain
- M Entry Plaza
- N Roundabout + Tree Sculpture





EAST GEORGIA STATE COLLEGE ENTRY ROUNDABOUT

KEY MAP



LEGEND

- Proposed Design Elements
- (A) Madison Dixon Drive
 - (B) College Circle
 - (C) Existing Canopy
 - (D) Brick Detail
 - (E) Groundcover
 - (F) Perennial Bed
 - (G) Flowering Shrubs
 - (H) Ornamental Shrubs
 - (I) Signage Wall
 - (J) Ornamental Grasses
 - (K) Tree Sculpture



PERSPECTIVE OF ROUNDABOUT - NORTH VIEW



CHARACTER IMAGERY





EAST GEORGIA STATE COLLEGE

ENTRY ACADEMIC PLAZA

KEY MAP



LEGEND

Existing Buildings
 1 Luck Flanders Gambrell Building

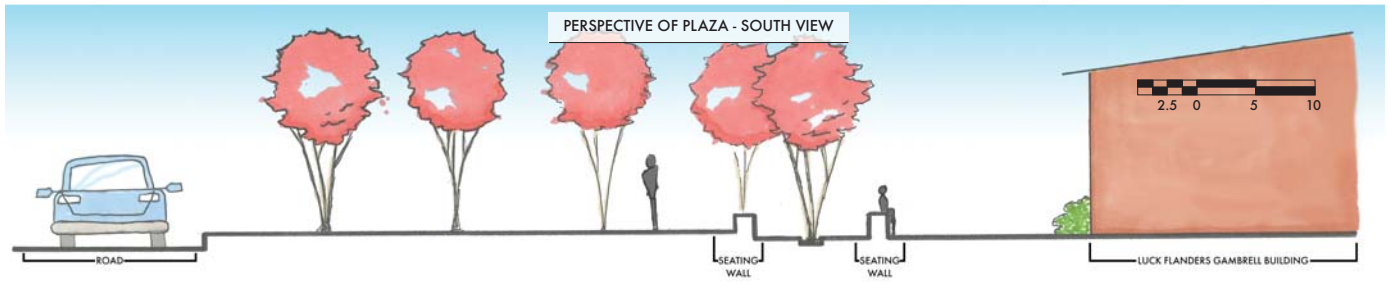
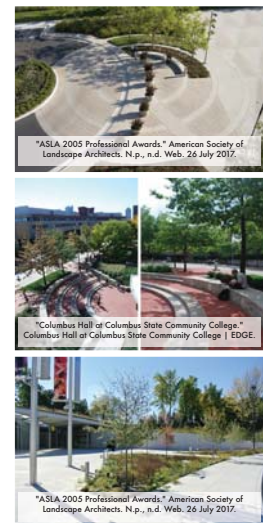
Proposed Design Elements
 A Expanded Parking
 B Drive
 C Sidewalk
 D Existing Canopy
 E Shade Tree
 F Shrub Mass
 G Perennial Beds
 H Seat Wall
 I Ornamental Tree
 J Raised Planter

Scale: 2.5 0 5 10
 North arrow pointing up



SECTION OF PLAZA - EAST VIEW

CHARACTER IMAGERY

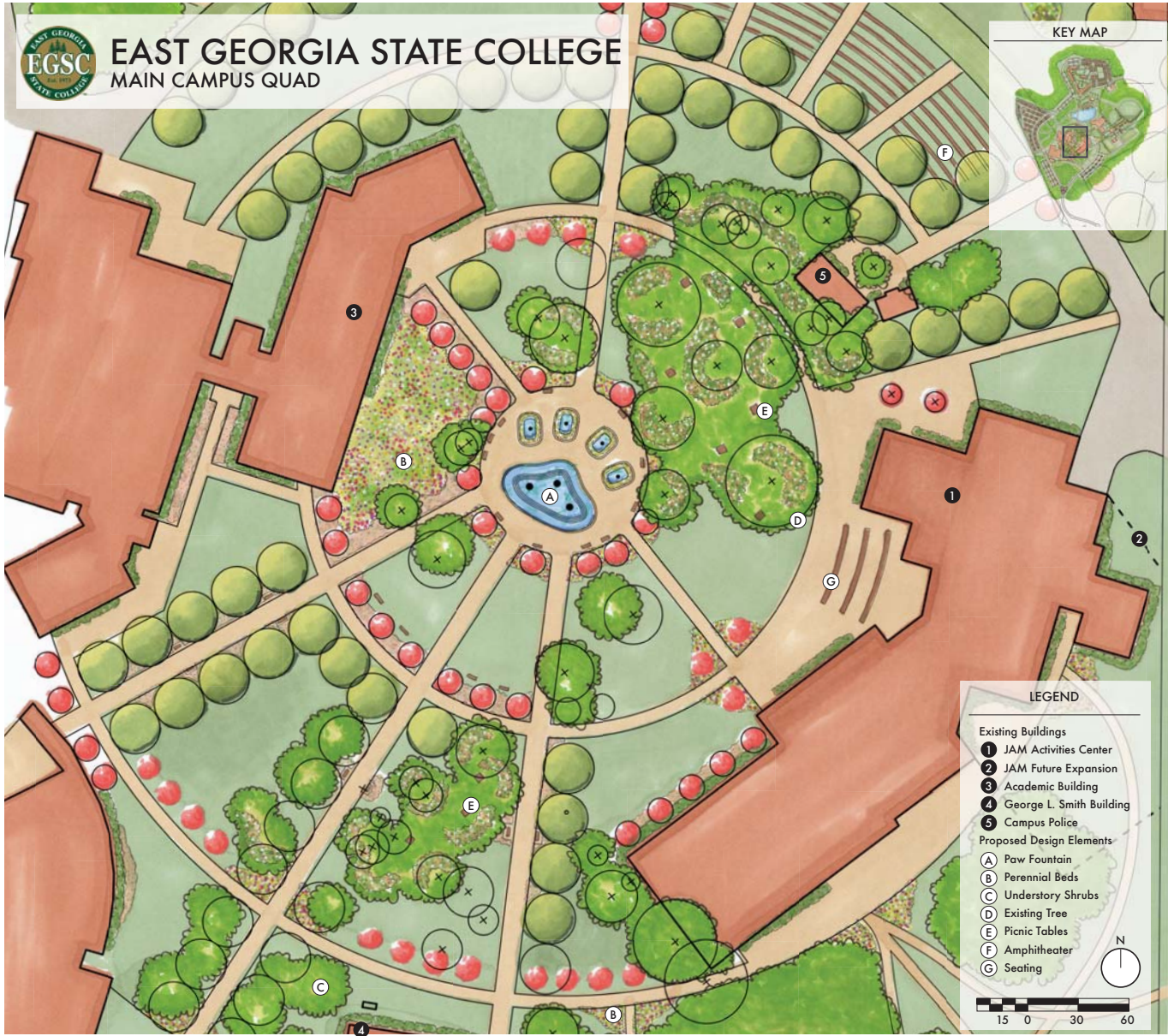


PERSPECTIVE OF PLAZA - SOUTH VIEW

Scale: 2.5 0 5 10
 LUCK FLANDERS GAMBRELL BUILDING



EAST GEORGIA STATE COLLEGE MAIN CAMPUS QUAD



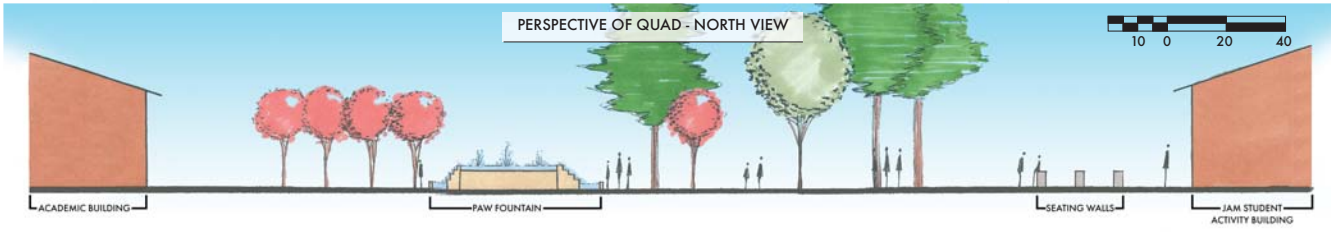
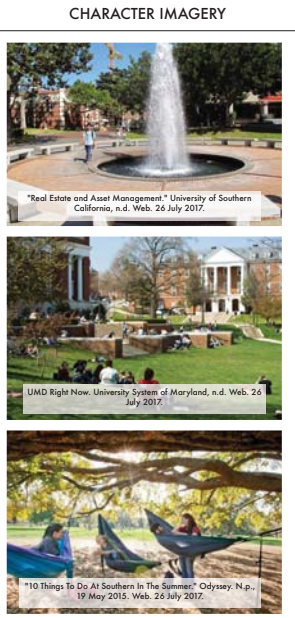
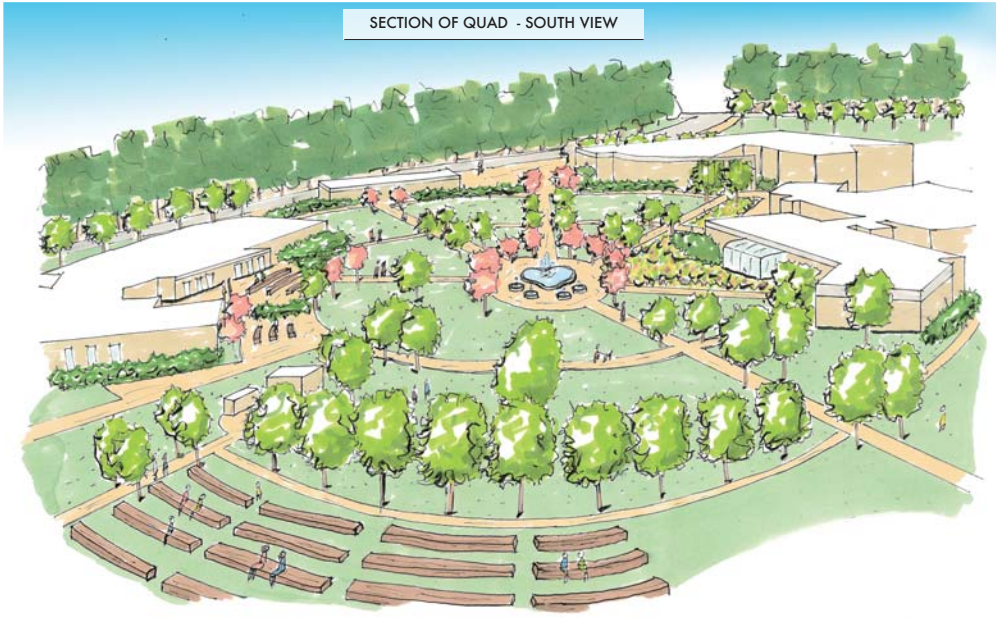
LEGEND

Existing Buildings

- 1 JAM Activities Center
- 2 JAM Future Expansion
- 3 Academic Building
- 4 George L. Smith Building
- 5 Campus Police

Proposed Design Elements

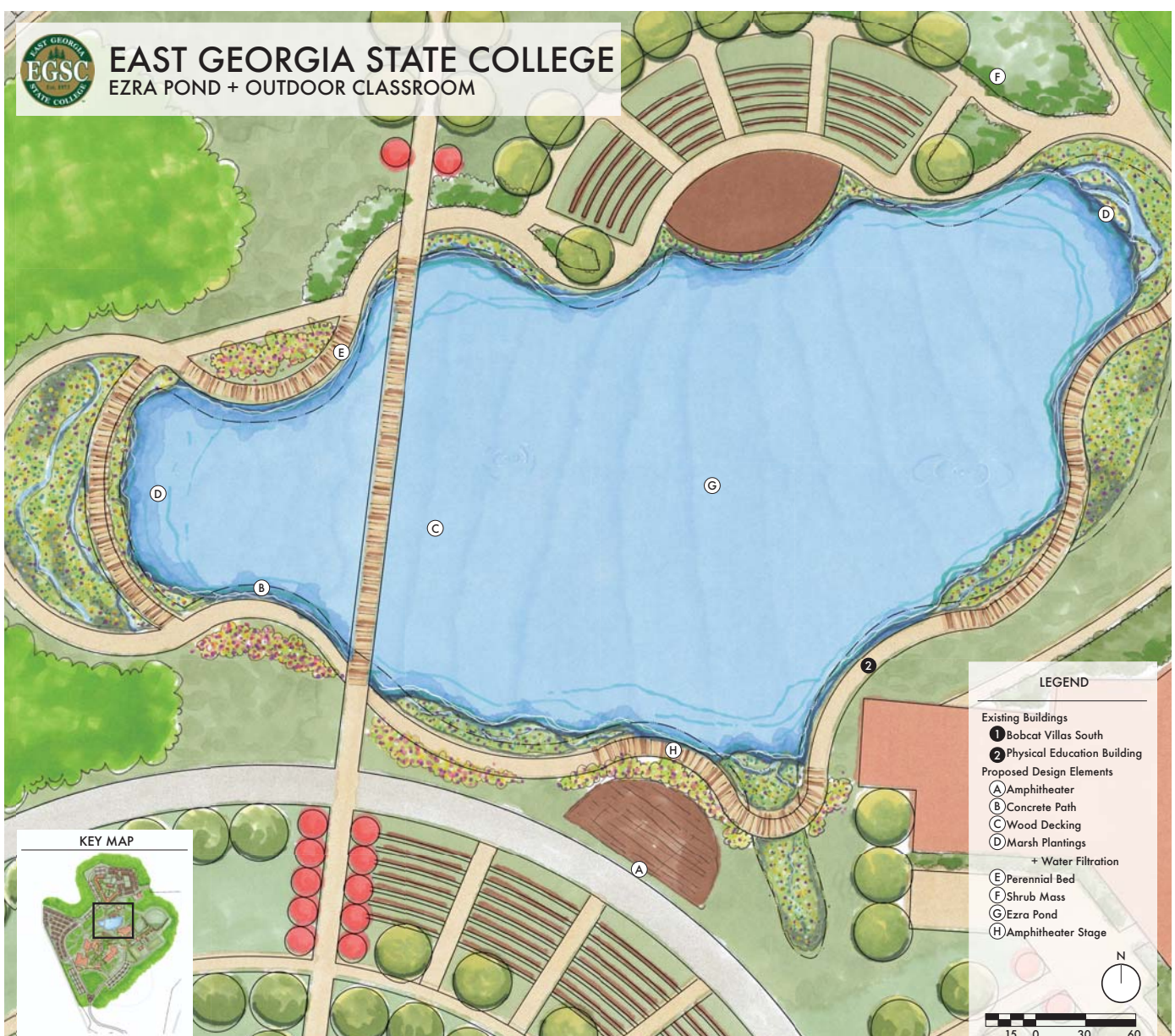
- A Paw Fountain
- B Perennial Beds
- C Understory Shrubs
- D Existing Tree
- E Picnic Tables
- F Amphitheater
- G Seating





EAST GEORGIA STATE COLLEGE

EZRA POND + OUTDOOR CLASSROOM



LEGEND

Existing Buildings

- 1 Bobcat Villas South
- 2 Physical Education Building

Proposed Design Elements

- A Amphitheater
- B Concrete Path
- C Wood Decking
- D Marsh Plantings

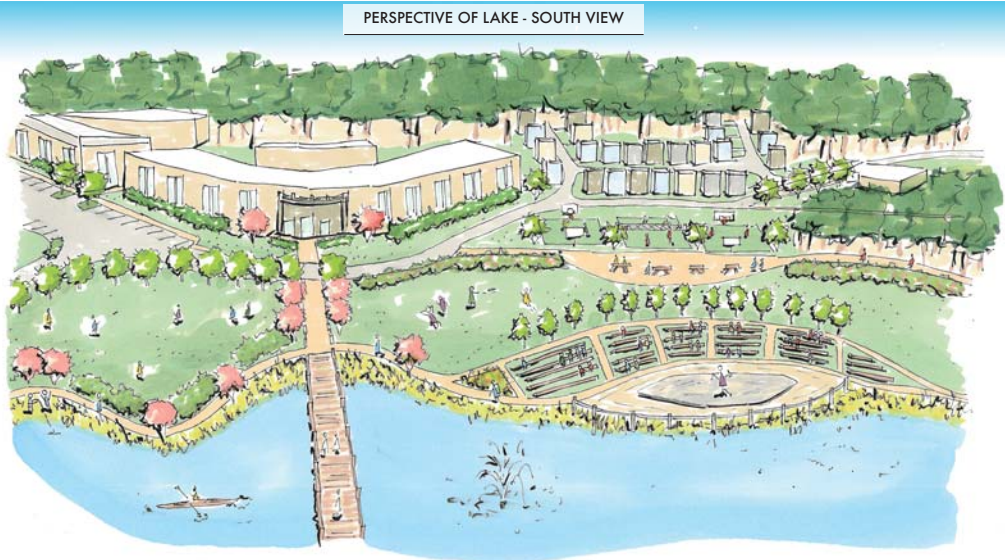
+ Water Filtration

- E Perennial Bed
- F Shrub Mass
- G Ezra Pond
- H Amphitheater Stage

N

15 0 30 60

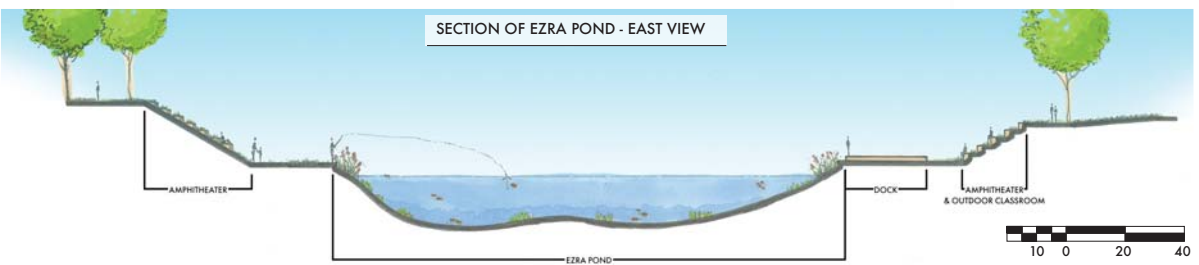
PERSPECTIVE OF LAKE - SOUTH VIEW



CHARACTER IMAGERY



SECTION OF EZRA POND - EAST VIEW





EAST GEORGIA STATE COLLEGE

BOBCAT SPORTS COMPLEX



- LEGEND**
- Existing Buildings
 - 1 Physical Education Building
 - 2 JAM Student Activities Center
 - Proposed Buildings
 - 3 Concession + Info Stand
 - 4 Cross Country Pavilion
 - Proposed Design Elements
 - A Bus Access + Emergency Drive
 - B Bus Parking
 - C Flag Football Field
 - D Cross Country Start/Finish
 - E Tennis Courts
 - F Softball Field
 - G Baseball Field
 - H Bobcat Sculpture
 - I Reflecting Pool
 - J Bleachers
 - K Dug Out
 - L Batting Cage
 - M Raised Planter + Seating
 - N Access Path to Dorms
- N
0 25 50 100

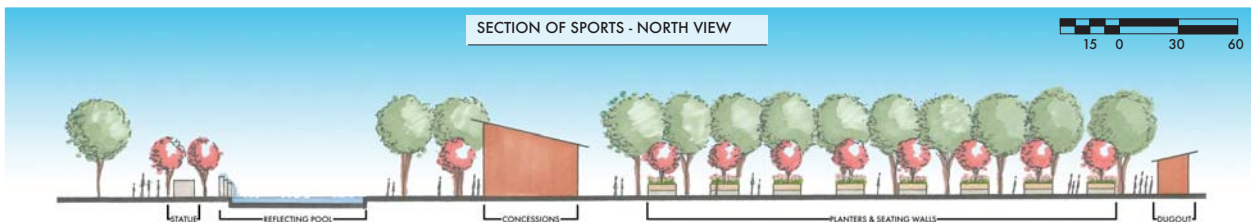
PERSPECTIVE OF SPORTS - EAST VIEW



CHARACTER IMAGERY



SECTION OF SPORTS - NORTH VIEW





EAST GEORGIA STATE COLLEGE

STUDENT HOUSING EXPANSION

KEY MAP



CHARACTER IMAGERY





EAST GEORGIA STATE COLLEGE

STUDENT + FACULTY HOUSING EXPANSION

KEY MAP



LEGEND

METRICS

Dorms: Approx. 330 Beds
 Other: Approx. 340 Beds
 Total Beds: Approx. 670

Existing Buildings

- 1 Academic Building
- 2 Luck Flanders Gambrell Building

Proposed Design Elements

- A College Circle
- B Thigpen Road
- C North Entrance to Campus
- D Proposed Townhomes
- E Existing Canopy



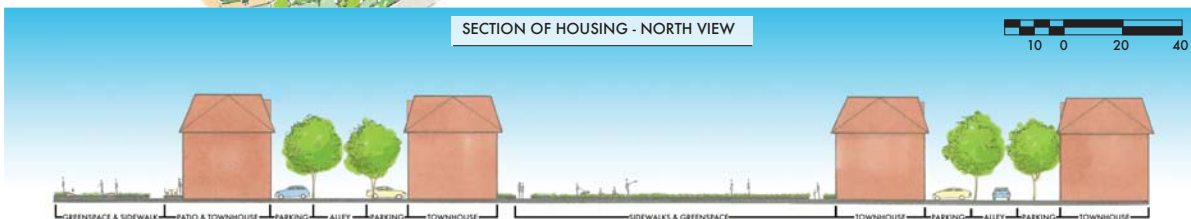
PERSPECTIVE OF HOUSING - NORTH VIEW



CHARACTER IMAGERY



SECTION OF HOUSING - NORTH VIEW





EAST GEORGIA STATE COLLEGE

PLANT + HARDSCAPE PALETTE

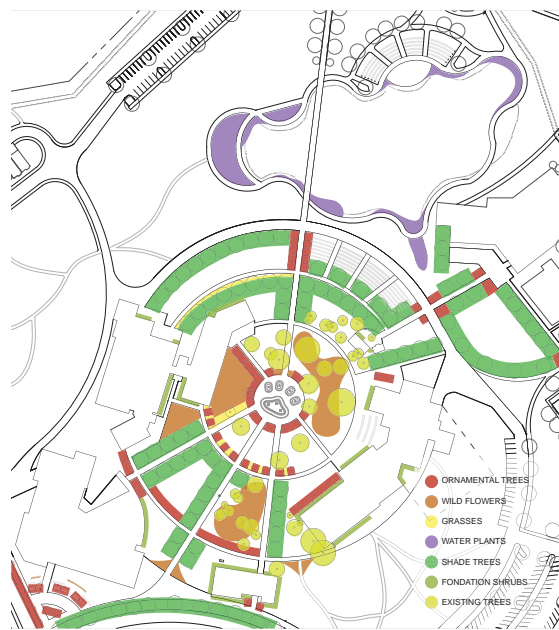
PLANT PALETTE

SHADE TREES

- White Oak
- Tulip Poplar
- Freeman Spruce
- Willow Oak
- Ginkgo

ORNAMENTAL TREES

- Forest Pansy Redbud
- Dogwood
- Single-Trunk Crane Myrica
- Serviceberry
- Sweetbay Magnolia



GRASSES

- Muhly Grass
- Adagio
- Blue Fescue
- Fountain Grass
- Switchgrass

WETLAND TREES

- Bald Cypress
- Sycamore
- River Birch

WETLAND PLANTS

- Virginia Sweetshrub
- Taro Plant
- Swamp Iris
- Bearded Iris
- Swamp Lily
- Swamp Milkweed
- Cardinal Flower
- Horseshoe
- Fatsedge

PERENNIALS

- Blue Star
- Coneflower
- Baptisia
- Daisy
- Phlox
- Salvia
- Black-Eyed Susan
- Aster
- Butterfly Milkweed

HARDSCAPE PALETTE

HARDSCAPE

- Polished Concrete
- Brick
- Wooden Decking
- Permeable Grass Pavers



BOLLARD PLANTERS

Company Name: Planters Unlimited
 Product Name: Tuscana Tapered Square Planters
 Casters (wheels) can be attached
 URL: <http://www.hooksandlattice.com/classic-tapered-square-planter.html>



PAVERS

Company Name: PaverArt
 Product Name: School Seal
 URL: <https://www.paver-artllc.com/school/>



SPORTS LIGHTING

Company Name: SESCO Lighting
 Product Name: Philips ArenaVision LED
 URL: <http://www.sescolighting.com/>

Ephesus Lighting
 Ephesus All Field Series LED
<http://www.ephesuslighting.com/product/field-series/>

Qualite Sports Lighting, LLC
 Game Changer Q-LED
<http://www.qualite.com/>

