



Protect Yourself from Ticks

Elmer Gray, Extension Entomologist

Importance of Ticks

It is important to know about ticks for several reasons. Ticks in the southeastern U.S. can transmit several diseases, including the two most common, Rocky Mountain spotted fever and Lyme disease, and the long-recognized tularemia. More recently recognized tick-borne diseases include Anaplasmosis, Human Ehrlichiosis (pronounced err-lick-e-o-sis) and Southern Tick-Associated Rash Illness (STARI). Ticks can also cause infections if their mouthparts break off when they are removed and can leave persistent welts resulting from reactions to their saliva during normal attachment. If tick populations are high in recreation and camping areas, participation may drop off, causing monetary loss to the leisure industry. Costs to control ticks in yards and homes and on pets and people can run high.

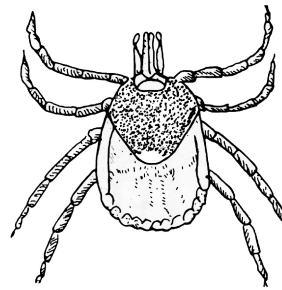
Ticks that Bite

In Georgia, three tick species most commonly feed on humans: the **lone star tick** (*Amblyomma americanum*), **American dog tick** (*Dermacentor variabilis*) and **black-legged tick** (*Ixodes scapularis*).

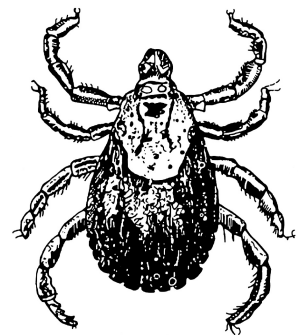
The lone star tick has unusually long mouthparts. The female has a single white spot in the middle of her back, while the white markings on the male are diffuse. Common hosts include large animals such as livestock, dogs, deer and humans as well as smaller animals such as birds and rodents.

The American dog tick has shorter mouthparts. Both males and females have diffuse white markings on their backs. Dogs are the preferred host, but this tick will feed on a variety of large animals, including humans.

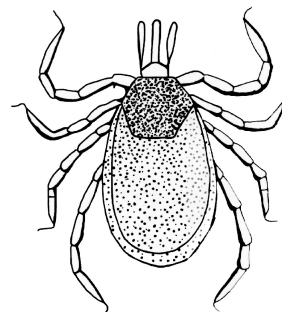
The black-legged tick is smaller than the other two ticks and has no white markings on its back. This tick is common on white-tailed deer, dogs, birds, humans and other large mammals as well as a variety of small rodents.



Lone Star Tick
Amblyomma americanum



American Dog Tick
Dermacentor variabilis



Black-legged Tick
Ixodes scapularis

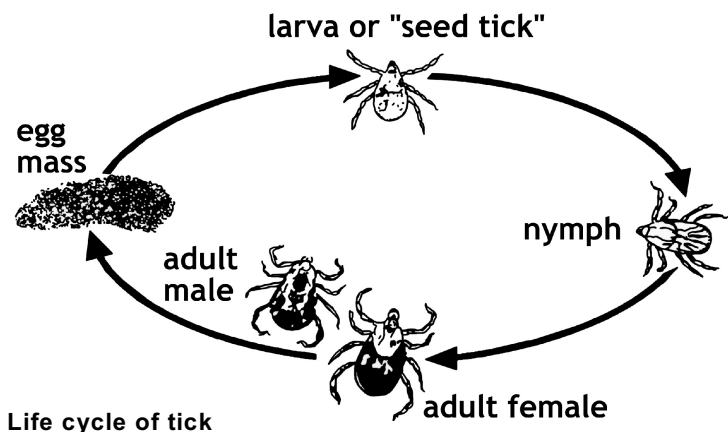
Life Cycle

All three ticks go through a similar life cycle. Each stage in the tick's life cycle must have a blood meal for the tick to mature into an adult and lay eggs for the next generation. The adult female is fertilized by the male while she is engorging with blood on her host. She will then drop off the host and, in about three to 10 days, begin laying 4,000 to 6,000 eggs in a mass.

Within two weeks to several months, depending on the environment, the eggs hatch into six-legged larvae called "seed ticks." Seed ticks will usually be concentrated in the area where the eggs were laid; consequently, unsuspecting hosts can become infested by significant numbers of larvae.

The "seed" or larval ticks will typically climb up a blade of grass and wait for a host – usually a small rodent. After engorging with blood, the larval tick will drop off the host, shed its skin and change into an eight-legged nymph. The nymph will seek another host, engorge with blood, drop off, shed its skin and develop into the adult stage. Adult ticks usually prefer to feed on large animals such as deer, horses, dogs or humans. Ticks are very adept at locating a host by detecting exhaled carbon dioxide and body warmth. Feeding is usually done without pain and may take several days for completion. Larval, nymph and adult ticks can each survive up to a year waiting for a host.

Ticks survive best in high grass or brushy areas that are also attractive to their hosts. These are the areas you are most likely to encounter a tick. Game trails and large deer populations are often associated with large tick populations. Ticks also need a high level of moisture for survival. Bottomlands where high humidity, thick vegetation and high deer populations often converge are preferred tick habitats. Conversely, dehydration from hot, dry weather combined with short grass that has little or no mulch can be fatal to ticks.



All three stages of the lone star and black-legged ticks will feed on humans, as well as other large animals. The American dog tick feeds on humans only in the adult stage.

Diseases

Rocky Mountain Spotted Fever: The most important tick-borne disease in the southeastern U. S. continues to be Rocky Mountain spotted fever, which is caused by *Rickettsia rickettsii*, a rickettsial or bacteria-like organism. Rocky Mountain spotted fever has a fatality rate of three to five percent, with two-thirds of the cases occurring in children under the age of 15. This disease is characterized by a sudden onset of chills, fever, headache and bloodshot eyes. The name "spotted fever" refers to the rash that appears two to four days after the onset of fever. The rash characteristically starts on the hands and feet as small, flat, pink spots that do not itch and gradually spreads to most of the body. Rocky Mountain spotted fever can be easily misdiagnosed as measles. Diagnosis is aided by a history of a recent tick bite and confirmed by a blood test. Antibiotics give good treatment. The American dog tick is the primary vector.

Lyme Disease: Lyme disease was first recognized in Georgia in 1987. While cases occur all over the state, the largest numbers are in the northern half of the state. The black-legged tick is the primary vector, especially in the nymphal stage. Its small size (1/16 inch) probably contributes to the failure to detect the nymph while feeding.

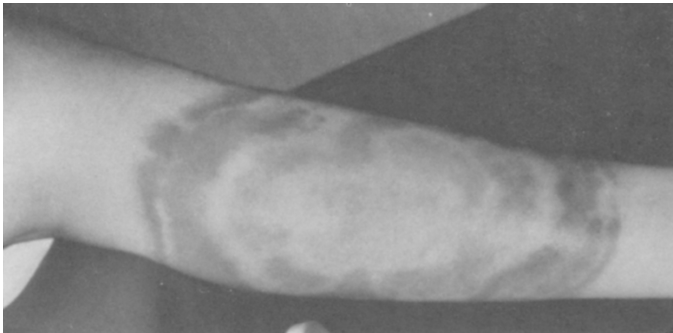


Actual black-legged tick size

The cause of Lyme disease is *Borrellia burgdorferi*, a bacterium. The initial sign of Lyme disease infection is a ring-like swollen rash, known as "erythema migrans," that appears at the site of the tick bite within three to 22 days. The rash usually has a bright red outer ring with a lighter center ring. The rash is frequently accompanied by joint pain and flu-like symptoms (fever, headache, stiff neck, muscle pain and sometimes nausea). While the rash is very helpful for diagnosis, it does not develop in all cases. If you develop flu-like symptoms, joint pain or a rash a few days to a month after a tick bite, consult your physician for a diagnosis. A blood test can help confirm the disease. It needs to be taken three to six weeks after symptoms develop. If a blood test is taken too soon for antibodies to develop, the test may show a false negative. While it is desirable to begin antibiotic treatment soon after symptoms develop, this manner of

treatment can also produce a false negative. Lyme disease is easily treated in the early stages with antibiotics; if delayed, treatment can be more difficult.

The later stages of Lyme disease can begin weeks or even years after being bitten by an infected tick and can be very serious. This stage of the disease can be easily misdiagnosed because it mimics a variety of cardiovascular, arthritic and neurological diseases. Joint pain can be severe, with permanent destruction of bone and cartilage of the joints if left untreated. No deaths have been reported due to initial infection, but complications may affect the life span of some individuals. Personal protection, early diagnosis and quick treatment are your best defense against Lyme disease.



Typical rash of Lyme disease

Other Diseases Transmitted By Ticks: Tularemia is a relatively rare, but potentially serious tick-transmitted disease that has been recognized in the southeastern U.S. for many years. Anaplasmosis, Human Ehrlichiosis and Southern Tick-Associated Rash Illness are all relatively rare, but still potentially serious diseases.

All four of these diseases are believed to be of bacterial origin, commonly produce an influenza-like illness and can be readily treated with antibiotics.

Personal Protection

The best way to avoid tick bites and tick-borne diseases is to stay in areas where the vegetation is open or maintained below ankle height. When on wooded trails, in high grass or in brushy areas, it is imperative to take personal precautions. Avoiding vegetation that brushes against the body, especially the legs, is essential to avoiding host-seeking ticks. Otherwise:

1. Wear long pants. Tuck the pant leg into your socks and tuck your shirt under your belt. The tick will move up toward the head where detecting it is easier. You don't want the tick to get under your clothing where detection is more difficult.

2. Use a repellent. A repellent containing "deet" is available in many brands. Bottled deet can be rubbed on the skin and will normally last several hours. Deet in aerosols can usually be sprayed on clothing as well as skin for added protection. Permanone, containing permethrin, comes only as an aerosol and is sprayed on the clothing only. It is long-lasting and not only repels but also kills. The best combination is to put deet on skin (as directed on the label) and Permanone on clothing.
3. Check yourself for ticks at least twice a day. There is evidence that the longer an infected tick feeds, the greater the chance it has of transmitting a disease to you. Early removal is good prevention.
4. Remove embedded ticks with forceps, cloth or paper wrapped around the tick as near to the point of attachment as possible. Use a firm, steady pull. Do not jerk or twist because you may break off the mouthparts and get the site infected. Do not use unprotected fingers. Apply a disinfectant to the site immediately after removing a tick.

Area Control

Around your house, you can treat your dog with an approved pesticide for ticks, keep the grass cut short, fence the yard to keep out other dogs that bring ticks in, and use a pesticide in the yard as needed to reduce tick populations. Refer to the current Georgia Pest Management Handbook for the most up-to-date and effective pesticide recommendations. A dog can serve as a reservoir for both Lyme disease and Rocky Mountain spotted fever. While dogs do not seem to be affected by Rocky Mountain spotted fever, they can suffer joint pain from Lyme disease.

Georgia is blessed with beautiful outdoor recreation areas, and its citizens should continue to enjoy them. Taking a few precautions and being aware of the symptoms of tick-borne diseases such as Lyme disease, Rocky Mountain spotted fever and the other, less-common diseases should give you good protection against ticks.

Attention: Pesticide Precautions

1. Observe all directions, restrictions and precautions on pesticide labels. It is dangerous, wasteful and illegal to do otherwise.
2. Store all pesticides in original containers with labels intact and behind locked doors. "Keep pesticides out of the reach of children."
3. Use pesticides at correct label dosage and intervals to avoid illegal residues or injury to plants and animals.
4. Apply pesticides carefully to avoid drift or contamination of non-target areas.
5. Surplus pesticides and containers should be disposed of in accordance with label directions, so contamination of water and other hazards will not result.
6. Follow directions on the pesticide label regarding restrictions as required by state and federal laws and regulations.
7. Avoid any action that may threaten an endangered species or its habitat. Your county extension agent can inform you of endangered species in your area, help you identify them and, through the Fish and Wildlife Service Field Office, identify actions that may threaten endangered species or their habitat.

The author would like to express his appreciation to Dr. Burton Evans, Extension Entomologist (ret.), who originally developed this publication and to Dr. Beverly Sparks, who revised the previous version.

Learning *for* **Life**

The University of Georgia and Ft. Valley State University, the U.S. Department of Agriculture and counties of the state cooperating. Cooperative Extension, the University of Georgia College of Agricultural and Environmental Sciences, offers educational programs, assistance and materials to all people without regard to race, color, national origin, age, gender or disability.

An Equal Opportunity Employer/Affirmative Action Organization Committed to a Diverse Work Force