

# **Body Condition Scoring**

## **Photo Album**

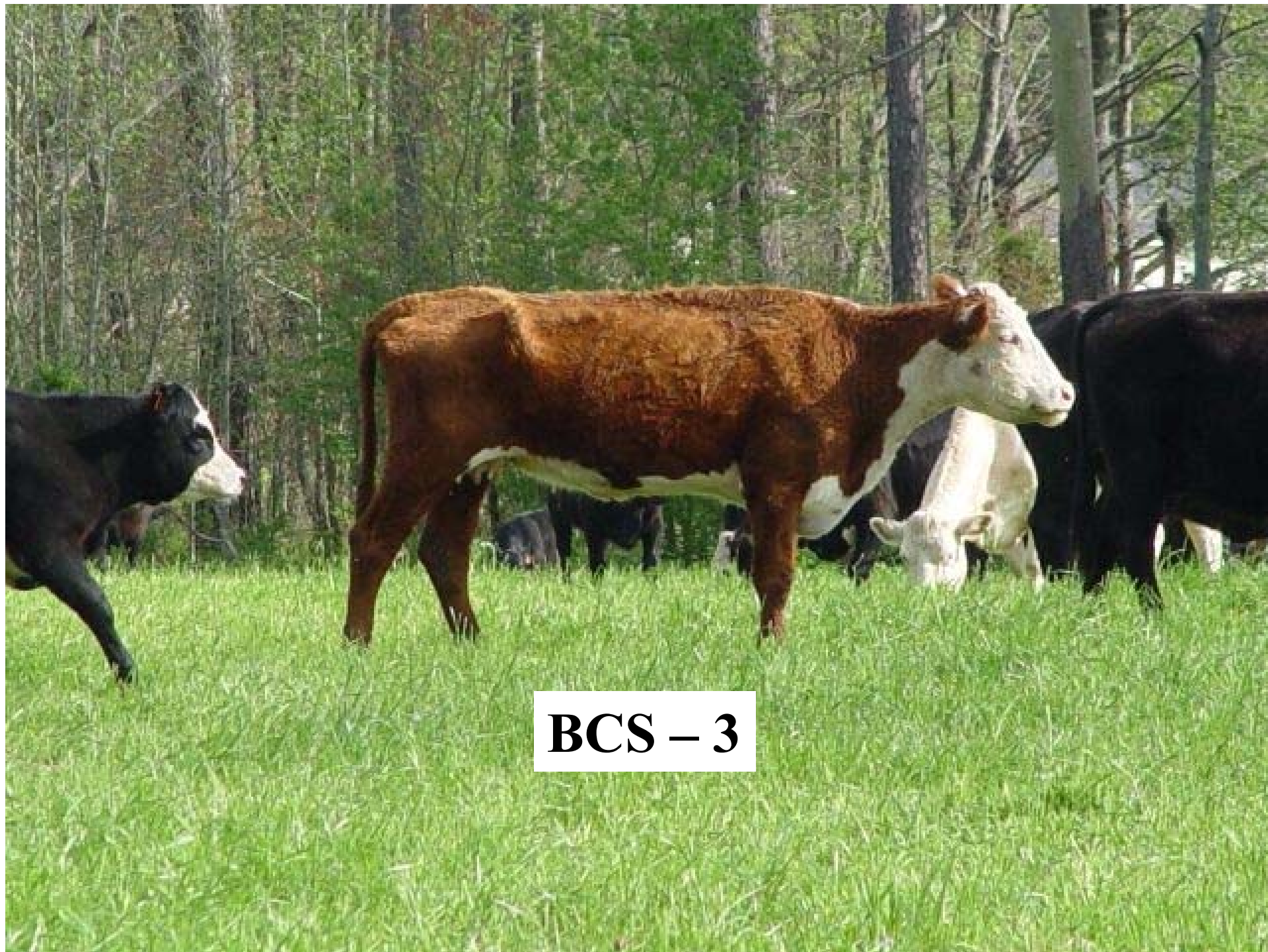
Compiled by:

**Timothy W. Wilson**

*Extension Animal Scientist*

**G. Scott Sell**

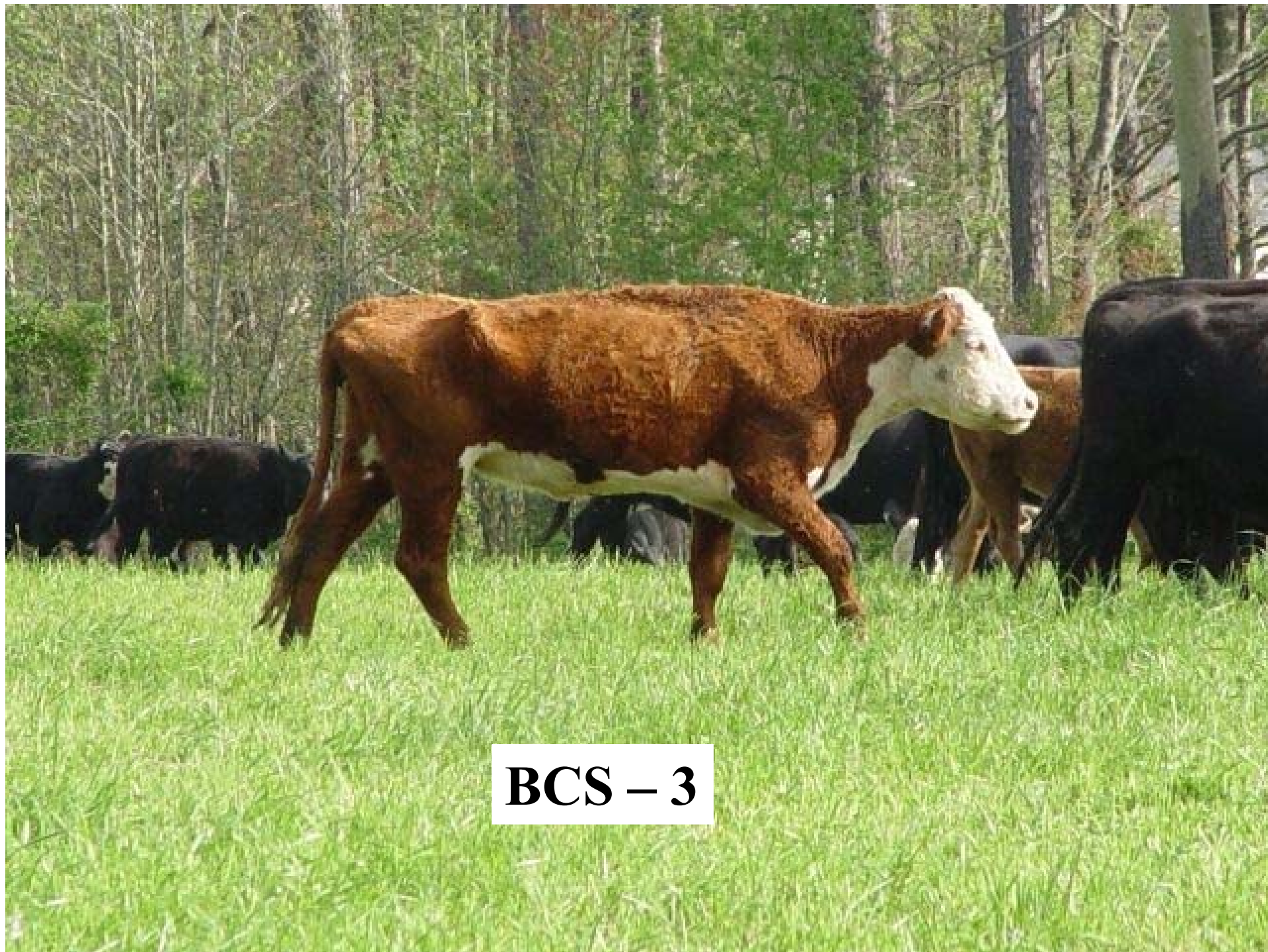
*Screven County Extension Agent*



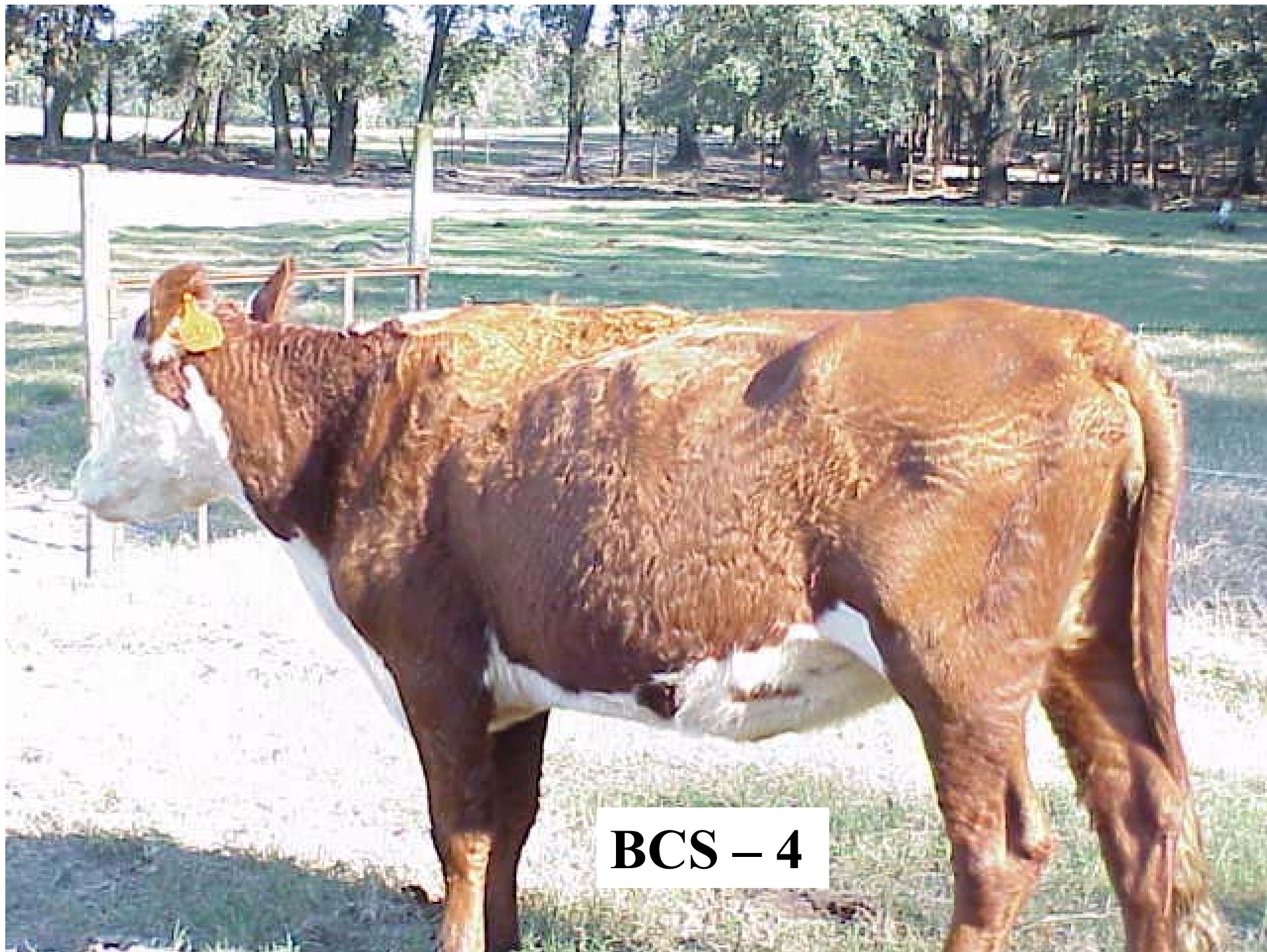
**BCS – 3**



**BCS - 3**



**BCS – 3**



**BCS - 4**





**BCS - 4**



**BCS - 5**

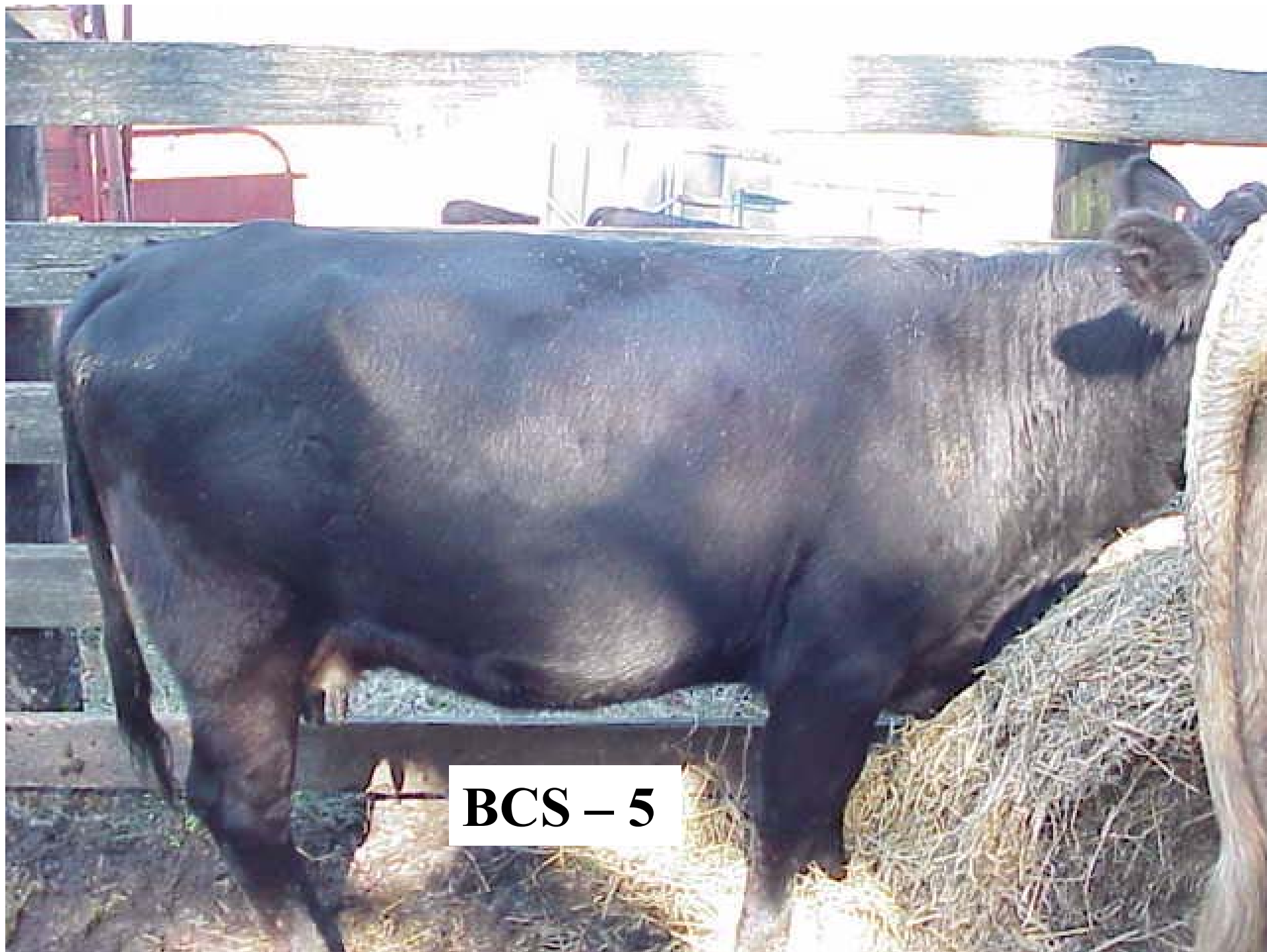


**BCS - 5**

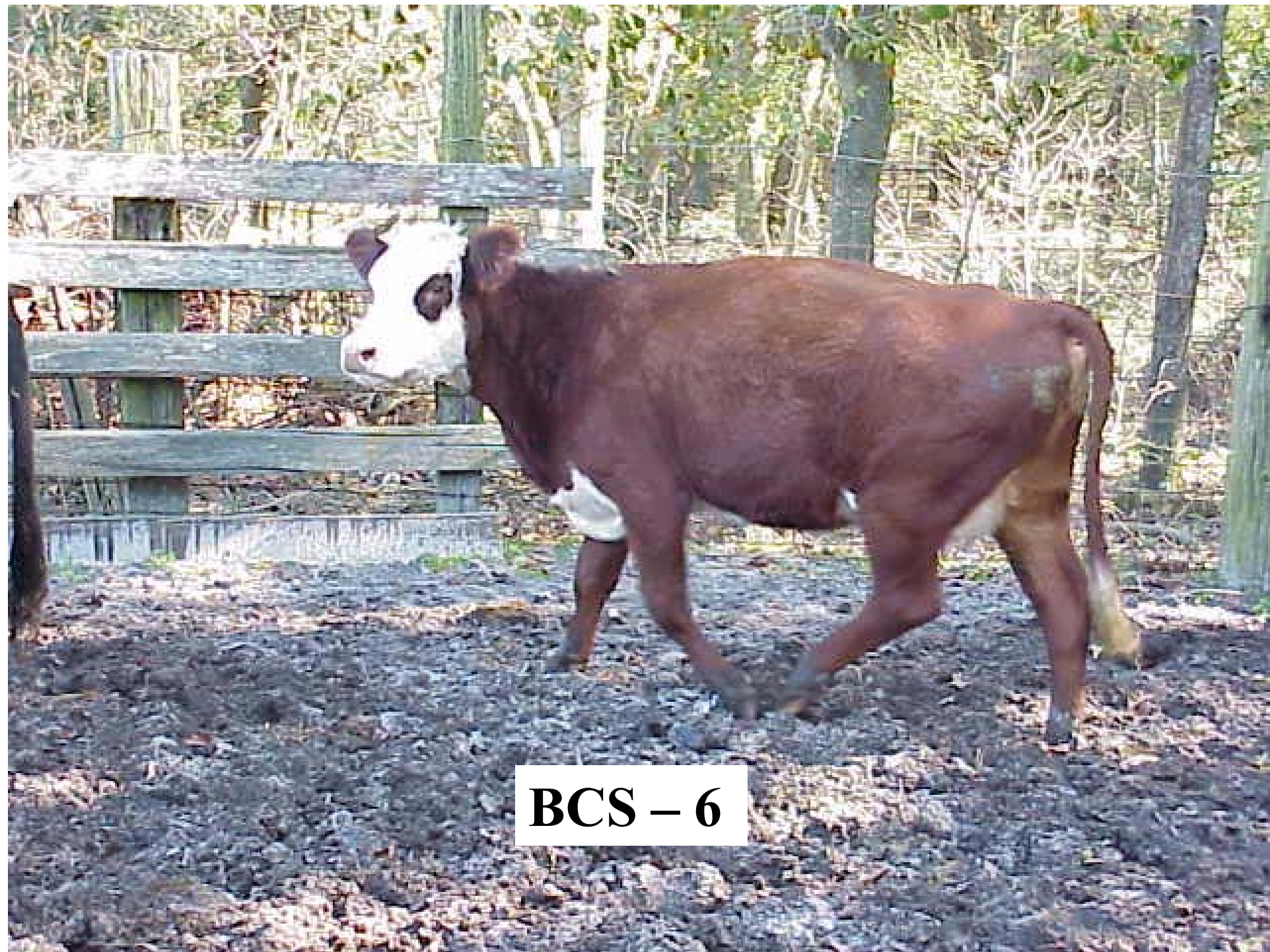




**BCS - 5**



**BCS - 5**



**BCS – 6**



**BCS - 6**



**BCS - 6**



A black cow is shown in profile, standing in a field of dry grass. In the background, there is a red barn with white trim. The cow's body is dark and appears to be covered in a fine layer of hair. The text "BCS - 6" is overlaid on the bottom right of the image.

**BCS - 6**

A photograph of a white cow standing in a field. The cow is facing left and is the central focus of the image. It has a smooth, white coat and a slightly rounded body. In the background, there is a wooden fence and a line of trees with green and yellow leaves, suggesting an autumn setting. Another black cow is partially visible behind the white cow. The ground is covered with dark soil and some dry leaves.

**BCS – 6 -  
Springing**



**BCS – 6**



**BCS – 6**



**BCS – 6**





**BCS – 6**



**BCS – 7**



**BCS - 7**