

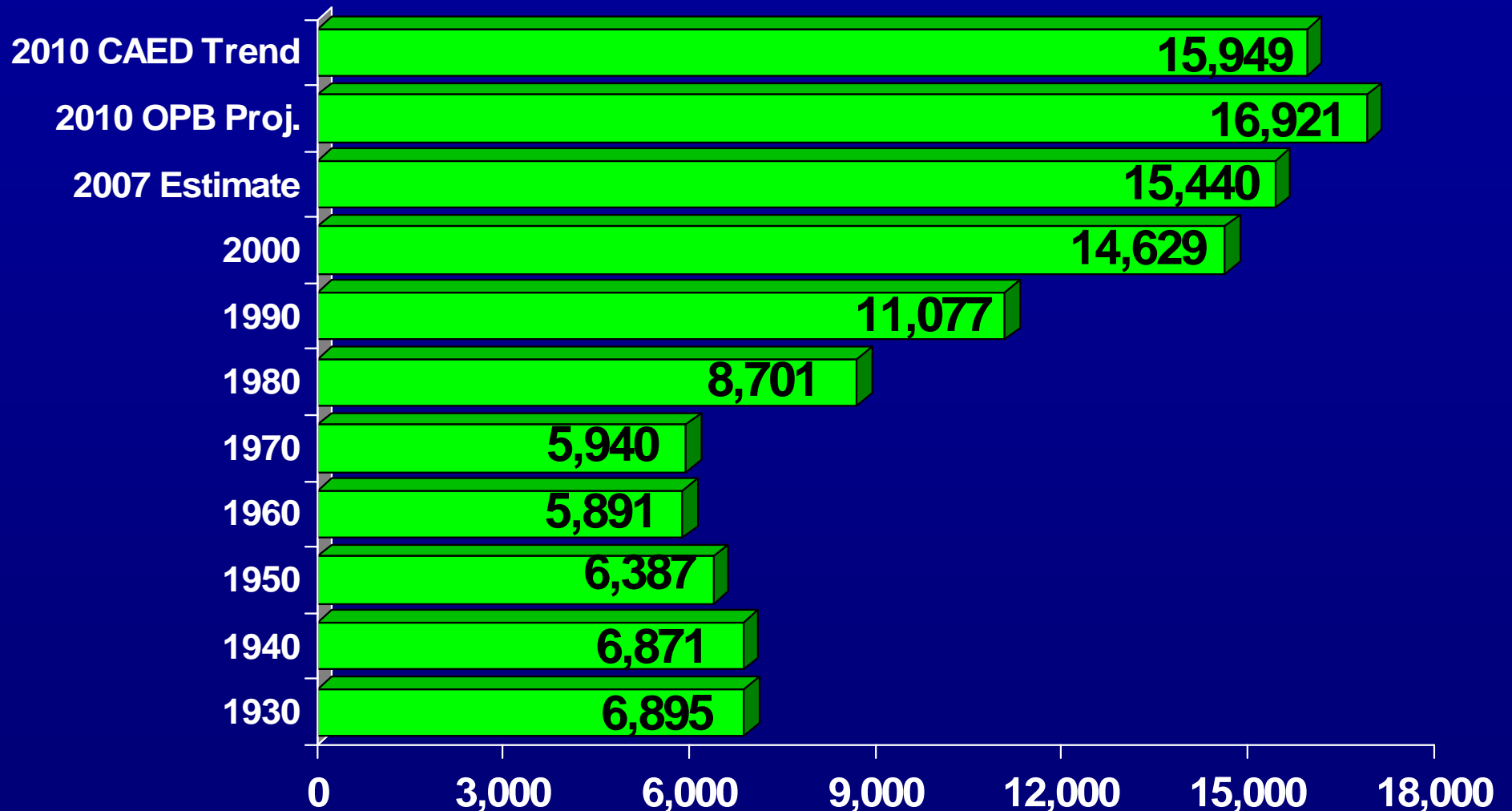
Brantley County Community Profile



**158th in order of
county creation
November 2, 1920**

**Prepared for Brantley County Cooperative Extension
by the Center for Agribusiness and Economic Development
The University of Georgia • Athens, GA**

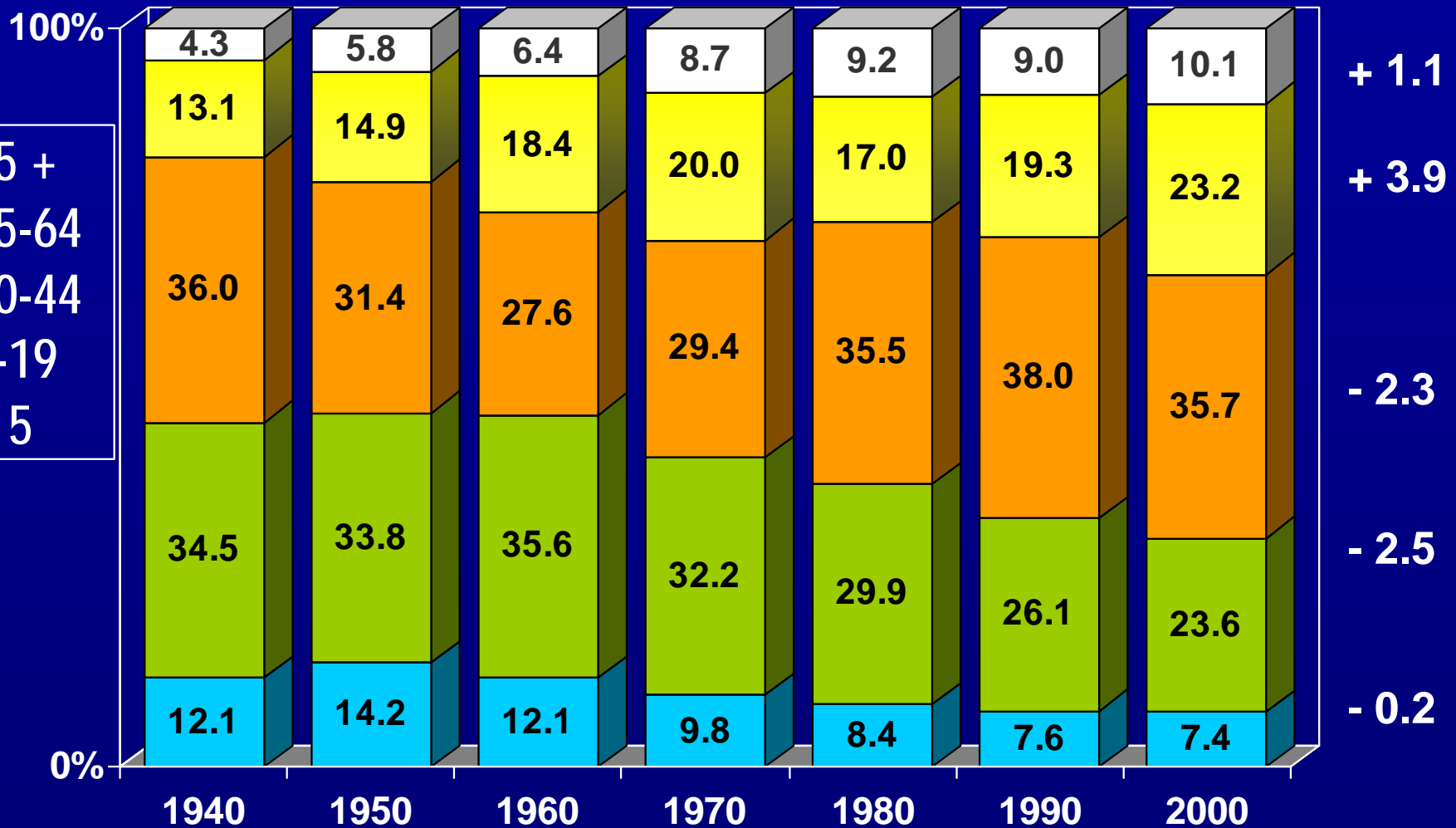
Total Population Brantley County



Primary data sources: U.S. Census Bureau, decennial censuses & estimate; OPB (State Office of Planning & Budget); CAED (Center for Agribusiness and Economic Development) 3/08.

Population Composition by Age Brantley County

Change in
proportion
1990-2000



2006 Estimated Median Age

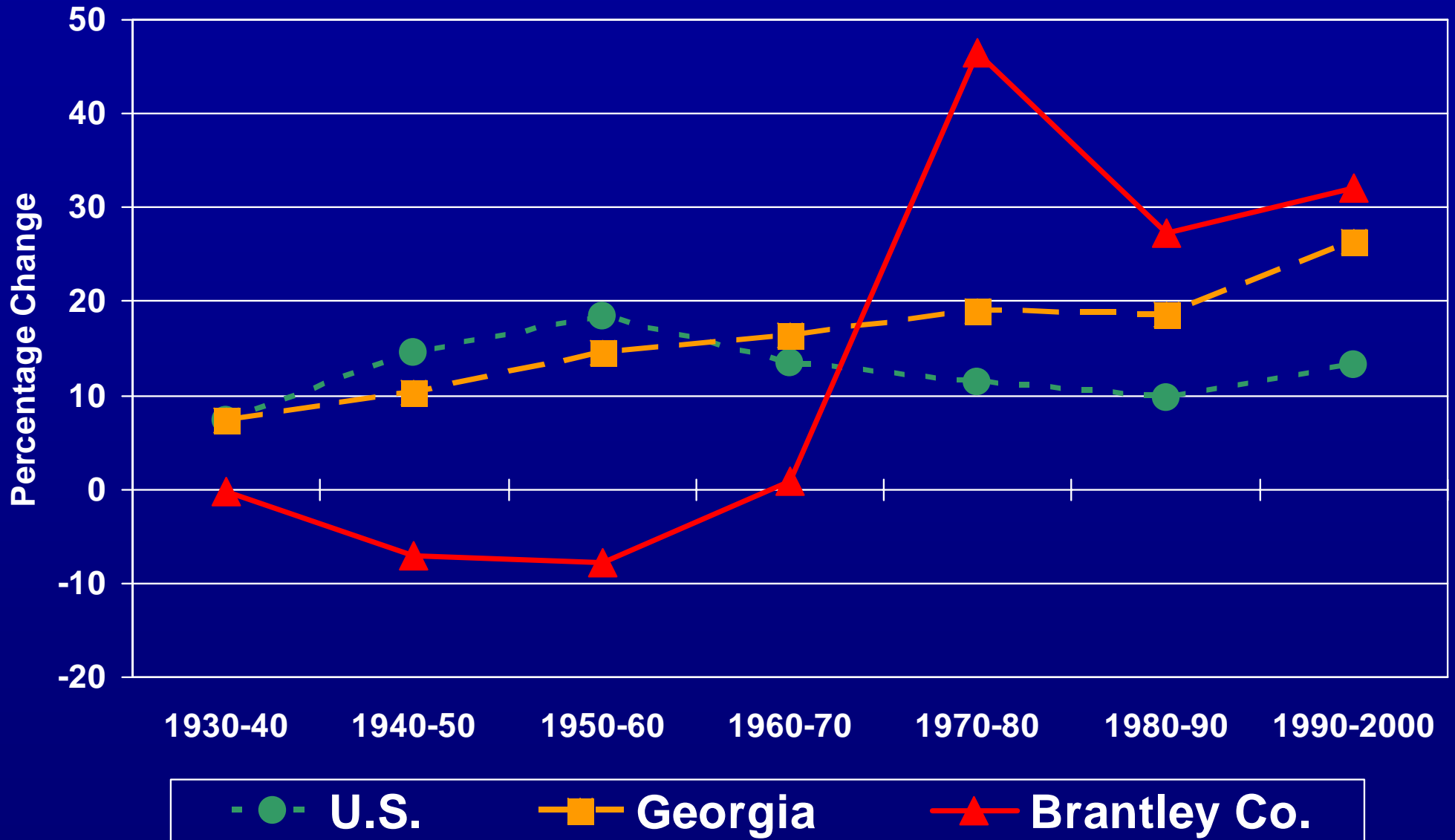
Brantley Co. = 35.9 yrs.

GA = 34.6 yrs.

2007 County Population Comparisons

County	Total	Total Rank	Density per sq.mi. land area	% Chg. 2000-07	Rank of % Chg.
BRANTLEY	15,440	105	34.7	5.5	90
CAMDEN	48,689	41	77.3	11.5	51
CHARLTON	10,609	121	13.6	3.2	101
GLYNN	74,932	30	177.4	10.9	54
PIERCE	17,881	93	52.1	14.4	44
WARE	35,831	51	39.7	0.9	115
WAYNE	29,046	58	45.1	9.3	66

Population Change: 1930-2000



Primary data source: U.S. Census Bureau

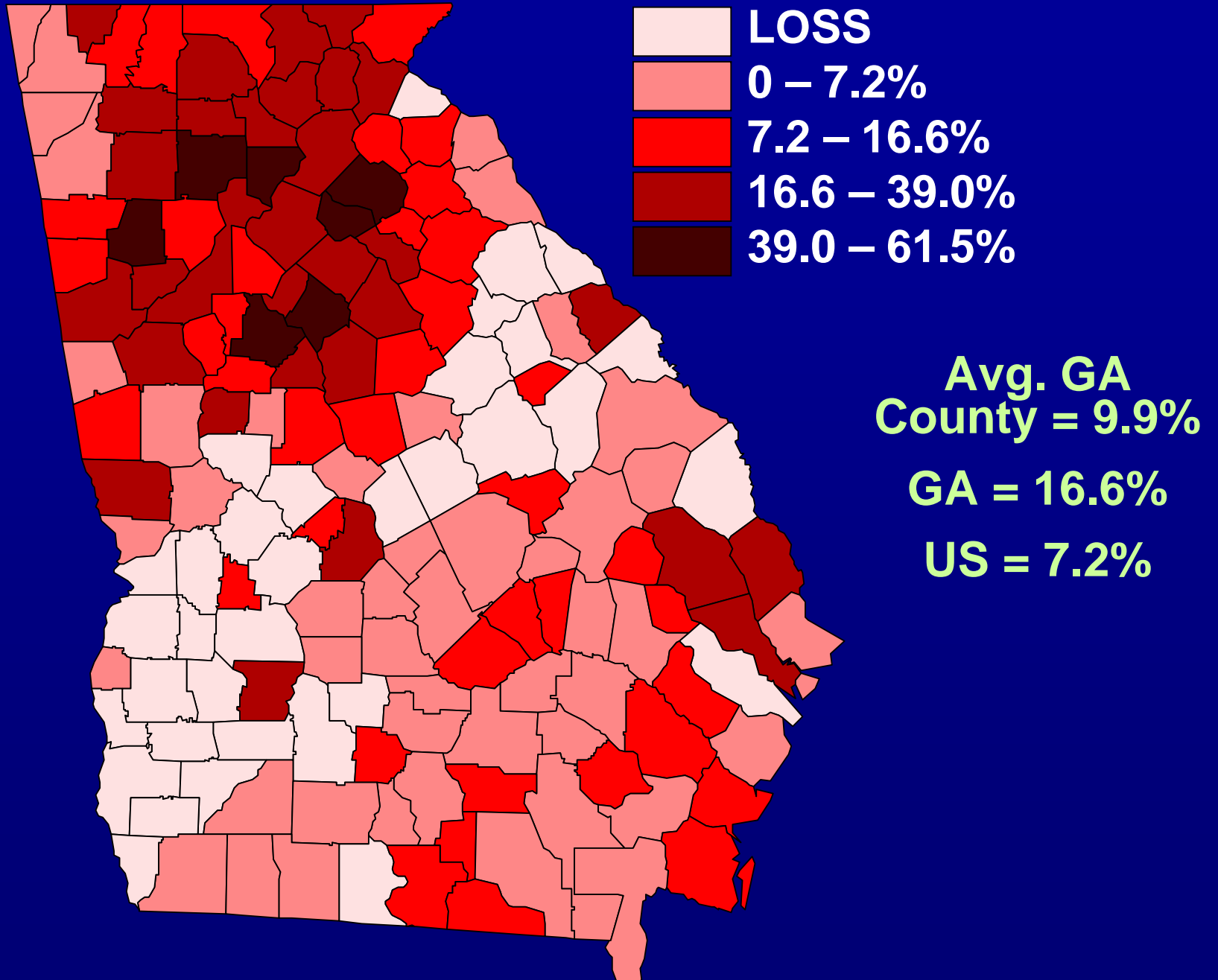
Components of Population Change

Natural Increase & Net Migration*

Area	2000-2007 Numerical Change*	2000-2007 # Natural Increase (Births-Deaths)	2000-2007 # Net Migration	2006-07 1-yr Natural Increase Rate	2006-07 1 yr.Net Migration Rate
BRANTLEY	811	100	768	-0.8	3.1
CAMDEN	5,025	3,788	1,407	11.2	24.1
CHARLTON	327	263	110	5.2	-20.0
GLYNN	7,364	2,068	5,601	4.7	15.5
PIERCE	2,256	605	1,737	6.5	18.4
WARE	337	491	18	1.8	8.0
WAYNE	2,477	1,022	1,558	5.6	9.7
Avg. County	8,540	3,283	4,564	5.3	6.6
GEORGIA	1,357,934	521,982	725,733	8.3	13.3

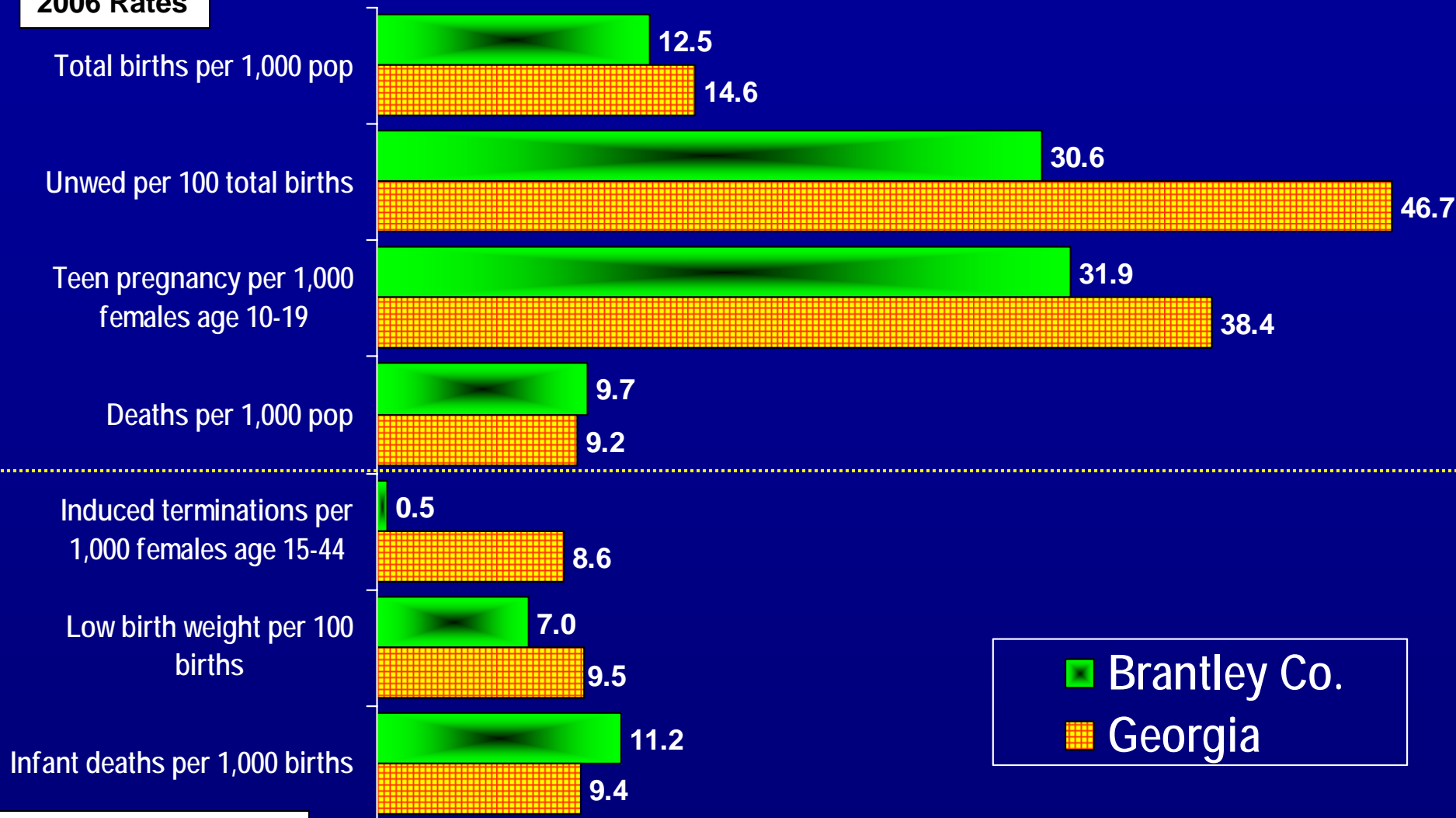
* Numerical change includes "residual" not represented in either NI or NM.

Population Change: 2000-2007



Selected Vital Statistics

2006 Rates

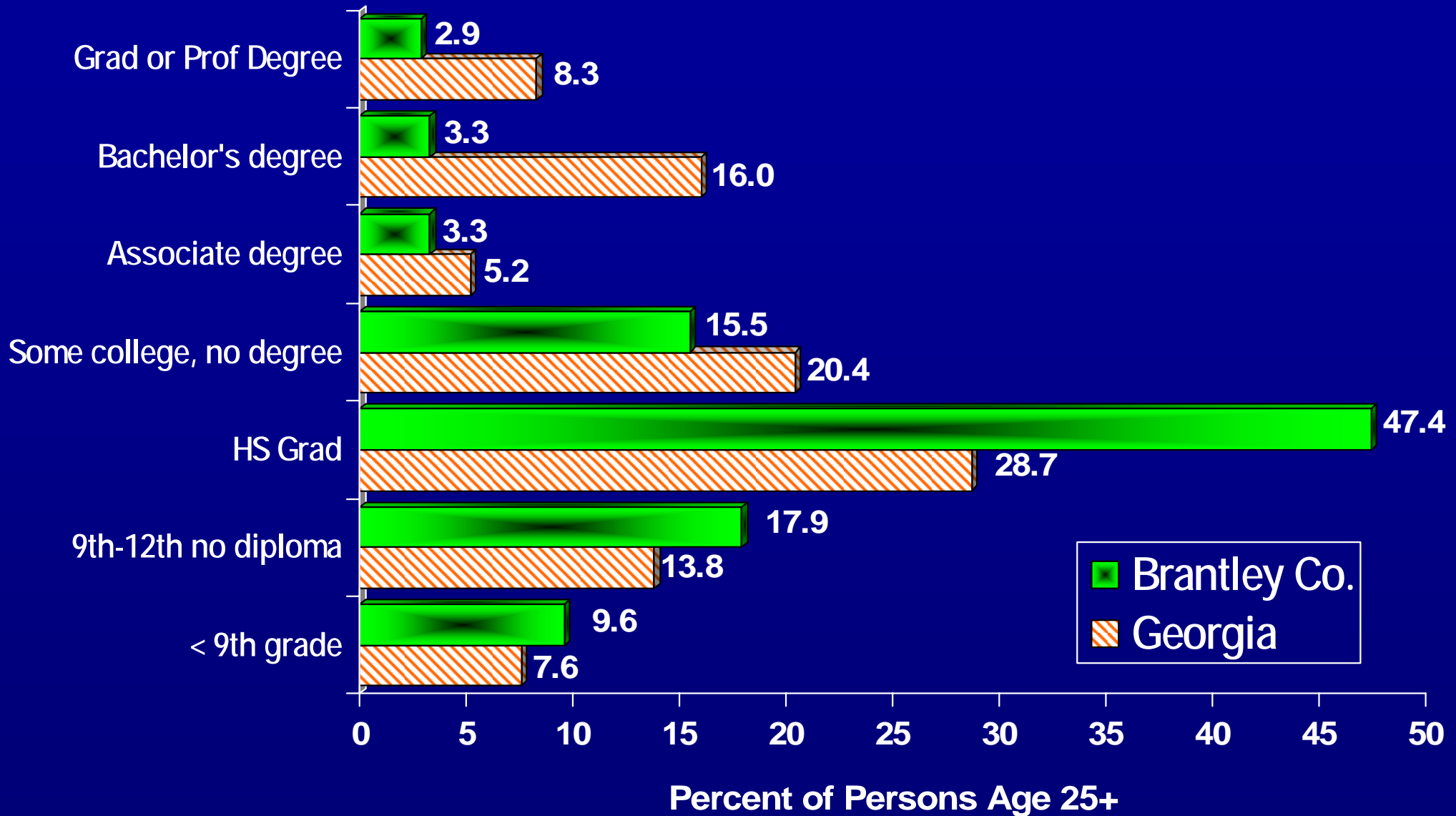


10-yr. rates 1997-2006

2006 Brantley Co. Natality Data
 196 total births, 60 unwed births
 1 induced terminations
 35 teen pregnancies
 12 low birth weight babies

2006 Brantley Co. Mortality Data
 152 total deaths
 1 infant deaths

Highest Level of Educational Attainment: 2000



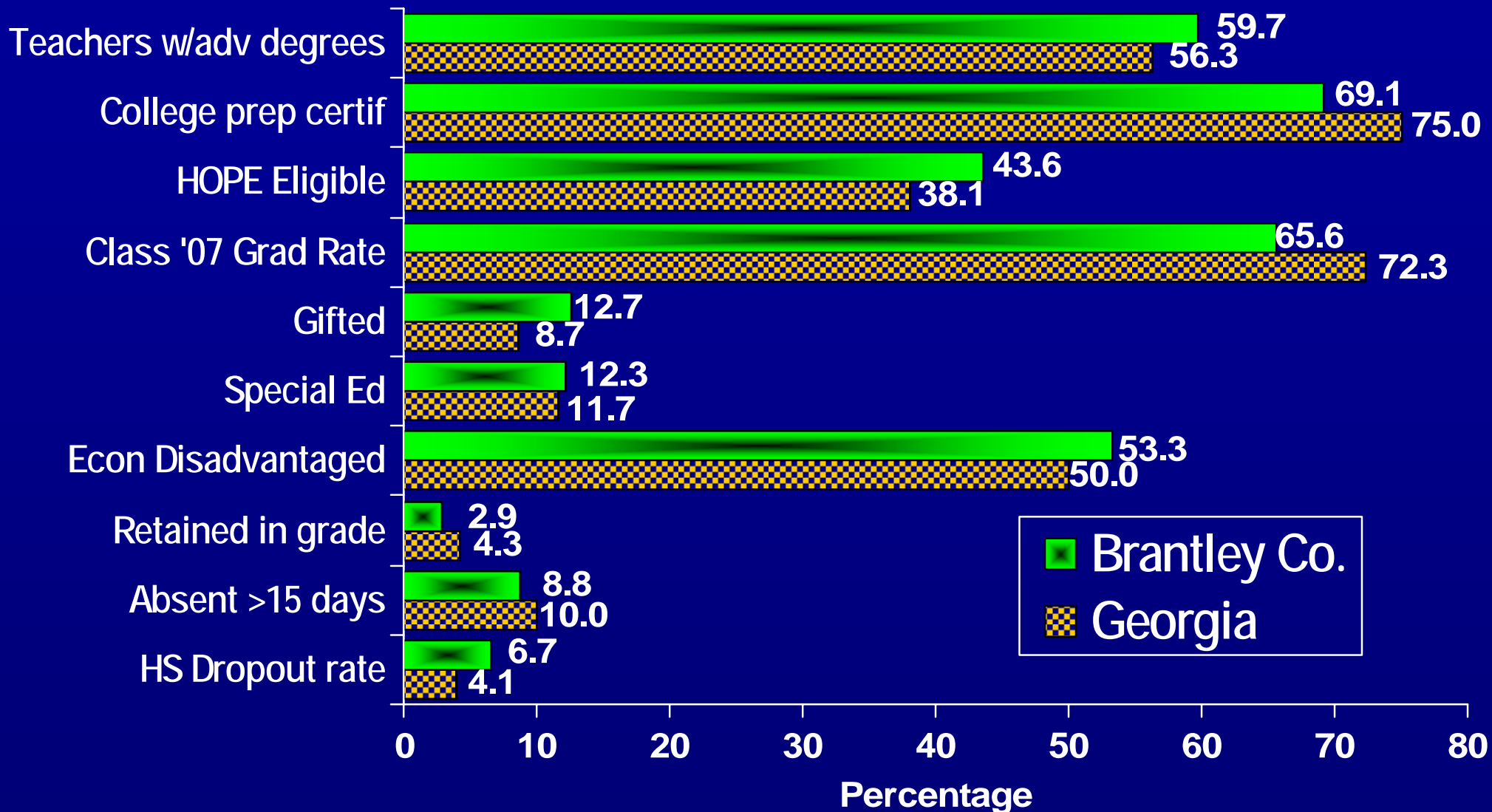
Brantley Co.

Not completing HS = 27.5%

With a bachelor's + degree = 6.2%

Primary data source: U.S. Census Bureau

Selected Public School Statistics School Year 2006-07



Brantley Co.

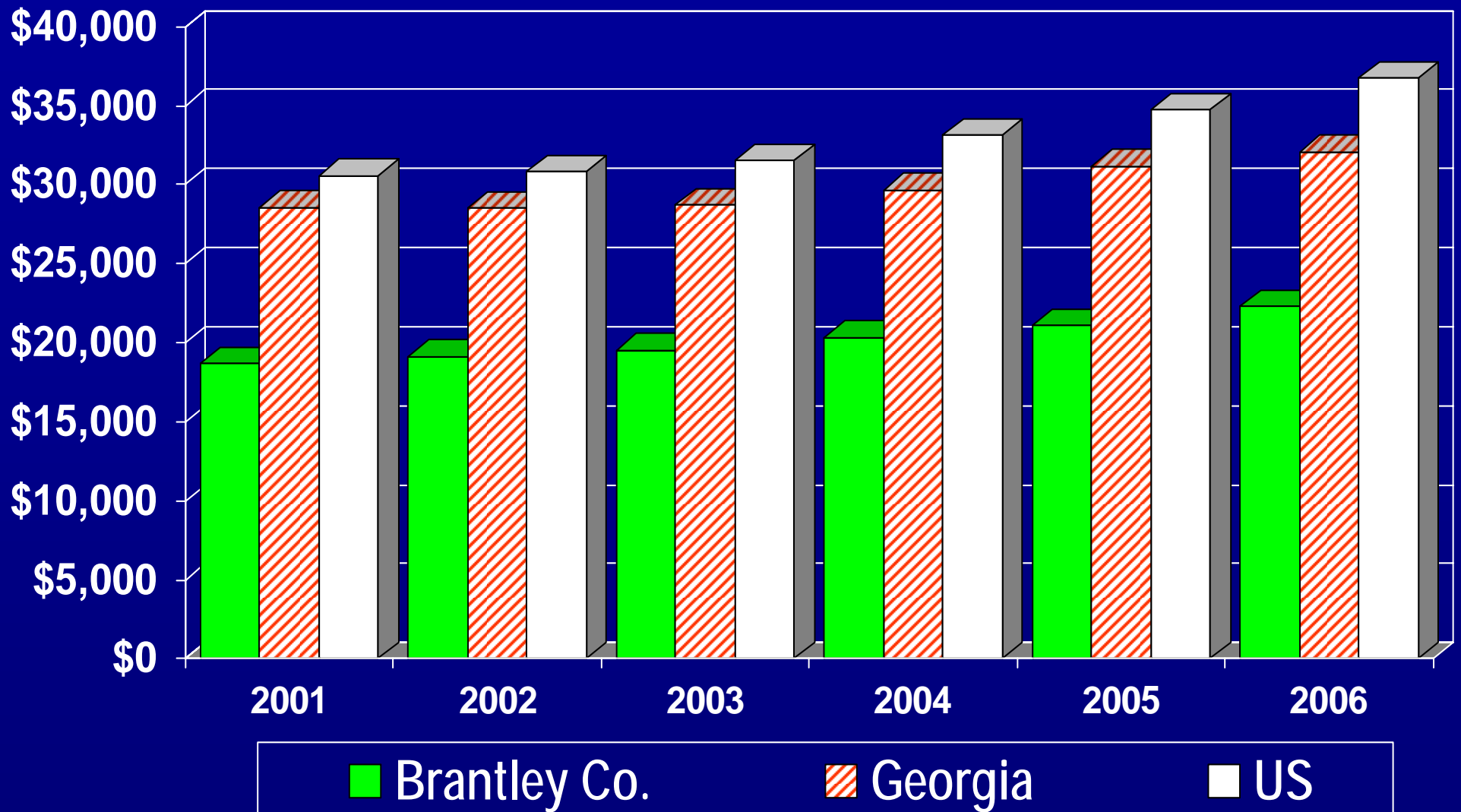
K12 enrollment = 3,365

HS dropouts = 68

General Fund Expenditures per FTE = \$7,268

Primary data source:
Governor's Office of Student Achievement

Per Capita Income: 2001-2006

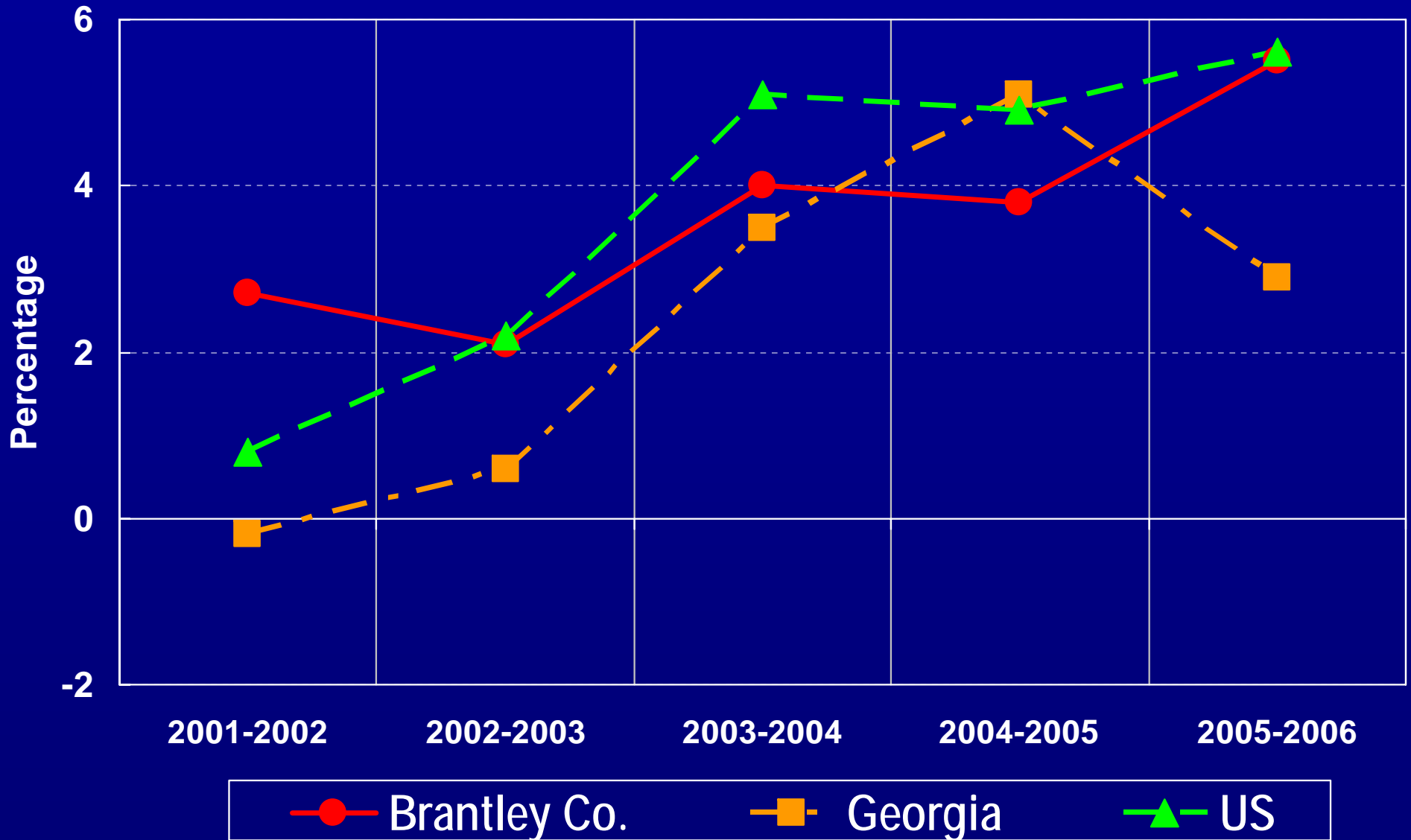


2006 PCI
Brantley Co. = \$22,281

Georgia = \$32,095
US = \$36,714

Per Capita Income: 2001-2006

Percentage Change

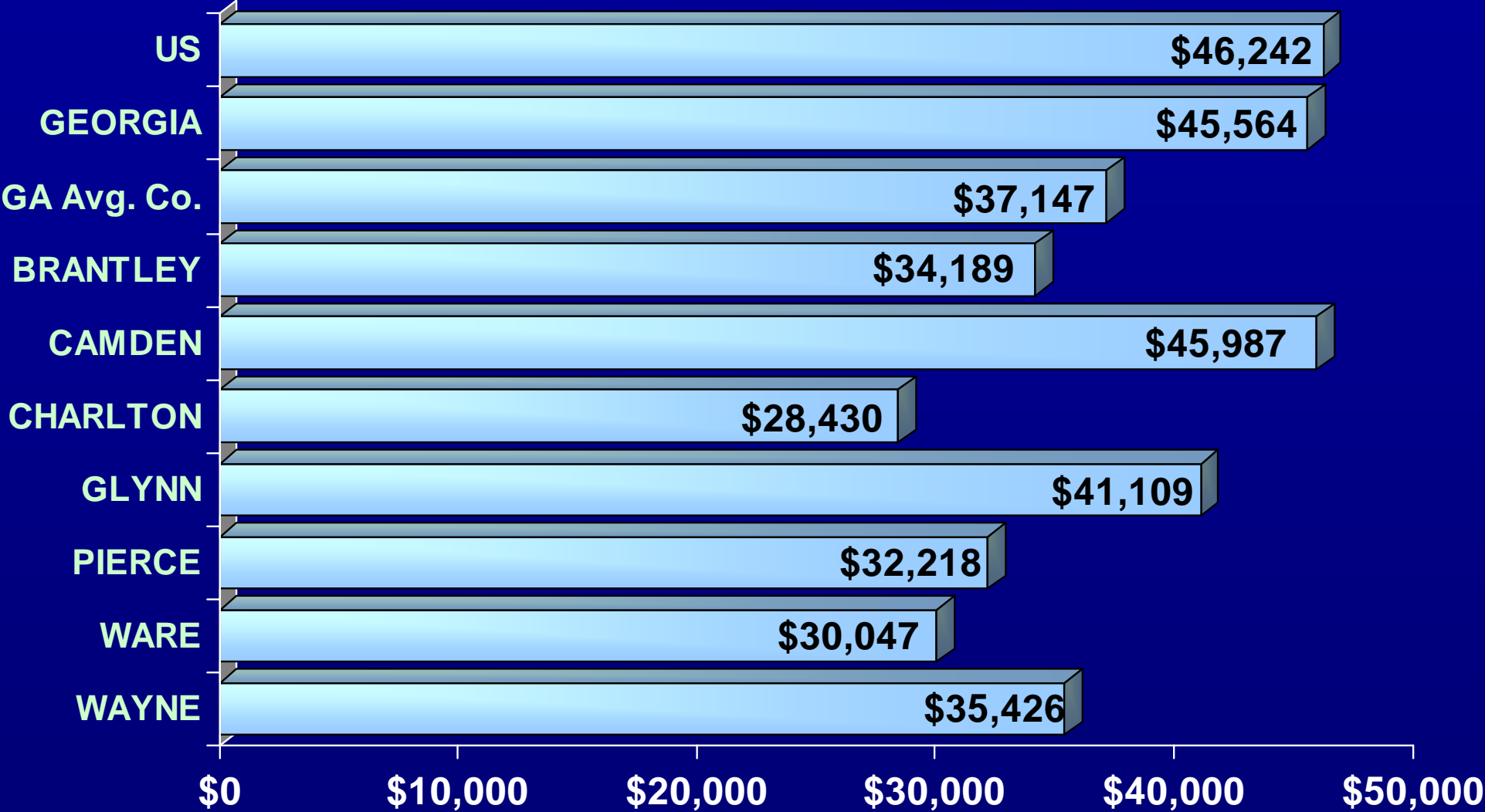


Per Capita Income: 2006

County	PCI	Rank of PCI	% PCI of GA Total	% Change in PCI 2001-2006
BRANTLEY	\$22,281	116	69.4	19.4
CAMDEN	\$27,019	41	84.2	24.2
CHARLTON	\$19,221	153	59.9	22.0
GLYNN	\$36,549	6	113.9	24.3
PIERCE	\$23,001	103	71.7	10.4
WARE	\$23,478	98	73.2	15.5
WAYNE	\$24,393	88	76.0	21.7
GA Avg. Co.	\$25,483	--	79.4	14.5

Median Household Income

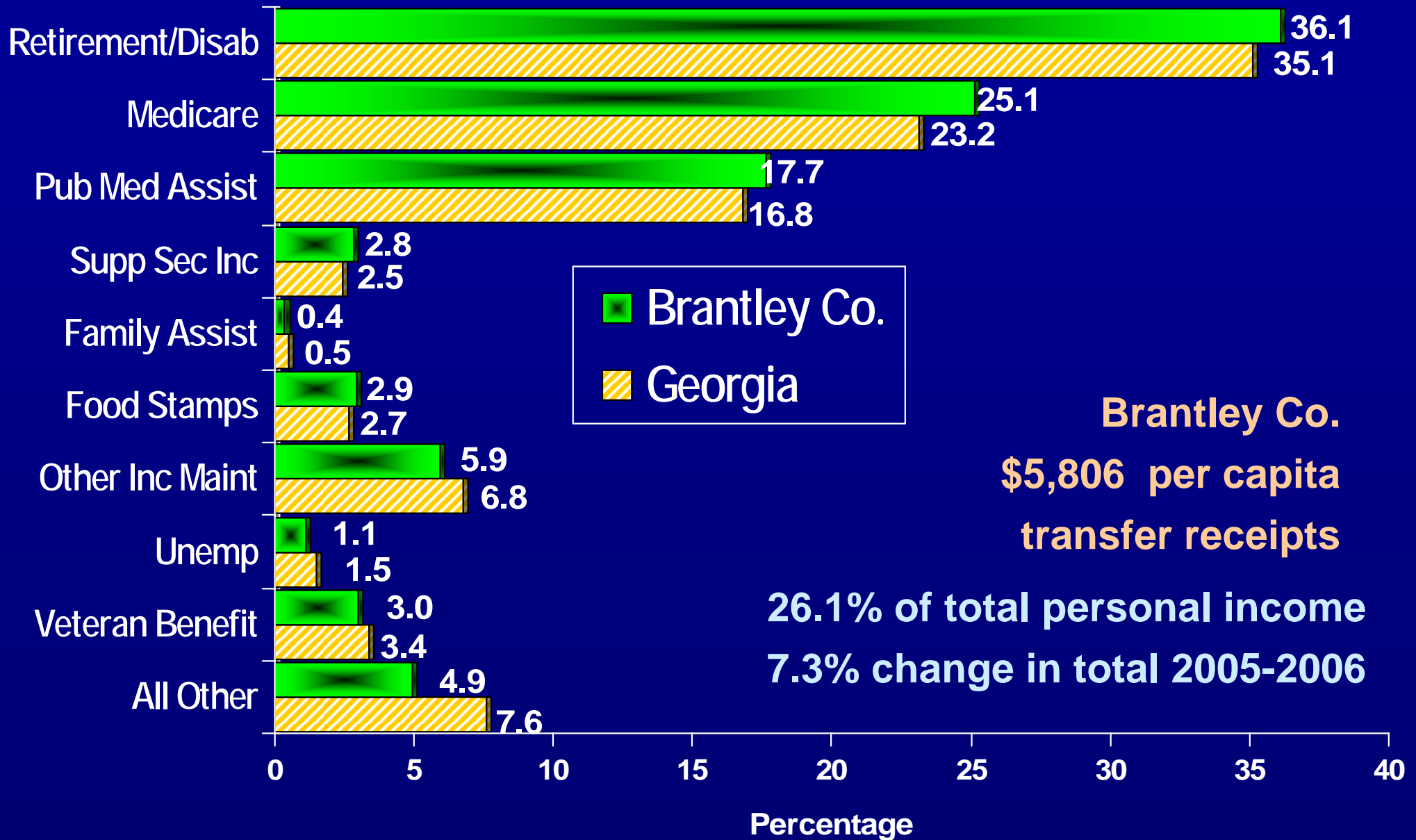
2005 Model-Based Estimates



Primary data source: U. S. Census Bureau (1/08)

Transfer Receipts: 2006

Brantley Co. Total = \$89,416,000

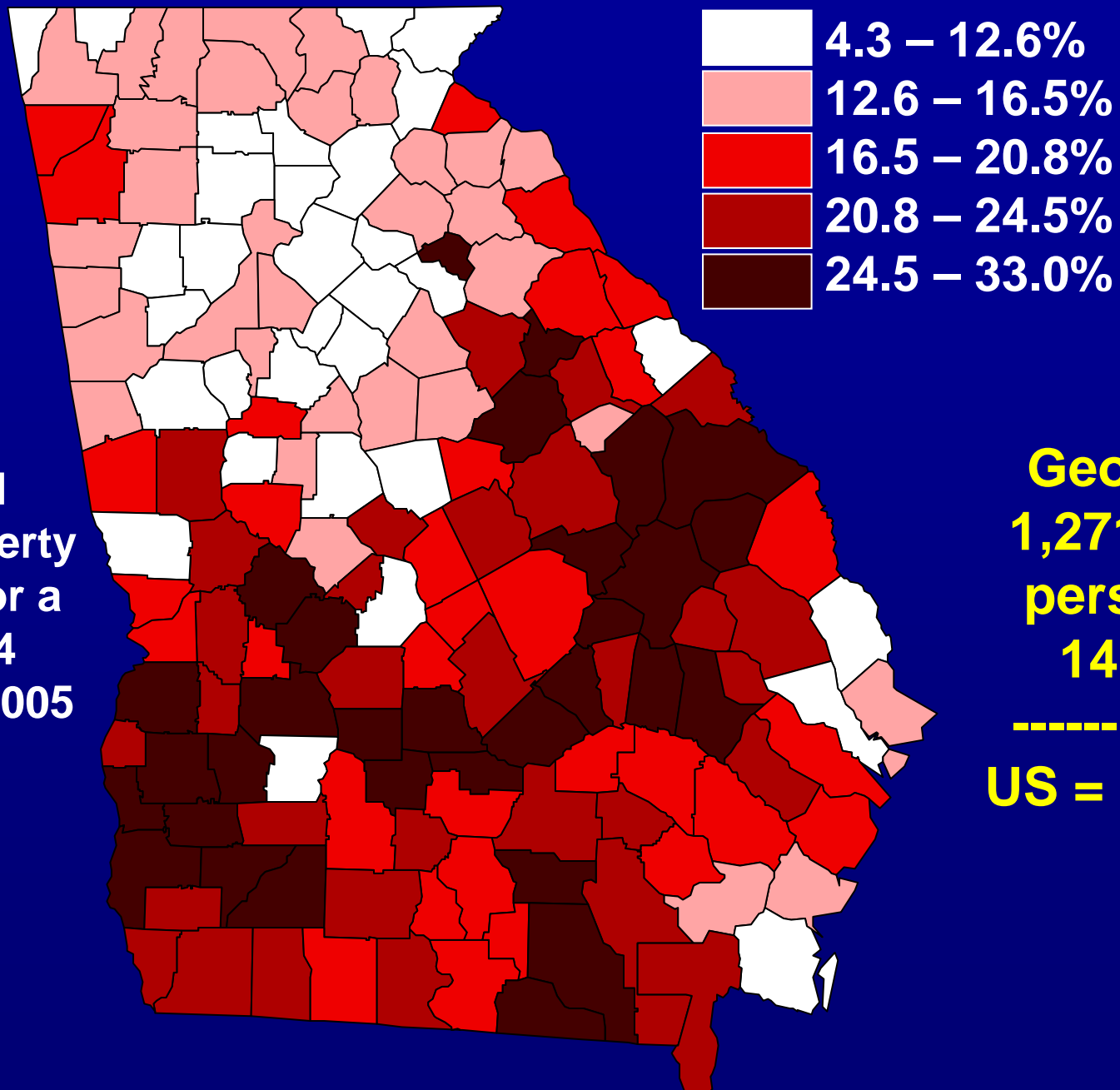


Persons Living Below Poverty Level

2005 Model-Based Estimates

County	# of Persons	% of all Persons	Rank of %
BRANTLEY	2,307	15.0	52
CAMDEN	4,830	10.8	20
CHARLTON	2,298	24.4	124
GLYNN	11,244	16.0	60
PIERCE	3,448	20.4	95
WARE	7,109	21.5	106
WAYNE	5,095	19.6	83
GA Avg. Co.	7,996	18.7	--

Persons Living Below the Poverty Level 2005 Model-Based Estimates

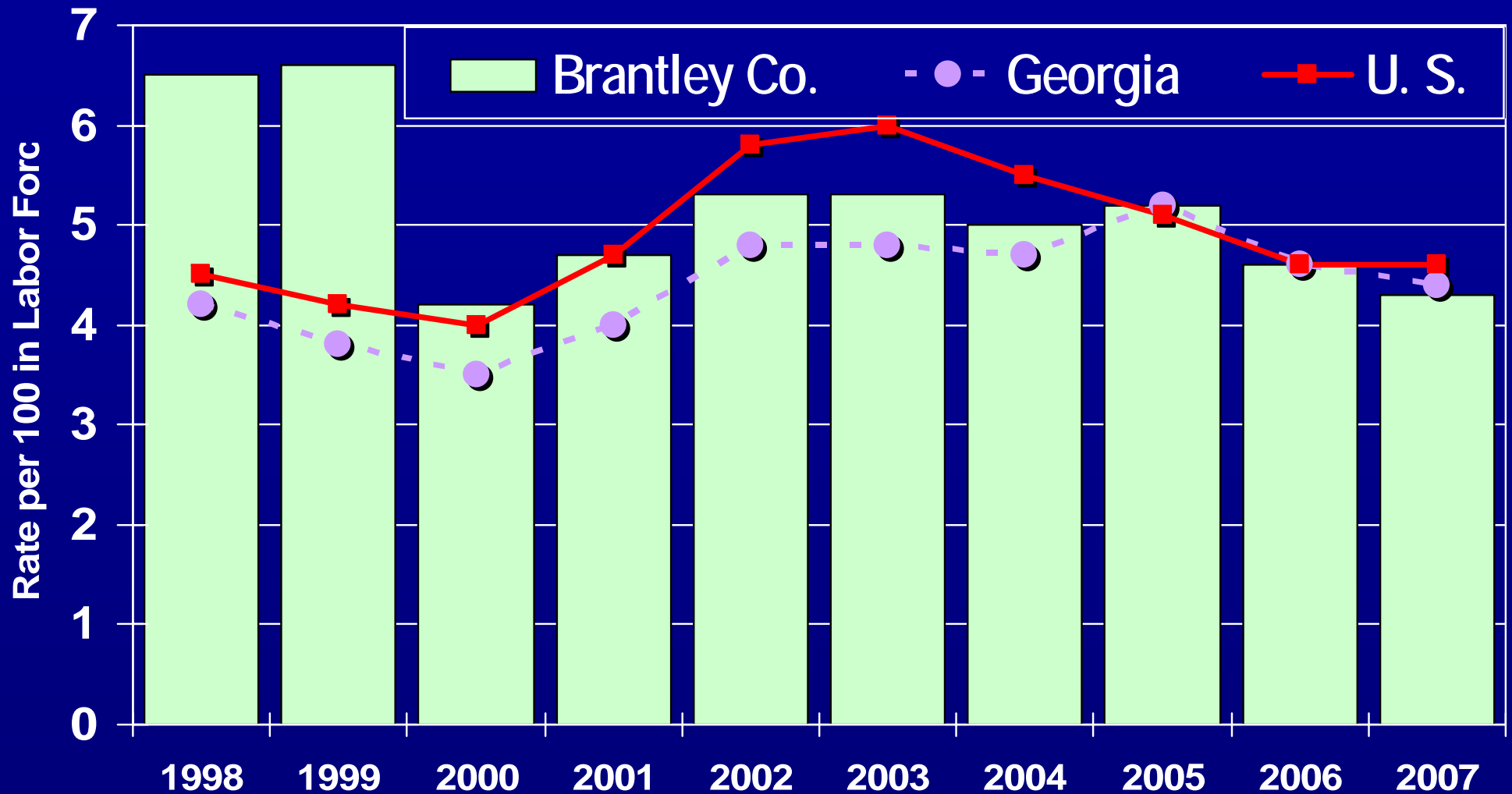


Weighted
average poverty
threshold for a
family of 4
persons in 2005
= \$19,971

Georgia
1,271,409
persons
14.5%

US = 13.3%

Unemployment Rates



2007 Rates

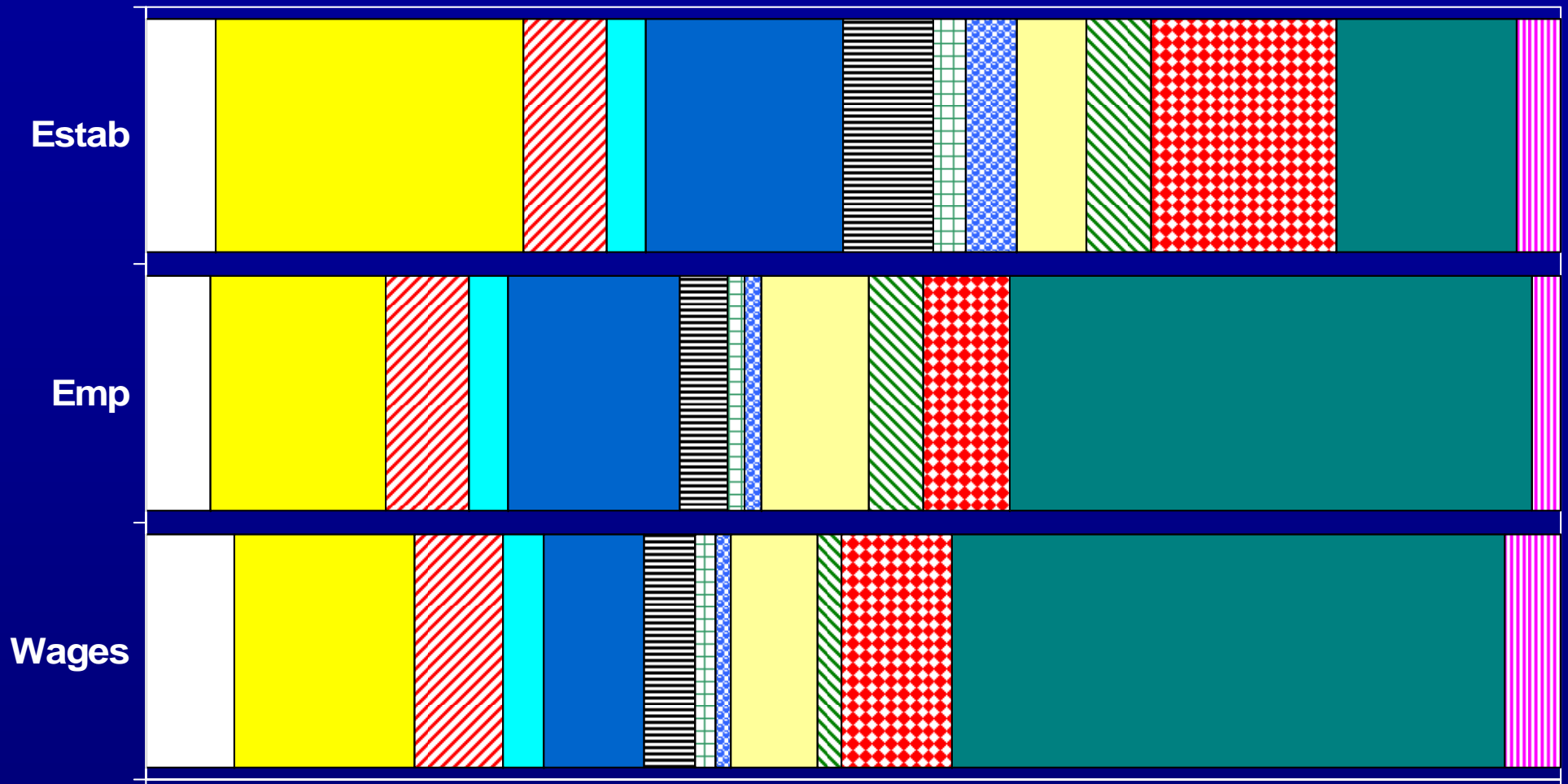
Brantley Co. = 4.3

GA = 4.4

US = 4.6

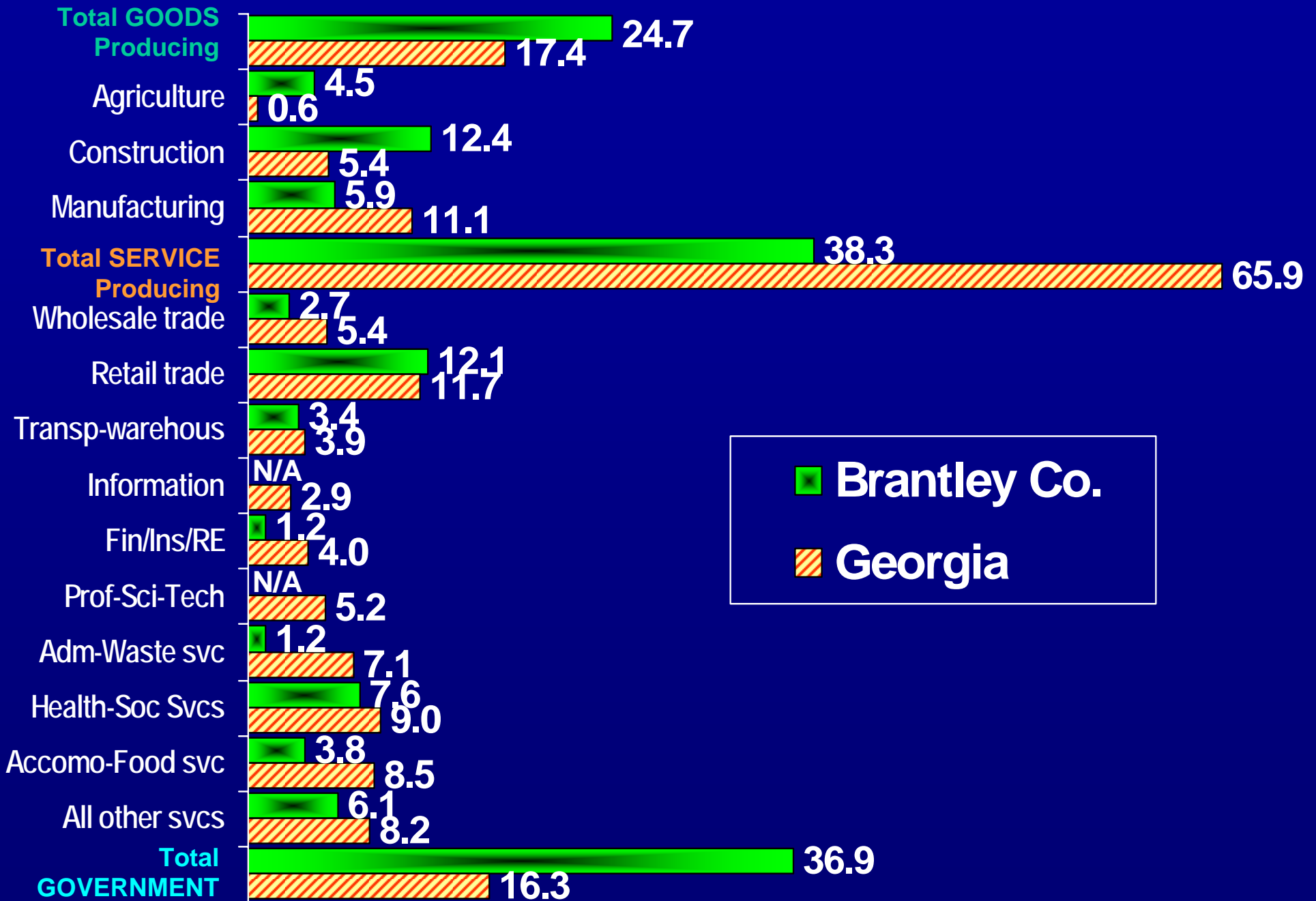
Avg. GA County = 4.9

Business Establishments, Employment and Wages Brantley County 2006 Annual Averages, % of Total



- Agriculture
- Construction
- Manufacturing
- Wholesale trade
- Retail trade
- Transp-warehouse
- Finance/Insur
- Admin-waste svc
- Health svc
- Accom/Food Svc
- All other svc
- Govt
- All Other

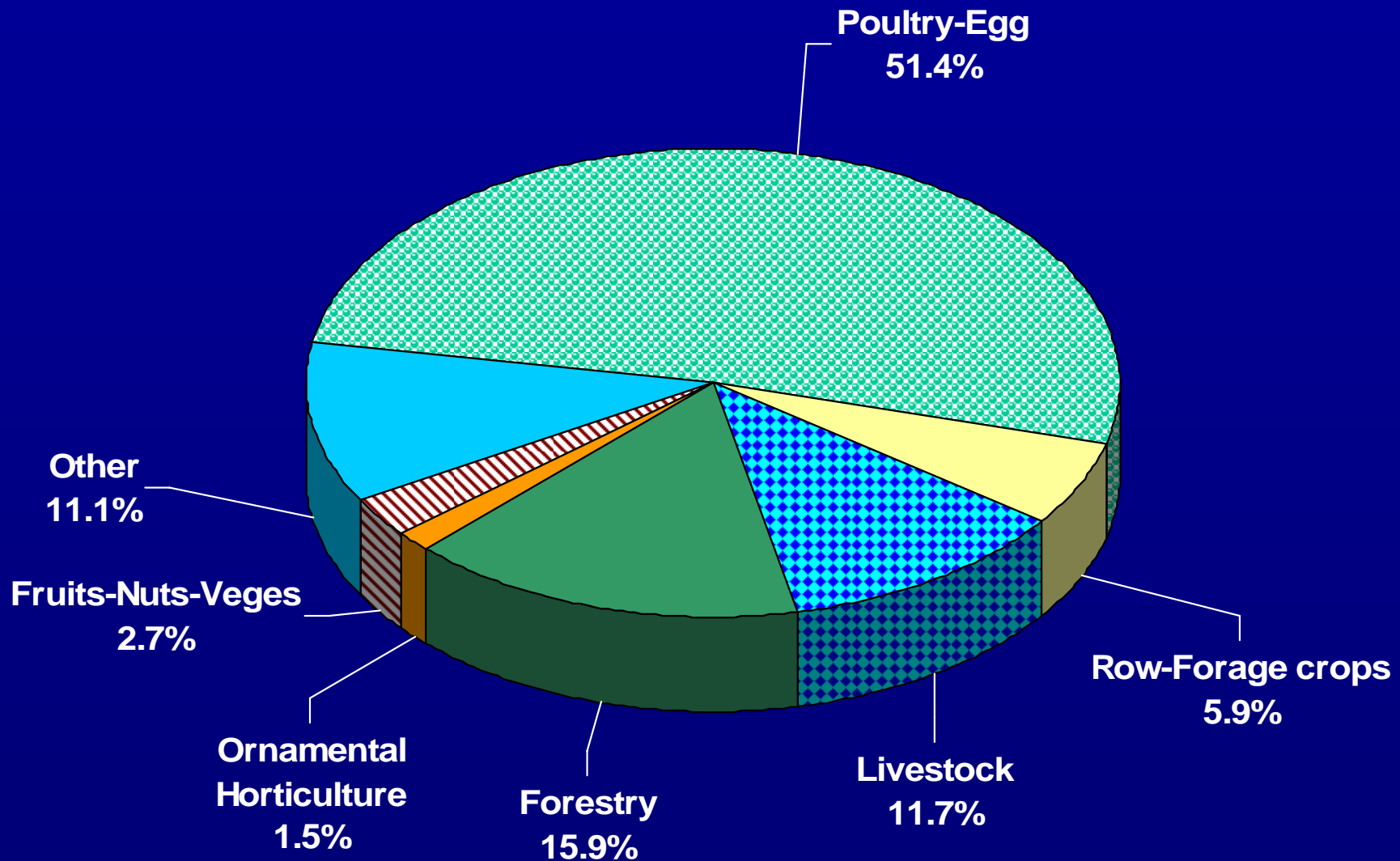
Employment Comparisons by Industry: 2006



Primary data source: GA Dept. of Labor

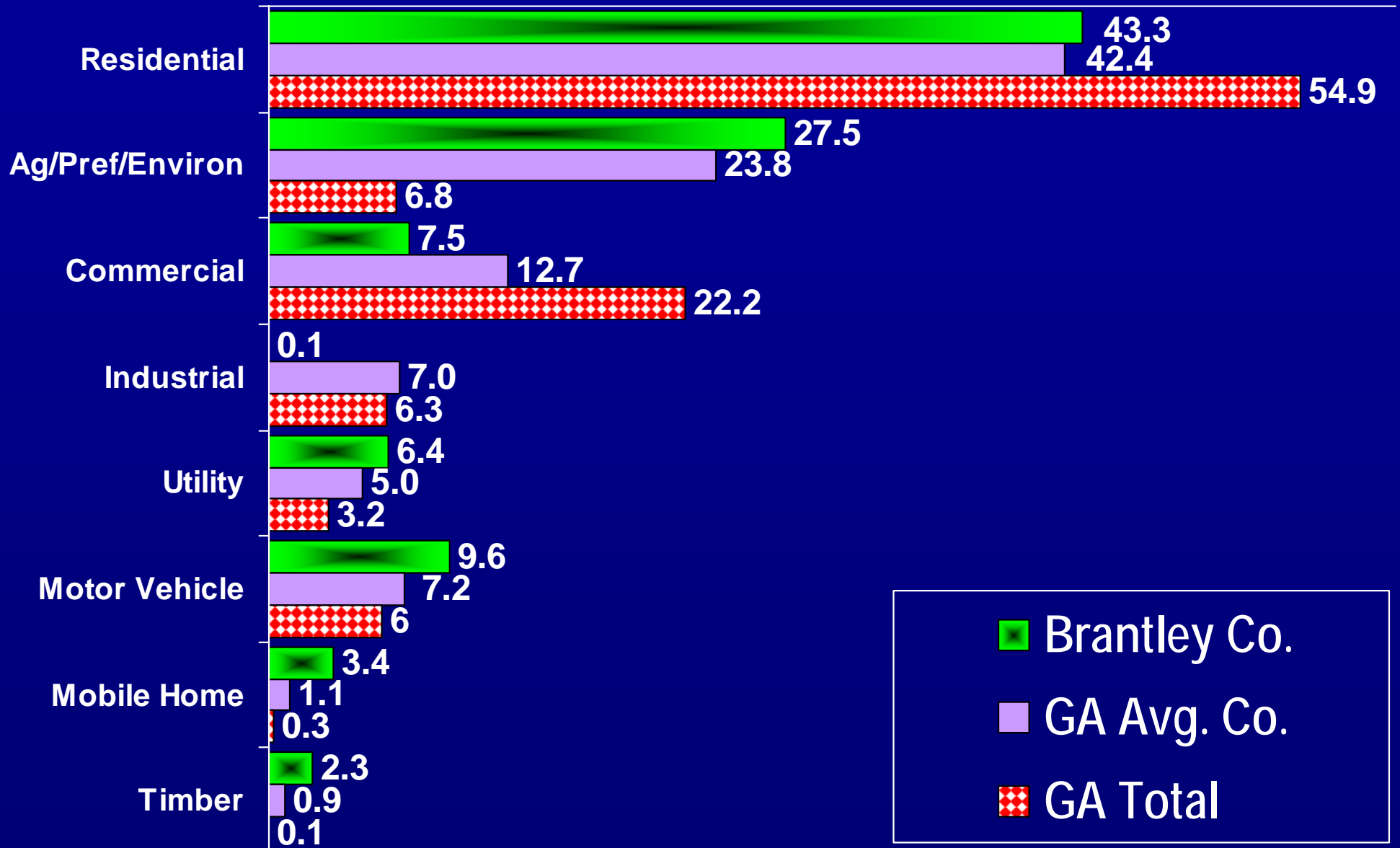
Farm Gate Value by Commodity Group: 2007

Brantley Co. Total Value = \$23,306,481



Components of Gross Property Tax Digest: 2007

Brantley Co. Gross Digest (40% Value) = \$352,027,047



Primary data source: GA Dept. of Revenue

County Property Tax Digest Comparisons: 2007

County	% Residential	% Agricultural	% Commercial	% Industrial	% Utility	% Motor Veh	% Mobile Home	% Timber
BRANTLEY	43.3	27.5	7.5	0.1	6.4	9.6	3.4	2.3
CAMDEN	73.4	4.7	11.7	1.4	2.2	5.4	0.6	0.6
CHARLTON	24.8	45.9	5.8	7.2	7.3	4.9	1.7	2.5
GLYNN	74.6	0.4	13.4	6.2	1.5	3.5	0.2	0.1
PIERCE	43.1	24.0	9.7	5.9	3.8	10.5	2.2	0.9
WARE	45.1	6.4	22.0	3.3	10.4	9.6	1.6	1.6
WAYNE	35.0	15.3	14.8	18.3	4.4	9.9	0.8	1.5
Avg. GA Co.	42.4	23.8	12.7	7.0	5.0	7.2	1.1	0.9

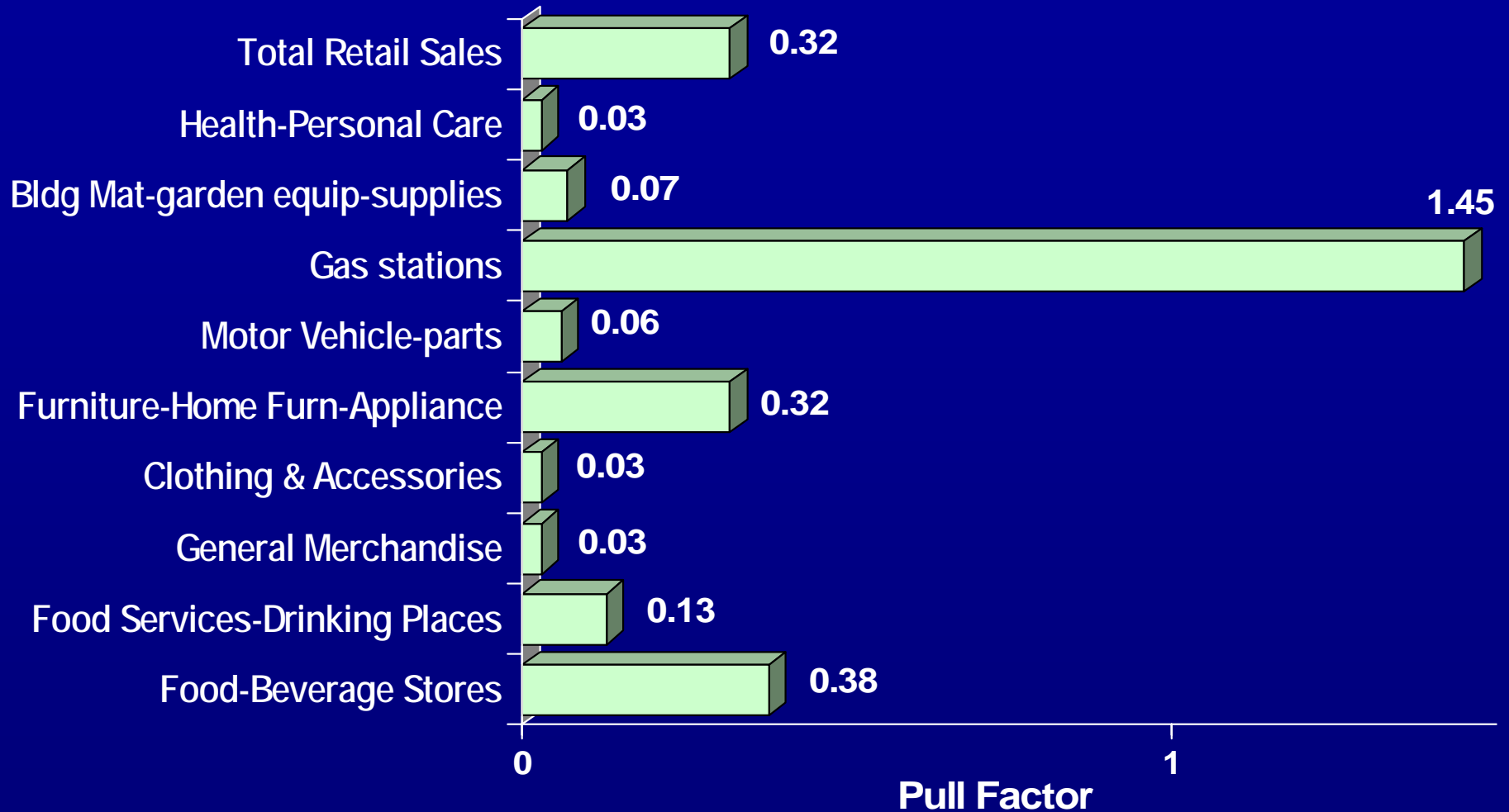
Millage Rates, Taxes Levied, & Sales Tax Rate

County	'07 County-wide Millage*	'07 School Millage*	'07 Taxes Levied* (\$000)	Sales Tax Rate as of 4/08	LOST Type* as of 4/08
BRANTLEY	31.868	13.000	\$10,366	7	LSE
CAMDEN	27.000	14.750	\$48,181	6	LS
CHARLTON	32.450	14.190	\$10,446	7	LSE
GLYNN	21.498	15.230	\$116,465	7	LSE
PIERCE	22.040	15.500	\$9,392	7	LSE
WARE	31.844	15.045	\$23,773	7	LSE
WAYNE	39.750	20.000	\$22,870	6	LS

*Countywide Includes .250 state millage. School includes bonds, if any. Taxes levied, but not necessarily collected. L=Local Option Sales Tax, S=Special Purpose, E=Educational

Retail Sales Analysis: 2007

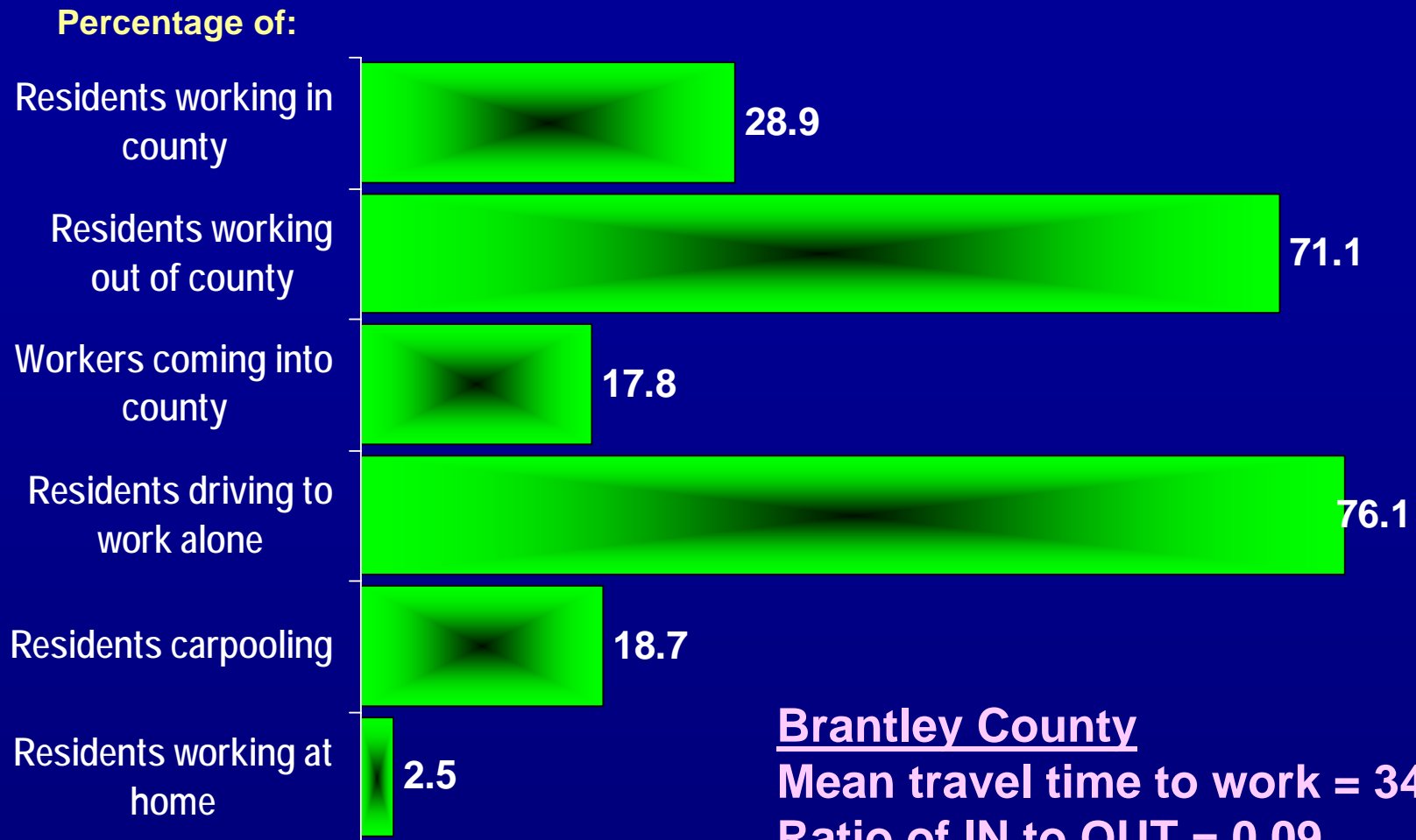
Brantley Co. Total Retail Sales = \$59,368,000



A “pull factor” of 1.0 means that the county’s sales are what would be expected based upon the number of residents and their relative wealth.

Primary data sources: “Demographics USA, County Edition, 2007;” pull factor calculations by Center for Agribusiness and Economic Development.

Commuting to Work: 2000



Brantley County

Mean travel time to work = 34.0 min.

Ratio of IN to OUT = 0.09

Resident workers 16+ = 6,080

Residents working in county = 1,759

Residents working out of county = 4,321

Total working in county = 2,139

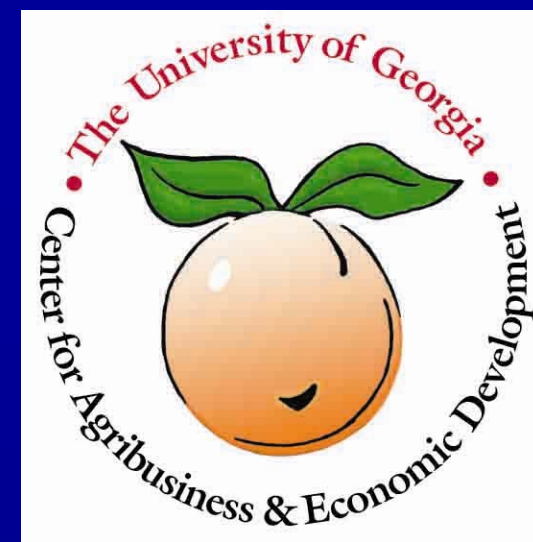
Workers commuting into county = 380

*This study was developed to assist
community leadership with their
future planning and decision making.*

Special Area Report

0824

August, 2008



***Prepared for Brantley County Cooperative Extension
by Susan R. Boatright***

Center for Agribusiness and Economic Development

College of Agricultural and Environmental Sciences

The University of Georgia • Athens, GA

Georgia Cooperative Extension

706-542-0760 • 706-542-8938

***To learn more about your county, click on
“Georgia Statistics System” at our website:***

www.caed.uga.edu