

# thegolden mean

"A standard proportion found throughout art and nature."

## 01 Cover Story

1, Eugene Odum

## 02 Credits

2, About the *Golden Mean* Newsletter  
2, Credits

## 02 Alumni News (1960s to 2000s)

8, Friends

## 09 Curriculum

9, Ossabaw Course Merges Science and Art  
9, Costa Rica Maymester Program  
9, Executive MLA  
10, Tanyard Creek Stream Restoration Class

## 16 Dean's Corner

16, New Organizational Chart for the College

## 13 Environmental Ethics Program

13, Southern Nature Writers

## 11 Faculty News

12, New Hires  
14, Richard Westmacott Retires  
15, A Tribute to Darrel Morrison

## 12 Gallery

12, 2001-2002 Exhibits  
13, Upcoming Exhibits  
23, Metal Menagerie

## 30 Infrastructure

30, UGA Purchases Costa Rican Research Station

## 18 In Memoriam

18, Whitney Mason Boyer, BLA Student  
18, Ted Elliott, Ecosystem Scientist  
18, Robert Marvin, Landscape Architect  
1, Eugene Odum, Founder of the Institute of Ecology

## 19 In the News

20, The Altamaha: Georgia's Watershed  
20, Coral Killer Discovered

## 21 Public Service & Outreach

21, Slice Through Georgia--441 Corridor Project  
21, Forum 2002  
21, New Contract  
22, Working Hard in Plains  
22, Your Town: Designing Its Future  
22, Plains Inn and Antiques  
22, Service Learning in Croatia  
23, UGA Helps Ecuador Protect Environment

## 24 Publications

## 25 Social

25, Spring Fling  
25, Sigma Pi Kappa Barbecue

## 26 Staff News

26, New Hires  
26, Retirements

## 27 Student News

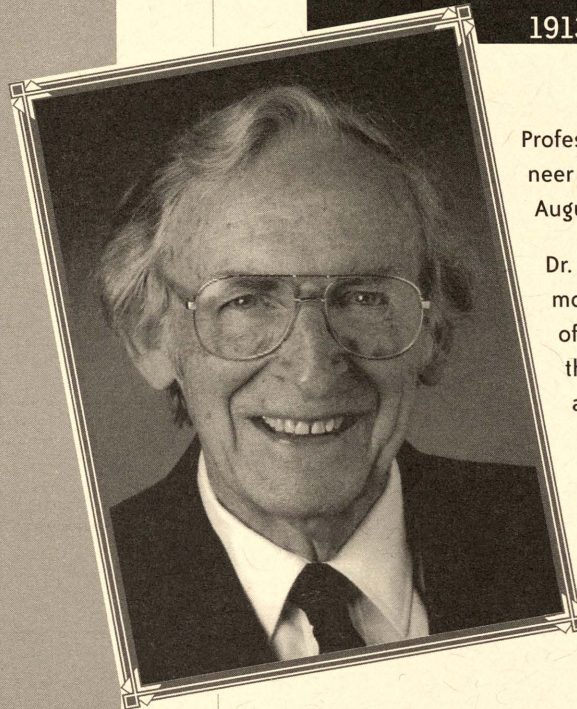
28, Family Updates  
29, Institute of Ecology Graduate Student Symposium

## 24 Upcoming Events

24, State of the School Address  
24, ASLA Annual Meeting  
24, LARE Review  
24, MHP Celebrates 12th Anniversary

# EUGENE ODUM

1913 - 2002



Professor Emeritus **Eugene P. Odum**, 88, pioneer of ecosystem ecology, died Saturday, August 10, 2002, at his Athens home.

Dr. Odum, widely regarded as "the father of modern ecology," founded the University of Georgia's Institute of Ecology as well as the Marine Institute on Sapelo Island. He also wrote "Fundamentals of Ecology," one of the first textbooks on the subject, which he had just recently finished revising with **Dr. Gary Barrett**.

In that book, first published in 1953 and still used in colleges, Dr. Odum argued that the earth is a series of interlocking environmental communities, or ecosystems.

"It was the first book that begins discussing the entire ecosystem and then goes down to the bottom," said Betty Jean Craig in the *Athens Banner Herald*. Craig wrote a biography of Odum, "Eugene Odum: Ecosystem Ecologist and Environmentalist," published in 2001 by the University of Georgia Press.

Dr. Odum's many honors include the Crafoord Prize of the Royal Swedish Academy, considered the equivalent of the Nobel Prize, which is not awarded in ecology. He was also the first member of the University of Georgia faculty to be elected to the National Academy of Sciences.

Dr. Odum was preceded in death by his wife, Martha, and sons William and Daniel. In addition to his brother, Howard, of Gainesville, FL, he is survived by a sister, Mary Frances Schinhan of Chapel Hill, NC.

A celebration of the life of Eugene Odum will be held on Wednesday, Oct. 16th, 4:00 p.m., at the University of Georgia's Hugh Hodgson Concert Hall.

Directions to the Center are available online at  
<http://www.uga.edu/~pac/contact.html>.

A reception will follow in the Georgia Museum of Art.

For more information about the service, contact

Dr. Gary Barrett at 706-542-6065.



Welcome to the first issue of the Golden Mean, the bi-yearly newsletter for the College of Environment and Design (CED), its alumni and friends! We hope this publication conveys the connections you will find between the Institute of Ecology, the School of Environmental Design (SED) and the world at large.

Our logo, designed by MLA student **Nancy Aten**, makes strong use of the same proportions found in nature and architecture -- from the spiral of a seashell to the Greek-inspired arches in front of the University of Georgia. Nancy's design won over a dozen other entries in a competition for the new college logo. For her efforts, she was awarded a \$200 UGA Book Store gift certificate, which she generously donated to the Owens library.

The new logo, in turn, inspired the name and design of this publication (for which we have **Janice Sand** and **Eleonora Machado** to thank, respectively). In the words of architect Gyorgy Doczi, the golden mean has a "unique capacity to unite the different parts of a whole so that each preserves its own identity, and yet blends into the greater pattern of a single whole." It is our hope that you find such wholeness in the new college, while still enjoying the uniqueness of its parts.

Enjoy what you find here, and let us know what you think!

published by the College of Environment & Design, The University of Georgia, Athens, GA  
30602 tel: (706) 542-1816 fax: (706) 542-4485

website: <http://www.ced.uga.edu>

email: [cednews@uga.edu](mailto:cednews@uga.edu)  
(Send info for spring 2002 issue by Dec. 2, 02)

Dean: John F. Crowley III  
Laurie J. Anderson  
Jane Link

Editors: Nancy Aten  
John F. Crowley III  
Mere Harr  
Brian LaHaie  
Janice Sand  
René Shoemaker  
Andrew Walter  
Eleonora Machado

Design:

compiled by  
Janice Sand,  
Jane Link and  
Laurie Anderson

## ALUMNI NEWS

### News from Ecology & Environmental Design

**CESD** - conservation ecology & sustainable development  
**MHP** - master's degree in historic preservation  
**MLA** - master's degree in landscape architecture

#### 1960s

**Jim Cothran** (MLA '68), vice president at Robert + Company, Architects, in Atlanta, has been elected as a Fellow in the American Society of Landscape Architects under the category "Service to the Profession". A formal induction ceremony will be held on October 19 during the ASLA Annual Meeting in San Jose, California. Jim will be teaching a class this fall at SED entitled "Southern Garden History with an Emphasis on Georgia."

**Armando de la Cruz**, PhD (ecology) '65, has retired from the Department of Biological Sciences at Mississippi State University. Prior to retiring, Armando was in the Philippines on a consulting assignment with USAID/Winrock International from September - November 2000; then in February, 2001, he went to Indonesia on a Fulbright Fellowship. He returned to the U.S. in September. Armando is now professor emeritus of biological sciences.

**James (Jim) Skeen**, PhD (botany) '69, has retired from Skeen Consulting in Decatur, Georgia.

**Elliot Tramer**, PhD (zoology/ecology) '68, has been promoted to professor and associate chair of the newly developed Department of Earth, Ecological and Environmental Sciences at the University of Toledo.

#### 1970s

**Frank Day, Jr.**, PhD (ecology) '74, has been promoted to eminent scholar of biological sciences at Old Dominion University in Norfolk, VA. Correction in the spring/summer/fall 2001 issue of *Intercom*, Dr. Day's name was incorrectly listed as Fred. He will serve as president of the Society of Wetlands Scientists, an international organization almost as large as the Ecological Society of America, in 2002-2003.

**Keith Douce**, PhD (entomology) '76, has been promoted to professor of entomology with the Coastal Plain Experiment Station in Tifton.

Congratulations to **Carole Dinkler Goodyear**, MS (zoology) '72, on her retirement from the National Marine Fisheries Service in Miami, Florida.

**Richard (Dick) Wetzel**, PhD (zoology/ecology) '75, has been promoted to chair of the Department of Biological Sciences at the College of William and Mary in Virginia.

**James Wiener**, PhD (zoology) '79, has accepted a distinguished professor appointment at the University of Wisconsin in LaCrosse.

**Robert (Bob) Woodall**, PhD (entomology) '72, has retired from the Southern Company. He now works with Fort Creek Farm in Sparta, Georgia where

*continued on page 3*

### News from Ecology & Environmental Design

*continued from page 2*

he is responsible for the management and preservation of an 18th/19th century plantation complex.

#### 1980s

**Daniel (Dan) Alongi**, PhD (zoology) '84, has been promoted to principal research scientist in the Australian Institute of Marine Science.

**Gail Cowie**, MS (zoology) '86, has been promoted to public service associate with the University of Georgia's Carl Vinson Institute of Government.

**Douglas (Doug) Facey**, PhD (zoology) '87, has been promoted to professor of biology at Saint Michael's College in Colchester, Vermont.

**Stuart Findlay**, PhD (zoology) '81, has been promoted to scientist with the Institute of Ecosystem Studies in Millbrook, New York.

**Nat Frazier**, PhD (ecology) '83, was initiated into the Gamma Sigma Delta Honor Society at the University of Florida's Chapter 2002 Award and Initiation Banquet.

**Jiragorn Gajaseni**, PhD (ecology) '88, has accepted an executive director position with Greenpeace Southeast Asia. His responsibilities include management of Greenpeace operations covering the 10 Asian countries.

**Peter Griffith**, PhD (ecology) '88, has accepted a position as project support manager for a large terrestrial ecology project funded by NASA. Peter is working on a large-scale biosphere atmosphere experiment in Amazonia (LBA), an international research initiative led by Brazil. LBA is centered on two key questions: 1) how does Amazonia currently function as a regional entity; 2) how will changes in land use and climate affect the biological, chemical and physical functions of Amazonia, including the sustainability of development in the region and the influence of Amazonia on global change.

**Peter Groffman**, PhD (ecology) '84, has been promoted to scientist with the Institute of Ecosystem Studies in Millbrook, New York.

**R. Thomas (Tom) James**, PhD (ecology) '89, has been promoted to senior supervising environmental scientist with the South Florida Water Management District in West Palm Beach, Florida.

**J. Michael (Joe) Meyers**, PhD (ecology) '82, has been promoted to research wildlife biologist with the USGS Patuxent Wildlife Research Center at the University of Georgia. His responsibilities include conducting research on neotropical migratory birds, Puerto Rican parrot, exotics, endangered species, forested wetlands/ecotones, and wildlife habitat.

**Ronald Miller**, PhD (ecology) '85, is working independently on several projects including editing scientific books and journals, and writing and editing children's nature books and stories.

**Nancy Munn**, PhD (ecology) '89 and **Daniel Kearns**, MS (zoology) '86, adopted five year old Gabriel Artuom Kearns (Gabe) in 2001. Gabe is from the Ukraine.

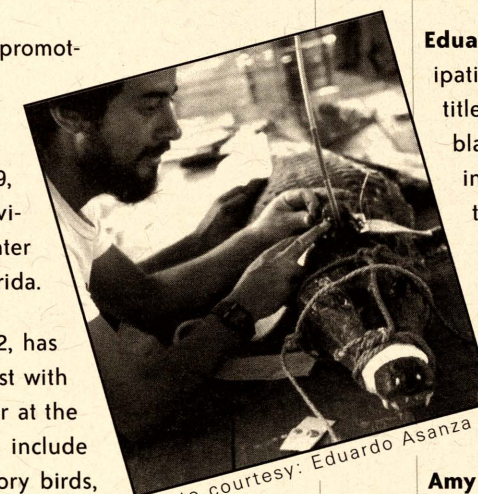


photo courtesy: Eduardo Asanza

**Jerry Qualls**, PhD (ecology) '89, has been promoted to associate professor of environmental and resource sciences at the University of Nevada.

**Lance Risley**, PhD (entomology) '87, has been promoted to full professor of biology at William Paterson University in Wayne, New Jersey.

**Tony Tucker**, MS (zoology) '89, has accepted a research officer position with Envirostatistics, an applied ecology research group at the University of Canberra in Australia.

**Mary (Maribeth) Watwood**, PhD (microbiology) '87, has been promoted to professor of microbiology at Idaho State University. She is also the assistant director for the ISU Waste Management and Environmental Science degree program.

#### 1990s

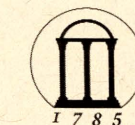
Congratulations to Kristopher Bayne and **Terrilyn Alchermes Bayne**, BS (ecology) '98/MS (CESD) '98, on the birth of their daughter Wyn-ter Marley Baynes, born March 4, 2002. Terrilyn and Kristopher own and operate a wedding photography/music business called Orpheus and Aphrodite. ([www.OrpheusAndAphrodite.com](http://www.OrpheusAndAphrodite.com))

**Eduardo Asanza**, PhD (ecology) '98, is participating in a new National Geographic series titled "New Wave". Asanza's research on the black caimans in Ecuador will be featured in the series sometime in early fall, as will the work of his wife (see Ana Sosa-Asanza, on following page). Filming took place in April in Ecuador, where he was shown capturing the endangered crocodile species by hand and pumping their stomachs to collect food samples for analysis.

**Amy Bergstedt**, BS (ecology)'99/MS (CESD) '99, has been promoted to environmental scientist with the U.S. EPA office in Denver, Colorado.

Congratulations to **Cheri Blizzard**, MHP '99, upon her marriage to Glen Bennett.

**David Bowne**, MS (CESD) '97, has completed his doctorate in environmental sciences from the University of Virginia. David accepted a



two year position at the University of Richmond as a GIS specialist and research scientist.

**Jeff Brooks**, MS (CESD) '98, received the George F. & Herma A. Baggley Graduate Fellowship and the CNR Need-Based Scholarship from College of Natural Resources at Colorado State University. The awards of \$4,000 and \$1,000 were given in recognition of academic excellence. Jeff is currently a doctoral candidate at Colorado State. He is also the campus Peace Corps recruiter.

The work of **Kurt Buhlman**, PhD (ecology) '98, was featured in a front-page story in the Dec. 27, 2001 issue of the *Washington Post*, and a Jan. 2, 2002 follow-up. Buhlman, a coordinator for Conservation International (C.I.), oversaw the airlift of 7,500 live turtles from Hong Kong to a south Florida turtle preserve. The turtles, including at least 12 endangered species, were originally headed for Chinese meat markets when they were intercepted by customs officials on Nov. 24th. Conservation International plans to return the animals to their natural habitats in southeast Asia.

**Marie Bundy**, PhD (ecology) '94, has been promoted to assistant curator with the Academy of Natural Sciences' Estuarine Research Center. Marie is conducting independent research on the trophic interactions that impact the planktonic food web, with emphasis on the feeding ecology of mesozooplankton and microzooplankton; small scale fluid dynamics and turbulence; and sensory physiology of crustaceans.

**Karen Bushaw-Newton**, PhD (ecology) '98, has accepted an assistant professor of biology position at American University in Washington, DC. Karen will be teaching biology, environmental policy, microbiology and ecology related courses. Her research will focus on aquatic systems in the mid-Atlantic.

**Leslie (Les) Carlough**, PhD (ecology) '90, has been promoted to senior policy advisor with the Oregon Department of Environmental Quality.

**Lisamarie (Lee) Carrubba**, PhD (ecology) '98, has been promoted to ecologist with the National Oceanic and Atmospheric Administration's Caribbean Field Office in Puerto Rico.

Congratulations to David D'Amore and **Toni De Santo**, PhD (ecology) '92, on the birth of their son, Mitchell D'Amore born on September 23, 2001.

**Joe DeVivo**, MS (ecology) '96, has accepted an inventory and monitoring coordinator position with the National Park Service in Atlanta, Georgia. Joe designs and coordinates biological inventory and long-term monitoring programs for seventeen National Parks along the Southeast Atlantic Coast and Coastal Plain from Cape Hatteras to Canaveral National Seashores.

**Anne Dix**, PhD (ecology) '97, has been promoted to environment officer with USAID and is on temporary assignment in Washington, DC for training. Anne advises the agency on the environmental impact of global programs and policy. She will be assigned a position overseas in the near future.

Congratulations to Andreas Puppa and **Robin Dukes Puppa**, BS (ecology) '99, who were married on February 16, 2002. Robin received a MS in geography from UGA in 2001. She is currently working as a research technician at UGA's Center for Remote Sensing and Mapping Science on a GIS map compilation for vegetation of the Great Smoky Mountains National Park.

**Sara Kathryn (Kitty) Esco**, BS (ecology) '97, has been promoted to senior public relations and information specialist with the Georgia Department of Natural Resources Nongame-Endangered Wildlife Program in Forsyth, Georgia.

**Brian Fath**, PhD (ecology) '98, has accepted an assistant professor of biology position at Towson University in Maryland.

**Carl Fitz**, PhD (ecology) '90, has been promoted to lead environmental scientist with the S. Florida Water Management District's Everglades Systems Research Division in West Palm Beach, Florida.

**Shenglei Fu**, PhD (ecology) '99, has accepted a postdoctoral position with the Department of Nematology at the University of California-Davis.

**Weihe Guan**, PhD (ecology) '93, has accepted a forestry information technology manager position with the Weyerhaeuser Company in Washington state.

**Kevin Hiers**, MS (CESD) '99, has accepted a monitoring coordinator/fire ecologist position at Eglin Air Force Base. Kevin and **Stephanie Davis**, MS (CESD) '00, were married on April 2, 2002.

**Natalie Hyslop**, BS (ecology) '97, completed a masters thesis in biology at the Purdue University in 2001 and is currently pursuing a doctorate degree in forest resources at the University of Georgia where she is studying the ecology of the Eastern indigo snake.

**Elizabeth Johnson**, MS (CESD) '96, completed a doctorate in biophysiology at UGA in 2000 under the direction of adjunct faculty member **Dorothy Fraszky**. Elizabeth has accepted an assistant professor of psychology position at Oglethorpe University in Atlanta.

**Karen Kandi**, PhD (zoology) '96, has been promoted to instructor of biological sciences at the University of New Orleans.

continued on page 5

continued from page 4

**Jim Kettler**, PhD (ecology) '95, has been promoted to director of the International Honors Program. Jim directs operations management and academic content of a series of international, comparative study abroad programs: Global Ecology; Cities in the 21st Century; Challenges of a Global Culture; and Indigenous Perspectives.

**Lucy Lawliss**, MLA, MHP certificate '92, recently became the National Park Service (NPS) Cultural Landscapes Program leader in Washington, DC. After ten years in the NPS Southeast Regional Office, where she helped to develop the regional cultural landscapes program, she now provides leadership and technical expertise in the research, planning, and stewardship for some of the nation's irreplaceable landscape resources. This effort is accomplished primarily through the Cultural Landscape Inventory (CLI) and through cultural landscape reports. Building on successful collaborations with the academic, public, and private sector, the Park Cultural Landscape Program is committed to institutionalizing the protection of significant landscapes.

**Laura Leff**, PhD (ecology) '92, has been selected as editor for *Applied and Environmental Microbiology*.

**Bonnie Ling**, BS (ecology/political science) '98, completed her masters degree in law and diplomacy at Tufts University in May.

**Jianguo Liu**, PhD (ecology) '92, has been promoted to associate professor of fisheries and wildlife at Michigan State University.

**Jeff Lovich**, PhD (ecology) '90, has been promoted to director of the USGS Western Ecological Research Center in Sacramento, California. Jeff manages a large biological research center for the USGS with field offices in California, Arizona and Nevada.

**Katherine Malone-France**, MHP '96, put her thesis research on Heritage Education to use at the Burwell School Historic Site, Hillsborough, North Carolina. She directs a program providing lessons in history and other topics for local primary-school students. Her program is a pilot program funded by the F.M. Kirby Foundation.

After eight years as a preservation planner, **Joreen Martin**, MHP '94, is now working as Senior Preservation Planner with The Jaeger Company, in Athens, Georgia.

**Tim McCay**, PhD (ecology) '98, has accepted an assistant professor of biology appointment at Colgate University.

**Mathew McDuffie**, BS (ecology) '96, has accepted a staff ecologist position with Genesis Project, Inc. in Smyrna, Georgia. His responsibilities include environmental consulting, subsurface investigation and remediation, groundwater fate and transport modeling, and interpretation and implementation of environmental regulations.

**Vicki Medland**, PhD (ecology) '97, has accepted an adjunct assistant professor of biology appointment at the University of Wisconsin's Cofrin Center for Biodiversity in Green Bay. Vicki teaches 5 courses per year, designs and writes content for the Biodiversity website and green map website, as well as providing graphic design and scientific illustration.

Congratulations to **Chloe Mercer**, MHP '96, who married MHP student **Brandon Brazil**.

After serving two years as executive director for the Louisiana Preservation Alliance, **Jennifer Maul Messer**, MHP '97, returned to Georgia to work first as the manager of Foundation and Government Relations for the High Museum of Art and currently as the director of development for UGA's Lamar Dodd School of Art.

**Scott Messer**, MHP '96, is a campus preservation planner in the Office of University Architects at the University of Georgia. Messer and fellow preservationists **Ken Kocher** and **Monica Callahan** developed and maintain Piedmont Preservation, a small preservation consulting firm specializing in resource inventories and design guidelines. Messer and wife Jennifer live in Winder where they are restoring an early 20th Century house and raising a family of anxious black dogs.

**Diana Miles**, MHP '96, is now in Winston-Salem, N.C., where she is with the city/county planning board.

**Kristi Minahan**, MS '99, made a cameo appearance in a CNBC video on agricultural runoff and what farm operators in various states are doing to help reduce it in order to protect water quality. Kristi set up all the Wisconsin interviews. Five other states participated in providing information for the video titled Techno 2100: Farming for Cleaner Waters, which aired on June 29th. She also helped with two episodes of "Into the Outdoors," a children's program which airs on weekend mornings.

**Liesl Pimentel**, BS (ecology) '98, is working as a volunteer coordinator with Arizona Clean and Beautiful in Mesa, Arizona. Her responsibilities include coordinating events and recruiting volunteers.

**Doroto Poranzinska**, MS (CESD) '94, has been promoted to scientist at the Natural Resources Ecology Laboratory at Colorado State University.

**Evelyn Green Reece**, MHP '96, has completed her second year as Preservation Planner with Athens/Clarke County Planning Department Historic Preservation Program.

continued on page 6

the golden  
mean

page 05



**Anne Reilly**, PhD (ecology) '94, has been appointed adjunct instructor of ecology in the Department of Biological Sciences at Florida Atlanta University. Anne is teaching the principles of ecology.

**Brian Robinson**, MHP '98, has joined the Jekyll Island Authority as Historic Preservation Superintendent.

**Fausto Sarmiento**, PhD (ecology) '96, has been elected chair of the Mountain Geography Specialty Group of the American Association of Geographers, at its 98th annual meeting in March.

**Patricia (Patty) Saunders**, PhD (ecology) '97, has accepted an assistant professor appointment in the Department of Biology and Toxicology at Ashland University in Ohio. Her research focuses on limnology and aquatic ecology.

**Kristin Smith**, MS (forest resources) '94, has been promoted to district conservationist with the Natural Resources Conservation Service in Brunswick, Georgia. She carries out USDA conservation programs in Glynn, Camden, and Wayne counties.

**Robert Smith**, MS (forest resources) '91, has accepted a forest and wildlife biologist position with the Lodge at Cabin Bluff in Woodbine, Georgia. He provides integrated land management services for private landowners.

**Peter Stangel**, PhD (ecology) '90, has been promoted to regional director of the National Fish and Wildlife Foundation in Atlanta, Georgia.

**Maurice Ungaro**, MHP '94, is working with the Atlanta Regional Development Commission.

**Eric Van de Genachte**, MS (CESD) '96, has recently received his real estate license and is currently producing natural history digital videos and DVDs.

**Petra van Vliet**, PhD (ecology) '94, is currently employed as a postdoc at Wageningen University in The Netherlands. Her research is focusing on the effects of heavy metals on soil biota in a floodplain and the effects of manure quality on abundances and activities of soil fauna.

Best wishes to **Lisa Vogel**, MHP '93, who married **Chad McKinney**, BLA '96.

**Matt Whiles**, PhD (ecology) '95, has accepted an assistant professor position with the Department of Zoology at Southern Illinois University in Carbondale. Matt teaches and conducts research in freshwater invertebrate ecology.

**Christina Wright**, PhD (ecology) '98, has accepted a data manager appointment with the National Park Service Center for Urban Ecology in Washington, DC.

## 2000s

**Jonathan Benstead**, PhD (ecology) '00, has accepted a postdoctoral scientist position with the Marine Biological Laboratory at Woods Hole. Jon is studying Arctic grayling, a type of fish, and the responses of small streams to nutrient enrichment at the Toolike Lake Field Station in Alaska.

**Danny Bivins**, MHP '02, is working as the coordinator for *The Alliance for Quality Growth* and *The Balanced Growth Initiative* at the University of Georgia. Both programs educate Georgia policymakers, planners, developers, and the general public on planning management tools available to promote efficient and sustainable land use and natural resource development.

**Allison Cerulli**, BS (ecology) '01, is working as a volunteer for the Sequatchie Valley Institute at Moonshadow, a non-profit organization which focuses on providing an example of sustainable living. Allison works in the permaculture gardens and on environmental activism issues.

**Madie Critchfield**, MLA '01, is a member of the landscape architecture staff at The Jaeger Company in Gainesville, Georgia. She has participated in various projects including campus planning and design projects; parks and streetscape master planning; and design guideline manuals. Madie redesigned the company website ([www.jaegerco.com](http://www.jaegerco.com)), and she with fellow alum **Carmine Fischetti**, MLA '01, are the caretakers for The Kistner Center, a 40-acre future Center for the Arts and Environment, owned by The Gwinnett Trust for Open Land.

**Carmine Fischetti**, MLA '01, is a Community Design Specialist with the Georgia Department of Community Affairs' Office of Downtown and Community Services in Athens, GA.

**Casey Grier**, MHP '01, is working as Preservation Coordinator for the Historic Savannah Foundation.

**Judith (Judy) Guinan**, PhD (ecology) '00, has accepted a tenure-track position as an assistant professor of ecology and director of the Environmental Center of Excellence at Radford University in Radford, Virginia. Judy will start her new position in fall semester 2002.

**John Hutchens, Jr.**, PhD (ecology) '00, has accepted an assistant professor of biology/ecologist appointment at Coastal Carolina University in South Carolina. He will begin his new position in the fall.

**Katherine Dowell Kearns**, PhD (ecology) '00, is revising the laboratory curriculum for the biology department at Boston University. By spring 2003 students will be using a new lab manual that Katherine assisted in developing. She has also started a graduate course on how to teach undergraduate sci-

continued from page 6

ence courses. Plans are underway to make the course a requirement for all incoming graduate students.

**Rebecca Klaper**, PhD (ecology) '00, has renewed her fellowship with the U.S. EPA's National Center for Environmental Assessment in Washington, DC, where she is working on the use of genomic technologies in ecological risk assessment.

Congratulations to **Jenny Ladenheim**, MHP '02, who recently married Zach Warren.

**Christine Laughlin**, MHP '01, is the Local Government program coordinator for the Georgia Department of Natural Resources' Certified Local Government Program. She maintains an office in the Founders Memorial Garden House on the UGA campus.

**Jason Lee**, MS (CESD) '02, has accepted a program coordinator position at the UGA Institute of Ecology. Jason is conducting GIS research on land use change in Georgia. Jason and Rachel Chamberlain were married on May 2, 2002.

**Eleonora Machado**, MLA '01, is working as graphics specialist in the Office of Public Service and Outreach in the College of Environment and Design.

**Julie March**, PhD (ecology) '01, has taken a position with the Sustainable Agriculture and Natural Resource Management Collaborative Research Support Program (SANREM CRSP). Julie recently returned from a filming trip to Northeastern Brazil. The National Geographic channel invited Julie to discuss her work with the landless farmers' movement and the environmental consequences of agrarian reform in the Northeastern Brazilian state of Pernambuco. She has worked intensively with two communities of formerly landless farms. Her work will be showcased during a thirty-minute episode of a new weekly program entitled "New Wave" which features young scientists around the world doing cutting edge research. The program will air this summer.

Congratulations to Dan Miller and **Kristen Hood Miller**, MS (CESD) '00, who were married on April 13, 2002. They also recently initiated an Athens-area cooperative of local organic growers called Locally Grown to help expand the market for sustainable crops in northeast Georgia. ([www.boannsbank.com/locallygrown](http://www.boannsbank.com/locallygrown))

**Taras Oleksyk**, PhD (ecology) '01, is working as a postdoctoral fellow with the National Cancer Institute in Frederick, Maryland where he is overseeing an independent project on Viliuisk encephalomyelitis. Taras continues to work and publish his work on radioactively contaminated locations in the Chernobyl Exclusion Zone. He will be presenting a paper this summer on genetic changes in small rodents from the radioactively contaminated areas around the reactor at the International Conference on Radioactivity in the Environment.

**Jeffrey Pollock**, BS (ecology) '00, is currently pursuing a doctorate in biological sciences at the University of Alabama. His research is focusing on aquatic insects and stream ecology.

**Alonso Ramirez**, PhD (ecology) '01, has an assistant professor appointment at the University of Puerto Rico's Institute for Tropical Ecosystem Studies in San Juan. Alonso teaches graduate and undergraduate courses, conducts

stream ecology research, and is the scientific director for the El Verde Field Station.

**Becky Rice**, MHP '02, was awarded the Marco Polo Stufano Garden Conservancy Fellowship. The Fellowship is a 9-month position that the Garden Conservancy awards each year to one recipient to be served at one of their gardens. The fellowship is named after recently-retired Marco Stufano,

Director of Horticulture for 35 yrs at Wave Hill, a public garden in the Bronx. Ms. Rice's fellowship is at the Ruth Bancroft Garden in Walnut Creek, CA. This is the first garden to be taken on as a preservation project by the Garden Conservancy.

**Emma Rosi-Marshall**, PhD (ecology) '02, has accepted a postdoctoral position at the University of Notre Dame.

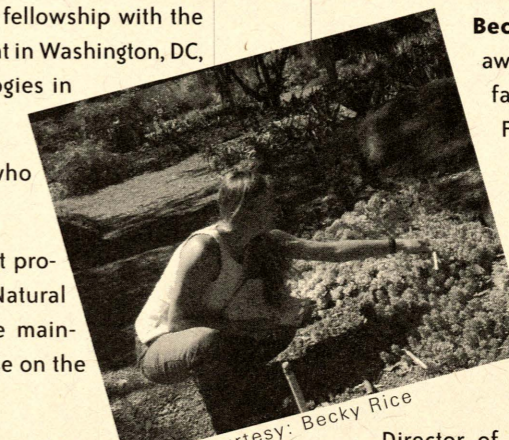


photo courtesy: Becky Rice



photo courtesy: Alissa Salmore

Congratulations to Mike Thomas and **Alissa Salmore**, MS (ecology) '00, who were married in September 2001. Alissa has accepted a research associate position with the University of Wisconsin Great Lakes Water Institute. Her work focuses on bacterial genetics research for water pollution source tracking.

**Diane Sanzone**, PhD (ecology) '01, accepted a postdoctoral scientist appointment at The Ecosystem Center's Marine Biological Laboratory in Woods Hole, Massachusetts. Diane's

research focuses on stream biogeochemistry, stream food webs, and riparian ecology.

**William B. (Burt) Schutza**, BS (ecology) '00, is employed as an agricultural research technician with the USDA in Watkinsville, Georgia. Burt's responsibilities include testing and studying soil and plants.

**Mark Scott**, PhD (ecology) '01, accepted a postdoctoral research associate position with the University of Georgia Institute of Ecology. Mark is developing environmental stressor and ecological response models under the direction of **Dr. Bud Freeman** on a U.S. Forest Service grant. Mark was invited to author the aquatic section of the Encyclopedia of South Appalachian Forest Ecosystems, a peer-reviewed Web document produced by the U.S. Forest Service.

(<http://encyclopedia.soforext.net>)

**Mark Sirotkin**, MHP '01, is employed by The Jaeger Company, Athens, Georgia.

**Ana Sosa-Asanza**, PhD (ecology) '00, was filmed by National Geographic this past April conducting research in the Cuyabeno area of Ecuador. Sosa-Asanza was shown climbing 45-foot high trees to reach platforms in the Amazon jungle canopy from which she studies the eating habits of parrots, macaws and parakeets. The film will be broadcast on the National Geographic network sometime this fall.

**Jennifer Taylor Fullilove**, BS (ecology) '00, received a masters of teaching degree in science education from Lewis and Clark College in 2001. She is currently a high school science teacher in Portland, Oregon.

**Linda S. Velazquez**, BLA '00, has developed a website on greenroof technology that is proving to be a valuable resource for companies and individuals interested in the subject ([www.greenroofs.com](http://www.greenroofs.com)). Her presentation at a conference on greenroofing that was recently held in New York City received coverage in the June 3rd issue of *The New York Sun*.

**Friends**

**Sina Adl**, former ecology postdoc with Dr. Dave Coleman, has accepted an assistant professor position with the department of biology at Dalhousie University in Nova Scotia. Sina is teaching microbial ecology and comparative cell biology. He has received a National Science and Engineering Research Council grant to look at the impact of fungivory on ectomycorrhizae establishment in pine seedlings. His book on the ecology of soil composition is almost complete and will be published in early 2003.

**Brent Danielson**, former ecology postdoc with Dr. Ron Pulliam, has been promoted to associate professor of ecology, evolution and organismal biology at Iowa State University.

**Michael Douglas**, former visiting scientist, has taken a research scientist position with the Department of Fishery and Wildlife Biology at Colorado State University.

**Jeroen Gerritsen**, former ecology postdoc, has been promoted to director Tetra Tech, Inc. in Owings Mills, Maryland. His responsibilities include project management and data analysis.

**Skelly Holmbeck-Pelham**, former program coordinator for the Institute of Ecology's River Basin Science and Policy Center, has taken a program manager position with the Upper Chattahoochee Riverkeeper in Atlanta. Skelly tracks policy changes, such as those coming from the metro planning district and the tristate water wars, and works to effect change for the protection of instream flows.

**Charles Hopkinson**, former associate marine scientist at the UGA Marine Institute and UGA professor of zoology, has been promoted to senior scientist with the Ecosystem Center at Woods Hole, Massachusetts.

**Susanne James**, former assistant research ecologist at the Savannah River Ecology Laboratory, has been promoted to director of degree programs and summer programs at Western Washington University in Bellingham.

**Dowon Lee**, former ecology postdoc with Dr. Carl Jordan, has been promoted to professor of environmental studies at Seoul National University in Seoul, Korea.

**Guy McPherson**, former ecology postdoc with Dr. Susan Bratton, has been promoted to professor of renewable natural resources and ecology and evolutionary biology at the University of Arizona. He was recently honored with UA's Professional Education Teaching and Mentoring Award, and also has books in press with Cambridge University Press and University of Arizona Press.

**Stewart Odend'hal**, former Institute of Ecology affiliate faculty member, has retired from the University of Georgia and is now residing in Albuquerque, New Mexico where he is assisting in animal rescue and public lands organizations.

**Ann Pickett**, former ecology staff member, has accepted an associate attorney position with Troutman Sanders, LLP in Atlanta, Georgia. Ann's responsibilities include local government law and wetlands permitting.

**Mart Allen Stewart**, former Institute of Ecology affiliate faculty member, has been promoted to professor of history at Western Washington University in Bellingham. He recently returned from 15 months on a Fulbright fellowship in Vietnam, where he taught environmental education and American Studies and researched comparative forest history. He has also been awarded a fellowship at the National Humanities Center in Research Triangle, NC, where he will work on a book on the cultural history of climate. More information on Dr. Stewart's work in Vietnam can be seen at [www.iie.org/cies/stories/s\\_mstewart.htm](http://www.iie.org/cies/stories/s_mstewart.htm).

**Brian Toth**, former Institute of Ecology employee, completed his J.D. in May 2002 and has accepted an offer to work in the Environmental and Natural Resources Division at Department of Justice in Washington, D.C., as part of the Attorney General Honor's Program. The job involves litigating environmental cases in federal court on behalf of the United States government. He will begin work in Fall 2002, after taking the bar exam.

Send alumni news items to Janice Sand ([jsand@uga.edu](mailto:jsand@uga.edu)) and keep in touch through UGA Alumni Online ([www.alumni.uga.edu/alumni](http://www.alumni.uga.edu/alumni))!

**Executive Masters Degree of Landscape Architecture**

by Dean John F. Crowley, III

The University of Georgia and other accredited masters of landscape architecture degree programs typically offer an "abbreviated" course of studies for students who have already graduated from design programs and who have been practicing in the design profession for ten years or more. This professional degree is typically granted after a prescribed 30-40 credit hours and thesis.

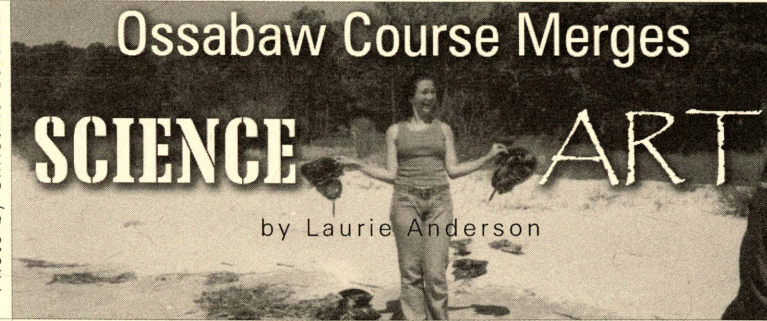
Many professionals, particularly in the Atlanta region, have expressed interest in going into such a program if they can do so without unreasonably disrupting their family and professional lives. Using the "Executive" MBA model used by the Terry College of Business here at UGA, the college is considering designing an "executive" graduate degree with a mixture of Atlanta-based classes, distance learning and web courses, Athens weekend seminars and self-study courses.

Success will require that the college assemble a studio of interested candidates (15-18) who will then move through the course sequence together. The tuition will have to be set to allow the program to self fund and students will have to be "admitted" to the University. As demand continues, we will begin new sequences or classes.

Candidates who are graduates of any accredited college or university in landscape architecture, architecture, interior design, urban design and planning and who have been practicing for 10 years or more may be eligible to participate. The College of Environment and Design will be developing plans for the program during fall of 2002.

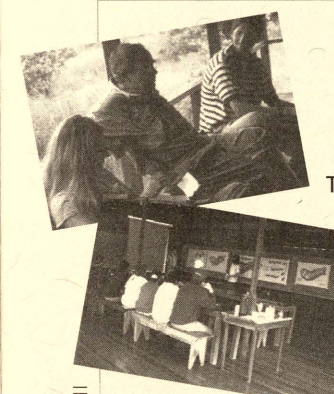
Those interested should e-mail Tilda Wall at [twall@uga.edu](mailto:twall@uga.edu), or call her at (706) 542-1365 or write the College of Environment and Design at 609 Caldwell Hall, University of Georgia, Athens, GA 30602-1845.

Photo by Christine Gardiner



Student Kelly McCullough handles horseshoe crabs during the course "The Science and Art of Barrier Island Conservation" at the Ossabaw Island Natural Heritage Preserve, a 26,000 acre barrier island located near Savannah, Georgia.

This Maymester thirteen students from diverse majors participated in a unique environmental course titled "The Science & Art of Barrier Island Conservation." The course, taught by **Christine Gardiner**, applies an interdisciplinary approach to contemporary conservation challenges, using the Georgia coast island of Ossabaw as a focus. Students and guest lecturers spend part of the course on the island, studying how local culture and ecology interact. SED faculty **Mark Reinberger** and **Brian LaHaie** gave their perspectives on coastal colonial architecture of the island; other guests included Todd Holbrook, chief of the game division of the Georgia Department of Natural Resources (GDNR), geologist Dr. David Dallmeyer; Lamar Dodd school of art instructor Didi Dunphy, island manager Jim Simmons, and GDNR natural heritage and animal management experts Mike Harris and Andy Meadows. For more information, contact Ms. Gardiner at [turtle@sparc.ecology.uga.edu](mailto:turtle@sparc.ecology.uga.edu) or visit the Ossabaw course website at [www.ecology.uga.edu/ossabaw.html](http://www.ecology.uga.edu/ossabaw.html).



photos courtesy: Allen Stovall

**COSTARICA MAYMESTERPROGRAM**  
by Jane Link

Twenty-five students participated in this year's Costa Rica program. They came from biology (seven students), ecology (eight students), and landscape architecture (six students), and majors also included genetics, biological engineering, and environmental health.

Two ecology courses (ECOL 3510 and 4960), taught by doctoral student **Erin Lindquist** and Drs. Milton and **Diana Lieberman** and **Jim Richardson** provided laboratory and research background to the culture and natural environment of this Central American country. Study sites included lowland rainforest, Pacific dry tropical forest, and cloud forest regions. An ecology internship opportunity (ECOL 4940) was also available under the direction of Dr. Diana Lieberman.

Six SED students (**Sean Allen, Whitney Bass, Chris Dye, Rachel Holcomb-Gurley, Graham Owens, and Alex Thibadoux**) participated in a design studio (LAND 4910/6910) directed by **Allen Stovall** and **Gregg Coyle**. The studio focused on design development of a master plan for the recently acquired 169 acre Ecolodge San Luis located within the Monteverde Province. The summer 2002 session, a continuation of work from the previous summer, included extensive site inventory work, program development options, and design proposals for this new campus extension.

the golden mean

page 8

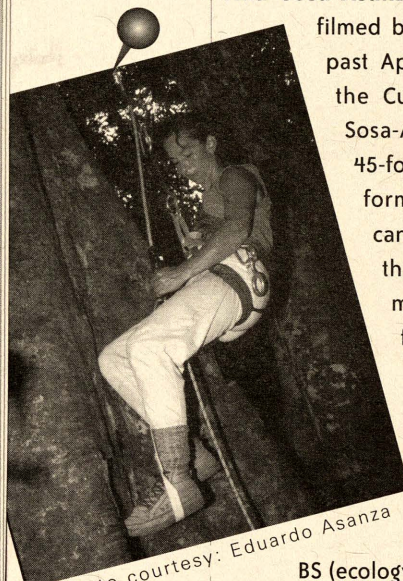


photo courtesy: Eduardo Asanza

the golden mean

page 09



# TANYARDcreek

STREAM RESTORATION CLASS

by Laurie Anderson

photos courtesy:  
Sue Herbert and Eleonora Machado

page 10

This summer for the first time CED offered a course specifically aimed at teaching undergraduate and graduate students about urban stream remediation, with a local stream as the focal point. CED Dean **John F. Crowley** and teaching assistants **Laura England** and **Sue Herbert** led 17 students from various disciplines as they got first-hand experience in gathering, assessing and planning ways to improve and maintain water quality data for Tanyard Creek, which runs through the UGA campus.

The class attended lectures given by NC State's Stream Restoration Institute experts and toured four stream restoration sites in the Raleigh, NC area. There they learned about stream restoration projects in urban settings involving different spatial constraints. They also conducted a "creek walk" for their own campus stream, walking the entire length of that portion of Tanyard Creek which is situated on UGA property.

"[That] was an adventure, and included walking through a dark box culvert under Baxter Street that is several hundred feet long!" said Laura England. Students were impressed, England added, with "how tall, steep, and eroded Tanyard's banks are by the Tate Center -- in some places 3-5 meters tall!"

Students also researched different aspects of stream restoration, such as native riparian communities of the Georgia Piedmont, monitoring plans, innovative stormwater management, greenway design, and stream restoration case studies.

Faculty from around campus provided expertise as guest lecturers. They were: David Gattie and Bill Tollner, biological and agricultural engineering;

**Hank Methvin** and **Darrel Morrison**, environmental design; David Leigh, geography; **Judy Meyer**, ecology; Todd Rasmussen, forest resources; and MLA graduate **Alfie Vick**.

Students developed in-depth designs for improving and maintaining water quality in the portion of the creek by the Tate Center, near the central part of campus. They also made conceptual recommendations for the rest of the creek.



The course attracted both graduate and undergraduate students from a wide variety of backgrounds -- environmental design, ecology, biology, environmental education and also three university employees working in areas related to the subject (agricultural engineering, campus architects, and the Georgia Stream Buffer Initiative).



"We'd like for other iterations of this summer studio/seminar course to continue for the next couple of summers," said England "to work on restoration designs for other reaches of Tanyard Creek."

compiled by  
Laurie Anderson  
and Jane Link

## FACULTYNEWS

**Rebecca (Becky) Bixby**, ecology, married Erik Zeek on June 1st in Ann Arbor, Michigan. Dr. Bixby also recently received a two-year National Science Foundation (NSF) grant to study the biodiversity and community structure of in algae in Costa Rica. Congratulations, Becky!

Adjunct/courtesy ecology faculty member **Liz Blood** has been promoted from a research position at the Joseph Jones Ecological Research Center to education and outreach ecologist. Blood has been at the Jones Center since 1993. Her experience and interests include development and implementation of a science based outreach program in water resources.

**Ron Carroll**, ecology, will represent the College of Environment and Design on the university president's faculty advisory committee beginning Fall Semester 2002 for a three-year term.

At the annual Honors Day held by School of Environmental Design (SED) at the Founders Garden on campus this April, **Marianne Cramer** received the 2001 Georgia Students of Landscape Architecture (GSLA) Students' Choice Teaching and Design Award.

**Ian Firth**, landscape architecture, was inducted as a Fellow into the American Society of Landscape Architects (ASLA) this past fall. The title of Fellow, given to ASLA members for outstanding contributions to the profession, is one of the highest honors bestowed by that organization.

**Bill Fitt**, ecology, was approved for promotion to full professor by the Board of Regents at their April meeting.

The second phase of a climate forecasting project involving ecology affiliate faculty member **Gerrit Hoogenboom**, biological and agricultural engineering, was approved by the

National Oceanic and Atmospheric Administration's Office of Global Programs. The project, a collaborative effort between UGA and Tufts University to assist farmers in Burkina Faso, will be funded for \$500,000 over the next two years.

**Carl Jordan**, ecology research scientist, was selected to serve as consulting editor for *Environmental Series*. These are a series of books aimed at the high school level, and designed to increase students' awareness of environmental problems and solutions.

At SED's annual Honors Day this April, **Marguerite L. Koepke** received the GSLA Students' Choice Award.

**Judy Meyer's** quick action helped clear up a polluted creek on campus in late May. When high levels of E.coli were discovered in Tanyard Creek where it emptied out of UGA's Sanford Stadium, Meyer told university construction personnel to look for a broken sewage pipe. The leak was located and repaired soon afterwards.

**Roger Moore**, SED, has been elected as a Fellow in the American Society of Landscape Architects (ASLA) under the category Knowledge/Education. He will be formally inducted on October 19 during the ASLA annual meeting in San Jose, California.

**Darrel Morrison**, landscape architecture, retired this summer. See page 15.

**Cathy Pringle**, ecology, was elected president of the North American Benthological Society (NABS) in May 2002. The NABS annual meeting will be held in Athens in May 2003. Pringle has also been invited to join a new National Research Council (NRC) committee on assessing and valuing the services of aquatic and related terrestrial ecosystems, and has been designated chair of the Ecological Society of America's Sustainable Biosphere Initiative steering committee.

**Ron Pulliam**, ecology, received this year's Distinguished Service Citation from the Ecological Society of America (ESA), it was announced in early May. The award recognizes individuals who have given long and distinguished service to the ESA. The vote for Dr. Pulliam was unanimous.

**William L. Ramsey**, environmental design, was honored by the university in Spring 2001 with a Superior Teaching Award.

The Outstanding Ecology Instructor Award for 2001 went to **Jim Richardson**.

Adjunct/courtesy ecology faculty member **Fausto Sarmiento** was named executive director of UGA's Office of International Education, it was announced in June, and began directing UGA's study abroad programs and immigration services on August 1.

**Bruce Wallace**, ecology, testified on June 6th before the U.S. Senate on the effect of mountain-top removal/valley-fill coal mining practices on Southern Appalachian streams. The Senate subcommittee on Clean Air, Wetlands, and Climate Change was conducting a hearing to review proposed revisions to

continued on page 12

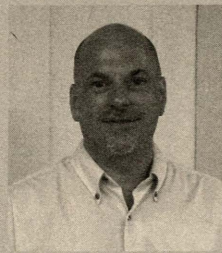
page 11



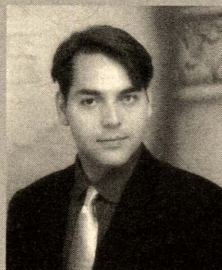
Dr. Jim Richardson  
photo courtesy: Janice Sand



New Hires:



**Wayde Brown**, (BEDS, BArch, Dalhousie University, Canada; MA in Architectural Construction, University of York, UK) was appointed assistant professor of historic preservation, effective August 2, 2002. He has been head of Heritage Building programs for the province of Nova Scotia, and worked in architectural offices in Canada and South Africa.



**Jose R. Buitrago**, (BLA, Pennsylvania & MLA, Harvard), was appointed assistant professor of landscape architecture, effective August 2, 2002. Buitrago has worked in private practice with design and restoration work in the U.S., Barbados and Puerto Rico. His interest is in native flora of the Caribbean basin.



**Brian LaHaie**, (MLA University of Illinois) was appointed associate professor of Landscape Architecture, effective January 2, 2002. He teaches design, construction, and environmental planning. Brian is a registered landscape architect and continues a small practice emphasizing native landscapes, ecosystem restoration and environmental interpretation. LaHaie taught at Auburn University for 16 years.

the golden mean  
page 12

photos courtesy: CED Photo Library

continued from page 11

the wetlands program of the Clean Water Act (for Dr. Wallace's testimony, see [http://www.senate.gov/~epw/stm1\\_107.htm#06-06-02](http://www.senate.gov/~epw/stm1_107.htm#06-06-02)).

**John C. Waters**, director of the masters of historic preservation program, led the "Mobile Workshop on Technical Aspects of Historic Preservation" for the ICOMOS (International Council of Monuments and Sites) Conference on Conservation and Historic Preservation April 4-6 at the Dean Rusk Center on the UGA campus. The conference was sponsored by ICOMOS' United States committee (US/ICOMOS), the Samuel H. Kress Foundation, and University of Georgia's School of Environmental Design, School of Law, Institute of Ecology and Environmental Law Association. It was organized and coordinated by **James K. Reap**, adjunct faculty at CED and Georgia State in Atlanta and a Fellow at the Rusk Center.

**Scott S. Weinberg** was the College of Environment and Design Superior Teaching recipient, 2002, at SED's annual Honors Day this April. Weinberg was also selected to participate in the Senior Teaching Fellows Program for the 2002-2003 school year. The program provides an opportunity for eight outstanding faculty members to focus on issues of teaching and learning.

**Richard Westmacott**, landscape architecture, retired July 1, 2002 (See page 14).

TRANSITIONS

In a January ecology faculty meeting, **Laurie Fowler**, **Amy Rosemond** and **Mary Freeman** were approved for appointment to regular graduate ecology faculty status, and adjunct faculty member **Geoffrey Poole** was approved for provisional graduate faculty status.

GALLERYNEWS

Exhibits in the SED Gallery  
Academic Year 2001-2002

2001

**August 13- August 24**  
*Living & Moving: Preserving examples of Southern Culture*  
Burke Walker's class, spring 2001

**August 29 - September 10**  
*Ghana Studies Abroad: Sharing the Ghana Experience with Landscape Architecture and Historic Preservation*  
Pratt Cassity's study abroad, summer 2001

**September 17 - October 5**  
*Costa Rica Summer 2001*  
Gregg Coyle and Allen Stovall study abroad

**October 10 - October 26**  
*Expression of Place*  
Darrel Morrison's class, Maymester 2001

**November 12 - December 21**  
*Portfolio*  
Eleonora Machado's class, Fall 2001

2002

**January 1 - February 7**  
*Imagining Cities: Drawing and Sketching and Urban Design - the work of Peter Drey*  
Alumnus Peter Drey, MLA 1981

**February 15 - February 21**  
*Portfolio*  
Eleonora Machado's class, Spring 2001

**February 25 - March 1**  
*Impact of Culture on the Landscape*  
Marianne Akers' class, Spring 2002

**March 11 - April 12**  
*Journey to the Undreamed Alternative: A design odyssey*  
William Ramsey's design evolution

**April 1 - April 30**  
*An Urban Design Exhibition*  
Hank Methvin's class, Spring 2002

UP  
coming  
exhibits for Fall 2002:

Two exciting exhibits coming this fall are on the work our professors have been doing while everyone else is vacationing:

Dean Crowley has been working this summer with graduate students from landscape architecture and ecology as well as campus personnel to continue a study of Tanyard Creek which runs through the UGA campus. The team gave a wonderful presentation to a mixed audience on August 1, 2002 in the Broad Street Studios to much acclaim.

Richard Westmacott, in recent wanderings, has been talking to, photographing, and studying community gardens and their gardeners in metropolitan New York, England, Germany and Poland. The photographs are beautiful and evocative of the importance placed on the gardens by these city dwellers.

Tanyard Creek  
Restoration - Summer  
2002 Design Studio

Richard Westmacott's

exposé on  
Community Gardens

in New York, England,  
Germany and Poland

by Laurie Anderson

southern  
NATURE  
writers

"The Importance of the Local"

the golden mean

page 13

In late April, the Environmental Ethics Certificate Program (EECP) co-sponsored a three-day series of events focusing on literary interpretations of the Southern landscape. The events, held at various locations around Athens, Georgia, included an hour-long radio program, separate speaker sessions with nature essayists Rick Bass and Janisse Ray, and an all-day writers workshop.

The radio program, which was interspersed with original jazz pieces performed by Athens musicians Randall Bramblett and Chuck Leavell, was broadcast live from the UGA Chapel over Georgia Public Radio. It featured readings by Bill Belleville, Franklin Burroughs, Chris Camuto, Jan DeBlieu, Jim Kilgo and Janisse Ray.

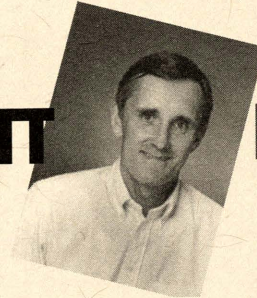
A day-long regional writers workshop was held at the State Botanical Garden. Speakers from a variety of writing backgrounds addressed attendees in one-to-two hour sessions. Pulitzer-nominated investigative journalist Julie Hauserman spoke about her experiences researching and breaking a story on the leaching of arsenic from pressure-treated wood commonly used in playground equipment. John Lane, a co-founder of the Hub-City Writers Project (Spartanburg, SC) described a writing project which drew community attention to an unappreciated waterway and helped in its protection. Janisse Ray conducted a session on shaping essays.

Bill Hammond, a professor at Florida Gulf Coast University who has taught creativity workshops to corporate managers, ran participants through a series of writing and art exercises designed to help their observation and interpretation skills. Through the use of his own journals, filled with sketches, quotes, news clippings, pressed plants, cut-outs and hand-written notes, he demonstrated various techniques for triggering perceptive writing. The results of at least one of his exercises, a challenge to "write everything you know about thunderstorms in five minutes" went on to gain national exposure as a commentary piece by Julie Hauserman that aired several months later on National Public Radio.

Other workshop instructors included Norine Cardea, Roger Pinckney, Bill Belleville, Thomas Rain Crowe, Barbara Ras, Susan Cerulean and Ann Fisher-Wirth, on activism, nature memoirs, personal hurdles, poetics, publishing and community-building through writing.

The workshop drew professional participants from seven southeastern states -- Florida, Georgia, Mississippi, North and South Carolina, Tennessee and Virginia. All events were organized by Dorinda Dallmeyer, EECP chair, and author Janisse Ray. It was funded in part by the Lyndhurst Foundation, R.E.M./Athens, L.L.C., and the University of Georgia Center for Humanities and Arts.

# WESTMACOTT RETIRES



Professor of landscape architecture **Richard Westmacott** (B.Sc., horticulture, University of Reading, England. MLA, University of Pennsylvania, PA) retired July 1, 2002. Westmacott started teaching landscape architecture in SED in 1977 as a visiting professor. His areas of interest are rural conservation and development, agrarian literature and painting, history of agricultural rural settlement, vernacular gardens and surface mining and water resources. Westmacott will remain as professor emeritus teaching "Ideas of Nature" in Fall 2002.

*Westmacott is a storyteller. It is one of the first things people say about him. The following is a retelling of a Westmacott story by two of his former students.*

## Richard Westmacott WRACKS new volvo

Spring afternoon, 2002.



Just weeks after purchasing a sporty new Volvo sedan, UGA professor Richard Westmacott, 60, of 59 Oconee Forest Rd, just off of Bull Bray Road (which is a ridiculous name, since bulls do not bray) struck the vehicle of Marcie Fickelstein, 31, of 151 W. Broad, from the rear. No one was injured in the incident, but vehicle damage was relatively severe.

Fickelstein reported that when Westmacott approached her immediately after the accident, she thought that he was drunk, but realized soon afterwards that he just had a "funny accent." She also reported that Westmacott was adamant that the wreck was the fault of some swinging bull testicles.

The driver-at-fault, Westmacott, reported that as he was traveling east on Lexington Highway to his home in Village Westmacott in Stephens, Georgia, he ended up behind a trailer hauling a large bull. Westmacott

described being distracted by the gyroscopic action of the bull's rather sizable testicles. "The bull was tottering on the trailer, yet was able to keep its balance remarkably well. I was nearly hypnotized watching the pendulum action of the bull's balls." Westmacott, always the acute observer, speculated that perhaps the swinging action worked to counterbalance the bull, which was subject to the side-to-side movement of the trailer.

The trailer made an abrupt right turn and Westmacott, displaying the observant curiosity that made him such a marvelous professor, wanted to see if the centrifugal force that affected the trailer and bull during their turn would be counteracted by the balancing effect of the pendulous genitalia.

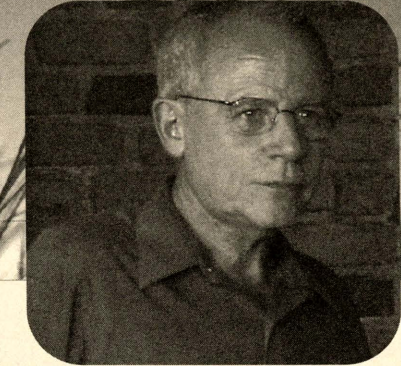
Unfortunately, his interest in the real-life physics experiment unveiling itself before him landed him in the trunk of Fickelstein's '82 Nissan Maxima.

Westmacott was cited for following too close.

Update 7/1/02: Fickelstein recovered admirably from the trauma of the accident and has moved to Dresden, Germany where she picks cherries for a living.

Richard, after several unsuccessful attempts at Village Westmacott, finally sank a well that yielded an unexpectedly large flow of water. He has also retired from teaching in the landscape architecture program at the University of Georgia. He will be greatly missed.

# A Tribute to Darrel



By Nancy Aten (MLA student)

During an evening conversation in **Darrel Morrison's** Plant Communities of the Southeast field course this spring, it was my turn to answer the "how'd you get here?" question about my studies in landscape architecture. My answer is short. Three years ago, I met Darrel.

A couple of weeks ago, I was talking to a volunteer with a land trust in Wisconsin about my studies at Georgia. "Oh, you know Darrel?", he asked. He told me he was first influenced by Darrel while attending his workshops at The Clearing in Wisconsin in the 1970s. A year ago, I met a woman on a field trip who had worked with respected botanists and native plant experts at the Morton Arboretum in Illinois. "Oh, you know Darrel?!", she asked excitedly. Two years ago at the Cullowhee Conference in North Carolina, on a field trip to Joyce Kilmer forest, I met two SED alumni. "Oh, how's Darrel? What's he working on?" were among their first questions. This spring at LABash in Philadelphia, I approached the keynote speaker, Grant Jones (FASLA, Jones+Jones), and said there were a few of us students of Darrel's who would like to say hello for him. His eyes lit up and he smiled and asked if he could join our table for dinner.

These far-reaching influences and connections are not unusual. When H.B.Owens Resource librarian **René Shoemaker** asked me to write this article, in just one day, I e-mailed a handful of his ex-students and colleagues and here is a sampling of what I heard back that same afternoon:

"In addition to Darrel's design philosophy, which has inspired many of his students to create sustainable landscapes that recognize undeniable ecological interconnections, his sense of humor makes him a "great and important guy." Where else can you see such dramatic facial expression while describing the cat that was hit in his infamous cat joke, or the slyness while talking about the nomadic Fakarwee Indian population that roamed Pisgah National Forest." (Jon Calabria, Landscape Architect, Upper French Broad Watershed Training Center Coordinator, Water Quality Group, NCSU)

"I learned a lot about landscape architecture just listening to and watching Darrel and more importantly, a lot about teaching. Darrel is charismatic in the classroom. He paints pictures with words as well as slides and really inspires students to learn. My favorite class experience was teaching our 3-week field class in which we roamed about looking at high quality natural areas. Darrel invented a great 'aesthetic inventory' tool that guides students through a series of activities that gets them to really think about and experience different sites. Combining essays, sketches, and notations about dominant forms, colors, etc. helps students really see and feel natural areas." (Evelyn Howell, Department of Landscape Architecture, The University of Wisconsin)

"As a teacher, Darrel brought inspiration and experience to us that I carry with me to this day. The value of really knowing a site- 'living' on the site in varied conditions and seasons before ever making critical design decisions

really made sense to me." (Jean Tufts, National Wildlife Federation)

"We former students stand in his shadow with appreciation. How do we capture the essence of the man in the way he asked us on field trips to capture the essence of a plant community in a sketch and/or a few words? The quick, warm smile, the endless energy and ideas, that honest Midwestern demeanor, the gentleness and earnestness of the man....He shared his knowledge, his love of nature, his connection with the land, and his heart. One that inspires us to do the same. (Bonnie Harper-Lore, Plant Community Ecologist, Federal Highway Administration, USDOT).

Darrel continues to inspire with his recent and current work -- including the committee, with Peter Raven, John Randall and others, releasing the St. Louis Declaration on Invasive Plant Species (and Draft Voluntary Codes of Conduct); Native Wisconsin Garden at the UW Arboretum; and the Storm King Art Center in New York.

In the Wild Ones Handbook, Darrel wrote: "We may help achieve the goal of sustainable landscapes -- and public demand for them -- by demonstrating that they can possess a new level of beauty derived from the richness of their lines, forms, colors, and textures, from their regional associations, and from their very productivity and sustainability."

Darrel Morrison served as Dean of the School of Environmental Design from 1983 to 1992. From 1992 to May, 7, 2002, he continued as a member of the faculty and in professor emeritus status continues to teach his favorite courses.

Darrel is currently working on a book of essays on landscapes, to be published by University of Georgia Press.

the golden mean

page 15



the golden mean

page 14

photos courtesy: CED Photo Library

By Andrew Walter (MLA student) & Mere Harr (BLA '00)

photos courtesy: CED Photo Library

# Want to send us news?

The next issue's deadline is December 2, 2002. Send e-mail to: [cednews@uga.edu](mailto:cednews@uga.edu)

# DEAN'S CORNER



by Dean John F. Crowley, III

page 16

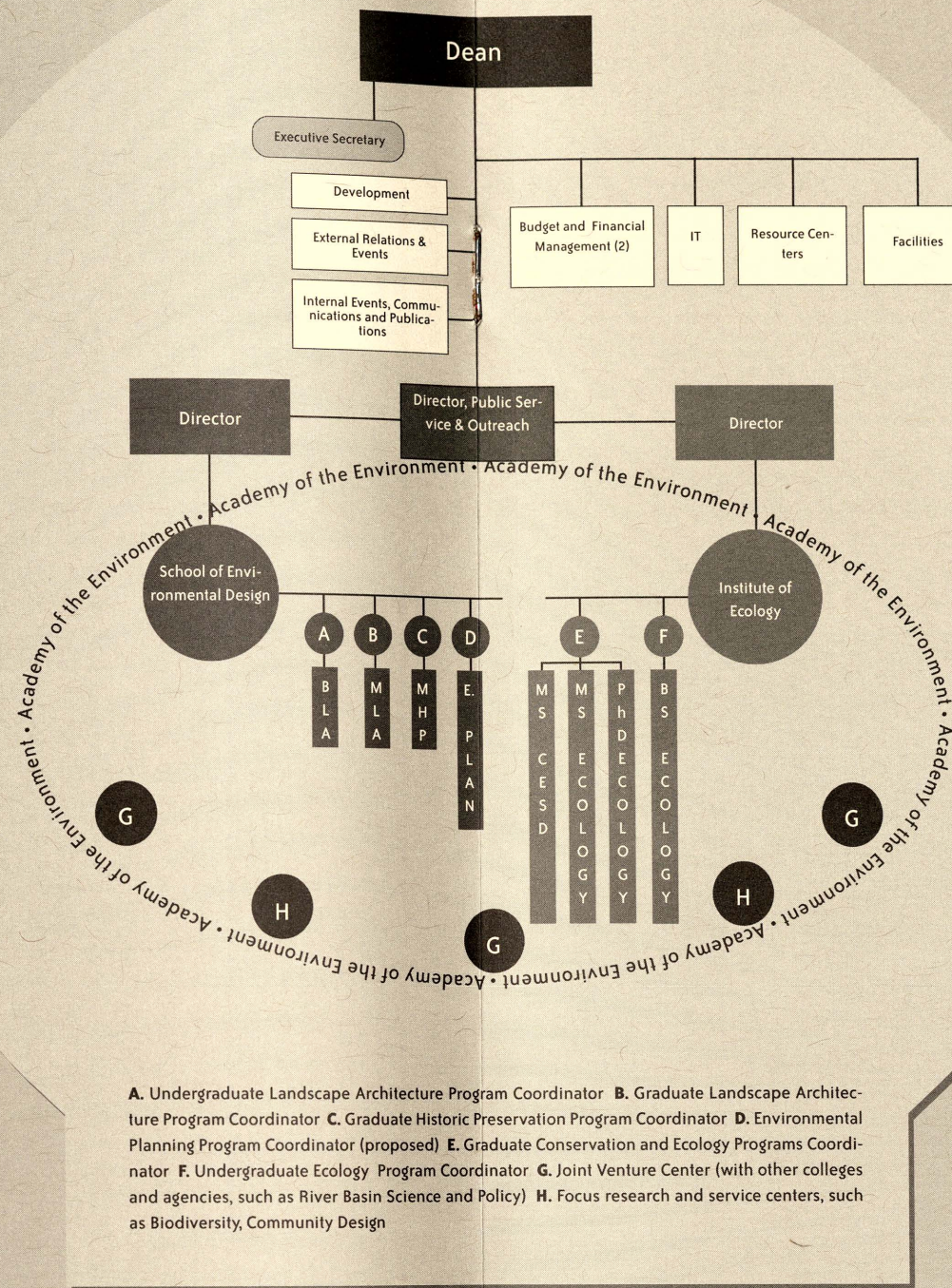
Welcome to the new College of Environment and Design! We've come a long way since my last message, and we have quite a way to go, but the prospects are exciting!

In August 2001, the Board of Regents authorized the School of Environmental Design and the Institute of Ecology to form the new College of Environment and Design (CED). Plans for a new college began when University President Michael Adams identified environmental study and the application of that knowledge toward sustainable living designs as critical issues the university had to address. Our mission now involves developing new knowledge of the natural and built environments and honing the methods for designing, restoring and protecting those environments. One promising addition to this is an "Academy" or Faculty of the Environment, which includes any faculty or experts from public or private entities who can address environmental issues and challenges. This unit also acts as an effective "lightning rod" to attract endowments, grants, and contracts for our interdisciplinary work.

The organization chart of the College is shown here. Note that the degree programs of Environmental Design and Ecology are not only virtually connected, but also positioned within the Academy. Their location within the Academy is to help the free flow of faculty and students into research and public service initiatives. Eventually all degree and certificate programs should be seamless so that both students and faculty can take advantage of all of the programs' strengths and diversities, at least in the elective and faculty exchange sense.

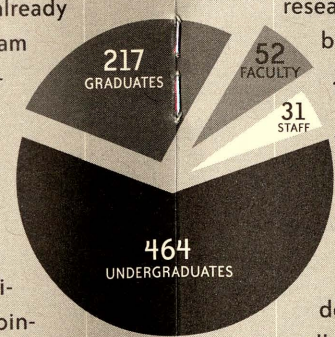
Presently, the college offers undergraduate degrees in landscape architecture and ecology. At the masters level it offers degrees in landscape architecture, conservation and sustainable development, historic preservation and ecology. At the doctoral level the College offers the ecology degree. Students can also get a joint masters and Juris Doctorate in law and historic preservation, and certificates in historic preservation, environmental ethics and conservation. As the college was formed, the university committed the financial resources to develop an environmental planning program at the masters and doctorate degree levels. This will also be a professional degree program accredited by the American Planning Association (APA). A planning PhD will be designed to accommodate students from a broad array of masters' degree programs.

Statistically the new college has 464 undergraduates, 217 graduates, 52 faculty, and 31 staff. We are also about to undergo a significant transition in faculty and staff. **Karen Porter** will retire in ecology but will remain active in research. **Darrel Morrison** and **Richard Westmacott** stepped down in landscape architecture but both will remain active in teaching. **Neal Weatherly** will retire next spring, and a number of others are looking at similar retire-



A. Undergraduate Landscape Architecture Program Coordinator B. Graduate Landscape Architecture Program Coordinator C. Graduate Historic Preservation Program Coordinator D. Environmental Planning Program Coordinator (proposed) E. Graduate Conservation and Ecology Programs Coordinator F. Undergraduate Ecology Program Coordinator G. Joint Venture Center (with other colleges and agencies, such as River Basin Science and Policy) H. Focus research and service centers, such as Biodiversity, Community Design

ment options, which allow them to continue to stay involved here. **Deanna Kent** has already retired as staff at the graduate program and **Tilda Wall** will step down in January of 2003. Tilda will stay with us in post retirement and work with the Founders House and Garden. Drs. **Pejman Rohani** and **Rebecca Irwin** have joined the ecology faculty. **José Buitrago** is joining the landscape architecture faculty and **Wayde Brown** is joining the historic preservation faculty. After six years as director of the Institute of Ecology



**Ron Carroll** will return to teaching and research and we are in the final stages of bringing a new director to the institute in July 2003. Ron directs the college's new Center for River Basin Science and Policy.

Program improvements are enabling us to add faculty to landscape architecture and historic preservation next year. We received professional degree designations for the design programs as well as approval by the regents to charge a \$300.00 per semester differential tuition. The

monies raised, which are directly returned to the college, will underwrite the hiring of three new faculty in 2003 to reduce teaching loads. We have also been successful in "splitting" a senior faculty position (retired) into two assistant professorships. As a result we can develop a list of faculty the design programs will need for the future, and seek as many as six new assistant professors next year.

The two great challenges remaining involve campus facilities and funding. Today we are packed in a cluster of north campus design buildings and a collection of south campus ecology structures. Our very successful public service and outreach program is in the overstuffed upstairs of the Founders House. New research faculty need labs and new design faculty need studios. We don't have any space for an important new generation of emeritus faculty whom we want to keep involved in the college.

The new college needs a new campus and the wait for comprehensive funding through the Board of Regents will take ten years. President Adams has indicated that, once the new art school complex is completed, the college will in part occupy a remodeled Lamar Dodd building on Jackson Street on the east side of north campus. It is in this near-downtown vicinity that we plan to build a campus "neighborhood" of smaller buildings, each of which can be funded in phases from multiple sources. The campus will include the best practices in sustainable design and will mix classrooms, offices, studios, labs, retail, open space and living spaces (live, work, learn, play) in a configuration representative of the best practices in urban design. The campus will hopefully become a laboratory in which we "practice what we preach" and lead by constructed example. This plan will be the subject of my next column.

There is great interest in the college. This has given us a chance for the first time to make proposals to individuals, corporations and foundations interested in environmental inquiry, education and problem solving. **Anne Moser** has joined us from Wheaton College near Boston to develop support for these and other exciting initiatives. **Christa Frangiamore** of ecology has "filled in" during the interim very well. Shortly we hope to announce successes in sustainable funding.

These visions, these successes and potentials of what we can do gets me pumped up to begin each day. I hope you are as proud of our accomplishments and excited about our future as I am!

WANT TO LEARN MORE ABOUT YOUR COLLEGE? DEAN CROWLEY WILL GIVE A STATE OF THE COLLEGE ADDRESS 3:00 P.M. AUGUST 28, 2002 AT THE CHAPEL, NORTH CAMPUS RECEPTION TO FOLLOW IN THE FOUNDERS MEMORIAL GARDEN

page 17



*Robert E. Marvin*  
**LANDSCAPE ARCHITECT**

**Robert Earl Marvin** (MLA '49) died June 25, 2001. Marvin graduated from Clemson University in 1942 with a degree in horticulture and was a member of the 1949 graduate class in the School of Environmental Design. He worked as a landscape architect for 50 years. Marvin was a native of the South Carolina lowcountry and his life was linked to the agrarian tradition of the south with a profound tie to the southern landscape. In 1947, Marvin established Robert E. Marvin and Associates in the backwater town of Walterboro near the South Carolina coast. "When I started out the South was still poor and

broken," Marvin said in an interview with J. William Thompson for an article published in *Landscape Architecture Magazine* in June 1997. "We hadn't had enough money to mess it up." This meant that the vast tidal marshes, cypress swamps, and clear, slow-flowing rivers were remote from development pressures and still relatively pristine, Thompson wrote. "But I was convinced that the South was going to become wealthy within my lifetime and that it could be destroyed by development," Marvin said. "I dedicated my career to saving the South through proper planning."

"We need to knock the walls down and let nature in again. The environmental

movement proves that man needs to get out of his box that technology has created. He needs to wrap his arms around nature," Marvin said.

His firm's South Carolina projects include: Sea Pines Plantation on Hilton Head Island, Glencarin Gardens in Rockhill, the State Capitol grounds and Finlay Park in Columbia, and Brays Island Plantation near Beaufort. He was involved in several projects at Callaway Gardens in Georgia including the butterfly conservatory.

Marvin posthumously received the ASLA Medal from the American Society of Landscape Architects. The ASLA Medal is the society's highest honor.

*Ted Elliott*  
**ECOSYSTEM SCIENTIST**

**Dr. Ted Elliott** (Ph.D. ecology, 1982) passed away Friday evening, June 7, 2002, after battling cancer for the past year. Ted was an internationally renowned ecosystem scientist whose work provided several important advances in ecology and soil science.

Ted earned his bachelor's degree in soil science at Colorado State University (CSU) in 1977, his master's degree in soil chemistry/microbiology at Colorado State University in 1978, and his Ph.D. in ecology at the University of Georgia in 1982.

Ted first joined the Natural Resource Ecology Laboratory (NREL) in 1973 working as a technician in the field and laboratory. Over the years, he became a highly successful NREL scientist and later served as associate director of NREL, beginning in 1993. Although he left two years ago (June 2000) to assume the directorship of the School of Natural Resources at University of Nebraska, CSU and NREL remained close to his heart.

Ted's love of nature inspired the pursuit of his career, and his passion for his work led to his many academic achievements. His greatest gift was his love for his wife and family. His family, many friends, and colleagues will dearly miss him. He asked "...not to have a funeral, but rather a celebration" in Ft. Collins with his friends and colleagues.

Survivors include his wife, Kathy, Lincoln, NE; son, Graham, Glendale, CA; son and daughter-in-law, Nathan and Heather, Fort Collins, CO; mother, Nancy, Neenah, WI; father and step-mother, Ted Sr. and Charlotte, Neenah, WI.

Ted had requested that in lieu of flowers, etc., donations be made in his honor to the Natural Resource Ecology Laboratory (Nancy Gus, NREL, Colorado State University, Fort Collins, CO 80523-1499) or to the University of Nebraska Foundation (School of Natural Resource Sciences, University of Nebraska-Lincoln, 302 Biochemistry Hall, Lincoln, NE 68583-0758). For further details, contact Laurie Richards (laurie@nrel.colostate.edu).

the golden mean  
page 18

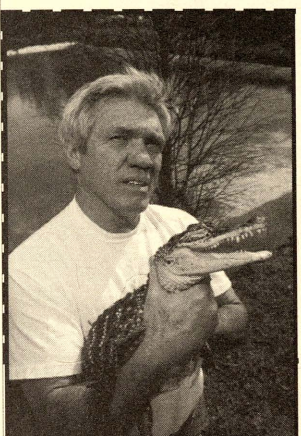
compiled by  
Laurie Anderson

**INTHE NEWS**

Note: All reports occurred in 2002, unless otherwise indicated.

The June 2002 issue of *Discover* magazine features research by ecology adjunct/courtesy faculty member **Justin Congdon** on the life cycle of turtles. ([http://www.discover.com/june\\_02/featturtle.html](http://www.discover.com/june_02/featturtle.html))

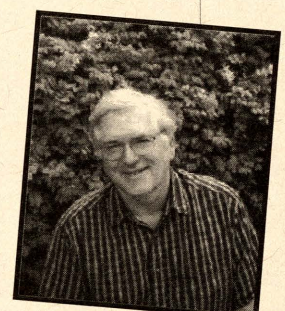
Knight-Ridder newspapers carried comments made by ecology affiliate faculty member **Cham Dallas** on various nuclear issues this past May and June. In different articles, Dallas was quoted on the potential effects of a nuclear war between India and Pakistan, his belief in the low risk of transporting nuclear waste materials, and the effects of detonating a "dirty bomb." The comments appeared in the *San Jose (CA) Mercury-News*, *Boston Globe*, *Detroit Free Press*, *Salt Lake Tribune*, *Miami Herald*, *Kansas City Star* and *Seattle Times*, among others.



Whit Gibbons

Ecology faculty member **Whit Gibbons** was featured in an *Augusta Chronicle* article on cottonmouth snakes in early May ([www.augustachronicle.com/stories/050502/out\\_pavey.shtml](http://www.augustachronicle.com/stories/050502/out_pavey.shtml)).

*Scientific American* featured ecology adjunct/courtesy faculty member **Steve Hubbell**, botany, in an April 29th interview (see [www.sciam.com/article.cfm?articleID=000D401A-8D9D-1CDA-B4A8809EC588EEDF](http://www.sciam.com/article.cfm?articleID=000D401A-8D9D-1CDA-B4A8809EC588EEDF)).



Steve Hubbell

The work of the Georgia Land Use Trends project, a GIS-mapping project overseen by ecology professors **Liz Kramer** and **Jim Kundell**, was featured in a February 3rd article in the *Athens Banner Herald* and in a May 21st article in the *Augusta Chronicle*. The project shows the rate and extent of urban sprawl and wetlands loss in Georgia from 1974 to 1998. The stories may be seen online at [http://www.onlineathens.com/stories/020302/new\\_0203020058.shtml](http://www.onlineathens.com/stories/020302/new_0203020058.shtml) and [http://www.augustachronicle.com/stories/052102/tec\\_151-5311.000.shtml](http://www.augustachronicle.com/stories/052102/tec_151-5311.000.shtml).

ABC-TV's "Good Morning, America" and ABC News.com featured ecology affiliate faculty member **David Lewis** discussing his study of hour disease is transmitted via medical implements ([www.abcnews.go.com/sections/living/DailyNews/dirtyscopes020418.html](http://www.abcnews.go.com/sections/living/DailyNews/dirtyscopes020418.html)).

photos: courtesy UGA News Services

**BLA Student dies in Italy**

By Jane Link

Third year BLA student and Presidential Scholar **Whitney Mason Boyer**, 20, of Atlanta, died August 1 in Italy from injuries she sustained when she slipped and fell while climbing a cliff in a recreational area near Cinqueterre on the Mediterranean coast. Boyer was taking a break with fellow students from a study-abroad program in Innsbruck, Austria, sponsored by the University of New Orleans.

Landscape architecture professor **William Mann** had Boyer as a student in his class, History of the Built Environment. "She was wonderful, so happy, so pleasant, so eager. I remember her as an exceptionally friendly person," he said.

"From all the preliminary evidence, this was a very sad accident," said Larry Dendy of UGA's Communication Office.

Mark Lusk, UGA's associate provost for international affairs, said he believed that this was the first time a UGA student has died during a study abroad program.

Boyer's funeral was held August 9 at Peachtree Methodist Church in Atlanta. A memorial was held also for her in Innsbruck on August 6.



Late February issues of *USA Today* and the *Los Angeles Times* carried news about a study of fossilized fish bones conducted by ecology affiliate faculty member **Betsy Reitz**, anthropology, and other scientists. The research indicates that archaeological materials can be used to document coastal climate change, and that the mid-Holocene climate was not stable, as some have thought. The climate change, which occurred about 5,000 years ago and was reflected in fish bones known as otoliths, coincides with the development of native Andean culture. The study was presented in the Feb. 22nd issue of *Science* ([www.sciencemag.org/content/vol295/issue5559](http://www.sciencemag.org/content/vol295/issue5559)).

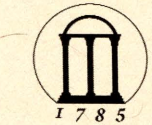
**John Pickering**, ecology, was quoted this past spring in a *Newark Star Ledger* report on the All-Taxa Biodiversity Inventory of the Great Smoky Mountains National Park ([www.discoverlife.org](http://www.discoverlife.org)). Pickering commented on the slow rate at which the biota census was being conducted.

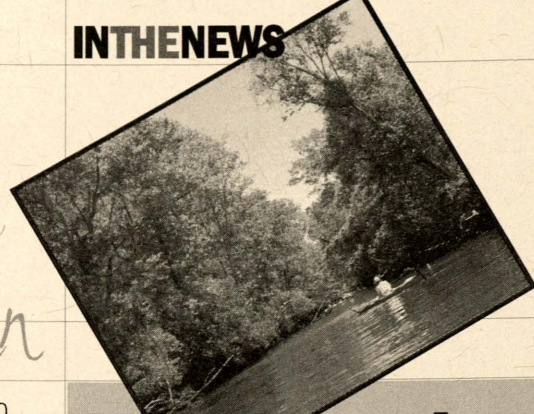
Research by ecology professor **James Porter** and doctoral student **Kathryn Patterson** indicating that human waste bacteria is killing Caribbean corals was reported widely in June by *ABC News*, *Associated Press*, *Chicago Tribune*, *Miami Herald*, *CBS News*, *Philadelphia Inquirer*, and others. (see page 20).

A photo of doctoral ecology student **Olga Tsusko** working at the Savannah River Ecology Lab (SREL) helped illustrate a May 31st *Augusta Chronicle* article on Chernobyl-related radiation research (see [www.augustachronicle.com/stories/053102/tec\\_140-6977.000.shtml](http://www.augustachronicle.com/stories/053102/tec_140-6977.000.shtml)).

**Seth Wenger**, a policy analyst with the Institute of Ecology's public service and outreach office, was quoted in an April 29th *Athens Banner-Herald* story on county growth rates and the impact on urban planning. ([www.onlineathens.com/stories/043002/new\\_20020430009.shtml](http://www.onlineathens.com/stories/043002/new_20020430009.shtml)).

the golden mean  
page 19





the golden mean

page 20

photos courtesy: Philip Juras

## The Altamaha: Georgia's Watershed

On June 30th, "The Altamaha: Georgia's Watershed," a locally-produced radio documentary which aired on WUGA-FM (91.7), won a 2002 Gabby Award for Best Radio Documentary from the Georgia Association of Broadcasters (G.A.B.). It won in the mid-size "100,000 to one-million listener market share" audience category (see <http://www.gab.org/Awards.html>).

The hour-long broadcast travels the Altamaha watershed from its source in northeast Georgia to the Atlantic Ocean and features the voices of numerous Institute of Ecology personnel.

Contact producer David Bryant ([bryantd@uga.edu](mailto:bryantd@uga.edu)) for information on the availability of copies.



# Coral Killer discovered

From reports by the UGA News Bureau and the Miami Herald

Populations of the shallow-water Caribbean elkhorn coral in the Florida Keys, *Acropora palmata*, are being decimated by white pox disease. A team of scientific investigators, led by UGA researchers **Jim Porter** and **Kathryn Patterson** (MS, CESD, '98), has identified the common fecal enteric bacteria, *Serratia marcescens*, as the cause of white pox.

The source of the bacteria that is killing the coral is still under investigation, but it can be found in the intestines of humans and other animals and its identification bolsters the theory that sewage is killing North America's only living shallow water reef, which has shrunk by more than a third in the last six years. The Florida Keys National Marine Sanctuary, site of the research, protects 2,896 square nautical miles of marine life, including elkhorn coral.

News of the research was published in June in the *Proceedings of the National Academy of Sciences*, was carried by numerous agencies (see In The News, page 19). The project is supported by the National Oceanic and Atmospheric Administration (NOAA) and the U.S. Environmental Protection Agency (EPA).

"These are the giant redwoods of the reef," James Porter, research team leader, told reporters. "What used to be the most common coral in the Caribbean has now been recommended for inclusion on the endangered species list."

The disease was first documented in 1996 on Eastern Dry Rocks Reef off Key West, FL. and exclusively affects the elkhorn coral. According to Porter and Patterson, this disease has already killed more than 98 percent of the elkhorn coral on some reefs near Key West. It infects the thin layer of living tissue on the hard coral skeleton and spreads as a whitish open wound quickly -- eating as much as three inches in a day, making it among the most lethal coral killers known. It can cover an entire reef in about a year, Porter said. The disease effects, compounded with additional stressors such as recent hurricanes, coral bleaching and ship groundings, have caused elkhorn coral populations to crash.

"When we started this research, we assumed that we were dealing with an undescribed marine pathogen. We had no idea that the culprit would turn out to be one of the most common bacteria known to man," said Porter. White pox-affected coral has been found all over the Caribbean including Florida, the Bahamas, the U.S. Virgin Islands, and Caribbean Mexico.

For details, see <http://www.uga.edu/news/specialreport/porter.html> and [http://abcnews.go.com/wire/SciTech/reuters20020617\\_417.html](http://abcnews.go.com/wire/SciTech/reuters20020617_417.html).

An abstract of the report can be viewed at [www.pnas.org/cgi/doi/10.1073/pnas.092226099](http://www.pnas.org/cgi/doi/10.1073/pnas.092226099).

## students & faculty slice through georgia

by Brian LaHaie

This summer, a group of students and faculty were working to find order and authenticity on US Highway 441. The project is funded by a Transportation Enhancement grant from the Georgia Department of Transportation. Faculty **Brian LaHaie**, **Judith Wasserman** and **Henry Parker** are working with approximately a dozen graduate and undergraduate students in the School of Environmental Design to develop a Geographic Information System (GIS) database and heritage tourism plan for the 441 corridor. The highway has been designated "Highway 441- Georgia's Heritage Highway" by the Georgia General Assembly. The road slices North to South spanning the entire length of Georgia for a distance of over 350 miles. **Liz Kramer**, a GIS specialist from the Institute of Ecology, is assisting in the creation of the database and spatial mapping components of the project.

In addition, the study group will develop a planning document, PowerPoint presentation, and brochure focusing on preserving and enhancing the unique Georgia landscapes along the roadway. The teams are focusing on recognizing the unique natural, historic and scenic resources available to tourists as they travel the state on this historic green ribbon. From scenic north Georgia mountains to the Okefenokee swamps, Highway 441 highlights the state's ecological diversity, scenic splendor and historic fabric.

This project is one of several corridor strategies that the school has participated in, including: the production of Georgia Scenic Byways Program Design Manual, a greenspace and corridor planning project in Jackson County, documentation related to designating the Scenic Byway in Jasper County, a US 17 Corridor Study along Georgia's Coast, and a study of the GA 316 corridor between Athens and Atlanta. All these projects position the new College in an advantageous place related to corridor planning and roadway enhancements in the state.

## San Antonio Forum 2002

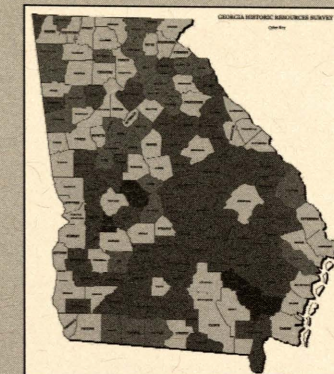
National Alliance of Preservation Commissions

**Forum 2002** The National Alliance of Preservation Commissions (NAPC) held the third biennial forum in San Antonio, Texas, August 1-4.

Over 400 participants from preservation commissions across the country attended the forum. Dean Jack Crowley served as master of ceremonies during the forum and reflected on his work that helped make San Antonio the tourist draw it is now. The forum is designed to support and educate preservation commissioners, local preservationists and planning staff through a series of roundtable discussions and interactive sessions on preservation issues including: The Impacts of Demolition and Economic Hardship; Gentrification in Low-Income Historic Districts; Dealing with Economic Disasters; and Generating Media and Political Support.

### new contract

**Pratt Cassity**, co-director of Public Service and Outreach, was awarded a five-year, \$750,000 contract with Georgia Transmission Corporation (GTC). The contract, titled "Find It!: Georgia Historic Resource Survey Partnership", is part of a new programmatic agreement partnering GTC, the Georgia Department of Natural Resources Historic Preservation Division (SHPO), the Advisory Council on Historic Preservation (ACHP), the U. S. Rural Utilities Service (RUS), and the University of Georgia (UGA). Under the agreement, transmission projects that comply with Section 106 federal requirements to "avoid, minimize or mitigate adverse impacts" to historic properties will receive expedited review from the SHPO. Additional responsibilities delegated to GTC will further streamline the environ-



- No survey in database
- Needs resurvey - low priority
- High priority for resurvey
- Adequate survey in database

mental review process. "Under the programmatic agreement, GTC will fund a multi-year project to help the SHPO identify valuable and eligible historic properties throughout the state." The SHPO is responsible for identifying cultural resources and for nominating eligible properties to the National Register of Historic Places. As part of the agreement, GTC will fund research to identify, survey and inventory the state's cultural resources. The Office of Public Service and Outreach will conduct the surveys.

GTC is a not-for-profit cooperative that provides electric transmission service to 39 EMCs throughout Georgia. GTC is owned by these 39 EMCs, who in turn are owned by the customers they serve. For 23 years, GTC was a part of Oglethorpe Power Corporation, before becoming a separate cooperative in 1997.

This project is being hailed as one of great innovation and will be used as a model for other SHPOs and university programs.

the golden mean

page 21



# working in Plains Georgia

UGA's CED and President Carter

President and Mrs. Carter serve as members of the community's Better Hometown Program board and have invested their own time and money into rehabilitating several buildings in downtown Plains. UGA partnered with the City of Plains and the Carters to conduct two interesting projects this year: the "Your Town: Designing Its Future" workshop and the Plains Inn and Antiques buildings.

## Your Town: Designing Its Future

**Pratt Cassity**, Office of Public Service and Outreach, the National Endowment for the Arts (NEA), and the National Trust for Historic Preservation (NTHP) sponsored a "Your Town: Designing Its Future" workshop in Plains, Georgia, January 17 - 20. "Your Town" is a rural design workshop developed by the NEA, the NTHP and the State University of New York (SUNY) landscape architecture program. "Plains Your Town 2002" focused on preservation and heritage issues facing African Americans in the South. These issues include affordable housing, grassroots organizing, community fundraising, the preservation of historic structures, perpetuating unique cultures and traditions, and cultural tourism. Thirty-three participants from Georgia and Alabama took part in the workshop. President Jimmy Carter spoke to the group about his experiences growing up in the small community of Archery just outside of Plains.

## Plains Inn and Antiques

The Certified Local Government Program, which is housed in the Public Service and Outreach office, provided landscape design assistance for President and Mrs. Carter's Plains Inn and Antiques in downtown Plains. In cooperation with Bill Russell, Economic Development Specialist at UGA's Business Outreach Services, and at the request of the Carters, a design team conducted field work in early March. **Pratt Cassity**, **Anne Riley** (MLA '02), **Jennifer Lewis** (MHP '02), **Christine Laughlin** (MHP '01) and **Eleonora Machado** (MLA '01) completed landscape plans for the courtyard between the rear of the Inn and the Plains Community Center.

The design for the courtyard is simple and features an outdoor seating area for the Plains Tea Room, paving that looks like Georgia red clay, and plant selections that are favorites of Mrs. Carter and reflect the region's character.

During the ribbon cutting ceremony for the new Inn, President Carter thanked the University for helping Plains and for CED's contributions to the Plains Inn & Antiques.

News from Ecology & Environmental Design



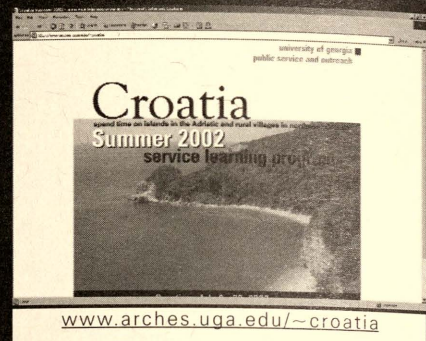
photo by Pratt Cassity

the golden mean



photo by Barrie Collins

# Service Learning in Croatia



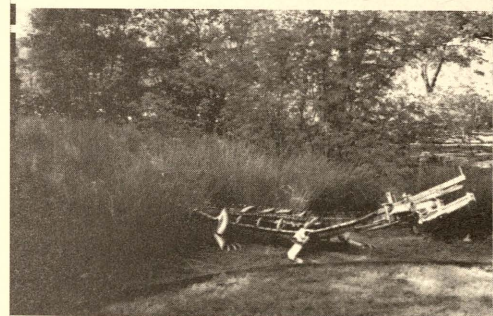
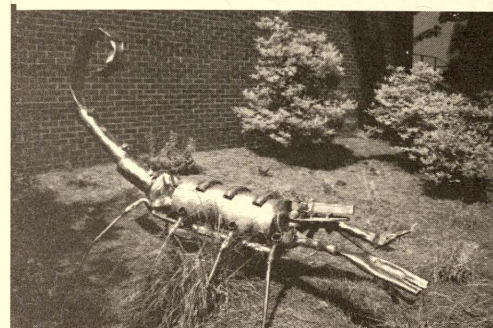
**Pratt Cassity**, Public Service and Outreach, Rusty Brooks, Center for International Democratic Governance at the Institute of Government, Andrew Herod, Department of Geography, and Jennifer Frum, International Public Service and Outreach, took 10 students to Croatia July 6 to 30, 2002 for a service learning studio focusing on developmental issues in the tourist-based economy. Areas of study included: Croatian history and culture from Roman times to the post-Yugoslavia period; current economic, social, and political controversies in the "new Europe," and their historical contexts; historic resource documentation and rehabilitation strategies; regional development and the implications of globalization on emerging economies; ethnic and sociological issues related to rural depopulation; heritage tourism, the economic benefits of historic preservation, and compatible design within historic areas; and issues of sustainability in land development and architectural design. The program focused on issues in two distinct regions, the heavily visited tourist regions of the Adriatic Islands and the less popular mountainous region north of Zagreb. This project follows on the heels of the Summer Service Learning Studio that was conducted in Ghana in 2001.



# METAL menagerie

by Laurie Anderson

"Metal Menagerie," an installation of sculptures by Doug Makemson, was on view on the grounds in and around the ecology and forest resources buildings April - June, 2002. The sculptures, which use discarded machinery parts to form reptiles, birds and mammals, were strategically placed in natural environments, where they were greatly enjoyed and occasionally startled visitors. The outdoor exhibit was sponsored by the Georgia Museum of Art, the Institute of Ecology and the Warnell School of Forest Resources.



compiled by Jane Link, from reports by the Morris News Service and Atlanta Journal-Constitution

UGA ecologists are playing an increasingly important role with the Maquipucuna Foundation in northwest Ecuador. The Foundation is a locally run, nonprofit organization dedicated to preserving wildlife and promoting sustainable economic development within and around the 15,000-acre reserve, one of the most biologically diverse regions in the world.

One project UGA researchers are helping the foundation with is expanding the cultivation of organic coffee. The sale of shade-grown coffee in Georgia and beyond will profit the foundation and residents living on or near the rainforest, giving them a sustainable alternative to hunting or timber cutting.

"We're integrating native trees in with the coffee," said **Ron Carroll**, the director of UGA's Institute of Ecology. "It really does better in shade conditions. They don't have to spend the money on pesticides and fertilizer. They get pretty good yields, and they get a better profit margin."

Other ongoing collaborations include organic chocolate production and the development of bamboo farming in lieu of timber cutting. Anthropologist and ecology adjunct/courtesy faculty member **Ted Gragson's** research is measuring the impact of human activity on wildlife, and a project with the Atlanta Botanical Garden is under way to preserve rare orchids. Co-director of UGA's Center for Latin American and Caribbean Studies (CLACS) **Fausto Sarmiento** (Ph.D. ecology '96) introduced the garden's staff to Maquipucuna 10 years ago.

UGA plant ecologist **Carol Hoffman**, who develops and teaches environmental learning programs in Georgia, now organizes similar educational programs in Ecuador. In a collaborative effort with the State Botanical Garden of Georgia, she has developed rainforest ecology field programs for Ecuadorian teachers and schoolchildren. Children from local towns as well as from Ecuador's capital city of Quito visit the Maquipucuna Reserve to investigate the unique plants and animals found there. She hopes this will increase local understanding of and appreciation for the rainforest ecosystem, which will translate into Ecuadorian support for its preservation.

"It's very unusual for an institution to get involved on such a large scale," said Ron Carroll.

In between fund-raising and promoting ecotourism at Maquipucuna, foundation president **Rodrigo Ontaneda** travels back and forth from Ecuador to Georgia, building a U.S. market for the coffee that will help preserve trees, insects and bird life. Ontaneda's wife, **Rebecca Justicia**, is working on her Ph.D. in ecology at UGA. No other university is so involved on an ongoing basis," said Mr. Ontaneda.



the golden mean



## UPCOMING EVENTS

by Jane Link

### State of the College Address

Dean John F. Crowley will give the first inaugural "State of the College" address at the Chapel on UGA's north campus at 3:00 p.m. on August 28th. A reception will follow in the Founders Memorial Garden.

### ASLA Annual Meeting

This year's American Society of Landscape Architects (ASLA) annual meeting will be held October 18-21 in San Jose, California. Join alumni, faculty, and students at our alumni reunion reception on Friday evening October 18 from 8 PM to 10 PM. The reception site is listed as Parkside Hall, but please verify upon arrival in San Jose. Dean Jack Crowley and other faculty will be on hand to discuss the exciting activities under way with the new College of Environment and Design.

### LARE Review

April 2003 is the 30th edition of the Georgia Landscape Architecture Registration Exam (LARE) review. The LARE review is sponsored by the Georgia chapter of the American Society of Landscape Architects (ASLA) and the College of Environment and Design (CED). The LARE review initially attracted regional people seeking certification, but the review is now nationally recognized with students coming from the northeast and the midwest. Review instructors this year include CED faculty: **William Beery**, associate professor emeritus of landscape architecture; **Bruce Ferguson**, SED director; **David Nichols**, associate professor; **Ron Sawhill**, temporary instructor; **Scott Weinberg**, professor and coordinator of the bachelor of landscape architecture program; **Neal Weatherly**, associ-

ate professor; and alumni **Laura Gaynor** (BLA '82) and **Richard Owens** (BLA '76).

### MHP Celebrates 12th Anniversary

The School of Environmental Design's master of historic preservation (MHP) Program will celebrate its 12th anniversary with a reception during the National Trust for Historic Preservation's National Preservation Conference in Cleveland, Ohio, Oct. 8 - 13. The reception will be a joint Sigma Pi Kappa/UGA Reception and is planned for October 11 from 6:30pm-8:30pm. "This will be an opportunity for alumni and students to celebrate the beginning of the MHP Program in Fall 1982," said John Waters, professor and coordinator of the MHP Program. Look in the conference program for the reception location.

**Analysis and Management of Animal Populations** by ecology adjunct/courtesy faculty member **Michael J. Conroy** (forest resources) Byron K. Williams and James D. Nichols, was published by Academic Press in April. The book integrates population modeling, parameter estimation and decision-theoretic approaches to management by emphasizing the role of mathematical modeling.

**Business Law for Landscape Architects** by **William Beery**, CED associate professor emeritus, **John F. Crowley**, CED dean, **E. Neal Weatherly**, CED associate professor, Robert E. Hoyt, department head of risk management and legal studies and real estate, and Robert G. Boehmer, associate provost of institutional effectiveness, was published in 2002 by Pearson Custom Publishing, Boston, Massachusetts, and edited by Beery.

**Diccionario de ecología: Paisajes, conservación y desarrollo sustentable para Latinoamérica** by ecology adjunct/courtesy faculty member **Fausto O. Sarmiento**, is an updated edition of environmental terminology targeted towards professionals and students of landscape ecology, published by Ediciones Abya-Yala, Quito, Ecuador. An online version is available at : <http://ensayo.rom.uga.edu/critica/ecologia/diccionario>

**The Guide to Plants in Savannah's Squares** The Office of Public Service and Outreach (PS&O) published a book in June that will aid Savannah Park and Tree field supervisors in the location, identification, and maintenance of existing plant material found in the Historic Squares of Savannah, Georgia. Historic Savannah Foundation contracted with PS&O to produce the manual. The manual was written by **Michael Kidd** (MLA '01) in conjunction with **Marianne Cramer**, assistant professor of landscape architecture, **Amy Moore** (MLA '02) and **Pratt Cassity**, co-director of PS&O.

**Ten Thousand Years From Eden** by ecology affiliate faculty member Charles H. Wharton, is available from WinMark Publishing. In it, Dr. Wharton puts into historical perspective the evolution of human diet and the changes in health which the modern diet has wrought.

**Wrightscapes: Frank Lloyd Wright's Landscape Designs** by Professor Emeritus of Landscape Architecture Charles Aguar and his wife, Berdeana, is the first book to examine the landscape designs of Frank Lloyd Wright. "Wrightscapes is a comprehensive and intriguing look at the works of Frank Lloyd Wright from the outside," wrote Dean Jack Crowley in the book's forward. "It provides a view from the perspective of his designs in settings or landscapes. Charles and Berdeana Aguar's approach is to view him as a planner and more commonly as a landscape architect." The Aguars traveled 10 years documenting 157 sites in 22 states, photographing, and conducting interviews with Wright's apprentices and several interviews with Wright. Aguar died in 2000 and Wrightscapes was published posthumously by McGraw-Hill in 2002.

## SOCIAL

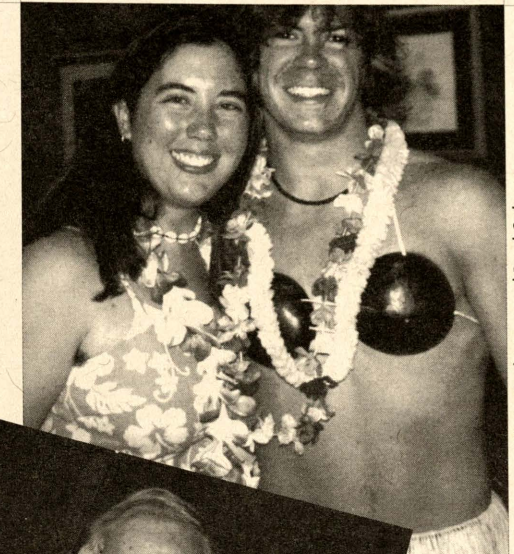
# SPRING FLING

by Laurie Anderson

Ecology's annual Spring Fling & Awards Banquet was held on April 26th this year at Flinchum's Phoenix. Dinner was catered by Gourmet to Go and included fresh spinach salad with citrus and avocado, chicken curry over basmati rice, Thai peanut noodle salad, vegetarian egg rolls with dipping sauces, pineapple cobbler and fruit punch. Music was provided by the band Tropical Breeze. Food, dance, drink, camaraderie and the occasional limbo contest kept about 175 guests happily entertained. Attendees also sported loud Hawaiian shirts and plastic leis in an attempt to win "Most Outrageous Outfit," but the prize went to Brad Ogle, who wore a grass skirt and coconut-shell top. More awards are detailed in the Faculty, Staff and Student News sections (pages 11, 26 and 27). Institute Director **Ron Carroll** received a standing ovation for his work over the past year. **Janice Sand** also received enthusiastic applause for putting the whole thing together. Thanks, Janice! Photos of this year's event can also be seen online at [www.ecology.uga.edu/springfling02.html](http://www.ecology.uga.edu/springfling02.html).



Dr. Ron Carroll addresses the crowd at Spring Fling 2002



the golden mean

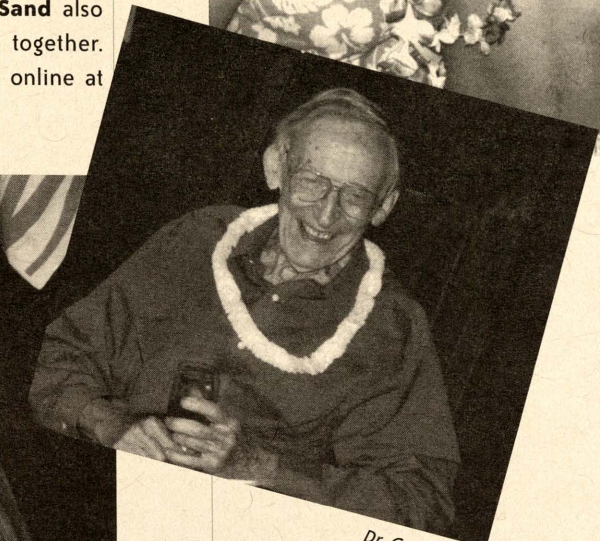
page 25

Tricia Rodriguez and Brad Ogle

photos by: Janice Sand



Misha Boyd and Raysun Goergun



Dr. Gene Odum

## "GREAT FUN" SIGMA PI KAPPA BARBEQUE

by Jane Link

The ALPHA chapter of Sigma Pi Kappa Honor Society held its 8th Annual Barbecue Luncheon April 25 in the Founders Memorial Garden. Proceeds from the event totaled approximately \$400 and will benefit chapter activities. It also marked Historic Preservation month in Georgia and at UGA. Over 60 students, guests, faculty and alumni enjoyed the barbecue in the garden. The menu included slaw, stew and tea. Vegetarian plates were also available. The barbecue was organized and executed by **Kay Stanton** (2nd year MHP), **Meredith Temples** (MHP '02), **Paige Wojcik** (2nd year MHP), **Nell Ziehl** (2nd year MHP), **Drane Wilkinson** (2nd year MHP), **Kevin Chastine** (MHP '02), **Rob Crawford** (MHP '02) and **Donna Gabriel**, senior administrative secretary in the graduate office in Denmark Hall.

"It was great fun," Ms. Gabriel said. "People just sat on the wall and chatted the afternoon away."



## STAFF NEWS

## New Hires

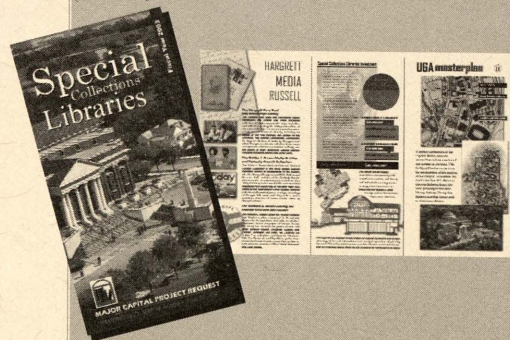
**Donna Gabriel** began work August 2001 as a senior administrative secretary in the SED graduate office in Denmark Hall. She worked previously in Terry College of Business in MBA Admissions.

## Awards

Ecology Employee of the Year went to **Laurie Anderson**. Laurie co-edits the CED newsletter *The Golden Mean*. She has been with the Institute since 1994.

**Misha Boyd** was honored by ecology graduate students with the Purple Heart Award, given annually to the faculty or staff member who has gone "above and beyond the call of duty" to be of assistance. Misha anchored ecology's front office and recently became ecology undergraduate degree program assistant.

Graphics Specialist **Eleonora Machado** won *Landscape Architecture Magazine's* Design Award for Excellence in Communication and Marketing. *Landscape Architecture* is a nationally distributed magazine. Eleonora won in the brochur and web design categories for an entry featuring Ghana Studies Abroad. Eleonora Machado also designed the brochure for President Adams' Major Capital Project Request presentation for the Board of Regents last June 2002 (Special Collections Library).



## RETIREMENTS

photos courtesy: CED Photo Library



After more than 25 years at the helm of the School of Environmental Design graduate programs, **Deanna Kent** retired October 1, 2001. At her retirement her position was senior administrative secretary. She was the center of operations for both graduate students and graduate coordinators. She is an extraordinary individual whose interest and concern for the welfare of students and faculty were the hallmark of her career at the School. Deanna began work with the School in November 1976 and, with the initiation of the historic preservation program, set up her office in Denmark Hall in Fall 1983 to serve both programs, landscape architecture (LAR) and historic preservation (HP). Graduate coordinators during Deanna's tenure were **Robert P. Nicholls, Richard Westmacott, Ian Firth,**

**Bruce Ferguson, Allen Stovall, and John Waters.** Deanna is enjoying her retirement with her husband, her family, and grandchildren.

**Tilda Wall** will be retiring January 1, 2003 after 33 years at the University. Tilda is administrative specialist for the College. Tilda has served the School



of Environmental Design through four deans: **Robert Nicholls, Darrel Morrison, Kerry Dawson and John F. Crowley.** She has been instrumental in carrying through the merging of the two units into the College of Environment and Design. She has been the administrative anchor for the school, and her vast knowledge of policies, procedures, facts, figures, dates, etc. will be greatly missed when she retires. She has been a devoted employee and has always worked for the betterment of the faculty and staff involving all sorts of issues over the years. On the personal side, Tilda will be greatly missed by the faculty and staff of the School of Environmental Design because of so many lasting friendships cultivated through the years. She has certainly earned this retirement

and we wish her only the best for the future.

## STUDENT NEWS

School of Environmental Design and Institute of Ecology NEWS

## SCHOLARSHIP RECIPIENTS

## American Society of Landscape Architects, Georgia Chapter

Melinda L. Copeland (4th year BLA)  
Stella R. Wiggins (4th year BLA)

## ERDAS Scholarship for GIS Studies

Kyle S. Phillips (4th year BLA)

## John Walter Eubanks Merit Scholarship

Robert H. Scott (3rd year BLA)

## Garden Club of Georgia Cherokee Rose Scholarship

Philip M. Herrington (2nd year MHP)

## Garden Club of Georgia Hubert B. Owens Scholarship

Micah S. Lipscomb (3rd year MLA)

## Georgia Trust for Historic Preservation Scholarship

Kay S. Stanton (2nd year MLA)

## Robert J. Hill Scholarship

Patrick M. Johnson (4th year BLA)  
Ryan J. McCrary (3rd year BLA)

## John Linley Scholarship

Philip M. Herrington (2nd year MHP)

## Randolph and Helen Marshall Scholarship

Meredith B. Muse (4th year BLA)  
Evan M. Thibeault (2nd year MLA)

## Hubert Bond Owens Landscape Architecture Scholarship

Catherine L. Callahan (4th year BLA)  
Melanie L. Graham (4th year BLA)  
Charlie B. Neely (4th year BLA)

## Peachtree Garden Club Neel Reid Scholarship

Richard G. Jones, III (4th year BLA)  
Todd M. Peaster (4th year BLA)  
Daniel C. Holz (4th year BLA)  
Sarah R. Leeper (4th year BLA)

## School of Environmental Design Scholarship

Vanessa D. Bernstein (2nd year MLA)  
**Brooks Wigginton Scholarship**  
Joy D. Long (2nd yr MLA)

**Arlena Wartell**, ecology doctoral student, received a grant-in-aid scholarship from the Highlands Biological Station, Highlands, NC. Arlena was also named their Thelma Howell Scholar for 2002.

## ASSISTANTSHIPS/ INTERNSHIPS

## William Lawrence Manning Knox Graduate Assistantship

Melissa A. Knauer (2nd year MLA)

## Second Year University-Wide Assistantship (continuation)

Chris Anderson  
Alex Reynolds  
Elizabeth Suddeth  
Cecile Torres  
Beth Tyler

## Howell S. Stone Memorial Internship

Adrian L. Chellis (4th year BLA)

## TEACHING ASSISTANTS

## RECOGNIZED

## Outstanding Teaching Assistants Award

Cory Christopher (MS ecology student)  
Jessica Seares (MS CESD student)  
Joshua K. Tiller (MLA '02)

## Ecology Distinguished Teaching Assistant Award

Brian Todd (MS CESD student)

## UGA Mentor Award

Stephanie Madson (PhD ecology student)

## TRAVEL AWARDS

## Dean Lindholm Memorial Ecology Travel Award

Jessica Seares (MS CESD student)

## Nettleton SED Travel Scholarship

Jacob A. Lindsey (4th year BLA)  
Katherine A. Murray (2nd year MLA)

## Peachtree Garden Club Neel Reid Scholarship for Travel

James B. Whitley (4th year BLA)

OTHER STUDENT AWARDS & HONORS  
2002 Green Space Design Student Competition

**Marcie Diaz**, master's of landscape architecture candidate, and **Jeffrey Boring** and **Raysun Goergen**, master's of conservation ecology and sustainable development students, received top honors in early May for their "Regional Green Space Plan for the Upper Etowah Watershed" at the second national Green Space Design Competition held in Denver, Colorado. The plan, which provides a template for coordinating green space protection across the eight counties of the Upper Etowah watershed to optimize water quality and biodiversity benefits, tied for first place out of a field of 23 entries, and received a People's Choice award from conference attendees. The students will share a \$5,000 scholarship with the other winning team. Clif Henry and Brannon Hancock, candidates for the law school's J.D. degree, assisted in preparing the plan. The CED team held a celebratory ice cream social in June to thank those who "helped us keep our sanity during the last frantic no-sleep week prior to our trip departure."

**Cory Christopher** (MS ecology student) was recognized for presenting the outstanding paper by a graduate student in the biological sciences section of the Georgia Academy of Science's 2002 annual meeting, held in late March.

**Michael Dahlquist** (3rd year BLA) was awarded a student fellowship from the Robert Wood Johnson Foundation to attend The Congress of the New Urbanism's Tenth Congress in Miami Beach June 12th - 17th, 2002.

"This is big stuff in urban design," said **Bruce Ferguson**, director of the School of Environmental Design. The Tenth Congress for the New Urbanism will look at where urbanism has gone over the past ten years. The conference will examine transit-oriented development, improving suburban strips, and how to retrofit new downtowns into aging suburbs. Dahlquist was one of 12 chosen nationwide to receive scholarships for the conference.



**American Society of Landscape Architects Award of Honor**

Eleanor M. Buckholdt (BLA 02)  
 Quincy A. Hammond (BLA 02)  
 Jane A. Raikes (MLA 02)  
 Thomas M. Rainer (MLA 02)  
 Joseph W. Ward (BLA 01)

**American Society of Landscape Architects Award of Merit**

Gene B. Bussell (MLA 02)  
 Missy S. Means (BLA 02)  
 Jennifer Keller-Salyer (BLA 02)  
 Robert L. Sligh (BLA 02)  
 Joshua K. Tiller (MLA 02)

**Ecology Student Awards**

**Best Student Research Paper Award**

Mike Madritch (PhD ecology student) basic research  
 Mark Scott (PhD ecology student) applied research

**Environmental Policy Award**

Don Christy (MS CESD student)  
 Terry DeMeo (PhD ecology student)

**Robert Sheldon Award For Field Research**

Chris Anderson (PhD ecology student)

**Solitary Glove Service Award**

Paul Hirsch (MS CESD student)

**Stoddard-Burleigh-Sutton Award**

Sandra Cederbaum (Forest Resources student)

**Presidential Award (continuation)**

Dan Thornhill (PhD ecology student)  
 Laura Ediger (PhD ecology student)

**Dissertation Completion Award (final year university-wide)**

Heleen Bossuyt (PhD ecology student)  
 Erin Lindquist (PhD ecology student)  
 Stephanie Madson (PhD ecology)  
 Jessica Seares (MS CESD student)

**2002 SED Undergraduate Honors Day (5% scholastic):**

Meredith R. Carroll (2nd year BLA)  
 Jeremy D. Collis (4th year BLA)  
 Ryan James Fitzpatrick (transferred)  
 Rachel M. Holcomb-Gurley (4th year BLA)  
 Daniel C. Holz (4th year BLA)  
 Walter L. Kawa (4th year BLA)  
 Sara R. Leeper (4th year BLA)  
 Brittain L. Mylacraine (4th year BLA)  
 Kyle S. Phillips (4th year BLA)  
 Jason L. Steidel (4th year BLA)  
 James E. Varner (3rd year BLA)  
 Jessica L. Webb (3rd year BLA)  
 Courtney Willis (3rd year BLA)

**2002 Outstanding B.S. Ecology Undergraduates**

**Magna Cum Laude**

Wendy Grus (with honors)  
 Sandra Helms (with honors)  
 Heather Kovacs  
 Lisa Wilson

**Summa Cum Laude**

Geoffrey Gisler  
 Karinda Elliott  
**Cum Laude**  
 Heidi Gerstung  
 Kathleen Semon (with honors in geology)

**With Honors:**

Robert MacGregor

**Josh Laerm Memorial Outstanding Ecology Undergraduate Award**

Sandra Helms

**HONOR SOCIETY INDUCTIONS**

**Gamma Sigma Delta Scholastic Honor Society of Agriculture**

Outstanding Senior: Kyle S. Phillip (4th year BLA)  
 Outstanding Sophomore: Brittain L. Mylacraine (4th year BLA)

**Sigma Pi Kappa Initiates**

R. Kevin Chastine (MHP candidate)  
 Jennifer Ladenheim (MHP '02)  
 J. Robert Crawford (MHP candidate)  
 Sarah Lawton (MHP candidate)  
 Rachel Hildebrandt (MHP '02)  
 Jonathan E. Sager (MHP '02)  
 P. Jeanne Holder (MHP '02)  
 Meredith L. Temples (MHP candidate)  
 Dawn E. Johnson (MHP '02)  
 David L. Warren (MHP candidate)

**Erin Lindquist** (PhD ecology student) was inducted into two University of Georgia honor societies in spring 2002: Phi Beta Delta Honor Society for International Scholars and Blue Key International Honor Fraternity.

**HOK (Helmuth, Obata, Kassabaum) Urban Design Competition winners:**

Innovation	Presentation
Eric Baugher*	Stephanie Shelton*
Hui Fang Chang*	Lauren Colunga*
Kathryn Clarke*	Andrew Walter*

\*(3rd year MLA)

**FAMILY UPDATES**

Ecology doctoral student **Chris Jeffrey** and wife Jian proudly announced the arrival of their daughter Jolie Krysten Gabrielle Jeffrey on May 6, 2002, weighing in at 5 lbs., 12 ounces. Congratulations!

Lindsay and MLA student **Will Pickens** have a healthy 8-pound girl, Clara Grace, born on June 22nd at 9:22 pm. to join their daughter Lucy (4 year old). Congratulations!

Brendon Reiser Kane arrived on July 8, 2002 at 11:59 am, weighing in at 7lbs 14 ounces (21" long). Congratulations to Janet Kane and Chris.

Olivia Grace DeRosa was born on July 26, 2002, weighing in at 7 lbs., 15 oz. and pretty darn cute. She made it through the move better than any of us, said the proud parents **Dan deRosa** (MLA '02) and Anne deRosa. Congratulations!

The winners from the doctoral student presentations were **Heleen Bossuyt** and **Mitch Pavao Zuckerman**. Heleen spoke on "Aggregate-protected carbon in no-tillage and conventional tillage agroecosystems using 14C labeled plant residue." Her work is being conducted at the Horseshoe Bend Research area on the University of Georgia campus. Mitch's presentation was titled "Soil ecology along a gradient of urbanization in the Southern Appalachians." He has established twelve forest plots along a transect running from Asheville, North Carolina to the Pisgah National Forest near Brevard, North Carolina. This area is currently undergoing rapid growth and development, making it a prime area of the study of urban ecology.

The Ph.D. honorable mention awards were presented to **Gretchen Loeffler** and **Erin Lindquist**. Gretchen spoke on "Assessing the impact of arsenic on human health and its fate in aquatic foods webs" and Erin presented her work on "The effects of differential seed and seedling predation by crabs on tropical forest composition and structure". The scope of Gretchen's work is international with population studies from Bangladesh, Taiwan, South America and the western U.S. She is focusing on the implications of increasing concentrations of inorganic arsenic into the Chatahoochee River. Erin's research is being conducted in Costa Rica, where she is investigating the effects of seed and seedling predation by both land crabs and hermit crabs on the coastal forest community in relation to seed rain distribution and plant response to environmental conditions.

**Rebekah Chapman** and **Laura England** were the masters student winners for their presentations titled "Medicinal plant conservation and cultivation: A pilot study with *Aloysia triphylla*" and "Effects of riparian degradation on terrestrial dependence on aquatic food webs in headwater trout streams" respectively. Rebekah is conducting a pilot study in Argentina aimed at establishing baseline data concerning aromatic chemistry on a few economically significant species, demonstrating the utility of thin layer chromatography as an affordable alternative to analyzing chemotypic variation within populations, and developing cultivation strategies



**institute of ecology GRADUATE STUDENT SYMPOSIUM**

Front row L-R: Laura England, Mitch Pavao-Zuckerman, Tricia Rodriguez; second row: Rebekah Chapman, Sandy Helms, Gretchen Loeffler; third row: Heleen Bossuyt, Lindsay Stallcup. Photo by Janice Sand.

by Janice Sand

For the eighth year, Institute of Ecology graduate students organized a two-day symposium on student research and service projects. The Institute of Ecology Graduate Student Symposium was held in mid-January with 37 students participating. For the first time this year, undergraduate students shared their ideas by presenting posters of their research.

The annual symposium provides graduate students with the opportunity to practice and improve speaking skills and reward excellence in research and service. It also helps to integrate faculty and graduate students in an academic context and exhibit the Institute's graduate program to the campus and to potential graduate students.

Presentations featured research and service projects conducted locally, nationally and internationally by doctoral and masters degree students in all stages of graduate training. Topics included a variety of issues from the impact of urbanization on Georgia's marshes to invasive species, water quality, biodiversity, and regional land use trends. Ecology Ph.D. student **Stuart Borrett** served as chairperson for this year's event. Each presentation is judged by faculty, staff and students from a variety of disciplines.

Undergraduate posters were exhibited on the final day of the symposium with five students participating: **Susan Dunn, Sandra Helms, Alison Pruett, Cathy Ricketts,** and **Tricia Rodriguez**. Judging for the posters was organized by the ecology graduate students, again providing them with experience in critiquing.

Ecology Professor Emeritus **Dr. Larry Pomeroy**, a strong supporter of the symposium since its inception, again took on the responsibility of tallying all the judges scores to decide the winners for best presentation. This year four graduate students were selected, each receiving \$200 for research or travel expenses.

The awards committee also recommended four new awards this year for honorable mention. "Every year we have the problem of a statistically similar cluster of grades at the top," Pomeroy said. "(Our) committee suggests going strictly by the numbers for the awards but officially recognizing the remaining top people with Honorable Mention."

the golden mean

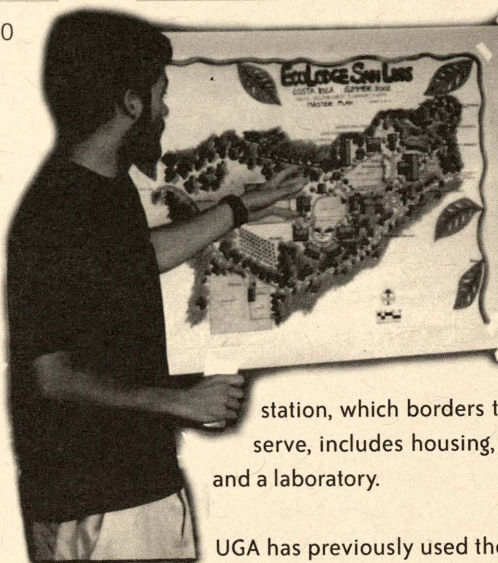


# UGA PURCHASES COSTA RICAN "Campus in the Clouds" Set To Grow RESEARCH STATION

photos courtesy: Allen Stovall

by Laurie Anderson

page 30



University of Georgia students who want to learn about Central America first-hand now have a campus of their own. In early May, UGA purchased Ecolodge San Luis and Research Station, a 163-acre (70 hectare) property in the San Luis Valley about three hours northwest of San José, the capital of Costa Rica. The

station, which borders the Monteverde cloud forest preserve, includes housing, a dining hall, offices, classrooms and a laboratory.

UGA has previously used the facility for programs sponsored by the Institute of Ecology and the School of Environmental Design (SED) in the College of Environment and Design, and the College of Agricultural and Environmental Sciences. It is now in its eighth year of operation. Faculty members Milton and **Diana Lieberman**, **Allen Stovall** and **Gregg Coyle**, among others, teach classes and supervise research at the site (see Curriculum, page 9).

"We are thrilled with the acquisition," commented Milton Lieberman, marine sciences, calling it "a triumph for education, research, and conservation in the tropics."

The Costa Rican forest is of great interest to researchers because of its high altitude, giving it an ecosystem seldom seen in the rest of the tropics. Local involvement also makes it a valuable learning tool.

"What sets Ecolodge San Luis apart from other biological stations is that it doesn't separate itself from the surrounding local community," says ecology Ph.D. student **Erin Lindquist**, who has taught at the site. "At the Ecolodge, I was in daily contact with the Tico (native Costa Rican) campesino people, improving my Spanish skills and better understanding the community's interactions with their natural environment, each other, and the foreign visitors that flock to the area because of its biological wealth."

"It's unique [by virtue of] being isolated from tourist activity," adds Gregg Coyle. "It's also a great example of a pre-montaine

forest that was only lightly timbered."

"San Luis is an exceptional setting," agrees ecology faculty member Diana Lieberman, "for undergraduate and graduate coursework and research in a wide range of disciplines, as well as immersion in language and culture, volunteer activities, and internships....the door is open for the participation of far greater numbers of Georgia students in programs here."

Mark Lusk, associate provost for international affairs, also anticipates a wider range of classes. "The exciting thing about this is that it not only builds on the work done by the



Institute of Ecology and the School of Environmental Design, but it opens up the site to majors of all fields of study at UGA." The university's master plan calls for increasing the rate of students studying abroad by 25 percent by 2010.

The College hopes to be among the first to expand its presence at the station. "We're all going to be pushing to get semester programs going down there to fully utilize the incredible potential of this international site," says **Jim Richardson**, ecology's undergraduate coordinator. So far, the college has only conducted Maymester and summer classes at the site.

"Many of our Maymester alumni comment that they learn more in our one-month course than they do in an entire year of classes on the UGA campus," says Lindquist. "Just

continued from page 30

imagine how much undergraduate students could learn in an entire semester abroad in Costa Rica using the Ecolodge as their home base!"

"It can be a base for doing research and service projects all over Costa Rica," Allen Stovall believes. "I'd love to see a well-run ten week semester program there, teaching design, construction, Spanish and ecology." Stovall also sees outreach opportunities involving communities in the region that need planning assistance. "[There is] great pressure by tourist development [down there] and the speed of what's happening needs to be guided and maybe in some way we can help influence that...help lend a hand and help guide the direction of change."

The purchase also promises better infrastructure at the site.

"What we did last summer was document what was there and develop some master plan concepts," said Stovall. Most of the basic installations - property lines, transportation routes, buildings -- have already been inventoried, reports Coyle. "For people to be able to spend ten weeks or more [at the site] there needs to be better infrastructure," says Stovall, "and we're a long way off from that....We need to plan carefully and be patient."

Part of the patience involves consideration of Costa Rican needs. UGA planners are already sensitive to traditional structures and don't intend to impose large North American elements on the landscape. "We're trying to stay with the local San Luis Valley vernacular and with the culture and historical imagery of that valley," says Coyle of their design concepts.

The Costa Rica property was purchased by the University of Georgia Foundation, which will lease it back to the university, with costs being covered by program fees paid by students studying there.



More information on programs at Ecolodge San Luis can be found at <http://www.ecolodgesanluis.com>, and at <http://www.uga.edu/oie/sacostarica.htm>.

Sources: the Associated Press, Athens Banner-Herald, UGA News Service, Savannah Morning News, Erin Lindquist, Drs. Milton and Diana Lieberman, Gregg Coyle, Mark Lusk, Jim Richardson and Allen Stovall.

continued from page 29

## institute of ecology GRADUATE STUDENT SYMPOSIUM

that optimize the yield per acre of essential soils. Laura presented preliminary work she has conducted at seven headwater trout streams.

Masters honorable mentions went to **Kimberly Andrews** and **Lindsay Stallcup**. Kimberly gave a passionate presentation on "Balancing the agendas of politics, sustainable harvest, and quality of research data on the behavior of the nesting hawksbill sea turtle." She has been measuring the seasonal fecundity (frequency of nests) at a research site in Antigua, West Indies. This data has become essential in the Caribbean conservation debate over a sustainable harvest of nesting hawksbills. Currently the species is listed as critically endangered. Lindsay spoke on the "Effects of localized nitrogen enrichment on leaf decomposition rates in phosphorus-rich tropical soils". She is conducting this research at the La Selva Biological Reserve in Costa Rica.

Two undergraduate students were rewarded for their poster presentations and each received \$100 for research and travel expenses. **Sandra Helms'** poster was titled "Building population models from empirical data: Does plant quality matter to the dynamics of insect herbivore populations?" Sandra is working with **Dr. Mark Hunter** on the best method for modeling insect population data collected from different plants. She has been accepted into the graduate program for fall 2002. **Tricia Rodriguez** was recognized for her poster titled "The effects of chytridiomycosis on feeding efficiency of *Rana pipiens* tadpoles." Chytridiomycosis is a fungal disease causing mass mortality and population declines in amphibians on a global scale. This disease is fatal to post-metamorphic frogs, although it does not cause mortality in tadpoles.

The symposium concluded with a plenary address from Institute of Ecology alumnus **Dr. Jack Webster**, Ph.D. (ecology) '75. Webster, a professor of ecology at Virginia Polytechnic Institute and State University in Blacksburg, spoke on "Biomes of North America from the perspective of a nitrogen atom caught in the nutrient spiral."

page 31





# CED ANNUAL FUND

YES, I support the CED. Enclosed is my gift of:

\$1000     \$500     \$250     \$100     other

Please make checks payable to the  
UNIVERSITY OF GEORGIA FOUNDATION

Please earmark my gift as follows  
refer to Current CED Endowments/Funds:

[Redacted area for earmarking gift]



\_\_\_\_\_ Name

\_\_\_\_\_ Address

\_\_\_\_\_ Telephone

Please **fax** to 706. 542 4485 or **Return to:**  
Anne Moser  
College of Environment & Design  
The University of Georgia  
609 Caldwell Hall  
Athens, GA 30602-1845

## Current Endowments/Funds

- SEDAA Graduate Scholarship Fund
- Environmental Design Scholarship
- HB Owens Scholarship
- Clay Adamson Scholarship
- ERDAS Scholarship for Studies in GIS
- Robert J. Hill Scholarship
- Daniel B. Franklin Scholarship
- W.L.M. Knox Scholarship
- John W. Linley Scholarship
- Brooks Wigginton Scholarship
- Edah Brittan Grover Scholarship
- John Walter Eubanks Merit Scholarship
- Randolph & Helen Marshall Scholarship
- Neel Reid Endowment
- Howell S. Stone Mem. Internship Fund
- Jon Seymour Program Support Fund
- Charles A. Smithgall Support Fund
- Env. Design Program Enrichment Endow.
- John Long Resource Center Support Fund
- Nettleton Travel Support Fund
- Gorman Travel Support Fund
- Richard Davis/HGOR Plan. Fund
- Institute of Ecology Endowment Fund
- Odum Professorship in Ecology Fund
- Odum Spring Hollow Watershed Maintenance Fund
- Wheatly-Institute of Ecology 2

## Operating Funds

- SEDAA Fund
- SED Program Enrichment Fund
- Institute of Ecology Fund



The Golden Mean  
College of Environment & Design  
The University of Georgia  
Athens, GA 30602-1845

Non-Profit  
Organization  
U.S. Postage  
PAID  
Permit #165  
Athens, GA

