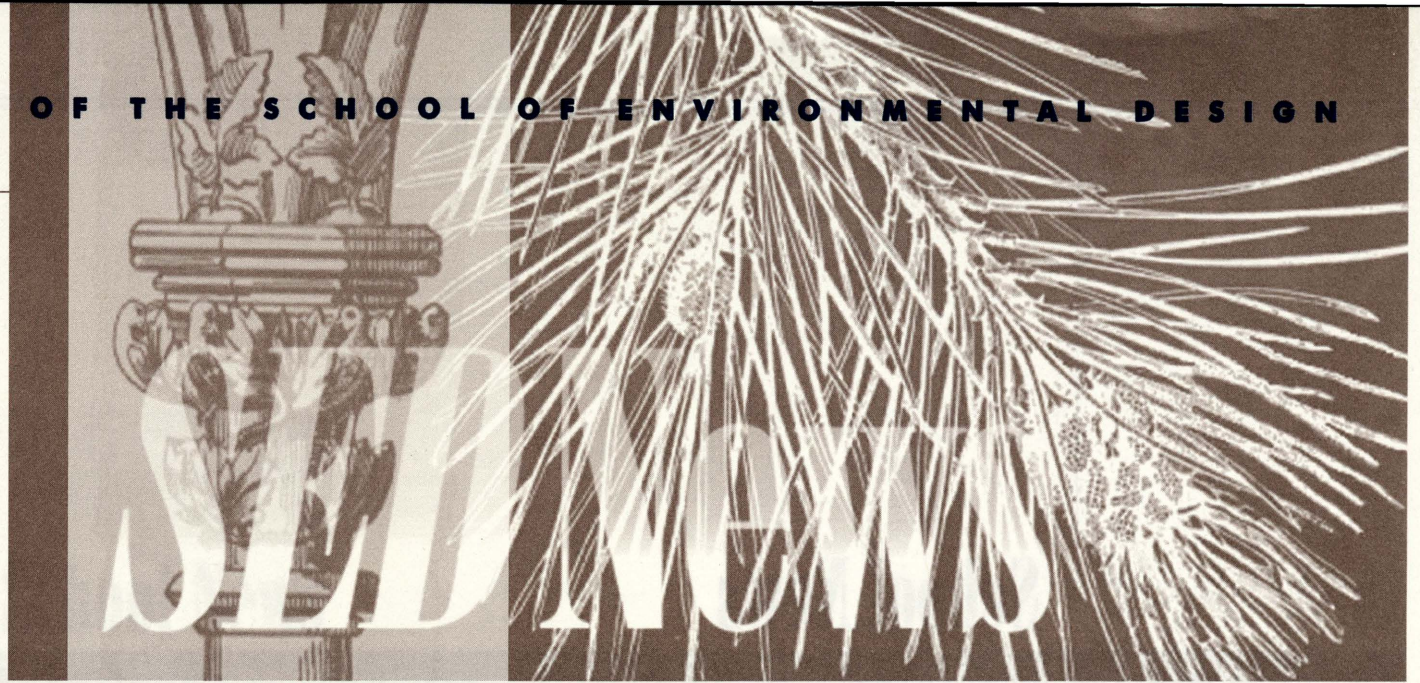


THE  
UNIVERSITY  
OF GEORGIA  
Fall 1996



## SED News

School News	2
Faculty News	6
Alumni News	8
Student News	12
Research News	14
Service News	19
Development News	21
SED Calendar	24

### SEDAA STEERING COMMITTEE '95-'96



Bill Kelly  
(MHP '93)



Brad Good  
(BLA '78)



Tommy Holcombe  
(BLA '72)



Rich Mandell  
(BLA '90)



Clay Mooney  
(BLA '79)



Rick Pariani  
(BLA '77)



Sandy Phillips  
(BLA '88)



Tim Thoms  
(BLA '72)



Lisa Vogel  
(MHP '93)

Not Pictured:  
Roy Ashley (BLA '64)  
Laura Byington (BLA '82)  
Hoyt Fincher (BLA '71)  
Tom Kolias (BLA '78)

## The Coming Millennium

BRAD GOOD

Amazing . . . in just four short years, the click of time will move us into the year 2000 and a new millennium. As a landscape architectural student in the 1970's, I viewed the year 2000 as a future to be fulfilled. How quickly the future becomes the present: that once distant year now stands as our immediate future filled with challenges and opportunities.

It is difficult to look into the crystal ball and predict possibilities. Nostradamus, the 16th-century French physician and astrologer famous for his prophecies, predicted a millennium of fire, pestilence and disasters. But certainly, the majority of us view its arrival with a more positive outlook, and it is with that positive outlook that we the alumni, students, faculty and administration of the School of Environmental Design must carry the SED into the new millennium.

With one of the oldest landscape architecture programs and one of the first historic preservation programs in the country, the SED can make valuable contributions through education, research and professional development. While we may not have a crystal ball or the insight of Nostradamus, we must prepare ourselves and the SED to ensure the fulfillment of those contributions.

Currently, we are in the midst of a search for a new

dean to succeed Kerry Dawson. The selection of a new Dean is a key preparatory step for the SED, as the selected person will lead it into the future. Dean Dawson made excellent contributions to the administrative aspects of the school, by increasing communication with the alumni, expanding the number of faculty and staff, fostering visibility and securing funding. He has left an outstanding base from which to continue to build. However, the new dean must have the full support of the alumni, faculty, staff and students, to allow that individual to continue a positive direction for the SED.

The current faculty and staff at the SED represent one of the strongest and most diverse groups assembled. With a blend of old and new, the faculty can make an incredible impact on the SED and its future. They must continually prepare themselves for their roles as teachers, researchers, academics and representatives of the SED and promote its educational mission.

Determinations as to future technologies, communication tools and advances in the profession can spring from the faculty. Finally, it is with the faculty that the education and preparation of future professionals begins, and that effort must always be 100 percent.

The alumni of the SED are a diverse group operating in multiple areas of landscape architecture, historic preservation, planning, and related fields. Many of our alumni are recognized on a national level, whether through design contributions to the profession or academic achievements. The alumni are also frequently the recipients of the graduates from the SED and are thus responsible for the continued education of these young professionals. We the alumni must also prepare ourselves to give support to the SED to ensure its success in the coming millennium. Support through time, monetary donations, and for the students and graduates are positive contributions. Find the time to serve on the Alumni Steering Committee, make the time to attend alumni functions, offer insight as to the future educational needs of your degree program (BLA, MLA, or MHP) and monetarily support one of the funds of the SED. Whether a recent graduate or long-time alumnus or alumna, your involvement is needed to expand the resources available to the SED.

This year, the SED has undergone three significant reviews. Two of these were the professional accreditation reviews of the undergraduate and graduate programs in Landscape Architecture. These occur once every five years

through the American Society of Landscape Architects. The accreditation reviews focused primarily on the structure of the programs and their ability to maintain satisfactory professional training.

The SED also experienced its University Program Review, which occurs once every ten years and focuses on opportunities to improve the quality of instructional, research and public service programs within the SED.

Each of these reviews is important in determining the strengths and weaknesses of the SED and assuring that the faculty and administration exercise their responsibility to maintain the high quality of the SED and the University.

We are confident that the years ahead are full of opportunities for the SED and UGA. The current growth of the SED and its related professions are strong indicators of the potential for landscape architecture and historic preservation. If we as individuals, faculty, students and alumni prepare for the future and willingly work together, we can meet those opportunities and continue to forge a great School of Environmental Design and a great University.

## Environmental Design Readies for Future Growth

PHIL WILLIAMS

Reprinted with permission from the University of Georgia's *Columns*.

Environmental what? Kerry Dawson has heard it all before. People sometimes respond to the term "environmental design" with a blank stare. It sounds familiar, but what, exactly, is it?

"This is a very broad profession, but that's one of its

advantages," says Dawson. "It runs from urban design and wilderness planning to botany and the assessment of historic properties. Our graduates have done everything from working on set design for movies like *Waterworld* to assisting with remote sensing in the Gulf War."

Some people might not know what the field encom-

passes, but students do. For the past four years, Environmental Design has been one of the hottest majors on campus, and the school now has some 380 undergraduate majors and 120 graduate students. With 30 faculty members and a budget of more than \$2 million, Environmental Design is learning the complexities of success.

### RETURN TO TEACHING, RESEARCH

Dawson, dean since 1992, will return to teaching and research this fall, but during his years at UGA, the school's growth has mirrored the increasing need for professionals in the field. Although the enrollment numbers have been picking

CONTINUED ON PAGE 2

## School News

ENVIRONMENTAL DESIGN  
READIES FOR FUTURE GROWTH  
CONTINUED FROM PAGE 1

up steam lately, the school saw similar surges at various times in the past, under previous deans Hubert Owens, Robert Nicholls and Darrel Morrison. "The school has



Kerry Dawson will return to teaching and research following a decade of administration at UGA and UC Davis.

### THE SCHOOL OF ENVIRONMENTAL DESIGN

- Annual budget: More than \$2 million
- Enrollment: 380 undergraduate students and 120 graduate students
- Faculty members: 30
- Staff: 8

prospered through those times because of a dedicated group of administrators, faculty, staff and students who have created a talented group of alumni," says Dawson.

What the school really teaches, says Dawson, is environmental decision-making. Graduates often must deal with issues like real estate, land development, parks and preservation planning at the same time, so the trend in the '90s is for a versatile training.

### CHALLENGES FOR THE NEW DEAN

The increase in students from 280 undergraduates three years ago has brought growth in other areas. The school has greatly expanded finances and technology and has upped its faculty by one third. Naturally, such success in attracting students and faculty has created what Dawson calls "severe facilities problems," and that will be only one of the challenges for the new dean.

"Like all three dean searches underway on the campus, we're probably hoping for the impossible in a new person who can garner resources in a time of government downsizing, can manage our existing plant in a way that greatly expands productivity, while at the same time is a great 'people person' with an illustrious academic career," says Dawson. "It's a tough job, but it's a great university."

Luckily, the facilities problems will be lessened with the remodeling of Denmark Hall and the reprogramming of the Founders

House in the Founders Memorial Garden on North Campus. (The Garden Club of Georgia headquarters in the Founders House will move to the State Botanical Garden of Georgia soon.) The faculty of the

School of Environmental Design has been recognized nationally for many years as leaders in historic preservation and all areas of landscape architecture. A 1994 survey by the University of Wisconsin found the school's faculty to be among the country's most productive researchers.

### MAJOR CURRICULUM REVISION

Lately, the faculty has also been working toward a major curriculum revision spurred in part by the pending conversion to semesters of all units of the University System of Georgia.

"Our faculty really got a head start on this because we began a series of retreats in January 1994 to talk about curriculum," says Dawson.

"In our last two accreditation visits for graduate and undergraduate programs, the reviewers called for a curriculum review," Dawson adds. "So we were just that much farther ahead when it came to focusing on changes for the semester system. Unfortunately, the conversion is so complicated we'll be pushing the deadlines like everyone else. One of the problems for us is to use the conversion to economize on classes. Our studios and large lectures are labor-intensive for faculty and students."

### DEEP ROOTS AT UGA

While the school has been an officially recognized entity only since 1969, its roots run deep at UGA. At various times, landscape architecture has been an undergraduate degree pro-

gram in such differing areas as agriculture and art. Even now, more than a quarter-century after the founding of the school and almost 80 years since the first landscape architecture faculty members arrived, interdisciplinary programs on campus remain important. For instance, the school jointly supports a preservation law degree and teaches a course with the real estate department in the Terry College of Business,

houses certificate programs and has extensive exchange and studies abroad programs.

Dawson is proud of the school's accomplishments, but he also believes the school is poised for greater advances.

"The school is poised for a bright 21st century, says Dawson, "and there is a good group of people to take it there."

## SED On-Line:

TOM REYNOLDS

### Multi-media Suite

Professor Bill Ramsey, Professor Leo Alvarez, Project Coordinator Tam Fields, Outreach Director Cheryl Mihalko and the SED Computer Services staff would like to announce that the new multi-media production suite is now available for use. The facility, located in Room 402 of Caldwell Hall, has video editing and animation capabilities. In addition to two super VHS editing decks and monitors, the suite contains a Macintosh Power PC computer for computer-controlled analog editing.

This new equipment will allow students and faculty to create professional quality videos and multi-media presentations. In addition, Dean Dawson's efforts will soon bring a new Silicon Graphics computer to the suite to allow for the creation of dynamic World Wide Web pages.

The SED Multi-Media Production Suite is available to faculty and to students working on faculty projects. Access to the suite is by reservation only. For more information contact Tom Reynolds or Chris Shaw in the SED Computer Center at 706-542-4463.

### Georgia Historic Preservation Online Project

The Georgia Historic Preservation Online Project is up and running on the SED's World Wide Web server. The site is an experimental effort to provide a central web site for historic preservation information in Georgia. It was created by Tom Reynolds, a student in the MHP program, and Chris Shaw, SED Computer Services Specialist. This test project includes the state Historic Preservation Division, the Athens-Clarke Heritage Foundation, the Athens-Clarke County Historic Preservation Commission and the DeKalb County and Decatur Preservation Commissions.

We hope the site will facilitate communication among preservation professionals and raise awareness of preservation issues and concerns among the general public. In the future, the site will be expanded to include more participating organizations, an on-line discussion board, a legislative issues forum, and interactive heritage tours.

If you would like further information or would like to contribute to the site, contact Tom Reynolds in the SED Computer Center at 706-542-4463 or by e-mail at treynolds@uga.cc.uga.edu. You can access the site at <http://www.sed.uga.edu/>.

## School News

# Steps Toward a Semester System

LEONARDO ALVAREZ

The ongoing semester conversion process provides us a rare opportunity to closely examine and reinvent our curriculum. We have a chance to look clearly and thoughtfully at the requirements needed to earn a BLA, MLA or MHP at the University of Georgia.

### SEMESTER CONVERSION ISSUES

What ideas are guiding the redesign of our curriculum?

What will distinguish our curriculum?

How do we effectively integrate emerging technologies into course work?

Should the BLA and MLA curriculum have a single studio sequence as the main spine of the degree requirements?

How can we more effectively teach an increasing number of students?

How do we build flexibility into the curriculum while maintaining standards in an ever increasing number of expected areas of expertise?

How can we best respond to the need for interdisciplinary and collaborative efforts required to address complex environmental design problems?

How do we best prepare our graduates to be effective professionals in private, public, and academic practice?

Should we broaden the degree offerings at the SED?

The Semester Conversion Committee—comprising Leo Alvarez (Chair), Pratt Cassity, Ian Firth, Bill Mann, Forster Ndubisi, and alumnus Rick Pariani—was formed to help guide and coordinate the efforts of the three curriculum committees (BLA, MHP, MLA) as we move towards the University System-mandated conversion from quarters to a semesters.

The committee felt that for the process to be most successful it must provide ample opportunity for input. Towards that end, multiple venues for input were proposed. In addition to the two curriculum retreats and two workshops held over the last several years and the five faculty meetings dedicated to semester conversion, we have proposed that selected curriculum and semester conversion committee meetings be open meetings to encourage faculty participation. We have also proposed a series of workshops to provide a forum for student, faculty, and alumni input. Three of these sessions focusing on the MLA program were held in Winter Quarter '96. Three more sessions focusing on the BLA were scheduled in Spring Quarter '96, and all three faculty meetings during this quarter were dedicated to the semester conversion process.

Although our input began in Winter Quarter '94 with the first of two curriculum retreats, and the University conversion will not be complete until Fall Semester '98, the timeline below has been compressed to show only the quarters of our greatest involvement.

#### WINTER QUARTER 1996

- Complete educational objectives.
- Begin to discuss degree requirements and course conversion.
- Faculty Meeting dedicated to Semester Conversion (January 12).

#### SPRING QUARTER 1996

- School approves all core course requirements for degrees.
- School finishes designing the curriculum.
- Faculty Meetings dedicated to Semester Conversion: April 19, May 17, June 14.
- Three workshops dedicated to BLA program.

#### SUMMER QUARTER 1996

- School completes approval of degree requirements.
- School decides semester course offerings, including specific degree requirements, course conversions, and course descriptions.

#### FALL QUARTER 1996

- School begins submitting information to the Office of Curriculum Management.
- School completes approval process of degree requirements and applications for new courses and course changes by December 2, 1996.

#### WINTER QUARTER 1997

- Semester degree requirements and course proposals reviewed by the University Curriculum Committee.

After Fall 1996, the work—other than review of catalog printing—is essentially in the hands of the various university committees. Let's take full advantage of this opportunity to strengthen—not just revise—our curriculum and ensure that the School of Environmental Design remains a leader in the education of landscape architects and historic preservationists.

## In the Garden

DOUG PETERSON

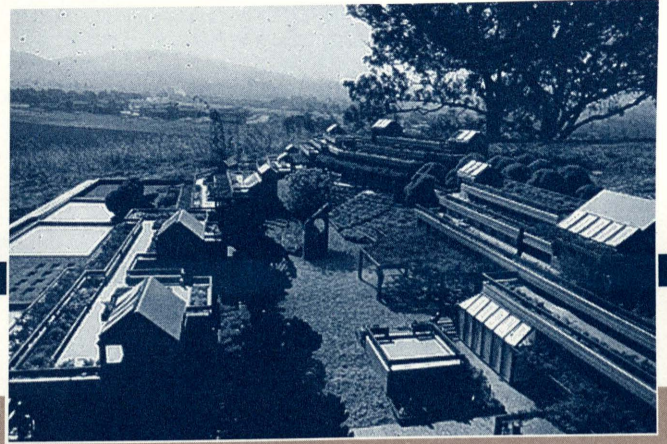
Much of the enjoyment of a garden comes from the anticipation of what changing seasons will bring. On a cold dark morning this winter, an unexpected fragrant whiff of Wintersweet in the courtyard stirred thoughts of what to anticipate in this new year. Already past, late fall was complete with vibrant colored foliage on the trees and plentiful blooms on the Sasanqua Camellias and Witch Hazel.

On the warm days of fall the garden attracted a steady stream of people seeking a few minutes refuge with nature. Looking forward to spring and summer is always a combination of anticipating the renewal of existing plants while planning for new and different additions. Spring in the garden was colorful and lush, as always.

Garden activities are much the same: traditional events like Alumni Weekend and Graduation were once again enjoyed in a green setting, and plans and preparations are being finalized for the expected large number of visitors at the '96 Summer Olympics.

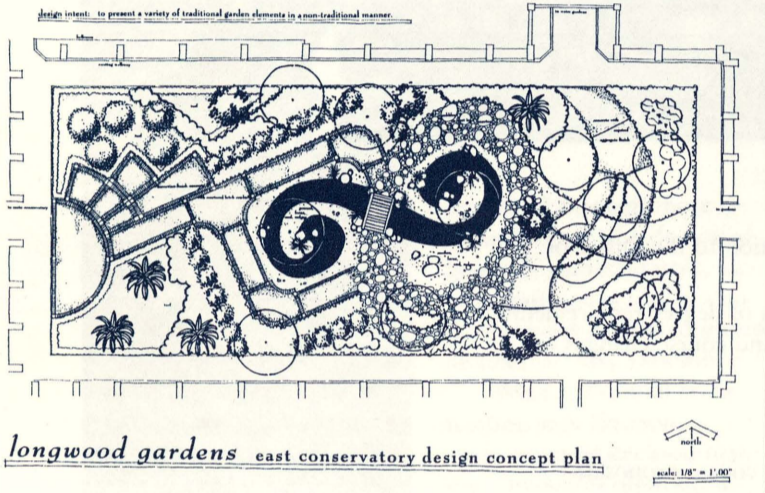
For the present, we can relax and enjoy the vibrance of the garden in late spring.

John Tillman Lyle's photographs accompanied his lecture.



# Lectures & Exhibits

LISA VOGEL AND  
RENÉ SHOEMAKER



longwood gardens east conservatory design concept plan

A design by Brad Davis (BLA '95) was part of "So it is SED . . ."

## So It Is SED . . .

SED Students

June 1 — July 28, 1995

Organized by MLA student Tres Fromme and exhibited during graduation and through most of the summer, this show was billed as the First Annual Juried Student Exhibition. Out of more than 100 submissions of student work, approximately 50 pieces were selected by a jury of SED faculty members.

## Urban Landscapes

Walter Hood

November 3, 1995

Mr. Hood, Associate Professor of Landscape Architecture at the

University of California, Berkeley, discussed the special needs of urban areas and how to answer the concerns of the urban environment.

## Urban Diaries

Walter Hood

November 3 — December 15, 1995

In this show accompanying his lecture, Mr. Hood exhibited photo montages, sculptures, and other multi-media pieces assembled from images and materials taken from his hometown.

## The Community-Transportation Connection

Gary Okerlund

November 29, 1995

Mr. Okerlund, principal of Okerlund Associates and the Community Design Group, is a planner and urban designer. He spoke about transportation issues and planning as they affect community design and revitalization.

## S.A.L.A.D.

Tres Fromme and Mike Landers

January 30 — February 9, 1996

This show exhibited posters of the Secret Association of Landscape Architects Deconstructing (S.A.L.A.D.), who, in their own words, "seek to actively and playfully subvert today for a better tomorrow." The exhibit featured a number of S.A.L.A.D. posters challenging the status quo of landscape architecture practice and scholarship.

Sarnath: The Place Where the University of Illinois Preached its Last Sermon  
Prospering in a Changing World Through Knowledge and Leadership

Student Voices in the ASLA

Vincent Bellafiore

February 22 — 23, 1995

Professor Bellafiore lectured to the campus at large about Sarnath, spoke to the Northeast Georgia Section of the Georgia Chapter ASLA, and held an informal discussion with SED students about their role in the ASLA. Professor Bellafiore is head of the Department of Landscape Architecture at the University of Illinois, President of the ASLA, and an alumnus (BLA '66) and former faculty member of the SED.

## Old Maps, New Stories

Louis DeVorse

February 29, 1996

Dr. DeVorse, Professor Emeritus of Geography at the University of Georgia, is a leading authority on historical maps and their interpretation. He spoke on General James Oglethorpe's use of maps in promoting the Georgia colony.

## John T. Lyle: Recent Works

John Tillman Lyle

February 27 — March 19, 1996

John Tillman Lyle, professor of landscape architecture at the California State Polytechnic University in Pomona and Director of the Institute for Regenerative Studies, exhibited this show featuring residential and campus designs that focus on sustainability, both technically and metaphorically. The exhibit accompanied a lecture and charette conducted by Professor Lyle.

## The Ecology of Infrastructure

John Tillman Lyle

March 8, 1996

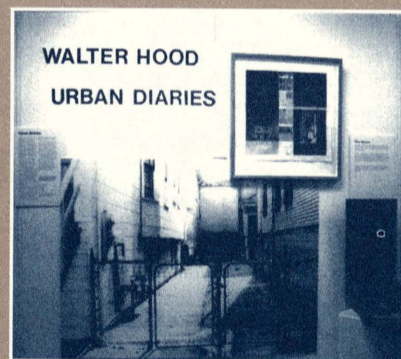
In this campus-wide lecture, Professor Lyle explored his viewpoint that the challenge of living more sustainably is essentially a design problem requiring that we create landscapes that serve as infrastructure vs. landscapes that require inputs from infrastructure. Lyle also led a charette organized by BLA student Brian Ellison, Professor Lucia Athens, and the Graduate Student Organization. For more information on the charette, see "Graduate Student Organization" on page 12.

## So It Is SED . . . '96

SED Students

April 5 — April 20, 1996

This, the second annual juried student exhibit, was organized by MHP student Nicole Diehlmann. The student works were once again impressive and ranged from plans and drawings to sketches, measured drawings, and photographs. The exhibit was a featured component of Alumni Weekend '96.



Walter Hood's multi-media montages are taken from his urban surroundings.

Sports Facilities: Magnets for Urban Enhancement  
by Stu Dawson  
April 19, 1996

Stu Dawson, a principal of Sasaki Associates, was the SED Spring Lecturer as well as the featured speaker of Alumni Weekend. He spoke about the many large-scale sporting facilities that Sasaki Associates has designed and discussed their impact on and relation to urban spaces.

## Defiant Gardens

Kenny Helphand

April 29, 1996

Professor Helphand who teaches landscape architecture at the University of Oregon, spoke about gardens as landscapes of resistance and metaphorical use of gardens.

## Crossing the American Grain

Grady Clay

May 16, 1996

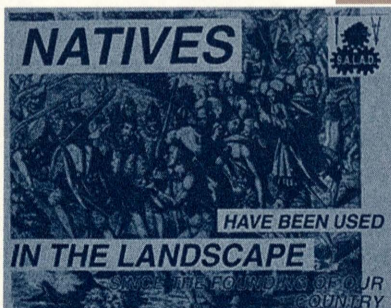
Clay, the former editor of Landscape Architecture magazine and a noted commentator on American cities, delivered this lecture in celebration of National Historic Preservation Week. Adapted from his weekly public radio program and his newest book, *Real Places*, his talk gave a unique perspective on the American landscape.

## Environmental Design for the 1996 Atlanta Olympics

by SED Alumni, curated by Rene Shoemaker

May 17 — September 30, 1996

The work of SED alumni who have designed athletic venues and public spaces for the Olympics is featured in this show, which opened with a reception on May 17. Plans, drawings, models, and other pieces illustrating the design work of these alumni make up the exhibit, which runs throughout the summer.



S.A.L.A.D.'s posters challenge the status quo.

## School News

### SED International

#### CORTONA '95

One can hardly imagine a better place to study Landscape Architecture and urban design than a venerable Italian hill-town perched precariously on the slopes of Mt. St. Egidio. The University of Georgia's Studies Abroad Program has been going strong for 26 years in the Tuscan community of Cortona, about an hour and a half from Florence.

Students live and work among the native population, from whom they learn some of the cultural traditions such as the *paseggiata*, the customary evening stroll after dining and the weekend outdoor markets, which temporarily transform the city's streets and piazzas into a festive bazaar. Perhaps some of the most important lessons in Cortona come from observing the incorporation of a rich cultural past into everyday life and the zestful use of urban space by people of all ages, at all times of the day and night.

The Landscape Architecture studio was housed in a small deconsecrated church located near the edge of Cortona's walls. Students from the University of Pennsylvania and Drexel University, interior design students from UGA, and a lecture and studio visit by Mathew Longo, a well-known Boston architect, enriched the studio experience. Among the many field trip destinations of the Landscape Architecture group were Rome, Pompeii, Villa D'Este, Villa Bomarzo, Isola Bella, Villa Lante, Il Trebbio (a Medici hunting lodge), and Villa Celle (home of an extensive modern outdoor sculpture collection). The examples seen on these travels became the fertile inspirational ground for successive projects including typology of piazzas, urban piazza design, fountain design, and a fantasy project which culminated in the annual show of creative work of the UGA group at the Palazzo Vagnotti.

Kudos and bravissimo to the Cortona Landscape Architecture class of 1995: Chris Alonso, Aimee Boyer (Drexel), Lundy Clark (U. Penn.), Lucy Crisp, Alyssa Cunningham, Andrew Evans, Andrea Gregor, Kenneth Haines, Courtney Kennedy (UGA Interior Design), Yuki Misawa, and David Spooner.

LUCIA ATHENS

### REMODELING

#### DENMARK HALL

Roberts and Collins Architects of Atlanta were hired in late April to begin the design phase for the remodeling of Denmark Hall. Working drawings should be completed by late 1996 with construction finished before the end of the decade. Roberts and Collins also remodeled UGA's historic Terrell Hall, and their emphasis on craftsmanship, material science, and adaptive design produced a functional yet beautiful solution. The design team for the remodeling even has a special SED connection: Breedlove Land Planning, headed by SED alumna Mike Breedlove (BLA '80), has been hired by Roberts and Collins to do the site design for the remodel. SED alumni Sandy Phillips (BLA '88), Tad Braswell (BLA '90), Scott Talbot (BLA '93), John Pickens (BLA '93), and Greg Whitfield (BLA '96) also work with Breedlove.

Denmark Hall has 15,450 square feet of existing space. Denmark began its existence as the campus cafeteria in the early part of this century. Shortly after World War II, it was reassigned as studio space for the landscape architecture program. Several small renovations have occurred in Denmark but basically, the building is in need of major work. It has outmoded heating and cooling, inefficient space, asbestos, and no handicapped access to the second floor. Some of the unique

#### MY YEAR AT UGA

The editors of SED News asked me to write a little bit about myself and explain my stay at UGA. I arrived in September 1995 with the goal to study for a year at UGA and to experience the American education system. My home country is Germany, and my school is located in Rostock, a small port town on the Baltic Sea. I study at the University of Rostock, the oldest northern European university. With some 8,000 students it is rather small compared to Georgia. My background is environmental science, land improvement and environmental protection. My program is *Landeskultur und Umweltschutz*, and it is part of the Department of Agriculture.

After getting my Bachelor's degree, I kept on studying and a year later I got an offer to go to the US for a year. Since I always missed the design part of the field I'm studying, I decided to apply for the graduate program in landscape architecture and spend a wonderful time in Athens.

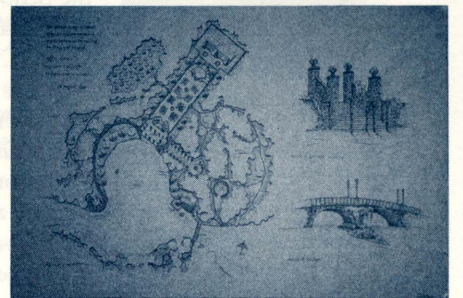
My stay at the SED was connected with an assistantship from the Graduate School, and I worked mainly with René Shoemaker on the preparation of the Olympics Exhibit, which should be up by now. Besides this, I took the basic design classes, some computer design and finished the winter quarter with the urban design studio taught by professors Stephanie Gibbs, Claudia Levy, and Leo Alvarez. The things and skills I learned will definitely help me in future life and are already increasing my job opportunities. I will graduate this summer and hopefully work in a field which connects environmental protection and landscape architecture.

Last but not least, I want to use this chance to thank everybody who helped me in Athens: a special thanks to my roommates, Jeff and Ken, my whole class, and René Shoemaker, who became not only my boss but also a very good friend. If anybody wants to know more about my school, pull up its homepage under <http://www.uni-rostock.de/>.

TOM RETTSCHLAG



LUCIA ATHENS



Above, top: The 1995 landscape architecture class at Cortona.

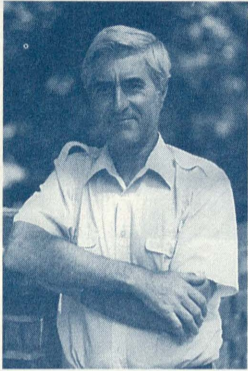
Above: Final project, Urban Design Studio, Cortona: "Fantasy Villa." Work by David Spooner.



RENÉ SHOEMAKER

Tom Rettschlag

## Faculty News



Robert Nicholls

### Robert Nicholls Retires

After 39 years of service, Professor Robert Nicholls retired on April 1, 1996 from the School of Environmental Design at the University of Georgia. Professor Nicholls began as an Assistant Professor at UGA in 1957, was promoted to Associate Professor in 1964, and became a Professor in 1968. Professor Nicholls was Dean of the School of Environmental Design from 1973 to 1983.

Bob Nicholls became Dean of the School at a time

of intense change. Hubert Owens had spent almost fifty years as the founder and chief advocate of Landscape Architecture at UGA. Dean Nicholls guided the School through a transition from its founding to increasing enrollments and new directions. The construction of Caldwell Hall is just one successful example of a project begun under Dean Nicholls. Caldwell was built to answer infrastructure problems caused by the School's growth and its expanding role in interdisciplinary endeavors on campus.

In the early 1960's, Professor Nicholls was very active in helping to expand the American Society of Landscape Architects in the Southeast. When he first served as an officer in 1965, Georgia was a section of the Southeast Chapter. He was also heavily involved in NCILA (the predecessor to CELA, the Council of Educators in Landscape Architecture). He was the School's Graduate Coordinator for ten years, served on eight ASLA/LAAB Accreditation Teams, and spent almost twenty years volunteering with community service organizations. Professor Nicholls has earned dozens of honors, including Fulbright Scholar, Ravenshead Traveling Scholar, and membership in three honor societies. He is a registered architect and landscape architect.

Bob Nicholls has spent his career at the University of Georgia, dedicating himself to education, the School and his community. His record shows an individual who worked hard to take the School from a department to a college. He developed policies, administered procedures and guided the School to new heights of excellence by his vision, hiring of excellent faculty and staff and recruitment of exceptional students. Alumni from the era of Dean Nicholls are presently some of the School's most active and successful. His impact on the School will resound for many years to come.

### FACULTY NOTES

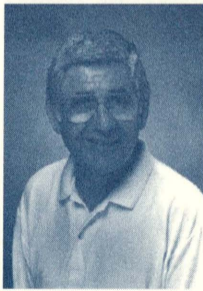
Professors Darrel Morrison and Lucia Athens will be on leaves of absence from the University during the 1996-97 academic year. Lucia will be working toward a Ph.D. in Whole Systems Design at Antioch University in Seattle. Darrel can be reached through the University of Michigan's Landscape Architecture Department at Ann Arbor where he will be teaching and writing. Professor Mary Anne Albanza Akers will be on maternity leave for a portion of Fall Quarter 1996.

### NEW FACULTY EMERITUS

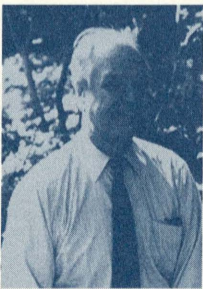
Emeritus status was recently conferred upon three retired SED faculty members. Bob Hill and William Beery are now Associate Professors Emeritus, and Charles Aguar is now Professor Emeritus. All of these professors have been creative and capable teachers and administrators to whom generations of students—now mature practitioners serving the state and the nation—owe instruction and guidance.

### NEW FACULTY

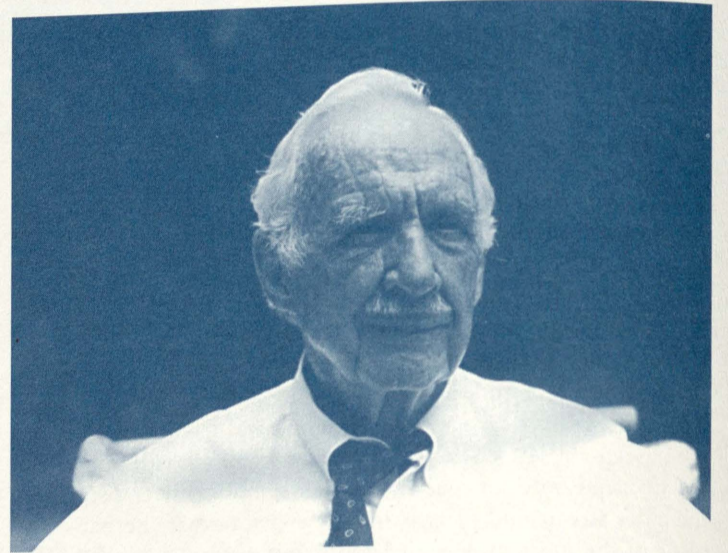
Kwesi DeGraft Hanson has joined the faculty of the SED as an assistant professor of Landscape Architecture. Kwesi is an alumnus of the School (MLA '90) and has been teaching at the Gwinnett Technical Institute since 1993, as well as working with Bishop Planning Consultants of Atlanta. Kwesi was born in Cambridge, England, and earned his Bachelor's degree in Geography from the University of Ghana in West Africa. He is scheduled to teach courses in construction in the BLA program.



William Beery



Bob Hill



### John W. Linley, Jr.

## 1916 — 1996

PRATT CASSITY AND LISA VOGEL

John Linley was a true original: a practicing architect, much-loved professor, the author of three books on Georgia's architecture (*The Georgia Catalogue: A Guide to the Architecture of the State*, *Architecture of Middle Georgia: The Oconee Area*, and one to be published posthumously), an exemplary gardener, star of REM's "Shiny Happy People" video, stellar entertainer, quintessential southerner and a true gentleman. Everyone who has known him as a teacher, drinking buddy, friend, or colleague admired and respected his individuality, keen sense of humor, and class.

John was a lover of modern architecture and had a complete understanding of and utter devotion to the work of Frank Lloyd Wright. This gave him a unique viewpoint on historic preservation that many of us appreciated. Recently, he was annoyed when he learned that some of the buildings he designed for the State of South Carolina early in his career were listed in the National Register of Historic Places. He felt that they were not historic and hardly remarkable. They were good, solid, utilitarian designs for a state park; any of us would recognize their eligibility for the Register . . . but not John. His opinions about his own work were as strong as his devotion to the study of exquisite architecture; this devotion made his classes an inspirational experience. The ultimate circle was completed when we learned that one of his former students (an MHP graduate) had prepared the National Register nomination. John's style and uncompromising way of dealing with protocol will be missed, but it will not go undocumented or unappreciated.

In addition to the many students and colleagues he has inspired, perhaps John's greatest legacy is the exquisite gardens he designed and planted at his home in Athens. As described by Beverly Cox in a recent feature in the Athens Banner-Herald, it is "a garden of immense detail, abundant growth and hidden treasures." On the landscaped acre behind John's house, stone paths wind comfortably down a terraced slope through a series of soothing garden rooms. At the bottom is a trickling creek, meandering past exposed rock and verdant moss. Throughout the garden are classic Georgia natives: azaleas, dogwoods, rhododendrons, a pecan, pines, and a great number of colorful annuals and perennials. It is a serene place that many of us have been fortunate enough to enjoy.

A scholarship fund to honor John and provide scholarships for SED students is being established by friends. Refer to "Development Update" on page 21 for more information.

## Survey of Landscape Architecture Graduates

DAVID NICHOLS

During the summer of 1995, the SED conducted a survey of its recent landscape architecture graduates to assess two areas: general information about each respondent's professional career after leaving the University, and the graduates' perceptions of how effectively the program had prepared them for their careers.

A questionnaire was sent to three groups: BLA graduates from 1990 through 1994, MLA graduates from 1990 through 1994, and BLA graduates from 1984 through 1989. The SED had surveyed the 1984-89 group before; the 1995 survey thus served as a follow-up for the original population. The Institute for Behavioral Research at UGA accumulated the results and performed statistical analyses for both surveys.

In addition to general information on type of practice, licensure, and salary range, graduates were asked to respond to 52 items derived from course objectives of the faculty of the School. The items covered areas such as plants and planting design, construction and engineering, design, architecture, design history, professional practice, and computer applications. For each item, the graduates were asked what level of competency was required once they entered the profession and what level of competency they felt was provided by the program in the SED.

With the guidance of the Institute for Behavioral Research, the School was able to identify items for which differences between the two levels were statistically significant. All three groups felt the level of competency provided at the University was significantly less than that required in the profession for the following items: written communication skills, general business practice, and desktop publishing techniques. Both the BLA and MLA graduates from 1990-94 agreed that the levels of competency provided for the following items were less than those required in the profession: cultural requirements of herbaceous perennials, plant installation procedures/specifications, construction materials, verbal communication skills, and contract document preparation.

The survey groups found various other items for which the perceived level of competency provided by the SED and that required by the profession were unequal. The findings of this survey, along with the recent accreditation visits, provide some quantitative measurements to use in updating the curriculum. Hopefully, the faculty of the SED will consider these findings when revising the curriculum to fit the coming semester system.

## Faculty Honors

### LEO ALVAREZ

- American Society of Landscape Architects Florida Chapter, Service Award for Serving on Executive Committee, 1995.
- Excellence Award for Outstanding Service as a Jury Member, American Society of Landscape Architects Florida Chapter, Annual Design Awards Program, 1995.
- Nominated for participation in the Faculty Development Workshop program sponsored by Chancellor Portch (one of seven faculty nominated from a field of 30).

### PRATT CASSITY

- 1996 Award for Outstanding Achievement in the Field of Preservation from the Georgia Trust for Historic Preservation.

### BRUCE FERGUSON

- Selected for biographical profile in 24th edition of Who's Who in the South and Southeast, 1995.
- Honorable Mention Award for Education and Public Service in Water Resources, presented by Universities Council on Water Resources to Georgia Board of Regents' Scientific Panel on Evaluating the Erosion Measurement Standard Defined by the Georgia Erosion and Sedimentation Control Act, 1995.
- Selected for listing in American Men and Women of Science, 1994.

### MARGUERITE KOEPKE

- 1996 School of Environmental Design Honors Professor. This award, based on student evaluations, recognizes excellence in teaching performance and student interaction.

### CATHERINE HOWETT

- Selection as member of the Advisory Board for the June 1994 Symposium on History in Landscape Architecture, Pennsylvania State University. Co-chair for the general session "History in Landscape Architecture."

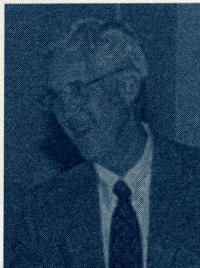
### DARREL MORRISON

- 1995-96 recipient of the Bracken Medal on March 25, 1996, by the Landscape Architecture Department at Pennsylvania State University. Among Previous Bracken Medal recipients are Sir Geoffrey Jellicoe, Garrett Eckbo, Ian McHarg, and Peirce Lewis.
- The National Wildflower Research Center landscape design in Austin, Texas was cited for the President's Award in the Texas Chapter of ASLA Annual Awards program in March 1996. Darrel Morrison, FASLA, was senior landscape architect on the project, in collaboration with Robert Anderson, ASLA, and Eleanor McKinney, ASLA, of Austin, TX.



Marguerite Koepke, shown here discussing a project with BLA student Andrew Wahlers, is the 1996 SED Honors Professor.

ANDY HAYS



Bill Ramsey is the recipient of the 1996 Distinguished Faculty Award from the SED Alumni Association.

### WILLIAM RAMSEY

- School of Environmental Design Alumni Association (SEDAA) Distinguished Faculty Award for 1996. The distinguished faculty member is selected by the SEDAA Steering Committee from nominations submitted by faculty, staff, or students at the SED.
- Josiah Meigs Award for Excellence in Teaching Nominee, 1995

### SCOTT WEINBERG

- Outstanding Faculty Award-Golden Key National Honor Society (1995)
- National Vice President-Sigma Lambda Alpha (1991-1995)

# Alumni News

## MHP Alumni Reunion

LISA VOGEL

Alumni of the SED Master of Historic Preservation program gathered October 12, 1995, for their annual reunion during the National Preservation Conference in Fort Worth, Texas. The reunion, organized by SED alumna and National Trust employee (at the time) Sarah Dillard, was held at The Flying Saucer, a funky pub in a historic downtown building. Surrounded by an artsy but rustic decor in the rehabilitated commercial building, alumni, current MHP students, and SED faculty (current and former) met and drank imported draft and bottled beer and chatted—we were reminded of similar evenings at The Globe.

Some of the long-gone friends and colleagues present included Glen Worgan (Philadelphia, PA),

Sarah Dillard (Washington, DC), Bill Kelly (Columbia, SC), Lynne Braddock Zollner (Little Rock, AK), Ellen McDowell (Baton Rouge, LA), Amy Masterman (Staunton, VA), Greta Terrell (Atlanta, GA), Melissa Pickett Hudgins (Washington, DC), Shannon Reynolds (Tifton, GA), Tiffany Strickland (Dallas, TX), Anne Catherine Christian (Atlanta, GA), Ellen Andrews (Brunswick, GA), and former SED professor Bill Chapman (Honolulu, HI).

Current SED faculty Pratt Cassity, Ian Firth, Richard Westmacott and Lisa Vogel were also there, and current MHP students there included Ken Kocher, Marcus Watson, Sheila Koehler, Elaine Kiernan, Peggy Callister, Nicole Diehlmann, and Autumn Rierson.



LISA VOGEL

## Alumni Weekend '96

RICH MANDELL

The biggest turnout of returning alumni in years found old friends, interesting speakers, and lots of fun and camaraderie at Alumni Weekend '96. Friday's Spring lecture by Stu Dawson of Sasaki Associates got everyone's design juices flowing as he discussed how big cities have over the years utilized sports as a base point to improve quality of life. He also shared with us how other Olympic cities have dealt with what Atlanta has been going through the past few years. Saturday, John Santacrose of the New York Audubon Society shared many environmentally sensitive design ideas landscape architects can use to further strengthen ties to the land.

Saturday morning, our alums took over center stage. Lucy Lawliss discussed her research into the work of the Olmsted firm in the South. Audience members had a greater appreciation for the difficulties experienced in dealing with the Olympics after a round table discussion by four of our own (Rick Pariani, Roy Ashley, Jerry Connor, and Nimrod Long) who are involved in Olympic site design. The alumni were treated to brief introductions of our new faculty members during Alumni Information '96. Edah Grover wrapped the day's presentations off by showing why she was chosen as this year's recipient of the Distinguished Alumni Award.

A fantastic dinner at The Georgian Hotel downtown allowed new and old alumni to share some fun times. Sunday morning greeted the 2nd Annual Golden Hoe Open at the UGA Golf Course and the first (hopefully of many) Croquet Tournament at the Founders' Gardens. Many alums remarked that they enjoyed the variety in the program this year and have promised to bring their friends next year. Make your plans now! Alumni Weekend '97 will be April 18-20.



ANDY HAYS

Top: Truitt Rabun (BLA '70) mastered the croquet course during Alumni Weekend.

Above: "So it is SED. . . '96" was exhibited at the Alumni Weekend opening reception.



ANDY HAYS

Right: Alumni Weekend visitors enjoyed lunch in the garden.

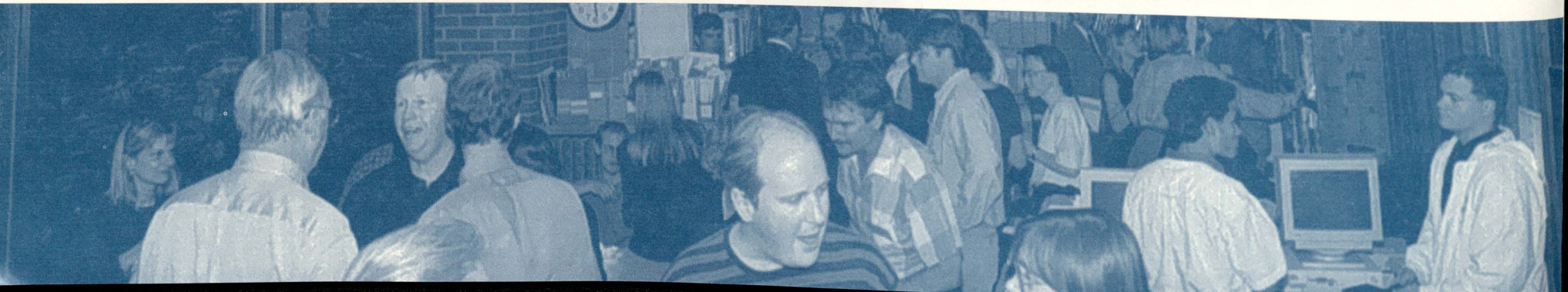
Above: Work of ASLA Student Award nominees was on display for alumni to enjoy.

Below: Alumni, students, and faculty mix at the opening reception.



ANDY HAYS

ANDY HAYS



# Alumni News

## ALUMNI NOTES

### BLA ALUMNI

**Tom Breedlove (BLA '95)** is a master planner with the University of Georgia Office of Campus Planning.

**Ed Corrigan (BLA '95)** is with Edward Pinckney and Associates of Hilton Head, South Carolina.

Ryce, Hoopes & Fincher have a number of recent SED graduates: **Brad Davis (BLA '95)**, **Krista Coleman (BLA '95)**, **Joe Hoyle (BLA '95)** and **Mickey O'Brien (BLA '94)** are in the Atlanta office; **Linda MacBeth (BLA '95)** is in the firm's office in Destin, Florida.

**Brian Day (BLA '95)** is with Rochester and Associates of Gainesville, Georgia.

**Ken Haines (BLA '95)** is with EDAW, Inc. in their Atlanta office.

**Chris Higdon (BLA '95)** is with the Institute of Community and Area Development at the University of Georgia.

**Brad Jones (BLA '95)** is with Ecos Environmental Design in Atlanta.

**Marc Morrow (BLA '95)** is a landscape architect with Kindercare in Montgomery, Alabama.

**Evan Rogers (BLA '95)** is with Land Plus Associates of Atlanta.

**Rob Westmore (BLA '95)** is with Landplanning Collaborative in Asheville, North Carolina.

**Mark Wilson (BLA '95)** is now with Design Associates in Asheville, North Carolina.

**Chris Adamson (BLA '94)** and **Kevin Baer (BLA '94)** are now with Beall Gonnsen & Company in Athens, Georgia.

**Ron Bull (BLA '94)** and **Hunter Ramon (BLA '94)** recently joined Tunnel-Spangler in Atlanta.

**Russell Hall (BLA '94)** recently joined Development Consultants Group in Duluth, Georgia.

**Nancy Hamburger (BLA '94)** has recently gone to work with Dan Franklin in his residential design office in Atlanta.

**Reide Onley (BLA '94)** is now with Nimrod Long and Associates in their Atlanta office.

**David Stith (BLA '93)** has assumed responsibilities for new landscape development at Atlanta Post Properties complexes.

**Phillip Crawford (BLA '91)** has relocated to Raleigh, North Carolina, where he is practicing residential design.

**Jennifer Carr (BLA '90)** is with Hugh Dargan and Company in Atlanta.

**Alan Gray (BLA '88)** has recently joined EDAW, Inc. at their Atlanta office.

**James Russell Johnson (BLA '88)** is now with Hellmuth, Obata, and Kassabaum, Inc. in Atlanta.

**Sandy Phillips (BLA '88)** has recently joined Breedlove Land Planning, Inc. in Conyers, Georgia.

**Jim Teller (BLA '87)** has relocated to Maryland to take a position with a property management and development firm.

**Carlos Preston (BLA '83)** is owner and landscape architect of City Park Equipment of Toa Baja, Puerto Rico. His company represents site furniture and play equipment manufactureres from the U.S. He is also a member of the Puerto Rico Association of Landscape Architects.

**Tim Thoms (BLA '81)** has started Christmas Acres, a new company specializing in plant material procurement and availability sourcing for contractors and landscape architects. The company has offices in Fayetteville, Georgia.

**Katherine Ruth Bridges (BLA '77)**, landscape architect with the city of New York Parks and Recreation Department, recently received an Award for Excellence in Design from the NYC Art Commission. The award was for the master plan and phase I development for the 190-acre Blue Heron Park on Staten Island.

The Harvard University Graduate School of Design has selected **George Hargreaves (BLA '77)** as the Chairman of the Department of Landscape Architecture.

**Mark Emerson Hollinger (BLA '76)** is Vice President and Principle Golf Architect with JMP Golf Design Group of Saratoga, California and Kuala Lumpur, Malaysia. His firm designs courses in Southeast Asia, Europe and the U.S.

**Sara Katherine Williams (BLA '76)** was a recipient of the University of Florida's 1995-96 Teaching Improvement Program Award. Sara and her husband, **Robert Grist (MLA '76)**, teach in the Department of Landscape Architecture at Florida.

**Jay Scott (BLA '75)** has started Scott Land Planning and Design, Inc., a new firm in Atlanta.

**Andrew Platovsky (BLA '71)** and **Nancy Owens** recently won an Award for Excellence in Design from the Art Commission of the City of New York for their Design of the Veterans' Memorial Garden at the Queens Borough Hall in Queens, New York.

**Gordon Chappell (BLA '68)** is Co-author of *The Gardens of Colonial Williamsburg*, published by the Colonial Williamsburg Foundation.

### MLA ALUMNI

**Brad Nestor (MLA '96)** is now with Niles Bolton Landscape Group of Atlanta.

**Tim Bemisderfer (MLA '95)** is with Exploration Resources, Inc., in Athens, Georgia.

**Ron Sawhill (MLA '95)** is an instructor of landscape architecture at the School of Environmental Design.

**Ashley Steffens Calabria (MLA '94)** is a part-time instructor of landscape architecture at the School of Environmental Design.

**Mary Hughes Frye (MLA '95)** is with the National Forest Service at the Jefferson National Forest in Virginia.

**Molly Pike (MLA '95)** is with Mays, Suddreth and Etheridge in Nashville, Tennessee.

**Alan Spell (MLA '95)** is a landscape architect with Oglethorpe Power Corporation in Atlanta.

**Don Staley (MLA '94)** has recently joined the faculty of Landscape

Architecture at Texas Tech

University in Lubbock, Texas, as an Assistant Professor

**Amitabh Verma (MLA '94)** was recently awarded the Neel Reid Research Fellowship from the Peachtree Garden Club. Amitabh is with Surber Barber Architects of Atlanta.

**Kwesi DeGraft-Hanson (MLA '90)** has recently joined the faculty of the School of Environmental Design. See "New Faculty" on page 6.

### MHP ALUMNI

**Cari Goetcheus (MHP '96)** is Coordinator of the Cultural Landscape Inventory with the Southeast Field Area of the National Park Service in Atlanta.

**Sherry Anderson (MHP '95)** works with Janus Research of St. Petersburg, Florida.

**Amy Masterman (MHP '95)** is the new Executive Director of the Historic Staunton Foundation in Staunton, Virginia.

**Wendy Price (MHP '95)** has recently accepted a position as Assistant Professor in the Historic Preservation Department at Mary Washington College in Fredericksburg, Virginia.

**Joany Janicki (MHP '94)** is an architect with Dream Space of Vienna, Virginia.

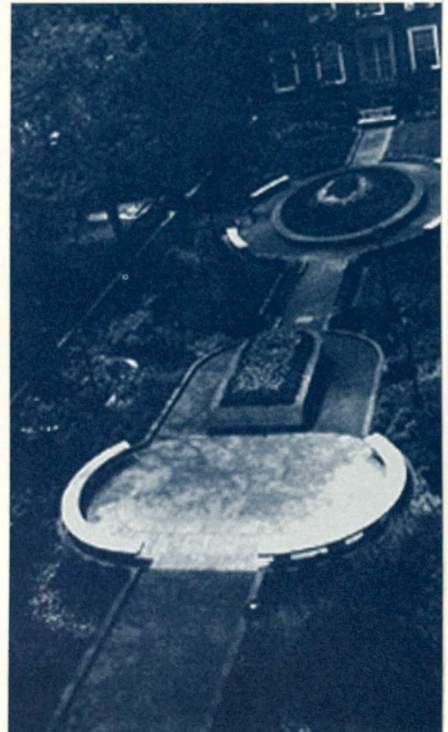
**Michelle Michael (MHP '94)** is with Preservation North Carolina in Raleigh, North Carolina.

**Bryan Townes (MHP '94)** recently joined Surber Barber Architects of Atlanta.

**Sarah Dillard (MHP '93)** has recently accepted a position with the National Park Service in Washington, DC. Sarah is a researcher with the National Register of Historic Places.

**Jennie Clower Siegenthaler (MHP '89)** is Head of Historic Houses and Gardens with the Atlanta History Center in Atlanta, Georgia.

Every effort is made to provide the most current information on our alumni. If you discover any inaccuracies, please let us know



Veteran's Memorial Garden designed by Andrew Platovsky (BLA '71) and Nancy Owens.

Do you have information or news you would like to share?  
Do you have comments or suggestions for future newsletters?  
Please stay in touch with the School of Environmental Design.

### RETURN TO:

SED NEWS, School of Environmental Design, The University of Georgia  
609 Caldwell Hall, Athens, GA 30602-1845

Information or news you would like to share or suggestions for future newsletters

Name \_\_\_\_\_ degree/date \_\_\_\_\_

Home address and phone \_\_\_\_\_

Firm name \_\_\_\_\_

Type of organization \_\_\_\_\_

Occupation and title \_\_\_\_\_

Responsibilities \_\_\_\_\_

## ARTWORK BY WILLIAM BEERY



### NOTE CARDS

Price: \$6 for set of 10

### PRINTS

17" x 14"

Price: \$25 each

Mail orders to  
SED News  
School of Environmental Design  
609 Caldwell Hall  
University of Georgia  
Athens, GA 30602-1845  
or call 706-542-4776



### SEDAA STEERING COMMITTEE (1996-1997)

Clay Mooney (BLA '79)  
President

Brad Good (BLA '78)  
Past President

Rick Pariani (BLA '77)  
President-Elect

Sandy Phillips (BLA '88)  
Secretary

Laura Byington (BLA '82)

Rich Mandell (BLA '90)

Lisa Vogel (MHP '93)

Tom Kolas (BLA '78)

Hoyt Fincher (BLA '71)

Bill Kelly (MHP '93)

Bill Edenfield (MLA '78)

Stephanie Gibbs (MLA '95)

Reide Onley (BLA '94)

Jay Scott (BLA '75)

#### Ex officio members:

Kerry Dawson  
Dean of the SED

Allen Stovall  
SED Development Director

Thanks and appreciation to the following steering committee members who ended their terms in 1996:

Tim Thoms (BLA '81)

Tommy Holcombe (BLA '72)

Roy Ashley (BLA '64)

## GROVER RECEIVES 1996 DISTINGUISHED ALUMNI MEDAL

This year's Distinguished Alumni Medal was presented to Edah Brittain Grover (MLA '78) during Alumni Weekend (April 19-21). In 1981, Edah founded Grover, Harrison and Harrison, which became Grover and Harrison in 1993, and until 1996 served as the firm's president.

Under her leadership, the firm has received a number of local, regional, and national design awards and was featured in "Starting Fresh: the New Firms of the 90's" in the March 1994 issue of Landscape Architecture magazine.

Now semi-retired, Edah balances her time between serving as consultant to Grover and Harrison, playing golf with her husband, Philip, and serving on various civic and professional boards in the Birmingham community.



### DISTINGUISHED ALUMNI MEDAL

#### REQUEST FOR NOMINATIONS

The School of Environmental Design Alumni Association Steering Committee requests nominations for its Distinguished Alumni Medal.

The purpose of this award is to recognize School of Environmental Design Alumni who have contributed substantially by way of outstanding professional achievement to the reputation and well-being of the University of Georgia, SED. This is the highest award given by the School of Environmental Design Alumni Association.

The criterion for this award is outstanding professional achievement, which can occur in a wide range of activities within the disciplines associated with the School of Environmental Design. These activities may include:

1. Excellence in executed works of landscape architecture.
2. Public Service and/or administration.
3. Professional school instruction.
4. Writing, research, or other scholarly endeavors.
5. Direct service to the School of Environmental Design.

School of Environmental Design alumni can be nominated by any alumnus, by any faculty member, or by any student. All nominations must be accompanied by a letter of recommendation and a résumé of the nominee's professional activities which warrant his or her consideration. All nominees will be voted on by the Alumni Association Steering Committee at their fall meeting. Members of the Steering Committee are not eligible during their terms. Please send all nominations by September 6, 1996 to:

**Clay Mooney**  
Design Associates  
22 S. Pack Square Suite 304  
Asheville, NC 28801  
704-258-2988  
704-258-2856 (FAX)

## Thanks!

The SED Alumni Association (SEDAA) thanks the following sponsors of SEDAA Activities:

Advanced Drainage Systems, Inc.

Century Rain Aid

Hickory Hill Landscaping

Rain Bird Sales, Inc.

Southern Tree & Landscape Co.

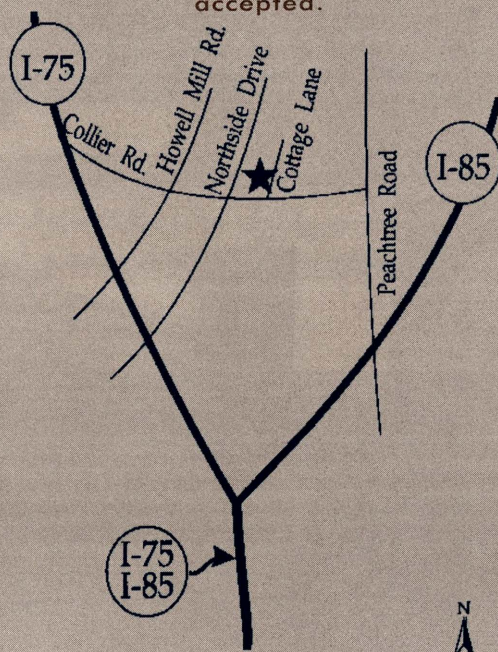
### LET'S GATHER IN DAN'S GARDEN FOR A FALL SOCIAL

Friends and alumni of the UGA  
School of Environmental Design

Dan Franklin's Garden  
2060 Cottage Lane  
Atlanta

Friday evening, September 13  
Six until Nine Casual

Donations to the UGA Foundation  
(earmarked SEDAA) will be gratefully  
accepted.



## Career Resources Network

GREGG COYLE

As an alumnus or alumna of the School of Environmental Design, your professional experience and knowledge of career opportunities in landscape architecture and allied fields make you a valuable resource to today's students and fellow alumni. The Career Planning and Placement Center at the University seeks your participation in its Career Resources Network (CRN). CRN members provide information about careers, employment prospects, communities, and other areas of concern. CRN members are not expected or asked to provide jobs; they are career resources. If you are interested in serving in or learning more about the CRN program, contact the University's CRN Coordinator at 706-542-3375.

## Alumni Reception at ASLA

The Cleveland reunion of SED alumni was attended by thirty-two alumni, twelve SED students, and five SED faculty. The Cleveland meeting introduced a new reunion format by ASLA that assigned University alumni locations within a large common floor space. A similar format is planned in Los Angeles for the Fall '96 meeting, so please plan to drop by!

**MISSING ALUMNI**

Please help us relocate alumni we've lost. If you have updated addresses for the following people, please let us know! Complete the update form on page 9 and mail it to the SED.

Mr. William Cary Anderson  
1733 Collingwood Drive  
Marietta, GA 30067-6350

Mr. Julio Ricardo Arteaga  
2362 Thompson Bridge Road, #C1  
Gainesville, GA 30501-1189

Ms. Carol Ann Ashworth  
162 Pamela Drive  
Athens, GA 30605

Mr. Gerald Gregory  
Atchley  
24 Collier Road NW, Apt. 11  
Atlanta, GA 30309-1720

Mr. Stanley Calvin Ayer  
3500 Honeycomb Drive  
Conyers, GA 30208-3665

Mr. John Ashley Bailey Jr.  
1 Longstreet Lane  
Savannah, GA 31411-1414L

LCdr Brian Edward Barrington  
36 Warren's Way  
Portsmouth, RI 00071-2322

Ms. Wanda Denise Baugh  
9 Ridge Run Road  
Marietta, GA 30067

Mr. Thomas Edwin Baur  
5152 Hemingway Circle, #2907  
Naples, FL 33999

Mr. Scott Thomas Beveridge  
2690 Valleydale Drive  
Conyers, GA 30207-2716

Philip Michael Blomgren  
2229 Knollwood Drive  
Topeka, KS 66611-1623

Mr. Timothy Jay Brenza  
650 Ritchie Highway  
Severna Park, MD 21146

Ms. Karen Rene Carter  
126 Glen Eagles Drive  
Winston-Salem, NC 27104

Mr. James K. Chilcoat, Jr.  
2926 Soscol Avenue, #28  
Napa, CA 94558

Mr. Michael Reddington Connolly  
762 Willow Creek Road  
Atlanta, GA 30328-3423

Mr. Earl Andrew Daymude  
c/o The Keith Compaines  
4-1579 Kuhio Hwy., Ste. 102  
Kapaa, HI 96746

Sheila Julia Dewart  
12 Clearwater Mall  
Clearwater, FL 34624-7301

Mr. Otis Lee Durham Jr.  
4771 N. Elkhart Avenue  
Milwaukee, WI 53211

Mr. Rodney Paul Evans, Jr.  
300 Village Lane  
Boise, ID 83702-6220

Shaun Gordon Foley  
1520 Navarre Blvd.  
Tallahassee, FL 32303

Mr. William Bryan Ford  
808 Twinsprings Wall  
Norcross, GA 30093-4355

Mr. William Brett Ganas  
136 Lake Place  
Athens, GA 30606

Mr. Daniel Eugene Gay, Jr.  
507 1/2 Wheeler St.  
Savannah, GA 31405

Mr Gregory Dewayne Grey  
P.O. Box 15893  
Augusta, GA 30919-1893

David Bruce Harrity  
35 Old Market Road  
Glastonbury, CT 06033-1241

Mr. Clarence W. Heyn, Jr.  
2421 19th Ave.  
Columbus, GA 31901-1450

Mr. Clifford Albert Hopkins  
Route 3 Box 238-B  
Washington, GA 30673-9803

Mr. William Robert Hurt, Jr.  
745 Lakeside Drive  
Robins AFB, GA 31098-1317

Ms. Daryn Serena Lee  
19220 Mapledale Ave.  
Woodbridge, VA 22193

Mr. Richard W. Loeffler III  
15 Colonial Blvd.  
Hillsdale, NJ 07642-2533

Mr. David Gerard Meyer  
828 Scenic View Court  
Atlanta, GA 30339

Craig Richard Nehasil  
9012 Hubbard Street  
Livonia, MI 48150

Mr. Scott Frederick Neitzel  
15255 Gray Ridge, #1115  
Houston, TX 77082

Ms. Deborah Leah Noles  
85-1 Peachtree Hills Ave.  
Atlanta, GA 30305

Mr. Glen William Norman  
4505 Blanchester Drive  
Lexington, KY 40515-4719

Mr. John Franklin Pettigrew  
245 Lexington Heights  
Athens, GA 30605-2319

Mr. Donald Phillips  
Phillips Construction & Design  
100 W. 6th Street

Mr. Donald Robert Rainey  
121 Tillman Lane  
Athens, GA 30606

Mr. Matthew James Reginer  
235 Little St. #5  
Athens, GA 30605

Mr. David Boyd Rice  
25 Wiltshire Drive  
Avondale Estates, GA 30002

Mr. Robert Thurman Rivers  
c/o Mr. Thurman Rivers, Jr.  
120 High Ridge Drive  
Athens, GA 30606

Mrs. Susan Bradford Robertson  
114 Wildwood Drive  
Walterboro, SC 29488

Ms. Donna Gayle Rogers Sparks  
P.O. Box 82  
Fort Payne, AL 35967-0082

Mr. Jeffrey Scott Stucker  
466 Michael Place  
Sebastopol, CA 95472-3209

Mr. Eungchul Suh  
Dept. L.A., Taegu University  
Kyung-San Korea 713-714

Mr. William Chandler Sutton  
5 Putnam Street, #3-R  
Somerville, MA 02143-1715

Mr. Fumiaki Takano  
Takano Landscape Planning Co.  
2-17-23 Higaski Nakano/Nakawku  
Toyko Japan

Mr. Richard Wright Vaughn  
Wilson Development Co.  
Atlanta Div.  
300 Technology Ct., Ste. 75  
Smyrna, GA 30082-5236

Mr. Robert Wolseley Vories  
78 Carrington Road  
Hendersonville, TN 37075-4057

Mr. Michael Bruce Wells  
944 Betts Creek Drive  
Auburn, GA 30203

Mr. Stephen Arnold Wenzloff  
Admirals Point  
Hiawassee, GA 30546

Mr. Paul Edward Wise  
1253-H Beacon Pkway, East  
Birmingham, AL 35209-2545

Mr. James Downey Young  
1267 Reeder Circle, NE  
Atlanta, GA 30306-2270



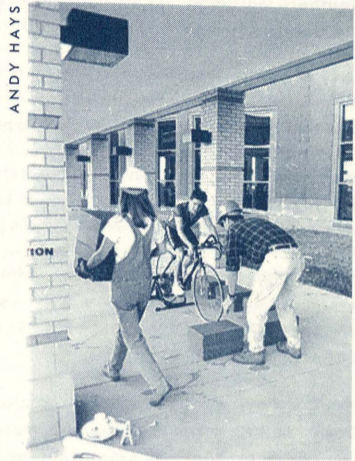
## A New Angle for Georgia LANDscape

ERIC SHRINER

*Georgia LANDscape '96* documents a series of "demonstration gardens" addressing the theme, "NORmalady."

NORmalady: a pathological tendency to define people, behavior, language and places in terms of that which is tacitly understood as normal. What is not normal? The "normal" excludes, isolates and marginalizes that which lies outside it. What is normal? Unquestioned, the normal deafens us to difference and the creative dialogue liberated at the so-called margins.

What is a demonstration garden? Traditionally, a demonstration garden acts as a medium for displaying and communicating techniques, materials and applications of gardening. *Georgia LANDscape* expands the "garden" to include the social, political and cultural landscapes that together constitute our physical environment. The demonstration gardens performed in 1995-96 and documented in *Georgia LANDscape* reveal and reflect upon the NORmalady assailing our environment.



ANDY HAYS  
TON  
*Georgia Landscape* staff hold a demonstration garden at the Ramsey Student Physical Activities Center.

## Student Historic Preservation Organization

PEGGY CALLISTER

SHPO members participated in a variety of activities fall and winter quarters. Members contributed to the Adopt-A-Highway clean-up, the Athens-Clarke Heritage Foundation's Holiday Auction and an internship workshop held for the benefit of first-year MHP students. SHPO members were also on hand to help out around the Shields-Ethridge Farm on Mule Day.

In spring quarter, SHPO members served as volunteers for the SED Alumni Weekend. National Historic Preservation week (May 19-26) capped off the year with five days of events and activities.

The 1995-96 SHPO officers were Peggy Callister, President; Holly Anderson, Vice President; Diana Miles, Treasurer; Jenny Buerkert, Secretary

## Graduate Student Organization

DAVID SPOONER AND TERI NYE

GSO's goal this year was to inject the graduate curriculum with interdisciplinary ideas from UGA as well as from off-campus sources. We sought to make use of the resources within our own university while interacting with students from other schools and exploring future avenues of practice.

The GSO-sponsored lunch-time lecture series brought in speakers from a wide variety of backgrounds. Richard Westmacott from the SED, Ron Carroll from the Institute of Ecology, and Nancy Clark from Binney-Smith presented on everything from African American gardens to acrylic paints.

In conjunction with this effort, a reading list was compiled of the most influential/important books or other forms of communication that students of landscape architecture should see or read. The list was collected from the SED faculty and any other interested parties and was made available to all members and participants.

The GSO also conducted several field trips including a tour of offices in Atlanta where the firms of ECOS and EDAA were visited. A second field trip was to the Athens area recycling facility. Students gained a better understanding of what items can be recycled, how the process works, and where recycled materials go.

Members of the GSO were instrumental in getting some exciting lectures organized for the SED as well. Our vice president, David Tuch, initiated the John Tillman Lyle visit (see "Lectures & Exhibits," page 4). During a charette with Professor Lyle, students explored the possibilities of creating a living classroom on campus where environmental education would take place in the environment. SED faculty members Lucia Athens, William Mann, and Richard Westmacott, and Elgene Box from the Department of Geology, participated along with Lyle in a critique of the solutions generated.

GSO member Jolie Kaytes initiated a visit and lecture from Kenneth Helphand of the University of Oregon. During his two-day stay, he presented a compelling lecture entitled "Defiant Gardens," joined students for a dinner discussion, and briefly visited a graduate seminar.

GSO officers for 1995-96 were David Spooner, President; Dave Tuch, Vice President; Beth Brock, Secretary; Christine Magnarella, Treasurer; Teri Nye and John Brewster, Public Relations.

John Lyle led SED students in an intense charette.



PHOTOS BY BRIAN ELLISON



## Sigma Pi Kappa Historic Preservation Honor Society

Sigma Pi Kappa initiates and officers.

### 1996 INITIATES

Corinne Blencoe

Jenny Buerkert

Melissa Cliett

Nicole Diehlmann

Stephanie Foell

Sheila Koehler

Chloe Mercer

Diana Miles

Michele Reich

Marcus Watson

James Womack

HONORARY INITIATE:

Grady Clay



LISA VOGEL

## Research News

### RECENT FACULTY PUBLICATIONS

#### BOOKS AND REPORTS

Alvarez, Leo with Cheryl Mihalko. *Stone Mountain Sustainable Community Land Plan Report*. June 1995

Cassity, Pratt W. and Tom Reynolds. *East Lawrence Design Guidelines: A Project to Identify and Protect the Visual Character of a Neighborhood*. Prepared for the City of Lawrence, Kansas. September, 1995.

Cassity, Pratt W. *Office of Preservation Services. Georgia Alliance of Preservation Commissions 1995 Directory*. November 1995.

Cassity, Pratt W. *Training Manual: Making Defensible Decisions*. A notebook for participants at the Annual Georgia Preservation Commission Training Workshop, University of Georgia Center for Continuing Education. Office of Preservation Services, 1995.

Ndubisi, Forster, T. DeMeo, N. Ditto, and D. Wehlau. *Directing Change in the Landscape: Guiding Development on Sensitive Lands Report*. Athens, Ga: Institute of Community and Area Development and School of Environmental Design. 130 pp. Funded by the Georgia Department of Community Affairs, Northeast Georgia Regional Development Center, and Developers Association of Walton County. 1995

Ndubisi, Forster. *Collaborative Planning and Design: Learning from East Athens Revitalization Study Report*. Athens, Georgia: Institute of Community and Area Development. 80 pp. (In Press). 1994.

Shoemaker, Rene with Nadine Cohen. *Reference Sources in Architecture*. August 1995.

Weatherly, Neal, Jr. with Midcap, James T. and Melvin P. Garber, *Landscape Plant Materials for Georgia*, Reprint Bulletin 625, 35 pages. 1995

Weatherly, Neal, Jr. with Melvin P. Garber, Kim D. Coder, and James T. Midcap, *Treescape: A Citizens Guide for Urban Tree Plantings*, Revised Bulletin 842, 19 pages. 1995.

Westmacott, Richard N. with T. Worthington (in press). *Agricultural Landscapes: Towards the Year 2000*. Cheltenham, England; Countryside Commission.

#### PUBLISHED ARTICLES AND CHAPTERS IN BOOKS

Athens, Lucia. "The Dangers of Stability," in *Platform Newsletter of the University of Texas, School of Architecture*, p. 1., Fall 1995

Cassity, Pratt W. "Vernacular Historic Resources and Neighborhood Design Standards; The East Lawrence Project Abstract," in *Vernacular Architecture Forum*. August 1995.

Dawson, Kerry J. "A Comprehensive Conservation Strategy for Georgia's Greenways," in *Journal of Landscape and Urban Planning*. Elsevier Science, Amsterdam, Netherlands, Volume 33, p. 27-43. 1995

Dawson, Kerry J. "Ecotourism and Sustainable Development in Irian Jaya," in *Tourism Development and Landscape Change*. International Federation of Landscape Architects, Bangkok, Thailand, p. 97-105. 1995.

Ferguson, Bruce K., "Stormwater Infiltration for Peak-Flow Control," in *Journal of Irrigation and Drainage*, vol. 121, no. 6, p. 463-466. 1995.

Ferguson, Bruce K. "Downstream Hydrographic Effects of Urban Stormwater Detention and Infiltration," in *Proceedings of the 1995 Georgia Water Resources Conference*, Kathryn J. Hatcher, editor, Athens: University of Georgia Carl Vinson Institute of Government, pages 128-131. 1995

Ferguson, Bruce with W. Drew Lucas, "Establishing Dynamic Equilibrium in an Urban Setting," in *Proceedings of the 1995 Georgia Water Resources Conference*, Kathryn J. Hatcher, editor, Athens: University of Georgia, Carl Vinson Institute of Government, pages 264-267. 1995

Ferguson, Bruce K. "Estimation of Direct Runoff in the Thornthwaite Water Balance," accepted for publication in *Professional Geographer*. (In press)

Ferguson, Bruce K. "The Maintenance of Landscape Health in the Midst of Land Use Change," accepted for publication in *Journal of Environmental Management*. (In press)

Howett, Catherine. "Cultivating a Sense of Place: History and Memory in

Southern Gardens." Symposium paper published in *Perennial Notes 10*, the Georgia Perennial Plant Association. 1995

Levy, Claudia. "No Pioneers!", in *Renewing the American City*, Proceedings of the American Society of Landscape Architects 1995 Annual Meeting, American Society of Landscape Architects, 1995.

Morrison, Darrel with Raymond Nuesch. "Native Plant Revegetation Suggests New Ways to Manage Power Line ROWs." in *Restoration and Management Notes Abstract 12:1*, p. 95.

Ndubisi Forster, T. DeMeo, and N. Ditto. "Environmentally Sensitive Areas: A Template for Developing Greenway Corridors." in *Landscape and Urban Planning*. Vol. 33, pp. 159-177. (Special issue on greenways). 1995

Ndubisi, Forster. "Approaches to Ecological Planning: A Brief Note." in *CELA 1995 Referred Published Abstracts*, Council of Educators in Landscape Architecture Annual Meeting, Ames, Iowa. 1995

Ndubisi, Forster. Book Review of "Saving American's Countryside: A Guide to Rural Conservation." Baltimore: The John Hopkins University Press. 306 pp (1989, Stokes, S.N. and A.E. Watson Eds.). 1995.

Nichols, David B. "Development of an Urban Waterbody Education Plan for Georgia" in *Proceedings of the 1995 Georgia Water Resources Conference*. Kathryn Hatcher, ed. University of Georgia. Carl Vinson Institute of Government. pp. 353-355, 1995.

Nichols, David B. "The Effects of Maintenance Levels on the Appearance of Open Celled Pavers." in *Proceedings of the Council of Educators in Landscape Architecture Annual Conference Abstract*. Gina Crandell, ed., Landscape Architecture Foundation. 1995.

Nichols, David. "Implementation of Design Through the Construction Process." in *Landscape Architecture Registration Exam Review Manual - Section 7*, Georgia Chapter of the American Society of Landscape Architects Annual Registration Exam Review. 1995

Nichols, David. "Integration of Technical and Design Details." in *Landscape Architecture Registration Exam Review Manual - Section 5*, Georgia Chapter of the American Society of Landscape Architects Annual Registration Exam Review. 1995.

Reinberger, Mark. "The Baltimore Exchange," chapter for *The Architectural Drawings of Benjamin Henry Latrobe*, Jeffrey A. Cohen and Charles Brownell, Yale University Press, pp.637-661, 1995.

Reinberger, Mark with Kathryn Franks. "Happy Valley, Tennessee and Enka, North Carolina: Model Industrial Communities in the Upland South," in *Proceedings of Sixth National Conference on American Planning History*, 1995.

Reinberger, Mark. "Recent Discoveries in Colonial Philadelphia Landscapes," in *Landscape Architect and Specifier News*, pp. 36-38, March 1995.

Reinberger, Mark. "Benjamin Henry Latrobe's Ideas on Nature and Culture in the American Landscape," in *Council of Educators in Landscape Architecture Conference Abstracts*, Ames, Iowa, 1995.

Waters, John. "Preservation Planning at UGA," in *NCPE News*, Vol. 2, No. 2, Newsletter of the National Council for Preservation Education, Spring/Summer 1995.

Weatherly, E. Neal, Jr., James T. Midcap and Alexandria L.A. Archer, "Adapting MacRapid Plant Selector Software for Student/ Customer Self-Instruction," in *SNA Research Workers Conference Proceedings*. 1995.

Weinberg, Scott S. "DTM-Golf Course Applications," in *Landscape Design Magazine*. 1995

Westmacott, Richard. "Preserving a Balance: Farmers Attitudes Toward Nature," in *Proceedings of the National Association of Olmsted Parks/National Park Service Conference*, Biltmore, NC, April 20-23, 1995.

#### CITATIONS

Firth, Ian. *National Park Service Making Educated Decisions: A Landscape Preservation Bibliography* edited by Charles Birnbaum and Cheryl Wagner. USDI National Park Service, Cultural Resources, Preservation Assistance Division, 1994. (3 citations)

Mann, William. Andrews, Martin. Book review of *Landscape Architecture: An Illustrated History in Timelines, Site Plans and Biography*, by William A. Mann, in *(British) Landscape Design* (v. 235, November 1994, p. 93).

Mann, William. Short, Brian, Book review of *Landscape Architecture: An Illustrated History in Timelines, Site Plans and Biography*, by William A. Mann, in *the British Journal of Aesthetics* (v. 35: no. 1, January 1995, p. 79).

## Research News

### RECENT FACULTY LECTURES

Akers, Mary Anne Alabanza. "Organizational Characteristics Related to the Productivity of Community Development Corporations." Presented at the 37th Annual Meeting of the American Collegiate Schools of Planning, Detroit, Michigan, October 1995.

Alvarez, Leo. "Fractal Geometry: Applications to Landscape Architecture." Presented at the American Society of Landscape Architects Florida Chapter Annual Conference. Key West, Florida, July 28, 1995.

Cassity, Pratt. "Design Review: Public/Private Interests;" "Accessibility and Historic Preservation: A Training Session for Historic Preservation Commissions on the Americans With Disabilities Act;" "Historic Preservation Short Course: Planning Tools for Managing Historic Districts;" and "A Regional Mobile Workshop: New Directions for Developing and Implementing Design Guidelines for Historic Areas." Presented at the 49th Annual National Preservation Conference, Strategies and Partnerships for a New Era, Fort Worth, Texas, October, 1995.

Cassity, Pratt. "Design Review: Using the Model Process for Visual Survey" and "Building a Defensible Record." Presented at the Statewide Historic Preservation Conference, Lexington, Kentucky, September 1995.

Cassity, Pratt. "Community Visioning and Small Town Design" and "Your Town After the Flood." Presented at the Southeast Preservation Conference, Birmingham, Alabama, August 1995.

Dawson, Kerry J. "Ecotourism and Sustainable Development in Irian Jaya." Presented to the 32nd International Federation of Landscape Architect's World Congress, Bangkok, Thailand, October 23, 1995.

Ferguson, Bruce K. "Stormwater Infiltration," (featured paper). Presented at the Annual Conference of Council of Educators in Landscape Architecture, Ames, Iowa, 1995.

Firth, Ian. "Balancing Nature and Culture, Preserving Historic Landscapes." Presented at the 49th National Preservation Conference, Fort Worth, Texas, 1995.

Mann, William. "John Stevens (1749-1838), Pioneer in Steam-Powered Navigation, and his Pleasure Park, 'Elysian Fields,' in Hoboken, New Jersey." Presented at the Council of Educators in Landscape Architecture Annual Meeting, Iowa State University, Ames, Iowa, 1995.

Ndubisi, Forster. "Six Paradigms of Ecological Planning and Design: An Overview." Presented at the American Collegiate Schools of Planning Annual Meeting, Detroit, Michigan, October 11-19, 1995.

Nichols, David B. "The Effects of Maintenance Levels on the Appearance of Open Celled Pavers." Presented at the Council of Educators in Landscape Architecture Annual Conference, Iowa State University, September 10, 1995.

Reinberger, Mark with Kathryn Franks. "Happy Valley, Tennessee and Enka, North Carolina: Model Industrial Communities in the Upland South," Presented at the Sixth National Conference on American Planning History, Knoxville, Tennessee, 1995.

Stovall, Allen. "Tourism and Heritage Management - The Sautee and Nacoochee Valleys of Northeast Georgia," Annual Meeting of Tennessee Chapter ASLA, Gatlinburg, Tennessee, May 4, 1996.

### OTHER PRESENTATIONS (EXHIBITS, PERFORMANCES AND WORKSHOPS)

Alvarez, Leo. "The Design Process: An Introduction." Invited lecture delivered at Your Town After the Flood, Americus, Georgia. Workshop produced by the UGA School of Environmental Design and sponsored by the National Endowment for the Arts and the National Trust for Historic Preservation. July 14, 1995.

Athens, Lucia. "Sustainable Projects and Practice." Presented at Seminar in Landscape Design, Planning and Management, University of Georgia School of Environmental Design. October 25, 1995.

Athens, Lucia. "The Domestic Life of the Soul." Presented to the University of Georgia Studies Abroad Group, Cortona, Italy, July 20, 1995.

Cassity, Pratt. Facilitator: Community-based Design Guidelines Workshop in Lawrence, Kansas (June 1995).

Cassity, Pratt. Presentations relating to local historic preservation ordinances, preservation commissions, preservation planning, and design guidelines have been given in the following cities or counties in Georgia: (Albany, Americus, Ashburn, Athens, Atlanta, Augusta, Avondale Estates, Blue Ridge, Brunswick, Carrollton, Cartersville, Cave

Spring, Clarksville, Cobb County, Columbus, Conyers, Crabapple, Dalton, Darien, Decatur, Demorest, Douglas, Douglasville, Elberton, Fitzgerald, Fort Gaines, Fort Oglethorpe, Fort Valley, Gainesville, Glynn County, Guyton, Gwinnett County, Hahira, Hartwell, Heard County, Jackson/Butts County, Jefferson, Lexington, Lincoln/Lincoln County, Ludowici, Macon/Bibb County, Madison, Marshallville, McDuffie County, Milledgeville, Monroe, Montezuma, Monticello, Newnan, Parrott, Pike County, Richmond County, Rome, Saint Marys, Savannah, Senoia, Thomaston, Thomasville, Tifton, Valdosta, Washington, Waycross, West Point, Winder, Zebulon/Pike County.

Cassity, Pratt. "Preservation: Why it Pays to Protect," "Preserve and Protect Your Resources: Making the Right Decisions for Residents, Resources, and Tourists." Presented to Iowa Heritage Tourism Institute, Keosauqua, Iowa, July 1995.

Cassity, Pratt. "The Ten Commandments of Local Preservation." Presented at the Georgia Historic Preservation Commission Training, Athens, Georgia, July 1995. Conference Coordinator and Session Leader.

Coyle, Gregg. "Measuring Graphic Performance." Presented at the Southeastern Design Communication Workshop, Clemson University, Clemson, South Carolina, 1995.

Dawson, Kerry J. "Elements of American Education." Talk given in the Department of Architecture and Landscape Architecture, University of Hong Kong, October 18, 1995.

Ferguson, Bruce. Moderator Paper Session: "Environmental Relationships Stormwater Management" Annual Conference of Council of Educators in Landscape Architecture, Ames, Iowa, 1995

Firth, Ian. "Rhythms, Tempos and Age Structure in Historic Landscapes." Presented at Balancing Nature and Culture in Historic Landscapes, A Celebration of Biltmore's Centennial, Asheville, N.C., 1995.

Mann, William. Collaborated with the late sculptor, William J. Thompson (d. 1995,) on a three-person invited competition for the commission to execute a seven-foot cast bronze sculpted figure of Governor Ellis Arnall to be placed on the grounds of the Georgia State Capitol in Atlanta.

Ndubisi, Forster. "A Cultural Village for Sapelo Island." Presented to the Hog Hammock Cultural and Revitalization Society, Sapelo Island, August 1995.

Nichols, David. "Integration of Technical and Design Requirements." Presented at the Georgia Chapter of the American Society of Landscape Architects, Landscape Architecture Registration Exam Intensive Review Session, Section 5. November 4, 1995.

Reinberger, Mark. "Woodford, Findings from Recent Research." Presented at the Naomi Wood Trust, Philadelphia, PA, 1995.

Reinberger, Mark. "Robert Wellford and the American Manufactory of Composition Ornament." Presented to the Philadelphia Athenaeum, 1995.

Weinberg, Scott. Conducted Workshop "Landcadd Computer Technology for Recreation and Park Planners," American Society of Landscape Architects, Athens, GA. June 1995.

Weinberg, Scott. Conducted Workshop "Landcadd Technology for Landscape Architects." Eagle Point Software, Athens, GA. August 1995.

Weinberg, Scott. Conducted Workshop "LandTech: Computer Applications for Landscape Architects," American Society of Landscape Architecture, Cleveland, OH. October, 1995.

Weinberg, Scott. "Landcadd; Computer Aided Design Technology for the Green Industry." Presented at the Professional Horticulture Conference of Virginia, Ltd. Virginia Beach, VA. January 1996.

Westmacott, Richard. "African American Gardens: Survival and Innovation." Presented at the Institute for Southern Studies, University of South Carolina. June 7, 1995.

### FACULTY RESEARCH PROJECTS

Mary Ann Akers received a grant from the Joyce Foundation to conduct "An Evaluation of Flexible Manufacturing Networks."

Mary Ann Akers received a U.S. Economic Development Administration Research Grant from the National Congress for Community Economic Development to study "The Industrial District Model in Italy: Its

## Application to Microenterprises in the United States."

Claudia Levy received a 1996 Faculty Research Grant from the UGA Research Foundation to study Sweden's Malmo Eastern Cemetery designed by Sigurd Lewerentz.

Bill Mann received an Instructional Improvement Grant from the UGA Office of Instructional Development to assemble teaching materials for a course on the History of Environmental Design and Garden Design in Non-Western Cultures.

Richard Westmacott is conducting a study of cultural, scenic, agricultural, and tourism aspects of the Appalachian Scenic Parkway for a grant managed by the College of Family and Consumer Sciences.

**M L A T H E S E S****S U M M E R 1 9 9 5**

Erin Degutis  
Options for Cultural Landscape Management: Craggy Gardens, Blue Ridge Parkway, North Carolina

Stephanie Gibbs  
An Exploration Into the Concept of Neighborhood: Its Application To The Community Design Process in Atlanta's West End Neighborhood

Brian Morris  
The Historic Landscape, Stuart's Hill Tract, Manassass National Battlefield Park

Ron Sawhill  
The Potential Use of Biosolids In Wetland Creation

Ying Wang  
Reification of Main Street USA as Shown in Design of a Downtown District in Augusta, Georgia

**F A L L 1 9 9 5**

Joe Lazorchak  
An Environmentally Sound Landscape Design for NESPAL, Tifton, Georgia

Alan Spell  
Ecological Significance of and Potential Impact on the Landscapes of Mt. Atago, Oshima, Japan

Alex Archer  
An Ecological Approach to the Design of Gardens at Lodges and Camps in the Masai Mara

**W I N T E R 1 9 9 6**

John Harper  
Subverting Expectations of Order in the Landscape: Ten Experiments in Designing with Disorder

Brad Nestor  
Paradise Rediscovered: An Archival Restoration of the Horticultural and Design Elements of Barnsley Gardens, Georgia

**S P R I N G 1 9 9 6**

Tres Fromme  
Post Natural: Power Cuts and Para(site)s

Cliff Gawron  
A Landscape Restoration Plan for an Indian Mound Cottage: Jekyll Island Historic District, Jekyll Island, Georgia

Andrea Gregor  
Considering Women in the Design of Urban Open Space: Georgia Plaza Park as a Model Site

Jimmy Lynn Harrison  
Outdoor Spaces for Individuals with Alzheimer's Diseases

Barry Jeffries  
The Contextual Design of an Arboretum at the Georgia Mountain Branch Experiment Station, Blairsville, Georgia

Kris Larson  
Wicked Problems and the Dialectical Imagination: Variations on the Theme of Sustainability and the Urban Park

Heyward Townsend  
Habitat Simulation for the Okefenokee Swamp Exhibit at Zoo Atlanta with Emphasis on the Black Bear

**M H P T H E S E S****S U M M E R 1 9 9 5**

Laurel Davis  
Effective Fundraising for Small House Museums

Wendy Price  
Protecting the Rural Landscape: A Compilation of State Enabling Legislation for Rural Preservation and Open Space Conservation

**F A L L 1 9 9 5**

Sherry J. Anderson  
Pre-1955 Tourist Attractions in Florida: A Developmental History and Analysis of Significance

James Horton  
The Fast-Food Restaurant and the Historic District: Respecting Community Identity

**W I N T E R 1 9 9 6**

Cari Goetcheus  
Viewshed Protection Options for County and Regional Agencies

**S P R I N G 1 9 9 6**

Gail Baldwin  
Apalachee, Georgia: Preservation of Historic Resources in the Unincorporated Community

Kevin McAuliff  
Accommodating New Eucharistic Liturgies in Traditional Churches: the Intersection of Theology and Architecture

Jane Tarlov  
Contemplating Our Navel: A Study of Historic Preservation Higher Education and the Needs of the Profession

**B L A T E R M I N A L  
P R O J E C T S****S U M M E R 1 9 9 5**

Scott Anderson  
Epps Bridge Development: Oconee County, Georgia

Gus Bishop  
Campbell Residence

Geoff Boyd  
Satellite Campus: University of Georgia

Christian F. Clark  
University of Georgia Stormwater Study Area

Krista M. Coleman  
Clarke Middle School: Entrance Courtyard Improvement Plans

Bradford Robert Davis  
The Bayou Villas: Kelly Plantation, Destin, Florida

Bryan Hall Day  
Lake Carlton: Recreation and Outreach Center

Robert G. Estes  
Big Red Oak Plantation: Hunting Reserve, Gay, Georgia

Shaun Foley  
St. Thomas Catholic Church Site Plan

Marjorie Hicks  
Line Creek Nature Preserve

Chris Higdon  
The Georgia Factory on the Oconee: An Artist's Community, Athens, Georgia

Kristin M. Kronlein  
Chechobee Village: A Retirement Community and Nursing Home Facility on the Walter F. George Lake, Fort Gaines, Georgia

Myles Montgomery  
Gold Creek Convention Center

Roland W. Ohme  
A Bicycle Loop on the University of Georgia Campus

J. Adam Ragsdale  
Round Top Mountain Corporate Resort Complex, Pineville, Kentucky

Evan M. Rogers  
Shaded Oaks: Apartment Community, South Millledge Avenue, Athens, Georgia

Chad J. Swenson  
Sautee-Nacoochee Valley Community Association

James P. Tate  
The Town of Highlands, State of North Carolina

Carol Wintzinger  
Beaverdam Creek Golf Course and Community, Cleveland, North Carolina

Susan Wright  
University City United Methodist Church: Family Life Center and Parochial School

**F A L L 1 9 9 5**

Katie M. Blankenstein  
Downtown East Athens, Georgia: Athens Downtown Development Authority & Classic Center Authority

Paul Eisen  
Triple Crown Site Plan

Colin Michael McAllister  
Cedar Point: Knowles Residence, Southport, North Carolina

Aaron Price  
Oconee Station: Urban Housing Prototype for Downtown Athens, Georgia

Christopher M. Rotalsky  
The Julian Residence, Livingston, Tennessee

Matt Schumacher  
The How's and Why's of a Golf Course

**W I N T E R 1 9 9 6**

Martha Boulware  
State Botanical Garden of Georgia at the University of Georgia: Waterfall and Rhododendron Garden

Jeff Charlton  
Hatcher Place: Redesigning the Farm

Nancy Conrad  
Plan for the Environmental Revitalization for the Commercial District for Cleveland, Georgia

Shane Q. Griffin  
Stiles Residence

Joshua H. Koons  
Brown's Mount

John R. Longo  
Bay Park Revitalization Plan in the Town of East Rockaway, New York

# Research News

Achim Muller  
Mega Cruise Ship Pier: Site Development Concept Plan, Willemstad,  
Curacao, Netherlands Antilles

R. Michael Mullis  
Moon Valley: Lodging, Dining and Trout Fishing

James Andrew Rymph  
Leap Frog Technologies Corporate Office Park Expansion

Clint Tucker  
Falls at Lenox: DeKalb County, Georgia

Greg Whitfield  
Multi-modal Station: Foundry Street, Athens, Georgia

**SPRING 1996**

Jody Beane  
Golf Course Design

Rebecca Carter  
Campus Courtyard

Alyssa Cunningham  
Environmental Learning Area

Brian Ellison  
Living Classroom

Jenny Horne  
City Outdoor Recreation Area

Charles Howell  
Savannah Outdoor Recreation Area

Dave Maida  
Nix Residence

Dan Mason  
Golf Course Design

Myers Mast  
Emmanuel College Student Housing

Tim McIntosh  
Taylor Memorial Park

Lynn McLendon  
Outdoor Recreation Complex

Todd Miller  
Leap Frog Tech, Corporate Campus

Valerie Mosley  
Recreation Area Redesign

Rob Parker  
Golf Course

Tony Powell  
Recreation Design

Janet Reid  
Botanical Garden Children's Area

Doug South  
Athens Residential Development

Chris Threadgill  
Residential Design

Suzanne Vernon  
Elementary School

## FACULTY DIRECTED CREATIVE AND SERVICE PROJECTS

■ Catherine Howett is advising the restoration of Barnsley Gardens in Adairsville, Georgia. Professor Howett is a leading authority on Andrew Jackson Downing, the landscape artist whose designs inspired Barnsley, and she has long been a supporter of the rescue of Barnsley Gardens. "Our hope is to recapture the atmosphere of a mid-19th century, Downingsque garden in rural Georgia," says Professor Howett. The thesis of alumnus Brad Nestor (MLA '96) provided information on plants used by Godfrey Barnsley.

■ The Camanche Lake Whole Access Project, with Kerry Dawson as the lead designer, was among the projects recently selected by the National Endowment for the Arts (NEA) and the National Building Museum (NBM) as part of a program to recognize excellence in universal design. The designs now become part of an architecture, landscape architecture, industrial design, interior design and graphic design educational exhibit and learning packet on creative approaches to whole access. Located in the foothills of California's Sierra Mountains near Lodi, the project involved the development and improvement of whole access to multiple facilities around the lake. Dean Dawson completed the project as a principal with CoDesign, Inc. in Davis, California.

■ Ian Firth is consulting on the Cultural Landscape Report for Melrose, an antebellum estate that

is part of the Natchez National Historical Park in Mississippi. The National Park Service is sponsoring the project, and Professor Firth has worked with alumni Suzanne Turner (MLA '78) of Louisiana State University, Barbara Bloom Fisher (MLA '78) and Maureen O'Brien (MLA '80) of Robinson Fisher Associates, Inc., and Don Staley (MLA '94), now with Texas Tech University, on the report. Ann Beha Associates, Inc. is the lead consulting firm on the project.

■ Ian Firth is also consulting on the Historic Structures Report for the Old Governor's Mansion in Milledgeville, Georgia. MLA student Judith Earley is assisting Professor Firth with the report, and Surber Barber Architects of Atlanta is the lead firm on this project for the Board of Regents of the University System of Georgia.

■ River Care 2000 is a program created by Governor Zell Miller and administered by the Georgia Department of Natural Resources to improve our knowledge and management of the state's rivers. Faculty members Kerry Dawson and Pratt Cassity are committee members for River Care 2000 and are presently involved in the state inventory of river resources. During the next three years, River Care 2000 will assess important river resources throughout the state, identify more effective management tools for river corridors, and recommend protection and land acquisition criteria for the program.

■ Mary Ann Akers is working on a Microenterprise Program for Athens-Clarke County. The project is funded by a grant from the Athens-Clarke County Human and Economic Development Department.

■ Leo Alvarez and Cheryl Mihalko received a grant from the UGA Office of Instructional Development to conduct the SED Visualization and Communication Interface. This project will integrate state-of-the-art visualization and communication modules into existing courses.

■ Leo Alvarez received a grant from the Savannah River Ecology Laboratory to assess natural and cultural features of the 68-acre site for the laboratory's Conference Center. As part of the project, Leo also integrated ecological principles into the master plan and interpretive exhibits for the site.

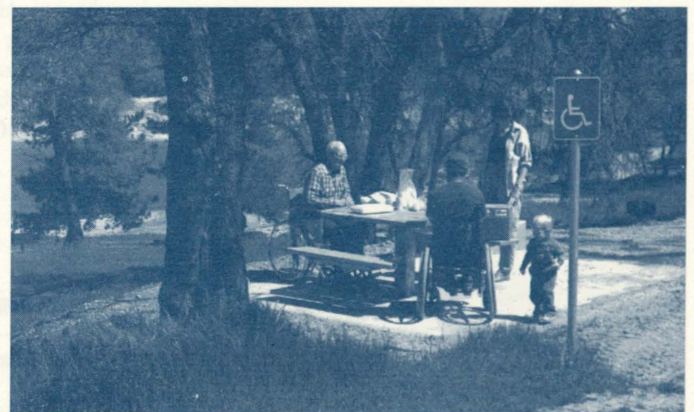
■ Pratt Cassity and Lisa Vogel conducted the second Your Town: Designing Its Future workshop, funded by a grant from the National Trust for Historic Preservation.

■ Pratt Cassity and Lisa Vogel conducted a research and service project for the National Alliance of Preservation Commissions to develop a Preservation Commission Advocacy Network. The project was funded by the National Conference of State Historic Preservation Officers.

■ Lisa Vogel and Pratt Cassity organized the Historic

Preservation Short Course for Preservation and Planning Commissions, held in conjunction with the National Preservation Conference in Fort Worth, Texas. The project was carried out for the National Alliance of Preservation Commissions and sponsored by the National Park Service.

■ Richard Westmacott's traveling exhibit entitled African American Gardens and Yards in the Rural South was recently extended by a grant from the John S. and James L. Knight Foundation to the Southern Arts Federation's Folk Art Program.



The Camanche Lake Whole Access Project was recently selected as an innovative project in Universal Design by the National Endowment for the Arts and the National Building Museum.

## Design Studio Education

### AN INTERACTIVE COMPUTER/VIDEO TUTORIAL FOR DESIGN STUDIO EDUCATION

WILLIAM RAMSEY AND TAMELA FIELDS

There is need for change in the traditional teaching methods of design education, especially in the design studio. In this time of increasing enrollments and shrinking resources, design schools face the dilemma of teaching more students with fewer faculty without losing the effectiveness of a system that must take advantage of the benefits of experience.

One answer lies in simulating studio events on interactive computer videos so that students may gain problem-solving experience at the effective levels that studios traditionally provide, but with higher student/teacher ratios than those recommended as optimum. Research has shown that a combination of computers and videos is an effective tool that exploits two activities to improve learning. First, students learn more deeply when they must respond to the learning exercise. Second, students retain more of what they learn when receiving instant feedback,<sup>1</sup> which is exactly what occurs in a desk crit. Thus, by merging past experience with present technology, the teaching capacity of the traditional studio setting can be expanded to meet modern needs.

Funding from the School of Environmental Design, the UGA Office of Instructional Development and the Office of the Vice President for Academic Affairs has provided the opportunity to see if what we wanted to do could actually be done.

We began work in the Winter of 1994 to create the prototype for an interactive computer/ video tutorial for design studio education. The goal of our current project is to continue condensing theory and application drills from design studios and their prerequisite and supplementary courses into an operating tutorial. Reaching this goal requires satisfactorily completing two revised objectives.

Objective one is to document theory and teaching techniques by videotaping design studios and their prerequisite and supplementary courses. Excerpts of cardinal points from all three types of courses will be edited into tutorial videos. Computer-generated designs, class note replication, audio, computer animation, and slide shows are also utilized in the tutorial.

The second objective is to convert these knowledge bases into a computer interactive

format. Through programmed instruction, the tutorial will prompt students by response and feedback to access the knowledge base for significant information that expands upon cardinal points of the exercises being demonstrated. In this way, the tutorial will act as a teaching resource, stimulating thought processes involved in design much the same way a professor does during design crits, but without the professor.

Since students learn at different rates and in different ways,<sup>2</sup> this tutorial will allow them to absorb the instructional program of an entire term at their own pace and encounter design in visual, verbal and mathematical languages to accommodate their own most effective learning style. This will allow professors to concentrate on desk crits.

Accomplishing both objectives will take approximately three to five years. However, a prototype is presently being refined. After the initial format for the tutorial is resolved, it will simply be a matter of documenting the required courses and incorporating them into the tutorial. Presently, the task is to create the best possible model upon which to build.

Products of this instructional development effort can immediately affect four sections of two design studios and the two or three prerequisite and supplementary courses that influence them. As many as eight professors and their classes at the SED can benefit, probably within a year. That affects about 900 studio students, assuming that studios could then be effectively taught with as many as 22 students per class. In addition, about 900 in prerequisite and another 900 in supplementary classes means that approximately 2,800 per year can be affected by this improved teaching method.

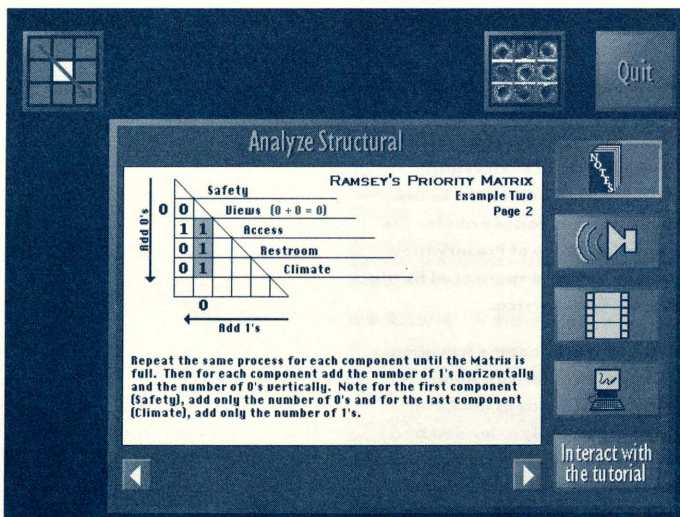
Once implemented here, the tutorial can be offered to other design schools in the U.S. and abroad. The project has received enthusiastic response from individuals within the design and education fields as well as those unassociated with these areas. Currently, there are plans with Professor Roger Martin, the former head of the Department of Landscape Architecture at the University of Minnesota, to share footage of problem solving exercises conducted at their design school. He further shared his belief that this product would be in demand once it enters the education commercial market. Richard Westmacott, a Professor at the School of Environmental Design, has found that by taping his engineering course we could combine four classes into two or possibly even one. This solution would free up as many as three professors to teach other courses.

We hope to further encourage other educators, schools, and disciplines to become involved and provide a network of ideas and classroom documentation to improve this tutorial as it evolves. We welcome any questions, comments, and suggestions readers may provide. We can be reached at 706-542-4717 or at 609 Caldwell Hall, Athens, GA 30602-1845.

<sup>1</sup> Rodriguez, J., 1984, Video: A Medium for a New Age in Landscape Design and Education, CELA Proceedings, Pg. 80.

<sup>2</sup> Nicholls, P.P., 1984, Computers for Teaching Graphics, CELA Proceedings, Pg. 52.

Screens from the tutorial recreate the studio and guide students through the design process.



© 1994 WILLIAM RAMSEY AND TAMELA FIELDS



© 1994 WILLIAM RAMSEY AND TAMELA FIELDS

## Service News

# Landscape Architectural Registration

## CONTINUING EDUCATION REQUIREMENTS IN THE SOUTHEAST

MIKE BREEDLOVE

Like it or not, continuing education is here. Some curse the requirement, while others welcome the opportunity. Those in private practice realize the need for continuing education, but have a difficult time justifying the loss of productive time and the costs associated with some continuing education programs. Those in public practice now have a vehicle to secure time and funds from their jurisdiction for continuing education.

From the results of attendance at a Landscape Planning Short Course organized by the SED, demand for continuing education is great. Critics need to understand that the requirement does more than create a headache for them. In Georgia, the requirement was the result of a change in state law and was directly attributable to sunset review comments by state auditors. The Georgia continuing education requirement is minimal; however, it reinforces the professional motivation for continued improvement to protect the public health, safety and welfare.

In Georgia, continuing education consists of six contact hours per year (twelve contact hours per bi-annual renewal). The definition of continuing education is broad enough to include any seminar, class, correspondence course, etc. which would benefit the registered landscape architect in any manner of activity. This could include computer courses, spreadsheet courses, word processing, accounting, plants, maintenance, storm water management, erosion control, and many other topics. The state simply requests written documentation of your contact hours, should you be audited. Current continuing education requirements for states in the southeast (CLARB Region III) are as follows:

### ALABAMA

Continuing education was adopted beginning October 1, 1993. Alabama requires that fifteen "professional development hours" (PDH) be obtained per year. A PDH is defined as a contact (clock) hour consisting of not less than fifty minutes of instruction or presentation. For more information, contact Joann Brock at the Alabama Board of Examiners of Landscape Architects (334-262-7768).

### FLORIDA

Currently there are no continuing education requirements. For more information, contact the Florida Board of Landscape Architecture (904-488-6685).

### GEORGIA

Georgia requires six contact hours of continuing education per year (twelve contact hours per bi-annual renewal).

Credit accrues at a rate of one hour for each hour of actual contact. This shall be known as a contact hour or clock hour. Three hours of tour or field session activities are required to equal one contact hour. For more information, contact Barbara Kitchens at the Georgia State Board of Landscape Architects (404-656-2281).

### LOUISIANA

Currently there are no continuing education requirements. For more information, contact Craig Roussel at the Louisiana Horticulture Commission (504-925-7772).

### MISSISSIPPI

Currently there are no continuing education requirements. The Mississippi state law does provide for rule-making authority when the Committee adopts a format. This is currently under discussion. For more information, contact Karen Owen at the Mississippi State Board of Architecture (612-296-2388).

### NORTH CAROLINA

North Carolina requires twenty contact hours of continuing education be obtained for the previous two years. A contact hour is defined as not less than 55 minutes. For more information, contact Robert Upton at the North Carolina Board of Landscape Architects (919-850-9088).

### SOUTH CAROLINA

Currently there are no continuing education requirements. For more information, contact Tonya Landrith at the South Carolina Board of Registration for Landscape Architects (803-734-9131).

### TENNESSEE

Currently there are no continuing education requirements; however, the Board is currently discussing this matter. For more information, contact Candace Toler at the State Board of Architect and Engineer Examiners (615-741-3221).

### TEXAS

Currently there are no continuing education requirements; however, they are in the process of implementing continuing education. For more information, contact Cathy Hendricks or Carolyn Lewis at the Texas Board of Architectural Examiners (512-305-9000).

### REMINDER: LANDSCAPE ARCHITECTURE REGISTRATION EXAM

Practitioners with a 5-year degree and the necessary experience may sit for the Georgia Landscape Architecture Registration Exam (LARE), which will be administered December 2 - 3, 1996, at the offices of the State Examining Boards, 166 Pryor Street, in Atlanta. The application deadline for the exam is September 15, 1996. Contact the Georgia Board of Landscape Architects at 404-656-2281 for more information or to receive an application.

## CONTINUING EDUCATION OFFERED BY THE SED

LISA VOGEL AND NEAL WEATHERLY

■ SED faculty members Neal Weatherly and Cheryl Mihalko initiated a new continuing education course in 1996. The Landscape Planning Short Course for Nursery Personnel was held on campus in February and attracted over 200 participants. The 1997 short course is now in the planning stages. It will be held at the Georgia Center for Continuing Education on February 4-5, 1997. Call Neal Weatherly at 706-542-0943 for more information.

■ The SED's Alumni Weekend '96 offered participants 4 continuing education contact hours, and many of the 150 attendees took advantage of the credits.

■ The annual Landscape Architecture Registration Exam (LARE) Review was held April 25-27, 1996, at Flinchum's Phoenix, at UGA. Neal Weatherly, with help from graduate assistant Jim Connelley, coordinated and led the annual review. Other SED faculty members who taught the

review were Bruce Ferguson, David Nichols, Bill Mann, Bill Beery, and Neal. SED alumni who conducted sections of the review included Nancy Beckemeyer (BLA '77), Laura Byington (BLA '82) and Ken Beall (BLA '82).

■ The SED's Office of Preservation Services conducts annual Historic Preservation Commission Training at the Georgia Center for Continuing Education. SED faculty members Pratt Cassity, James Reap and John Waters, along with preservation professionals from across the state, lead sections of the workshop. Normally offered in July, the 1996 workshop has been postponed until the Fall, due to Olympics schedules. Call the OPS at 706-542-4705 for more information.

■ In 1994, SED faculty initiated an in-depth review course for two specific sections of the LARE: "Grading and Drainage" and "Construction Details." Neal Weatherly coordinated the course and is planning to offer it again in November 1997. Call Neal at 706-542-0943 for more information.

## Certified Local Governments and UGA's SED

PRATT CASSITY

The SED's Office of Preservation Services (OPS) has played a key role in the publication of a new National Park Service booklet outlining how local governments across the country benefit from the national Certified Local Government (CLG) program. Each state encourages and aids local government participation in federal preservation programs through the means of the CLG program. A community must pass a local preservation ordinance and establish a preservation review commission to become a CLG. The program started in 1984 and has enjoyed a very successful track record.

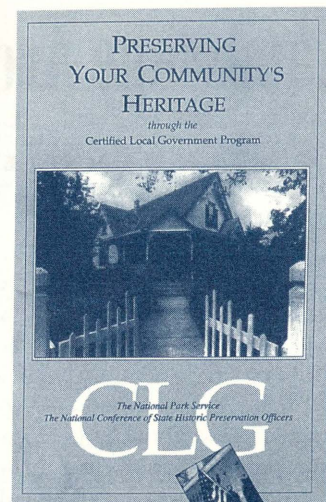
In Georgia, the Historic Preservation Division of the Department of Natural Resources works with the OPS to provide services related to local commissions and to coordinate the CLG program. The Office provides

assistance in several ways and has established a national reputation of working with local commissions and organizations. Currently there are 2,025 local commissions in the United States and 1,010 of them participate in the CLG Program. (In Georgia the participation rate is a little bit higher—47 of the 76 commissions are CLGs.) The booklet has received praise from all national organizations and plans are being made to reprint it because the supply was exhausted in the first few months. A limited supply is currently available through the OPS.

The Georgia CLG Program enjoyed an additional honor this year when the City of Stone Mountain was designated as the nation's 1,000th certified local government. As National Park Service Director Roger Kennedy said,

"With the exception of relatively few national landmarks, historic resources are saved primarily through local interest and local initiative. The Certified Local Government Program is designed to link the enthusiasm and passionate concern of local historic preservation advocates with the technical skills and expertise of preservation professionals working at the Federal and State government level," wrote Kennedy. "By becoming the 1,000th participating locality, Stone Mountain provides a testament to the success of this unique partnership between the Federal, State, and local levels of government."

Through the CLG program, the Department of Natural Resources, the University of Georgia and our state's terrific local governments are assuring that cultural resources are protect-



ed and that new design and development is carefully planned to include valuable and tangible pieces of the past. If you would like more information on the work of the OPS, or if you would like more details of how local governments can participate in the CLG Program, please contact the OPS at 706-542-4731 and speak with Pratt Cassity or Lisa Vogel.

## The National Alliance of Preservation Commissions

LISA VOGEL

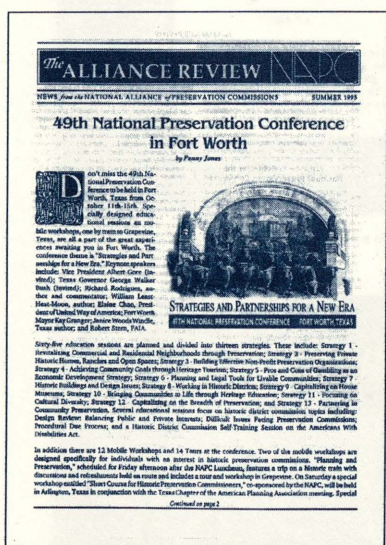
Historic preservation actually occurs at the local level: local preservation commissions make the tough decisions that protect historic properties from the pressures of development. The National Alliance (NAPC), a nationwide network of historic preservation commissions, exists to provide guidance and assistance. To assist the efforts of the NAPC, the Office of Preservation Services provides staffing services and project management for the organization.

The Alliance is governed by a board of 20 directors from around the U.S., who have been successful in securing a number of grants to carry out projects that aid the work of local commissions. These grants are then sub-granted to the Office of Preservation Services (OPS):

- two grants from the National Park Service and the National Trust for Historic Preservation to carry out the United States Preservation Commission Identification Project;
- two grants (1994 and 1996) from the National Park Service to plan a biennial forum for coordinators of the nationwide Certified Local Government program;
- a grant from the Department of Justice to conduct a survey of historic preservation commissions regarding their experiences with the Americans with Disabilities Act (ADA) and assist development of an ADA training kit;
- two grants (1995 and 1996) from the National Conference of State Historic Preservation Officers to establish a network and database of local commissions concerned about political advocacy issues;

- a grant from the California Office of Historic Preservation to direct a commission training workshop;
- a grant from the National Park Service to develop the Historic Preservation and Planning Short Course, a workshop for personnel from preservation and planning commissions.

In addition to these grant projects, the OPS staff also manages the regular activities of the NAPC. Pratt Cassity, NAPC Executive Director, assists other states in organizing their local commissions and speaks about commission issues on behalf of the NAPC at conferences and other events throughout the U.S. Connie Malone manages the NAPC membership of more than 650 individuals and organizations and edits the NAPC's quarterly newsletter, *The Alliance Review*. Lisa Vogel organizes the NAPC's educational sessions and events for the yearly National Preservation Conference; organizes and assists board activities; and manages NAPC grant projects. The NAPC has funded a number of graduate assistantships over the past six years, and many of the activities are carried out by those assistants: MHP student Jeff Squier currently manages the U.S. Preservation Commission database, and MHP students Laura Strachla and Autumn Rierson provide technical assistance on commission issues and assist NAPC grant projects.



# Development News

## Development Update

ALLEN STOVALL

### RECENT GIFTS

A February gift from Rick Pariani (BLA '77) brought the total of SED endowments to the \$1 million mark. On the same day a donation from Sandy Phillips (BLA '88) put us over the mark. Thanks to both - and good timing, Sandy!

Other good news is that in the first eleven months of FY '96 a total of \$136,129 in gifts and pledges earmarked to the SED has been received. This total includes \$86,500 in major gifts from three newly established scholarships and a gift from Mr. Charles A. Smithgall of Atlanta. Our special thanks go to these individuals and the many alumni and friends whose gifts provide support for other scholarships, lectures, student travel, and various enrichment activities throughout the year.

### NEW SCHOLARSHIPS

Since July 1, 1995, the following scholarship endowments have been established: the Randolph and Helen Marshall Scholarship, the Edah Brittain Grover Scholarship, the John Eubanks Merit Scholarship, and most recently, the John W. Linley Scholarship.

Randy Marshall graduated from UGA with a BLA degree in 1972. He also has a degree in horticulture and was a member of Gamma Sigma Delta Honor Society. A registered landscape architect, he opened his own firm - Randolph Marshall, PC, Landscape Architects and Site Planners - in 1977. His wife, Helen, is a graduate of Cornell University with a BS in Design. Working together in Katonah, NY, their projects have

taken them to a good portion of the United States and abroad. Established in full, the Marshall endowment provides for the first scholarship recipient in the fall of 1996.

Edah Brittain Grover, MLA 1978, is featured on page 10 as recipient of the 1996 SEDAA Distinguished Alumni Medal. The Edah Brittain Grover Scholarship endowment, when fully funded, will provide tuition assistance to young women who desire to pursue the BLA degree at the University of Georgia.

John Eubanks was an honor student completing his summer internship at Bridger Teton National Forest in Jackson, Wyoming, when he met an untimely death. This scholarship is being established by John's parents, Francis and Carol Eubanks of Central, South Carolina. The scholarship will assist BLA candidates having a demonstrated interest in landscape conservation and/or restoration.

The John W. Linley Scholarship endowment is being undertaken by "Friends of John Linley," represented by Mr. Bill Ducworth of Anderson, SC. In honoring our late friend and colleague, this endowment will provide scholarship assistance for students enrolled in both the Landscape Architecture and Historic Preservation Programs.

Alumni and friends wishing to donate to any of these or other SED funds should make checks payable to the UGA Foundation, designating on the check the fund of your choice (refer to page 22).

## GIFTS RECEIVED

JULY 1, 1995 - MAY 31, 1996

(gifts received during June will be reported in the next SED News)

### PRESIDENTS CLUB FOUNDING MEMBERS

Clay Adamson  
Roy Ashley  
Ringland (Rex) Bray  
Elizabeth Haygood  
Robert Hill  
James Hudson  
William McDougald  
Darrel Morrison  
Mr. and Mrs. Charles Perry III

### PRESIDENTS CLUB (\$1,000 OR ABOVE ANNUALLY)

Clay Adamson  
Kerry Dawson  
Francis M. Eubanks  
Carol W. Eubanks  
James Franklin  
Mr. and Mrs. William Franklin  
Georgia Chapter ASLA  
Edah Brittain Grover  
Hughes, Good, O'Leary & Ryan  
Robert and Dale Jaeger  
Lawrie Jordan (ERDAS)  
Nimrod Long and Associates, Inc.  
Randolph and Helen Marshall  
Bruce Rado (ERDAS)  
W. Roy Reece  
Mrs. James D. Robinson, Jr.  
Mr. and Mrs. Jonathan Seymour  
Allen Stovall  
Charles Smithgall, Jr.  
Alvis J. Waite

### GEORGIAN CLUB (\$500-\$999)

Century Supply Corporation  
Sara Devine  
Ian Firth  
Neil Hightower  
Rick Pariani and Susan Painter  
Speake Garden Furnishings  
Rain Bird Sales  
Laura Phinizy Segrest  
Time Warner, Inc.  
Mrs. Thomas L. Williams, Jr.

### CHARTER CLUB (\$250 - \$499)

Artistic Lighting  
Ben Page and Associates  
Bald Springs Nursery, Inc.  
Classic Groundcovers, Inc.  
Maudie Tripp Bradford  
Earl Carter  
Harry T. Clements Jr.  
Rachel Conway  
Jon Davis  
Dr. and Mrs. Michael Dirr  
Daniel Berry Franklin  
Alan Harris/Lifescapes, Inc.  
Harry Housen  
Randall Lantz  
Clay Mooney/Design Associates  
Mother Nature  
Kenneth Boyd Simmons  
Mr. and Mrs. Lewis Vaughn  
Mr. and Mrs. Allan Youngs  
Mike Westmoreland Contracting, Inc.  
York Bridge Concepts

### CENTURY CLUB (\$100 - \$249)

Edward T. Alexander  
Mr. and Mrs. Ivan Allen, Jr.  
Mr. and Mrs. Roy Ashley  
AU Associates, Inc.  
Nancy Beckemeyer  
Armand Benedek  
Fred Blackley  
John Bowen  
Michael Browning  
Frank Burrgraf  
Jot Carpenter  
John Carpenter, Jr.  
Mr. and Mrs. Allan Chase  
Scott Chatham  
David Childers  
Richard W. Christenson  
Richard Christenson, Jr.  
Benjamin Copeland  
F. Burton Craige III  
Barrett F. Crawford  
Michael Philip Crawford  
Thomas Duggins  
Mr. and Mrs. Hylton Dupree, Jr.  
Mr. and Mrs. Edward Ellis  
Michael Ethridge  
William Freeman  
T. Christopher Furqueron  
Sidney Gattis  
Will Goodman & Associates, Inc.  
Wm. Hobbs, Ltd.  
William Hobbs  
Rebecca King  
F. Clason Kyle  
Mr. and Mrs. Thomas Lennon  
John Willis Long  
Robert E. Marvin  
McNeal Consulting, Inc.  
Mary Michael  
Mid Georgia Nursery, Inc.  
Michael Olivieri, Jr.

Patsy Eubanks Owens  
Nell Hawkes Paulk  
Mr. and Mrs. Kenneth Potter  
Florence Pulliam  
F. Truitt Rabun  
Mark Reinberger  
Dr. and Mrs. Jack D. Sherrer, Jr.  
James Sibley  
Brendan Smith  
Marion Smith II  
Harriet Ellis Swan  
Kenneth Swindle  
Eloise and John Starbuck  
John Waldrop  
Jan Vandenbulck  
Neal Weatherly, Jr.  
James Willis

### ANNUAL FUND (\$25 - \$99)

David Frank Albright  
Mary Alexander  
Matthew Anacker  
Michael Troy Ashley  
Harold Bailey  
Thomas Baur  
Robert Benson  
Nancy Bernier  
Caroline Bethea  
Mr. and Mrs. Norris Birchfield, Jr.  
Albert Bitters  
Border Concepts, Inc.  
Mr. and Mrs. Ringland Bray  
Jeanette Brown  
Mr. and Mrs. Mark Byington  
Emily Cameron  
Richard Chapple  
Joe Chastain  
Mollie Childs  
Walter James Coile  
Louis Dash, Jr.  
Carol Davis  
Raymond Davis, Jr.  
William Davis, Jr.

Carol Deady  
Reinald Dersch  
Richard Greer Dupree  
Morgan Ellington  
Kathleen Ellis  
Allen Favrot  
Calvin Gill  
Mr. and Mrs. Steven Goldberg  
Mr. and Mrs. Brad Good  
Mr. and Mrs. David Anthony Hale  
Matthew Hambrick  
Mr. and Mrs. Marc Hamburger  
Susan Harrison  
Mr. and Mrs. Kenneth Haser  
Henry Herb  
Thomas Holcomb  
James Hoover  
Carolyn Hoffman  
Robin Hubbell  
Francis Iaconetti  
Handy Johnson, Jr.  
Rosemary Johnston  
Steven Johnson  
Carolyn Tucker Jordan  
Mr. and Mrs. James Jordan III  
Coralee Kight  
Donald Kohla  
William Kelly  
Mr. and Mrs. Deborah Kent  
Ivan Scott Kirsh  
Thomas Kolias  
Priti Kolhe Alexander Levy  
Mr. and Mrs. Jerry Lewis  
Donald Longnecker  
George Lynch  
Edward Curtis Martin, Jr.  
Merritt Brothers, Inc.  
Ernest Messenger  
William Mitchell, Jr.  
Mr. and Mrs. Christopher Moder  
Darryl Kevin Moores

Kenneh Muha  
David Neale Myers  
Julie Myers  
Nationsbank  
Elizabeth Novak  
Suzanne O'Neal  
Richard Owens  
Peachtree Garden Club  
Roger Palmer  
Mr. and Mrs. Wendell Peebles  
Sandra Philips  
Mr. and Mrs. Plauth  
Mr. and Mrs. James Fridmore  
Eleanor Ridley  
Samuel Rogers  
Jean Rothrock  
Paul Lay Russesll  
Rex Schuder  
Mr. and Mrs. Shankoff  
Stacy Simon  
George Hosmer Spencer  
Col. Harry B. Stoudmire Ret.  
Mr. and Mrs. Dan Sweat  
Tim Thoms  
Wimberly Treadwell  
Suzanne Louise Turner  
Mr. and Mrs. James Ward  
Whole in One Design Group Ltd.  
George West  
Wildflowers & Wetlands  
Lisa Whitcomb  
Mr. and Mrs. Thomas G. Williams Jr.  
Morris Wood  
David Zeigler

Every effort has been made to list all gifts received. Please contact the SED to report any errors so that we may correct. Thank you.

## Neel Reid Endowment

In the last issue of SED News we erred by omitting the largest and oldest endowment supporting the School of Environmental Design. We sincerely apologize.

The Neel Reid endowment was established by the Peachtree Garden Club of Atlanta in June 1947 to provide for scholarships and other support to students enrolled in Landscape Architecture (later amended to read in the School of Environmental Design). Other amendments to the original agreement provided eligibility for travel fellowships, graduate assistantships, and research stipends specifically approved by the Neel Reid Committee of the Peachtree Garden Club. The

Neel Reid Memorial Scholarship, at \$6,000, is the largest scholarship available to students of the SED. The endowment principle has grown to a current balance of \$355,317 from which 3-5 awards totalling \$12,000 - \$15,000 are typically made each year.

Since 1963, the Fund has supported 44 travel fellowships, 26 scholarships, and 16 research awards for a total of \$199,500. To the Peachtree Garden Club, we, and especially the 86 recipients of this support, owe a special thanks!

### SED ANNUAL FUND

Yes, I support SED. Enclosed is my gift of:

..... \$1000 ..... \$500 ..... \$250 ..... \$100 ..... other

*Please make checks payable to the University of Georgia Foundation*

Name .....

Address .....

Telephone .....

Please use my gift as follows (refer to Current SED Endowments below) .....

Please send me the following information on planned giving.

- Ways of Giving
- Simple Ways to Reduce Income Taxes
- Giving Real Estates
- Giving Securities
- Giving Through Charitable Trus
- How To Make Wills That Work

#### PLEASE RETURN TO

Allen Stovall  
School of Environmental Design  
The University of Georgia  
609 Caldwell Hall  
Athens, GA 30602-1845  
706-542-4727

### CURRENT SED ENDOWMENTS

\*New funds

SEDAA Graduate Fellowship\* Environmental Design Scholarship\* HB Owens Scholarship\* Clay Adamson Scholarship\* ERDAS Scholarship for Studies in GIS\* Robert Johnson Hill Scholarship\* Daniel B. Franklin Scholarship\* Jonathan G. Seymour Program Support Fund\* Owens Resource Center Support Fund\* Vincent Lecture Fund\* Draper Chair Endowment\* Neel Reid Endowment\* Randolph and Helen Marshall Scholarship\*\* Edah Brittain Grover Scholarship\*\* John Walter Eubanks Merit Scholarship\*\* John W. Linley Scholarship\*

### SED OPERATING FUNDS

SEDAA Fund\* SED Program Enrichment Fund

**SEDAA NEW ZEALAND TOUR IS ON!!**

F E B R U A R Y 1 9 9 7

**Tour Length:** 16 Days (14 days in New Zealand)**Dates:** Depart February 14 from Los Angeles for Auckland, New Zealand. Return arrival in Los Angeles March 1. Reserved spaces with hotels and airline are confirmed for up to 40 participants.**New Zealand Host:** Frank Boffa (BLA '68), a New Zealand native with landscape architectural offices in four New Zealand cities. Frank will serve as host for the entire 14 days in New Zealand.

Special Educational Sessions to fulfill continuing education credits for Landscape Architects

**Educational Credits and Themes provided as follows:**

- Rotorua – Cultural Heritage Planning
- Wellington – Water Front Redevelopment
- Christchurch – Landscape Design
- Queenstown – Tourism Resort Lovers impacts
- West Coast – Conservation Strategies
- Auckland – Coastal Planning

**Tour Sequence(Overnight destinations-some are multiple):**North and South Islands: Auckland-Rotorua-Napier-Wellington  
Blenheim-Christchurch-Queenstown-Franz Josef-Greymouth-Christchurch

Weeks of planning have gone into the itinerary that includes major hotels, resorts and restaurants, farm and winery visits/dinners, cruise dinners, and an evening barbecue at Frank Boffa's residence in Wellington.

**Cost:**

\$3,700 based on minimum of 25 participants.

Individuals to make own travel arrangements to and from Los Angeles.

Optional add-on stops in Australia, Honolulu and/or the Fiji Islands may be arranged at additional costs.

**Included in above cost:**

Round-trip airfare between New Zealand and Los Angeles  
 All lodging (based on twin rates)  
 Breakfasts and dinners  
 All ground transportation in New Zealand (coach, train, ferry)  
 Numerous individual sight seeing activities  
 Much, much more...

**Reservation and Deposits**

\$100 written to SEDAA (specify airline reservation deposit) will guarantee the Qantas round trip rate of \$1060. Brochures will be mailed to interested/committed parties during early summer that contain the day-by-day itinerary, hotels, additional deposits and payment schedule. Meanwhile, please contact:

Allen Stovall  
 School of Environmental Design  
 609 Caldwell Hall  
 University of Georgia  
 Athens, GA 30602  
 Phone (706)542-4727  
 FAX (706)542-4485

**SED CALENDAR 1996 - 1997**

DATE	TIME	EVENT	PLACE
May 17 - September 30	8:30 a.m. - 5:00 p.m. when school is in session 9:00 a.m. - 6:00 p.m. throughout July and August	"Environmental Design for the 1996 Atlanta Olympics"	SED Gallery, UGA
September 13 September 14	6:00 - 9:00 p.m. 9:00 - 1:00 p.m.	SEDAA Fall Social SEDAA Steering Committee Meeting*	2060 Cottage Lane, Atlanta Hughes, Good, O'Leary, & Ryan, Atlanta UGA SED Gallery
Fall Quarter Fall Quarter	T.B.A. 8:30 a.m. - 5:00 p.m. Monday - Friday	Lecture: Nicholas Quennell Exhibit: Places in Time	Jekyll Island, Georgia UGA SED Gallery
November 9 Winter Quarter February 1 Winter Quarter Winter Quarter Spring Quarter	9:00 - 1:00 p.m. T.B.A. 9:00 - 1:00 p.m. T.B.A. 8:30 a.m. - 5:00 p.m. Monday - Friday	SEDAA Steering Committee Meeting* Lecture: Topher Delaney SEDAA Steering Committee Meeting* Exhibit: Susan Roberts Lecture: Susan Roberts Exhibit: So it is SED . . . '97	UGA Callaway Gardens, Georgia SED Gallery UGA SED Gallery
April 18-20 Spring Quarter	Throughout Weekend 8:30 a.m. - 5:00 p.m. Monday - Friday	Alumni Weekend Exhibit: Paul Shephard (Tentative)	SED SED Gallery
Spring Quarter	T.B.A.	Lecture: Warren Byrd	UGA

\* All interested parties are welcome to attend the quarterly meetings of the SEDAA Steering Committee.

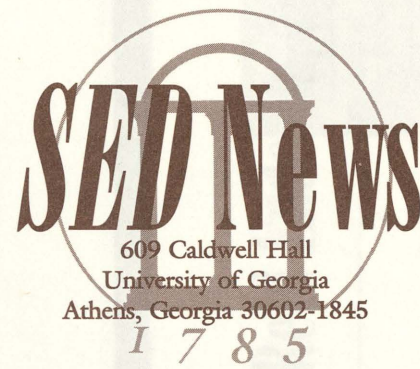
SED News is an annual publication by the School of Environmental Design and the University of Georgia.

**Editor**  
Lisa Vogel

**Editorial Assistants**  
Chanda Morgan  
Cherie Blizzard Prickett  
Laura Stroehla  
Autumn Rierson

**Graphic Designer**  
Teri Nye

Correspondence should be addressed to SED News  
609 Caldwell Hall  
School of Environmental Design  
University of Georgia  
Athens, GA 30602-1845  
706-542-4485 (FAX)  
706-542-1816 (Phone)



609 Caldwell Hall  
University of Georgia  
Athens, Georgia 30602-1845

1785

Non-profit Organization

U.S. Postage

PAID

Permit #165

Athens, GA

**SED GALLERY**

**Environmental Design for the 1996 Atlanta Olympics**

**GALLERY OPENING  
FRIDAY, MAY 17**

Reception 4:30-6:30 p.m.

**May 17 - September 30, 1996  
SED Gallery, UGA Campus**

**HOURS:**

May, June, and September,  
Mon.-Fri.  
8:30 a.m.-5:00 p.m.

July-August, Mon.-Fri.  
9:00 a.m.-6:00 p.m.

The SED Gallery can be accessed through the HB Owens Resource Center, on the ground floor of Caldwell Hall

The School of Environmental Design is hosting an exhibit featuring the work of UGA alumni who are designing the athletic venues and public spaces for the 1996 Olympic Games. The work of landscape architects and other designers will be featured. Examples of venues to be included are white water rafting, cycling, archery, canoeing, rowing, and the equestrian facilities at the new International Horse Park. Alumni offices are also responsible for Centennial Olympic Park, the Olympic Village, the Folk Art Parks, several pedestrian corridors, and the Stone Mountain Park redevelopment plan.

**Work will be included from:**

Altimara Design and Common Sense  
Bishop Planning Consultants  
EDAW, Inc.  
Robert & Co.  
The Jaeger Company  
Tunnell-Spangler Assoc.  
Robinson Fisher Assoc.

Leslie Design Assoc.  
Nimrod Long Assoc.  
Pickering Firm, Inc.  
Stone Mountain Park  
Planning and Development  
Peter Drey & Company  
ACOG