

THE
UNIVERSITY
OF GEORGIA
Fall 1995



SED News

Master of Landscape
Architecture ■ Master of
Historic Preservation ■
Bachelor of Landscape
Architecture ■ Certificate in
Historic Preservation ■
Certificate in Environmental
Ethics ■ Joint Master of
Urban Planning with Georgia
Tech ■ Joint Preservation Law
Degree ■ Joint BLA Degree
with Morris Brown College ■
Study Abroad at Cortona,
Italy, and Oxford, England ■
Exchange Agreement
Programs with Cal Poly San
Luis Obispo, Cal Poly
Pomona, University of
Canberra (Australia),
Colorado State, Florida
International, University of
Idaho, Purdue University,
Louisiana State, University of
Maryland, University of
Massachusetts, University of
Minnesota, North Carolina
State, Oklahoma State,
University of Oregon, Royal
Melbourne Institute (Australia),
University of Rostok
(Germany), Rutgers University,
Utah State, Virginia Tech,
Washington State, and
University of West Virginia

School News	2
Faculty News	6
Alumni News	8
Student News	11
Research News	14
Service News	16
Development News	19
SED Calendar	20

Countdown on the Olympics

Three years ago the School of Environmental Design was contacted by the Atlanta Committee for the Olympic Games (ACOG), the coordinating body for the 1996 Summer Olympics. Within ACOG there was interest in developing a new urban park in Atlanta to act as a gathering place during the summer games. To allay the cost fears, the SED wrote security and maintenance guidelines related to cost management. Eventually, the concept became Olympic Centennial Park and an international search for a design firm led to a short list of four firms which included three University of Georgia alums as lead designers. EDAW Atlanta won the contract, and Principal Rick Pariani (BLA '77) coordinated much of the design on Olympic Centennial Park with Office Director Barbara Faga. Of additional pride for the SED is the role that alumni play in the design of venue sites. Alumni are involved in every Olympic venue. These number in the dozens, and we ask forgiveness for anyone who has been left out of this article.

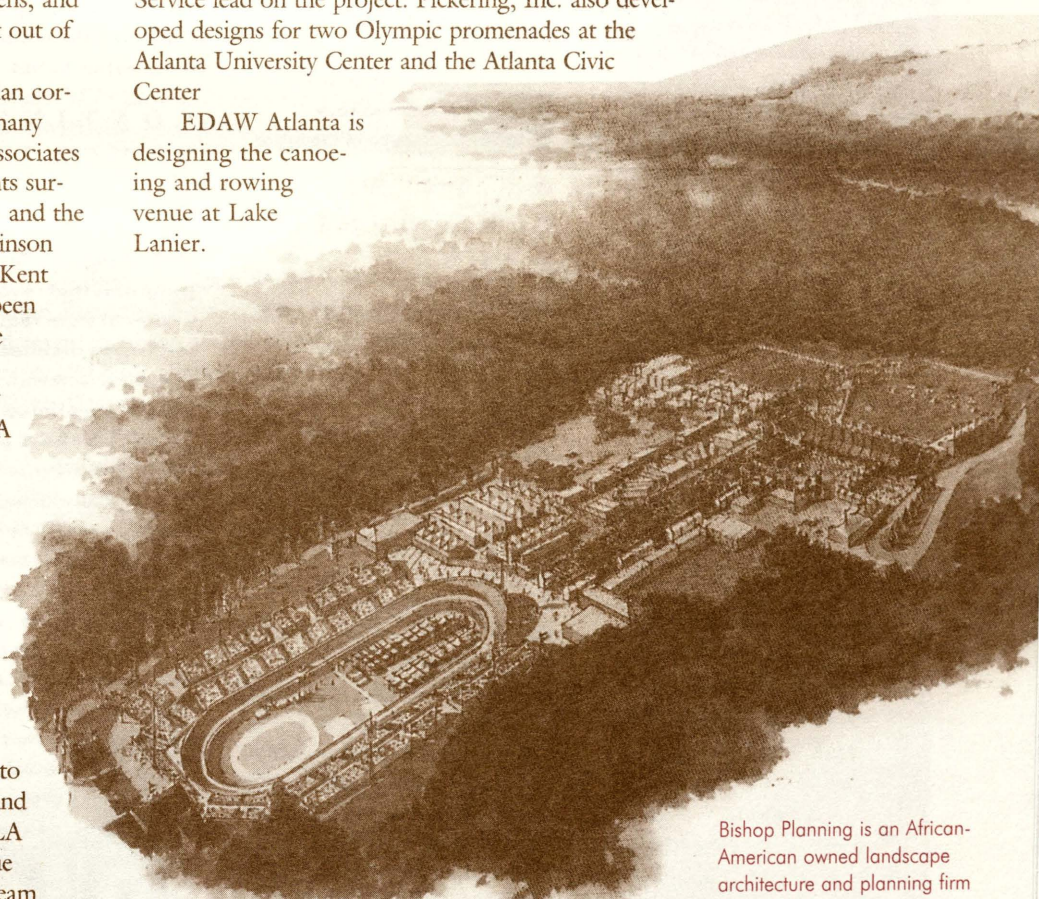
EDAW Atlanta is coordinating the pedestrian corridor improvements in downtown Atlanta but many firms are involved including Robinson Fisher Associates of Athens with the Capitol Avenue improvements surrounding the Olympic Stadium (track and field) and the Atlanta-Fulton County Stadium (baseball). Robinson Fisher, (Barbara Bloom Fisher MLA '78, Brian Kent BLA '84, and Don Staley MLA '94) have also been awarded the Art Park and Folk Art Parks on the downtown connector bridge overpasses at Piedmont and Courtland. Robert and Company (Jim Cothran MLA '68 and Robert Benson BLA '69) is involved in several projects including the Abernathy Boulevard Pedestrian Mall from the west end MARTA Station to the Olympic Stadium. We described the role of Nimrod Long (MLA '78) Associates and seven other alums in their Birmingham and Atlanta offices toward revitalizing Peachtree Street for the Olympics in our last newsletter. Additionally, Dale Jaeger (MLA '82) Associates is working on several Olympic streetscape projects and just finished work on the Freedom Parkway leading to the Martin Luther King National Historic Site and the Carter Presidential Library. Roy Ashley (BLA '64) and Associates worked on the North Avenue Pedestrian Corridor and also joined the design team for shooting at Wolf Creek (Jay Scott BLA '75, Martin Haber BLA '78, Brett Wylie BLA '92, Cliff Bussey BLA '88, Mike Ashley BLA '92 and Jim Tuminella BLA '77). Roy Ashley Associates are also involved in "Quiltscape," a community-outreach program that will enlist individuals, organizations and businesses in privately funded landscape improvements. They are also the landscape architects on the "Look of the Games" team which oversees graphics, design style, and venue coordination.

The Georgia Institute of Technology campus is the site of the Olympic Village, Aquatic Center (diving, swimming, etc.) and Alexander Memorial Coliseum (boxing). Overseeing much of this work is Georgia Tech Landscape Design Chief Jerry Connor (BLA '78). EDAW is designing the festive area which is the central plaza of the village at Georgia Tech where dormitory areas are under remodel for housing athletes. Among the firms working on these plans is Leslie Design Associates (Janneke Leslie BLA '79). Bishop Planning (Robert Aiken BLA '69, Kweisi DeGraft-Hanson MLA '90, Mary Michael BLA '86, and Dean Mollete BLA '94) is on the design team for the new Georgia State dorms at Techwood as the primary athlete dorms. They are also on the team for the Atlanta Center Colleges of

Morris Brown/Clark-Atlanta (field hockey) and Morehouse College (basketball and rhythmic gymnastics). Bishop Planning is also the prime on the design of the velodrome/ cycling/ archery venue at Stone Mountain Park. Also at Stone Mountain is the General Improvements Plan being conducted by EDAW and the tennis venue by Tunnell-Spangler Associates (Tamara Calabria MLA '95 Craig Thurmond BLA '90 and Mack Cain BLA '75). Tunnell-Spangler also has the equestrian venue in Rockdale County just south of Athens.

Pickering, Inc. with Paul Brickey (BLA '71), Jon Benson (MLA '92), and Matt Kleinbub (BLA '92) is one of the firms developing designs for the whitewater venue on the Ocoee River. This event was highlighted in our last newsletter with a substantial article on the Ocoee and Steve Hendricks (MLA '75), US Forest Service lead on the project. Pickering, Inc. also developed designs for two Olympic promenades at the Atlanta University Center and the Atlanta Civic Center

EDAW Atlanta is designing the canoeing and rowing venue at Lake Lanier.



Unique to this design are floating grandstands to minimize environmental impact. In Athens, UGA will host Olympic events at the Coliseum (volleyball and rhythmic gymnastics) and Sanford Stadium (soccer). Dexter Adams (BLA '76) is Head of Grounds at UGA and involved in the transformation of parking, pedestrians/bicycle corridors, and campus greens. SED alums working with Adams include Kimo Polster (BLA '76), Don Shaw (BLA '77), David Hale (BLA '80), Sara Furr Schatz (MLA '93), and Chris Adamson (BLA '94). The School will show all of the venue design and planning during a special exhibit in the SED Gallery over the Olympic Summer of 1996.

Twenty years ago in 1976, my work for then-Governor Jimmy Carter as the Senior Planner of Natural Resources on projects such as the State's scenic rivers study, Heritage Trust Land Acquisitions, and Greenway Planning allowed me to travel the state. It was delightful when people everywhere described the beauty to be found in the Southeastern US landscape. By involving so many landscape architects in the planning of all Olympic venues, this beauty will shine through and prosper. ■

DEAN KERRY DAWSON

Bishop Planning is an African-American owned landscape architecture and planning firm employing four UGA Alumni. The firm's Principal owner, David Bishop, was a former faculty member at SED. Shown above is the velodrome and archery venue at Stone Mountain where Bishop Planning is the prime for design. This event is temporary and will be moved to another location at a later date. The site is one of the few severely degraded portions of Stone Mountain and after the Olympics, Bishop Planning will restore the site to its natural condition.

School News

NOTES

GEORGIA LANDSCAPE AWARD

At its annual meeting in March, the Georgia Trust for Historic Preservation named SEDs 1994 Georgia Landscape magazine as an Outstanding Publication, Program, or Project.

SOS! AWARD

The Georgia Save Outdoor Sculpture! project, conducted by the SED, was recognized in 1994 by the Georgia Trust for Historic Preservation with an Annual Preservation Award. The project was named as an Outstanding Publication, Program, or Project for its statewide effort to enlist volunteers to inventory outdoor sculpture in Georgia.

NATIONAL PRESERVATION WEEK '95

The SED, in conjunction with local preservation organizations and agencies, observed National Preservation Week (May 14th-20th), a celebration coordinated by the National Trust for Historic Preservation since 1973. Highlights included an address by Mark Edwards, Georgia State Historic Preservation Officer and Director, Division of Historic Preservation, Georgia Department of Natural Resources. A reception held in the Founders Memorial Garden, a self guided tour of North Campus, and a barbeque lunch honoring new inductees of the Sigma Pi Kappa Honor Society also marked the event.

FRESHMAN SAT SCORES

UGA recently joined the top ten among public universities for entering freshmen scores on the Scholastic Aptitude Test (SAT). The entering UGA average freshmen SAT score will be 1190 this fall.

ENROLLMENT INCREASES

Applications of approximately 14,000 students were received for this fall's UGA freshman class, up almost 14 percent from last year's 11,952 record. In his State of the University address last fall, President

Charles Knapp proposed that university enrollment be increased to 35,000 by the year 2000, with support for personnel and facilities.

LEGACY CONFERENCE

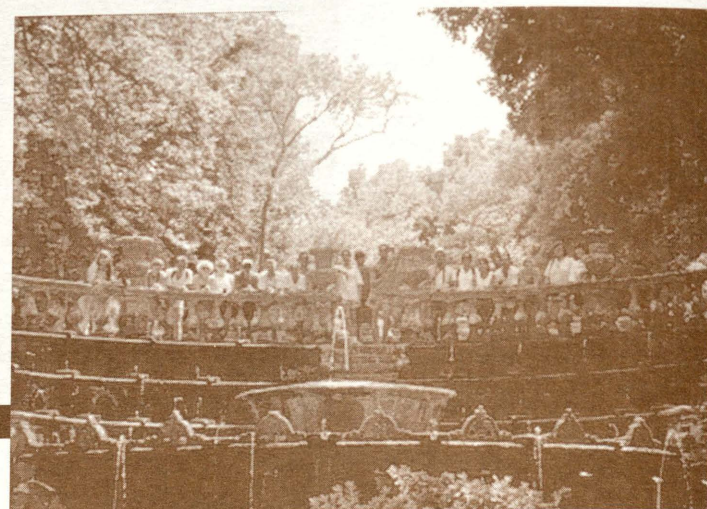
In November, the SED co-sponsored Legacies Etched on the Land: A Celebration of the 100th Anniversary of the Savannah Park and Tree Commission. Dean Kerry Dawson and Professors Catherine Howett, Richard Westmacott and Mark Reinberger chaired discussion sessions and presented papers. Additional scholars from the fields of landscape history, folklore, geography, and African-American studies discussed the multi-layered landscapes of coastal Georgia.

CONTINUING EDUCATION

Over the past year the school has initiated new professional continuing education programs that respond to the biannual state requirement for landscape architecture licensing renewal. In April, 0.5 CEUs were offered during Alumni Weekend program and the Office of Preservation Services conducted an 0.8 CEU course for local authorities that administer preservation ordinances. Scott Weinberg and Roger Moore have offered national CEU computer workshops for ASLA that have been held at the school several times. In January 1996 the SED is offering a two-day 1.2 CEU program for professionals throughout the southeast region.

MASTER OF HISTORIC PRESERVATION

As one of thirteen professional preservation programs in the nation, admission to the MHP program remains particularly competitive with 70 applications received for the fall 1995 class. Eighteen students with a GRE average of 1164 will be entering the program. Applicants indicate they are attracted to the comprehensive range of the curriculum. This year the MHP program has accepted students from 26 states; graduates work in fifteen states plus the District of Columbia (39% in the public sector and 61% in the private sector).



Summer '94 in Cortona, Italy

Having traveled with the University of Georgia Studies Abroad Program in the past, this year I was determined to provide a different experience for landscape architecture students. I wanted a real service project with real clients.

A year before the Cortona trip, I visited Verona and attended an annual agricultural fair, the largest of its kind in Europe. The exhibition was held at the Veronafiere – the Verona Fairgrounds. While I was in Verona, representatives from the fair's management requested the site be used as a class project and offered to support a student trip to develop fairground site plans.

Knowing that I was scheduled to go to Cortona the summer of 1994, I began to talk with students and raise interest in the project that would transform 78 acres of asphalt and buildings into a regional showcase. Creating mini-plazas and planted areas for people to view and experience, and to shade areas from the sun were the design criteria. Nine students who were scheduled to work on their terminal projects took an interest in the project.

While still in the States, I talked with students about how to organize the project and agreed to provide the fairgrounds' management with three concepts using three teams. Each group worked together on a "conceptual master plan." Once that was accomplished, each team broke the site into three areas and each student was responsible for a specific site design and details, all of which followed their master plan.

One of the students' concerns was plant materials that would be appropriate for Verona. As we toured the city by private bus during our stay, the students looked out the windows at plants and shouted their names out while others noted them down in their notebooks. By the end of our three days they had a large plant list that would help them in their selection.

After spending the summer in Italy and visiting sites such as Naples, Pompeii, Rome, Perugia, Assisi, Florence, Sienna, Villa de-Este, Villa Farnese, Bomarzo, and others not on the official list, it

was time for presentations. On August 10th the Director General of the fairgrounds and a small contingent of Verona dignitaries arrived in Cortona for presentations. After it was over the students delivered three complete and rendered sets of drawings for their consideration and use. The comments from the Verona group were positive and appreciative of the students' effort.

A special thanks to participating students Joe Hoyle, Chris Kennedy, Randy Cave, Kathy Coffin, Julia Hinkle, Rachel Teske, Vassa Cate, Todd Stanton, and Mark Parker for their hard work during the summer of 1994. ■

SCOTT WEINBERG



Bob Hill Retires

The retirement of Bob Hill (BLA '54, MLA '64) became official on June 17 following graduation ceremonies, lunch in the garden, and presentation of a "retirement" rocking chair for Bob's Lake Burton porch.

A lot of handshakes and hugs were exchanged with the Ellaville, Georgia native, whose academic career at UGA began as an incoming freshman in 1950 and ended 45 years later in the Founders Memorial Garden over which he had served as Director for 20 years.

Among the many professional and academic recognitions from 33 years of on-going University service are two that, indeed, are very special to Alumni of the School. Bob received the SED's (first) Distinguished Faculty Award in 1977, and in 1994, was presented the SED's Distinguished Alumni Medal.

Events like retirement, however, allow individuals to express their more personal feelings about our departing friend. The following statement of thanks was one of the many I've recently received. It was taken from a letter that accompanied a 1972 BLA graduate's gift to the Robert Johnson Hill Scholarship Fund, addressed to my attention:

"Thank you for nurturing me and transferring your knowledge to me;
Thank you for your honest and caring counsel;
Thank you for your sense of honor and your smile – you were very much an oasis in a desert of scowls and frowns;
Thank you for expecting much of and from me; and
Thank you for your friendship."

Amen... ■

In the Garden

How does the Garden grow? Very well indeed! The mild winter along with extra watering have helped keep the Founders Memorial Garden in bloom since early spring. We have been using a number of different summer annuals this year, especially those that provide color with their foliage.

A special thanks goes to Dan Franklin (BLA '63), who not only finds time to bring us additional plants, but is continually working to stimulate interest in the garden.

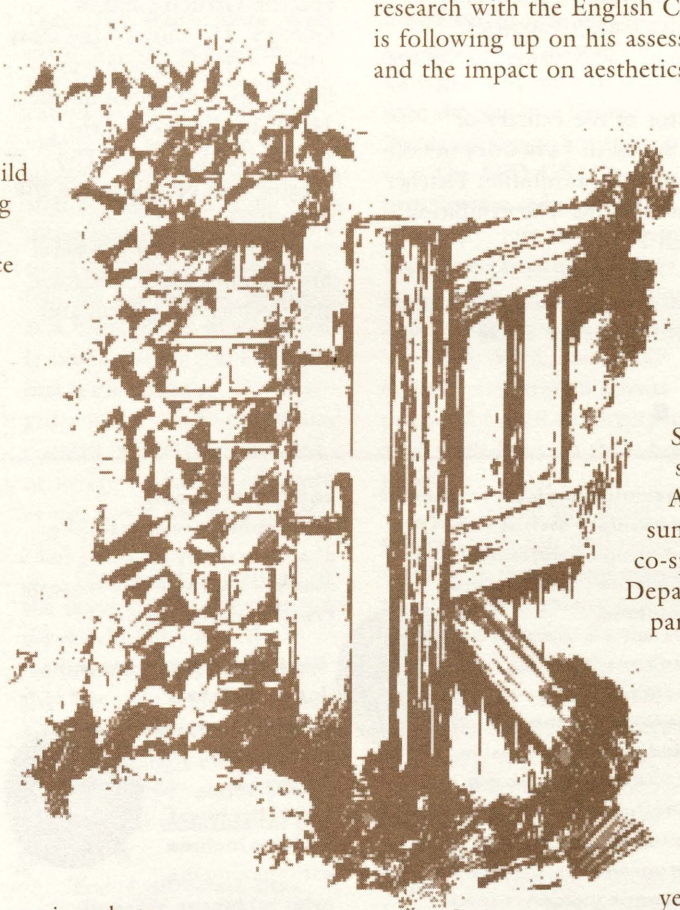
Three graduate assistants, Heyward Townsend (fall and winter quarters), Tres Fromme (spring quarter), and Patrick Hoppe (summer quarter) were invaluable in maintaining the garden over the last year.

Be on the lookout for an upcoming photo article on the garden in Veranda magazine. Also consider becoming involved with the Founders Memorial Garden as we prepare for a special tours program during the 1996 Olympics. ■



Photo by Andy Hays

ALLEN STOVALL



DOUG PETERSON

SED International Programs

Dean Dawson was in the Australian capitol city of Canberra last winter to visit the School of Environmental Design's newest landscape architecture exchange program at the University of Canberra. He recently signed the Exchange Agreement and toured facilities as part of the University of Georgia's review process.

The SED has had a landscape architecture exchange program with the Royal Melbourne Institute of Technology (RMIT) since 1976, and Dean Dawson also reviewed program status there. He particularly enjoyed meeting UGA alumnus and past chair of Landscape Architecture at RMIT, Jim Sinatra (BLA '64). Jim gave the Dean a tour of his private practice where several community planning projects with aboriginal communities were on the boards.

Professor Sinatra presented his work at UGA only a week before the Dean arrived in Melbourne.

This year SED hosted Australian students, Phillip Gray and Adam Littlefield. Five Australian students will visit this year including Charmaine Devine, Esther Dickens, Thanh Lam, David Head and Mathew Slade. Joshua Koons, Jon Williams and Valerie Mosley are the SED students who recently returned from Australia.

While in Melbourne, Dean Dawson also spent time with the Australian Planning Firm, ACIL, formulating plans for the second research phase of the National Parks Plan he worked on in 1991 for the Indonesian portion of New Guinea. Dean Dawson has been invited to present this work in October at the 32nd International Federation of Landscape Architects (IFLA) Congress in Bangkok, Thailand. His paper is in-press for the proceedings.

Richard Westmacott is continuing his international research with the English Countryside Commission where he is following up on his assessments of change in agriculture and the impact on aesthetics, ecology and culture in the countryside. Richard began this

work in 1972 and has returned every 11 years (in 1983 and 1994) to assess changes in agricultural landscapes. The results have been published as "New Agricultural Landscapes" and "Agricultural Landscapes, a Second Look." The results of the 1994 survey are in press.

The School's Cortona, Italy Study Abroad Program is going strong and Professor Lucia Athens took a dozen students this summer. The Cortona program is co-sponsored with UGA's Art Department and almost 100 students participated this year. Our newest study abroad program is our Historic Preservation program at Oxford University in England. UGA has had a presence at Oxford for many years but this summer will be the School's first offering of courses. The courses in the first year will focus on architectural and landscape architectural history. ■

IN MEMORIAM

SED 5th Year student John Eubanks passed away in an accident while interning in the Grand Tetons National Park this summer. John had one of the highest grade point averages in the School and was a loved and caring person. The School Alumni Association will present a \$500 scholarship this year to a SED student who has John's interest in the environment and conservation.

ASLA Georgia Chapter Trustee and former SED Alumni Association board member Wayne Grace (BLA '75) passed away in August after an extensive illness. Wayne was a caring, unforgettable person with laughter and a love for his profession as his hallmarks. We will miss him. Wayne left behind his wife, Gay and two young sons. Donations to a scholarship fund for his boys can be sent by contacting Jay Scott (BLA '75) at Roy Ashley & Associates at 404-352-2200.

Paul Nicolas Young (MLA '74) passed away in Merseyside, England in September 1994. After leaving Georgia, Paul returned to his native England where he practiced and taught landscape architecture at various institutions throughout England and contributed greatly to the first UK Garden in Liverpool. Paul will be especially remembered for his contribution to the environment, to his profession, and to his students.

Other Alumni deaths:

Mr. C. Newt Smith (BFA '42 in Landscape Architecture) from La Grange, Georgia passed away in 1994.

Mrs. Frances Wright Hale (BFA '48 in Landscape Architecture), from Tuscaloosa, Alabama passed away in May 1994.

School News

SED Guest Lecturers



Karen Phillips

Dr. J. Baird Callicott gave a lecture in **November** titled "The Land Aesthetic." Dr. Callicott, author of *In Defense of the Land Ethic*, is Professor of Philosophy and Natural Resources at the University of Wisconsin at Stevens Point. He is also the designer and teacher of the nation's first course in Environmental Ethics.

J. Toby Tourbier, ASLA, President of Tourbier & Walmsley, Inc. and Professor of Landscape Architecture, University of Dresden, Germany presented "Bio-Technical Approaches to Stream Management." An environmental planner with a degree in landscape architecture, Tourbier is an advocate for stream valley and greenway planning with emphasis on stormwater management and water resource protection.

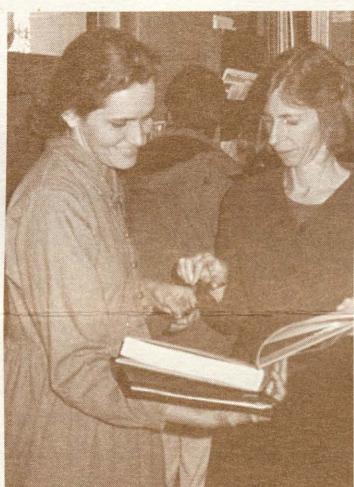
In **January** Jim Sinatra (BLA '64), former Department Head of Landscape Architecture at Royal Melbourne Institute of Technology, gave a lecture titled "A Design Lecture of No Particular Style." He presented current projects that illustrate landscape and cultural issues in Australia based upon Jim's search for Australian landscape identities.

In **February** Jay Craig, founder of the Birmingham Bosnia Task Force, spoke on "WARchitecture & URBacide in Sarajevo, Bosnia-Herzegovina." Craig's organization has helped formulate urban design proposals for the rebuilding of Sarajevo after the cessation of the genocide now taking place. In addition to a slide lecture, Craig conducted a three-week design workshop for Professor Mann's Advanced Landscape Design class.

Robert Wood, ASLA, and Mel Chin, UGA Professor and Environmental Sculptor, spoke in **February**. Their talk, "Your Design Career: Some Realities and Possibilities," focused on key topics facing designers today using "art as the vehicle for the dialog of creativity."

Robin Karson, executive director of the Library of American Landscape History, Inc. spoke in **February** in conjunction with her book and accompanying exhibition *Fletcher Steele, An Account of the Gardener's Life*. The exhibition ran from January 17 through March 2.

In **April** Karen Phillips (BLA '75) delivered the Vincent Lecture during Alumni Weekend to an appreciative and entertained audience (see Alumni Weekend on page 9). ■



Robin Karson signs a copy of her book for SED student, Linda MacBeth.



Montessori Students Visit SED

On February 7, thirty-seven 4th-6th grade students and three teachers from the Athens Montessori School visited the School of Environmental Design. They met with Pratt Cassity who spoke with them about Historic Preservation in a talk entitled "Why Preserve?" The questions he asked included why is it beautiful? Does it work? And why is it important to link to the past?

Doug Peterson, Founders Memorial Garden Horticulturalist gave the students a guided tour and a brief history of the Garden and the Garden Club of Georgia. He showed the class where a time capsule was buried to commemorate the 100th anniversary of the Ladies Garden Club. The capsule will be opened in the year 2091.

After their tour, Cheryl Mihalko discussed landscape architecture with them and

talked about what landscape architecture is, what landscape architects do, and how to become one. She showed plan views and the connection between the same design drawn in elevation and perspective views.

The program, developed and organized by SED Librarian René Shoemaker, also included a visit to the SED Gallery and a tour through design studios.

The teachers compiled a vocabulary list of new words they learned during the day including identity, historic district, restoration, environmental design, tangible, rehabilitation, and craftsmanship.

Each child sent a thank you note which included a bird's eye view of a real or imagined place. The drawings were on display at the HB Owens Resource Center in Caldwell Hall during March. ■

RENE SHOEMAKER

STAFF NOTES



Leisa Baker is the SED accountant and Budget Analyst. Elected as Vice President of Staff Council, she is one of five members who meet with President Charles Knapp quarterly to discuss UGA staff concerns.

Tam Fields worked for over a year in the main office but recently became Project Director for Interactive Computer/Video Tutorial in Design Studios.



Marsha Grizzle, Degree Program



Specialist, assists the Director of Resident Instruction in the advising of undergraduate landscape architecture students.

Deanna Kent is Administrative Secretary to the MLA and MHP programs. In 1979 she became the Graduate Secretary to the MLA program. In 1982 the MHP program was initiated and Deanna took on responsibilities for this program as well.

Jennifer Maul assists with



public service and development responsibilities. She is currently pursuing her masters degree in the Historic Preservation program.

Chris Shaw began working for the SED as a computer services specialist in December 1994. His latest projects include establishing the Internet for the SED and implementing a school-wide network connecting staff, faculty and student computers.



Crystie Smith is the SED Secretary. She handles all incoming mail and telephone calls.

Tilda Wall has just completed nineteen years service to the SED and was promoted to Business Manager this year after having been in the Secretary to the Dean position for the past eighteen years. Her position involves planning, coordinating, establishing, reviewing and implementing business administrative tasks.



SCHOOL NOTES

NEW ASLA FELLOWS

Howard Abel (BLA '64), Roy Ashley (BLA '64), and Ken Simmons (MLA '72) are among the thirty-eight 1995 class of Fellows to be inducted at ceremonies in Cleveland, Ohio on October 7. Our congratulations to these alumni for this special honor!

DISTINGUISHED ALUMNI MEDAL

REQUEST FOR NOMINATIONS

The School of Environmental Design Alumni Association Steering Committee requests nominations for its Distinguished Alumni Medal.

The purpose of this award is to recognize Alumni who have contributed substantially to the reputation and well-being of the University of Georgia, SED. This is the highest award given by the Alumni Association.

The criteria for this award is outstanding professional achievement, which can occur in a wide range of activities within the discipline of landscape architecture. These are:

1. Excellence in executed works of landscape architecture.
2. Public Service and/or administration.
3. Professional school instruction.
4. Writing, research, or other scholarly endeavors.
5. Direct service to the School of Environmental Design.

Alumni can be nominated by any Alumnus, by any faculty member, or by any student. Nominations must be accompanied by a resume of the nominee's professional activity. All nominees will be voted on by the Alumni Association Steering Committee at their November meeting. Members of the Steering Committee are not eligible during their terms. Please send all nominations and resumes by November 3, 1995 to:

**Clay Mooney
Design Associates
14 S. Pack Square
Suite 362
Asheville, NC 28801
704-258-2988
704-258-2856 (FAX)**



SED ON-LINE

In April, the School of Environmental Design placed its first pages on the fastest growing portion of the Internet, the World Wide Web. The World Wide Web (WWW, W3) represents a new age in digital communication where text, images, video, and sound can be accessed through the use of a web browser and home pages using hypertext links. On most computers a hypertext link, or a hyperlink, shows up as a highlighted word (usually blue). When you click on a link with a mouse, the computer takes you to the related content linked to that word or image regardless of where in the world the data physically resides.

The Web is a portion of the network of servers around the world known as the 'Information Superhighway' that has seen a global explosion of growth due to its ease of use and high entertainment value. In 1991, about 100 sites offered information on the WWW.

Today, there are over 50,000 sites and millions of users worldwide. Each page on the Web has a unique address called a Uniform Resource Locator (URL) that

identifies it throughout the Internet. The University of Georgia's home page URL is <http://www.uga.edu>. The www lets the user know it is a web server; the uga distinguishes the University of Georgia, and the edu tells the user the site is a United States education institution.

The SED URL is <http://www.sed.uga.edu>. Currently, information available on SED pages allows prospective students to access and retrieve information on the BLA, MLA, and MHP degree programs. Students can send e-mail to faculty and staff from links on their home pages.

The public and design professionals can find information on continuing education seminars, gallery exhibits, and guest lectures. By the end of the year SED plans to have a virtual tour of the SEDs Founders Memorial Garden. According to Chris Shaw, the SED web server administrator, since the 18th of May (the day usage statistics began) through the month of June, the SED WWW server received over 11,000 'hits', or requests for information other than those requested by UGA clients. Requests for informa-

tion come from all over the world, including Austria, South Africa, Greece and Germany. Approximately 30% of the requests however, are from higher learning institutions and commercial United States companies.

One of the several projects currently under development by Public Service Director Cheryl Mihalko is an alumni/professional exchange. If you would like to place a short paragraph about your current professional involvement on the SED alumni page, send e-mail to webmaster@sed.uga.edu or call 706-542-4463. An additional exciting project is Career Links. This project will place a link from all K-6 and 7-12 educational school pages in Georgia to the SED homepage link. This will allow potential students to access SED for career exploration in landscape architecture and historic preservation.

Starting with this issue, SED News was available on line even before it went to press! ■

GLOSSARY

WWW (World Wide Web)

Two meanings - First, loosely used: The whole constellation of resources that can be accessed using Gopher, FTP, HTTP, telnet, Usenet, WAIS and some other tools. Second, the universe of hypertext servers (HTTP servers) which are the servers that allow text, graphics, sound files, etc to be mixed together.

Internet

The vast collection of interconnected networks that use the TCP/IP protocols and evolved from ARPANET in the late 60's and early '70s. The Internet now connects roughly 60,000 independent networks into a vast global internet.

Hypertext

Generally, any text that contains "links" to other documents - words or phrases in the document that can be chosen by a reader and which cause another document to be retrieved and displayed.

URL

URL (Uniform Resource Locator) — The standard way to give the address of any resource on the Internet that is part of the World Wide Web (WWW). A URL looks like this: <http://www.matisse.net/seminars.html>

The most common way to use a URL is to enter into a WWW browser program, such as Netscape, or Lynx.

Browser

A client program (software) used to look at various Internet resources.

E-mail

(Electronic Mail) — Messages, usually text, sent from one person to another via computer.

E-mail can also be sent automatically to a large number of addresses (Mailing List)

Faculty News

Profile

C A T H E R I N E H O W E T T
MLA University of Georgia, '76
MA University of Chicago, '57

Professor Howett was recently invited to join the committee of Senior Fellows in Landscape Architecture Studies at Dumbarton Oaks. This important committee — comprising six appointed Senior Fellows and the Director of Studies in Landscape Architecture — advises the Director of Dumbarton Oaks on the program. Formal appointments will be made by the Trustees for Harvard University with a three-year term beginning July 1, 1995.



Professor Howett recently published an article entitled "Interpreting a Painful Past: Birmingham's Kelly Ingram Park" in *Cultural Resource Management*, volume 17, number 7 1994. CRM is published by the National Park Service to provide cultural resources management information for parks, federal agencies, Indian tribes, states, local governments and the private sector. She also participated in a 1995 lecture series entitled "The Nature of Cities" hosted by the Harvard University Graduate School of Design. Her lecture, "Regrounding Nature in the New City," occurred in March 1995. Faculty interested in hearing the lecture attended a LUNCH-IN-THEORY faculty seminar in May sponsored by the UGA Humanities Center.

Professor Howett interviewed Peter Calthorpe, author of *The Next American Metropolis*, on the Humanities Center's public radio program, "The Bigger Picture." The weekly radio program, airing Sunday nights on WUGA-FM (91.7FM), features University of Georgia faculty interviewing authors of influential new books. ■

FACULTY LECTURES

Akers, Mary Anne. "The Tao of Neighborhood Revitalization: The Atlanta Project." Presented at the 36th Annual American Collegiate Schools of Planning. Phoenix, Arizona. November 1994.

Alvarez, Leonardo. "Fractal and Euclidian Geometries: Towards a Framework for a Contemporary Design Aesthetic." Presented at IX Pan American Biennial of Architecture. Quito, Ecuador. November 1994.

Alvarez, Leonardo. "Design Charrettes and Landscape Architects as Team Leaders." Presented at the Florida Chapter American Society of Landscape Architects Annual Conference. Fort Lauderdale, Florida. June 1994.

Athens, Lucia. "Sustainable Landscapes." Presented to the Central Texas Builder's Conference. Austin, Texas. March 1994.

Cassity, Pratt. "Keynote Address: Local Preservation...Where the Action Is!" Presented at the Milledgeville Heritage Foundation Annual Meeting. Milledgeville, Georgia. May 1994.

Cassity, Pratt. "An Assault on Property Rights? Who Says?" Presented at Preservation North Carolina's 1994 Annual Conference. Winston-Salem, North Carolina. October 1994.

Cassity, Pratt. "Historic Preservation Commissions into the 21st Century." Presented at 1994 Kansas Historic Preservation Conference. Wichita, Kansas. October 1994.

Coyle, Gregg and Scott Weinberg. "Planning Pursuit." The Game. Presented at American Planning Association National Planning Conference. San Francisco, California. April 1994.

Dawson, Kerry. "Therapeutic and Healing Gardens." Presented at the Plant People Relationships Conference. University of California, Davis, March 1994.

Howett, Catherine. "Cultural Landscape Preservation: Science or Art." Keynote Address, Annual Meeting of the Alliance for Historic Landscape Preservation. Charleston, South Carolina. May 1994.

Howett, Catherine. "Pleasure Gardens in the South: A Regional Aesthetic." Presented at Georgia Legacies Etched on the Land Conference, sponsored by Armstrong State College, Georgia Historical Society, University of Georgia School of Environmental Design, and the Savannah Park and Tree Commission. Savannah, Georgia. November 1994.

Mann, William. "Edgar Allen Poe and the Landscape Garden Movement: the Movement's Influences on Poe and His Influences on the Movement." Presented at Council of Educators in Landscape Architecture Annual Meeting, 1994. Mississippi State University, Gulf Shores, Mississippi. September 1994.

Morrison, Darrel. "A New Landscape Aesthetic." Presented at the Annual Meeting of the New York Chapter, American Society of Landscape Architects. June 1994.

Ndubisi, Forster. "Collaboration in Urban Revitalization: Working with Distressed Communities." Presented at Council of Educators in Landscape Architecture Annual Meeting. Mississippi State University, Gulf Park Conference Center, Long Beach, Mississippi. September 1994.

Ndubisi, Forster. "Collaborative Group Process in Urban Revitalization: Implications for Planning Practice." Presented at American Collegiate Schools of Planning Annual Meeting. Tempe, Arizona. November 1994.

Nichols, David. "Developing a Computerized Plant Selector Program." Presented at 1994 Southern Nurserymen's Association 39th Annual Research Conference. Atlanta, Georgia. August 1994.

Nichols, David. "Georgia Urban Waterbody Education Plan and Program." Presented at the Council of Educators in Landscape Architecture Annual Conference. Long Beach, Mississippi. September 1994.

Reinberger, Mark. "The Architectural Drawings of Cliveden." Presented at the Society of Architectural Historians Convention. Philadelphia, Pennsylvania. April 1994.

Stovall, Allen. "Preserving and Interpreting Appalachian Landscapes." Presented at the 5th Annual Southern Appalachian Man and the Biosphere Conference. Hendersonville, NC. November 1994.

Westmacott, Richard. "African-American Gardeners in the Rural South: Their Contribution to Southern Culture." Presented at the African-American Landscape Symposium: Historical and Contemporary Contributions to American Space, Places and Icons. North Carolina A&T University. April 1994.

Waters, John J. "The Evolution of Historic Preservation In Georgia." Presented at the Annual Workshop of the Georgia Alliance of Preservation Commissions. Athens, Georgia. 1994.

FACULTY NOTES

Mary Anne Alabanza-Akers' outreach activities involve the Carter Center's Atlanta Project, organizing a statewide association of community-based groups, assisting groups to develop microenterprise programs, and providing technical assistance to community groups in the strategic planning process.



Lucia Athens is currently completing work on the Advanced Green Builder Demonstration in Austin, Texas. This project will serve both as a



demonstration site and testing and monitoring laboratory for issues related to the implementation of sustainable building materials and practices. Lucia led the SED studies abroad group in Italy last summer. In addition to teaching architectural and urban design in Cortona, Lucia will be pursuing independent research on the sustainable landscapes of the Tuscan region.

Pratt Cassity has recently completed a Forum Information booklet for the National Trust for Historic Preservation entitled "Maintaining Community Character: How to Establish a Local Historic District." and is currently involved in the Trust's Critical Issues Fund project addressing design guide-lines for historic districts.



Kerry Dawson was highlighted in a lengthy article in the winter 1995 issue of the Davis Arboretum Review where it was written: "Arboretum staffers were saddened to learn that Kerry J. Dawson had resigned his position as UCD



Arboretum Director in September. Dawson, who had been on leave since August of 1992, is Dean of the UGA School of Environmental Design The staff of the Davis Arboretum are grateful

to have had the opportunity to work under Kerry Dawson's dynamic leadership. We count him as a good friend and a valuable advisor, and we wish him every success in his new position."

Claudia Levy's research focuses on issues of public and collective landscapes and on the relationship between representation and meaning in the formation and interpretation of these landscapes. Currently she is involved in a study of the public landscapes of the city of Vienna, Austria.



Roger Moore teaches courses in computer graphics and land planning, addressing visual simulation and presentation, computer-aided design, and landscape planning issues. Recent research awards include a Ford Foundation Research Grant for work on state and local land use management, the Charles Eliot Traveling Fellowship, and a UNESCO grant for simulations development.



David Nichols serves as the secretary for the Council of Educators in Landscape Architecture, an international organization dedicated to the advancement of education and scholarship in the field of landscape architecture. He also serves as the treasurer of the University chapter of Gamma Sigma Delta, and as the faculty advisor for the Georgia Students of Landscape Architecture.



William Ramsey and his assistant Tamela Fields have received over \$100,000 in grant monies for an interactive computer/video tutorial for design studio education.

Mark Reinberger teaches courses in the undergraduate LAR program and the MHP program. His research interest is American architecture. Mark recently published an article on Federal Architect Benjamin Henry Latrobe and is currently working on a book with landscape historian Elizabeth McLean on the Architecture and Landscape of

the Philadelphia Colonial Country House.



René Shoemaker SED librarian, was appointed to the adjunct faculty in April. René has been the Librarian at the HB Owens Resource Center since September 1994.

Scott Weinberg has changed responsibilities within the School by becoming the new Director of Resident Instruction following Robert Hill's retirement. Outside the School, Scott serves as the Chair of the Athens-Clarke County Planning Commission.



Lisa Vogel began work as the SED Grants Coordinator in December 1994. Lisa manages public service grant projects as Historic Preservation Services Coordinator; assists faculty members with grant information and administration; and teaches a graduate colloquium on grant writing.



Neal Weatherly, Associate Professor of Landscape Architecture, initiated and coordinates the two Georgia study courses for the LARE.



NEW FACULTY

The School of Environmental Design is pleased to announce the appointment of Stephanie Gibbs as a tenure track Assistant Professor. In 1983 Ms. Gibbs received a BA in History from Vassar College. In 1995, she completed her MLA at the University of Georgia School of Environmental Design. Stephanie brings six years of experience in housing and community development. She has been recently working on pedestrian corridors in Atlanta for the 1996 Olympics.



FACULTY AWARDS AND HONORS

1994 National ASLA Research Special Mention: The Moses H. N. Cone Memorial Park, N.C. Study
IAN FIRTH



1994 NCC Chapter of ASLA Award of Excellence for the Davis Greenway
KERRY DAWSON

1995 SEDAA Distinguished Faculty Award
GREGG COYLE

1995 Certificate of Merit from The Universidad Autonoma de Campeche, Mexico
ALLEN STOVALL



1995 University of Georgia Honors Day Faculty Member
JULIE MYERS

1995 Council of Educators in Landscape Architecture Recognition Award
WILLIAM MANN

1995 Florida Chapter ASLA Award of Excellence and the 1995 Frederic B. Stresau Award of Excellence: Places in Time: Historic Architecture and landscapes of Miami. Florida Chapter ASLA Award of Excellence: From Adversity to Opportunity: The New South Dade Planning Charette
LEO ALVAREZ



INTERNSHIPS AND JOBS

Gregg Coyle replaced Scott Weinberg as Director of Educational Affairs this year. Professor Coyle coordinates internship and job placement for the school. If you have a job opportunity or are interested in obtaining an intern, contact Professor Coyle at 706-542-4718 or visit 601 Caldwell Hall. This summer, under the direction of Professor Weinberg, the School placed 52 interns with firms from Massachusetts to Wyoming. The internship process may be facing a new twist if the University adopts the semester system in 1997.



The School of Environmental Design has close to 60 alumni presently affiliated with academic institutions. There are approximately four dozen alumni faculty in landscape architecture and historic preservation as highlighted by the thirty profiles included in this issue. Two dozen alumni work with Campus

Planning, Architects and/or Physical Plant Office

including **DEXTER ADAMS** (BLA '76) who heads

the grounds divisions at UGA. Many faculty alumni

have chaired their respective landscape architecture

departments,

including **TONY**

BARNES at

Kansas State

(BLA '65), **VINCE BELLAFIGLIO** at Illinois (BLA

'66 and MLA '68), **ED BENNIS** at Manchester,

England (BLA '72), **JOT CARPENTER** at Ohio

State (BLA '60), **JOHN CRONE** at Arkansas (BLA

'68), **BOB GRESE** at Michigan (BLA '78), **JIM**

SINATRA at the Royal Melbourne Institute of

Technology in Australia (BLA '64), and **HERRICK**

SMITH at the University of Florida (MLA '61).

The most recent SED faculty placements

occurred when **DON STALEY** (MLA '94) and **BART**

JOHNSON (MLA '92) were hired as Assistant

Professors of Landscape Architecture at Texas Tech

University and at the University of Oregon, respec-

tively. Don teaches and does research in computer

technology and environmental education. Bart

received his Ph.D. in Ecology from UGA in 1995.

His MLA, Ph.D. and academic interests are in landscape ecology.

Alumni News



W. CLAY ADAMSON, JR.
MLA University of Georgia, '80
BLA University of Georgia, '60

Clay Adamson is the Director of the Physical Plant Division of the Medical

College of Georgia in Augusta. Active in professional and commu-

nity organizations, Clay has received numerous awards, the most recent of which are the 1994 MCG Student Government Award and the Meritorious Service Award, APPA: The Association of Higher Education Facilities Officers in 1993.

DOUGLAS C. ALLEN
MLA Harvard University, '76
BLA University of Georgia, '71

Doug Allen has been teaching on the faculty of the School of Architecture at the Georgia Institute of Technology since 1977. Since that time he has maintained a small but determined practice in Atlanta and has lectured widely on issues of landscape architecture and urban design. After eighteen years at Georgia Tech, "he misses Athens on Saturdays in the fall more than ever, and wonders with ever-increasing amazement at the distance between the words Landscape and Architecture."

ALTON A. (TONY) BARNES, JR.
MLA University of Illinois, '68
BLA University of Georgia, '65



Tony Barnes paid a visit to the SED last summer. He has been teaching at Kansas State University for 23 years and served as Department Head from 1993-1995.

EDWARD M. BENNIS
MA Conservation Studies, IAAS, University of New York, '89 BLA University of Georgia, '72

Ed Bennis is the Head of Landscape at Manchester Metropolitan University in Manchester, England. Additionally he is active in the establishment of the Cheshire Trust for Historic

Parks and Gardens and developing a research project for the Welsh Historic Garden Trust.

J. BROOKS BREEDEN
MLA University of Georgia, '74

For the past 20 years Brooks Breedon has taught on the Landscape Architecture faculty at Ohio State University. Throughout this time he has been active in developing computer software and promoting the use of technology in education and design.

JOT CARPENTER
MLA Harvard University, '62
BLA University of Georgia, '60

Jot Carpenter, past ASLA President, past Chair and Professor at Ohio State University, has been spending recent summers with the National Park Service in Yosemite.

DAN W. DONELIN
MLA Michigan State University, '67
BLA University of Georgia, '65



Dan Donelin has accepted the post of head of the department of landscape architecture/regional and community planning at Kansas State University. He was recently named a Fellow by the American Society of Landscape Architects and is currently chair of the national Landscape Architecture Accreditation Board. He has been very active in research relating to schoolyard ecosystems and lectures and publishes frequently on this and other subjects.

ROBERT GRESE
MSLA University of Wisconsin, '84
BLA University of Georgia, '78

Robert Grese is an Associate Professor in the School of Natural Resources and Environment at the University of Michigan. In addition to chairing his department during the 1992-1993 academic year, he has lectured and published often on topics related to Jens Jensen. Look for his contribution to *Shaping Heartland Landscapes*, William Tishler, ed., currently in press.

KAREN HUDSON
MHP, University of Georgia '88



Karen Hudson is presently with the University of Kentucky as a staff architectural historian with the Program for Cultural Resource Assessment. In addition to her duties at the University, Ms. Hudson is also a preservation consultant, writer and lecturer.

HENRY LU
MLA Harvard University, '91
BLA University of Georgia, '89



Henry has been Assistant Professor in the Landscape Architecture and Regional Planning Department at the University of Massachusetts, Amherst since the Fall of 1994. Before joining the faculty at Amherst Henry worked in the office of Peter Walker & William Johnson and Partners in San Francisco.

DAVID MAAS
MLA University of Georgia, '94
BA University of South Carolina, '91

David Maas has recently joined the faculty of Midlands Technical College as an Adjunct Professor in the horticulture program. He presently heads Eco-Plan South, an environmental planning, design and management firm in Columbia, South Carolina.

ALISARA MENAKANIT
MLA University of Georgia, '91
BA Silpakorn University, '87

Alisara Menakanit has been serving as a lecturer in the Department of Horticulture at Kasetsart University in Bangkok, Thailand.

KAREN STOELZE MIDDEN
MLA University of Georgia, '83
BS Southern Illinois University, '77



Karen Stoele Midden is an Associate Professor at Southern Illinois University in the Department of Plant

and Soil Science. Karen teaches Appreciation of Landscape Design with an accompanying studio as well as two Advanced Landscape Design classes. Karen's research interests include developing educational tools concerning the environment and agriculture for young people. Prior to employment at SIU, she worked for Edward D. Stone, Jr. And Associates in Ft. Lauderdale, Florida.



PATSY EUBANKS OWENS
MLA University of California at Berkeley, '87
BLA University of Georgia, '80

Patsy Owens is an Assistant Professor of Landscape Architecture and the Director of Community Design and Planning Services at the University of California, Davis. Her most recent honor is being named a fellow at the UC Davis Humanities Institute.

SAM ROGERS
MLA University of Georgia, '77

Sam Rogers is an Associate Professor at the University of Tennessee Institute of Agriculture's Department of Ornamental Horticulture and Landscape Design. One of Sam's projects has been the site development plan for the Saturn auto plant in Spring Hill, Tennessee.

SASIYA SIRIBOON
MLA University of Georgia, '85
BS Kasetsart University, '79

Sasiya Siriboon is on the faculty of the Department of Horticulture at Kasetsart University in Bangkok, Thailand. Her most recent project involves reclamation and site planning of an 858 acre gem mine.

HERRICK SMITH
MLA University of Georgia, '61

Herrick Smith recently retired after serving almost 30 years as the Chair of Landscape Architecture at the University of Florida. He built the program into a well respected Landscape Architecture department with close to 100 students. The department added an MLA program a few years ago after a long campaign by Herrick.

SUZANNE TURNER
MLA University of Georgia, '78
BA Emory University, '72



Professor Turner is the Graduate Program Coordinator at the School of Landscape

Architecture at Louisiana State University. She is a frequent writer and lecturer, focusing on the preservation and interpretation of historic and cultural landscapes, history of landscape design and cultural landscape patterns of nineteenth century south Louisiana.

CONSTANCE A. WEBSTER
MLA University of Georgia, '79
AB University of Georgia, '66

Connie Webster is an Associate Professor of landscape architecture at Cook College, Rutgers University, and a partner in the firm Weber Associates. Her current



research interests include French garden history and the french influence on American landscape design. She has lectured widely on landscape and garden history and her articles have appeared in scholarly journals in the US and abroad.

RUSSELL ADSIT
BLA University of Georgia, '75

Russell Adsit recently joined the faculty at Mississippi State University. For over 20 years Russ was owner of an award-winning design/build firm in Memphis. He is a past president of the Tennessee Chapter ASLA, past ASLA Trustee, and was elected ASLA Fellow in 1992.

Alumni Weekend 1995

The School of Environmental Design Alumni Association hosted its 67th Annual Alumni Weekend April 21st to 23rd. SED Alumni from the 1940s to recent grads had the opportunity to network, enjoy presentations, and revisit old haunts with friends.

Beginning on Friday afternoon the Vincent Lecture was given by Karen Phillips (BLA '75), Executive Director of the Abssynian Development Corporation. Ms. Phillip's urban design restoration work in Harlem and other areas of New York illustrates that graduates have career options. What made Karen's presentation so interesting was the description of her personal path from South Georgia to a unique position in the field of landscape architecture.

A reception in the Hubert Bond Owens Reading Room and the SED Gallery in Caldwell Hall followed. As the sun went down Friday night, we trekked to O'Malley's "Zoo Night" in the first of a series of landscape architectural reviews of the ever-changing imbibing landscapes of Athens.

Saturday's itinerary included ERDAS' Bruce Rado's (BLA '71) presentation on ERDAS' GIS systems. Other computer applications were demonstrated by UGA professors Cheryl Mihalko and Scott Weinberg, and UC Davis PhD Candidate Steve Greco, such as the diversity of LANDCADD and the "Information Super Highway." Bruce Ferguson lectured on Stormwater Infiltration techniques. Kip Wright (MHP '91) reviewed Section 106 Procedures of the National Historic Preservation Act. Alumni earned continuing education credits for involvement in Saturday's presentations.

The Saturday evening dinner was held at the State Botanical Garden's Conservatory Building following a tour of the grounds and cocktails. Awards were given to Mr. Roy Reece (BFA '48) for Distinguished Alumni and Gregg Coyle for Distinguished Faculty Member. A moving dedication was given to Professor Bob Hill, who retired after 30 years of service to the School. Development Director Allen Stovall announced the establishment of the Robert J. Hill Scholarship Fund, intended for deserving in-state freshman SED students. Bob's close friend Charley Godfrey (MLA '71) was the first to donate to this new fund. I speak for everyone who has ever stepped through the doors of Denmark and Caldwell Halls, that Bob Hill was a great influence and friend to us all over the years.

In addition to an expanded schedule of events, the First Annual Golden Hoe Golf Tournament was held Sunday morning at Lane Creek Golf Club. A field of forty were forced to battle perfectly sunny and cool conditions to have a great time. The event was won by Mike Young Designs. ■



Design charrette lead by Vincent Lecturer Karen Phillips.

RICHARD MANDELL, BLA '90

Alumni News

SED ALUMNI ASSOCIATION OFFICERS FOR 1995-96

President

Brad Good (BLA '78)

Past President

Tim Thoms (BLA '81)

President-Elect

Clay Mooney (BLA '79)

Secretary

Sandra Phillips (BLA '88)

Steering Committee

Lisa Vogel (MHP '93)

Thomas Holcombe (BLA '72)

Rick Pariani (BLA '77)

Laura Byington (BLA '82)

Richard Mandell (BLA '90)

William Kelly (MHP '93)

Roy Ashley (BLA '64)

Hoyt Fincher (BLA '71)

Tom Kolias (BLA '78)

Mack Cain (BLA '75)

FORT WORTH MHP ALUMNI REUNION

Sarah Dillard (MHP '93) at the Trust's Washington, D.C. office, with the assistance of Texas alumna Tiffany Strickland (MHP '93) is once again coordinating a reunion of MHP Program alumni, matriculates, and students, in conjunction with the National Trust's annual meeting in Texas. Join Sarah, Tiffany, Pratt Cassity, and John Waters on Thursday, October 12, from 8:00 to 10:00 p.m. at The Flying Saucer, 111 E. Fourth Street, Fort Worth, Texas.

NOTES

BLA ALUMNI

Leroy W. Battle (BLA '88) is a Community Development Planner with the City of Fairfax in Fairfax, Virginia. W. Kent Campbell, Jr. (BLA '90) is an Environmental Planner with Eco-South, Inc. Environmental Consultants in Covington, Georgia. James W. Cooper III (BLA '92) is a Landscape Architectural Contractor with Conceptual Theme Park Design Corporation in South Carolina.

W. Jackson Douglas (BLA '69) has his own landscape architecture and planning firm of Douglas Associates in Charlottesville, Virginia. Valerie Hinsley (BLA '81) is principal of Hinsley & Associates, landscape architects, of Savannah, Georgia.

Mark Emerson Hollinger (BLA '76) is Vice President and Principal Golf Architect with JMP Golf Design Group. The firm has offices in Florida, California and Kuala Lumpur, Malaysia and is currently designing golf courses in Japan, Taiwan, Mainland China, Malaysia, Indonesia, Thailand, Phillipines, Europe and the United States. Many of JMP Golf Design Group's projects have received international acclaim within the golf industry.

Robert T. Hughes (BLA '77) and Brad Good (BLA '78) are partners in the firm of Hughes, Good, O'Leary & Ryan, Inc. of Atlanta, Georgia, which specializes in Landscape Architecture, Planning, Urban Design, and Environmental Assessment. Richard Mandell (BLA '90) is principal of Whole in One Design Group in Atlanta. Ben Page (BLA '73) principal, Ben Page &

Associates in Nashville, Tennessee, is working with the Vice President's Residence Foundation in implementing a major grounds restoration at the home of Vice President Al Gore in Washington, D.C. Rick Pariani (BLA '77) was recently made Principal by EDAW, Atlanta.

Alan Platovsky (BLA '71) is with the LA General Service of the City of New York.

Wayne S. Provost (BLA '80) is serving as the Planning Director of the Oconee County Planning Department in Watkinsville, Georgia.

Rex Lee Schuder (BLA '81) is a Senior Community Services Planner with the Gwinnett County Department of Human Services, Parks & Recreation Division in Lawrenceville, Georgia.

Jay Scott (BLA '75) returned to Georgia last year to join Roy Ashley & Associates in Atlanta. Clay Stafford (BLA '90) is working with CRSS Architects, Inc. of Atlanta, Georgia.

MLA ALUMNI

John A. Broadbooks (MLA '69) operates his own firm in Asheville, North Carolina, as a Landscape Architect/Planner. Gwen Cook (MLA '83) opened her own firm in June 1994 and continues to work as a design consultant for the FWA Group of Charlotte, North Carolina. Additionally, she was recently honored with Presbyterian College's Outstanding Young Alumna Award "for early competence with the chosen field of endeavor and exceptional promise of future achievement."

David H. Copps (MLA '90) recently published Views from the Road: A Community Guide for Assessing Rural Historic Landscapes, a project of the Trust for Public Land and the National Trust for Historic Preservation.

Jim Cothran (MLA '68) is author of the recently-released book Gardens of Historic Charleston, published by the University of South Carolina press.

Marianne Cramer (MLA '77) serves as Deputy Administrator of Planning for Central Park in New York City. Dale Jaeger (MLA '81) heads The Jaeger Company, in Gainesville, Georgia, which specializes in Landscape Architecture, Historic Preservation, and Planning. Douglas Wherle (BLA '78/MLA '82) is a Senior Project Manager with the New York State Urban Development Corporation. Additionally, he serves as an independent consultant with Environmental Design Services, specializing in waterfront development pedestrian access.

MHP ALUMNI

Julian Adams (MHP '86) after seven years with the SHPO of New York State, has recently taken a position with the Historic Natchez Foundation in Natchez, Mississippi.

Todd Cleveland (MHP '88) has left Kise, Franks, and Straw of Philadelphia to take a new position with Garrow Associates in Atlanta. David Cullison (MHP '94) is employed at the Southeast Regional Office of the National Park Service in Atlanta, Georgia.

Jorene Martin (MHP '94) has been hired as the Preservation Planner at the Georgia Mountains Regional Development Center in Gainesville, Georgia.

Amy Masterman (MHP '95) has been asked to make a presentation at the National Trust meeting in Fort Worth on

her thesis topic, the impact of filmmaking on cultural resources.

Michelle Michael (MHP '94) has been hired by Preservation North Carolina to assist in coordination of their revolving fund.

Michelle Sebree (MHP '91) is working with the National Trust in Great Britain.

Jeanne Strong (MHP '89) has recently returned to Georgia from Maine as a result of her husband's promotion within his company, headquartered in Gainesville. They have purchased a home in Athens.

Michelle Tarpley (MHP '95) is living in Minnesota with her husband and working for the preservation consulting firm 106 Associates. Greta Terrell (MHP '91) has joined the Georgia Trust for Historic Preservation as Executive Assistant to Greg Paxton and Bill Parish.

Cathleen Turner (MHP '93) has moved from her job as Preservation Planner at the Georgia Mountains Regional Development Center to a position as Executive Director of Historic Hillsborough, North Carolina.

Julie Turner (MHP '90) is on sabbatical from work to write a novel. Maurice Ungaro (MHP '94) is in Beaufort, S.C. where he is a planner with Beaufort County. Burke Walker (MHP '94) is the Preservation Planner at the Northeast Georgia Regional Development Center in Athens.

Kip Wright (MHP '91) reviewed Section 106 procedures of the National Historic Preservation Act, especially as they relate to the work of Landscape Architecture and preservation professionals at last spring's Alumni Weekend.

Do you have information or news you would like to share?
Do you have comments or suggestions for future newsletters?
Please stay in touch with the School of Environmental Design.

RETURN TO:

SED NEWS, School of Environmental Design, The University of Georgia
609 Caldwell Hall, Athens, GA 30602-1845

Information or news you would like to share or suggestions for future newsletters

Name _____ degree/date _____

Home address and phone _____

Firm name _____

Type of organization _____

Occupation and title _____

Responsibilities _____

ARTWORK BY WILLIAM BEERY

NOTE CARDS

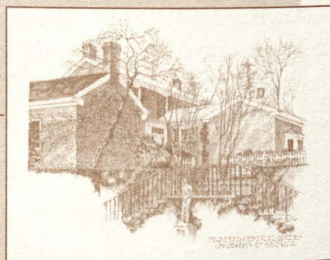
Price: \$6 for set of 10

PRINTS

17" x 14"

Price: \$25 each

Mail orders to
SED News
School of Environmental Design
609 Caldwell Hall
University of Georgia
Athens, GA 30602-1845
or call 706-542-4776



Student News

Call for Entries, *Georgia Landscape* 1996

Since 1979, *Georgia Landscape* has been the student journal of the SED. Master of Landscape Architecture and Historic Preservation students have edited and contributed written and graphic material to the journal. This year, the journal expand-

ed to seek submissions from graduate and undergraduate students in landscape architecture, historic preservation and closely related fields from around the world. *Georgia Landscape* 1995 "Textonic Drift" hopes to open discourse between the student and academic/professional communities through its established circulation.

The SED is now accepting entries for the 1996 issue. The theme for next year's *Georgia Landscape* is Normalady. Normalady suggests a pathology in the tendency to define people, behavior, language and places in terms of their adherence to or deviance from norms. What isn't normal? The segregation of reality into that which is or isn't normal excludes, isolates and institutionalizes that which lies outside the so-called normal. Do we, as students and practitioners of landscape architecture and historic preservation, design of the normal, by the normal and for the normal? What is a normal landscape? Unquestioned, the normal deafens us to difference and creative dialogue liber-

ated at the margins. Within the margins of our journal, we offer *Georgia Landscape* as a site for the critique of the normal and for the resuscitation of the vital exchange at, between, beyond, amongst, around, through, over, under, within, on, and above the peripheries of our disciplines.

The 1996 issue of *Georgia Landscape* may again break new ground with plans to publish as an electronic journal on the World Wide Web. Hard copies will still be available by pulling copies off the Web but the hope is that this may begin a school trend toward interactive and community-building intellectual inquiry. ■

1995 GEORGIA LANDSCAPE NOW AVAILABLE

The 1995 issue of *Georgia Landscape* has gone national with papers published from the east to the west coast. Because of the new national and international nature of *Georgia Landscape*, demand is great while publication is limited. If you would like a copy of the 1995 *Georgia Landscape*, call the School at 706-542-1816 or write:

Georgia Landscape
School of Environmental
Design
609 Caldwell Hall
University of Georgia
Athens, GA 30602-1845

STUDENT HONORS

ASLA 1995 STUDENT AND PROFESSIONAL AWARDS

First Place Nancy L. Conrad	Third Place Kenneth C. Haines
Second Place Scott Andreasen	Honorable Mention Nancy L. Conrad
Honorable Mention Oconee River Greenway Heritage Trail	

1994/1995 ASLA CERTIFICATE OF HONOR AND CERTIFICATE OF MERIT

UNDERGRADUATE Honor	GRADUATE Honor
Kenneth C. Haines Meilin Ehlke	Karen A. Jablonski
Merit	Merit
Julia F. Hinkle Mark Wilson R. Judson Hall Robert P. Westmore	Joseph J. Lazorchak Alan E. Spell Ying Wang

1995 ARTHUR ASHE JR. AWARD FOR ACADEMIC ACHIEVEMENT

Joseph J. Pressley

MHP FIRST HONOR GRADUATES

Jennifer Brown
Wendy Price

1995 UGA HONOR STUDENTS

Freshmen	Juniors
Jeffrey F. Baxter Marney C. Griffin	Chad Baker Yuki Miawa Robert B. Parker
Sophomores	Seniors
Deborah Lorraine Hudson Emily R. Irvin Jennifer M. Price	Nancy L. Conrad John W. Eubanks Kenneth C. Haines Joshua H. Koons Lynn McLendon Jennifer A. Stanley

OUTSTANDING TEACHING ASSISTANT AWARD 1995

Cari Lyn Goetcheus Karen A. Jablonski

GAMMA SIGMA DELTA

Joseph J. Pressley Nancy L. Conrad

1995 - 1996 GRADUATE ASSISTANTS

FALL

Dina El-Mogazi • Rajesh George • Tom Reynolds • Kevin Risk • Jeff Squier • Corrine Blencoe • John Brewster • Beth Brock • Jenny Buerkert • Mark Chancellor • Andrea Gregor • Susan Hitchcock • Kris Larson • Christine Magnarella • Katherine Malone • Scott Messer • Diana Miles • Teri Nye • Gayle Shelden • Dave Tuch • Doug Woods • Jay Womack

WINTER

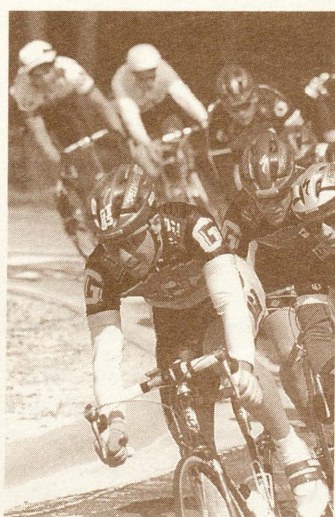
Dina El-Mogazi • Rajesh George • Tom Reynolds • Kevin Risk • Jeff Squier • Jenny Buerkert • Kris Larson • Margaret Callister • Tres Fromme • Andrea Gregor • Jimmie Lynn Harrison • Jenny Hoffner • Sheila Koehler • Gail Miller • Teri Nye • Pam Stoddard • Laura Straehla • Sean Styles • Jay Womack

SPRING

Rajesh George • Tom Reynolds • Kevin Risk • Jeff Squier • Elizabeth Barker • Dana Blizzard • Jim Connelly • Kelly Cronkright • Nicole Diehlman • Stephanie Foell • Mike Jones • Kris Larson • Diana Miles • Teri Nye • Gayle Shelden • Dave Spooner • Marcus Watson

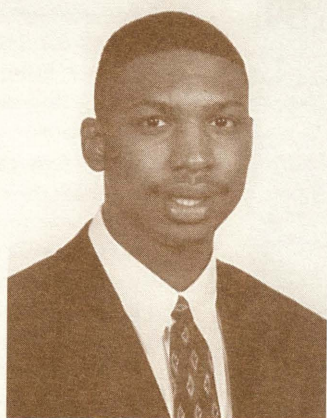
Student News

NOTES



Mark Heeb (MHP '95)

Mark Heeb, MHP candidate ('95), is pictured at the front of the pack during the 1993 NCAA National Championships for intercollegiate cycling. The University of Georgia team was the national champion that year. Jason Anderson, editor of the U.S. Cycling Federation's Cycling USA, recently described Athens, as "the Boulder, Colorado of the East" because of the local terrain and the presence in Athens of two of the nation's eleven professional cycling teams. In 1994, Heeb joined the Athens Bandag/Kelly Tires Professional Cycling Team. In 1995 he switched to the Motorola Paggers Professional Cycling Team. His coursework for the Master of Historic Preservation degree completed, Mark is finishing his thesis. He received his B.S. in Landscape Architecture from Penn State. Mark is currently the Housing Preservation Program Coordinator for the private, non-profit Action, Inc. in Athens.



Joe Pressley

Joe Pressley, (BLA candidate) recently received an Arthur Ashe Award. Given to "evoke standards of intellectual and athletic excellence that transcend boundaries and time," twenty-two awards were presented nationwide this year to NCAA Division I Football Athletes.

Of all the players awarded nation-wide, the three Southeastern Conference players, and the single UGA player awarded, only two others had a higher grade point average than Joe during last fall's national football season.

GSO - SPONSORED LECTURE SERIES

The Graduate Student Association (GSO) sponsored "Dish, Dirt, Design: The Faculty Lunch Series," a presentation of lectures by SED faculty. Faculty were given the opportunity to share their research and work with students, serving as catalysts



LABASH '95

Students returned from LABASH '95 claiming a very successful trip. LABASH is the annual gathering of landscape architecture students. The SED had 45 undergraduate & graduate students attend this year, and won the award for the largest group from any school. Six hundred students total from schools primarily throughout the United States and Canada attended. UGA also won awards for longest drive and second place for the most school spirit.

Students attended key note addresses and lectures on the community, new urbanism, graphics, environmental assessment, ecosystems, model techniques, computers, sustainable community design, and design competitions. In addition to the lectures, LABASH provided the opportunity to meet other students and view their work and techniques.

LABASH '96 will be held at Ball State University in Indiana and LABASH '97 will be held at the University of Arkansas. ■

for exchanging ideas within the School. This past spring, the series included lectures by Professors Richard Westmacott, Mary Anne Alabanza-Akers and Catherine Howett.

STUDENT HISTORIC PRESERVATION ORGANIZATION (SHPO)

SHPO has had a busy year sponsoring lectures, social gatherings, and a renewed sense of purpose and advocacy. A newsletter was initiated and two issues were distributed. An internship workshop was held for the benefit of first-year students. In lieu of the traditional tee-shirt design contest for National Historic Preservation Week, a coffee mug design competition was held. The winning design, submitted by Joanne DeJausserand, features an Ionic column motif and "University of Georgia-School of Environmental Design" in black on a white background. A self-guided Walking Tour from the Chapel to Founders Memorial Garden was developed along with a tour brochure as a part of the School's National Historic Preservation Week observance. The climax of a busy year was the effort to

save the yellow barn on College Station Road from demolition. Despite gathering over 1600 petition signatures in two days, numerous letters to editors, and personal visits with administration officials, the effort to save a symbol of the University's past failed. In the process, however, SHPO increased its visibility on campus and won first prize for booth design in a Chili Cookoff as well as second prize for the best chili. A final project was the mothballing of Christian College's Wray-Nicholson House, which was threatened with demolition May 1994, to protect it while awaiting initiation of its rehabilitation under funding from the Athens-Clarke County Unified Government.

SO IT IS... SED '95

Over 100 entries were received for the 1995 SED student exhibition on display through July 28 at the H.B. Owens Resource Center. The theme of the show was the multiplicity of visual languages that designers and historic preservationists employ through creative media to explore and communicate ideas. Jurors for the show were Professors Pratt Cassity, Claudia Levy, and Julie Myers. Entries were evaluated for expression of

creative processes of environmental design thinking and exploration, a strong concept, creative intent, narrative success, visual interest, technical execution, and readability.

Of the work submitted, 30 projects from 18 artists were accepted. These included marker and colored pencil renderings, ink on mylar, photography, sculpture, metal work, oil painting, water color, mixed media, and computer manipulated images.

SIGMA PI KAPPA INDUCTS NEW MEMBERS

As a part of the School's National Historic Preservation Week observance, UGA's Alpha Chapter of Sigma Pi Kappa, the nation's only historic preservation honor society, inducted twelve student members and two honorary members at its fifth initiation ceremony held in Demosthenian Hall (pg. 13). This year's initiation was a joint ceremony with Beta Chapter of Georgia State University's Heritage Preservation Program. A special feature of the ceremony was the presentation of a new banner for the Honor Society featuring the Society's colors of purple,

gold, and white. The two MHP students responsible for creating the banner, Joanne DeJausserand and Jane Tarlov, were present and given recognition. Following the ceremony, a photograph of Alpha Chapter's new members, with officers Waters, Cassity, and Malone, was made on the steps of the Chapel.

ENTERING MLA STUDENTS 1995

Don Alvarez
MS, Physics,
Central Missouri State Univ.

Bryan Bowers
BA, Fine Arts,
Vanderbilt University

Shannon Cathey
BUP, Urban Planning,
Univ. Of Cincinnati

Alex Cock
BLA, Landscape Architecture,
NC State Univ.

Daniel Deveney
BBA, Accounting,
Abilene Christian Univ.

Todd Downey
BA, History,
NC State University

Randa El-Hajje
BS, Agriculture,
American Univ. Of Beirut

Elizabeth Franz
BS, Fashion Merchandising,
Ohio University

Rajesh George
BARCH, Architecture,
University of Kerala

Jolie Kaytes
BS, Conservation and
Resources Study,
University Of California
Berkeley

Paige LaBorde
BA, Psychology,
Emory University

Cameron Little
BA, Philosophy,
Pomona College

Shannon Loucks
BA, Anthropology,
University Of Missouri

Elizabeth Midgley
BA, Psychology,
University Of Richmond

Glenn Richardson
BFA, Virginia Commonwealth
University

Robert Vick
BS, Psychology,
University Of Illinois

Susan Woodruff
BS, Biology,
Mercer University

Doug Woods
MURP, Urban & Regional
Planning,
George Washington

David Zaparanick
BS, Horticultural Science,
NC State University



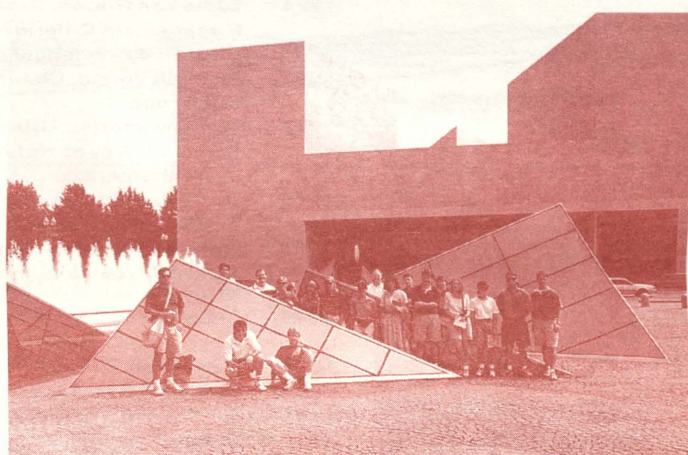
1995 Sigma Pi Kappa initiates pose on the steps of the UGA Chapel with two honorary members, Professor Jan Hardy and President Charles Knapp, and officers Connie Malone, Pratt Cassity, and John Waters.



Awaiting barbeque at the Garden



MHP Director John Waters presented Honorary Sigma Pi Kappa (Historic Preservation) memberships to Professor Jan Hardy of Georgia College (Above) and President Charles Knapp of the University of Georgia.



Students on the 1994 East Coast Field Trip poised on the brick of the East Wing of the National Gallery in Washington, D.C.

ENTERING MHP STUDENTS 1995

Glen Bennett
Pol. Science/Univ. of FL.

Cherie Blizzard
History/Mercer University

Susan Boatright
History/Univ. of Ga.

Gretchen Brock
English/Univ. of Ga.

John Cannan
History/Villanova

Helen Carter
Fine Arts/William & Mary

Alan Durham
History/Univ. of Ga.

Karri Jurgens
History/William & Mary

Erik Lokken
History/Principia College

Gail Miller
Art History/Univ. of Calif.

Ryan Moore
History/Southern Ill. Univ.

Amy Phillips
Anthropology/James Madison

Autumn Rierson
Pol. Science/Univ. of N.C.

Chase Robertson
French/Millsaps College

Allison Slocum
History/North Ga. College

Pam Stoddard
Management/Univ. of Florida

Laura Straehla
Pol. Science/Univ. Central FL

Amanda Wilbur
Art History/Michigan State

1995 - 1996 STUDENT ORGANIZATION OFFICERS

G S O

President
David Spooner

Vice President
David Tuch

Secretary
Beth Brock

Treasurer
Christine Magnarella

Public Relations
John Brewster
Teri Nye

G S L A

President
Grant Wilbanks

Vice President
Shannon MacDonald

Secretary
Janet Reid

Treasurer
Todd Downey

S H P O

President
Peggy Callister

Vice President
Holly Anderson

Secretary
Jenny Buerkert

Treasurer
Diana Miles

Research News

STUDENT THESES, PROJECTS, AND PUBLISHED RESEARCH

MLA THESES

- 1994 Jeff Fahs, Paseo De Amistad: The Application of a Culturally Sensitive Design Method to Del Rio, Texas.
- 1994 Mary Hughes Frye, Management of Vegetation Along the Appalachian Trail in High Country of the Mt. Rogers National Recreation Area.
- 1994 Tamara Graham, The Representation of Stormwater Management in Design; Toward an Ecological Aesthetic.
- 1994 William Drew Lucas, Reestablishment of Dynamic Equilibrium in an Urban Stream.
- 1994 Buck Pittman, Environmental Improvement of Urban Surfaces.
- 1994 Ruth Rockaway, Garden Designs for the Elderly: A Guide to Designing Successful Outdoor Landscapes.
- 1994 Don Staley, The Cultural Landscape of Preaching Rock Wildlife Center.
- 1994 Eddie Van Giesen, Designing Restoration and Management Criteria for Mature Piedmont Forests: Case Study - Remnant Forest on UGA Campus
- 1994 Amitabh Verma, Chandigarh: Reinventing the Landscape
- 1995 Tim Bemisderfer, Using Abandoned Rural Railroad Rights-of-Way as Nature Conservation and Linear Recreation Areas.
- 1995 Leslie Costa, A Conceptual Model for the Integration of Environmental Education into Urban Communities.
- 1995 Anne Henley, Woodland Theater as a Medium for Cultural Transformation: A Prototype for Stringer's Ridge Chattanooga, Tennessee.
- 1995 Brian Morris, The Historic Landscape, Stuart's Hill Tract, Manassas National Battlefield Park.
- 1995 Molly Pike, Oconee Rivers Greenway: The State Botanical Garden of Georgia Connection.
- 1995 Ron Sawhill, the Potential Use of Biosolids in Wetlands Creation.
- 1995 Ying Wang, Reification of Main Street USA, as Shown in Design of Main Street in Augusta, Georgia.

MHP THESES

- 1994 Hugh Goodman, Role of The Builder-Architect in the Domestic Architecture of John McComb, Jr.
- 1994 Kelly Glasgow Griffin, A Study of The Development and Regional Influence of The Greek Revival Period of Architecture in Mississippi with Interpretative Planning Guides for its Interiors.
- 1994 Denise Larimore, Let the Stones Speak: Interpreting Civil War Monuments at Chickamauga and Chattanooga National Military Park.
- 1994 Lili Hardison, Coca-Cola Bottling Plants: Survey, Preservation Strategy, and Standardized Building Codes.
- 1994 Bryan Townes, The Adaptive Use of Abandoned Turn-of-the-Century Schools in Small Georgia Communities.
- 1994 Maurice Ungaro, Rehabilitating Historic Hotels
- 1994 Burke Walker, Georgia's Carnegie Libraries: A Study of Their History, Existing Conditions, and Conservation.
- 1994 Joan Janicki, Preserving Historic Resources in New Subdivision Development: Promising Developments in the Maryland Suburbs.
- 1994 Michelle Michael, The Rise of the Regional Architect in North Carolina as Seen Through the Manufacturers' Record, 1890-1910.
- 1995 Jorene Martin, Self-Guided Resource Materials in Heritage Education Programs.
- 1995 David Cullison, J. W. Barnett: The Influence of The Architect And City Engineer on the Physical Development of Athens, Georgia, 1889-1930.
- 1995 Martha Evans Wiley, The Interpretation of Abandoned Rural Communities Within the National Park Service.
- 1995 Kathryn Franks, Enka, North Carolina: New Planning in an Early Twentieth Century Southern Mill Town.
- 1995 Laurel Davis, Effective Fundraising for Historic House Museums.
- 1995 Amy Masterman, on Location in North Carolina: The Use of Cultural Resources in Filmmaking.
- 1995 Michelle Tarpley, Preserving Main Street Downtown Commercial Structures Through Use as Residential Properties

FUNDED RESEARCH PROJECTS

Outside sources funded the following research projects for MLA students.

- 1994-95 Barry Jeffries, (Darrel Morrison, P.I.), Design of an Arboretum for Georgia Mountain Branch Station, Blairsville, Georgia, for Cooperative Extension Service and Tennessee Valley Authority. 1994-95

Jennifer Hoffner (Richard Westmacott, P.I.), Managing Agriculture in Historic Battlegrounds, for National Park Service.

- 1994-95 Joe Lazorchak, (Darrel Morrison, P.I.), Plan for the National Environmentally Sustainable Production Agriculture Research Center, Tifton, Georgia, for U.S. Department of Agriculture.
- 1994-95 Karin Kolnes, (Pratt Cassity, P.I.), Americans with Disabilities Act, for National Trust for Historic Preservation.
- 1995 Alan Spell (Bruce Ferguson, P.I.), Landscape Assessment for Oshima Island, Japan, for Oshima Island Conservancy.
- 1995 Katherine Schuur (Leo Alvarez, P.I.), Plan for Savannah River Ecology Lab, for U.S. Department of Energy.

STUDIO CLASS PROJECTS

Some or all of the following studio projects were funded by outside sources.

- 1994-95 LAR 315 (Leo Alvarez and Cheryl Mihalko), Stone Mountain Land Plan, for City of Stone Mountain, Georgia.
- 1995 LAR 723 (Bruce Ferguson), Resource Inventory and Land Use Potential, Broad River, North Carolina, for Cleveland Tomorrow. 14 students.
- 1995 LAR 316 (Allen Stovall) who conducted a funded master plan expansion study for the Hambidge (Arts) Center on their 600 acre site in Rabun County, Georgia.

PUBLISHED & PRESENTED RESEARCH

The following are publications and presentations of student work, authored or co-authored by the students, academic year 1994-95.

- 1994 Gayle Shelden and Tres Fromme, An Activity Booklet for the Exhibit African-American Gardens and Yards in the Rural South, for Southern Arts Federation, Atlanta, Ga.
- 1995 Drew Lucas, "Establishing Dynamic Equilibrium in an Urban Stream," pages 264-267 of Proceedings of the 1995 Georgia Water Resources Conference, Kathryn J. Hatcher, editor, Athens: University of Georgia Institute of Government.
- 1995 Mary Hughes Frye, "Management of Vegetation Along the Appalachian Trail in High Country of the Mt. Rogers National Recreation Area," presented to Recreation Conference of the U.S. Forest Service.
- 1995 Ron Sawhill, "A Potential Use of Municipal Sewage Sludge in Wetlands Creation," presented to 16th Annual Meeting of Society of Wetland Scientists, Boston, Mass., May 28-June 2, 1995.
- 1995 Tamara Graham Calabria, "The Representation of Stormwater Management in Design: Toward an Ecological Aesthetic," pages 132-135 of Proceedings of the 1995 Georgia Water Resources Conference, Kathryn J. Hatcher, editor, Athens: UGA Institute of Government.
- 1995 Tres Fromme, "S(t)imulate Me: A Loose Manifesto," UnderCurrents, Journal of Critical Environmental Studies vol. 7, p. 15.
- In press Forster Ndubisi, Terry DeMeo and Neils Ditto, "Environmentally Sensitive Areas: A Template for Developing Greenway Corridors," Landscape and Urban Planning June-July 1995.
- In press Forster Ndubisi and Terry DeMeo (with assistance from Neils Ditto and Doris Wehlau), "Directing Change in the Landscape: Guiding Development on Sensitive Lands," Athens: University of Georgia Institute of Community and Area Development and School of Environmental Design.
- In press Dina El-Mogazi, "Can High Art and Good Science Coexist in Contemporary Landscape Architecture?," Georgia Landscape 1995 pages 6-10.
- In press Gayle Shelden, "Unzipping the Crusted Soil," Georgia Landscape 1995, pages 18-22.
- In press Jennifer Hoffner, "The University of Georgia Quadrangle," Georgia Landscape 1995, page 17.
- In press Michael Jones, "South Quadrangle of the University of Georgia," Georgia Landscape 1995, page 11.
- In press Tres Fromme, "Facing the Corp(se)us Necrophilic Transvestitism," Georgia Landscape 1995, page 27.

RECENT FACULTY PUBLICATIONS

Akers, Mary Anne. Educational and Training Needs of Welfare Recipients (PEACH Participants) A Research Report. Institute of Community and Area Development and the Local Coordinating Council of the PEACH Program, University of Georgia. 1994.

Alvarez, Leonardo and Joseph Ford, eds. Places in Time: Historic Architecture and Landscapes of Miami. FIU School of Design, Miami, Florida. 1994.

Alvarez, Leonardo. "The Nature of Fractals and the Culture of Euclidean Form," in Ecology, Aesthetics, and Design. American Society of Landscape Architects, p. 31-40, October 1994.

Alvarez, Leonardo. "Restoring the Liberty Hyde Bailey Palm Glade." Fairchild Tropical Garden News. Nicholas Cockshutte, ed. Miami: Fairchild Tropical Garden, April 1994.

Cassity, Pratt and Lisa Vogel. Reinventing the Certified Local Government Program. National Alliance of Preservation Commissions and the National Park Service. October 1994.

Cassity, Pratt and Connie Malone. The United States Preservation Commission Identification Project. National Trust for Historic Preservation, National Alliance of Preservation Commissions, and the National Park Service. August 1994.

Dawson, Kerry and Don Staley. Land-Use Plan for Preaching Rock Wildlife Center. Georgia Department of Natural Resources, Atlanta, Georgia, 33 pages. 1994.

Dawson, Kerry and S.E. Greco. "The Visual Ecology of Prescribed Fire at Sequoia National Park." Giant Sequoias: Their Place in the Ecosystem and Society. USDA Forest Service, Georgia Technical Report PSW-GTR-151, P. 99-108. 1994.

Ferguson, Bruce. Stormwater Infiltration. Lewis Publishers, Chelsea. 269 pages. 1994.

Ferguson, Bruce. "The Concept of Landscape Health." In Journal of Environmental Management. 40:2 (1994), pp. 129-137.

Ferguson, Bruce and Tamas Deak. "The Role of Urban Storm Flow Volume in Local Drainage Problems." In Journal of Water Resources Planning and Management. 120:4 (1994), PP. 523-530.

Ferguson, Bruce. "A Reevaluation of Minimum Slope Standards." In History and Culture, Conference Proceedings, CELA 94. Edited by James D. Clark. Washington: Landscape Architecture Foundation and Council of Educators in Landscape Architecture, pp. 108-115. 1994.

Firth, Ian. "Sustainable Conservation" In Water in the Historic Landscape, Proceedings of the 8th Annual Historic Landscape Symposium. Edited by Elizabeth Brabec. American

Society of Landscape Architects, San Antonio. 1994.

Firth, Ian. "Middleton Place Hosts Alliance for Historic Landscape Preservation." In Magnolia, Bulletin of the Southern Garden History Society.

Howett, Catherine "Integrity as a Value in Cultural Landscape Preservation." In Preserving Cultural Landscape in America. Edited by Arnold Alanen and Robert Z. Melnick. Baltimore: Johns Hopkins University Press. 1994.

Howett, Catherine. "Interpreting a Painful Past: Birmingham's Kelly Ingram Park." In Cultural Resources Management Journal of the National Park Service. 17:7, pp. 38-40.

Howett, Catherine. "Cultural Landscape Preservation: Balancing the Science/Art Equation." In Newsletter of the Alliance of Historic Landscape Preservation. pp. 2-3. Fall 1994.

Mann, William. "Edgar Allen Poe and the Landscape Garden Movement: the Movement's Influences on Poe and His Influences on the Movement." In Proceedings of the Council of Educators in Landscape Architecture Annual Meeting, 1994. Mississippi State University, Starkville, Mississippi. pp. 200-213. 1994.

Ndubisi, Forster. "Landscape Ecological Planning." In Ecological Design and Planning. Edited by F. Steiner and G. Thompson. Johns Hopkins University Press, Baltimore. Forthcoming, Summer 1996.

Campbell, D. and F. Ndubisi. "Collaboration in East Athens: A Model." In Planning. 60:1, pp. 19-23. 1994.

Nichols, David. "Effects of Cultural Levels on the Appearance of Open Celled Pavements." Proceedings of the 1994 Southern Nurserymen's Association 39th Annual Research Conference. Edited by Bryson L. James. 1994.

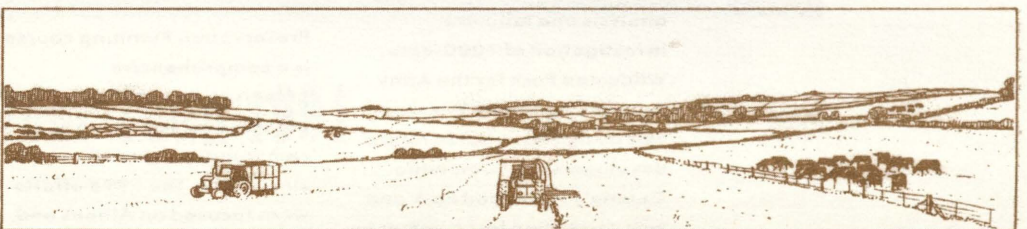
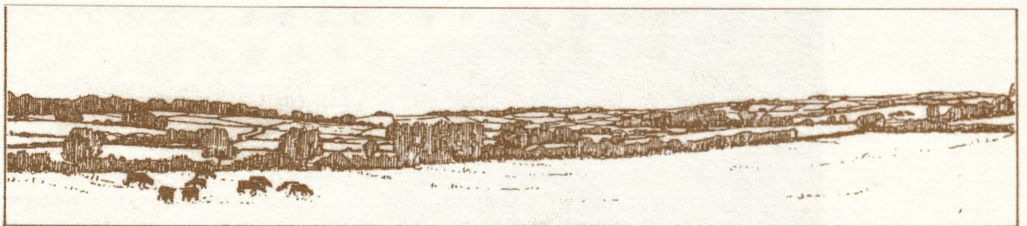
Waters, John. "Sigma Pi Kappa: International Honor Society for Historic Preservation." In National Council for Preservation Education News. 1:2, Summer 1994.

Weinberg, Scott. "The Standard Moves On, Autocad for Windows." In Landscape Architect and Specifier News. pp. 20-21. March 1994.

Weinberg, Scott. "Landscape Design." Professional Focus Sourcebook. Autodesk University, Miller Freeman, Inc. pp. 237-244. October 1994.

Westmacott, Richard. "Yards and Gardens of African-Americans as Vernacular Art." In Southern Quarterly. 32:4, pp. 45-63. Summer 1994.

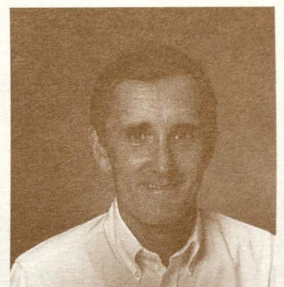
Westmacott, Richard. "African American Gardens and Yards: A Southern Tradition." In African-American Visions: A Celebration. University of Hawaii. 1994.



Research Profile

Richard Westmacott has recently completed the third phase on an on going survey of the impact of changes in agriculture on the English countryside. The New Agricultural Landscapes study was begun in 1972 when seven farmed landscapes, each representing a different farming system, were selected for study. It was found that sweeping changes had already occurred in some areas and were continuing, mostly due to a switch from mixed rotational farming to highly specialized systems. Hedges, hedgerow trees, ponds, small woodland and other valuable habitat were being lost rapidly as were many prehistoric fields monuments, historic farm buildings and field boundaries. In 1983 (eleven years later) the same areas were resurveyed. It was found that although the pace of change had slowed, piecemeal changes continued on a farm by farm basis, mostly as a result of change of ownership and enterprise. In the summer of 1994, the areas were surveyed for a third time. It was found that farmers are increasingly subject to frequent changes in political and economic circumstances which does not foster long term conservation of the countryside.

Richard is also studying culturally significant agricultural landscapes in the United States on behalf of the National Park Service (Cultural Landscape Program - Park Historic Architecture Division). Thirty units of the national park system which contain agriculture were selected for study of appropriate management strategies. A wide range of cultural significance is represented by these parks, including prehistoric irrigated landscapes, early ranching systems, pioneer upland farming, and many sites associated with an historic event (battlefields from both the Revolutionary and Civil Wars!) or a notable person associated with agricultural history. Sites also include ethnographic and vernacular landscapes. The first phase of the study is nearing completion and the second phase which involves producing a management handbook and testing this in three parks which will be completed in December 1996. ■



Research/Service News

FACULTY DIRECTED CREATIVE AND SERVICE PROJECTS

■ Darrel Morrison and Richard Westmacott are advising the Oglethorpe County Middle School on the design of a small Nature Reserve. Westmacott participated in the Roswells Living Places Workshop held on May 6, 1995.

■ Bruce Ferguson's Environmental Analysis class (spring 1994) conducted a site analysis and land use investigation of 1000-acre Wildwood Park for the Army Corp of Engineers. The study was designed to guide future development of Columbia County's Wildwood Park and was conducted last summer by four SED students. Each team was asked to present a design for potential land development. Proposals

became a natural area over 50 years. Kerry and Don did the habitat modeling showing the progression of nature in ten year segments.

■ Roger Moore has consulted frequently on CADD computer applications with LandCadd, Applied Software Technologies, Leslie Design and the Jaeger Company.

■ Pratt Cassity's HP 705 Preservation Planning course is a comprehensive preservation vehicle that has provided assistance to communities annually since 1982. The 1995 efforts were focused on Athens and Monticello, in Georgia, and Abbeville in South Carolina. The results were three comprehensive studies of preservation issues and opportunities within the subject communities.

■ At the request of the Greensboro Chamber of Commerce, Cheryl Mihalko along with International Exchange student Elina Kataja completed a revitalization plan for city block in downtown Greensboro.

■ Several Hurricane Andrew

restoration projects for the Fairchild Tropical Garden (Miami) were completed by Leo Alvarez in 1994-95, including the Liberty Hyde Bailey Palm Glade and the Gate House Museum and entry court restoration.

■ In partnership with others, Gregg Coyle completed work on 15 residential, commercial, and botanical gardens between 1994 and 1995. Among the projects was the residence of Atlanta Braves player Terry Pendleton, an illumination plan for LaBelle Creole in St. Martin, French West Indies,

and a 50 acre arboretum and Botanical Master Plan for the Georgia National Fairground in Perry, GA.

■ John C. Waters' HP 772/Cultural Resource Assessment students participated in the intensive community surveys conducted as a part of HP 705. Students in his HP 706/Preservation Advocacy class were divided into two groups to research adaptive use potentials for the Wray-Nicholson House. The results of their studies were presented in terms of (1) local government use of the property, and (2) use of the property by private sector individuals.

■ At the request of the Sky Valley Georgia Garden Club, Leonardo Alvarez and Cheryl Mihalko, along with Ken Haines (BLA '95), completed a community park Master Plan featuring a fitness trail and a central pavilion.

■ Bruce Ferguson designed sediment and storm water control systems for industrial/commercial sites at Coggins park and Pinecrest.

■ Ian Firth and Richard Westmacott recently completed the restoration plan for the Stuart's Hill tract of Manassas National Battlefield.

■ Catherine Howett completed phase I of the design for Glen Terrell Friendship Hall and had a proposal accepted for the Holland Library Sculpture Garden at Washington State University.

■ Forster Ndubisi completed a strategic plan for the Athens-Clarke County enterprise community and, completed a visual corridor study for interstate 20 in Rockdale County.

■ MHP students are working on various service projects under the direction of Mark Reinberger. Some of them include:

Documentation, research, and stabilization study of structures in historic village of Scull Shoals in Oconee National Forest for the National Forest Service.

Documentation and architectural historical analysis of Terrell-Stone House in Sparta, GA. The building is on the National Register and is currently undergoing restoration.

Documentation and architectural historical analysis of Wray-Nicholson House, Athens, GA. Threatened with demolition, the house was made part of the Athens-Clarke county SPLOST package.

Studies of historic structures as part of HP 685, Building Materials Conservation, consisting primarily of an assessment of conditions and recommendations for conservation and restoration; guiding property owners on preservation and maintenance activities:

1. Log house on Richard Westmacott's property, Oglethorpe County.

2. Brick warehouse on Foundry Street, part of Civic Center project.

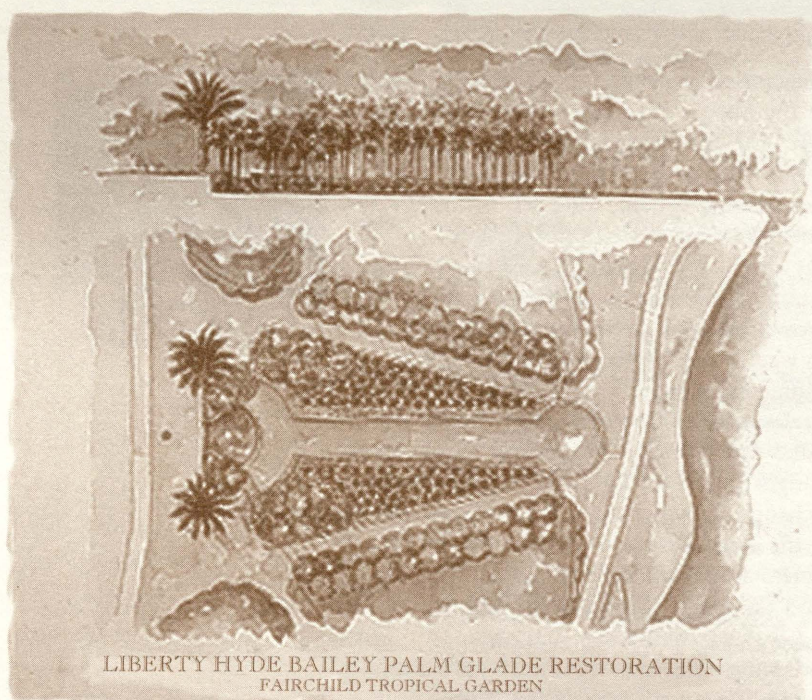
3. Hodgens-Lumpkin House, Oconee Street.

4. House at 1350 Spring Valley Road (one of the oldest and largest Gothic style residences in Athens-Clarke County).

5. Old section of Dekalb County Cemetery, Decatur, GA.

6. Schoolhouse, Shields-Ethridge Farm Historic Site, Arcade, GA.

Section 106 mitigation (large format photography and exhibit design and construction) for demolition of Marben Farm, Preaching Rock Wildlife Refuge, Jasper County, GA, a property of Georgia Department of Natural Resources.



LIBERTY HYDE BAILEY PALM GLADE RESTORATION
FAIRCHILD TROPICAL GARDEN

ranged from a low-impact recreation area to an elaborate resort with marinas and a golf course. The study's cost, estimated at \$500 to \$1,000, was paid by the U.S. Army Corps of Engineers, which owns the 900-acre park.

■ Kerry Dawson and Don Staley were members of the master planning team that completed a report on the future of the Preaching Rock Environmental Interpretive and Wildlife Management Area. The site was previously made up of two farms near Atlanta that will gradually

Service News

OPS Design Guidelines

Because strong design guidelines are essential for local historic preservation commissions to aid in protecting community character, SEDs Office of Preservation Services (OPS), is producing a model development process. The model aims to aid future planners in creating a usable set of design guidelines in a short amount of time without incurring great costs. The project is supported by Critical Issues Fund of the National Trust for Historic Preservation which addresses problems that face the historic preservation movement. The Fund supports projects that address questions suggested by the eight "Charleston Principles" developed in 1990 at the 44th National Preservation Conference.

Principle IV of the Charleston Principles states, "Demand excellence in design for new construction and in the stewardship of historic properties and places."

A symposium of design professionals familiar with historic resource issues, working from a model developed by Nore Winter of Boulder, Colorado, created a draft document titled Guiding History. OPS is currently conducting workshops with local preservation commissions to create design guidelines using this process. The workshops are attended by local planning staff, members of the community, staff of the State Historic Preservation Office, and OPS staff and volunteers.

With the help of the OPS, historic preservation student interns and graduate assistants, several communities in Georgia have tested the process. To date, the process has been used successfully to draft guidelines in Athens, Brunswick, Darien, Monticello, Thomasville, Fort Valley, Roswell and soon in Madison County and Americus. ■

ADA Project

SED faculty member Pratt Cassity, with assistance from MHP student Ken Kocher and MLA student Karin Kolnes, is conducting a project to aid interpretation of the Americans with Disabilities Act (ADA).

The Historic Preservation Commission Self-Study Accessibility Training Course is funded by the Department of Justice's ADA Technical Assistance Program. The Justice Department awarded a \$200,000 grant to the National Trust for Historic Preservation to direct the training course, and the National Trust has subcontracted with the SED to conduct a portion of the project.

The goal is to train local historic preservation commissions across the country to analyze access issues in historic buildings and find solutions that provide access without destroying the building's historic character.

The SEDs portion of the project involves a commission survey to determine local knowledge regarding ADA requirements, and how to administer them without damaging the integrity of the historic resources. Professor Cassity and Ken Kocher designed the survey and tabulated results from 487 commissions.

Primary survey findings indicate that very few commissions have complete knowledge of the ADA, or have received training dealing with accessibility issues, and yet the majority of commissions have been faced with accessibility or ADA issues in design review cases.

The project's next phase will be to develop a self-contained training course for use by commissions to heighten their understanding of the ADA. Professor Cassity, Ken Kocher, and Karin Kolnes have developed a syllabus for the self-study course. Once completed, the National Trust and another project partner — Historic Windsor, Inc. of Vermont — will produce the training kits. ■



Your Town 1994

With rural communities at risk of losing their identity, "Your Town: Designing Its Future", was developed as a three day participatory workshop to equip rural decision makers with the tools and judgement to make informed design decisions. Developed by the National Trust for Historic Preservation (NTHP) and the landscape architecture faculty at the State University of New York (SUNY)—Syracuse, the three day workshops are sponsored by the National Endowment for the Arts (NEA).

Held last November 30 through December 2, 1994, SED faculty Allen Stovall, Pratt Cassity, and Cheryl Mihalko served as faculty, delivered lectures and lead participants in small group sessions. Lisa Vogel, with assistance from SED graduate students Katry Harris, Ken Kocher, and Scott Messer, organized the workshop and project notebook with a grant from the National Trust.

The participants were divided into four groups and asked to solve the problems of "Your Town," Georgia, a hypothetical small, rural community of approximately 3,500 citizens located about 30 miles east of the perimeter of a major city of over 2,000,000. The town's position at the crossroads of an interstate and major state highway and its proximity to the ever-expanding city put "Your Town" in a position to expect substantial pressure from urban sprawl.

Thirty participants were selected from among 60 applicants and all were purposely chosen for their lack of a background in design or art. Personal experiences varied and the participant mix included Chamber of Commerce executives, bank presidents, mayors, county commissioners, tourism specialists, economic and small business developers, and community activists and volunteers. As the workshop progressed, participants became comfortable using pens, pencils, and markers, and enthusiastically embraced the graphic challenges. As Deeds Pierce of Ft. Gaines, Georgia, said, "At first, the material seemed overwhelming, but because of the specific experts and sessions, the material became manageable and was therefore more easily dealt with. The problems were applicable and realistic, and I felt, towards the end, more confident in my ability to address and solve them."

The workshop closed with a brief presentation of plans and ideas. SED Dean Dawson, Shelley Mastran of the National Trust, and Wendy Clark of the NEA served as guest jurors for the final presentations.

The SED is currently planning a second "Your Town: Designing Its Future," at Unicoi Lodge from December 4 through 6, 1995. ■

Service News

Cooperative Agreement Between the SHPO and SED

Changes in the state historic preservation office and at the SED have produced significant changes in one of SEDs statewide service programs. The Certified Local



SED gave a workshop last spring on computer-based photo simulation to Historic Preservation interests around the state. Pictured from left to right are Richard Cloues, of the Georgia Historic Preservation Division; Greg Paxton, Executive Director of the Georgia Trust for Historic Preservation; and Mark Edwards, the new Director of the Georgia Historic Preservation Division. Director Edwards came to Georgia after a successful career in the state preservation office in Maryland.

Government (CLG) program provides assistance to local historic preservation commissions in Georgia. This assistance is made possible through a contract between the SEDs Office of Preservation Services (OPS) and the state's Historic Preservation Division (HPD) at the Department of Natural Resources, which serves as the state historic preservation office.

The CLG program, which is federally mandated, funded and administered by the National Park Service, provides broad assistance in historic preservation planning and implementation to

42 certified governments. In addition, OPS and HPD guide 31 communities that, although they have adopted historic preservation ordinances, have not yet entered the CLG program.

In years past, the CLG program was administered by the OPS through a grant from the HPD; however, HPD formalized the relationship in 1994 by awarding a state contract instead. Other changes in the cooperative relationship between the OPS and the HPD have come about due to the work of Georgia's new state historic preservation officer, Mark Edwards. Mark, formerly deputy state historic preservation officer in Maryland, played a large role in local government assistance in that state and was instrumental in developing Maryland's CLG program.

The other major change to the CLG contract is the addition of Lisa Vogel, SEDs grants coordinator, to the OPS staff. Part of Lisa's job duties are to assist Pratt with the CLG program; thus, the OPS has been able to expand its service to Georgia's local historic preservation commissions.

The cooperative arrangement has been successful since its inception in 1984 because it benefits all parties involved: the SED benefits from the exposure

around the state and from the fact that the contract provides funding for graduate assistants, material for student projects and theses, and contacts for students seeking jobs; HPD benefits by efficiently using state funds and from the ability to tap into the resources of UGA. The greatest benefits, however, are realized by the 72 Georgia communities with historic preservation ordinances and the increasing number of Georgia communities that are contemplating development of a local historic preservation program. These cities, towns, and counties receive technical assistance and tailored guidance from the OPS—ranging from information about any and all historic preservation topics and issues, to training workshops, to a directory of all commissions in Georgia, to community presentations and facilitated workshops.

In providing local community assistance, the OPS enlists the help of many part-

ners: UGA's Institute for Community and Area Development, the Georgia Trust for Historic Preservation, the Georgia Main Street Program, and the regional preservation planners of the state's Regional Development Centers, to name a few. These and many other state agencies and organizations work with the OPS and HPD to provide training, information, and guidance to communities that endeavor to protect their quality of place through historic preservation.

A partnership such as this one between federal and state agencies, the University, and local governments is an ideal model for getting things done quickly, efficiently, and thoroughly. Other states have sought to create similar arrangements, as Georgia's leads the way. ■

LISA VOGEL, MHP '93

Your Town After the Flood

In the aftermath of the 1994 southwest Georgia floods, rural communities and small towns are working to recover and maintain a sense of identity. In July, the School of Environmental Design coordinated a specialized workshop in Americus, Georgia, to aid community leaders in these efforts.

Organized by SED grants coordinator Lisa Vogel, with assistance by MHP students Scott Messer and Jeff Squier, "Your Town After the Flood: Designing Your Recovery" was conducted by SED faculty members Leo Alvarez, Pratt Cassity, and Cheryl Mihalko; professor Allen Stovall also participated by presenting a lecture.

The SED and The National Trust worked together to tailor the workshop to participants from towns dealing with flood recovery. Like the regular Your Town workshop (see related story), "Your Town After the Flood," was a success. Workshop evaluations have been positive, calling the workshop "informative, challenging, and so much fun." One participant pointed out the value of the Your Town workshop with the following comment: "So many people, especially in small towns, need your help and expertise." The workshop was funded by a grant from the National Trust's Southern Regional Office in Charleston, South Carolina. ■

LARE WORKSHOP

The Georgia In-Depth Review Workshop for the Landscape Architecture Review Exam (LARE), co-sponsored by the Georgia Chapter ASLA and the SED, was offered November 4-5, 1994 at Caldwell Hall on the UGA campus. Instruction was provided by Ken Beall (BLA '82) and SED faculty member David Nichols.

Both the Grading and Drainage Workshop and the Integration of Technical and Design Requirements Workshop are designed to provide a real simulated experience. Plans are underway to offer both workshops again in November.

For information contact Neal Weatherly at 706-542-0943. ■

Development News

Recent Endowments and Gifts

Several new \$25,000 scholarship endowments were established during Fiscal Year 1995. Among them were the ERDAS Scholarship for GIS studies by Bruce Rado (BLA '71) and Lawrie Jordan (BLA '73), the Daniel B. Franklin Scholarship in Landscape Architecture by Friends of Dan Franklin (BLA '63) and the Robert Johnson Hill Scholarship in Landscape Architecture by Bob Hill (BLA '54, MLA '64). In addition, two tuition scholarship grants for the 95-96 school year were initiated. The Georgia Chapter ASLA is funding a \$2,550 undergraduate scholarship in Landscape Architecture and a \$2,500 graduate scholarship in Historic Preservation is being funded by the Marguerite Neel Williams Charitable Trust.

The SED continues to seek foundation and corporate support for endowments, as well as from individuals. Areas of opportunity include named program support funds, scholarships, travel fellowships, reading room/gallery funds, lectureships, and professorships. Your help in identifying parties who may be interested in supporting School programs through existing or newly-established endowments is appreciated.

In another important Development area, the 51st Annual Fund culminated on June 30, 1995 with \$50,311.00 in SED gifts from 393 donors. A special thanks to all of you! Of these, the number of Presidents Club donors annually contributing \$1,000 or more increased from eight in fiscal year 1994 to twenty one during the past year. These donors will be recognized among others, in the University's Honor Roll of Donors this fall. ■

ALLEN STOVALL, BLA '59

GIFTS RECEIVED

JULY 1, 1994 - JUNE 30, 1995

Presidents Club - Founding Members

Clay Adamson
Roy Ashley
Ringland (Rex) Bray
Elizabeth Haygood
Robert Hill
James Hudson
William
McDougald
Darrel Morrison
Charles Perry

Presidents Club -\$1,000 or above annually

Mrs. Justin
Campbell
Kerry Dawson
Georgia Chapter
ASLA
Charles Godfrey
Hughes, Good,
Ryan & O'Leary
Edah Grover
Robert & Dale
Jaeger
Lawrie Jordan
(ERDAS)
Randy Marshall
Southern Progress
Bruce Rado
(ERDAS)
Roy Reece
Jon Seymour
Liz Seymour
Deen Day Smith
Allen Stovall
Marguerite
Williams
Charitable Trust

Georgian Club (\$500 - \$999)

Clay Adamson
Roy Ashley
Vincent Bellafiore
Joseph Blount
Dr. & Mrs. Ellis
Jones
Don & Betsy
Leeburn
Mary Karwoski
Brad Good
Michael Redd

Charter Club (\$250 - \$499)

Thomas Appelt
Johnson
Architectural
Systems

Maudi Tripp
Bradford
Blakeslee
Nettleton Chase
Peter Cummin
Ruey Yuan Chen
Jon Davis
John DeMicco
William Edwards
Elkmont Associates
John Floyd
B. J. Godfrey
Classic
Groundcovers
John Hayes
Anna Meatshon
Barbara Koesjan
Harry Hansen
Gary Morgan
Pickey-Mangham
Company
Thomas Williams

Century Club (\$100 - \$249)

Virginia Adair
Thompson Agee
Nancy Beckemeyer
Norris Birchfield
Daniel Blich
Bowden Design
Group
John Bowen
Robert Campbell
Richard
Christenson
Rodney Cook
Benjamin
Copeland
Virginia Cromer
Douglas David
Mr. & Mrs. Robert
Delafchell
Mr. & Mrs. Dan
Donelin
Olga Duffey
Thomas Duggins
Joel Eliason
Phillip Ethridge
Bruce Ferguson
Dan Franklin
Sidney Gattis
Sylvia Gibson
Albert Goodgame
Will Goodman
Bruce Lewis
Carlos Greenway
Mr. & Mrs.
Thomas Haltom
Jane Hanes
Susan S. Harrison
Walter Harrison
Donald Hooten

Calvin Hopkins III
House Parts Inc.
Edward Inman II
Vaden Lackey III
Fred Leeker
Nimrod Long III
Lori Lucas
Robert Marvin
John McHale
Mr. & Mrs. Finley
Merry
William Monroe
David Nichols
Michael Olivieri
J.K. Orr
Benjamin Page Jr.
Frederick Pariani
Nell Paulk
Truitt Rabun
Mark Reinberger
Mark Robinson &
Associates
Mark Robinson
Marvin Sanders
Sanders Planning
Group
John Sell
Sasiya Siriboon
Kay Strom
Margot Taylor
Perry Thomas
Timothy Thoms
Mrs. Charles
Vandenbulck
Craig Van Dussen
Sr.
Neal Weatherly Jr.
Joseph Williams

Annual Fund \$25 - \$99

Julian Adams
Dexter Adams
Edward Alexander
Lynn Alford
Matthew Anacker
Virginia Andre
William Angelis
Ben Bankston
Alton Barnes Jr.
Naomi Bellor
Mr. & Mrs. James
Birch
Fred Blackley
Mr. & Mrs. H.
David Blackwell
Sybil Bowers
Delmar Bradshaw
Mr. & Mrs. Sims
Bray
Mr. & Mrs. Brooks
Breedon
Gary Brendle

Richard Brox
Mary Bryant
Heidi Brown
John Carpenter
David Carpenter
Edward Castro
David Childers
Thomas Clark
Christopher
Collins
Scott Chatham
Walter Coile
Gwendolyn Cook
James Cooper III
Philip Crawford Jr.
John Creswell
James Dash Jr.
William Davis
Todd Downey
Diane Dunaway
Eco-Plan South
Donald Elder
Frances Ellis
Jeff Fahs
Tamela Fields
Paul Fogelberg
GSLA
Greta Gallagher
Stephen Gang
John Gastley
James Givens
Mr. & Mrs. Mark
Godfrey
Byron Godwin III
Alberta Gowin
Ben Grace
Christopher Gray
Kerry Stroud
Green
Marsha Grizzle
Jeffrey Gwathney
Martin Haber
Mr. & Mrs. Stephen
Hajduk
David Hale
James Halpin
Mr. & Mrs.
Kenneth Haser
Karen Henriksen
Jo Hickson
Laura Highfill
Valerie Hinesley
Matthew Hoffman
Christopher
Hohlstein
Thomas
Holcombe
Annie Holland
John Howard Jr.
Catherine Howett
Avery Howell
Francis Iaconetti
Comer Jennings

Steven Johnson
Robert Johnston
Daniel Jones
Lynn Jones
James Jordan III
Gracia Kalantar
Thomas Keith Jr.
William Kelly
Christopher
Kennedy
Mr. & Mrs. Brian
Kent
John Lassiter
Amber Liphrott
Sara Edi Livingston
Sherry Lizotte
Donald
Longenecker
Kennedy
Mr. & Mrs. Steven
Mathews
Andrew
McDermott III
Thomas Hunter
McEaddy
James McLeod
Merritt Brothers
Inc.
Ernest Messenger
Mr. & Mrs.
Christopher
Moder
Darryl Moore
Brian Morris
Jennifer Morton
Guy Northcutt
Maureen O'Brien
Mr. & Mrs. David
Myers
Brehon Odronic
Suzanne O'Neal
Larry Owens
Angela Parker
Robert Parsley
Mia Pozzatti
William Pulliam
Mr. & Mrs. William
Querlin
Mr. & Mrs. Bartow
Rankin
Mary Ray
Maribelle
Richardson

Mr. & Mrs.
Donald Ritchie
Wilson Rosario
Paul Russell
Nancy Seay
Rachel Sheffield
Donald Shaw
Elizabeth
Shorridge
Charles Shufeldt
Judy Simmons
Jody Smith
William Spell
Mr. & Mrs.
Charles Strong
Penelope Strother
Harry Stoudemire
Mell Tanner III
Mr. & Mrs. Lee
Thomas
James Tiller
Jane Toszel
Ernest Turner
Suzanne Turner
Evelyn Ullman
Mark Vallely
Holly Van Dissel
Hubert Veal
Susan Vincent
Lisa Vogel
Tilda Wall
Victor Walters
Constance Webster
Jane Willson
Laura Watts
Carla Wertheimer
Lisa Witcomb
Christine Woods
David Zeigler

Every effort has been made to list all gifts received. Please contact the School to report any errors so that we may correct. Thank you.

Current SED Endowments

*Indicates funds with special needs for FY 1996

SEDAA Graduate Fellowship*
Environmental Design Scholarship*
HB Owens Scholarship
Clay Adamson Scholarship
ERDAS Scholarship for studies in GIS
Robert Johnson Hill Scholarship
Daniel B. Franklin Scholarship
Jonathan G. Seymour Program Support Fund
Owens Resource Center Support Fund*
Vincent Lecture Fund
Draper Chair Endowment
Hodgson and Douglas Merit Scholarship Fund

SED Operating Funds

SED Program
Enrichment Fund*
SED Alumni
Association Fund*

CAPITOL GAINS TAXES

The University offers unique counseling on estate planning. Rather than paying capitol gains in taxes, it is possible to redirect the gain to the University. It is also possible to share some of that gain with your heirs and favorite causes. Call Allen Stovall at 706-542-4727 to discuss some of these unique possibilities. ■

HERITAGE SOCIETY

The University of Georgia recognizes alumni(ae) and friends who have made documented bequests in their wills or other planned gifts in support of the University. Charter members from the SED include Dan Franklin (BLA '63), Jay Starbuck (BLA '69), Allen Stovall (BLA '59), and Scott Weinberg (SED faculty). For more information about gift bequests and the Heritage Society, contact Scott Sikes, UGA Foundation Building, at 706-542-8120.

SED CALENDAR 1995 - 1996

DATE	TIME	EVENT	PLACE
September 13	4:30 p.m. - 6:00 p.m.	MLA & MHP Reception	Founders Garden, UGA
September 22	4:30 p.m. - 7:30 p.m.	Faculty & Staff Reception	Founders Garden, UGA
September 29	4:30 p.m. - 6:30 p.m.	BLA Reception	Flinchum's Phoenix, UGA
September 29	7:00 p.m. - 9:00 p.m.	President's Club Reception	President's House, UGA
October 6	8:00 p.m. - 11:00 p.m.	SED Alumni Reception	Cleveland ASLA Conference Center
October 13	8:00 p.m. - 10:00 p.m.	MHP Reunion	National Trust, Fort Worth, Texas
October 27 - November 30		Accreditation Exhibition	SED Gallery, UGA
November 6	3:30 p.m. - 4:30 p.m.	Vincent Lecture	Law School, UGA
November 6	12:00 p.m. - 1:30 p.m.	BLA Accreditation Alumni Lunch	Georgia Center, UGA
November		LARE Grading and Draining Workshop	Caldwell Hall
December 8	7:30 p.m. - 10:30 p.m.	SED Faculty/Staff Christmas	Athens, Georgia
January 5	5:00 p.m. - 6:30 p.m.	Places in Time Opening	SED Gallery, UGA
January 5 - March 2		Places in Time Exhibition	SED Gallery, UGA
January 26 - January 27		Continuing Education Program	Georgia Center, UGA
February 16	11:30 a.m. - 1:00 p.m.	Williams Lecture	Caldwell Hall, UGA
March 1	11:30 a.m. - 1:00 p.m.	Faculty/Student Panel	Caldwell Hall, UGA
April 5	4:30 p.m. - 6:30 p.m.	Student Exhibition Opening	SED Gallery, UGA
April 5-28		Student Exhibition	SED Gallery, UGA
April 19	3:30 p.m. - 5:00 p.m.	Vincent Lecture	Caldwell Hall, UGA
April 19-21		Alumni Weekend	Caldwell Hall
April		Georgia LARE Review	Caldwell Hall
May 10	12:30 p.m. - 1:30 p.m.	Honors Day Luncheon	Founders Garden, UGA
May 13	12:00 p.m. - 1:30 p.m.	MLA Accreditation Alumni Lunch	Georgia Center, UGA
May 14	12:30 p.m. - 1:30 p.m.	National Preservation Week Barbecue	Founders Garden, UGA
May 17	4:30 p.m. - 6:30 p.m.	Olympic Venue Exhibition	SED Gallery, UGA
May 17 - September 30		Olympic Venue Exhibition	SED Gallery, UGA

SED News is an annual publication by the School of Environmental Design and the University of Georgia.

Editors
SED Directors

Assistant Editor
Jennifer Maul

Graphic Designer
Teri Nye

Correspondence should be addressed to SED News
609 Caldwell Hall
School of Environmental Design
University of Georgia
Athens, GA 30602-1845
706-542-4485(FAX)
706-542-4719 (Phone)



Non-profit Organization
U.S. Postage
PAID
Permit #165
Athens, GA

New Zealand Trip

Earlier this year, Frank Boffa, BLA '68, issued his second invitation in two years to the SEDAA for hosting a group visit to New Zealand. Frank, with offices in Wellington, Auckland, Christchurch, and Queenstown, mailed a proposed itinerary that criss-crosses through the north and south islands with stop-over visits in eight cities. For additional variety, the travel between destinations includes bus, train, ferry, air, and four wheel transport (one day).

The current plan is to offer a 14-day tour in New Zealand during February or March 1997 with optional "add-ons" for those wishing to combine stop-overs in Australia, Fiji, or Hawaii, etc. Projected 1997 costs for the two week New Zealand segments that include hotels, meals, transportation and round-trip airfare from the U.S. West coast is \$3,500-3,800 per person, with optional add-on stops.

The desired group size is approximately 40 persons with all or the majority of participants being SED Alumni. Other potential participants include registered landscape architects from neighboring states and other UGA alumni. The tentative deadline for reservations is April 1996. In final itinerary planning, special attention is being paid to fulfilling state landscape architectural registration requirements for CEU credits.

Alumni(ae), including those who have previously expressed an interest in the tour, should return a completed form (below), attention Allen Stovall, or phone 706-542-4727.

NEW ZEALAND

Inquiries are welcomed as details about the tour are being finalized. Final tour package is expected to be available by January 1, 1996.

- ☐ I am very interested in the New Zealand Trip
☐ I am moderately interested in the New Zealand Trip
☐ I am not interested

Name _____
Address _____
Telephone _____

SED ANNUAL FUND

- ☐ Yes, I support SED. Enclosed is my gift of:
\$1000 \$500 \$250 \$100 other

Please make checks payable to the University of Georgia Foundation

Name _____
Address _____
Telephone _____

Please use my gift as follows (refer to page 19)

Please send me the following information on planned giving.

- ☐ Ways of Giving
☐ Simple Ways to Reduce Income Taxes
☐ Giving Real Estates
☐ Giving Securities
☐ Giving Through Charitable Trusts
☐ How To Make Wills That Work

PLEASE RETURN TO
Allen Stovall
School of Environmental Design
The University of Georgia
609 Caldwell Hall
Athens, GA 30602-1845