

COMMUNITY PARK

This park is a unique landscape and gathering space dedicated to all citizens of Newton County for the pursuit of joy, peace and knowledge.

Discovery Trail



Experience Path



Learning Walk



Owens Library
College of Environment & Design
University of Georgia

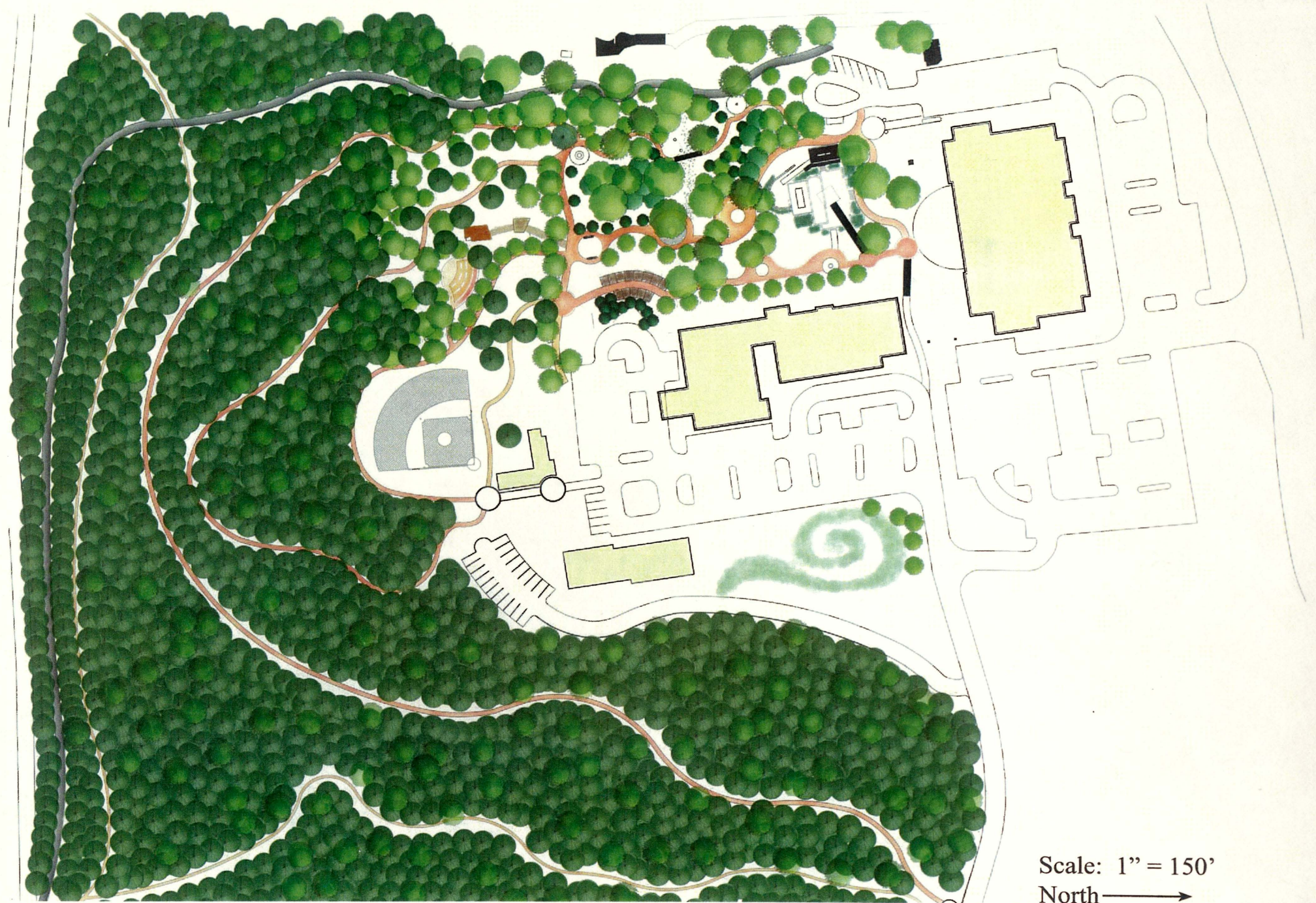
NEWTON COUNTY, GEORGIA

DESIGNERS: HANK METHVIN AND ERIC CHILDS

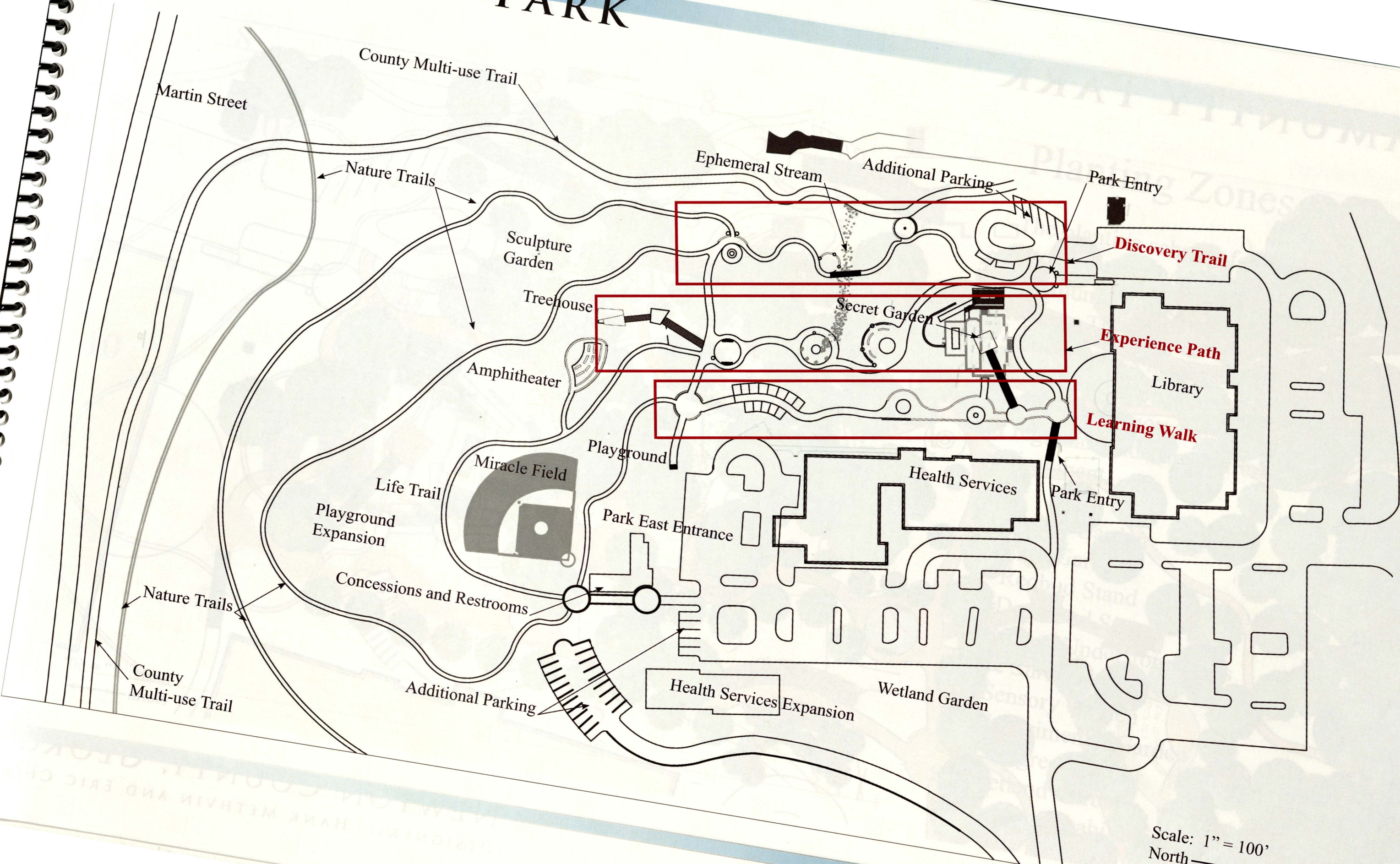
COMMUNITY PARK

Newton County's Community Park is nestled in the heart of Covington, Georgia just east of the city's historic district. The site is characterized by a stand of mature trees with a gentle south-facing slope. The site's adjacency to the state of the art Newton County Library, the Newton County Public and Mental Health Facilities and the newly designed multi-use county-wide trail contribute to make this an exciting location.

Historic ruins, remnants of the region's agricultural history and a relatively undisturbed hardwood and pine forest offer a compelling setting for this park. The location and character of this place has inspired a group of Newton County citizens to envision a park that will serve everyone.



COMMUNITY PARK



Scale: 1" = 100'
North →

NEWTON COUNTY GE...
DESIGNERS: HANK METHVIN AND ERIC CH...

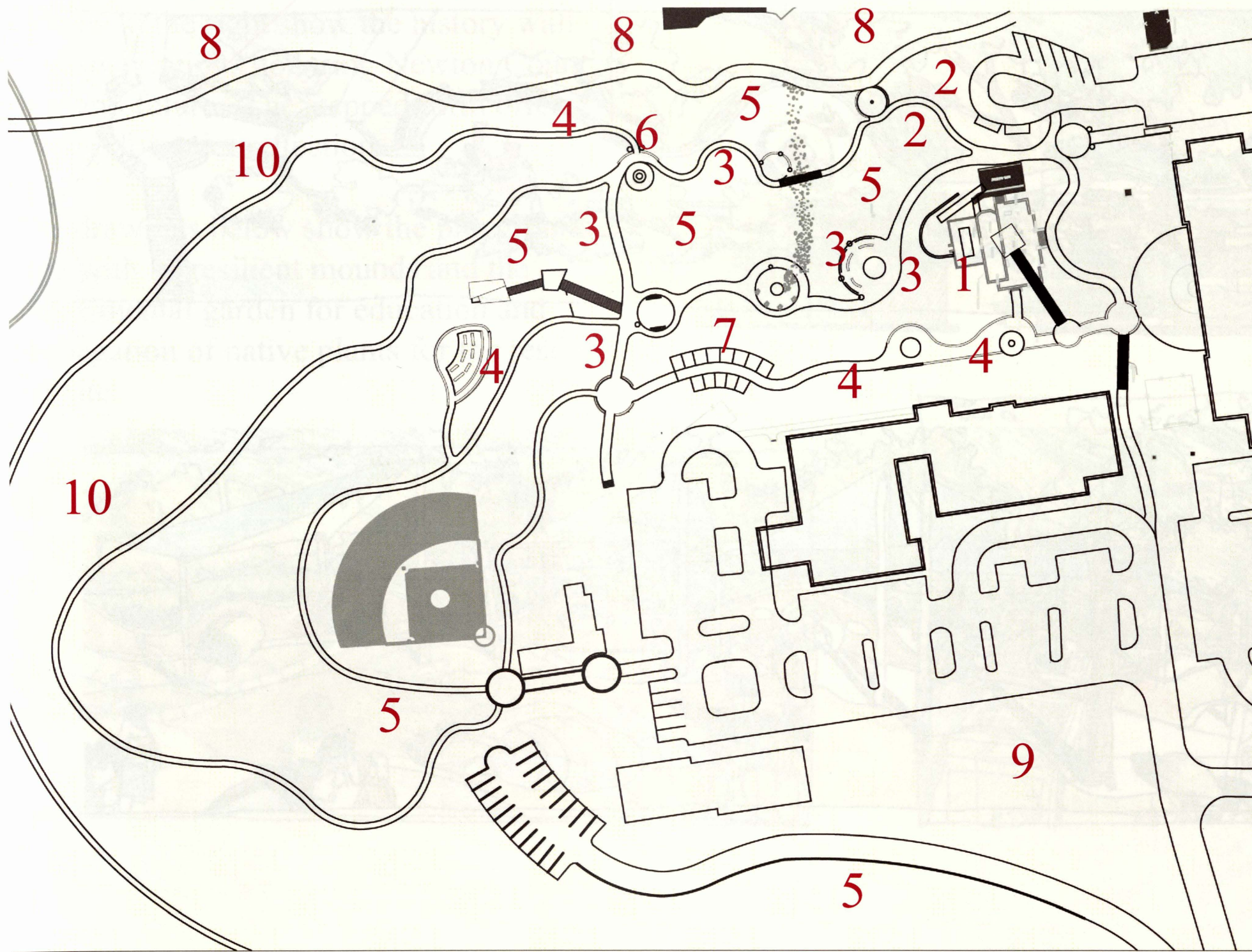
COMMUNITY PARK



Scale: 1" = 50'
North →

NEWTON COUNTY, GEORGIA

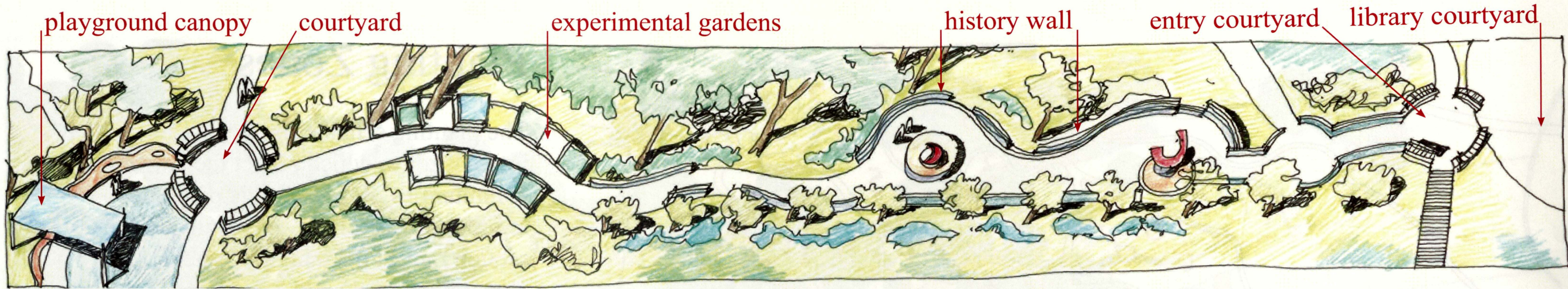
DESIGNERS: HANK METHVIN AND ERIC CHILDS



Planting Zones

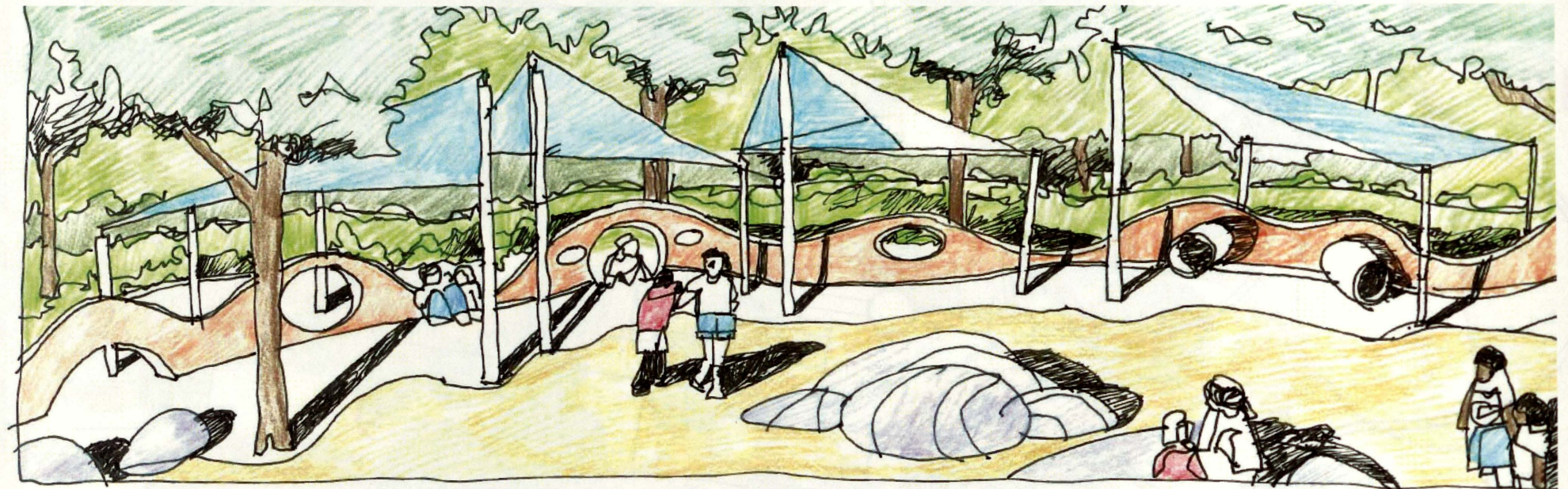
The planting scheme for the park is divided into ten zones which reflect the native plant communities of the Georgia piedmont region. The layout of the plants in each section ranges from highly structured plots to native clusters and restored areas. Visitors can enjoy and learn from the variety of regional landscapes offered by this rich environment.

1. Secret Garden
2. Fern Garden
3. Redbud Stand
4. Dogwood Stand
5. Native Understory Trees & Shrubs
6. Sensory Garden
7. Experimental Garden
8. Evergreen Buffer
9. Wetland Garden
10. Forest Rehabilitation



The Learning Walk

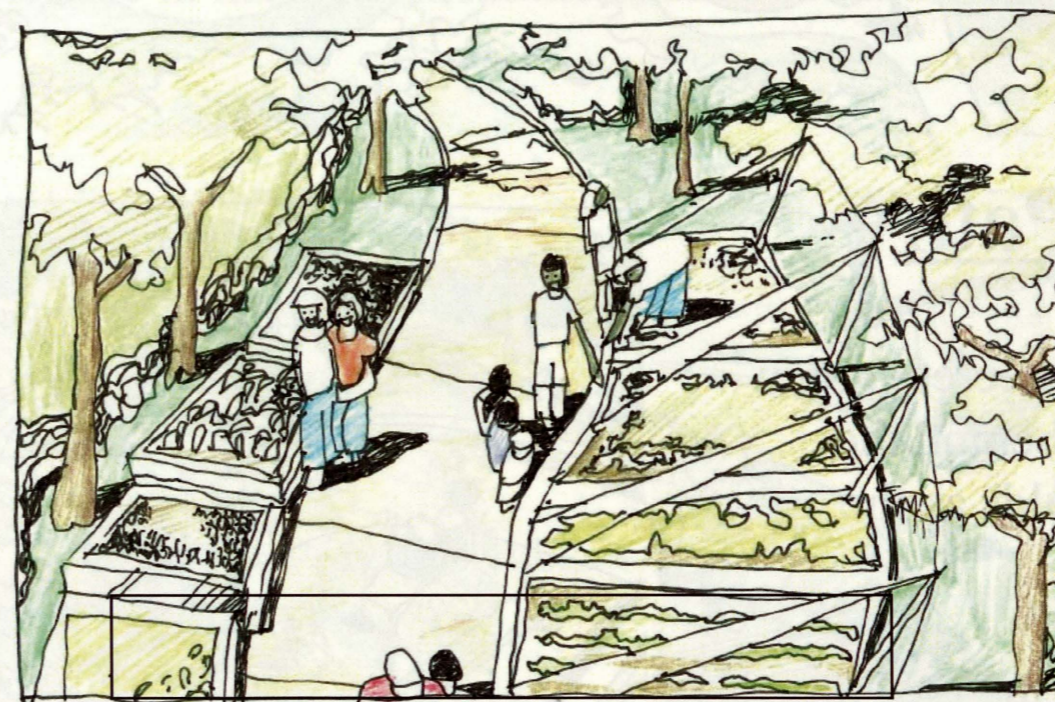
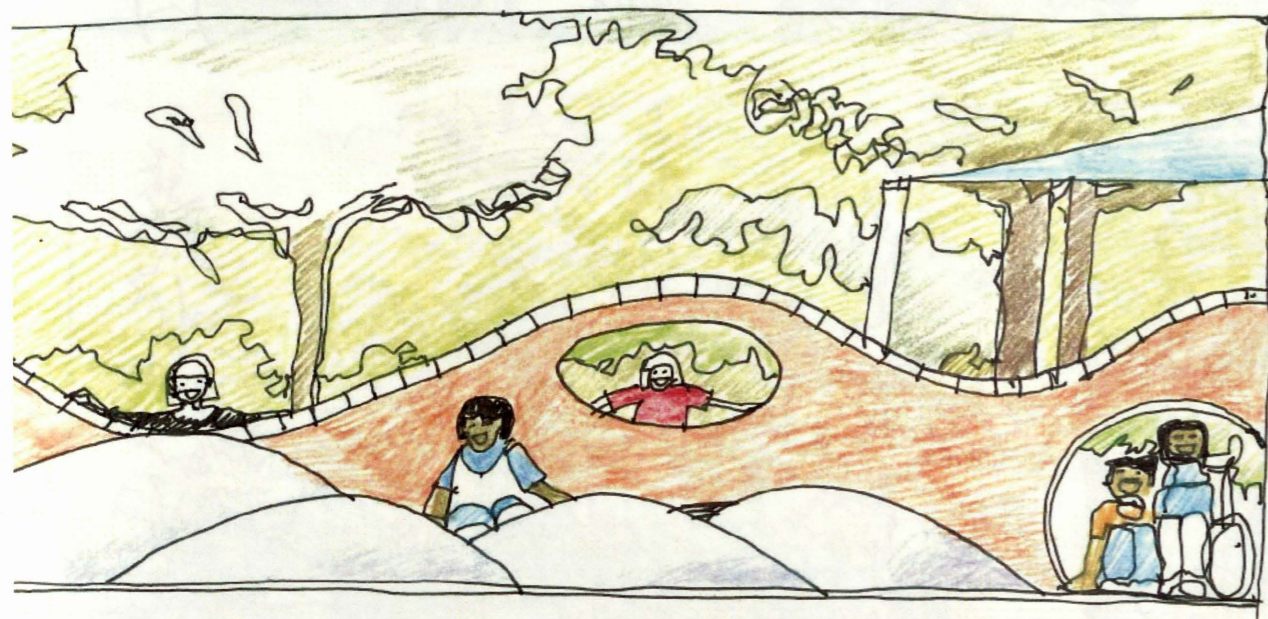
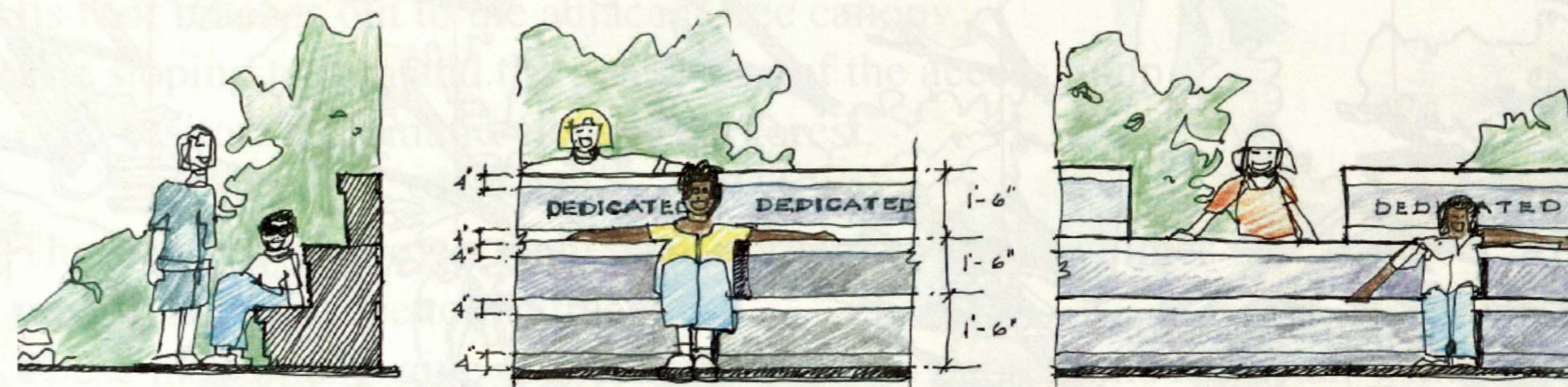
This walk includes an area for playful learning and at the same time important information about the history of the site and the project. The drawing to the right shows the playground area linked by the learning walk. The walk's curving wall offers shapes for play and the canopies above offer shade from the afternoon sun.



COMMUNITY PARK

Details to the right show the history wall with inscriptions honoring Newton County's past and future. The stepped form offers seating for quiet reflection.

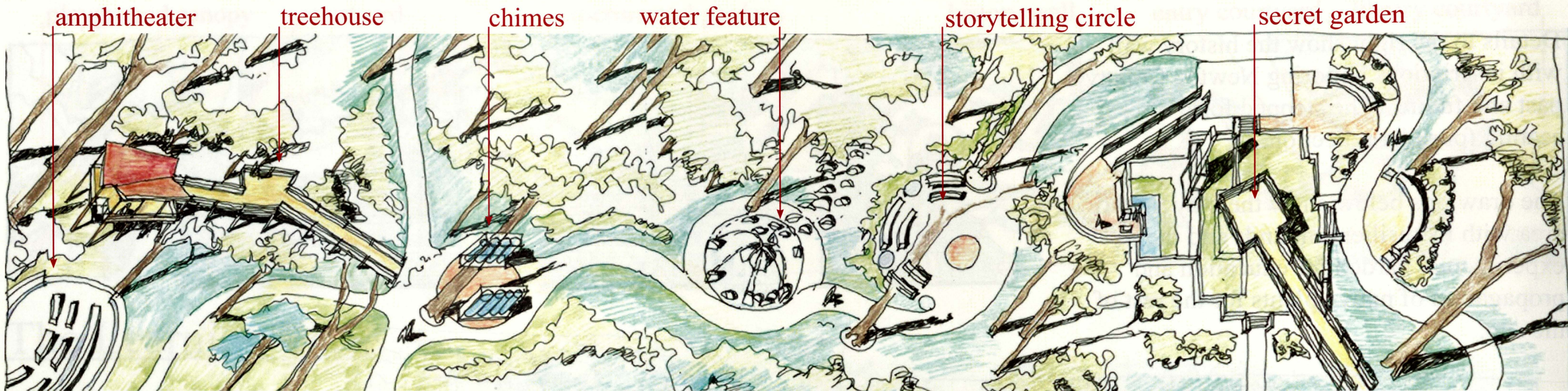
The drawings below show the playground area with its resilient mounds and the experimental garden for education and propagation of native plants for the rest of the site.



Owens Library
College of Environment & Design
University of Georgia

NEWTON COUNTY, GEORGIA

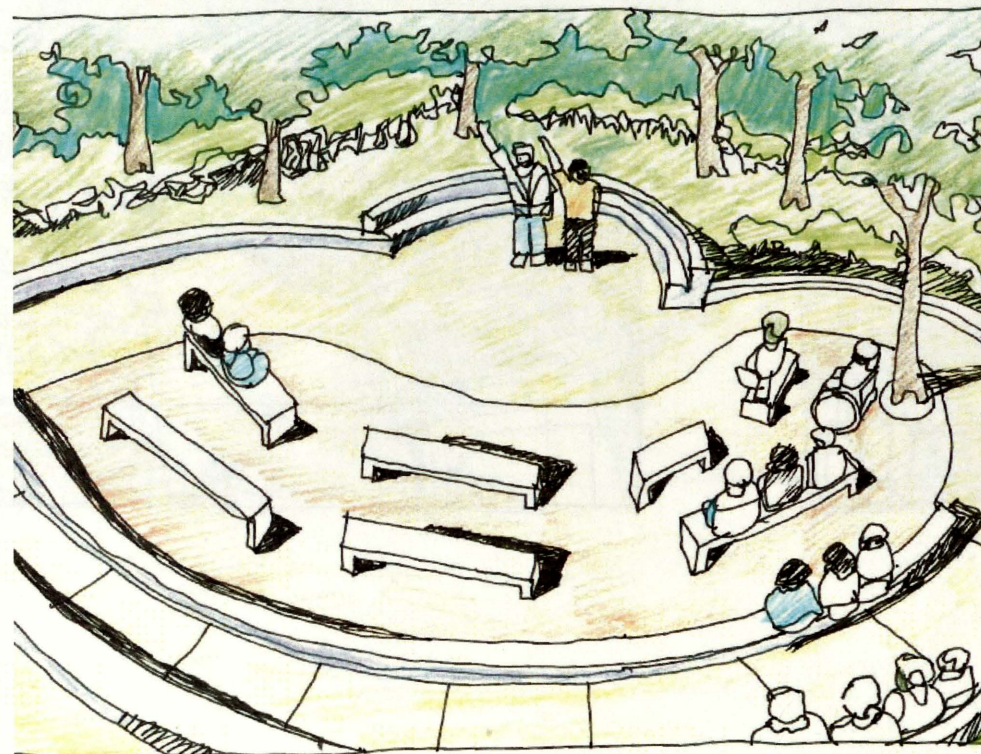
DESIGNERS: HANK METHVIN AND ERIC CHILDS



The Experience Path

This path is highlighted by the secret garden that will occupy the ruins just behind the library. A series of events unfolds as the visitor strolls south.

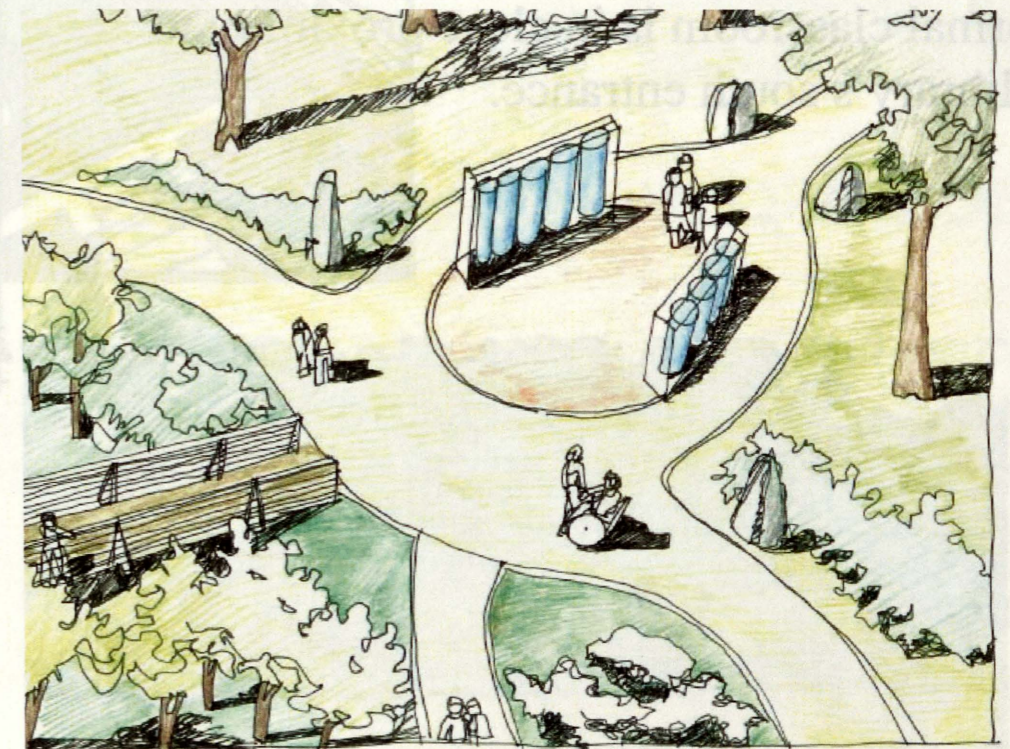
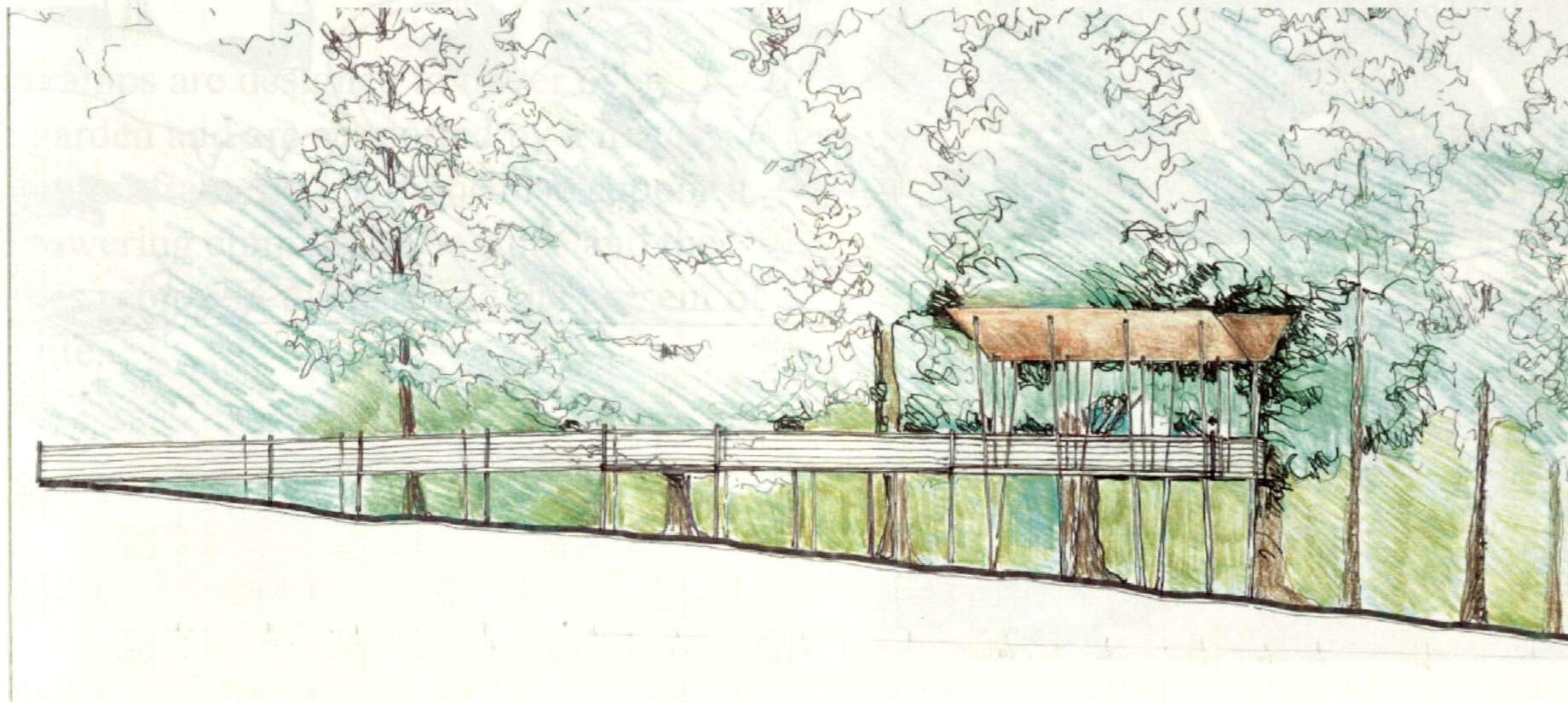
The drawings to the right describe the amphitheater. Retaining walls and movable seats offer many seating options for guests.





The treehouse sits at the south end of the Experience Path. Its roof reaches out to the adjacent tree canopy. The sloping terrain and the gentle rise of the access ramp offer visitors a dramatic view of the forest.

The sketch in the lower right hand corner shows the chimes next to the entrance to the treehouse. These instruments give everyone a chance to express the musician within. Their gentle tones are in harmony with the sounds of nature's woodlands.



COMMUNITY PARK

The water feature offers a cool play area for all ages and serves as a sculptural space inspired by Georgia's piedmont streams. This tranquil space sits in the center of the Experience Path. Small rocks conceal waterspouts that spray a fine mist of water.

The storytelling circle lies between the water feature and the secret garden. This area offers seating for groups up to forty and like the rest of the walk is built from natural materials shaped by nature. The informal classroom is in close proximity to the library's south entrance.

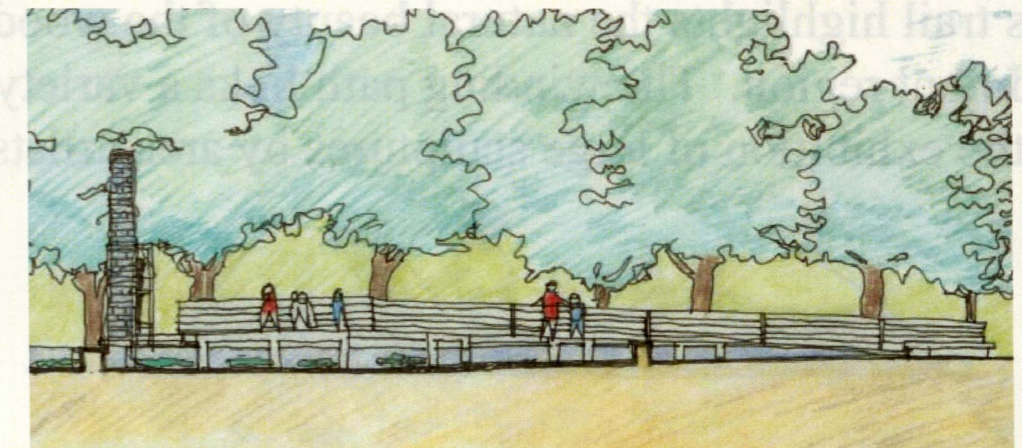
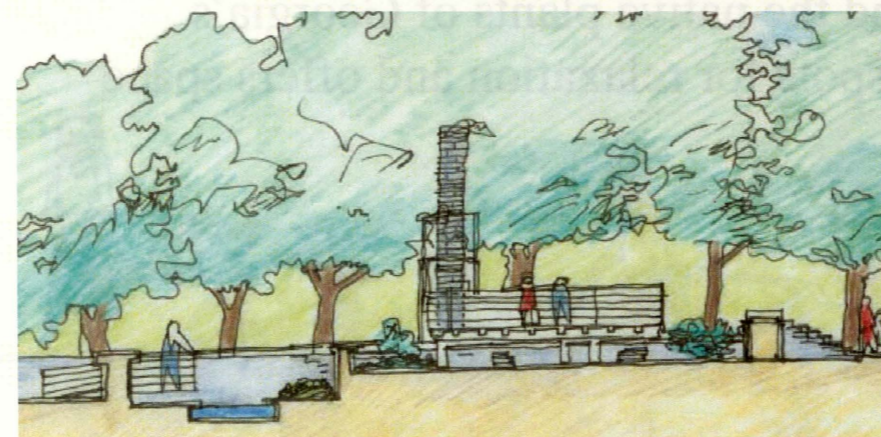
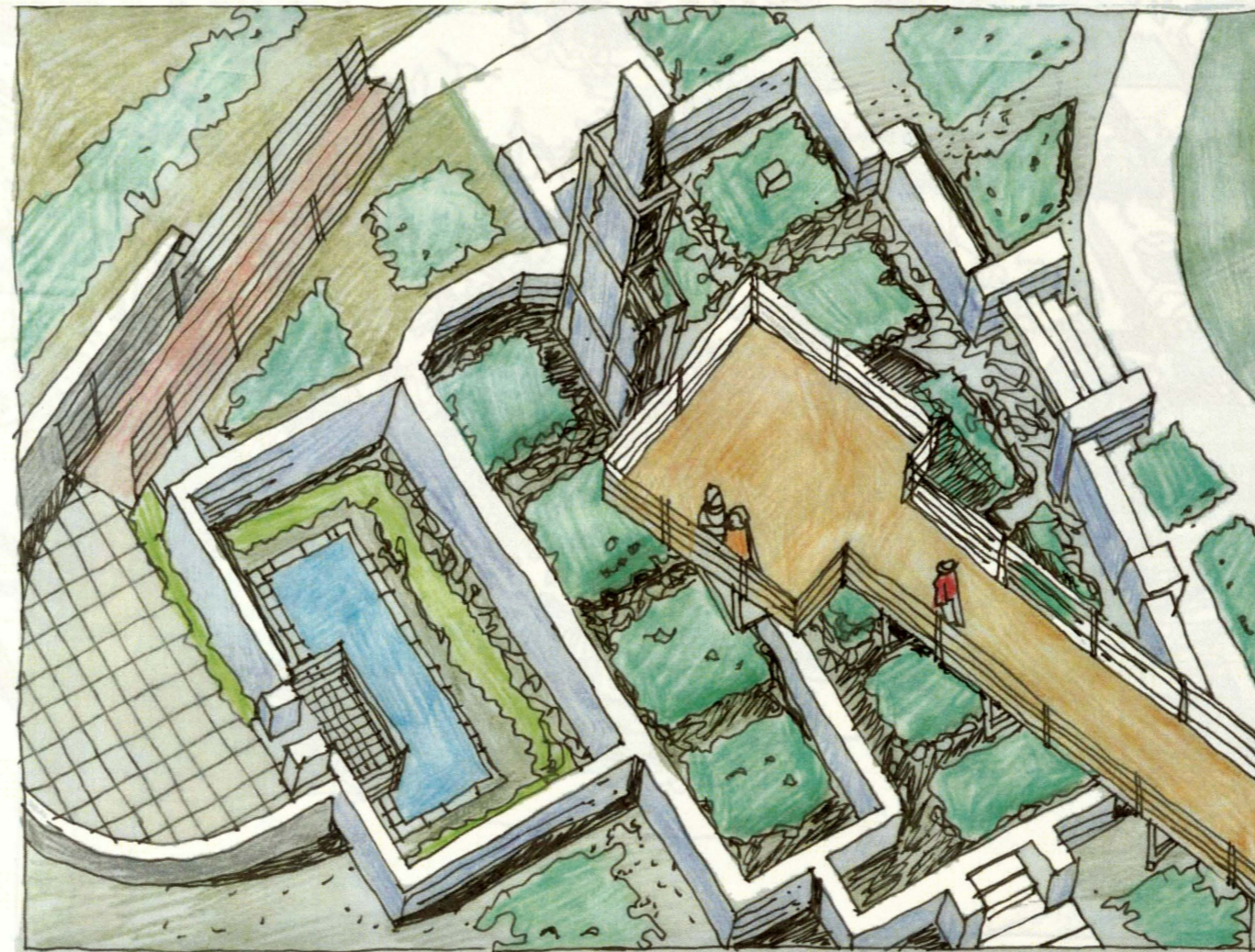


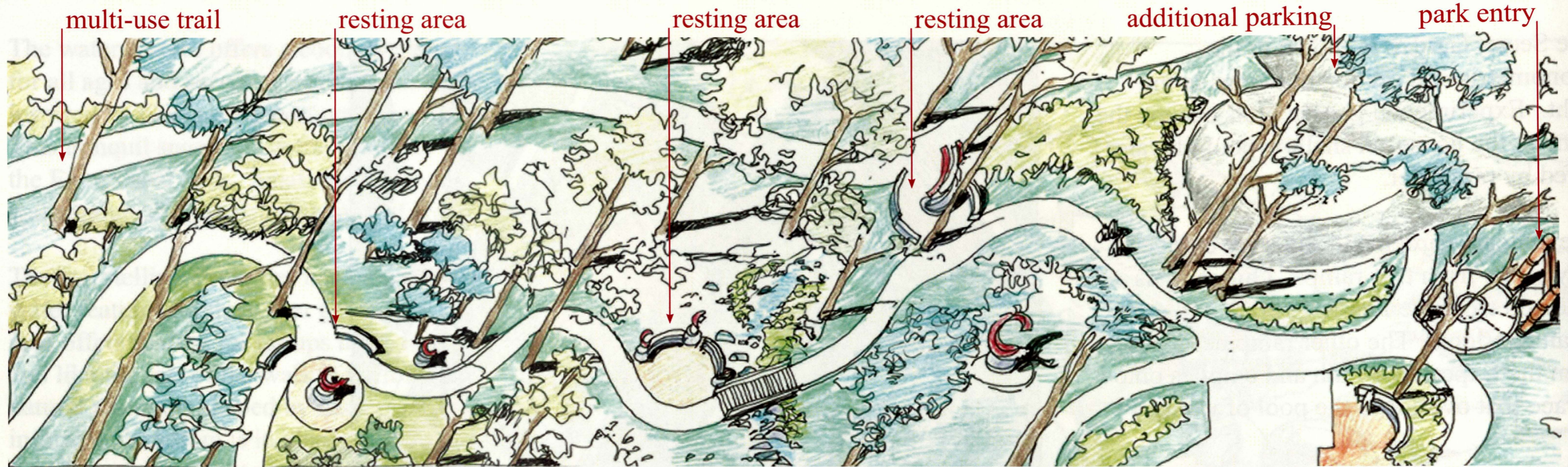
COMMUNITY PARK

The Secret Garden is shown in the axonometric and section drawings to the right. Experimental garden plots occupy the ruins of the house. A shallow pool of water is fed by rainwater.

The delicate garden and ruins are enjoyed by visitors from two ramps. One ramp is accessed from the Learning Walk and ends on an overlook. The other ramp descends from the Experience Path and empties onto a terrace that overlooks the pool of water.

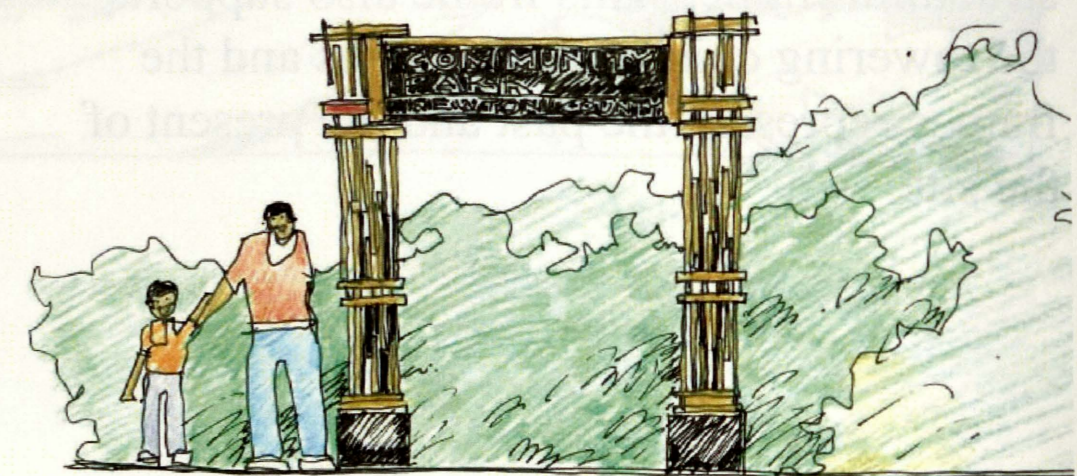
The ramps are designed to hover over the garden and are supported by a metal structural frame. This frame also supports the towering chimney. The ruins and the frames represent the past and the present of the site.





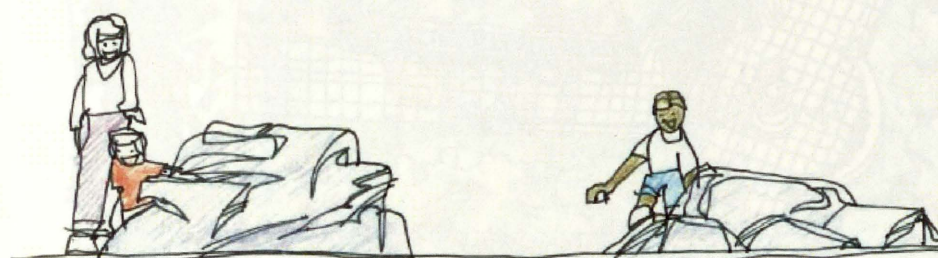
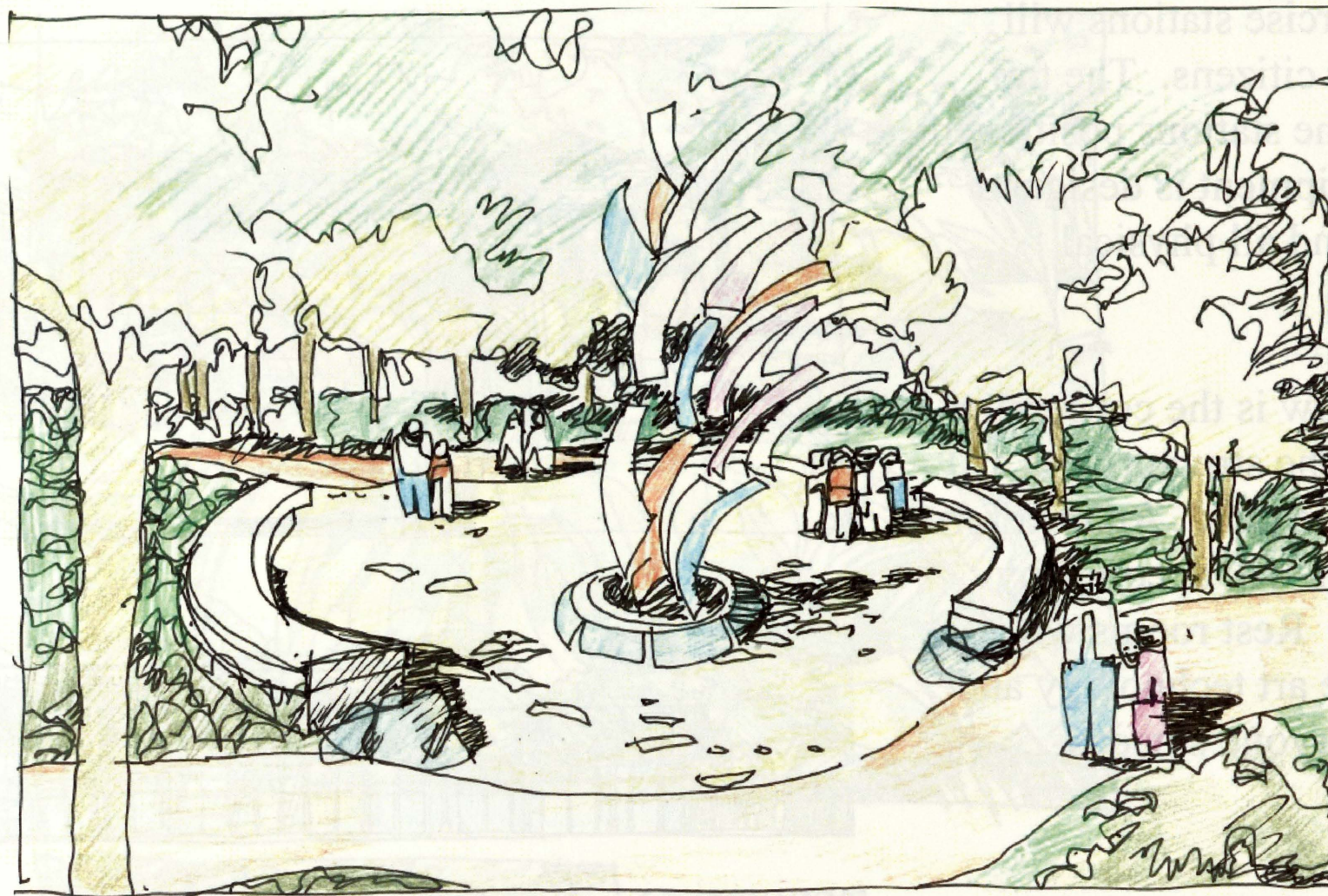
The Discovery Trail

This trail highlights the natural beauty of the woods and the native plants of Georgia's piedmont region. The winding path links a variety of spots for relaxation and offers space for the exhibition of large sculptures by area artists.



The drawing to the right depicts one of several resting areas along the trail. The space is highlighted by a large scale sculpture and includes seating walls for relaxation. Construction for the Discovery Trail echoes materials from the site's natural condition.

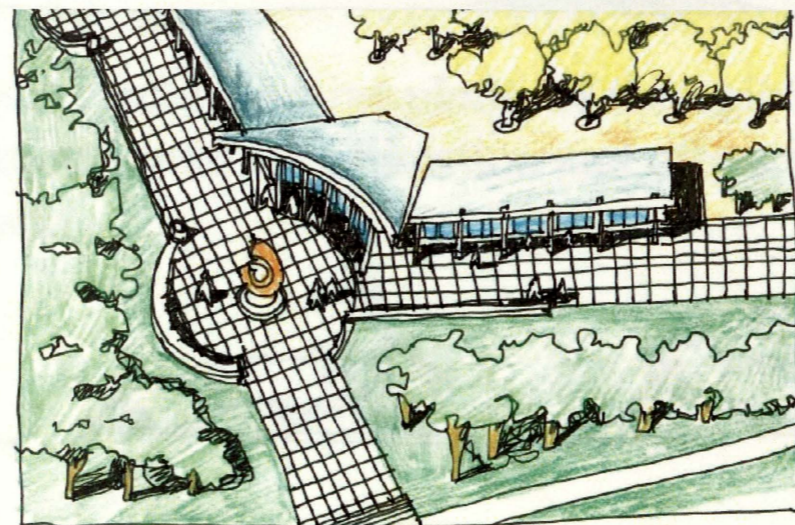
The drawings below illustrate how rocks along the trail can offer forms for play, informal seating and simply natural forms for visual interest. Sculpture found on each trail in the park will be designed and built by local and regional artists. A design competition will be organized as each area of the park is designed and constructed.



COMMUNITY PARK

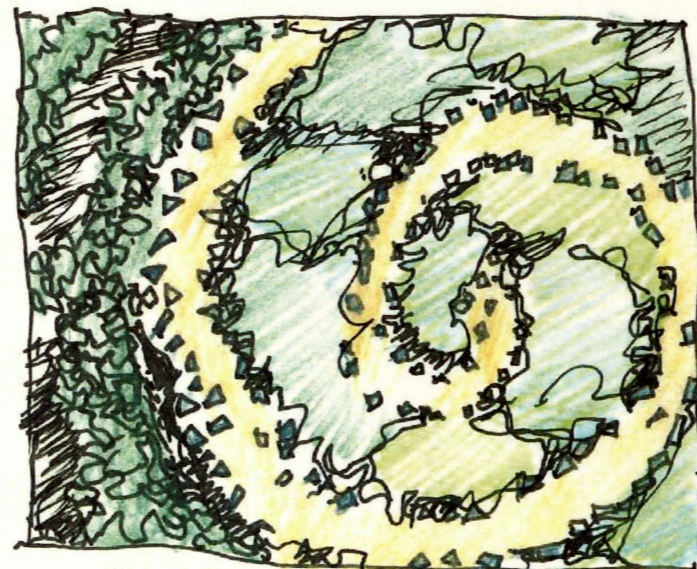
The Life Trail's ten exercise stations will serve the county's older citizens. The top two illustrations show the stations positioned along the trail. The equipment is designed to be used for all ages and all physical abilities.

The building shown below is the concession and rest room facility. The structure sits at the eastern entrance to the park. An area for rest indoors and outdoors will accompany the refreshment counter. Rest rooms will be fitted with state of the art technology and family areas serving everyone's needs.



COMMUNITY PARK

This wetland inspired garden sits at the eastern edge of the site. The existing retention pond next to the parking area will be sculpted into a spiraling shape. Rocks will inscribe the spiral and help form gentle terraces down the slope. Plants that are native to Georgia's rock outcroppings and other unique conditions will inhabit this revitalized landscape. The garden will serve as an example of landscape restoration and will set the stage for visitors entering from the east.



Owens Library - UGA
3 2108 05752 2990

Owens Library
College of Environment & Design
University of Georgia

