



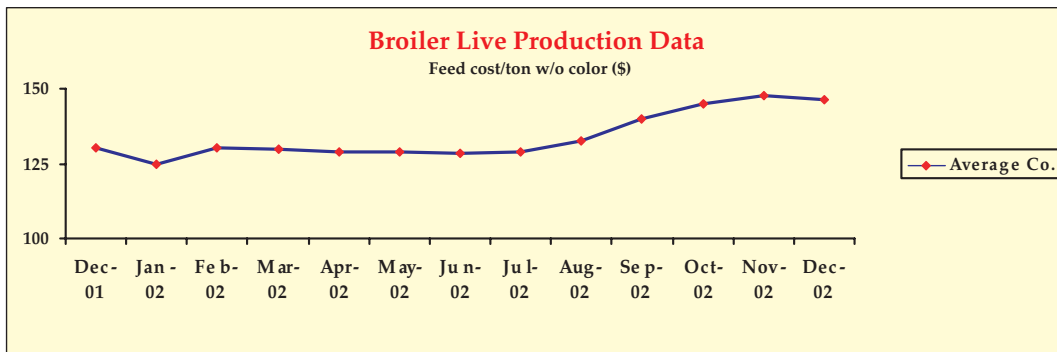
The Poultry Informed Professional

Published by the Department of Avian Medicine, University of Georgia
 Editor: Charles Hofacre, Associate Professor, Department of Avian Medicine

Phone (706) 542-5645 Fax (706) 542-5630
 e-mail: sclanton@arches.uga.edu

YEAR IN REVIEW December 2001 — December 2002

Here is a summary of the past year's Broiler Performance and Condemnation Data by Region and Company.

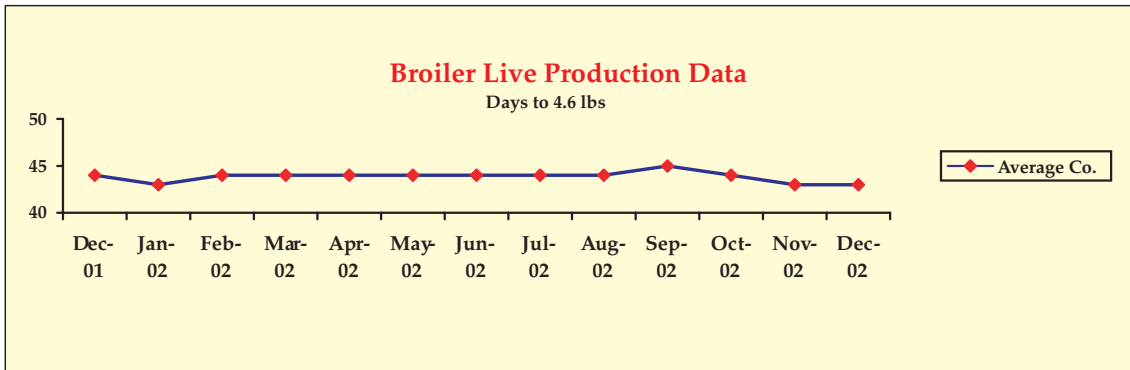
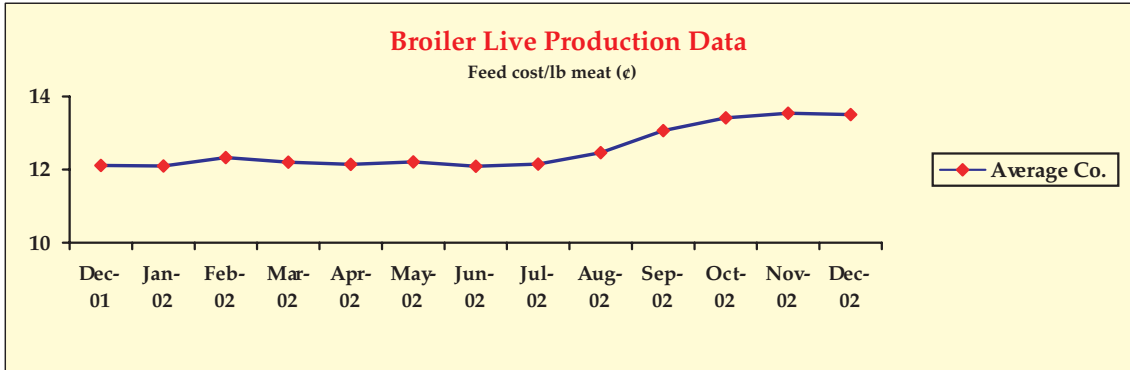


Broiler Performance Data (Region) Live Production Cost					
	SW	Midwest	Southeast	Mid-Atlantic	S-Central
Feed cost/ton w/o color (\$)	142.14	133.16	150.10	151.39	147.56
Feed cost/lb meat (¢)	13.17	12.13	13.96	14.72	13.59
Days to 4.6 lbs	44	43	43	43	42
Chick cost/lb (¢)	4.13	4.13	4.04	3.69	3.97
Vac-Med cost/lb (¢)	0.05	0.02	0.07	0.05	0.05
WB & 1/2 parts condem. cost/lb	0.23	0.19	0.15	0.24	0.20
% mortality	4.85	3.47	4.26	4.77	4.11
Sq. Ft. @ placement	0.74	0.75	0.78	0.75	0.81
Lbs./Sq. Ft.	6.90	7.04	6.77	7.39	6.65
Down time (days)	19	18	17	18	17

Data for week ending 12/21/02

Contents

Year in Review... Pages 1-8
 Broiler Performance Data (Region) Page 1
 Broiler Performance Data (Company) Page 2
 Broiler Whole Bird Condemnations (Region) Page 2
 Broiler Whole Bird Condemnations (Company) Page 10
 Announcements Page 9
 Excerpts.. "Broiler Hatchery" "Chicken and Eggs" and "Turkey Hatchery, ..." Page 11
 Meetings, Seminars and Conventions Pages 12-13
 PDRC Position Announcement Page 13



Broiler Whole Bird Condemnation (Region)

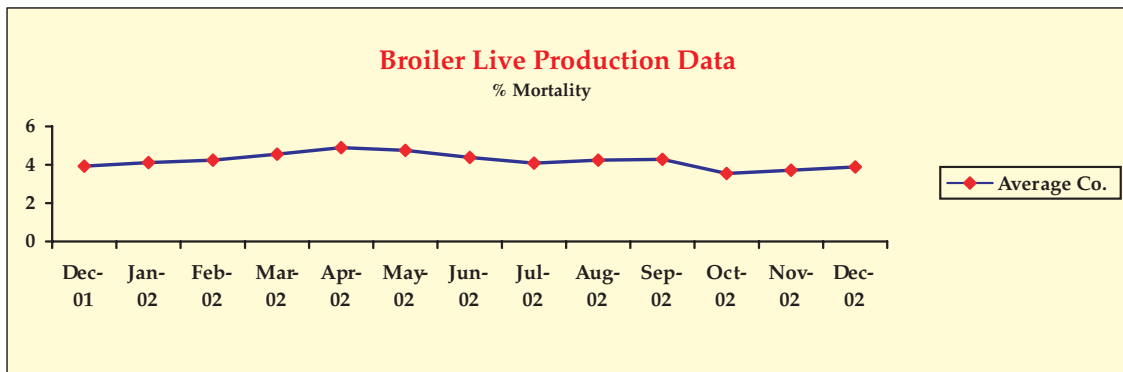
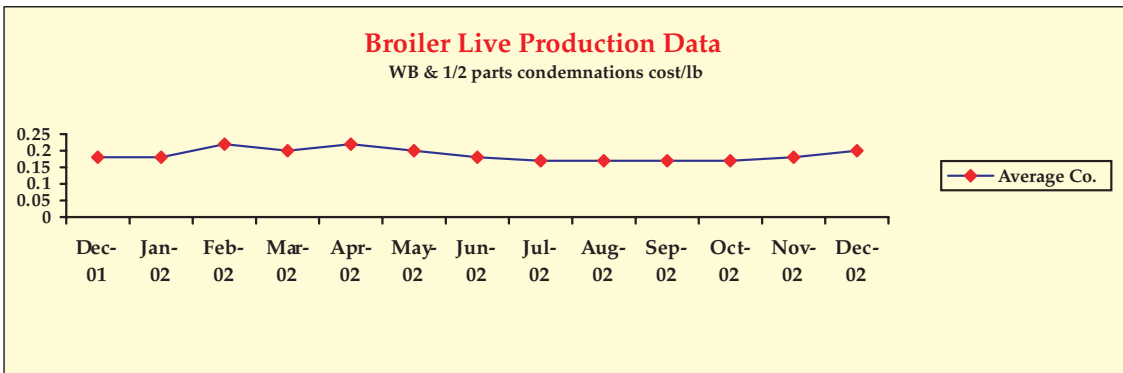
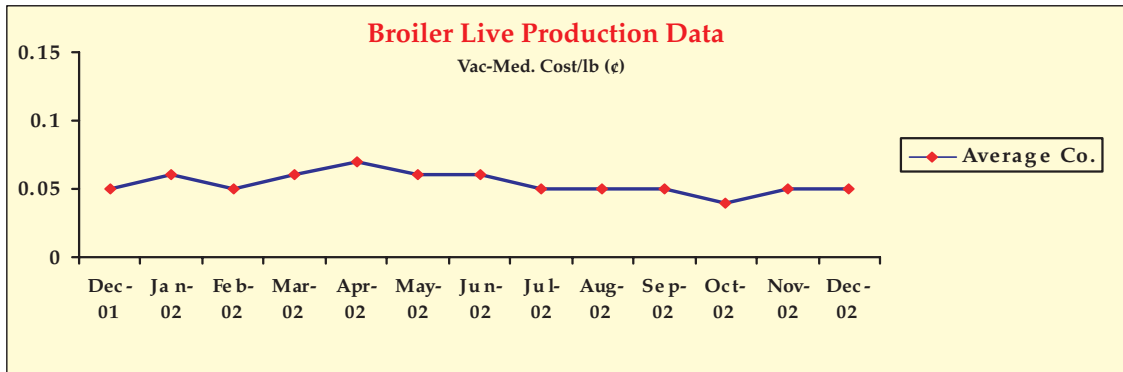
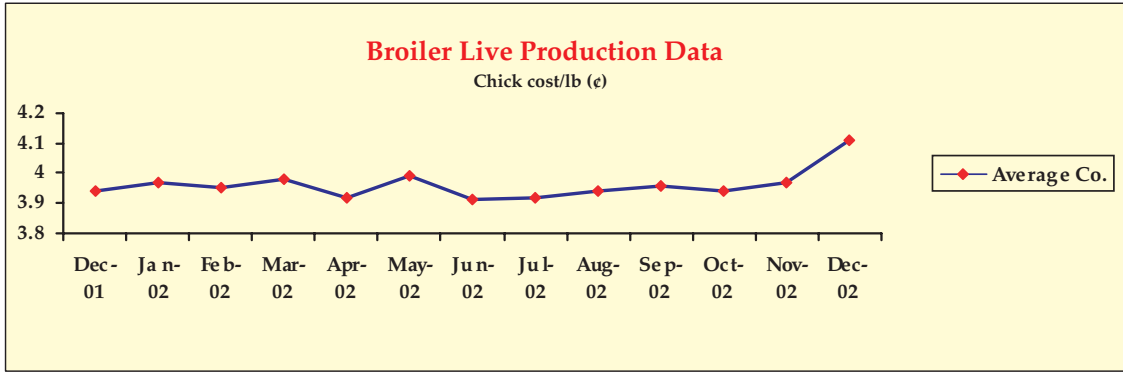
	SW	Mid-West	S. East	Mid-Atlantic	S. Central
% Septox	0.360	0.329	0.184	0.330	0.207
% Airsac	0.110	0.109	0.110	0.122	0.071
% I.P.	0.061	0.046	0.039	0.036	0.094
% Leukosis	0.003	0.005	0.001	0.009	0.001
% Bruise	0.011	0.004	0.009	0.009	0.011
% Other	0.034	0.006	0.022	0.009	0.014
% Total	0.579	0.499	0.364	0.515	0.399
% 1/2 parts condemnations	0.397	0.353	0.251	0.489	0.447

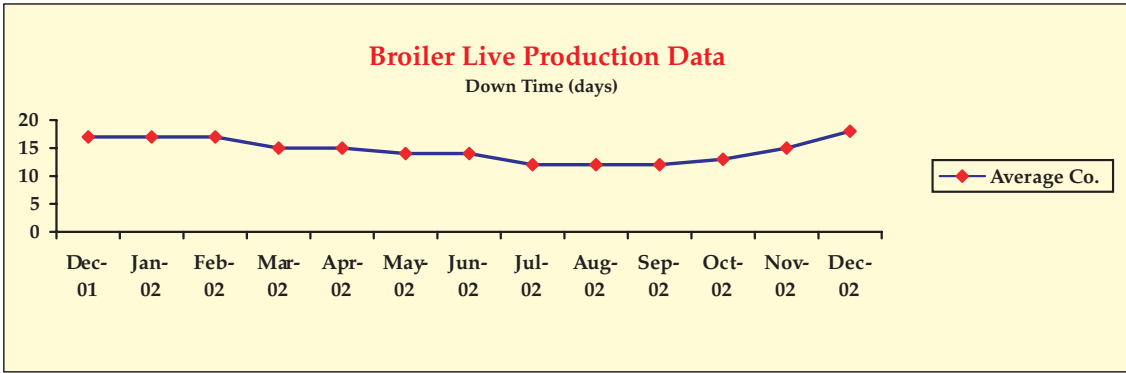
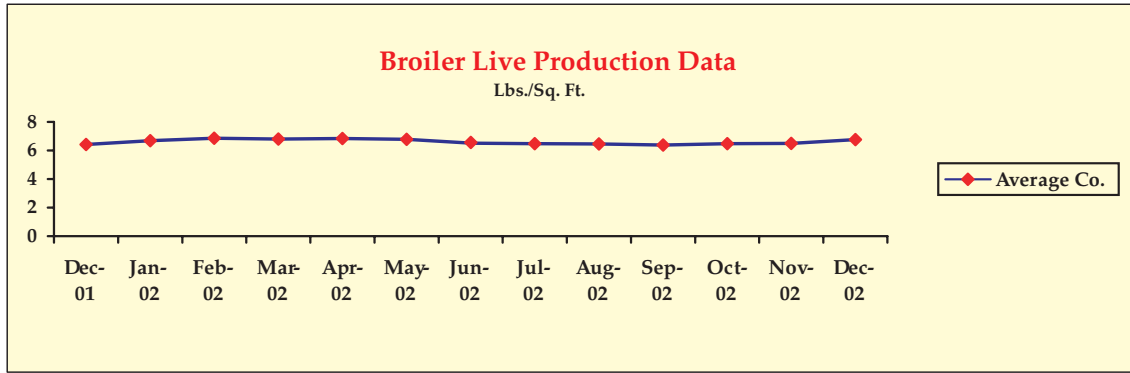
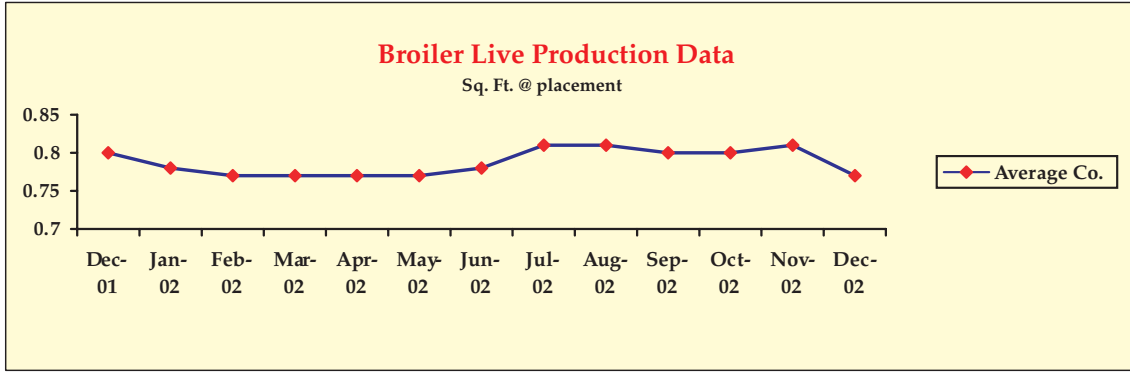
Data for week ending 12/21/02

Broiler Performance Data (Company) Live Production Cost

	Average Co.	Top 25%
Feed cost/ton w/o color (\$)	146.30	137.62
Feed cost/lb meat (¢)	13.54	12.80
Days to 4.6 lbs	43	42
Chick cost/lb (¢)	4.13	3.30
Vac-Med cost/lb (¢)	0.05	0.04
WB & 1/2 parts condemn. cost/lb	0.21	0.13
% mortality	4.35	3.21
Sq. Ft. @ placement	0.77	0.78
Lbs./Sq. Ft.	6.78	7.26
Down time (days)	18	19

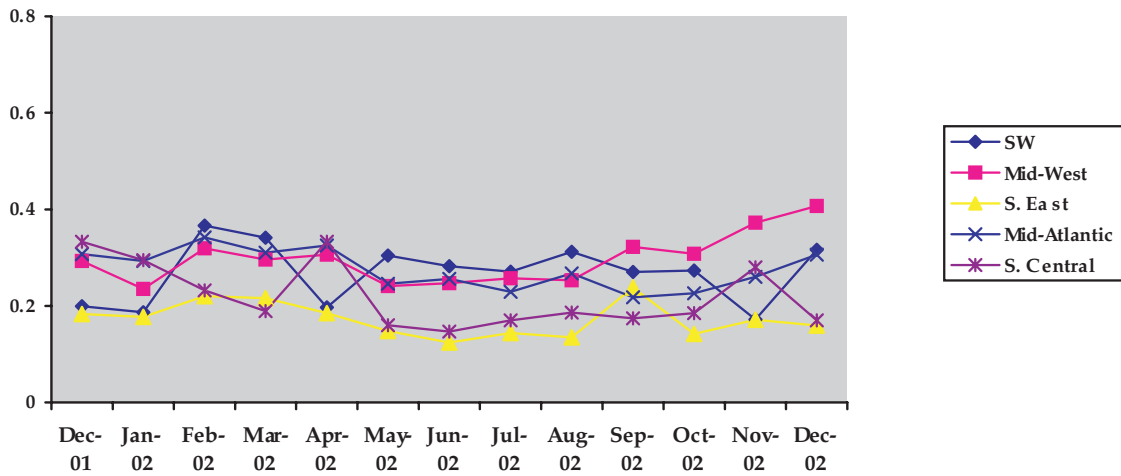
Data for week ending 12/21/02





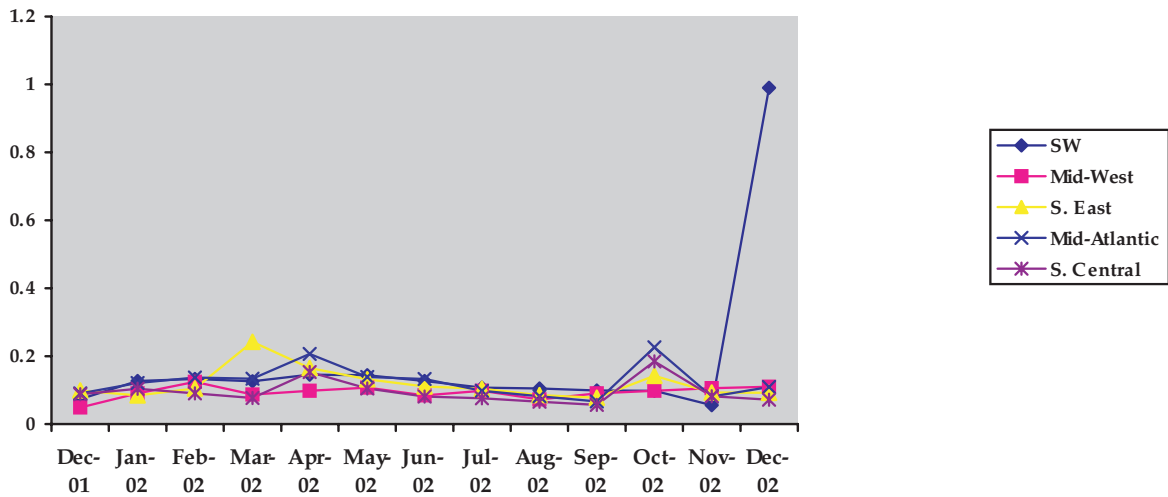
Broiler Whole Bird Condemnation (Region)

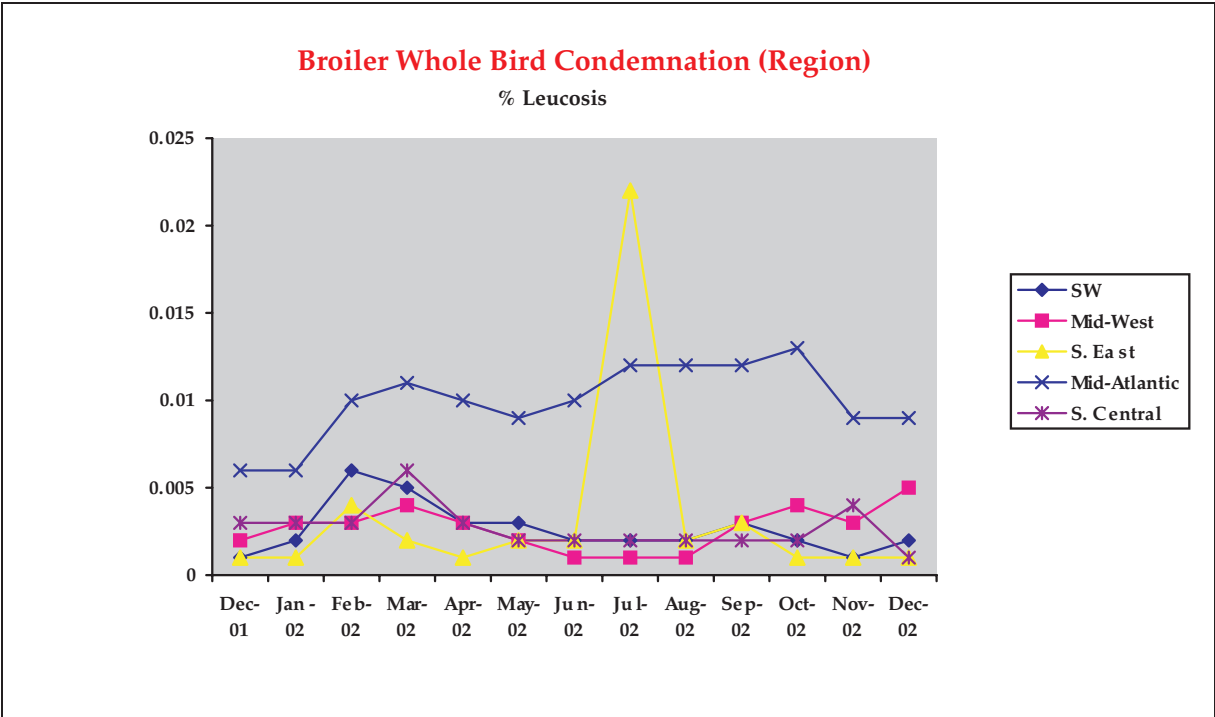
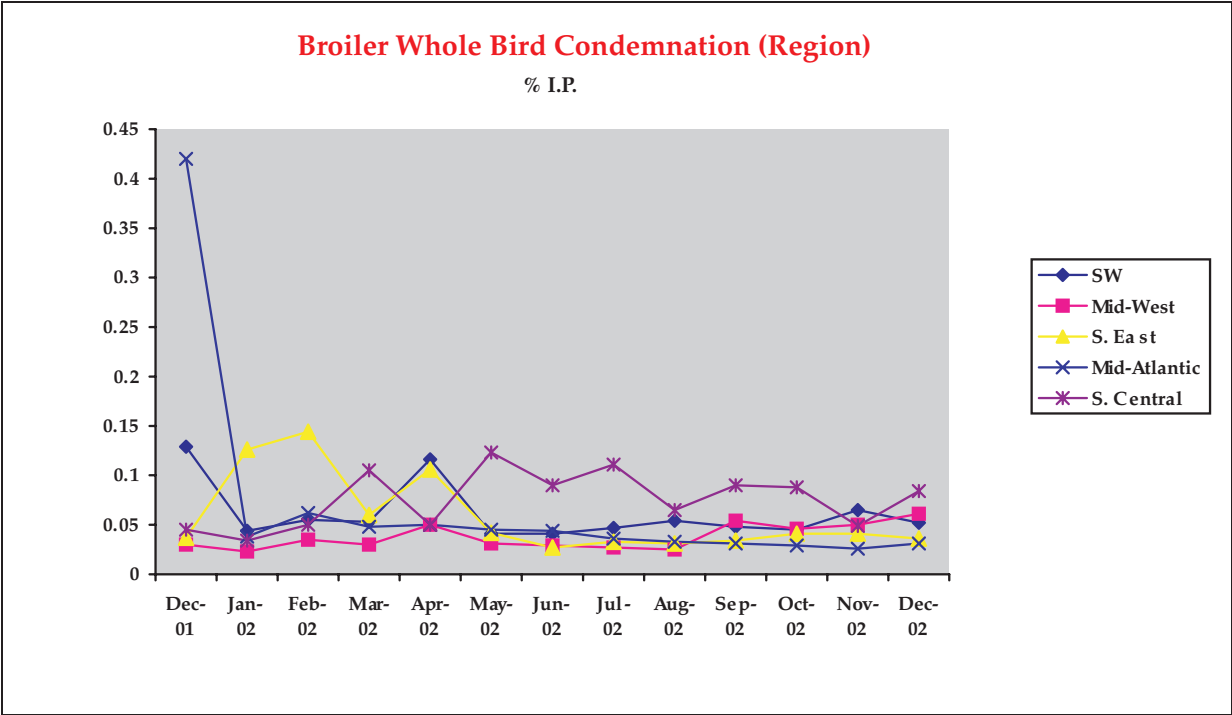
% Septox



Broiler Whole Bird Condemnation (Region)

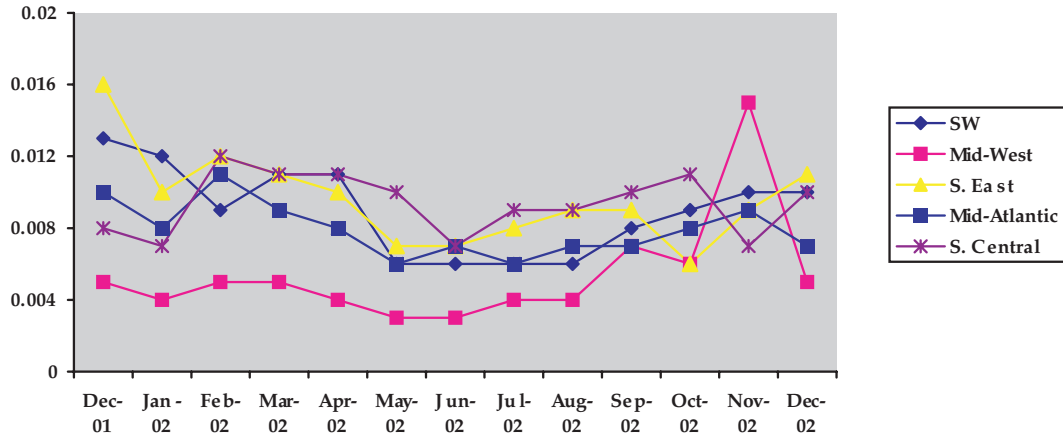
% Airsac





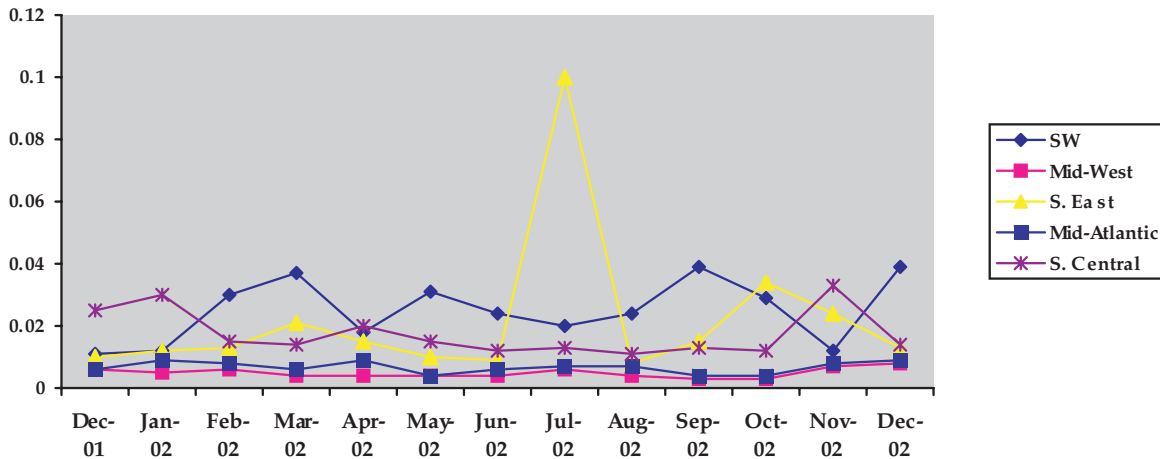
Broiler Whole Bird Condemnation (Region)

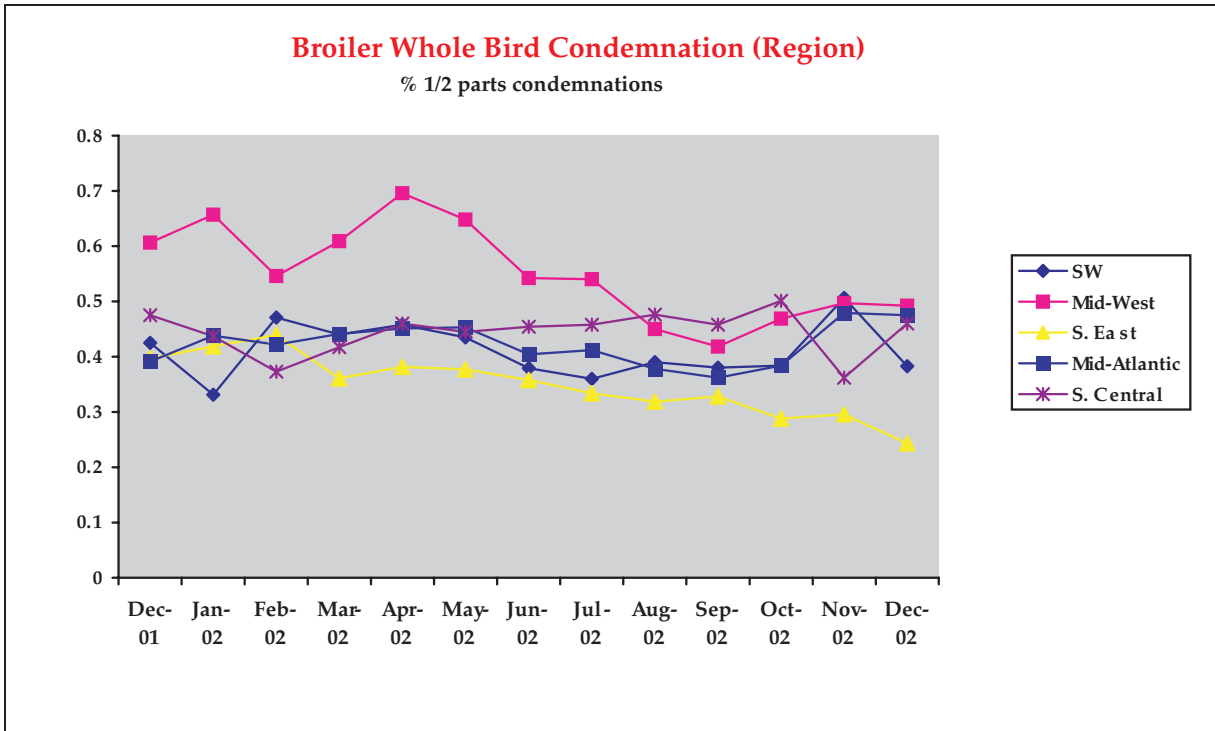
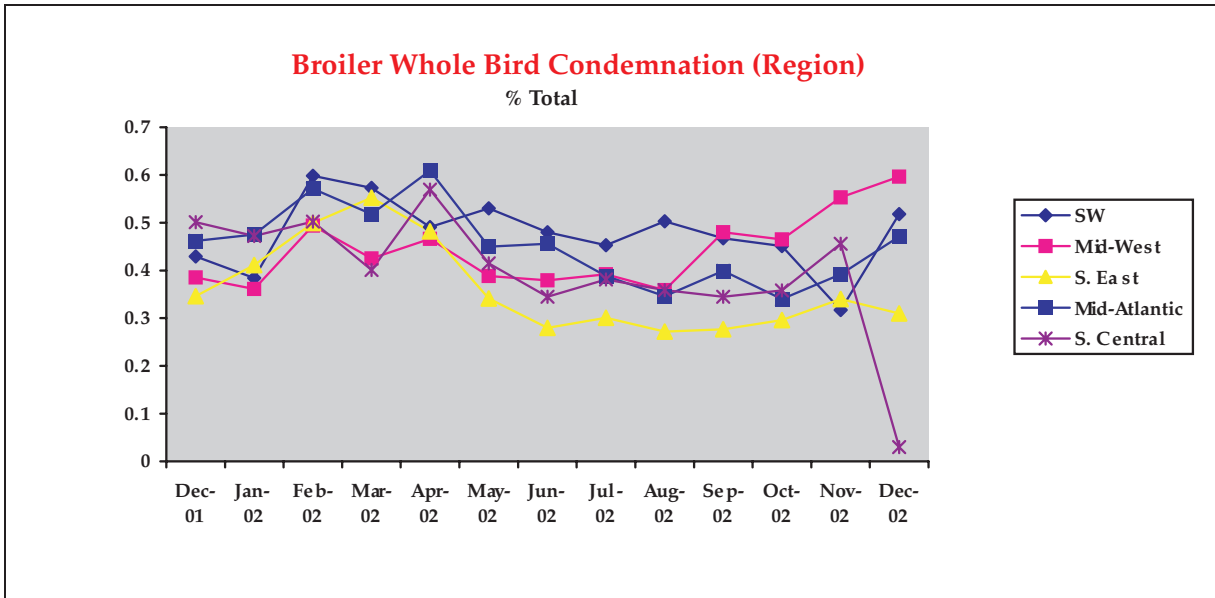
% Bruise



Broiler Whole Bird Condemnation (Region)

% Other







Dr. Glisson Receives Hill Award

Dr. John Glisson, Associate Dean for Public Service and Outreach, College of Veterinary Medicine at The University of Georgia is the recipient of the Walter Bernard Hill Award for Distinguished Achievement in Public Service and Outreach.

The award recognizes contributions made to the improvement of the quality of life in Georgia and beyond in a way that greatly exceeds the normal accomplishments of a productive faculty member.

The award was named for Chancellor Walter Barnard Hill, who led the University of Georgia from 1899 until his death in 1905.

The Hill Awards, inaugurated in 1992, recognizes distinguished achievement in public service and outreach by faculty members and service professionals.

INTERNATIONAL POULTRY SCIENTIFIC FORUM JANUARY 20 - 21 Concurrent Meetings of Southern Poultry Science Society and Southern Conference on Avian Diseases

The concurrent meetings of SPSS and SCAD will be held in Atlanta, GA, Georgia World Congress Center on January 20 and 21. The forum is sponsored by the U.S. Poultry and Egg Association and presents information on environmental management, nutrition, physiology, pathology, processing and products, and avian diseases. The meetings consist of a combination of oral presentations and poster session, and go from 8:00am to 5:00pm on Monday and 8:00am to Noon Tuesday followed by the Keynote Address at 1:30pm. This year, the Keynote Address will be presented by Dr. Kenneth W. Bafundo (Phibro Animal Health, Fairfield, New Jersey) and is entitled Human Health Risks from Use of Virginiamycin in Chickens.

Preregistration is \$25 USD and the deadline is December 20, 2002. You can register or obtain registration forms on-line. On-site registration is \$40 USD. On-line registration, forms, and more information are available at WWW.POULTRYEGG.ORG (follow the links to the Scientific Forum).

GEORGIA VETERINARY MEDICAL ASSOCIATION

2003 ANNUAL CONFERENCE

MAY 29, 2003 — JUNE 1, 2003

SANDESTIN GOLF AND BEACH RESORT, FLORIDA

RESERVATIONS (800) 320-8115

FOR YOUR INFORMATION

Bayer has launched a website that will keep you informed of the Notice of Opportunity of Hearing proceedings with FDA to withdraw Baytril from the U.S. market. The site gives the science behind Bayer's defence of Baytril as a tool in poultry production. It will be continually up-dated. The address is www.healthypoultry.com

REMINDER

All previous issues of the Poultry Informed Professional are archived on our website www.avian.uga.edu under the Online Documents and The Poultry Informed Professional links.

**Broiler Whole Bird Condemnation
(Company)**

	Average Co.	Top 25%
% Septox	0.284	0.255
% Airsac	0.102	0.046
% I.P.	0.059	0.032
% Leukosis	0.003	0.007
% Bruise	0.010	0.006
% Other	0.017	0.010
% Total	0.475	0.356
% 1/2 parts condemnations	0.393	0.232

Data for week ending 12/21/02



The University of Georgia is committed to the principle of affirmative action and shall not discriminate against otherwise qualified persons on the basis of race, color, religion, national origin, sex, age, physical or mental handicap, disability, or veteran's status in its recruitment, admissions, employment, facility and program accessibility, or services.

The Poultry Informed Professional Newsletter is published with support from Bayer Corporation

Excerpts from the latest USDA National Agricultural Statistics Service (NASS) “Broiler Hatchery,” “Chicken and Eggs” and “Turkey Hatchery” Reports

Broiler Eggs Set in 19 Selected States Down 4 Percent

According to the latest National Agricultural Statistics Service (NASS) reports, commercial hatcheries in the 19-State weekly program set 201 million eggs in incubators during the week ending December 21, 2002. This was down 4 percent from the eggs set the corresponding week a year earlier. Average hatchability for chicks hatched during the week was 83 percent. Average hatchability is calculated by dividing chicks hatched during the week by eggs set three weeks earlier.

Broiler Chicks Placed Down 4 Percent

Broiler growers in the 19-State weekly program placed 164 million chicks for meat production during the week ending December 21, 2002. Placements were down 4 percent from the comparable week in 2001. Cumulative placements from December 30, 2001 through December 21, 2002 were 8.49 billion.

November Egg Production Up 1 Percent

U.S. egg production totaled 7.25 billion during November 2002, up 1 percent from last year. Production included 6.23 billion table eggs and 1.02 billion hatching eggs, of which 962 million were broiler-type and 57.0 million were egg-type. The total number of layers during November 2002 averaged 339 million, up slightly from a year earlier. November egg production per 100 layers was 2,140 eggs, up 1 percent from the 2,128 eggs in November 2001.

All layers in the U.S. on December 1, 2002, totaled 339 million, up slightly from a year ago. The 339 million layers consisted of 282 million layers producing table or commercial type eggs, 53.8 million layers producing broiler-type hatching eggs, and 2.57 million layers producing egg-type hatching eggs. Rate of lay per day on December 1, 2002, averaged 71.3 eggs per 100 layers, up slightly from a year ago.

Laying flocks in the 30 major egg producing States produced 6.76 billion eggs during November 2002, up slightly from a year ago. The average number of layers during November, at 316 million, was down slightly from a year ago.

Egg-Type Chicks Hatched Down 3 Percent

Egg-type chicks hatched during November totaled 31.1 million, down 3 percent from November 2001. Eggs in incubators totaled 28.4 million on December 1, 2002, down 4 percent from a year ago.

Domestic placements of egg-type pullet chicks for future hatchery supply flocks by leading breeders totaled 223,000 during November 2002, down 15 percent from November 2001.

Broiler Hatch Down 2 Percent

The November 2002 hatch of broiler-type chicks, at 690 million, was down 2 percent from November of the previous year. There were 647 million eggs in incubators on December 1, 2002, up 1 percent from a year earlier.

Broiler Breeder Placement Down 4 Percent

Leading breeders placed 6.9 million broiler-type pullet chicks for future domestic hatchery supply flocks during November 2002, down 4 percent from November 2001.

Turkey Eggs in Incubators on December 1 Up 1 Percent

Turkey eggs in incubators on December 1, 2002, in the United States totaled 30.1 million, up 1 percent from December 1 a year ago. Eggs in incubators were 1 percent below the November 1 total of 30.4 million. Regional changes from the previous year were: East North Central, up slightly; West North Central, up 7 percent; North and South Atlantic, up 4 percent; South Central, down 20 percent; and West, down 9 percent.

Poults Placed During November Down 1 Percent From Last Year

The 24.0 million poults placed during November 2002 in the United States were down 1 percent from the number placed during the same month a year ago. Placements were up 1 percent from the October 2002 total of 23.8 million. Regional changes from the previous year were: East North Central, down 5 percent; West North Central, up 2 percent; North and South Atlantic, down 3 percent; South Central, down 4 percent; and West, up 10 percent.

Meetings, Seminars and Conventions

2003 January

January 22-24: International Poultry Exposition, Georgia World Congress Center, Atlanta, GA. Contact: U.S. Poultry and Egg Association, 1530 Cooledge Road, Tucker, GA 30084. Phone: 770-493-9401; Fax: 770-493-9527

2003 February

February 6-8: NTF Annual Convention, San Antonio, Texas. Contact: National Turkey Federation, 1225 New York Ave., S.W., Suite 400, Washington, D.C. 20004. Phone 202-898-0100; <http://www.eatturkey.com>

February 17-18: World Mycotoxin Forum, Grand Hotel Huis Ter Duin, Noordwijk, the Netherlands. Contact: Bastiaanse Communication, P.O. Box 179, NL-3720 AD Bilhoven, the Netherlands. Phone: 331-30-2294247; mycotoxin@bastiaanse-communication.com

February 24-27: PEPA Annual Convention, Palm Springs, Calif. Contact: Pacific Egg & Poultry Association, 1521 I St., Sacramento, Calif. 95814. Phone 916-441-0801; <http://www.pacificegg.org>

2003 March

March 4-5: Louisiana Poultry Seminar, Harrah's Shreveport, Shreveport, LA. Contact: Dr. Theresia Lavergne, 120 Ingram Hall, Louisiana State University, Baton Rouge, LA 70803. Phone: 225-578-2219

March 5-6: Nebraska Poultry Industries Annual Convention, New World Inn and Conference Center, Columbus, Nebraska. Contact: Nebraska Poultry Industries, Inc., University of Nebraska, A-103 Animal Sciences, P.O. box 830908, Lincoln, NE 68583-0908. Phone: 402-472-2051

March 5-6: U.S. Poultry Environmental Management Seminar, Raleigh Marriott Crabtree Valley Hotel, Raleigh, N.C. Contact: U.S. Poultry & Egg Association, 1530 Cooledge Road, Tucker, GA 30084-7303. Phone 770-493-9401; <http://www.poultryegg.org>

March 6-8: AFIA*AGRO Expo Guadalajara, Jalisco, Mexico. Contact: American Feed Industry Association, 1501 Wilson Blvd., Arlington, VA 22209. Phone: 703-524-0810

March 5-7: VIV Asia, Queen Sirikit National Convention Center, Bangkok, Thailand. Contact: Jaarbeurs Exhibitions and Media. P.O. Box 8500, 3503 RM Utrecht, The Netherlands. Phone: +31 30 295 5662; Fax: +31 30 295 5709 or email: viv.asia@jaarbeursutrecht.nl

March 8: ACPV Sponsored Workshop, Molecular Biology Made Easy, Contact: H.L. Shivaprasad, 2789 S. Orange Ave., Fresno, CA 93725.

March 9-11: 52nd Western Poultry Disease Conference, Capitol Plaza Holiday Inn, Sacramento, CA. Contact: R.P. Chin, 2789 S. Orange Ave., Fresno, CA 93725

March 18-20: MPF Conference, RiverCentre, St. Paul, Minn. Contact: Midwest Poultry Federation, 108 Marty Drive, Buffalo, Minn. 55313. Phone: 763-682-2171; <http://www.midwestpoultry.com>

March 19-20: U.S. Poultry Feed Mill Management, DoubleTree Hotel, Nashville, TN. Contact: U.S. Poultry & Egg Association, 1530 Cooledge Road, Tucker, GA 30084-7303. Phone 770-493-9401; <http://www.poultryegg.org>

2003 April

April 4-5: Florida Poultry Days, Orlando, FL. Contact: Florida Poultry Association, 4508 Oak Fair Blvd., No. 290, Tampa, FL 33601

April 20-23: Middle East Poultry Show, Dubai World Trade Center Exhibition Complex, United Arab Emirates. Contact: Mediac Communication and Promotion, P.O. Box 5196, Dubai, UAE. Phone: +971 4 2692004; Fax: +971 4 2691298

April 28-30: U.S. Poultry Human Resources Management, Park Vista Hotel, Gatlinburg, TN. Contact: U.S. Poultry & Egg Association, 1530 Cooledge Road, Tucker, GA 30084-7303. Phone 770-493-9401; <http://www.poultryegg.org>

2003 May

May 1-4: GPF Annual Meeting, Brasstown Valley Resort, Young Harris, GA. Contact: Georgia Poultry Federation, P.O. Box 763, Gainesville, GA 30503. Phone: 770-532-0473; claudette@gapf.org

May 8-9: U.S. Poultry National Breeders Roundtable, Airport Marriott Hotel, St. Louis, MO. Contact: U.S. Poultry & Egg Association, 1530 Cooledge Road, Tucker, GA 30084-7303. Phone: 770-493-9401; <http://www.poultryegg.org>

May 14-15: U.S. Poultry Processor Workshop, DoubleTree Hotel, Nashville, TN. Contact: U.S. Poultry & Egg Association, 1530 Cooledge Road, Tucker, GA 30084-7303. Phone: 770-493-9401; <http://www.poultryegg.org>

May 17: GPF Night of Knights, Cobb Galleria Centre, Atlanta, GA. Contact: Georgia Poultry Federation, P.O. Box 763, Gainesville, GA 30503. Phone: 770-532-0473; claudette@gapf.org

May 29-31: Chicken Cooking Contest, Baltimore Convention Center, Baltimore, MD. Contact: National Chicken Council, 1015 15th St., N.W., Suite 930, Washington, DC 20005-2625. Phone: 202-296-2622

May 29-June 1: Georgia Veterinary Medical Association 2003 Annual Conference, Sandestin Golf and Beach Resort, Florida. Reservations (800) 320-8115

2003 June

June 5-7: VIV Poultry Yutav, World Trade Center Yesulsky, Istanbul, Turkey. Contact: Jaabeurs Exhibitions and Media, P.O. Box 8800, 3503 RM Utrecht, The Netherlands. Phone: +31 30 295 2772; Fax: +31 30 295 2809

June 14-16: Agrena 2003, 5th International Exhibition of Poultry & Livestock Production, Cairo International Conference Centre, Egypt. Contact: Crose Fairs Organisers, 87 El Alameen Street, Sahfeen, Mohandeseen, Cairo, Egypt. Phone/Fax: +20 2 30 38 994; Email: crose@access.com.eg; Website: www.agrena.com

June 16-18: U.S. Poultry Financial Management, Sawgrass Marriott Hotel, Ponte Vedra Beach, FL. Contact: U.S. Poultry & Egg Association, 1530 Cooledge Road, Tucker, GA 30084-7303. Phone 770-493-9401; <http://www.poultryegg.org>

June 25-27: Georgia Egg Association's 42nd Annual Meeting, King & Prince Hotel, St. Simons Island, GA. Contact: Robert Howell, Georgia Egg Commission, 16 Forest Park, GA 30297. Phone: 404-363-7661; Fax: 404-363-7664 or email: goodeggs@bellsouth.net

2003 July

July 15-16: U.S. Poultry Hatcher-Breeder Clinic, Marriott Marquis, Atlanta, GA. Contact: U.S. Poultry & Egg Association, 1530 Cooledge Road, Tucker, GA 30084-7303. Phone 770-493-9401; <http://www.poultryegg.org>

July 19-23: XIII Congress of the World Veterinary Poultry Association and the American Association of Avian Pathologists, Denver, CO, USA.

Contact: Details are posted on the web site of the American Association of Avian Pathologists. Website: <http://www.avian.uga.edu/~wvpa/>

July 28-30: U.S. Poultry Information Systems, Sawgrass Marriott Hotel, Ponte Vedra Beach, FL. Contact: U.S. Poultry & Egg Association, 1530 Cooledge Road, Tucker, GA 30084-7303. Phone 770-493-9401; <http://www.poultryegg.org>

Meetings, Seminars and Conventions

2003 August

Aug. 10-14: *14th European Symposium on Poultry Nutrition*, Lillehammer, Norway. Contact: Mrs. M.F. Bagley, Centre for Poultry Science, P.O. Box 4377, Nydalen, N-0402 Oslo, Norway. Phone: +47 22 79 87 73; Fax: +47 22 79 87 71; Email: wpsa@fjorfe.org; Website: www.wpsa.no

Aug. 21-23: *Livestock Asia 2003*, The Mines, Kuala Lumpur, Malaysia. Contact: Mr. Richard Yew, AMB Exhibitions Snd Bhd, Suite 1701, 17th Floor Plaza Permata, 6 Jalan Kampar, off Jalan Tun Razak, 50400 Kuala Lumpur, Malaysia. Phone: +603 4045 4993; Fax: +603 4045 4989; Email: info@ambexpo.com; Website: www.alliedmedia.org

Aug. 25-Feb. 27 2004: *International Course on Poultry Husbandry*, IPD Plant.Dier, Barneveld, the Netherlands. Deadline for Applications: April 1, 2003. Contact: IPC Plant.Dier Barneveld, Department of International Studies and Programmes, P.O. Box 64, 3770 AB Barneveld, the Netherlands. Phone: +31 342 406500; Fax: +31 342 406501; Email: barneveld@ipc-training.nl

2003 September

Sept 17-18: *U.S. Poultry Production & Health*, The Peabody Hotel, Memphis, TN. Contact: U.S. Poultry & Egg Association, 1530 Cooledge Road, Tucker, GA 30084-7303. Phone 770-493-9401; <http://www.poultryegg.org>

Sept 23-26: *XVI European Symposium on the Quality of Poultry Meat & European Symposium on the Quality of Eggs and Egg Products*, Saint-Brieve, Brittany, France. Contact: ISPAIA, Zoopole Development, BP7-22400 Ploufragen, France. Phone: +47 22 79 87 72, Fax: +47 22 79 87 71. Email: wpsa2003@zoopole2550.fr

2003 October

Oct 9-10: *U.S. Poultry Protein & Fat*, The Peabody Hotel, Memphis, TN. Contact: U.S. Poultry & Egg Association, 1530 Cooledge Road, Tucker, GA 30084-7303. Phone 770-493-9401; <http://www.poultryegg.org>

Oct. 11-15: *Anuga Food Show*, KslnMesse, Cologne, Germany. Contact: KslnMesse, GmbH, Messeplatz 1, D-50679 Klsn, Germany. Phone: +49 821 33 05; Fax: +49 821 34 10. Email: m.schlvetter@koelnmesse.de

Oct. 23-24: *U.S. Poultry Women in Management*, Park Vista Hotel, Gatlinburg, TN. Contact: U.S. Poultry & Egg Association, 1530 Cooledge Road, Tucker, GA 30084-7303. Phone 770-493-9401; <http://www.poultryegg.org>

Oct. 27: *Mycoplasma 2003*, NH Utrecht Hotel, Utrecht, The Netherlands. Contact: Positive Action Conferences, P.O. Box 4, Driffield, East Yorkshire, YO25 9DJ, England. Phone: +44 1377 256316; Fax: +44 1377 253640.

Email: conf@positiveaction.co.uk;
Website: www.positiveaction.co.uk

2003 November

Nov. 12: *U.S. Poultry Grain Forecast and Economic Outlook*, Atlanta Airport Hilton Hotel, Atlanta, GA. Contact: U.S. Poultry & Egg Association, 1530 Cooledge Road, Tucker, GA 30084-7303. Phone 770-493-9401; <http://www.poultryegg.org>

POSITION AVAILABLE

The Department of Avian Medicine, College of Veterinary Medicine, The University of Georgia is seeking a veterinarian to fill a position in clinical poultry medicine. Requirements include the DVM or equivalent and Masters or Ph.D degree or board certification (or eligibility for examination) by the American College of Poultry Veterinarians. Responsibilities include clinical services to the poultry industry, major participation in instruction in the Master of Avian Medicine degree program, and/or clinical research. Salary and rank are dependent on qualifications and training.

Interested persons should submit their curriculum vitae and names of 3 persons who may be contacted as references. Deadline for receipt of application is March 15, 2003, The search may be reopened/extended.

Direct inquiries and submit applications to: Dr. C. L. Hofacre, Department of Avian Medicine, College of Veterinary Medicine, The University of Georgia, Athens, GA 30602-4875. Phone (706) 542-1904. Fax: (706) 542-5630. Email: chofacre@uga.edu.

The University of Georgia is an equal opportunity/affirmative action institution.